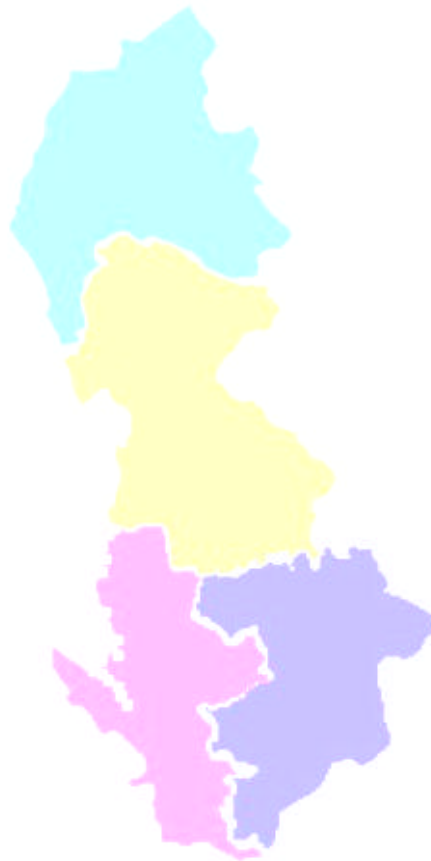




INFORMATION SUMMARY
BY CANCER NETWORK
MARCH 2007

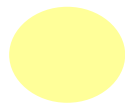
Produced by
North West Cervical Screening
Quality Assurance Reference Centre
Liverpool Women's Hospital
Crown Street Liverpool L8 7SS
www.nwcsqarc.org.uk



CANCER NETWORK KEY



Northern Cancer Network



Lancashire & South Cumbria Cancer Network



Greater Manchester & Cheshire Cancer Network



Merseyside & Cheshire Cancer Network

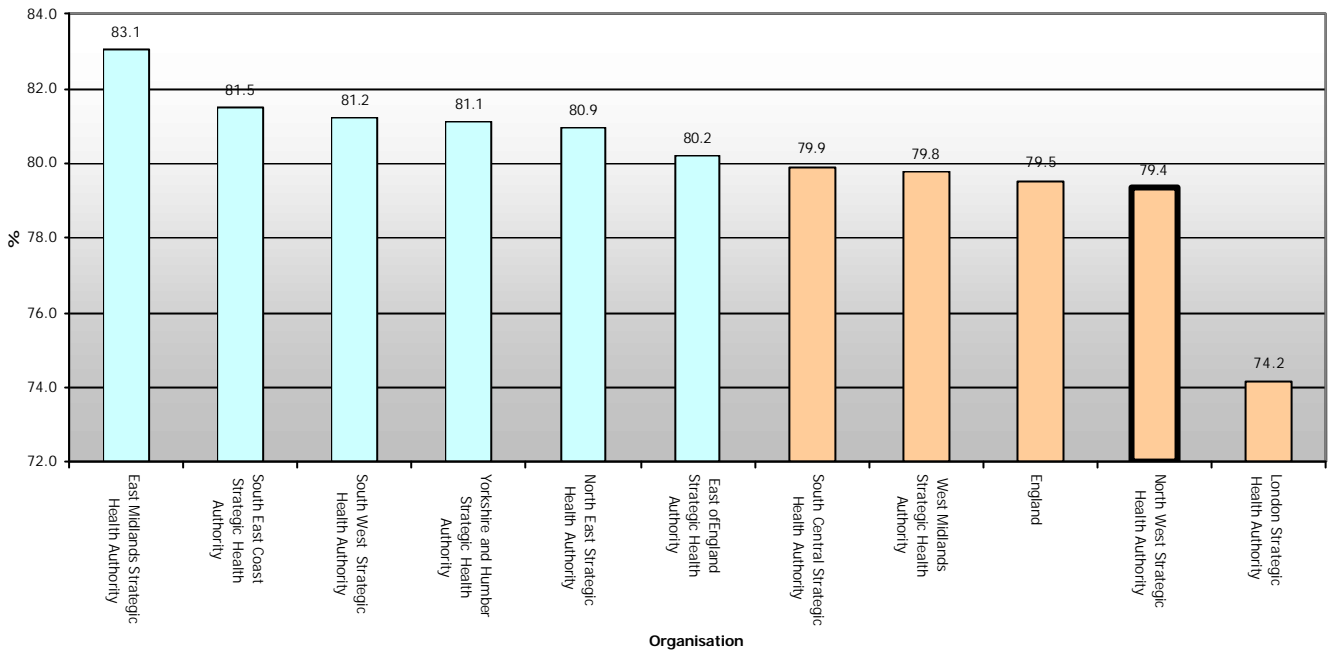
Cervical Screening Programme: coverage of the Target Age Group (25-64) by Primary Care Organisation, 2002-03 to 2005-06.

KC53 Data for Target Screening Age 25-64 (ranked in order of coverage for 2005-2006)	Coverage 2005-2006	Coverage 2004-2005	Coverage 2003-2004	Coverage 2002-2003
Eastern Cheshire	84.2	84.9	85.3	85.7
Trafford South	83.2	83.1	82.8	83.3
Central Cheshire	83.2	83.7	84.3	84.9
Bury	82.4	82.9	82.5	82.8
Stockport	81.5	81.8	82.1	82.7
Tameside and Glossop	81.1	82.1	82.4	83.1
Bolton	81.1	81.2	82.3	84.0
Ashton, Leigh and Wigan	81.1	80.6	80.9	81.6
Heywood and Middleton	80.9	81.3	80.7	80.8
Oldham	80.7	81.0	82.3	83.3
Rochdale	79.5	81.0	81.3	81.7
Salford	78.3	78.8	78.7	79.3
Trafford North	77.6	79.2	79.5	80.6
South Manchester	76.5	76.4	77.2	77.6
North Manchester	74.5	75.1	76.3	77.1
Central Manchester	72.5	71.3	71.0	71.7
Eden Valley	85.8	85.5	86.0	86.5
Wyre	82.0	82.3	82.9	83.7
Chorley and South Ribble	82.0	82.9	84.1	84.8
Fylde	80.4	81.9	82.7	83.4
Burnley, Pendle and Rossendale	80.4	81.9	82.8	83.3
West Lancashire	80.0	81.5	81.7	83.0
Hyndburn and Ribble Valley	79.9	81.9	83.0	84.6
Morecambe Bay	78.7	78.7	79.8	81.3
Blackburn With Darwen	77.9	80.2	80.7	82.0
Preston	77.3	78.1	80.3	81.4
Blackpool	75.3	76.7	78.4	79.4
Warrington	82.8	82.9	83.0	83.7
Cheshire West	82.2	83.3	84.0	84.8
Bebington and West Wirral	82.2	83.3	83.0	83.4
Ellesmere Port and Neston	81.1	81.7	82.6	83.7
St Helens	80.7	80.4	80.6	80.7
Halton	77.6	77.2	78.2	78.9
Birkenhead and Wallasey	76.4	78.4	78.2	79.5
Southport and Formby	76.3	77.2	77.9	78.8
Knowsley	74.8	75.3	75.6	75.9
North Liverpool	73.9	75.4	76.1	76.4
South Sefton	73.3	75.1	76.4	77.8
South Liverpool	73.3	74.6	75.8	75.7
Central Liverpool	72.1	73.5	73.9	73.2
Carlisle and District	82.7	83.3	84.2	84.5
West Cumbria	82.7	82.1	82.6	83.0

Source Cervical Screening Programme, England: 2005-06 Bulletin: 2006/24/HSCIC Table 13 © 2006, The Information Centre

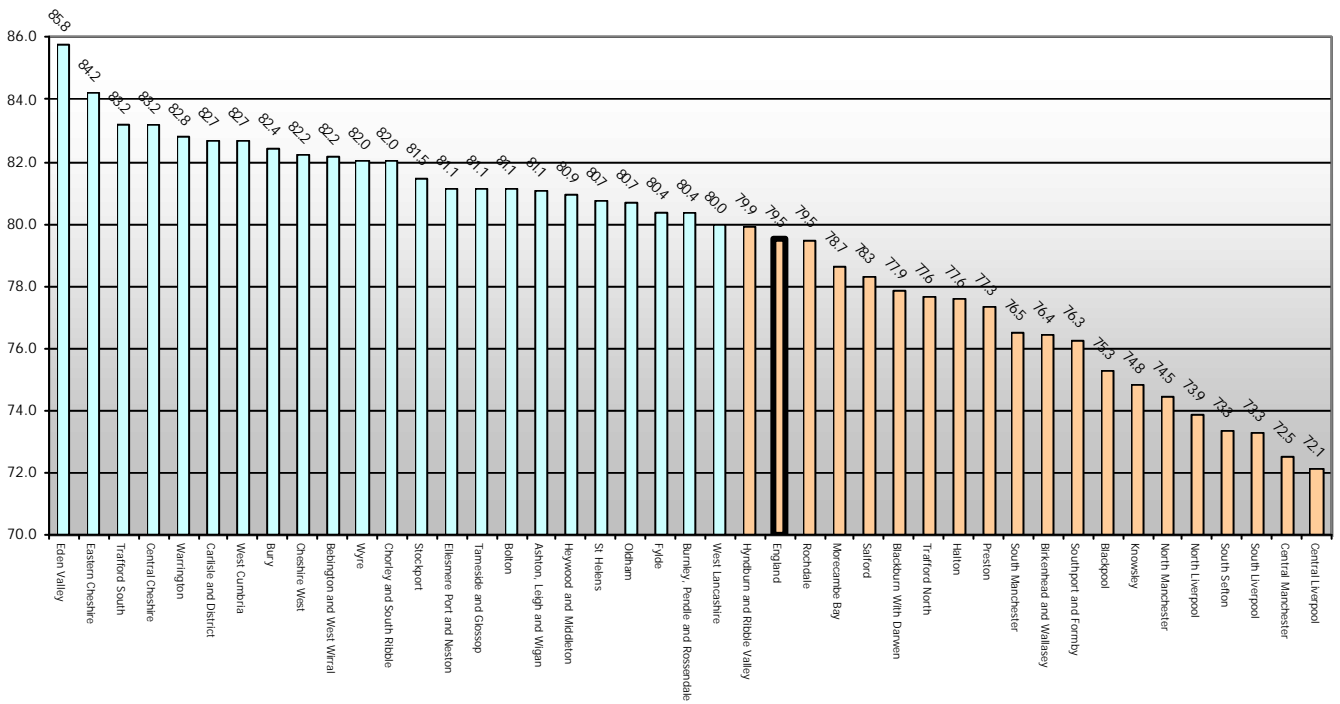
Cervical screening programme: coverage (less than 5 years since last adequate test) of the Target Age Group (25-64) by SHA
2005-06

source: Stats Bulletin 05-06 NHS Information Centre

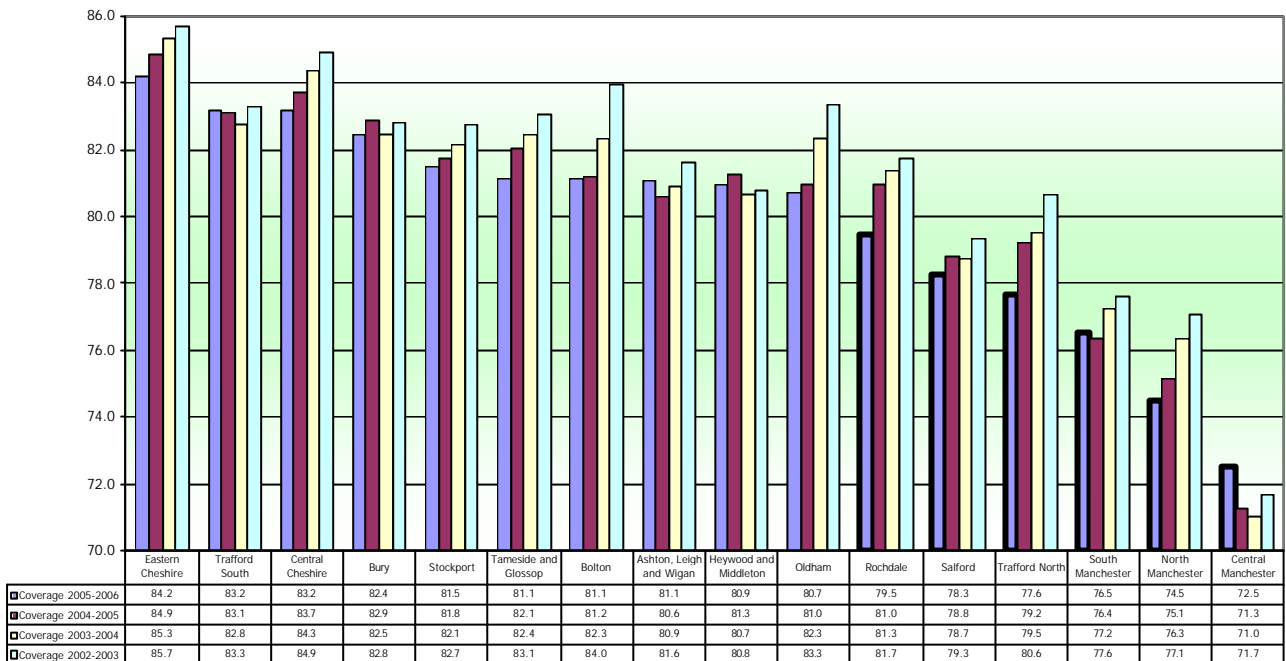


Cervical screening programme: coverage (less than 5 years since last adequate test) of the Target Age Group (25-64) by PCT
2005-06

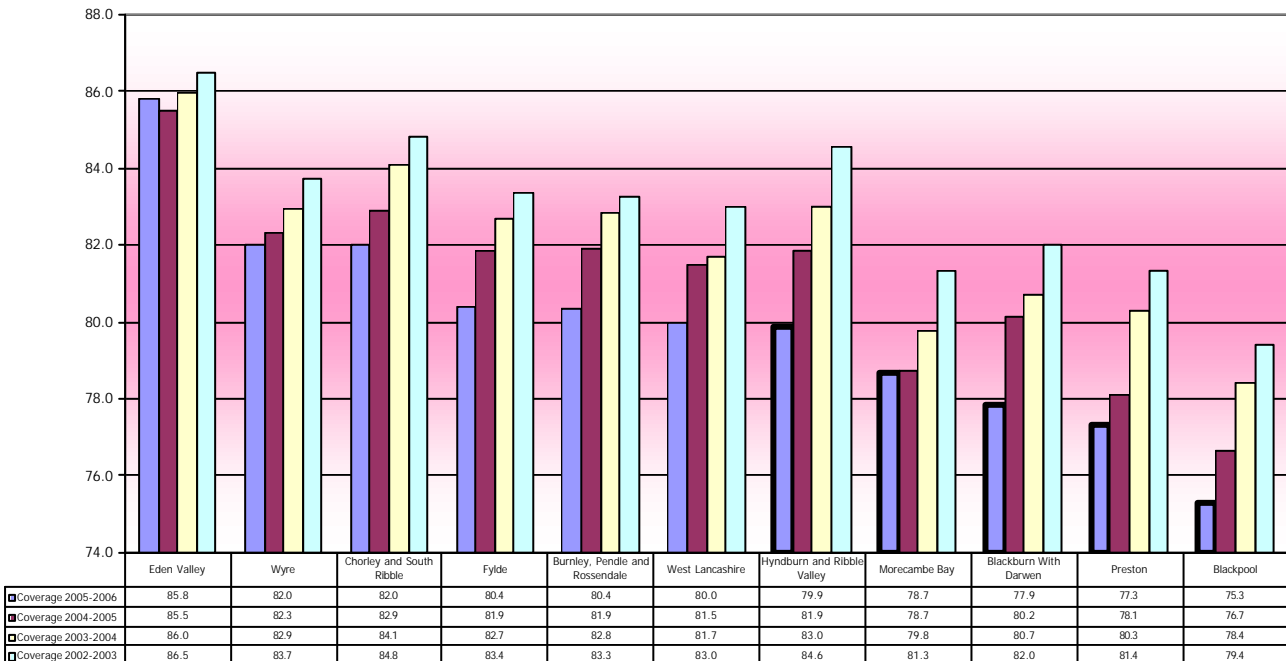
source: Stats Bulletin 05-06 NHS Information Centre



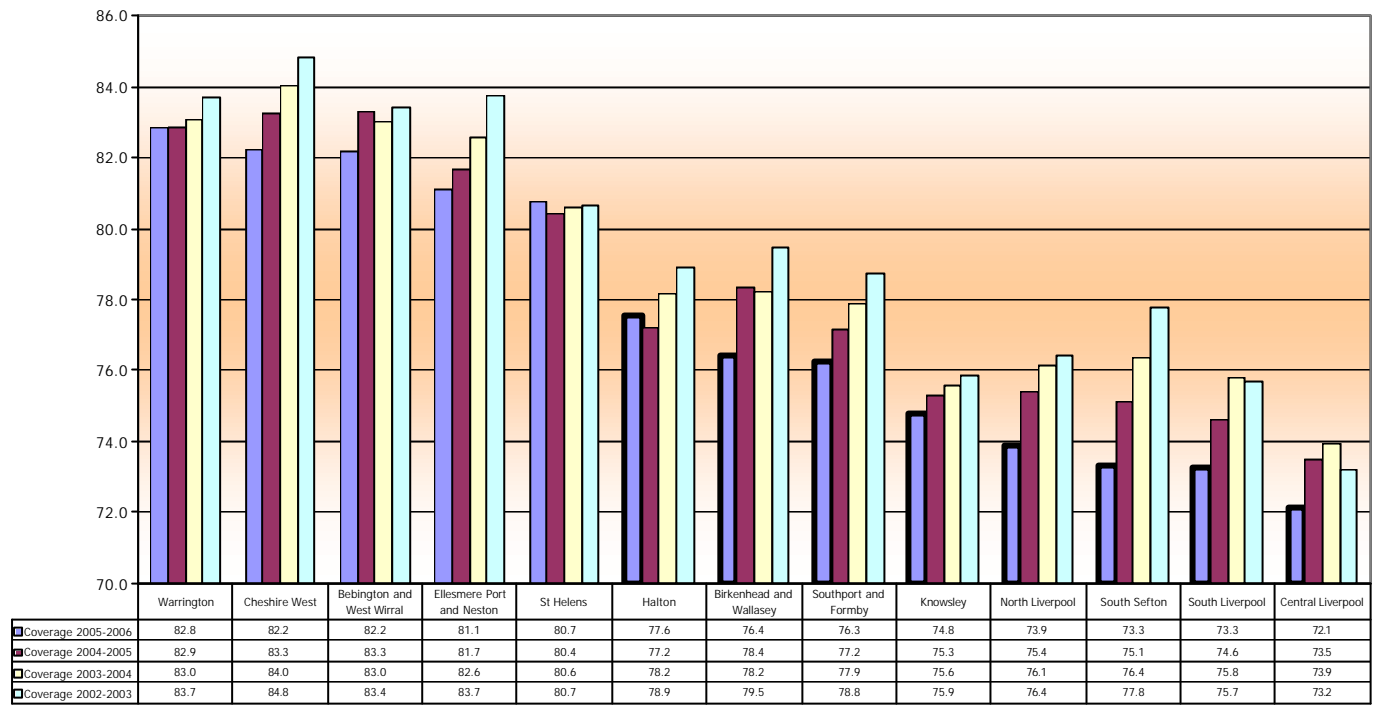
% Coverage (less than 5 years since adequate test) for the period 2002-2006 for target group 25-64 for Greater Manchester & Cheshire Cancer Network. Target 80%.



% Coverage (less than 5 years since adequate test) for the period 2002-2006 for target group 25-64 for Lancashire & South Cumbria Cancer Network. Target 80%.



% Coverage (less than 5 years since adequate test) for the period 2002-2006 for target group 25-64 for Merseyside & Cheshire Cancer Network. Target 80%.



Measuring laboratory performance in the North West

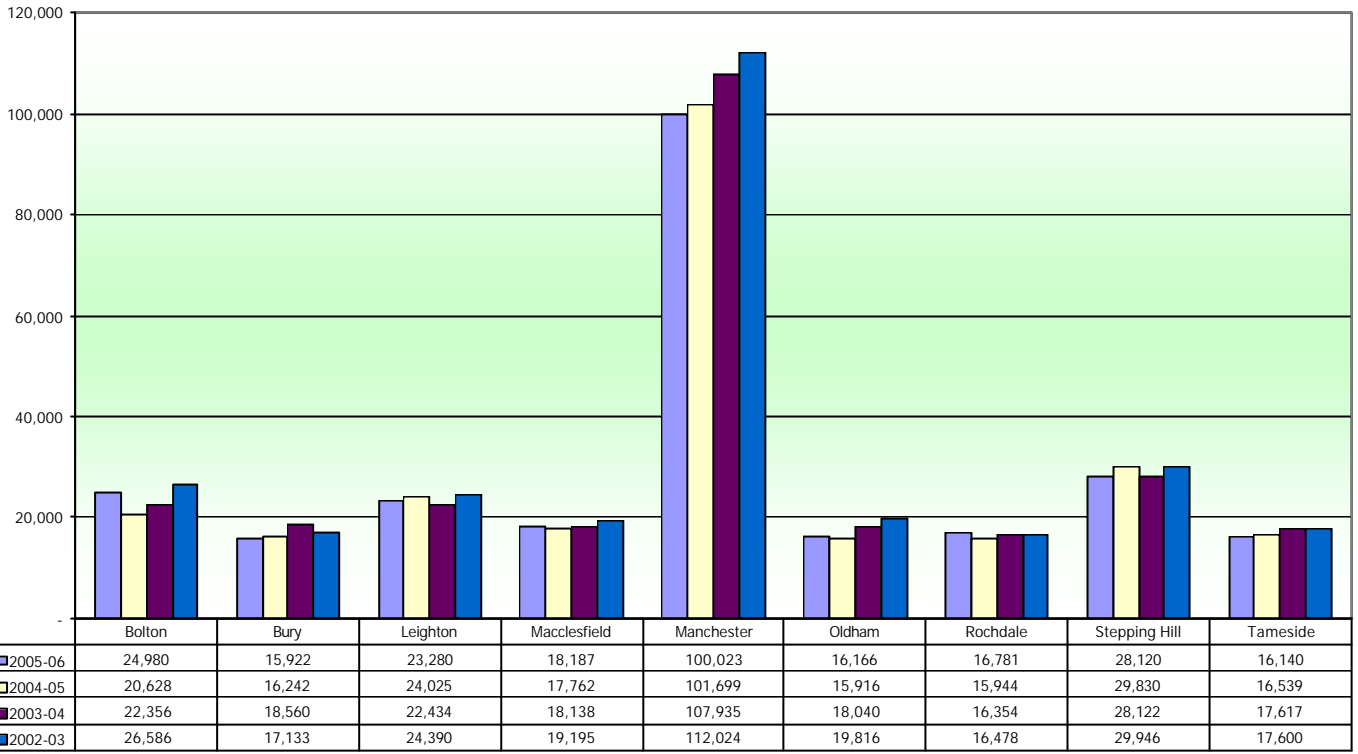
2002-03 to 2005-06

Workload

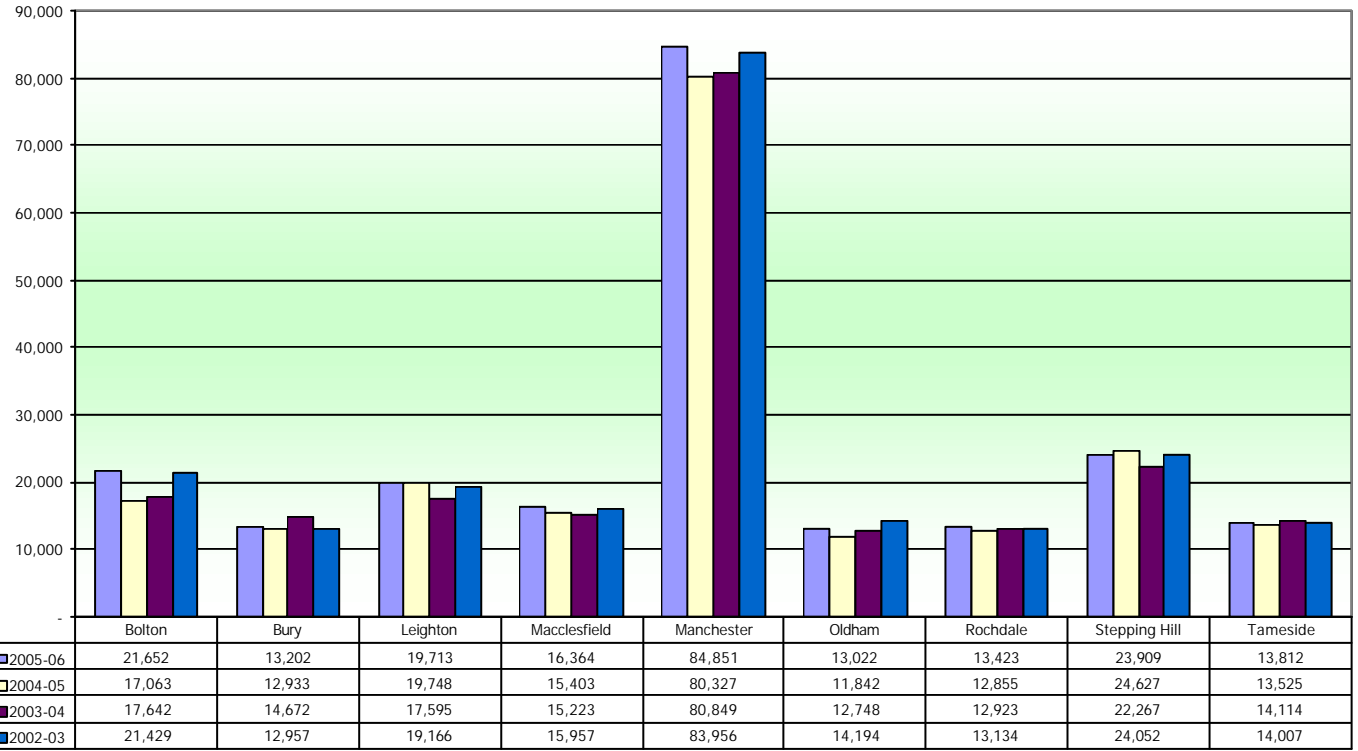
Laboratory by Cancer Network		Workload - Smears examined							
		2005-06		2004-05		2003-04		2002-03	
		All sources, all ages	GP & NHS CC (25-64)	All sources, all ages	GP & NHS CC (25-64)	All sources, all ages	GP & NHS CC (25-64)	All sources, all ages	GP & NHS CC (25-64)
Lancs & S Cumbria	Blackburn	19,666	17,103	20,419	17,318	21,366	17,652	22,963	18,633
	Blackpool	21,598	18,193	22,351	18,203	23,327	18,370	24,425	19,213
	Burnley	18,139	15,549	18,747	15,447	20,177	16,119	20,519	16,258
	Chorley	25,535	21,872	25,926	20,609	28,321	21,436	30,497	23,329
	Lancaster	22,012	19,231	22,079	18,141	22,387	17,310	21,106	15,983
Manchester & Cheshire	Bolton	24,980	21,652	20,628	17,063	22,356	17,642	26,586	21,429
	Bury	15,922	13,202	16,242	12,933	18,560	14,672	17,133	12,957
	Leighton	23,280	19,713	24,025	19,748	22,434	17,595	24,390	19,166
	Macclesfield	18,187	16,364	17,762	15,403	18,138	15,223	19,195	15,957
	Manchester	100,023	84,851	101,699	80,327	107,935	80,849	112,024	83,956
	Oldham	16,166	13,022	15,916	11,842	18,040	12,748	19,816	14,194
	Rochdale	16,781	13,423	15,944	12,855	16,354	12,923	16,478	13,134
	Stepping Hill	28,120	23,909	29,830	24,627	28,122	22,267	29,946	24,052
	Tameside	16,140	13,812	16,539	13,525	17,617	14,114	17,600	14,007
Merseyside & Cheshire	Aintree	19,450	17,142	21,745	18,729	22,522	19,038	23,485	19,659
	Arrowe Park	25,514	21,969	28,482	23,635	27,561	22,230	27,616	22,076
	Chester	22,687	19,802	23,962	20,296	23,508	19,076	24,694	20,105
	Liverpool	26,706	19,849	29,443	20,478	33,695	22,846	32,346	21,309
	Southport	15,538	13,452	17,720	14,568	17,718	14,566	17,016	13,953
	Warrington	31,143	26,597	26,215	21,371	26,799	21,132	28,881	23,245
	Whiston	22,251	17,912	22,827	17,895	23,361	17,549	22,671	16,166
Northern	Carlisle	25,238	22,237	25,800	22,378	26,634	22,647	26,961	22,757

Source Cervical Screening Programme, England: 2005-06 Bulletin: 2006/24/HSCIC Table 19 © 2006, The Information Centre

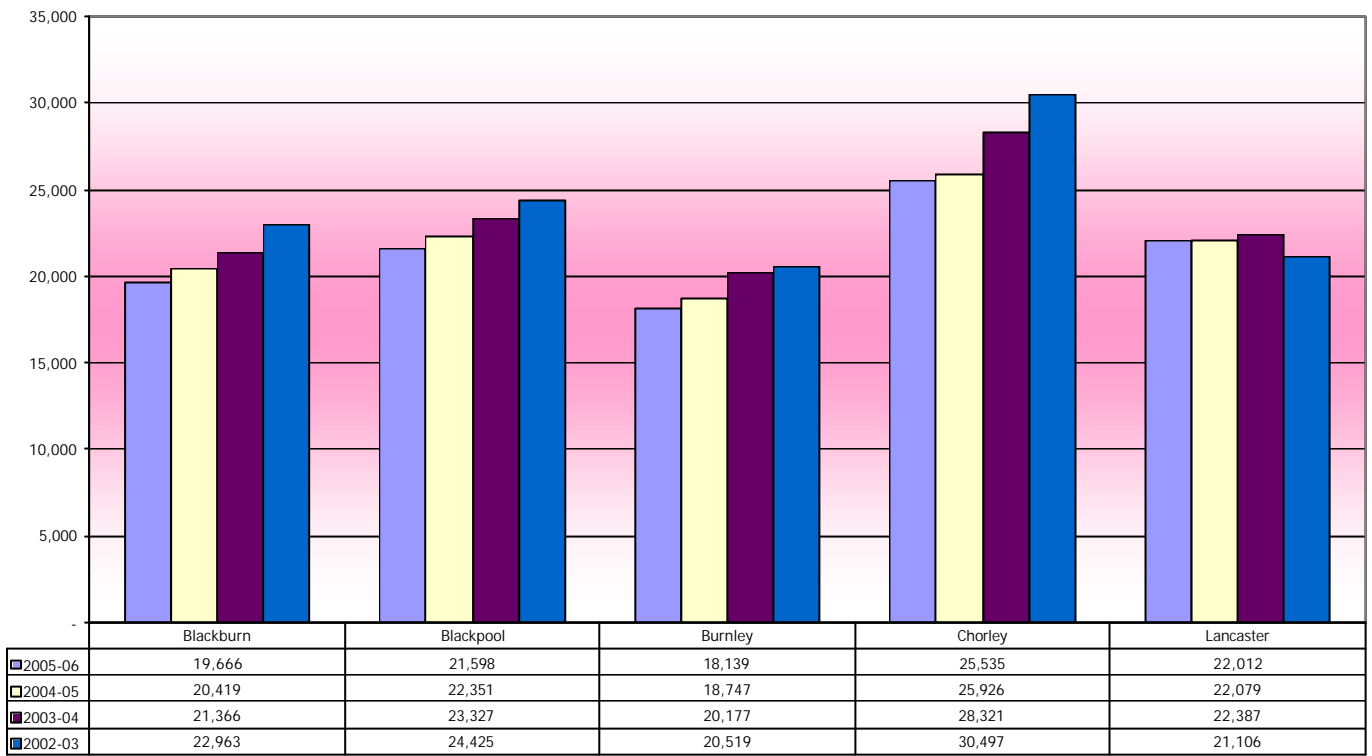
Workload (all sources, all ages) 2002-2006 for Greater Manchester & Cheshire Cancer Network.



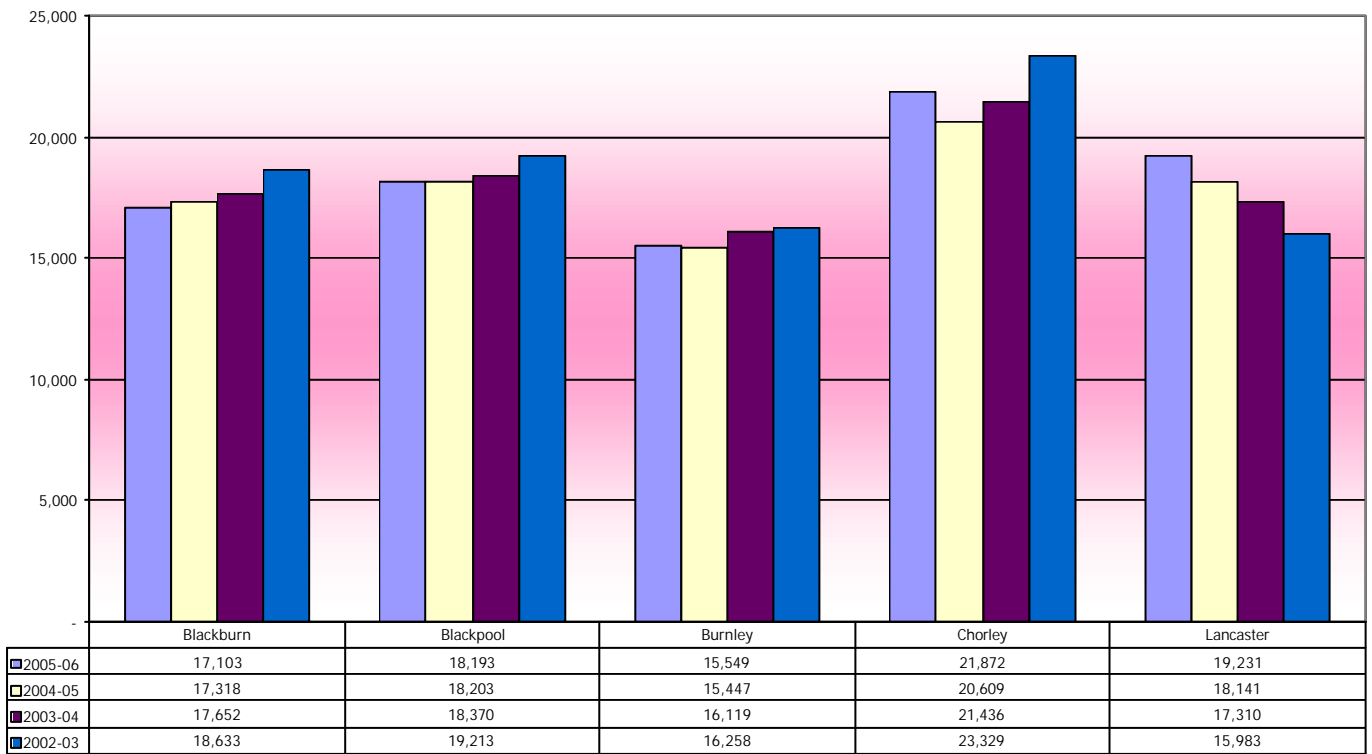
Workload (GP & NHS CC) 2002-2006 for the Greater Manchester & Cheshire Cancer Network.



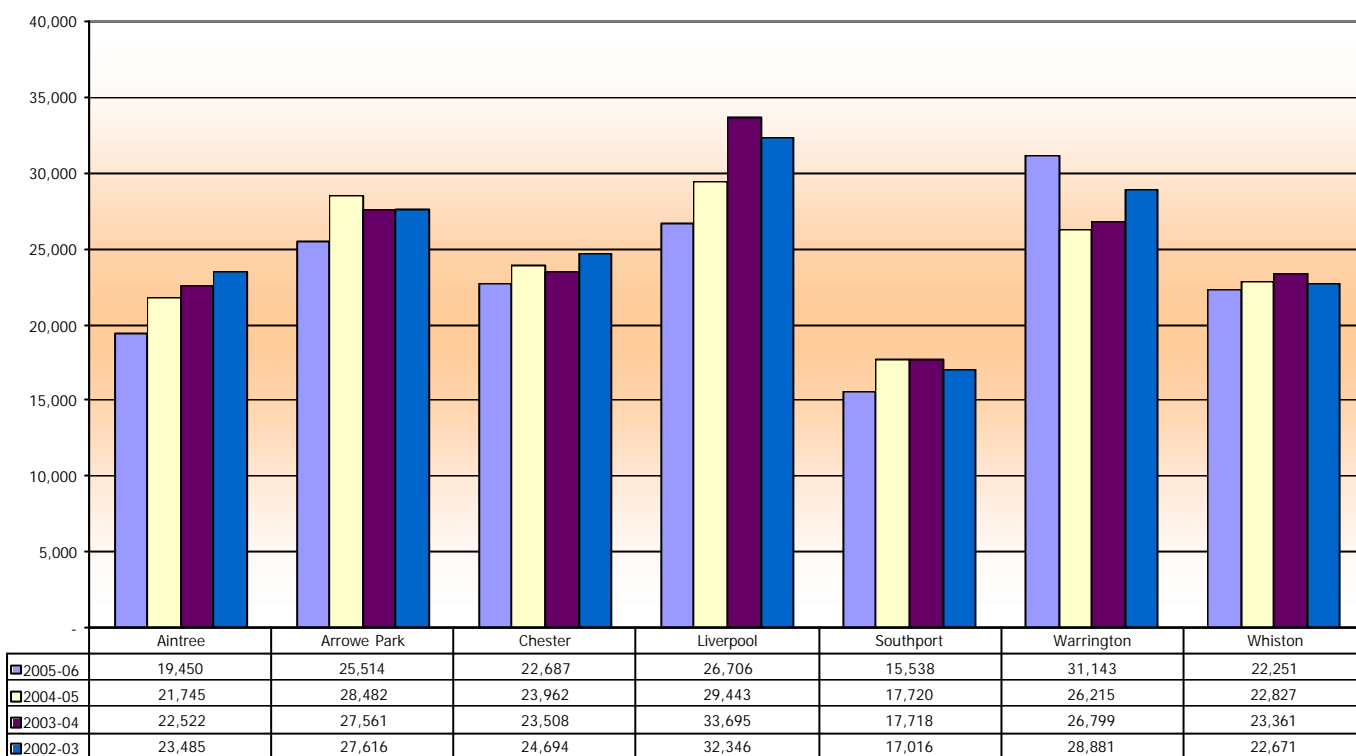
Workload (all sources, all ages) 2002-2006 for Lancashire & South Cumbria Cancer Network.



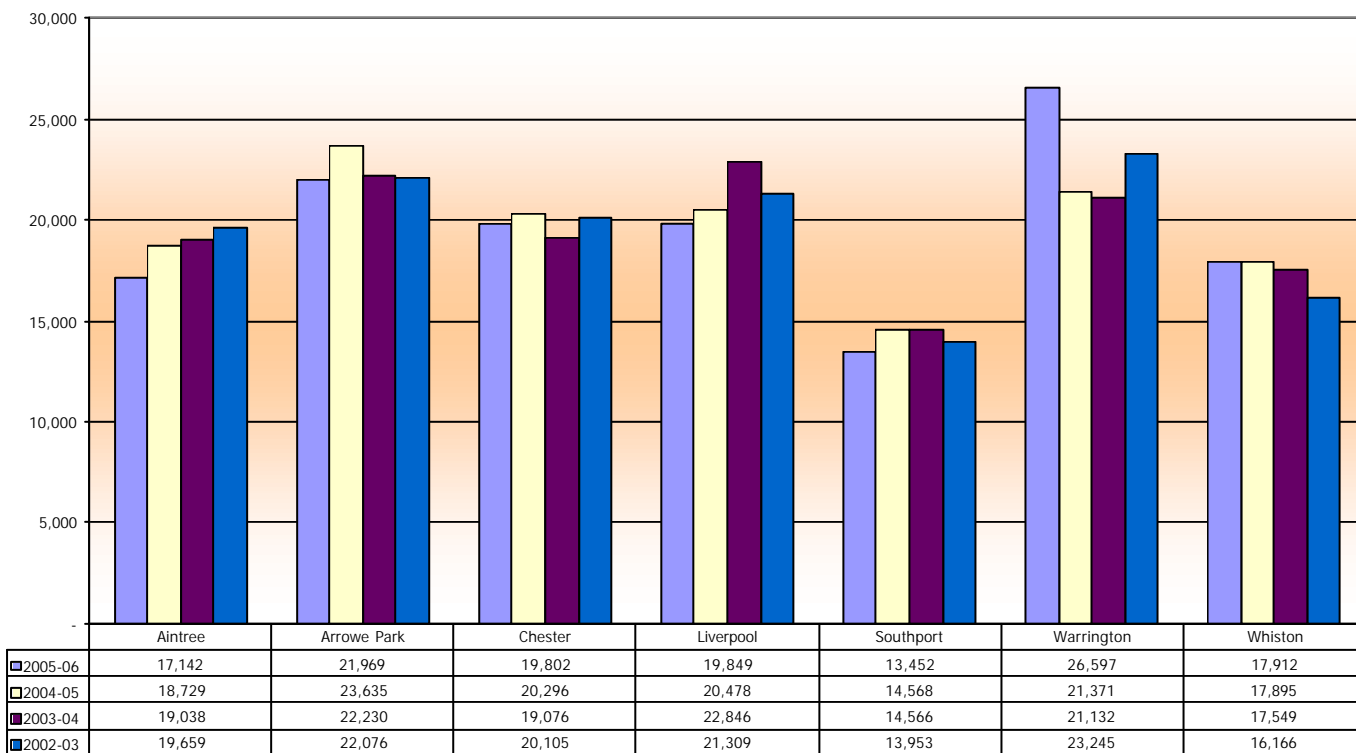
Workload (GP & NHS CC) 2002-2006 for the Lancashire & South Cumbria Cancer Network.



Workload (all sources, all ages) 2002-2006 for Merseyside & Cheshire Cancer Network.



Workload (GP & NHS CC) 2002-2006 for the Merseyside & Cheshire Cancer Network.



Measuring laboratory performance in the North West

2002-03 to 2005-06

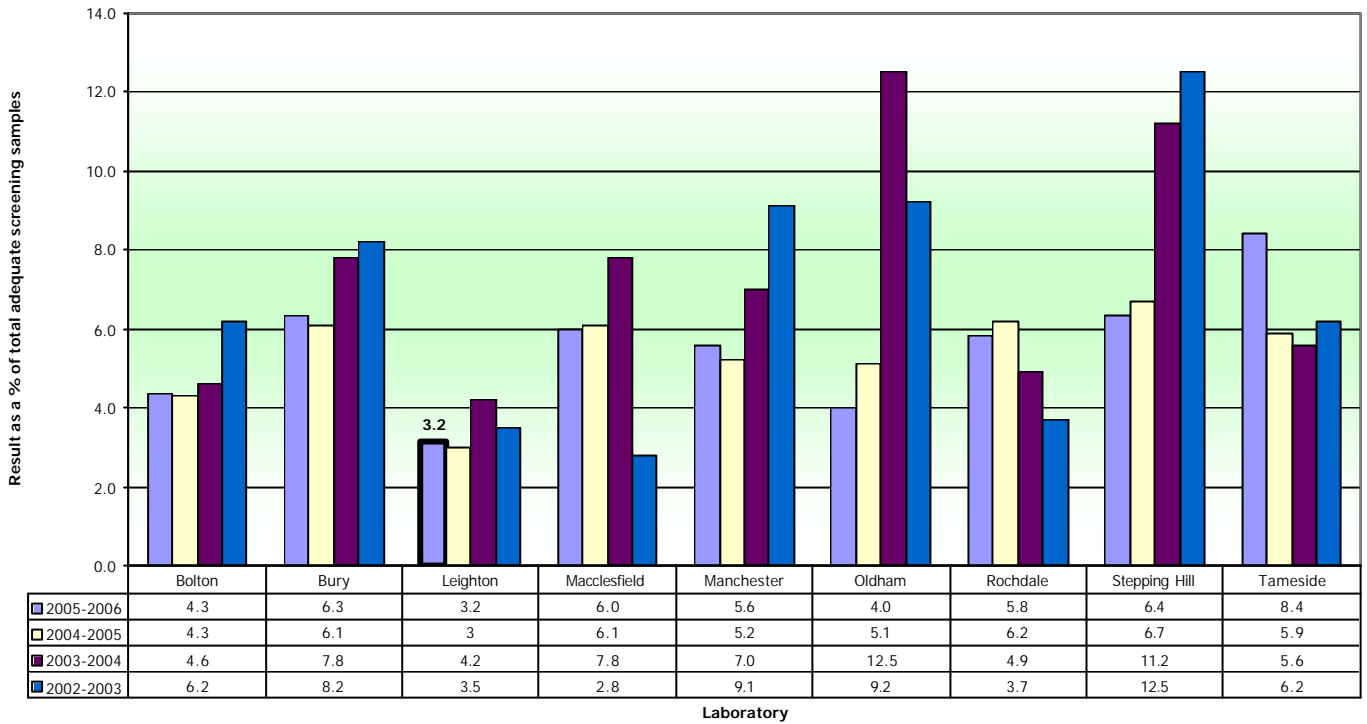
Reporting Profile

Reporting Profile Quality Standards Low Grade 3.4% - 7.0% High Grade 0.7% - 1.4% *									
Laboratory by Cancer Network		2005-2006		2004-2005		2003-2004		2002-2003	
		Low Grade	High Grade	Low Grade	High Grade	Low Grade	High Grade	Low Grade	High Grade
		Borderline/ Mild	Moderate/Severe & above	Borderline/ Mild	Moderate/Severe & above	Borderline/ Mild	Moderate/Severe & above	Borderline/ Mild	Moderate/Severe & above
Lancs & Cumbria	Blackburn	4.8	0.8	4.9	0.7	4.7	1.0	5.2	0.9
	Blackpool	4.6	1.1	4.2	1.1	5.6	1.5	5.7	1.5
	Burnley	6.2	0.8	5.8	0.5	8.1	1.2	8.6	1.1
	Chorley	5.0	1.0	4	0.8	4.2	1.1	4.7	1.1
	Lancaster	5.0	0.7	6.1	1.4	9.8	1.6	12.0	1.9
Manchester & Cheshire	Bolton	4.3	0.9	4.3	0.9	4.6	1.1	6.2	1.2
	Bury	6.3	1.0	6.1	0.8	7.8	1.2	8.2	1.4
	Leighton	3.2	0.8	3	1.0	4.2	1.3	3.5	1.0
	Macclesfield	6.0	0.7	6.1	0.8	7.8	1.0	2.8	1.1
	Manchester	5.6	0.9	5.2	0.8	7.0	1.1	9.1	1.5
	Oldham	4.0	1.0	5.1	0.7	12.5	2.0	9.2	1.4
	Rochdale	5.8	1.2	6.2	1.0	4.9	0.9	3.7	0.9
	Stepping Hill	6.4	0.8	6.7	1.1	11.2	1.4	12.5	1.2
	Tameside	8.4	1.2	5.9	0.8	5.6	0.9	6.2	0.8
	Aintree	7.0	1.2	4.8	0.9	4.6	1.0	5.3	1.1
Merseyside & Cheshire	Arrowe Park	6.6	0.7	4.9	0.9	5.6	1.2	5.6	1.2
	Chester	3.9	0.9	5.2	1.0	6.8	1.3	6.3	1.2
	Liverpool	5.5	1.4	5.2	1.5	6.4	1.8	6.6	1.3
	Southport	6.0	1.3	3.7	1.1	4.3	1.3	6.6	2.0
	Warrington	5.4	1.4	3.5	1.2	3.9	1.4	4.9	1.1
	Whiston	4.7	1.0	4.7	1.0	7.3	1.5	8.5	1.3
Northern	Carlisle	6.1	1.0	5.6	1.2	5.2	1.3	3.9	1.3

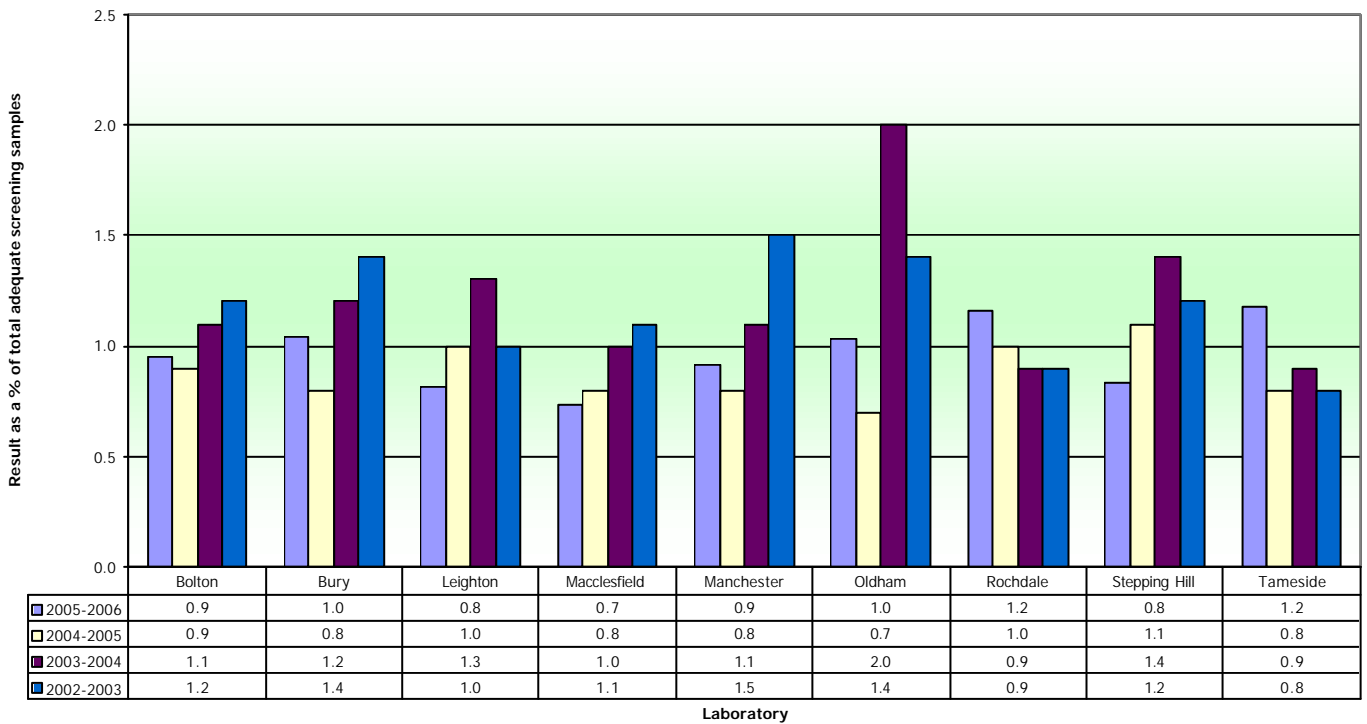
* All reporting profiles are taken from the 10th to 90th percentile range 2005-2006 as shown in Cervical Screening Programme England 2005-06

Source Cervical Screening Programme, England: 2005-06 Bulletin: 2006/24/HSCIC Table 19 © 2006, The Information Centre

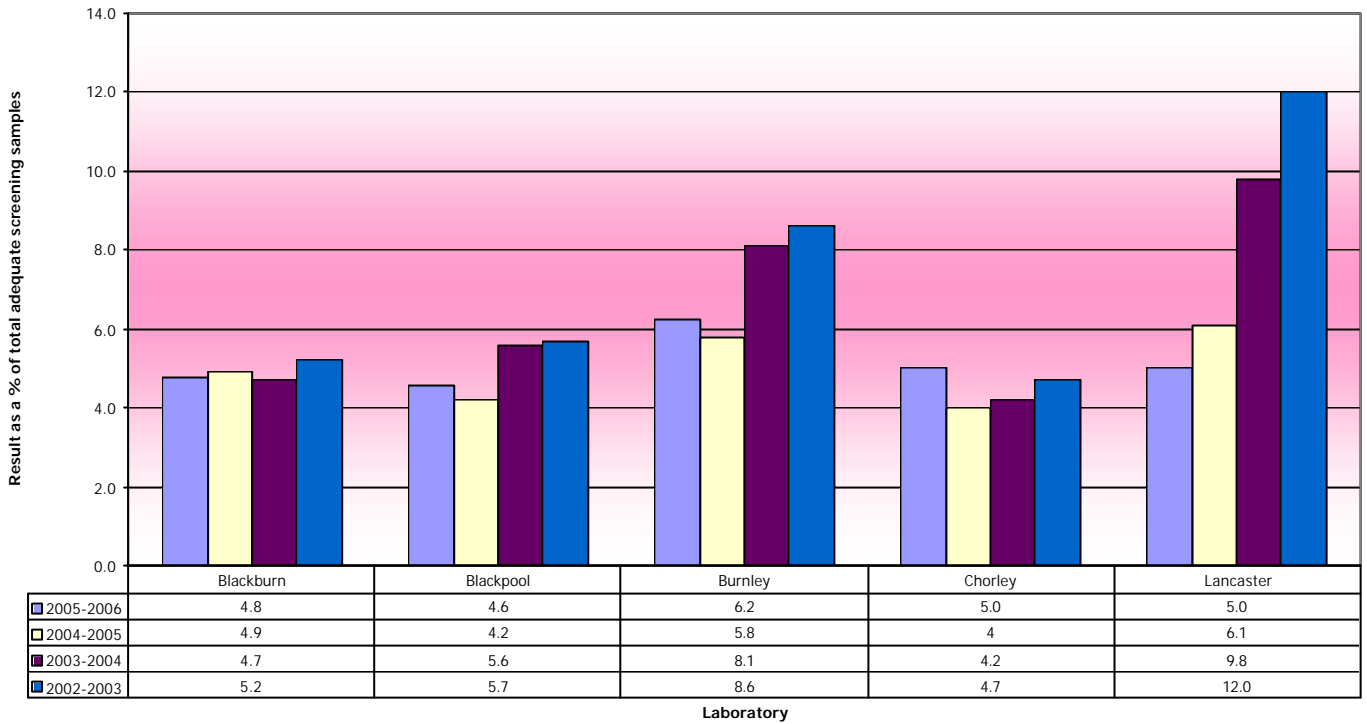
Laboratory Reporting Profiles for Low Grade (Borderline/Mild) Sample Results for Greater Manchester & Cheshire Cancer Network



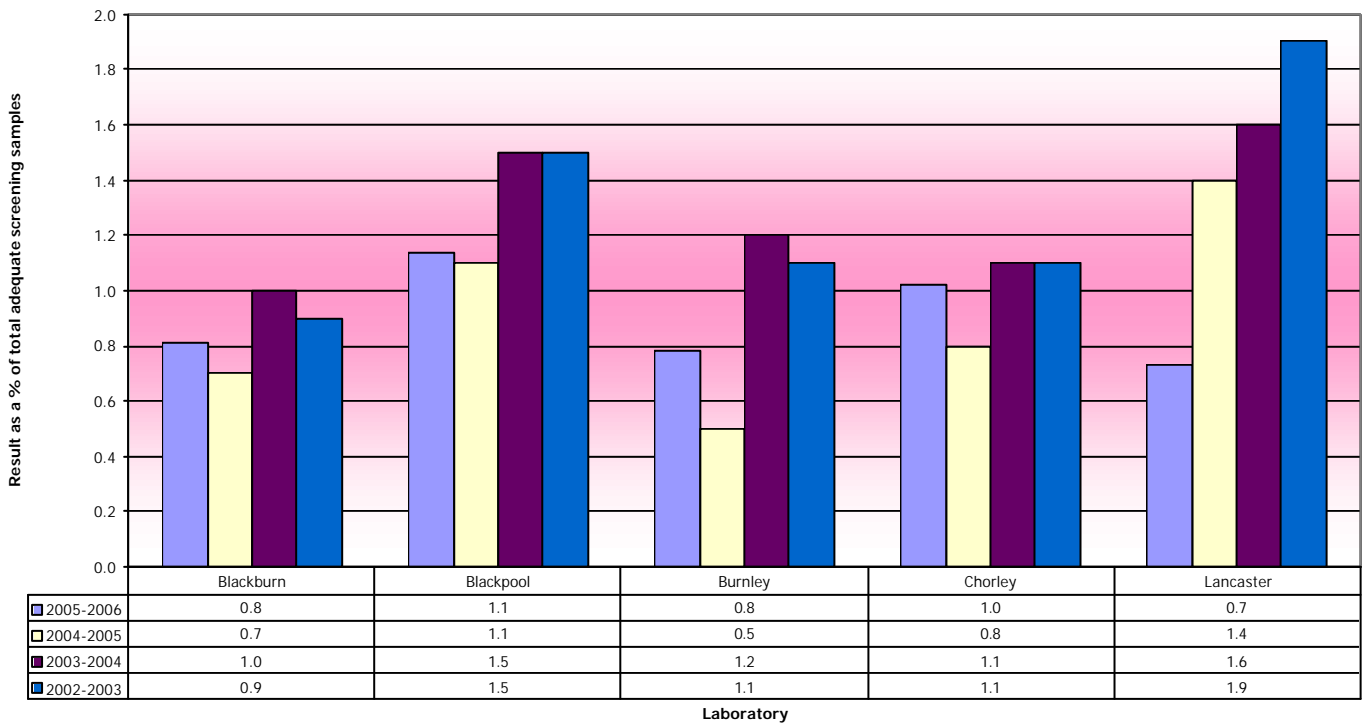
Laboratory Reporting Profiles for High Grade (Moderate/Severe & above) Sample Results for Greater Manchester & Cheshire Cancer Network



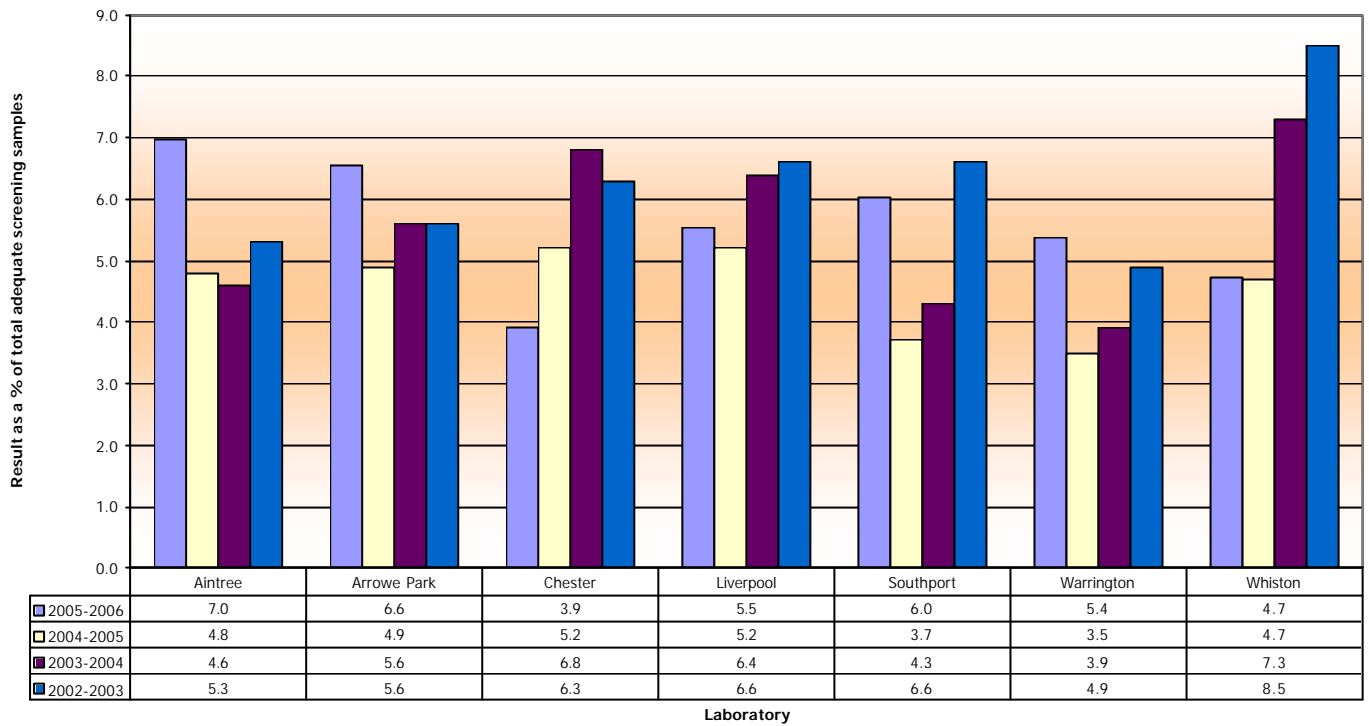
Laboratory Reporting Profiles for Low Grade (Borderline/Mild) Sample Results for Lancashire & South Cumbria Cancer Network



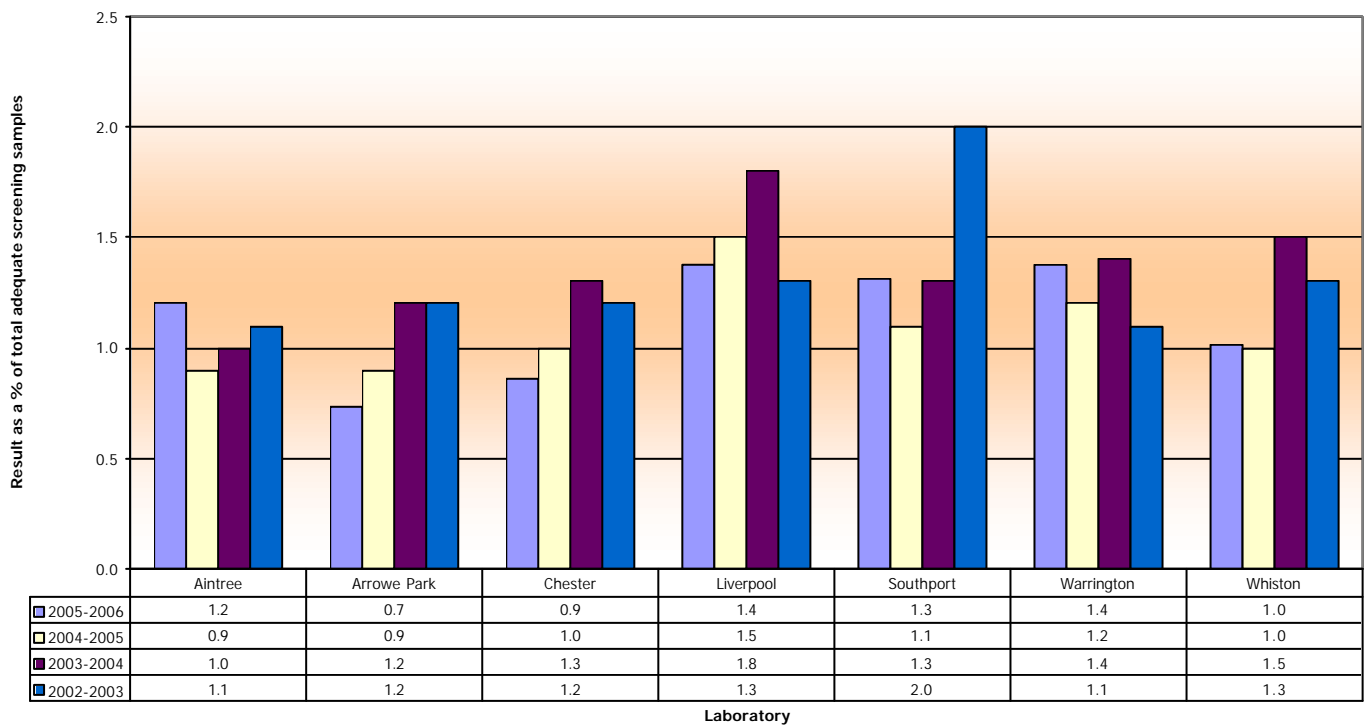
Laboratory Reporting Profiles for High Grade (Moderate/Severe & above) Sample Results for Lancashire & South Cumbria Cancer Network



Laboratory Reporting Profiles for Low Grade (Borderline/Mild) Sample Results for Merseyside & Cheshire Cancer Network



Laboratory Reporting Profiles for High Grade (Moderate/Severe & above) Sample Results for Merseyside & Cheshire Cancer Network



Measuring laboratory performance in the North West

2002-03 to 2005-06

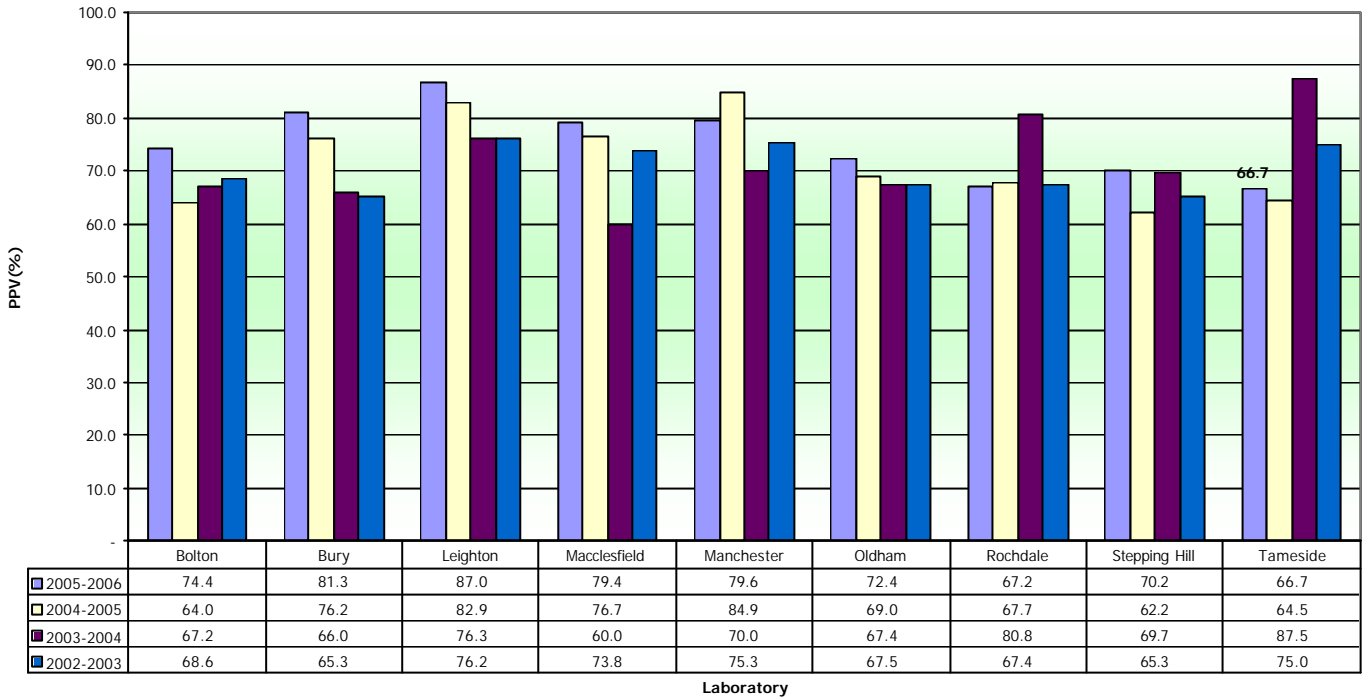
PPV %

Correlation of Cytology & Histology Quality Standard 66.9% to 87.0%		Positive Predictive Value (%)							
		2005-2006		2004-2005		2003-2004		2002-2003	
Laboratory by Cancer Network		Part C1 Apr 05 - Jun 05	Part C2 Apr 04 - Mar 05	Part C1 Apr 04 - Jun 04	Part C2 Apr 03 - Mar 04	Part C1 Apr 03 - Jun 03	Part C2 Apr 02 - Mar 03	Part C1 Apr 02 - Jun 02	Part C2 Apr 01 - Mar 02
Lancs & S Cumbria	Blackburn	59.3	59.9	74.2	71.0	71.4	75.9	76.2	61.1
	Blackpool	82.5	83.4	92.1	77.6	84.3	79.9	83.1	79.8
	Burnley	86.7	82.3	83.3	72.7	66.0	74.2	59.3	72.6
	Chorley	80.3	80.8	69.2	74.6	75.4	75.1	68.8	72.9
	Lancaster	68.6	71.9	63.8	67.9	68.6	66.6	62.0	67.9
Manchester & Cheshire	Bolton	74.4	73.8	64.0	74.2	67.2	71.8	68.6	68.6
	Bury	81.3	82.1	76.2	72.2	66.0	75.6	65.3	76.2
	Leighton	87.0	86.8	82.9	79.7	76.3	81.4	76.2	Data not supplied *
	Macclesfield	79.4	76.2	76.7	70.7	60.0	75.8	73.8	73.8
	Manchester	79.6	80.6	84.9	77.7	70.0	73.9	75.3	74.7
	Oldham	72.4	78.9	69.0	65.8	67.4	68.7	67.5	71.8
	Rochdale	67.2	73.6	67.7	70.1	80.8	69.5	67.4	69.4
	Stepping Hill	70.2	73.0	62.2	70.4	69.7	69.7	65.3	64.7
Tameside	66.7	69.2	64.5	85.9	87.5	78.7	75.0	78.1	
Merseyside & Cheshire	Aintree	89.4	85.5	85.7	79.9	79.6	74.4	76.4	Data not supplied *
	Arrowe Park	80.4	80.7	84.2	76.7	71.7	74.5	68.8	75.2
	Chester	81.6	74.0	74.5	69.5	71.4	76.1	67.8	Data not supplied *
	Liverpool	82.7	84.6	84.0	85.3	89.2	81.3	72.0	75.4
	Southport	68.1	76.6	75.0	65.9	57.1	59.7	65.2	Data not supplied *
	Warrington	84.6	85.1	85.5	79.5	71.4	80.9	72.8	Data not supplied *
	Whiston	86.2	81.7	76.6	77.1	74.5	78.7	72.9	Data not supplied *
North hern	Carlisle	91.4	82.3	82.1	85.4	85.5	84.8	87.3	80.7

Source Cervical Screening Programme, England:2005-06 Bulletin: 2006/24/HSCIC Table 19 © 2006, The Information Centre

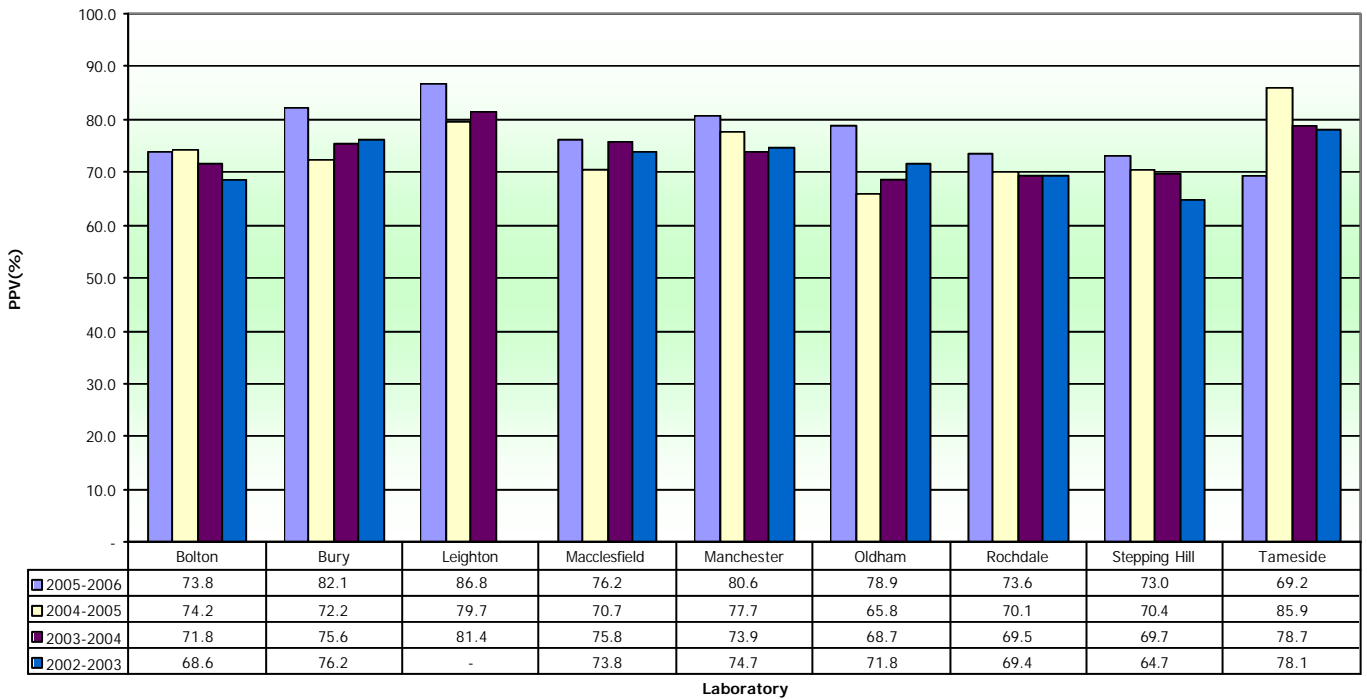
Positive Predictive Value (C1) by Laboratory 2002-2006 for Greater Manchester & Cheshire Cancer Network.

Standard 66.9% to 87%



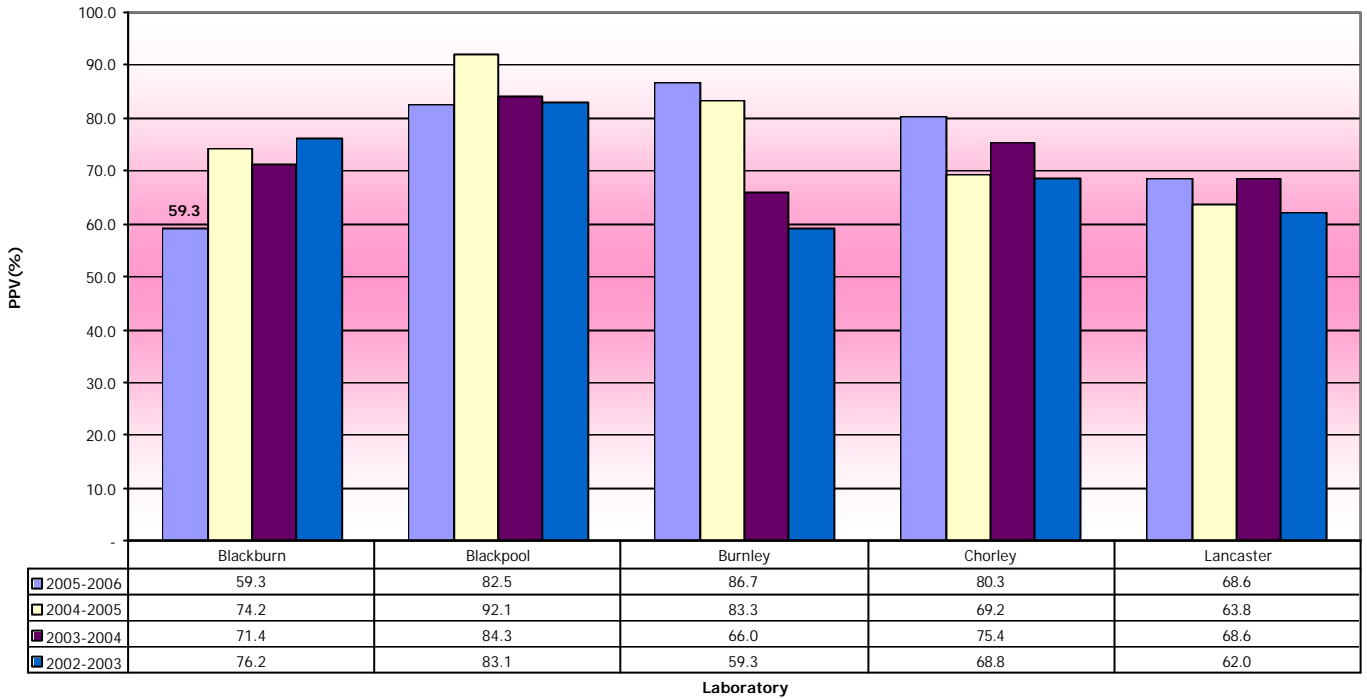
Positive Predictive Value (C2) by Laboratory 2002-2006 for Greater Manchester & Cheshire Cancer Network.

Standard 66.9% to 87%



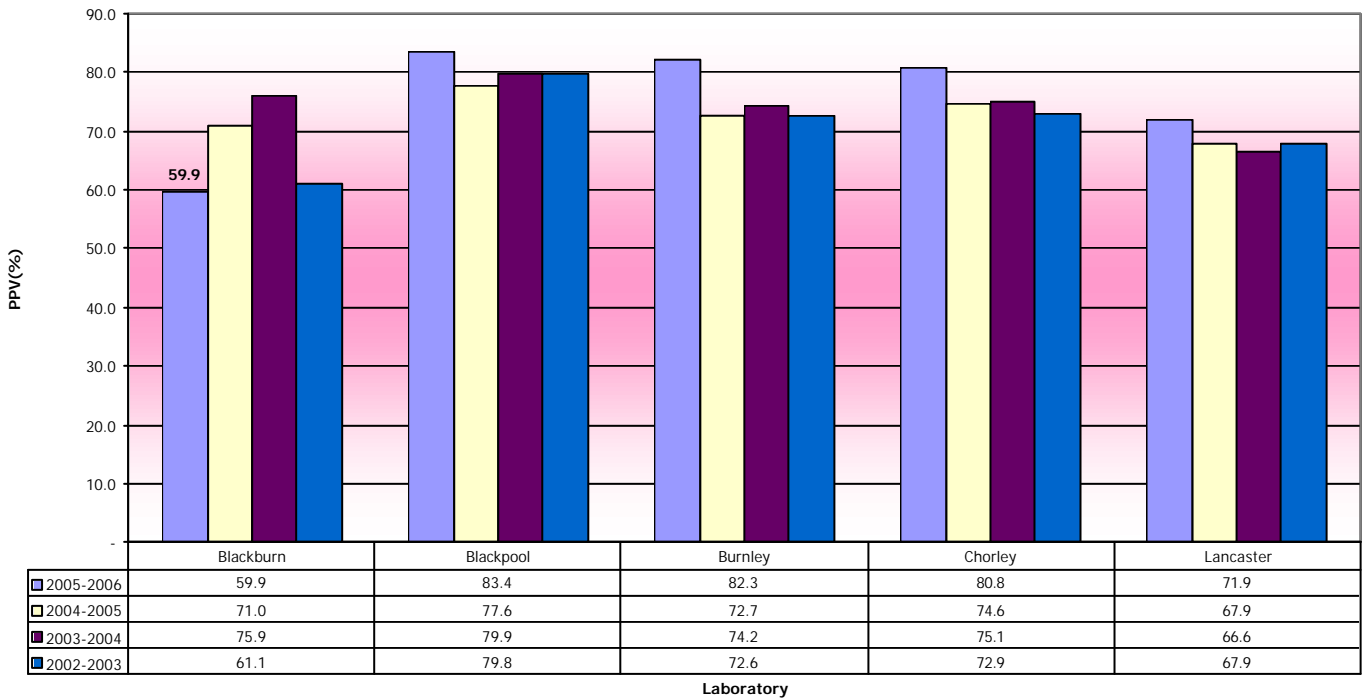
Positive Predictive Value (C1) by Laboratory 2002-2006 for Lancashire & South Cumbria Cancer Network.

Standard 66.9% to 87%



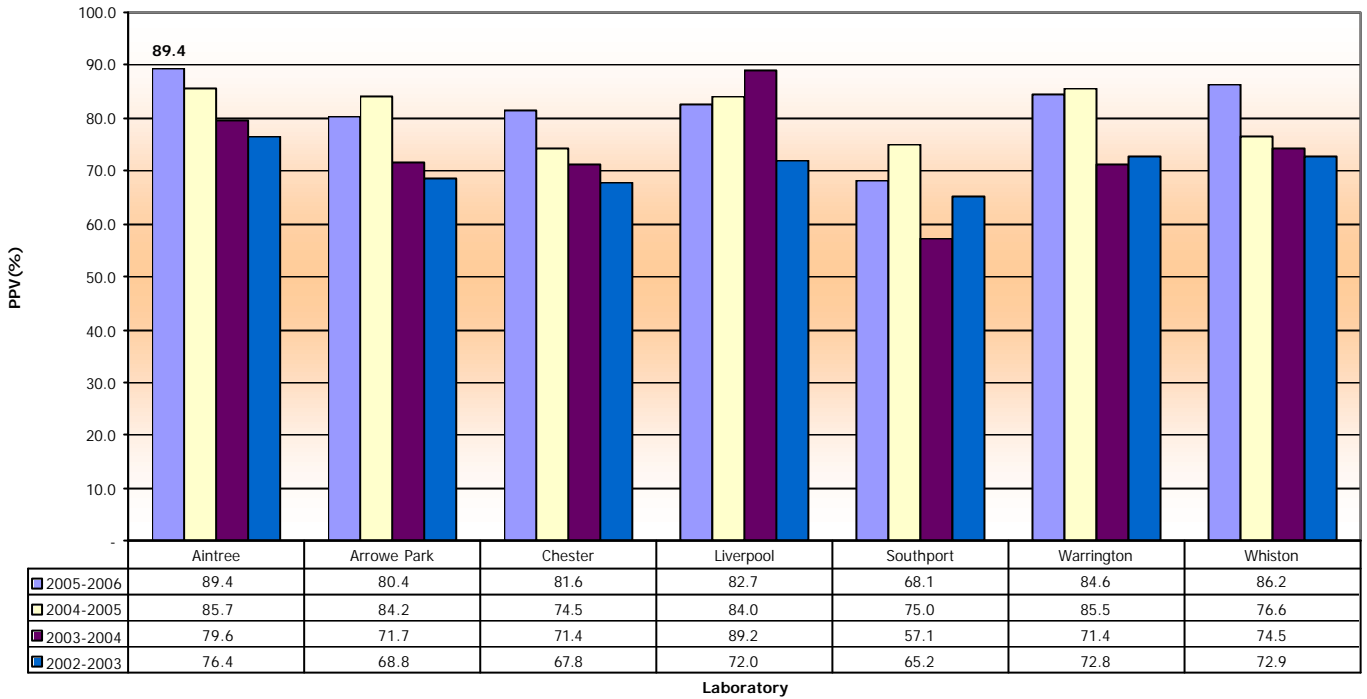
Positive Predictive Value (C2) by Laboratory 2002-2006 for Lancashire & South Cumbria Cancer Network.

Standard 66.9% to 87%



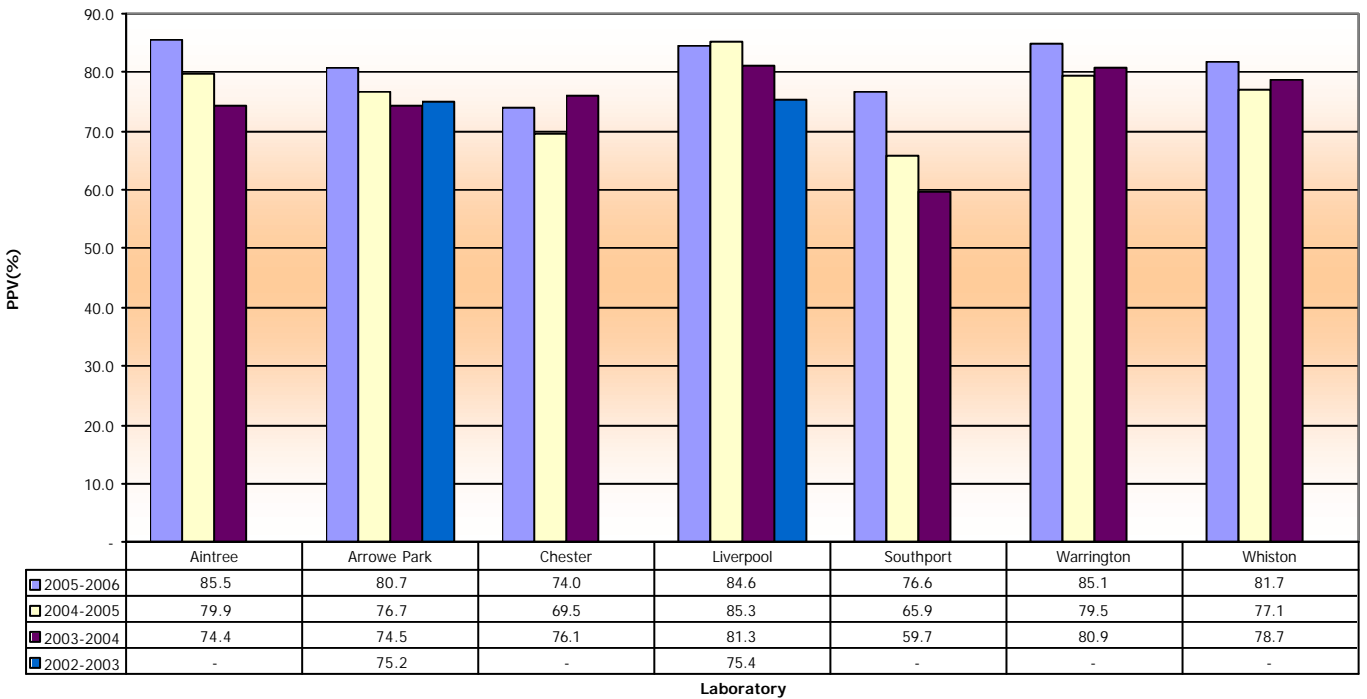
Positive Predictive Value (C1) by Laboratory 2002-2006 for Merseyside & Cheshire Cancer Network.

Standard 66.9% to 87%



Positive Predictive Value (C2) by Laboratory 2002-2006 for Merseyside & Cheshire Cancer Network.

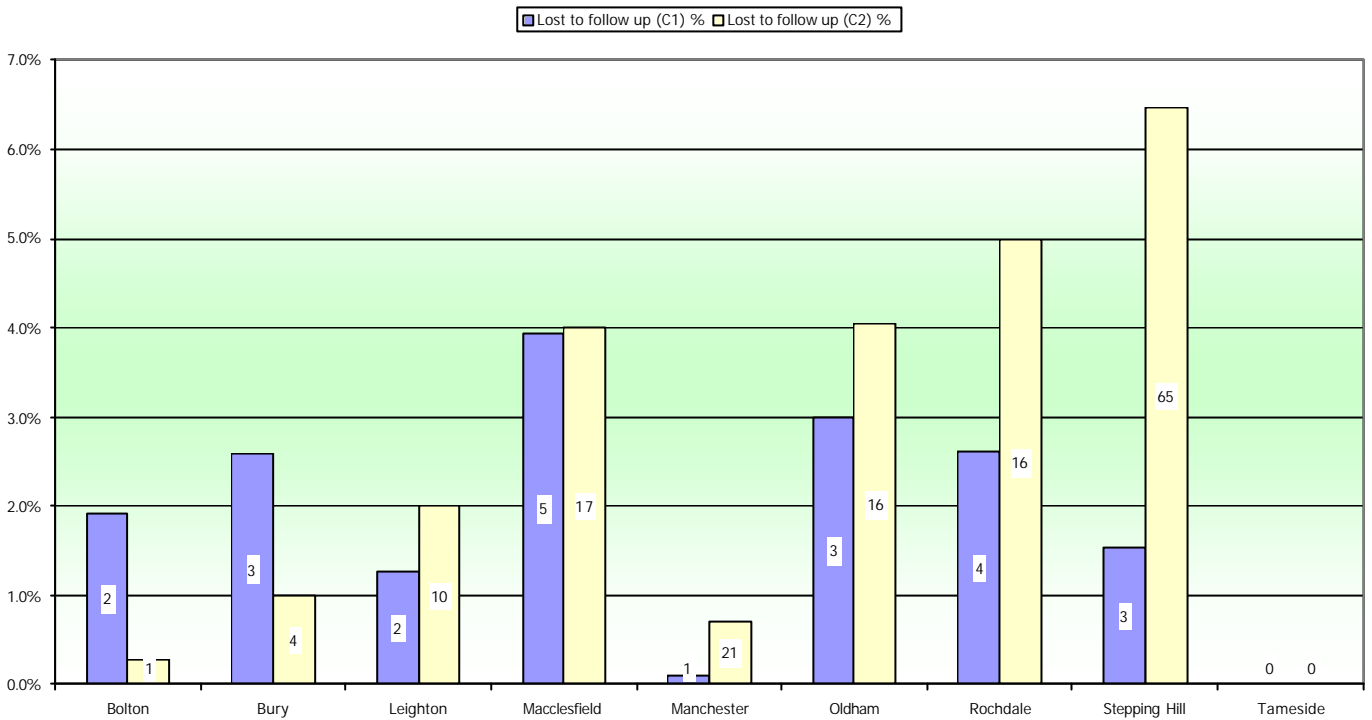
Standard 66.9% to 87%



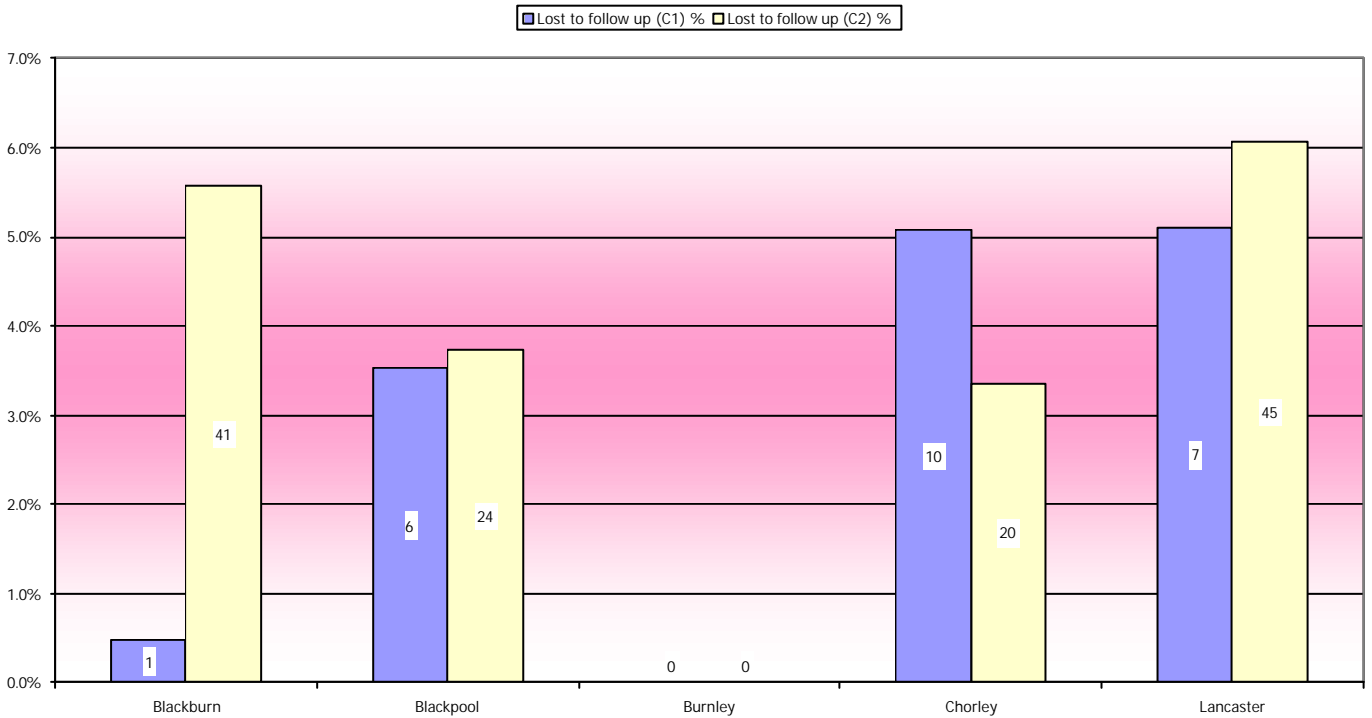
KC61 Parts C1 & C2 Lost to follow up as a percentage (target < 5%) and number

Laboratory by Cancer Network		Lost to follow up (C1)		Lost to follow up (C2)	
		%	number	%	number
Lancs & S Cumbria	Blackburn	0.5%	1	5.6%	41
	Blackpool	3.5%	6	3.7%	24
	Burnley	0.0%	0	0.0%	0
	Chorley	5.1%	10	3.4%	20
	Lancaster	5.1%	7	6.1%	45
Manchester & Cheshire	Bolton	1.9%	2	0.3%	1
	Bury	2.6%	3	1.0%	4
	Leighton	1.3%	2	2.0%	10
	Macclesfield	3.9%	5	4.0%	17
	Manchester	0.1%	1	0.7%	21
	Oldham	3.0%	3	4.0%	16
	Rochdale	2.6%	4	5.0%	16
	Stepping Hill	1.5%	3	6.5%	65
	Tameside	0.0%	0	0.0%	0
Merseyside & Cheshire	Aintree	4.0%	9	2.3%	19
	Arrowe Park	0.0%	0	0.0%	0
	Chester	3.3%	7	3.0%	22
	Liverpool	5.4%	13	4.0%	34
	Southport	4.8%	5	2.0%	7
	Warrington	5.3%	16	6.3%	51
	Whiston	0.0%	0	0.7%	5
Northern	Carlisle	2.6%	5	1.4%	10

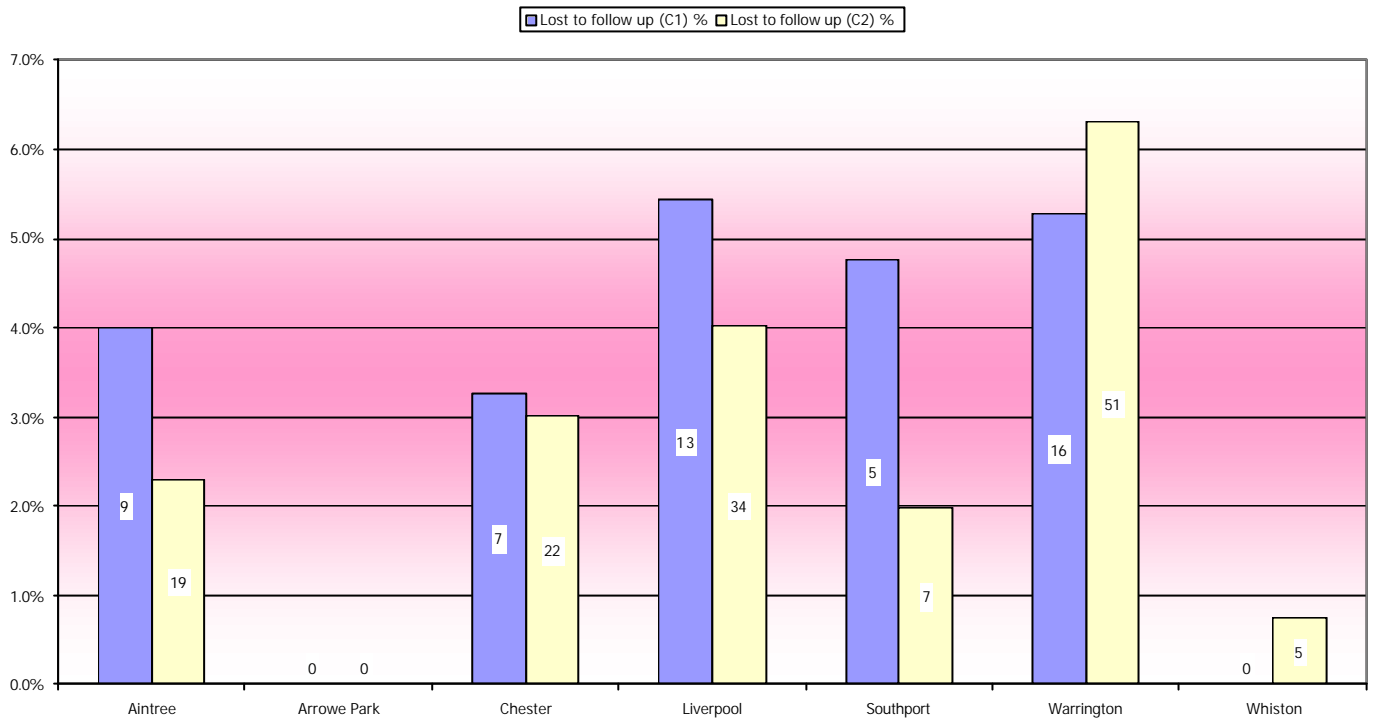
KC61 Parts C1 & C2 - Lost to follow up as a percentage (number in columns equals number of women).
Greater Manchester & Cheshire Cancer Network
 Target < 5%



KC61 Parts C1 & C2 - Lost to follow up as a percentage (number in columns equals number of women). Lancashire & South Cumbria Cancer Network
 Target < 5%



KC61 Parts C1 & C2 - Lost to follow up as a percentage (number in columns equals number of women). Merseyside & Cheshire Cancer Network
 Target < 5%



Measuring laboratory performance in the North West

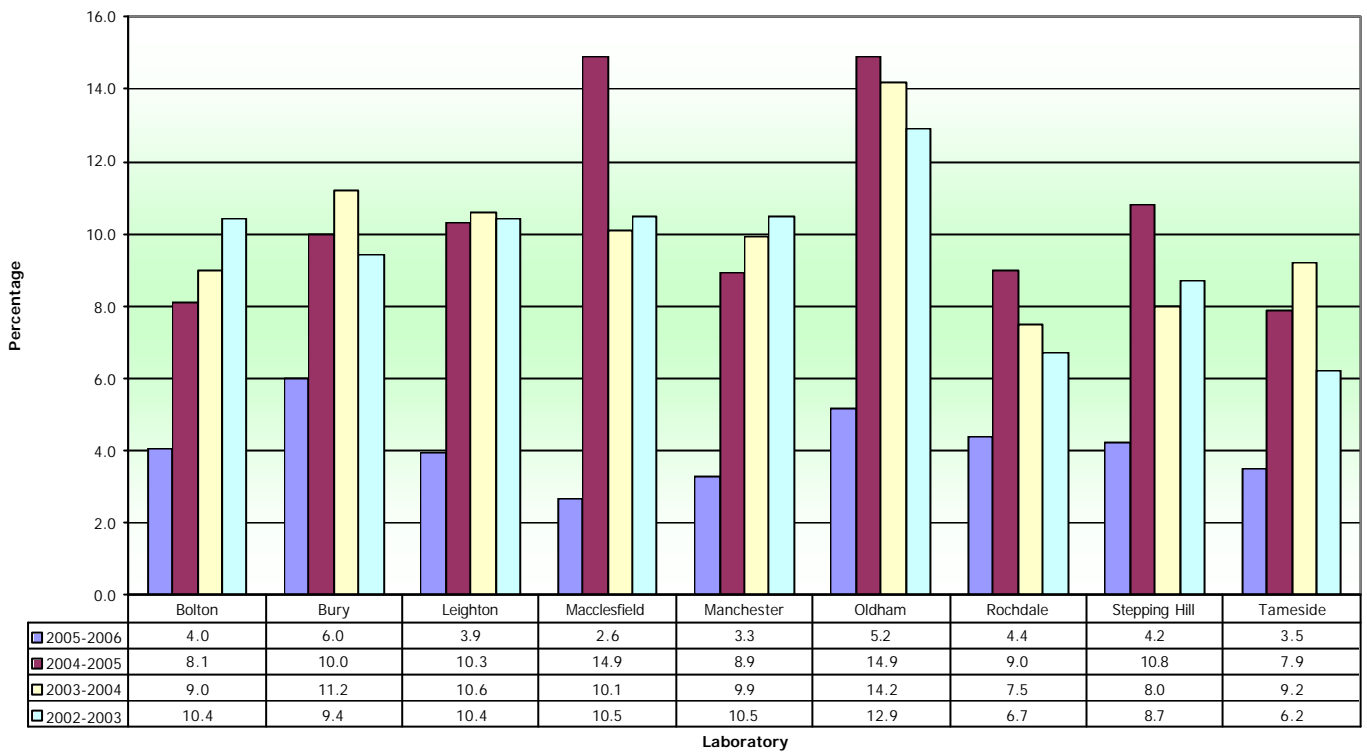
2002-03 to 2005-06

Inadequate Smears

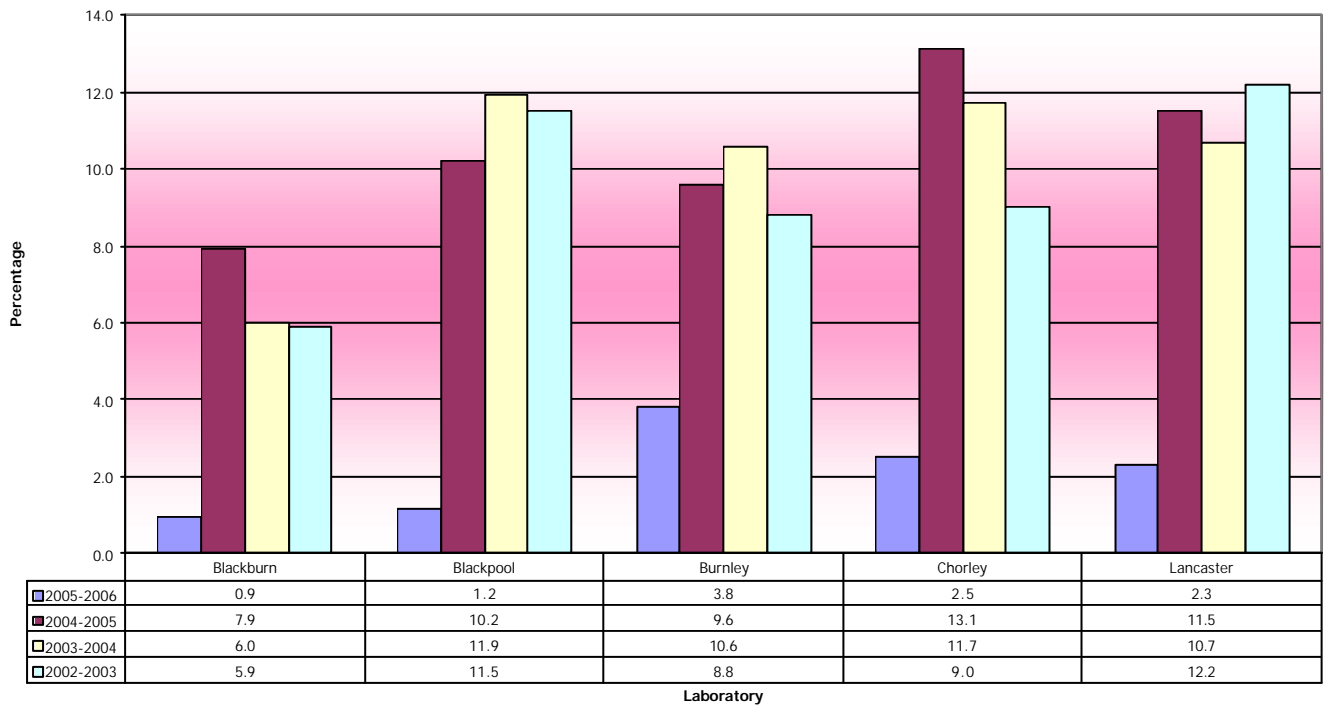
Laboratory by Cancer Network		Inadequate Samples										
		2005-2006			2004-2005			2003-2004			2002-2003	
		Number of inadequate samples	(%)	Annual difference	Number of inadequate samples	(%)	Annual difference	Number of inadequate samples	(%)	Annual difference	Number of inadequate samples	(%)
Lancs & S Cumbria	Blackburn	161	0.9	-7.0	1259	7.9	1.9	1159	6.0	0.1	1204	5.9
	Blackpool	215	1.2	-9.0	1666	10.2	-1.7	2377	11.9	0.4	2412	11.5
	Burnley	597	3.8	-5.8	1340	9.6	-1.0	1880	10.6	1.8	1590	8.8
	Chorley	554	2.5	-10.6	2345	13.1	1.4	2841	11.7	2.7	2376	9.0
	Lancaster	447	2.3	-9.2	1847	11.5	0.8	2126	10.7	-1.5	2281	12.2
Manchester & Cheshire	Bolton	876	4.0	-4.1	1269	8.1	-0.9	1790	9.0	-1.4	2489	10.4
	Bury	792	6.0	-4.0	1163	10.0	-1.2	1771	11.2	1.8	1340	9.4
	Leighton	775	3.9	-6.4	1825	10.3	-0.3	2024	10.6	0.2	2157	10.4
	Macclesfield	433	2.6	-12.3	1953	14.9	4.8	1697	10.1	-0.4	1850	10.5
	Manchester	2802	3.3	-5.6	6515	8.9	-1.0	9450	9.9	-0.6	10409	10.5
	Oldham	674	5.2	-9.7	1502	14.9	0.7	2459	14.2	1.3	2071	12.9
	Rochdale	585	4.4	-4.6	1052	9.0	1.5	1057	7.5	0.8	967	6.7
	Stepping Hill	1015	4.2	-6.6	2372	10.8	2.8	1935	8.0	-0.7	2268	8.7
	Tameside	481	3.5	-4.4	984	7.9	-1.3	1462	9.2	3.0	988	6.2
	Aintree	160	0.9	-11.3	2005	12.2	-0.1	2604	12.3	1.3	2414	11.0
Merseyside & Cheshire	Arrowe Park	446	2.0	-10.9	2656	12.9	0.4	3081	12.5	2.2	2534	10.3
	Chester	944	4.8	-7.6	2204	12.4	0.8	2510	11.6	1.7	2260	9.9
	Liverpool	985	5.0	-10.0	2611	15.0	-0.4	4132	15.4	-1.9	4369	17.3
	Southport	156	1.2	-9.0	1333	10.2	-0.4	1663	10.6	-1.8	1889	12.4
	Warrington	1457	5.5	-8.8	2620	14.3	3.5	2560	10.8	1.2	2494	9.6
	Whiston	1249	7.0	-10.9	2630	17.9	2.9	2937	15.0	3.1	2494	11.9
	Carlisle	138	0.6	-5.1	1202	5.7	-0.1	1455	5.8	-0.5	1598	6.3
Average			3.4	-7.9		11.3	0.6		10.7	0.6		10.1

Source Cervical Screening Programme, England:2005-06 Bulletin: 2006/24/HSCIC Table 19 © 2006, The Information Centre

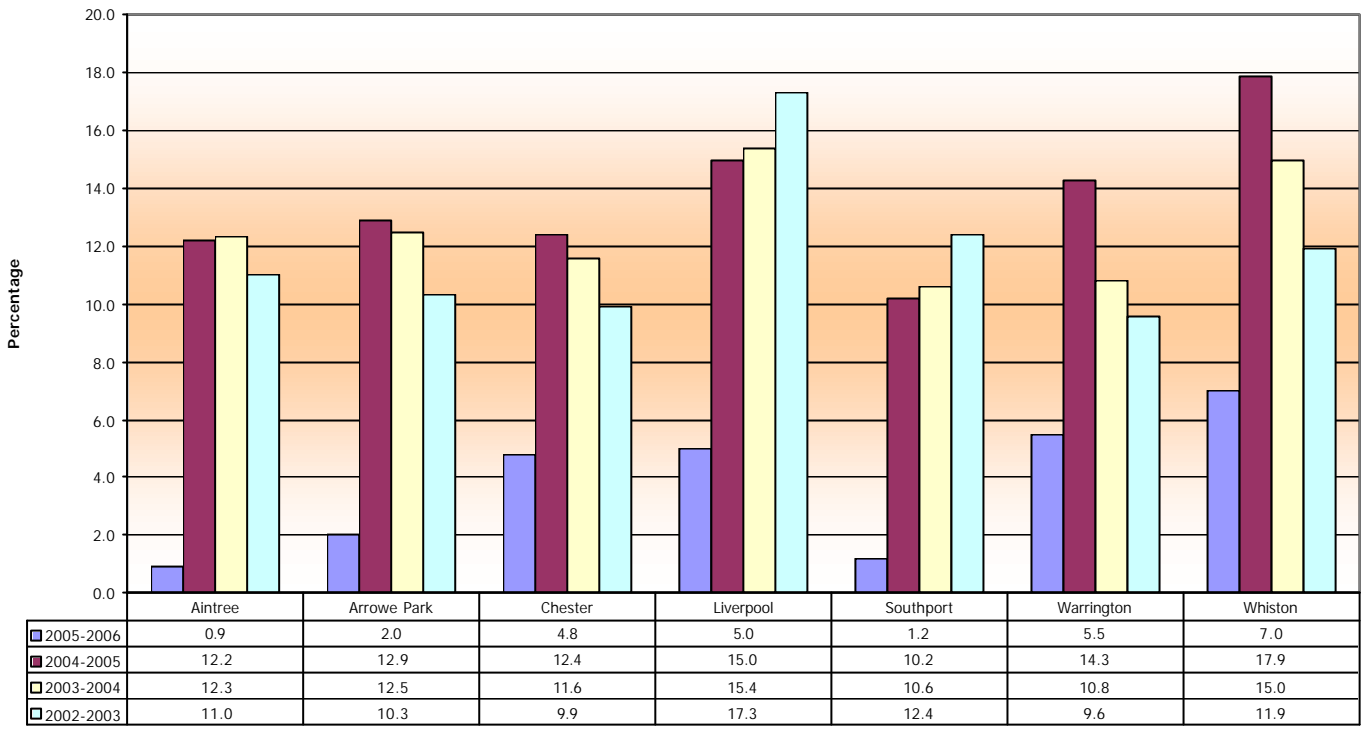
Inadequate Rates by Laboratory 2002-2006 for Greater Manchester & Cheshire Cancer Network



Inadequate Rates by Laboratory 2002-2006 for Lancashire & South Cumbria Cancer Network



Inadequate Rates by Laboratory 2002-2006 for Merseyside & Cheshire Cancer Network



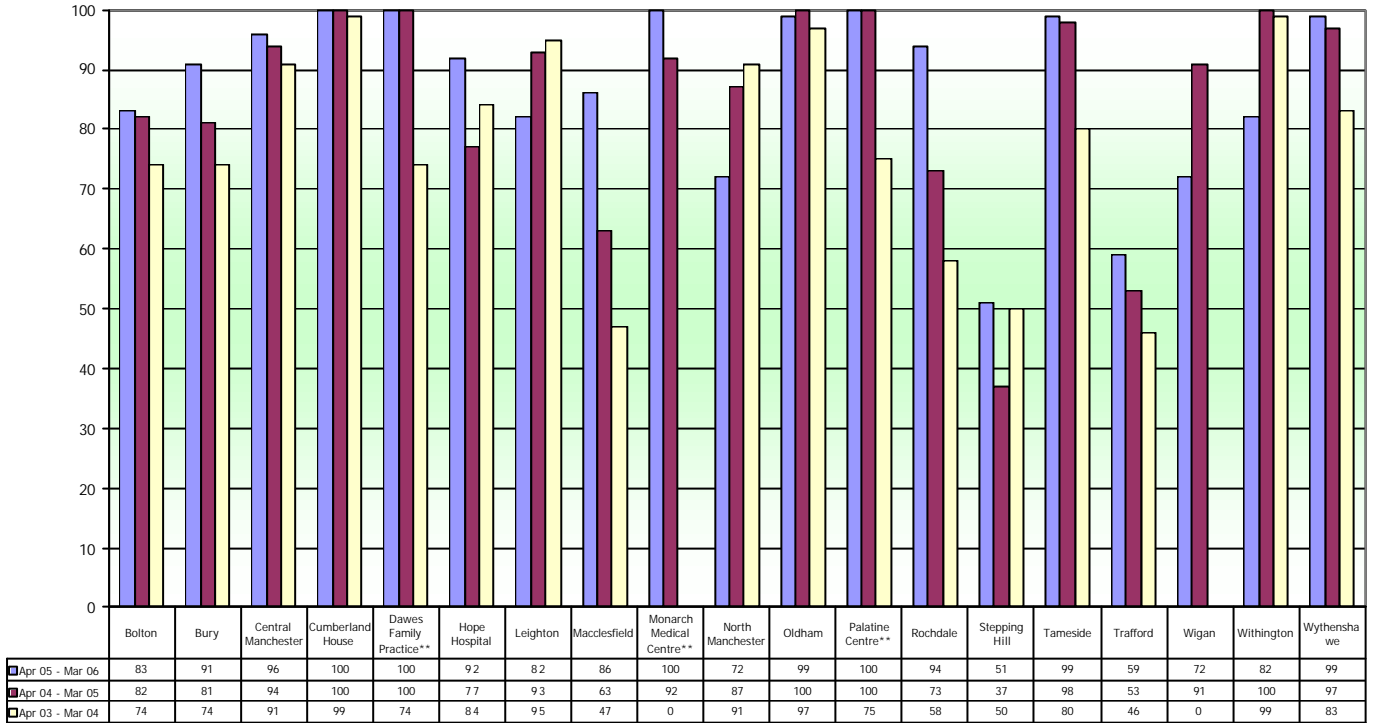
DOH Return KC65

Measuring Colposcopy clinic performance in the North West

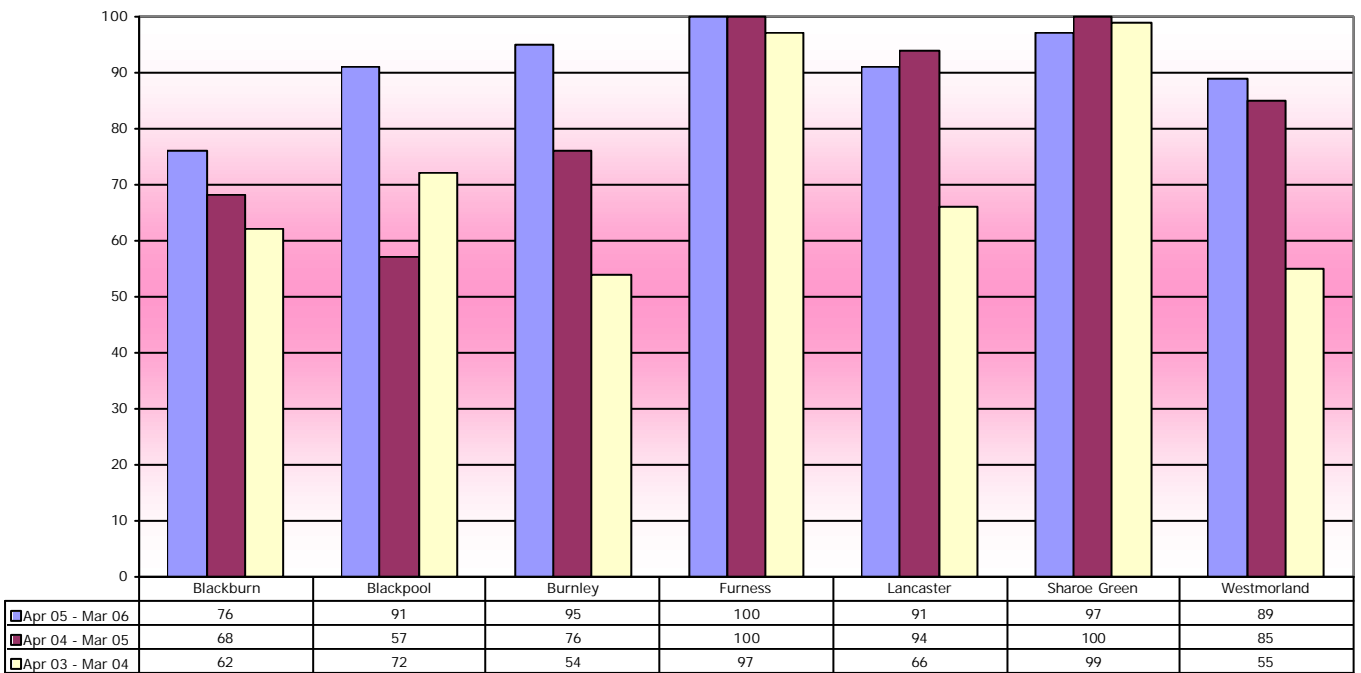
1st April 2005 to 31st March 2006

Percentage of all referrals seen within 8 weeks (standard 90%)				
Colposcopy unit by Cancer Network		Apr 05 - Mar 06	Apr 04 - Mar 05	Apr 03 - Mar 04
Lancs & S Cumbria	Blackburn	76	68	62
	Blackpool	91	57	72
	Burnley	95	76	54
	Furness	100	100	97
	Lancaster	91	94	66
	Sharoe Green	97	100	99
	Westmorland	89	85	55
	Bolton	83	82	74
Manchester & Cheshire	Bury	91	81	74
	Central Manchester	96	94	91
	Cumberland House	100	100	99
	Dawes Family Practice**	100	100	74
	Hope Hospital	92	77	84
	Leighton	82	93	95
	Macclesfield	86	63	47
	Monarch Medical Centre**	100	92	0
	North Manchester	72	87	91
	Oldham	99	100	97
	Palatine Centre**	100	100	75
	Rochdale	94	73	58
	Stepping Hill	51	37	50
	Tameside	99	98	80
	Trafford	59	53	46
	Wigan	72	91	0
	Withington	82	100	99
Wythenshawe	99	97	83	
Merseyside & Cheshire	Aintree	86	78	91
	Arrowe Park	100	99	91
	Chester	69	86	98
	Liverpool	98	97	93
	LWH	100	99	93
	Southport & Formby	68	83	57
	Southport & Ormskirk	92	72	52
	Warrington	91	81	78
	Whiston	97	95	93
Northern	Cumberland Infirmary	97	96	96
	West Cumberland	57	49	61
North West Regional Average		88	85	74
** GP based practices				

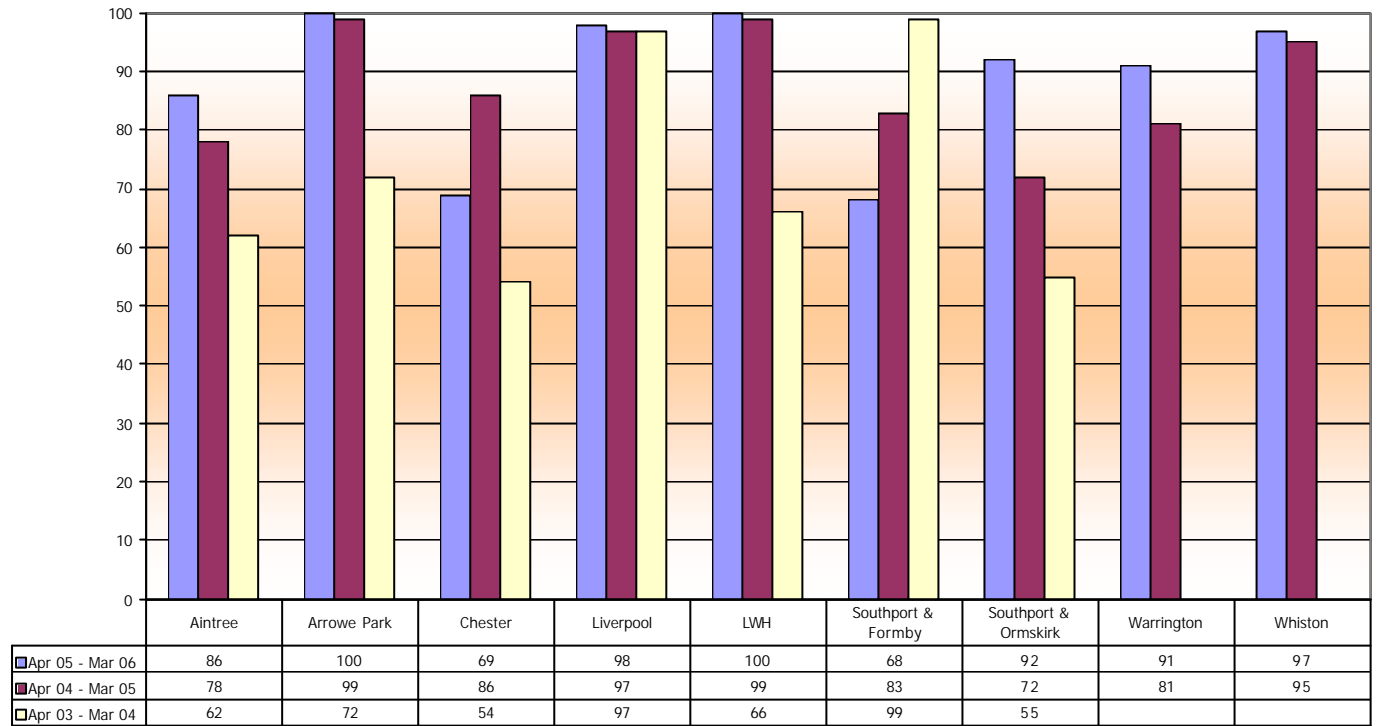
Percentage of all referrals seen within 8 weeks (standard 90%) 2003-04 to 2005-06 Greater Manchester & Cheshire Cancer Network



Percentage of all referrals seen within 8 weeks (standard 90%) 2003-04 to 2005-06 Lancashire & South Cumbria Cancer Network

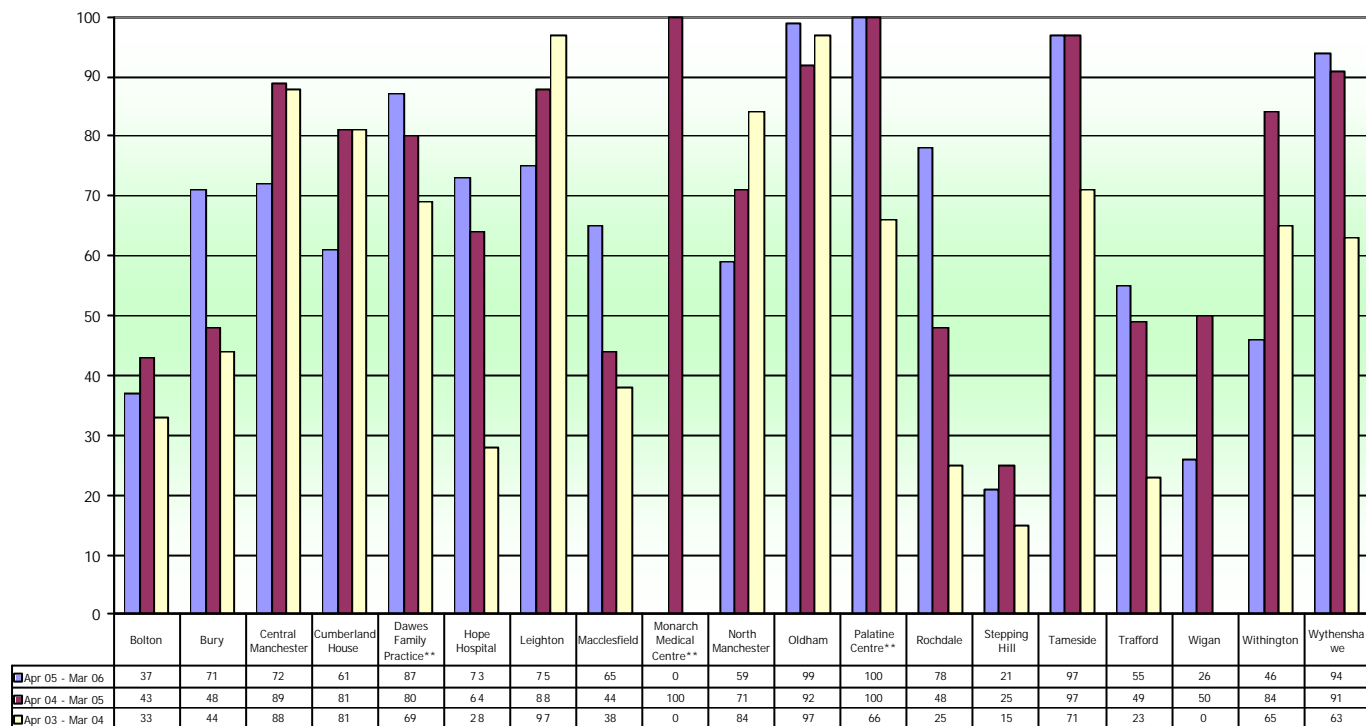


Percentage of all referrals seen within 8 weeks (standard 90%) 2003-04 to 2005-06 Merseyside & Cheshire Cancer Network

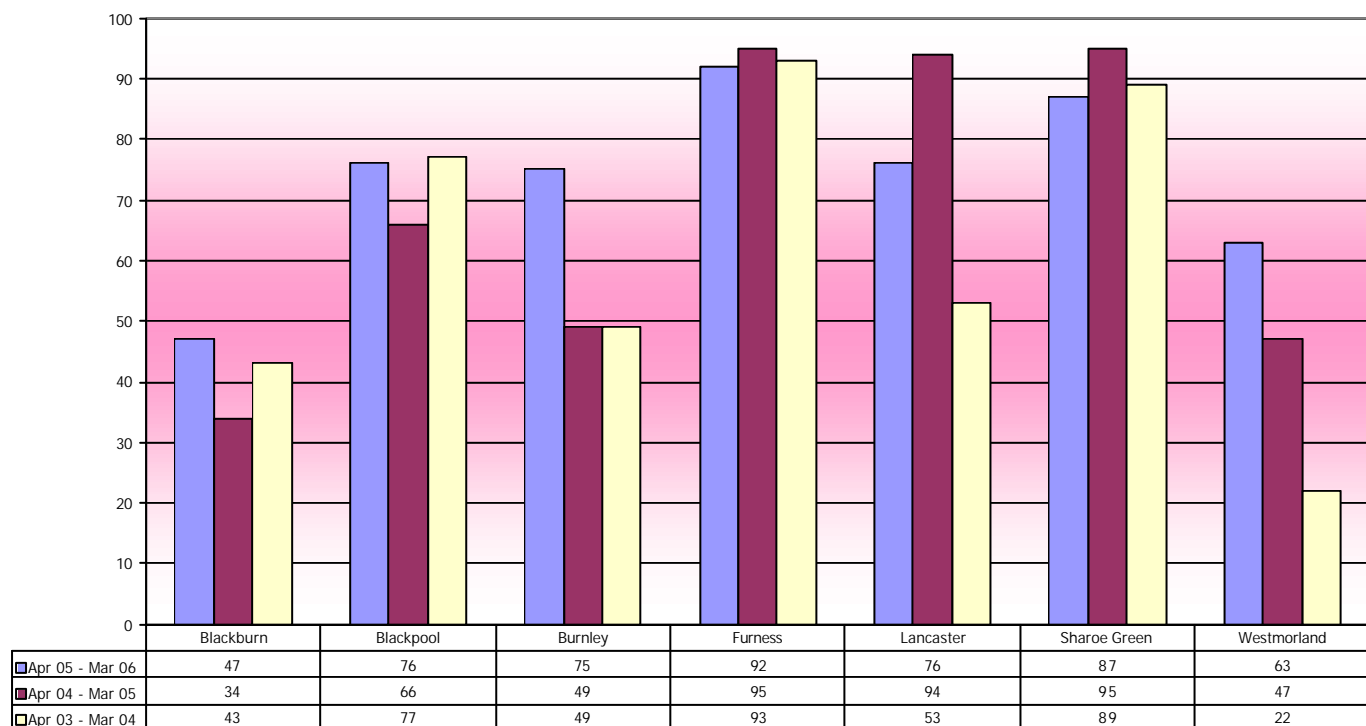


Percentage of moderate & above seen within 4 weeks (standard 90%)				
Colposcopy unit by Cancer Network		Apr 05 - Mar 06	Apr 04 - Mar 05	Apr 03 - Mar 04
Lancs & S Cumbria	Blackburn	47	34	43
	Blackpool	76	66	77
	Burnley	75	49	49
	Furness	92	95	93
	Lancaster	76	94	53
	Sharoe Green	87	95	89
	Westmorland	63	47	22
	Bolton	37	43	33
Manchester & Cheshire	Bury	71	48	44
	Central Manchester	72	89	88
	Cumberland House	61	81	81
	Dawes Family Practice**	87	80	69
	Hope Hospital	73	64	28
	Leighton	75	88	97
	Macclesfield	65	44	38
	Monarch Medical Centre**	n/a	100	0
	North Manchester	59	71	84
	Oldham	99	92	97
	Palatine Centre**	100	100	66
	Rochdale	78	48	25
	Stepping Hill	21	25	15
	Tameside	97	97	71
	Trafford	55	49	23
	Wigan	26	50	0
Withington	46	84	65	
Wythenshawe	94	91	63	
Merseyside & Cheshire	Aintree	95	66	90
	Arrowe Park	97	96	84
	Chester	50	53	71
	Liverpool	100	99	89
	LWH	99	99	85
	Southport & Formby	47	39	39
	Southport & Ormskirk	81	50	27
	Warrington	66	53	44
Whiston	79	81	96	
Northern	Cumberland Infirmary	72	72	66
	West Cumberland	35	11	35
North West Regional Average		71	69	58
** GP based practices				

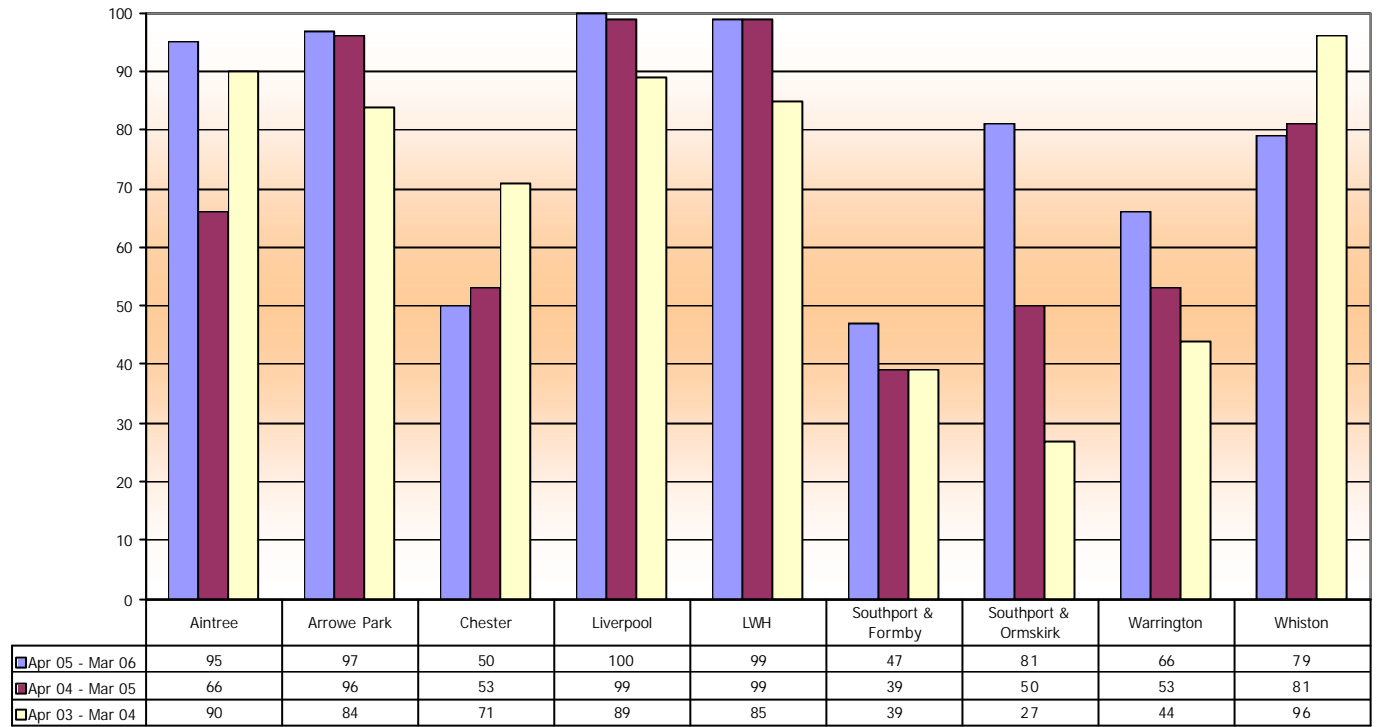
Percentage of moderate/severe referrals seen within 4 weeks (standard 90%) 2003-04 to 2005-06 Greater Manchester & Cheshire Cancer Network



Percentage of moderate/severe referrals seen within 4 weeks (standard 90%) 2003-04 to 2005-06 Lancashire & South Cumbria Cancer Network



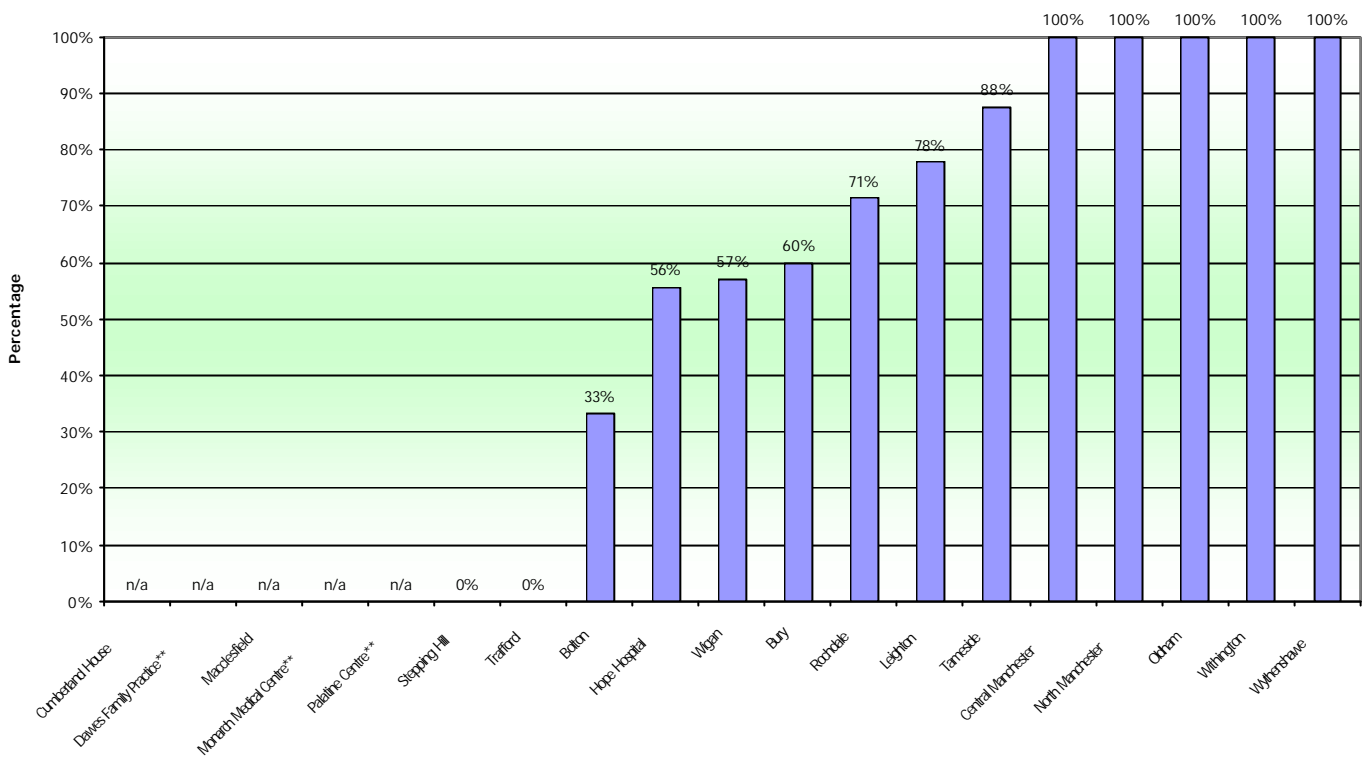
Percentage of moderate/severe referrals seen within 4 weeks (standard 90%) 2003-04 to 2005-06 Merseyside & Cheshire Cancer Network



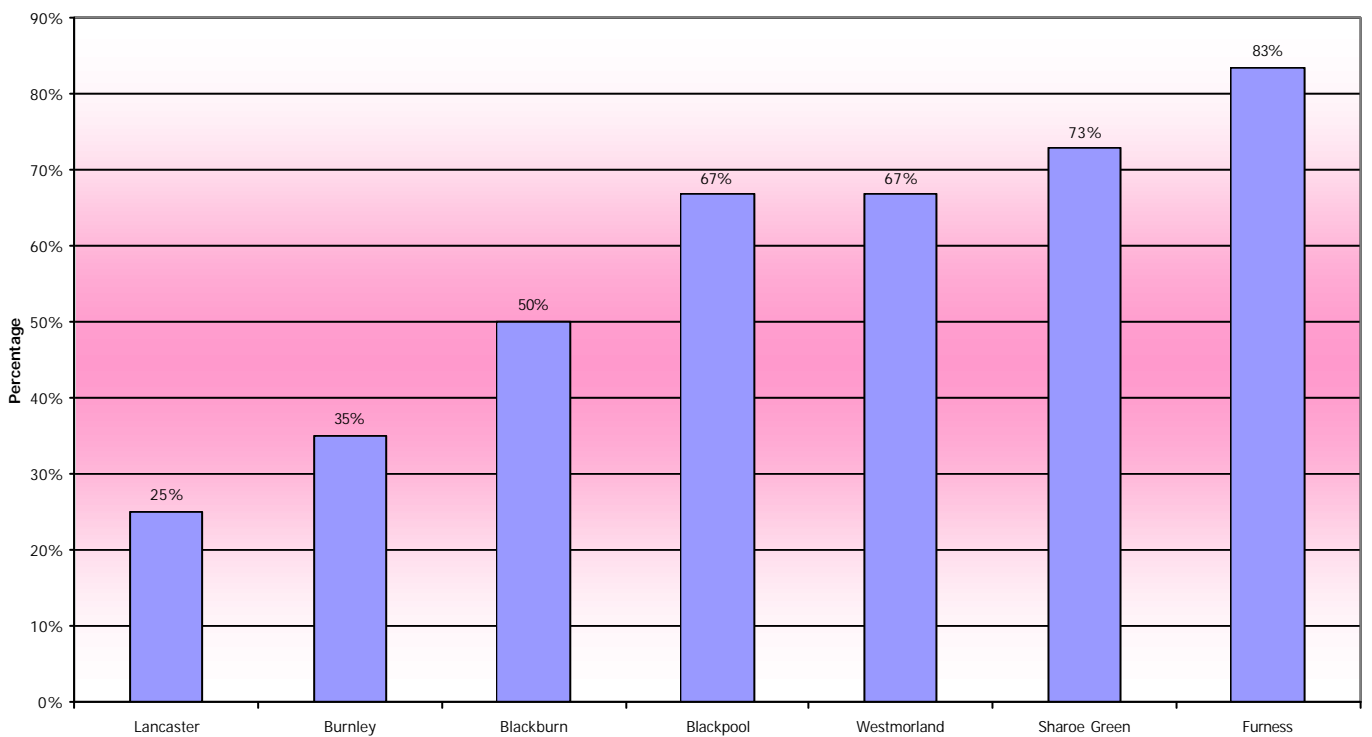
		within 2 weeks			Total			Percentage seen within 2 weeks (standard 90%)
Colposcopy unit by Cancer Network		Severe/? Glandular Invasive neoplasia Total			Severe/? Glandular Invasive neoplasia Total			Apr 05 - Mar 06
Lancs & S Cumbria	Lancaster	0	1	1	0	4	4	25%
	Burnley	1	6	7	1	19	20	35%
	Blackburn	3	0	3	3	3	6	50%
	Blackpool	0	4	4	0	6	6	67%
	Westmorland	1	1	2	1	2	3	67%
	Sharoe Green	1	7	8	1	10	11	73%
	Furness	0	5	5	0	6	6	83%
Manchester & Cheshire	Cumberland House	0	0	0	0	0	0	n/a
	Dawes Family Practice**	0	0	0	0	0	0	n/a
	Macclesfield	0	0	0	0	0	0	n/a
	Monarch Medical Centre**	0	0	0	0	0	0	n/a
	Palatine Centre**	0	0	0	0	0	0	n/a
	Stepping Hill	0	0	0	2	1	3	0%
	Trafford	0	0	0	0	2	2	0%
	Bolton	9	6	15	34	11	45	33%
	Hope Hospital	3	2	5	3	6	9	56%
	Wigan	2	2	4	2	5	7	57%
	Bury	1	2	3	1	4	5	60%
	Rochdale	1	4	5	2	5	7	71%
	Leighton	3	4	7	3	6	9	78%
	Tameside	2	5	7	2	6	8	88%
	Central Manchester	0	1	1	0	1	1	100%
	North Manchester	3	4	7	3	4	7	100%
	Oldham	1	3	4	1	3	4	100%
Withington	0	2	2	0	2	2	100%	
Wythenshawe	1	1	2	1	1	2	100%	
Merseyside & Cheshire	Liverpool	0	0	0	0	0	0	n/a
	Warrington	0	1	1	0	3	3	33%
	Southport & Formby	1	0	1	1	1	2	50%
	Whiston	0	1	1	0	2	2	50%
	Chester	1	5	6	1	8	9	67%
	Arrowe Park	4	2	6	4	4	8	75%
	Aintree	2	12	14	2	15	17	82%
	LWH	1	5	6	1	5	6	100%
Southport & Ormskirk	1	1	2	1	1	2	100%	
Northern	Cumberland Infirmary	0	2	2	0	5	5	40%
	West Cumberland	2	2	4	3	4	7	57%

** GP based practices

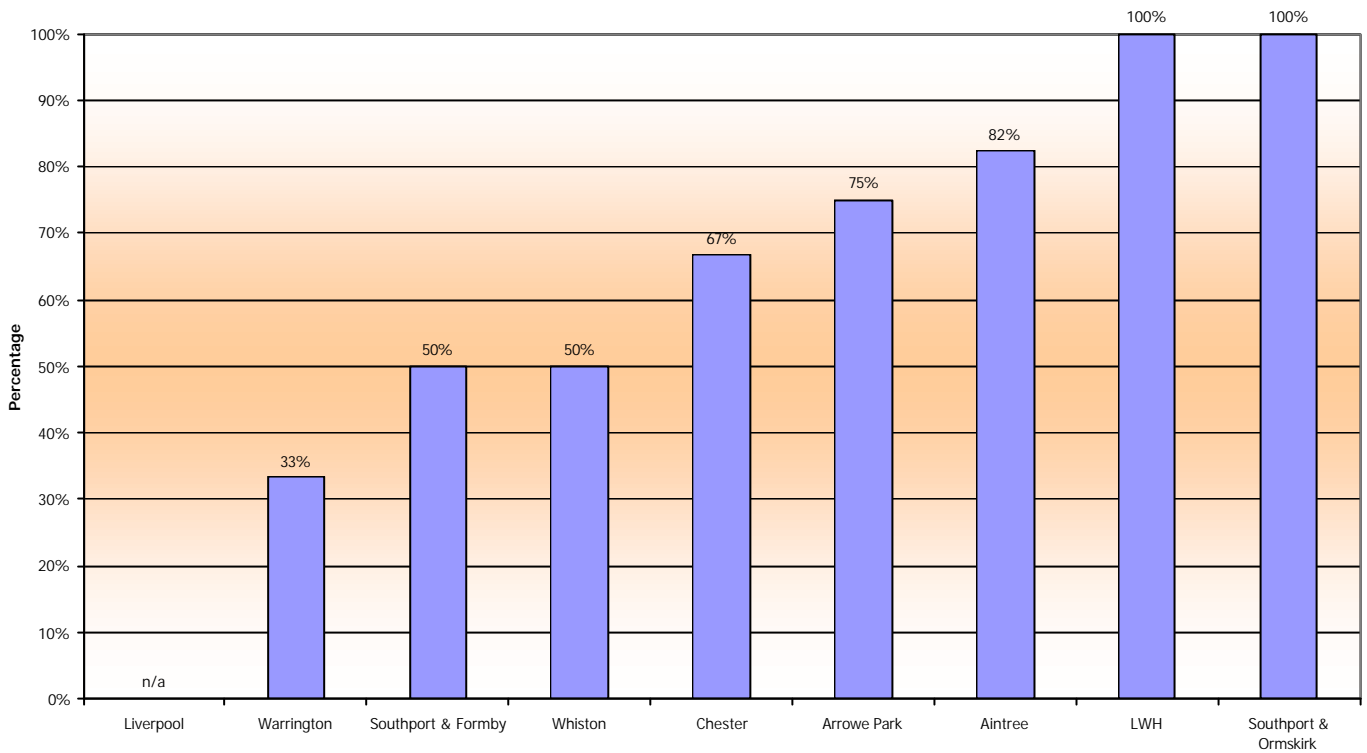
Percentage of all smears reported as possible invasive or glandular neoplasia seen within 2 weeks (standard 90%) for period Apr 05 - Mar 06
Greater Manchester & Cheshire Cancer Network



Percentage of all smears reported as possible invasive or glandular neoplasia seen within 2 weeks (standard 90%) for period Apr 05 - Mar 06
Lancashire & South Cumbria Cancer Network

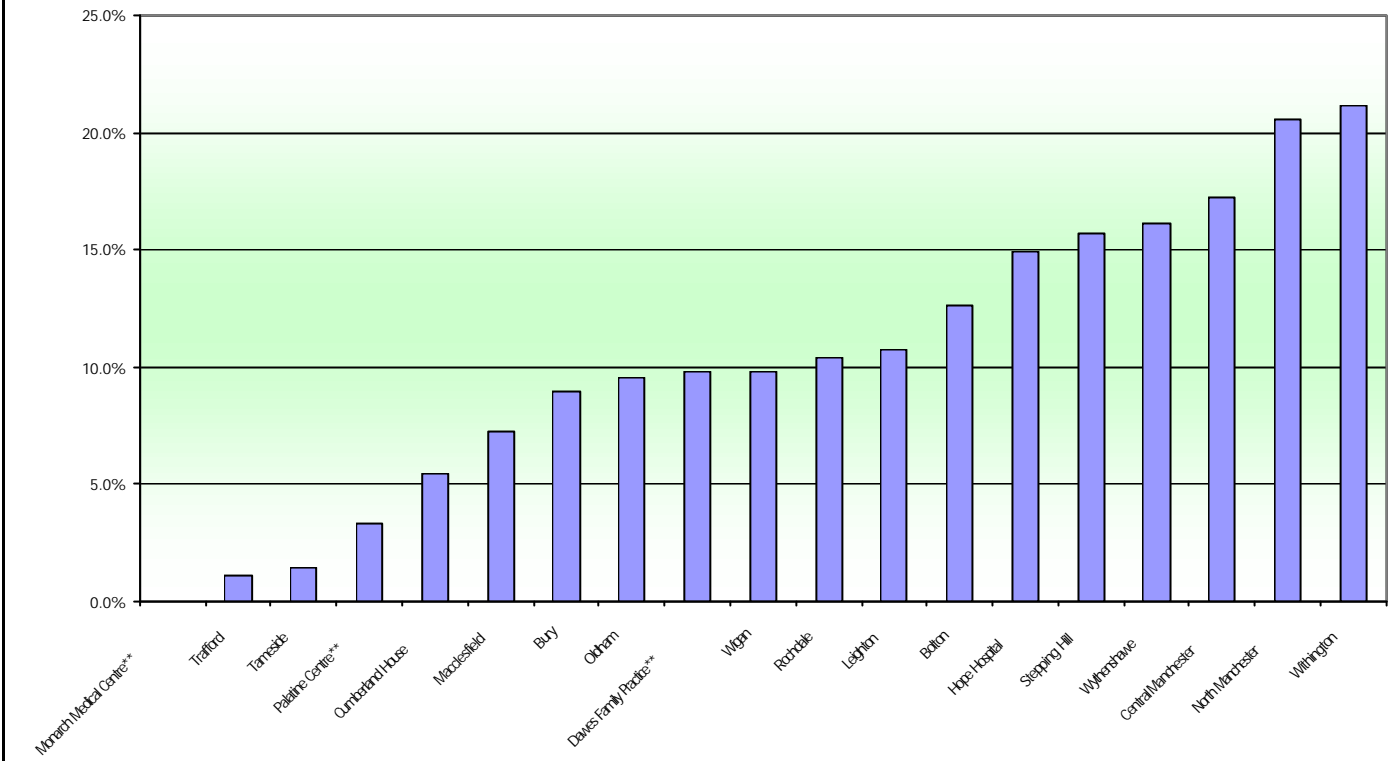


Percentage of all smears reported as possible invasive or glandular neoplasia seen within 2 weeks (standard 90%) for period Apr 05 - Mar 06
Merseyside & Cheshire Cancer Network

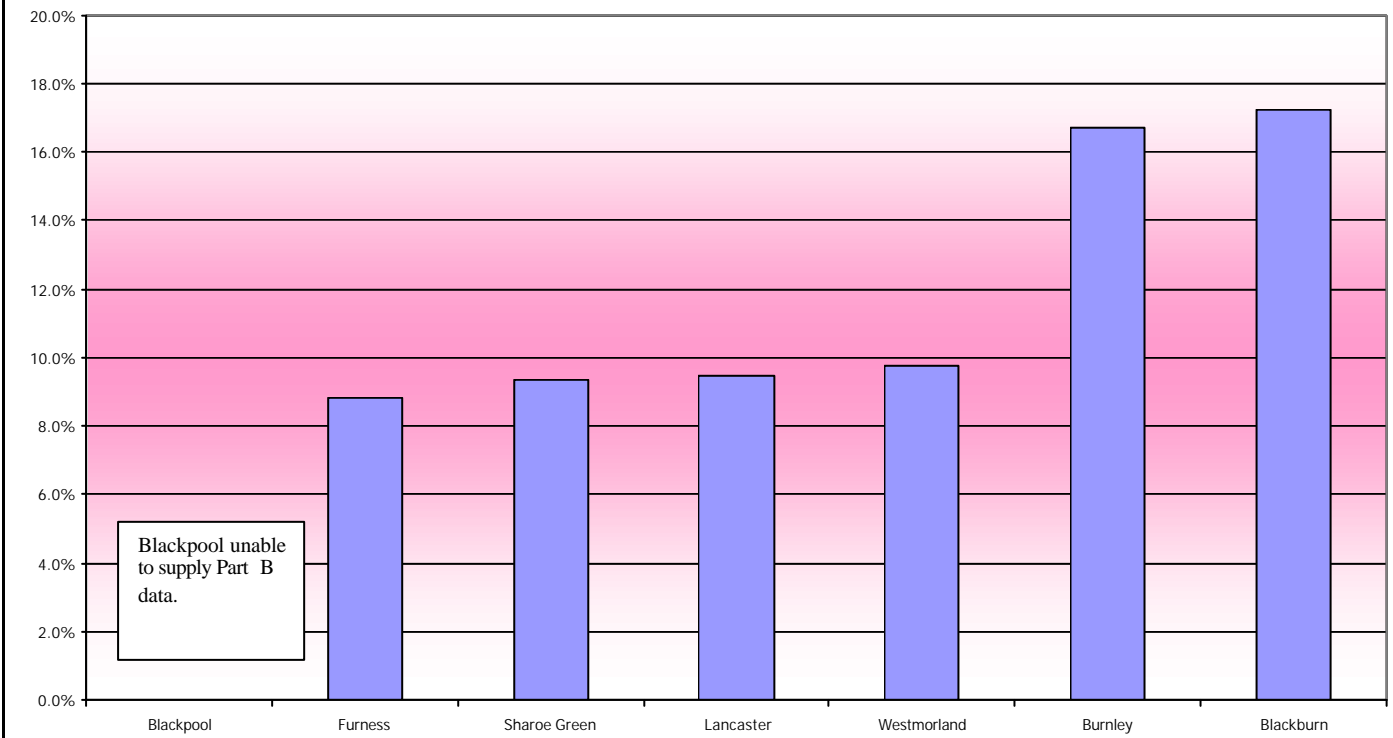


		DNA %
Colposcopy unit by Cancer Network		Apr 05 - Mar 06
Lancs & S Cumbria	Blackpool	not supplied
	Furness	8.8%
	Sharoe Green	9.3%
	Lancaster	9.5%
	Westmorland	9.8%
	Burnley	16.7%
	Blackburn	17.2%
Manchester & Cheshire	Monarch Medical Centre**	0.0%
	Trafford	1.1%
	Tameside	1.4%
	Palatine Centre**	3.3%
	Cumberland House	5.4%
	Macclesfield	7.3%
	Bury	9.0%
	Oldham	9.5%
	Dawes Family Practice**	9.8%
	Wigan	9.8%
	Rochdale	10.4%
	Leighton	10.7%
	Bolton	12.7%
	Hope Hospital	14.9%
	Stepping Hill	15.7%
	Wythenshawe	16.2%
	Central Manchester	17.3%
North Manchester	20.6%	
Withington	21.2%	
Merseyside & Cheshire	Warrington	1.3%
	Southport & Formby	5.4%
	Chester	10.6%
	Aintree	11.8%
	Southport & Ormskirk	12.4%
	Arrowe Park	14.2%
	LWH	14.7%
	Whiston	18.0%
	Liverpool	32.1%
	Northern	West Cumberland
Cumberland Infirmary		13.7%
NW Average		13.0%
** GP based practices		

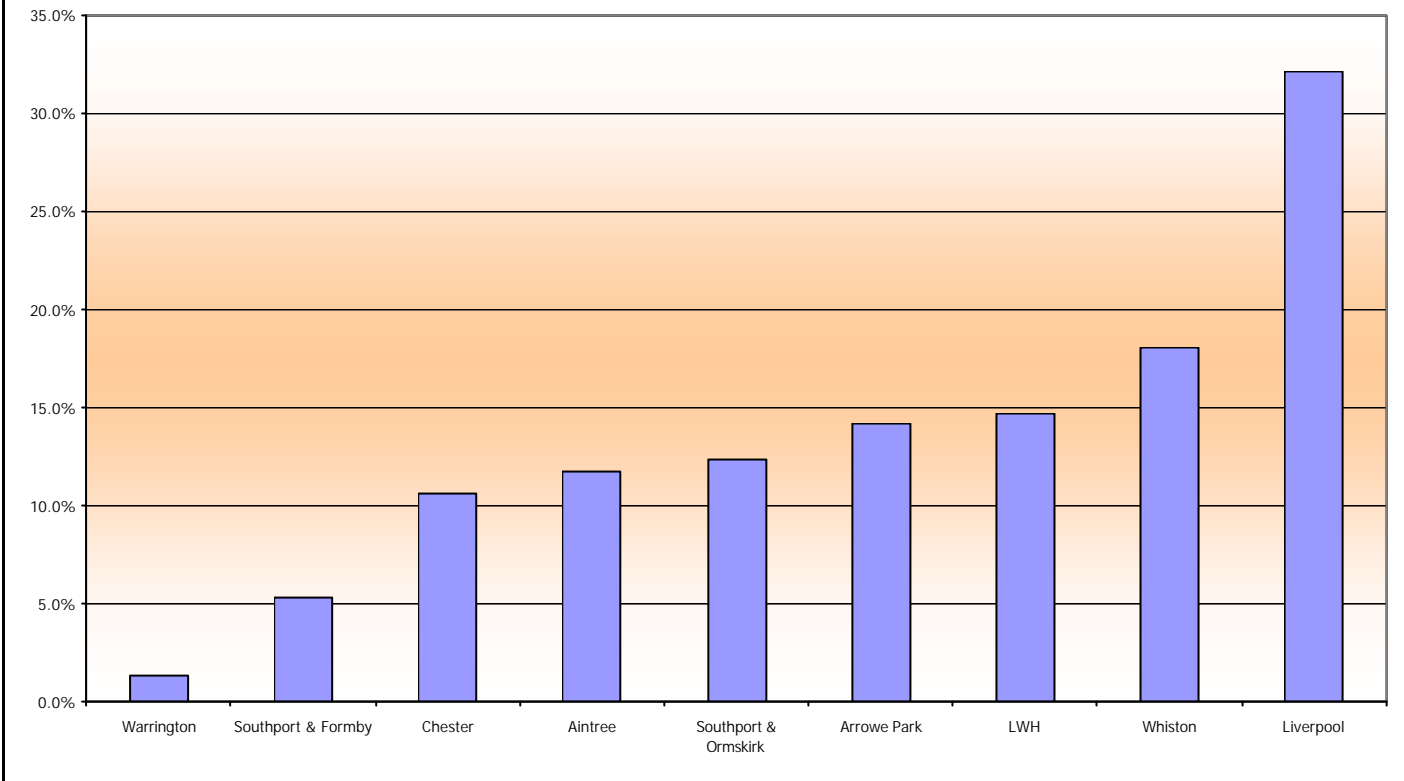
KC65 Part B - DNA % Apr 05 - Mar 06 (standard < 15%) Greater Manchester & Cheshire Cancer Network



KC65 Part B - DNA % Apr 05 - Mar 06 (standard < 15%) Lancashire & South Cumbria Cancer Network



KC65 Part B - DNA % Apr 05 - Mar 06 (standard < 15%) Merseyside & Cheshire Cancer Network



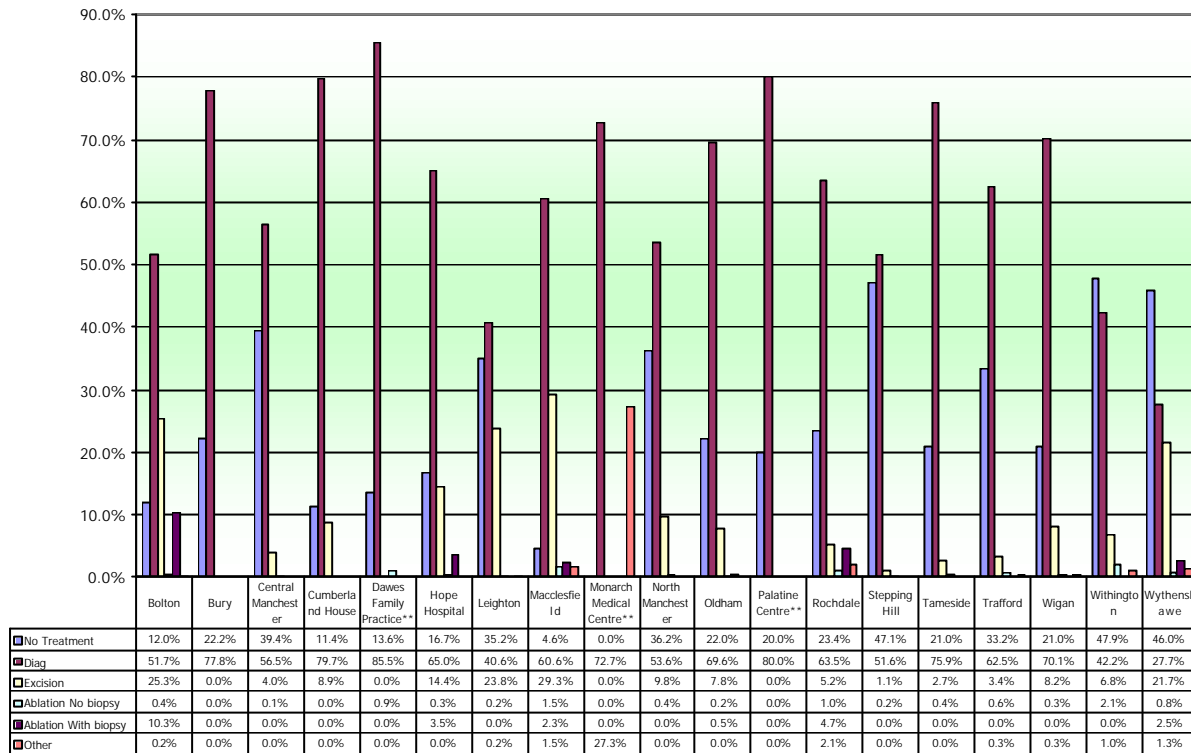
KC65 Part C1 First Attendance – type of procedure

Colposcopy unit by Cancer Network		No Treatment	Diag	Excision	Ablation No biopsy	Ablation With biopsy	Other
Lancs & S Cumbria	Blackburn	26.1%	71.2%	2.5%	0.0%	0.0%	0.1%
	Blackpool	34.2%	28.8%	25.2%	9.3%	0.2%	2.4%
	Burnley	48.9%	41.1%	7.1%	2.0%	0.8%	0.2%
	Furness	15.4%	83.8%	0.8%	0.0%	0.0%	0.0%
	Lancaster	49.3%	49.3%	1.3%	0.0%	0.0%	0.0%
	Sharoe Green	25.6%	60.9%	12.8%	0.5%	0.1%	0.1%
	Westmorland	39.3%	60.7%	0.0%	0.0%	0.0%	0.0%
Manchester & Cheshire	Bolton	12.0%	51.7%	25.3%	0.4%	10.3%	0.2%
	Bury	22.2%	77.8%	0.0%	0.0%	0.0%	0.0%
	Central Manchester	39.4%	56.5%	4.0%	0.1%	0.0%	0.0%
	Cumberland House	11.4%	79.7%	8.9%	0.0%	0.0%	0.0%
	Dawes Family Practice**	13.6%	85.5%	0.0%	0.9%	0.0%	0.0%
	Hope Hospital	16.7%	65.0%	14.4%	0.3%	3.5%	0.0%
	Leighton	35.2%	40.6%	23.8%	0.2%	0.0%	0.2%
	Macclesfield	4.6%	60.6%	29.3%	1.5%	2.3%	1.5%
	Monarch Medical Centre**	0.0%	72.7%	0.0%	0.0%	0.0%	27.3%
	North Manchester	36.2%	53.6%	9.8%	0.4%	0.0%	0.0%
	Oldham	22.0%	69.6%	7.8%	0.2%	0.5%	0.0%
	Palatine Centre**	20.0%	80.0%	0.0%	0.0%	0.0%	0.0%
	Rochdale	23.4%	63.5%	5.2%	1.0%	4.7%	2.1%
	Stepping Hill	47.1%	51.6%	1.1%	0.2%	0.0%	0.0%
	Tameside	21.0%	75.9%	2.7%	0.4%	0.0%	0.0%
	Trafford	33.2%	62.5%	3.4%	0.6%	0.0%	0.3%
Wigan	21.0%	70.1%	8.2%	0.3%	0.0%	0.3%	
Withington	47.9%	42.2%	6.8%	2.1%	0.0%	1.0%	
Wythenshawe	46.0%	27.7%	21.7%	0.8%	2.5%	1.3%	
Merseyside & Cheshire	Aintree	58.0%	25.4%	12.6%	2.6%	0.2%	1.3%
	Arrow Park	59.5%	23.0%	17.0%	0.3%	0.2%	0.0%
	Chester	28.2%	53.2%	18.0%	0.3%	0.4%	0.0%
	Liverpool	23.5%	42.1%	25.9%	0.0%	0.0%	8.5%
	LWH	65.6%	20.4%	9.8%	1.1%	0.5%	2.6%
	Southport & Formby	26.0%	71.4%	2.3%	0.3%	0.0%	0.0%
	Southport & Ormskirk	12.7%	84.8%	2.1%	0.0%	0.4%	0.0%
	Warrington	56.3%	34.0%	9.1%	0.2%	0.0%	0.4%
Whiston	34.8%	51.8%	7.9%	0.2%	0.0%	5.2%	
Northern	Cumberland Infirmary	16.6%	56.3%	26.1%	0.0%	0.0%	1.1%
	West Cumberland	25.3%	67.4%	7.2%	0.0%	0.0%	0.0%

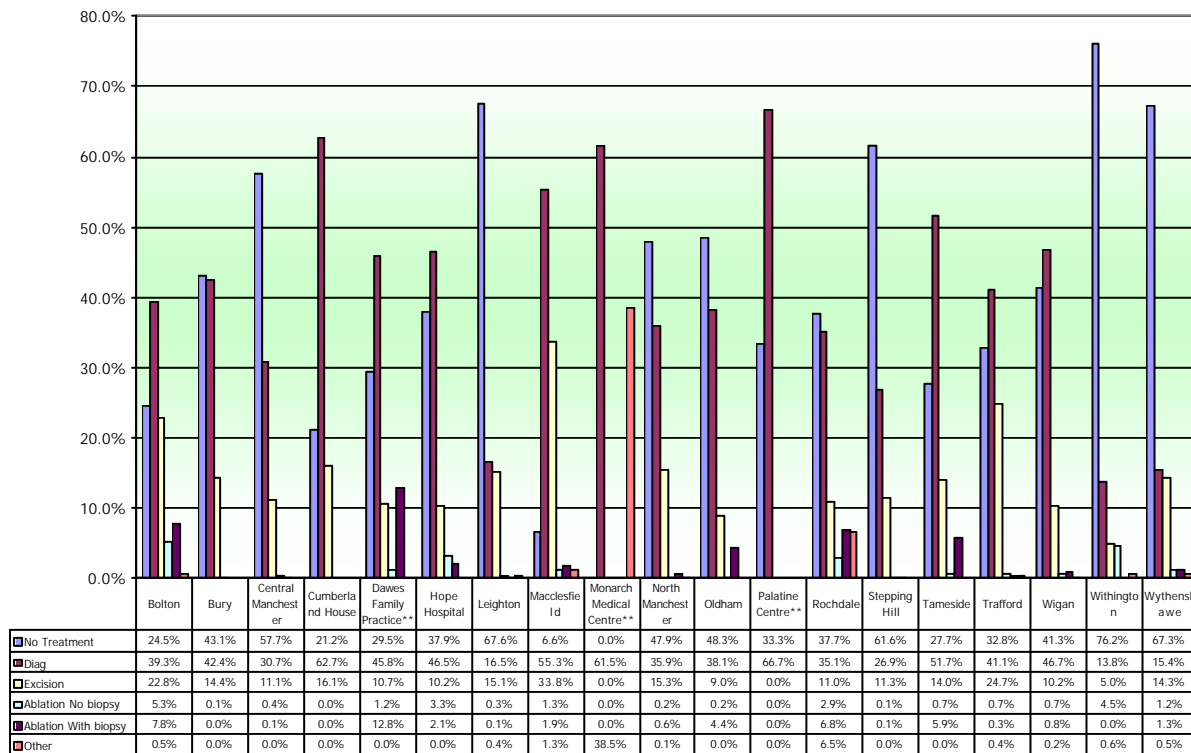
KC65 Part C2 All Attendance – type of procedure

Colposcopy unit by Cancer Network		No Treatment	Diag	Excision	Ablation No biopsy	Ablation With biopsy	Other
Lancs & S Cumbria	Blackburn	40.1%	39.8%	19.9%	0.0%	0.1%	0.1%
	Blackpool	70.0%	8.9%	13.1%	5.5%	1.9%	0.5%
	Burnley	62.9%	21.9%	6.6%	2.3%	6.1%	0.3%
	Furness	40.4%	43.2%	15.8%	0.0%	0.6%	0.0%
	Lancaster	60.9%	24.5%	14.4%	0.0%	0.2%	0.0%
	Sharoe Green	47.4%	34.9%	12.2%	0.6%	4.8%	0.1%
	Westmorland	61.3%	25.3%	13.2%	0.0%	0.2%	0.0%
Manchester & Cheshire	Bolton	24.5%	39.3%	22.8%	5.3%	7.8%	0.5%
	Bury	43.1%	42.4%	14.4%	0.1%	0.0%	0.0%
	Central Manchester	57.7%	30.7%	11.1%	0.4%	0.1%	0.0%
	Cumberland House	21.2%	62.7%	16.1%	0.0%	0.0%	0.0%
	Dawes Family Practice**	29.5%	45.8%	10.7%	1.2%	12.8%	0.0%
	Hope Hospital	37.9%	46.5%	10.2%	3.3%	2.1%	0.0%
	Leighton	67.6%	16.5%	15.1%	0.3%	0.1%	0.4%
	Macclesfield	6.6%	55.3%	33.8%	1.3%	1.9%	1.3%
	Monarch Medical Centre**	0.0%	61.5%	0.0%	0.0%	0.0%	38.5%
	North Manchester	47.9%	35.9%	15.3%	0.2%	0.6%	0.1%
	Oldham	48.3%	38.1%	9.0%	0.2%	4.4%	0.0%
	Palatine Centre**	33.3%	66.7%	0.0%	0.0%	0.0%	0.0%
	Rochdale	37.7%	35.1%	11.0%	2.9%	6.8%	6.5%
	Stepping Hill	61.6%	26.9%	11.3%	0.1%	0.1%	0.0%
	Tameside	27.7%	51.7%	14.0%	0.7%	5.9%	0.0%
	Trafford	32.8%	41.1%	24.7%	0.7%	0.3%	0.4%
Wigan	41.3%	46.7%	10.2%	0.7%	0.8%	0.2%	
Withington	76.2%	13.8%	5.0%	4.5%	0.0%	0.6%	
Wythenshawe	67.3%	15.4%	14.3%	1.2%	1.3%	0.5%	
Merseyside & Cheshire	Aintree	64.2%	15.8%	11.9%	1.8%	5.5%	0.7%
	Arrowe Park	73.1%	13.1%	13.1%	0.5%	0.1%	0.1%
	Chester	45.2%	33.4%	19.6%	1.3%	0.6%	0.0%
	Liverpool	25.9%	32.8%	21.7%	0.0%	0.0%	19.5%
	LWH	77.4%	10.0%	7.9%	1.2%	2.2%	1.3%
	Southport & Formby	51.1%	32.2%	12.5%	1.6%	2.6%	0.0%
	Southport & Ormskirk	39.9%	40.9%	9.7%	2.3%	7.1%	0.0%
	Warrington	59.5%	22.9%	15.9%	0.5%	0.2%	1.0%
Whiston	61.1%	26.6%	6.5%	0.8%	2.8%	2.3%	
Northern	Cumberland Infirmary	44.5%	35.7%	19.1%	0.0%	0.0%	0.7%
	West Cumberland	24.7%	55.6%	7.1%	0.0%	12.6%	0.0%

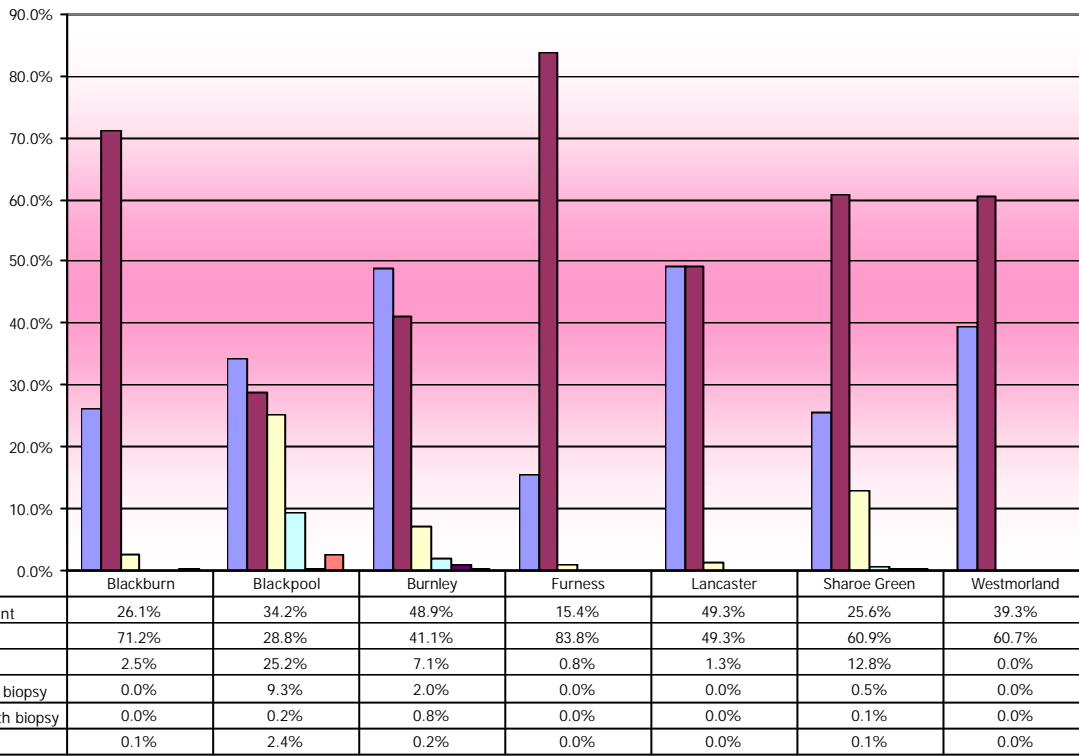
KC65 Part C1 - First attendance - Type of procedure (%) 2005-2006 Greater Manchester & Cheshire Cancer Network



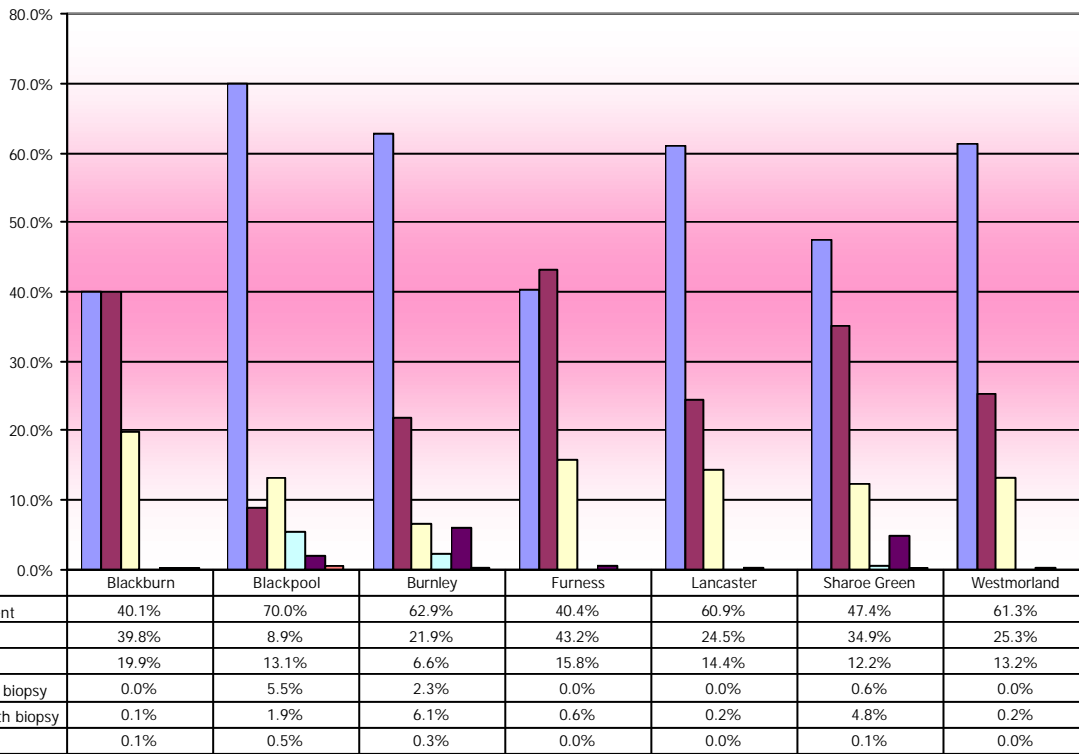
KC65 Part C2 - All attendance - Type of procedure (%) 2005-2006 Greater Manchester & Cheshire Cancer Network



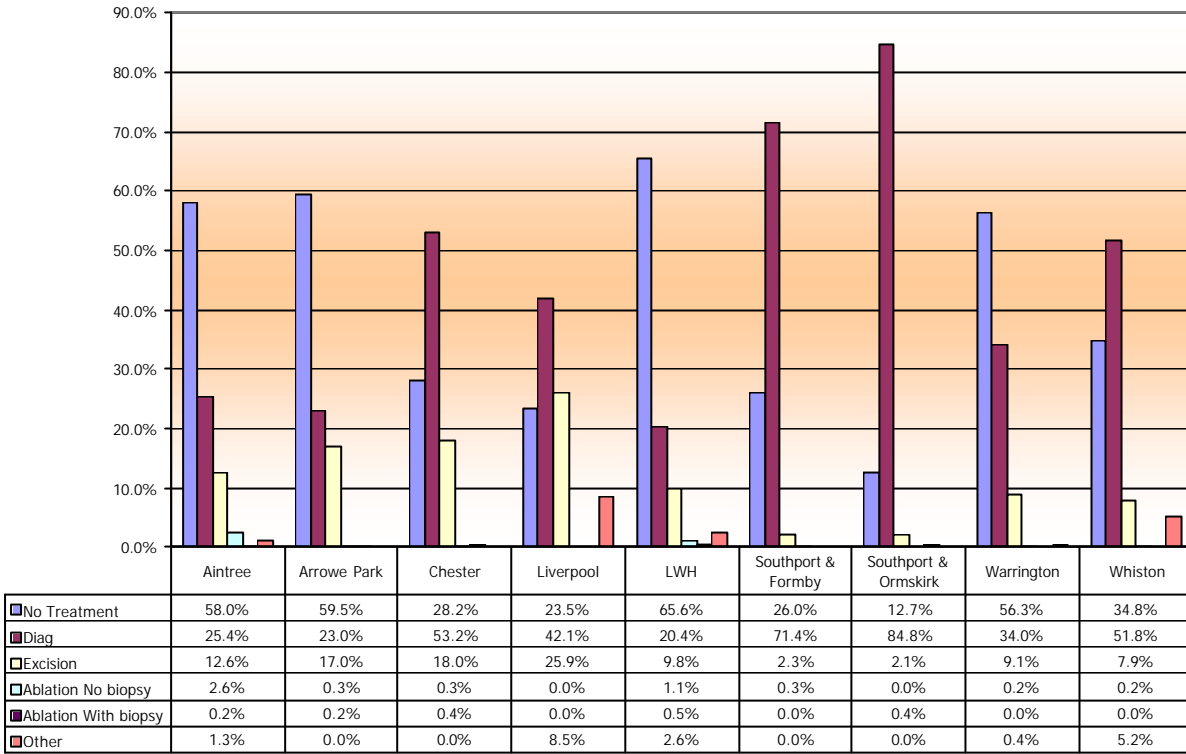
KC65 Part C1 - First attendance - Type of procedure (%) 2005-2006 Lancashire & South Cumbria Cancer Network



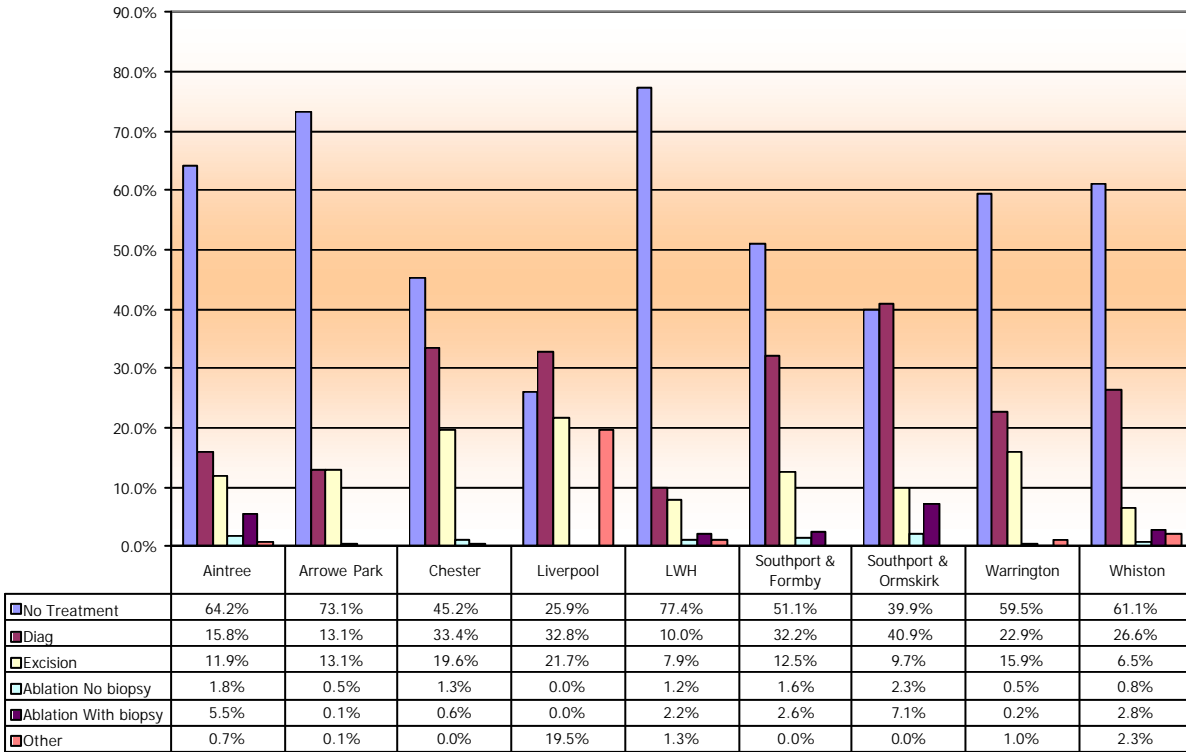
KC65 Part C2 - All attendance - Type of procedure (%) 2005-2006 Lancashire & South Cumbria Cancer Network



KC65 Part C1 - First attendance - Type of procedure (%) 2005-2006 Merseyside & Cheshire Cancer Network



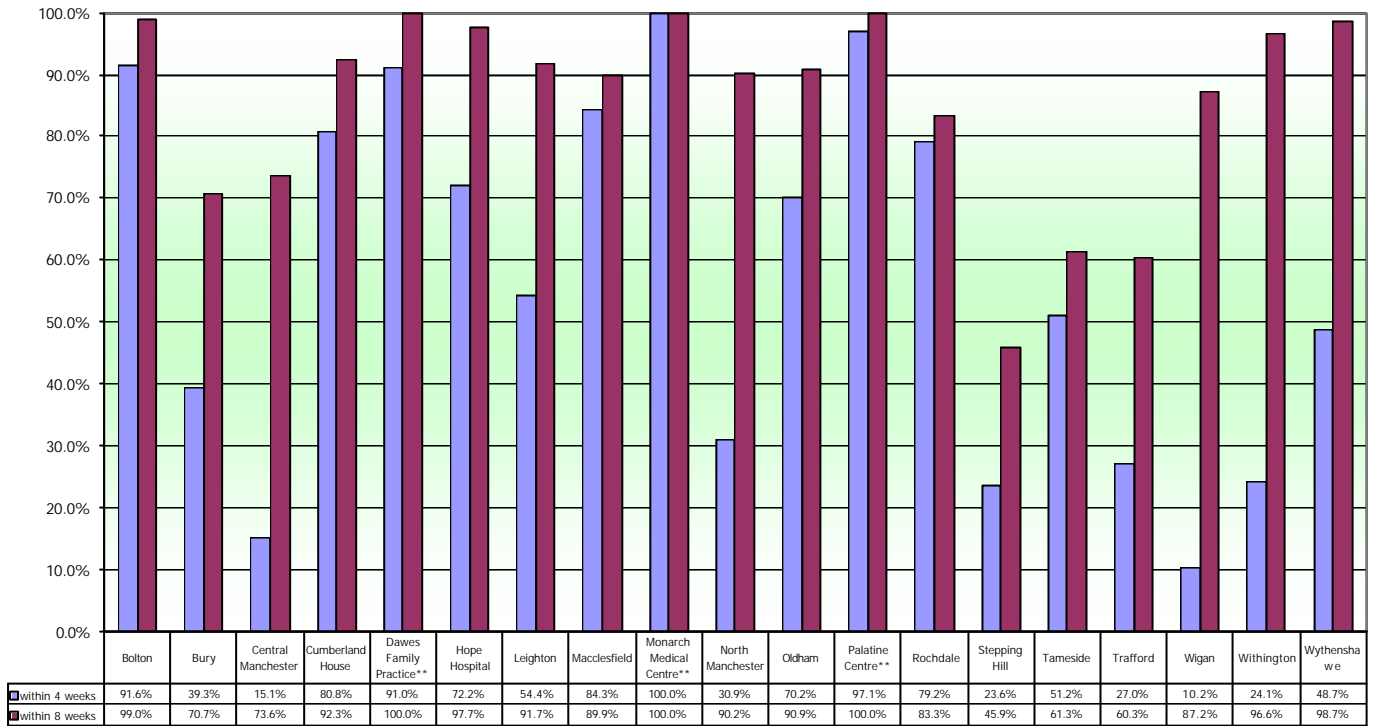
KC65 Part C2 - All attendance - Type of procedure (%) 2005-2006 Merseyside & Cheshire Cancer Network



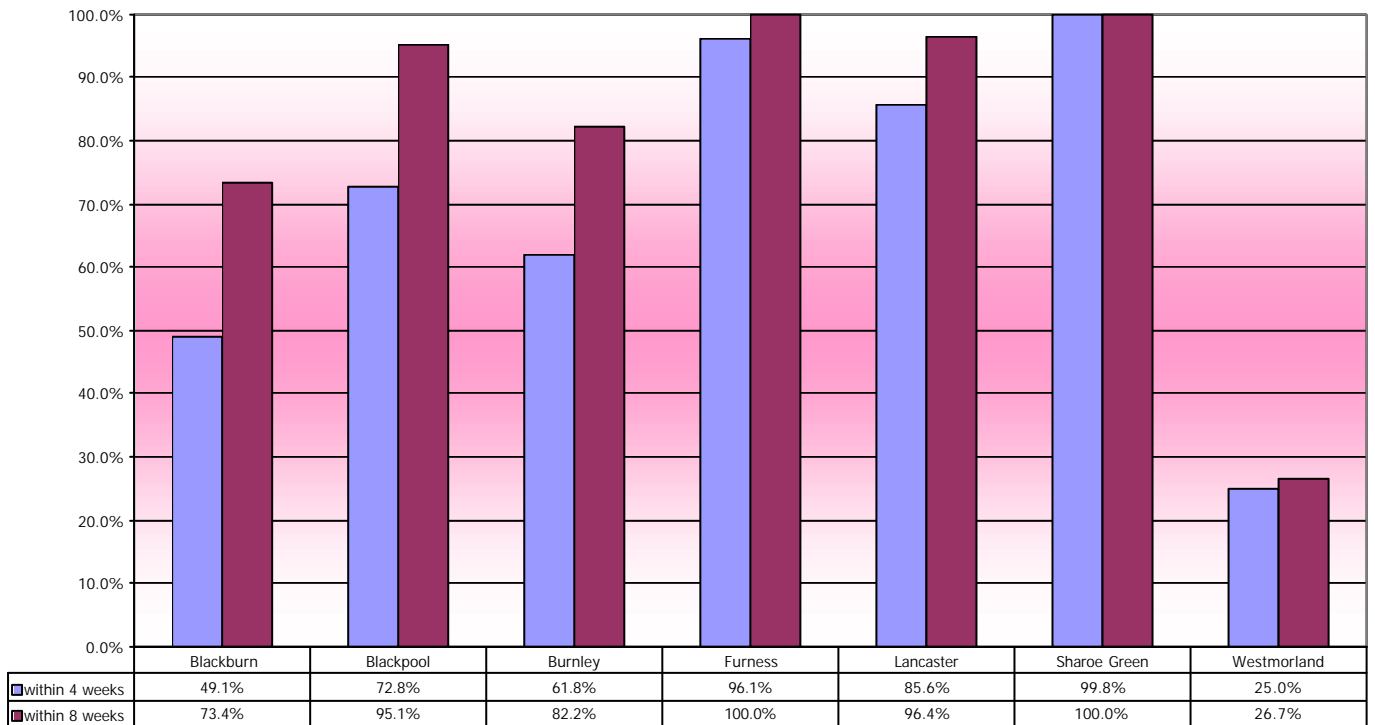
KC65 Part D Time from biopsy to informing patient (1st month of each quarter). Best practice 90% within 4 weeks. Standard 100% within 8 weeks.

Colposcopy unit by Cancer Network		within 4 weeks	within 8 weeks
Lancs & S Cumbria	Blackburn	49.1%	73.4%
	Blackpool	72.8%	95.1%
	Burnley	61.8%	82.2%
	Furness	96.1%	100.0%
	Lancaster	85.6%	96.4%
	Sharoe Green	99.8%	100.0%
	Westmorland	25.0%	26.7%
Manchester & Cheshire	Bolton	91.6%	99.0%
	Bury	39.3%	70.7%
	Central Manchester	15.1%	73.6%
	Cumberland House	80.8%	92.3%
	Dawes Family Practice**	91.0%	100.0%
	Hope Hospital	72.2%	97.7%
	Leighton	54.4%	91.7%
	Macclesfield	84.3%	89.9%
	Monarch Medical Centre**	100.0%	100.0%
	North Manchester	30.9%	90.2%
	Oldham	70.2%	90.9%
	Palatine Centre**	97.1%	100.0%
	Rochdale	79.2%	83.3%
	Stepping Hill	23.6%	45.9%
	Tameside	51.2%	61.3%
	Trafford	27.0%	60.3%
	Wigan	10.2%	87.2%
Withington	24.1%	96.6%	
Wythenshawe	48.7%	98.7%	
Merseyside & Cheshire	Aintree	98.2%	99.5%
	Arroe Park	63.8%	92.3%
	Chester	99.6%	100.0%
	Liverpool	52.7%	91.6%
	LWH	67.2%	95.8%
	Southport & Formby	92.8%	100.0%
	Southport & Ormskirk	93.9%	99.0%
	Warrington	80.0%	96.1%
Whiston	47.5%	89.1%	
Northern	Cumberland Infirmary	53.8%	82.8%
	West Cumberland	86.8%	100.0%

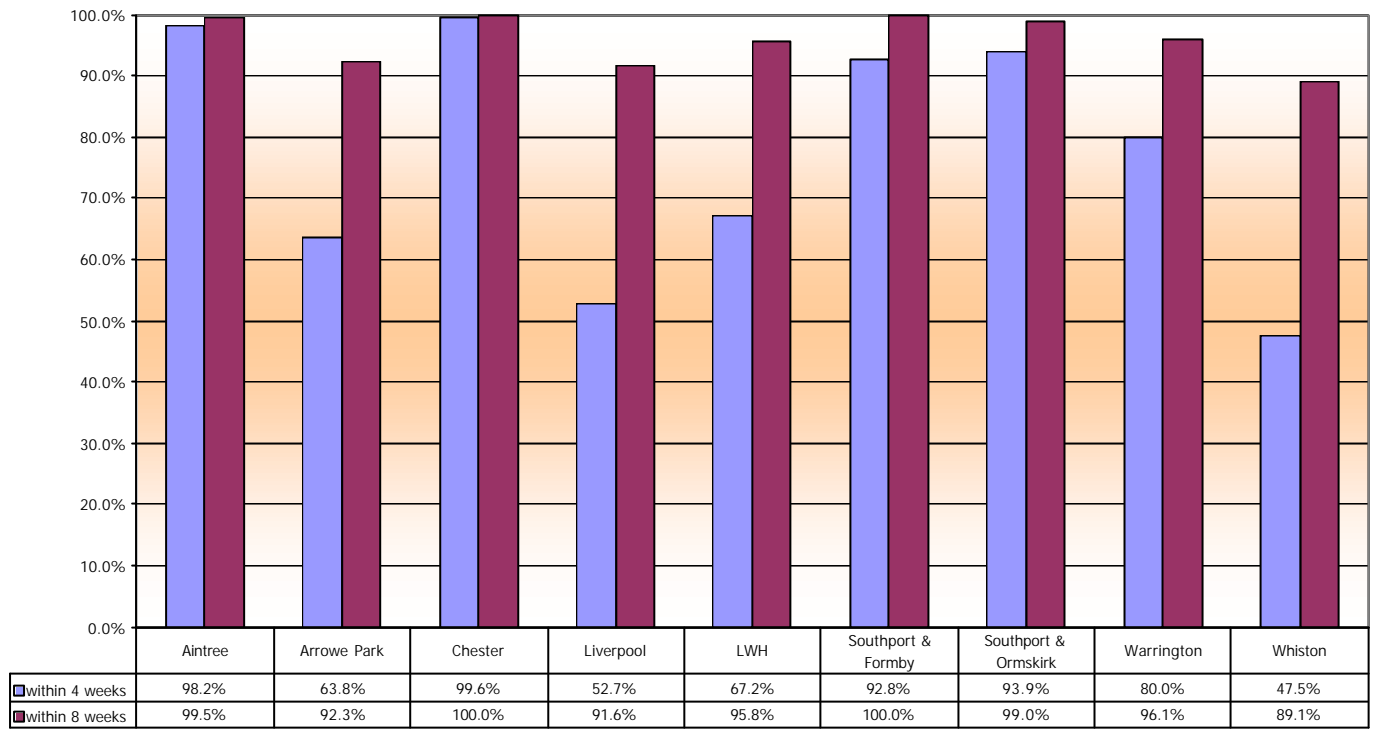
KC65 Part D - Time from biopsy to informing patient (1st month of each quarter) Best practice 90% within 4 weeks, Standard 100% within 8 weeks Greater Manchester & Cheshire Cancer Network



KC65 Part D - Time from biopsy to informing patient (1st month of each quarter) Best practice 90% within 4 weeks, Standard 100% within 8 weeks Lancashire & South Cumbria Cancer Network



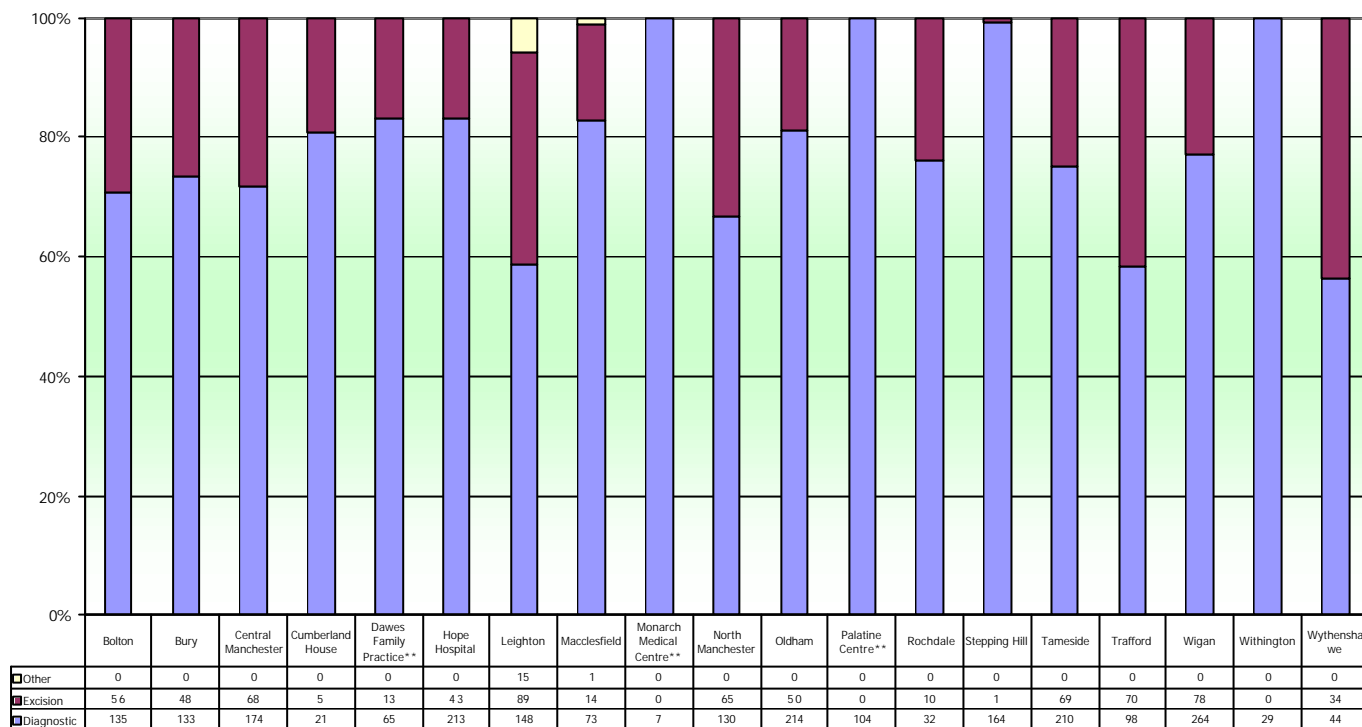
KC65 Part D - Time from biopsy to informing patient (1st month of each quarter) Best practice 90% within 4 weeks, Standard 100% within 8 weeks Merseyside & Cheshire Cancer Network



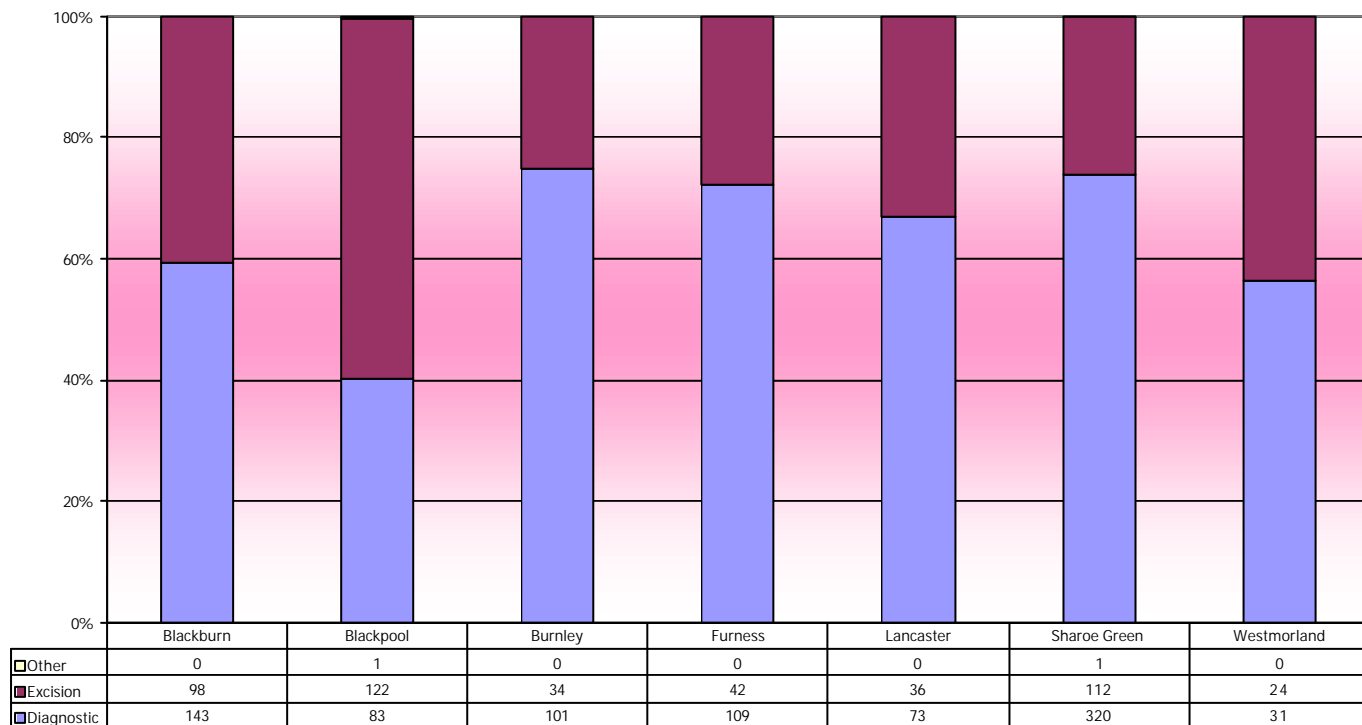
KC65 Part E All outcomes by biopsy time 1st month of each quarter

Colposcopy unit by Cancer Network		Diagnostic	Excision	Other
Lancs & S Cumbria	Blackburn	143	98	0
	Blackpool	83	122	1
	Burnley	101	34	0
	Furness	109	42	0
	Lancaster	73	36	0
	Sharoe Green	320	112	1
	Westmorland	31	24	0
Manchester & Cheshire	Bolton	135	56	0
	Bury	133	48	0
	Central Manchester	174	68	0
	Cumberland House	21	5	0
	Dawes Family Practice**	65	13	0
	Hope Hospital	213	43	0
	Leighton	148	89	15
	Macclesfield	73	14	1
	Monarch Medical Centre**	7	0	0
	North Manchester	130	65	0
	Oldham	214	50	0
	Palatine Centre**	104	0	0
	Rochdale	32	10	0
	Stepping Hill	164	1	0
	Tameside	210	69	0
	Trafford	98	70	0
	Wigan	264	78	0
Withington	29	0	0	
Wythenshawe	44	34	0	
Merseyside & Cheshire	Aintree	112	103	2
	Arrowe Park	93	113	0
	Chester	167	98	3
	Liverpool	111	47	0
	LWH	127	106	8
	Southport & Formby	63	17	0
	Southport & Ormskirk	81	18	0
	Warrington	206	147	1
	Whiston	291	76	8
North ern	Cumberland Infirmary	105	57	1
	West Cumberland	48	5	0

KC65 Part E All outcomes by biopsy type 1st month of each quarter
Greater Manchester & Cheshire Cancer Network



KC65 Part E All outcomes by biopsy type 1st month of each quarter
Lancashire & South Cumbria Cancer Network



**KC65 Part E All outcomes by biopsy type 1st month of each quarter
Merseyside & Cheshire Cancer Network**

