



INFORMATION SUMMARY
BY CANCER NETWORK
JANUARY 2008

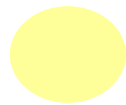
Produced by
North West Cervical Screening
Quality Assurance Reference Centre
Liverpool Women's Hospital
Crown Street Liverpool L8 7SS
www.nwcsqarc.org.uk



CANCER NETWORK KEY



Northern Cancer Network



Lancashire & South Cumbria Cancer Network



Greater Manchester & Cheshire Cancer Network



Merseyside & Cheshire Cancer Network

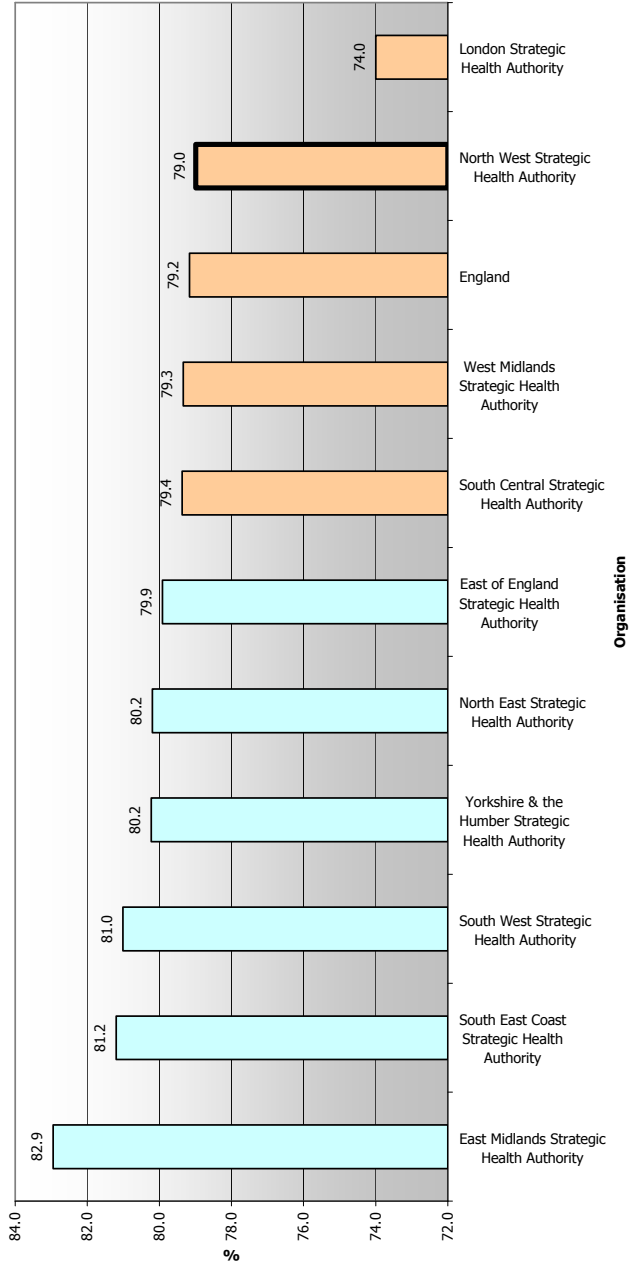
Cervical Screening Programme: coverage of the Target Age Group (25-64) by Primary Care Organisation, 2003-04 to 2006-07.

Cancer Network	KC53 Data for Target Screening Age 25-64 (ranked in order of coverage for 2006-2007)	Coverage 2006-2007	Coverage 2005-2006	Coverage 2004-2005	Coverage 2003-2004
Greater Manchester & Cheshire	Central & Eastern Cheshire	83.2	83.6		
Greater Manchester & Cheshire	Bury	82.0	82.4	82.9	82.5
Greater Manchester & Cheshire	Stockport	81.3	81.5	81.8	82.1
Greater Manchester & Cheshire	Trafford	80.8	80.9		
Greater Manchester & Cheshire	Ashton, Leigh and Wigan	80.7	81.1	80.6	80.9
Greater Manchester & Cheshire	Bolton	80.6	81.1	81.2	82.3
Greater Manchester & Cheshire	Tameside and Glossop	80.3	81.1	82.1	82.4
Greater Manchester & Cheshire	Oldham	80.2	80.7	81.0	82.3
Greater Manchester & Cheshire	Heywood, Middleton & Rochdale	79.3	80.0		
Greater Manchester & Cheshire	Salford	77.9	78.3	78.8	78.7
Greater Manchester & Cheshire	Manchester	74.0	74.4		
Greater Manchester & Cheshire	Eastern Cheshire		84.2	84.9	85.3
Greater Manchester & Cheshire	Trafford South		83.2	83.1	82.8
Greater Manchester & Cheshire	Central Cheshire		83.2	83.7	84.3
Greater Manchester & Cheshire	Heywood and Middleton		80.9	81.3	80.7
Greater Manchester & Cheshire	Rochdale		79.5	81.0	81.3
Greater Manchester & Cheshire	Trafford North		77.6	79.2	79.5
Greater Manchester & Cheshire	South Manchester		76.5	76.4	77.2
Greater Manchester & Cheshire	North Manchester		74.5	75.1	76.3
Greater Manchester & Cheshire	Central Manchester		72.5	71.3	71.0
Lancashire & South Cumbria	East Lancashire	80.0			
Lancashire & South Cumbria	Central Lancashire	79.6			
Lancashire & South Cumbria	North Lancashire	79.2			
Lancashire & South Cumbria	Blackburn With Darwen	77.3	77.9	80.2	80.7
Lancashire & South Cumbria	Blackpool	75.0	75.3	76.7	78.4
Lancashire & South Cumbria	Eden Valley		85.8	85.5	86.0
Lancashire & South Cumbria	Wyre		82.0	82.3	82.9
Lancashire & South Cumbria	Chorley and South Ribble		82.0	82.9	84.1
Lancashire & South Cumbria	Fylde		80.4	81.9	82.7
Lancashire & South Cumbria	Burnley, Pendle and Rossendale		80.4	81.9	82.8
Lancashire & South Cumbria	West Lancashire		80.0	81.5	81.7
Lancashire & South Cumbria	Hyndburn and Ribble Valley		79.9	81.9	83.0
Lancashire & South Cumbria	Morecambe Bay		78.7	78.7	79.8
Lancashire & South Cumbria	Preston		77.3	78.1	80.3
Merseyside & Cheshire	Warrington	82.9	82.8	82.9	83.0
Merseyside & Cheshire	Western Cheshire	81.6	81.8		
Merseyside & Cheshire	Halton & St Helens	79.4	79.5		
Merseyside & Cheshire	Wirral	77.9	78.3		
Merseyside & Cheshire	Knowsley	74.5	74.8	75.3	75.6
Merseyside & Cheshire	Sefton	74.4	74.6		
Merseyside & Cheshire	Liverpool	72.3	72.8		
Merseyside & Cheshire	Cheshire West		82.2	83.3	84.0
Merseyside & Cheshire	Bebington and West Wirral		82.2	83.3	83.0
Merseyside & Cheshire	Ellesmere Port and Neston		81.1	81.7	82.6
Merseyside & Cheshire	St Helens		80.7	80.4	80.6
Merseyside & Cheshire	Halton		77.6	77.2	78.2
Merseyside & Cheshire	Birkenhead and Wallasey		76.4	78.4	78.2
Merseyside & Cheshire	Southport and Formby		76.3	77.2	77.9
Merseyside & Cheshire	North Liverpool		73.9	75.4	76.1
Merseyside & Cheshire	South Sefton		73.3	75.1	76.4
Merseyside & Cheshire	South Liverpool		73.3	74.6	75.8
Merseyside & Cheshire	Central Liverpool		72.1	73.5	73.9
Northern	Cumbria	82.0			
Northern	Carlisle and District		82.7	83.3	84.2
Northern	West Cumbria		82.7	82.1	82.6

Source Cervical Screening Programme, England:2006-07 Bulletin: 2007/14/HSCIC Table 13 © 2007, The Information Centre

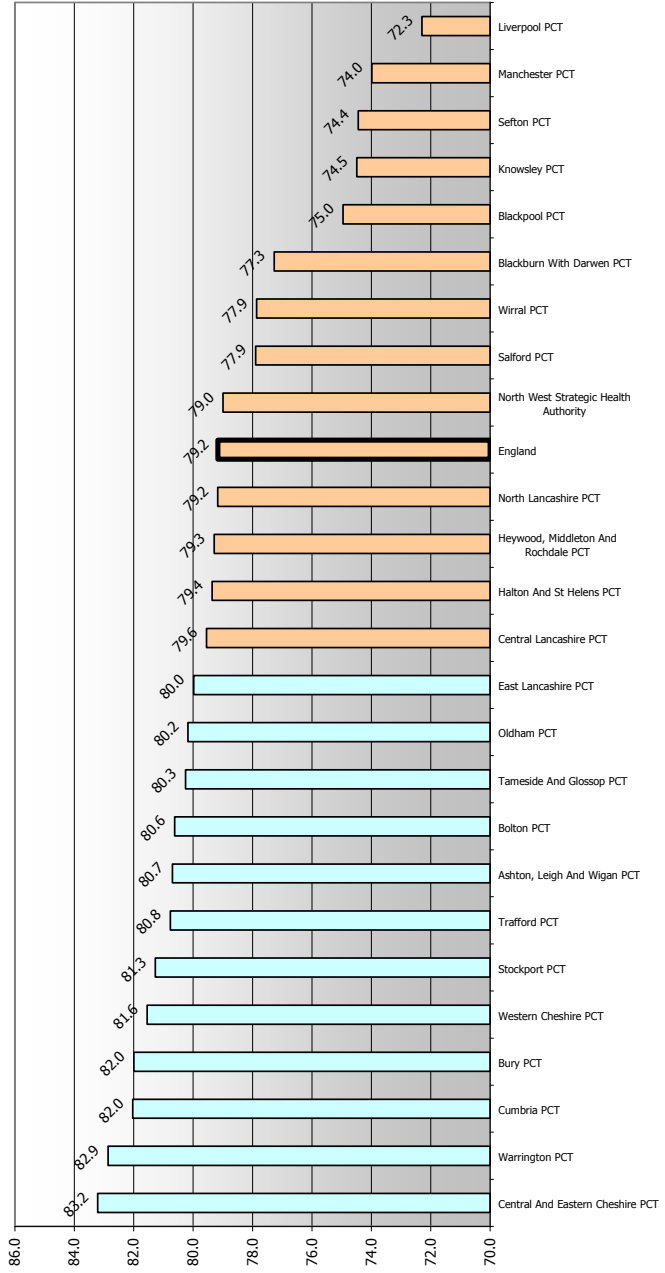
Cervical screening programme: coverage (less than 5 years since last adequate test) of the Target Age Group (25-64) by SHA
2006-07

Sources: KC53 Parts A2 and A3; Cervical Screening Programme 2006-07 The Information Centre

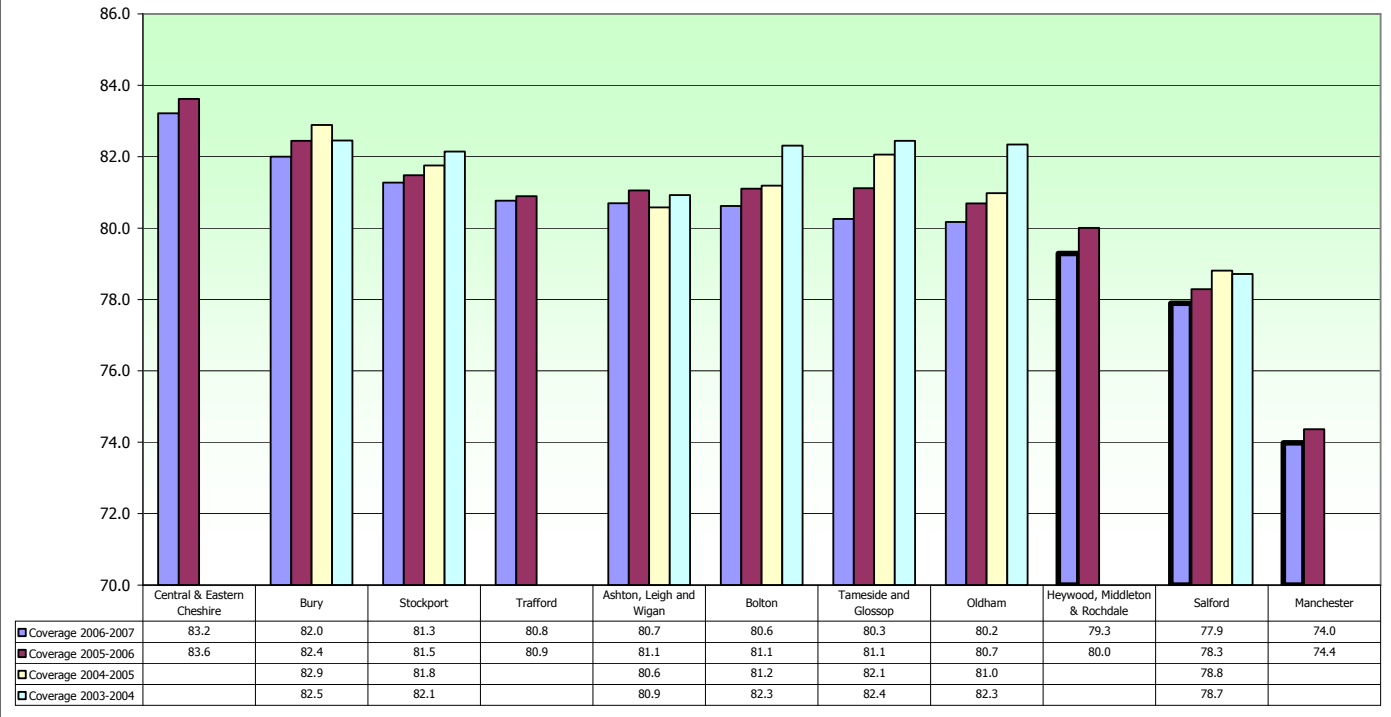


Cervical screening programme: coverage (less than 5 years since last adequate test) of the Target Age Group (25-64) by PCT
2006-07

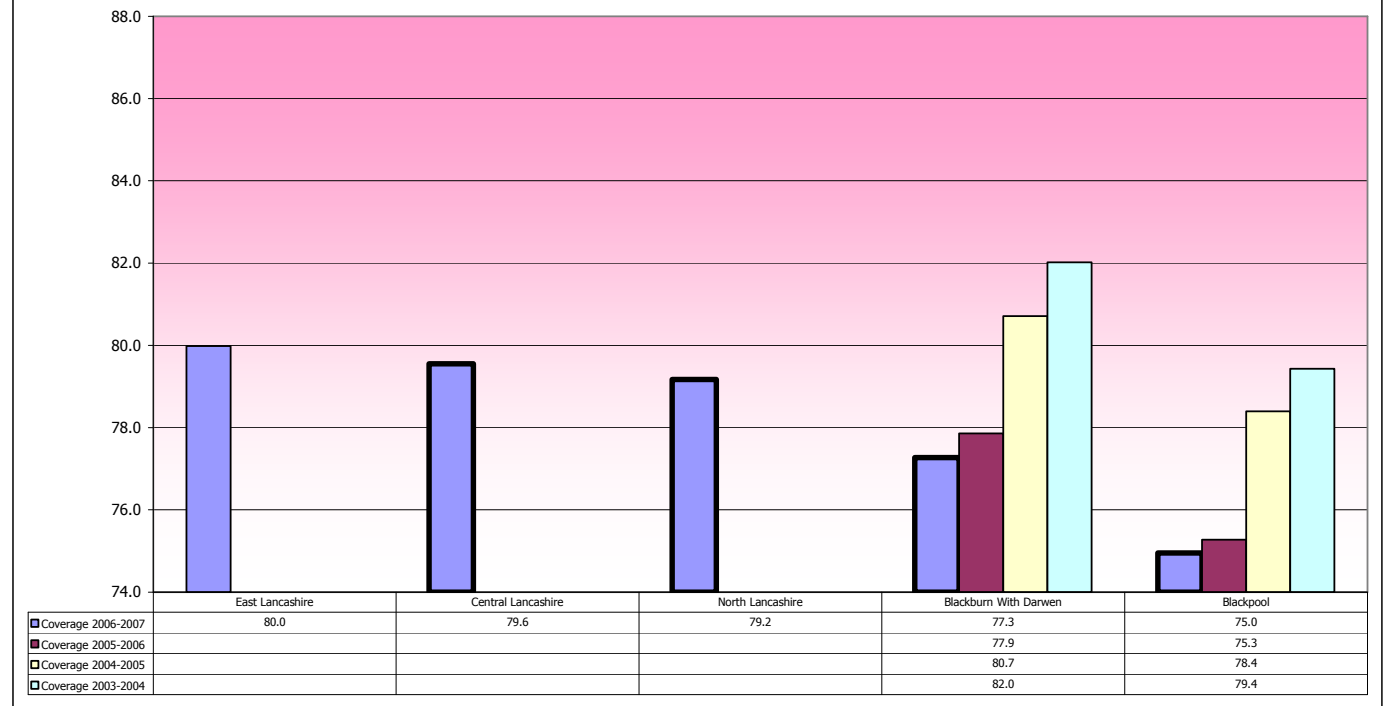
Sources: KC53 Parts A2 and A3; Cervical Screening Programme 2006-07 The Information Centre



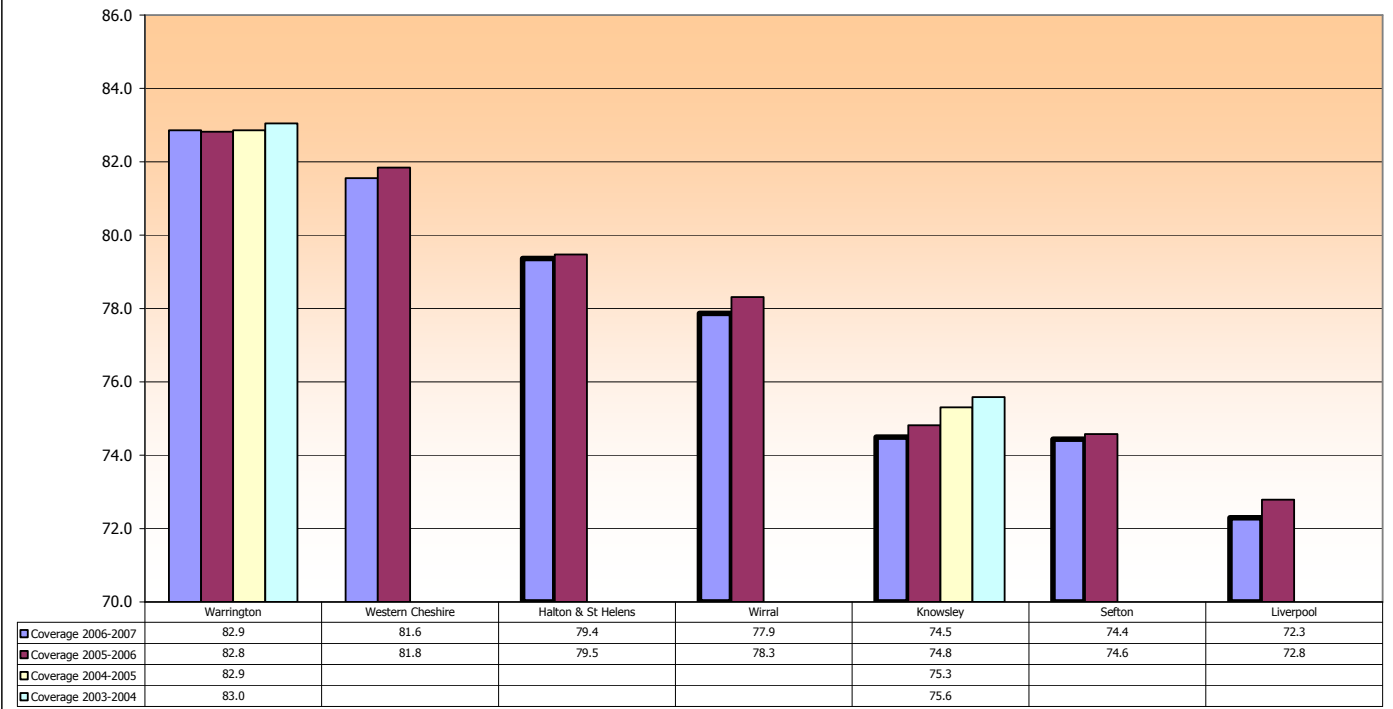
% Coverage (less than 5 years since adequate test) for the period 2003-2007 for target group 25-64 for Greater Manchester & Cheshire Cancer Network. Target 80%.



% Coverage (less than 5 years since adequate test) for the period 2003-2007 for target group 25-64 for Lancashire & South Cumbria Cancer Network. Target 80%.



% Coverage (less than 5 years since adequate test) for the period 2003-2007 for target group 25-64 for Merseyside & Cheshire Cancer Network. Target 80%.



Measuring laboratory performance in the North West

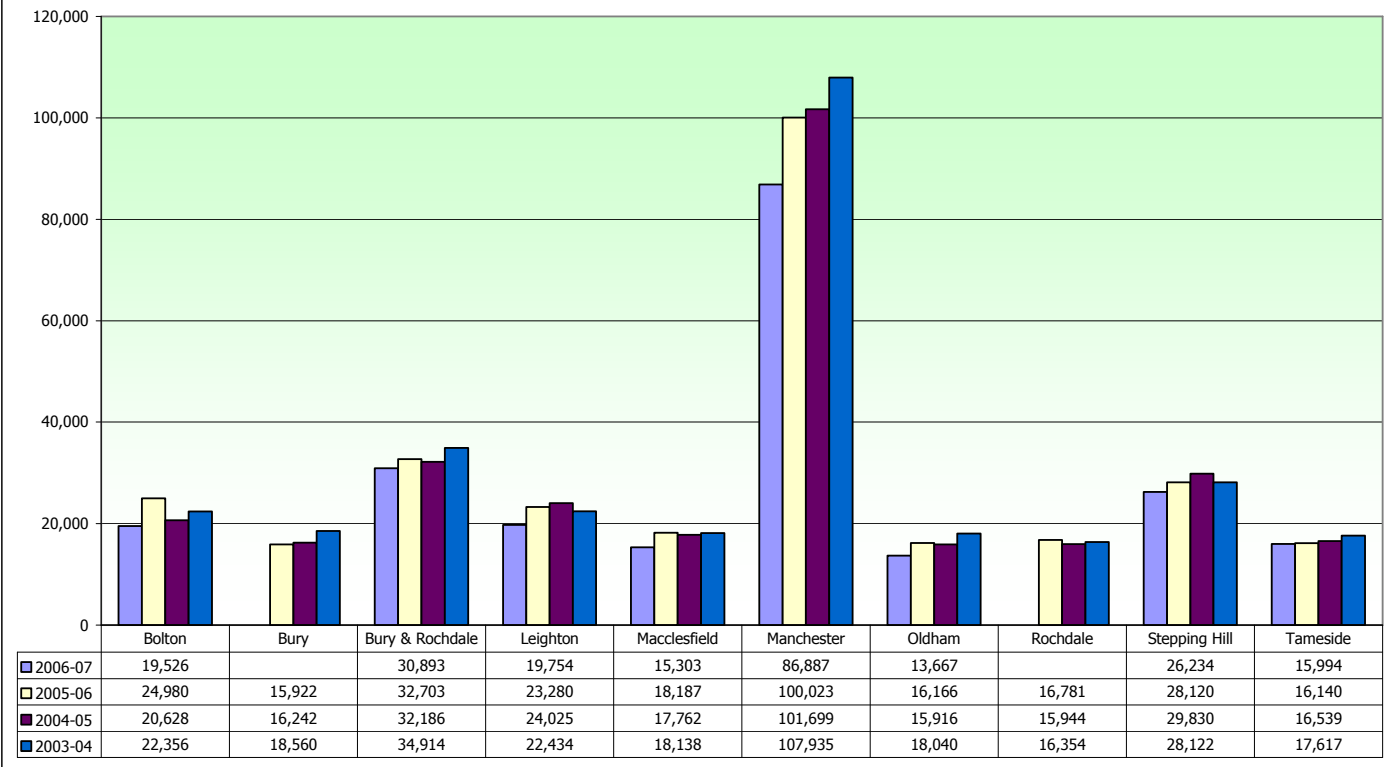
2003-04 to 2006-07

Workload

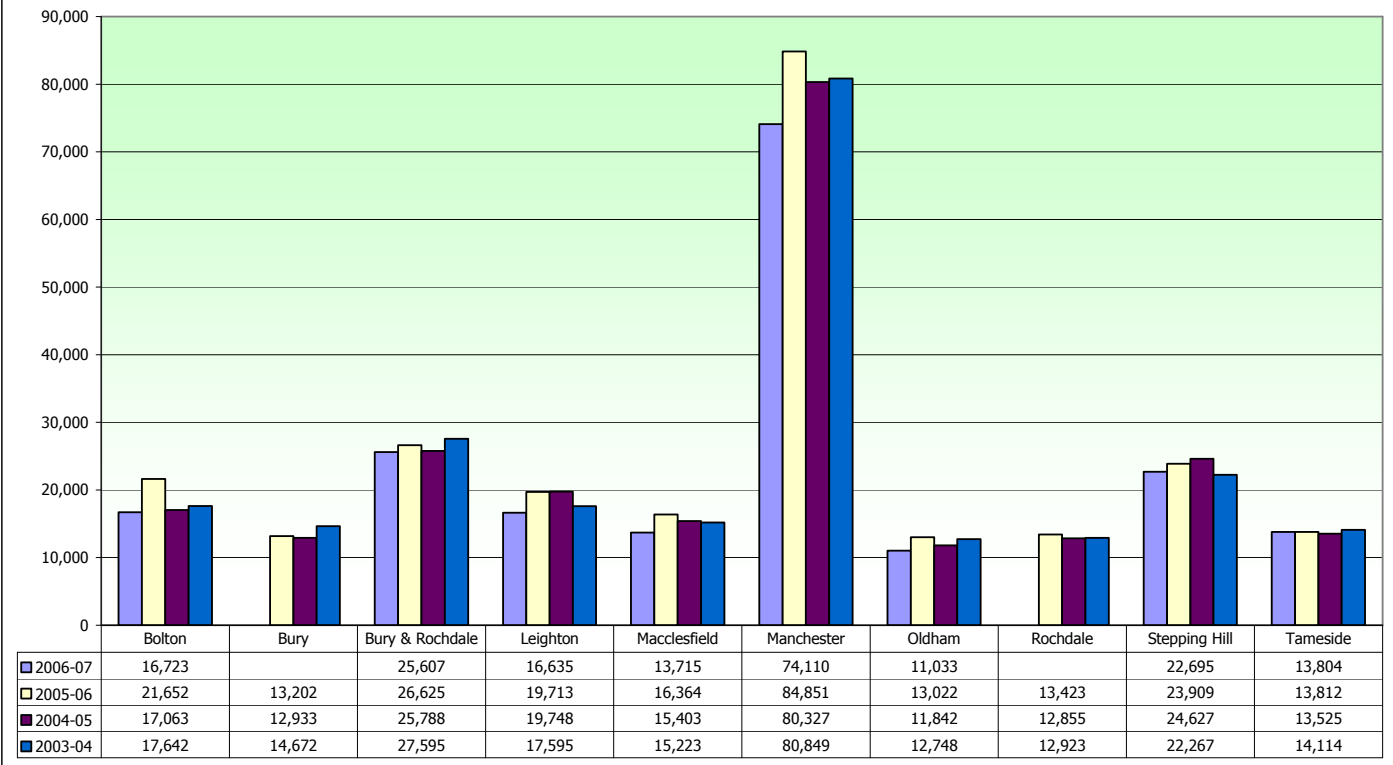
Laboratory by Cancer Network		Workload - Smears examined							
		2006-07		2005-06		2004-05		2003-04	
		All sources, all ages	GP & NHS CC (25-64)	All sources, all ages	GP & NHS CC (25-64)	All sources, all ages	GP & NHS CC (25-64)	All sources, all ages	GP & NHS CC (25-64)
Lancs & S Cumbria	Blackpool	20,436	17,433	21,598	18,193	22,351	18,203	23,327	18,370
	Chorley	23,399	19,783	25,535	21,872	25,926	20,609	28,321	21,436
	East Lancashire (formerly Blackburn & Burnley)	34,787	30,194	37,805	32,652	39,166	32,765	41,543	33,771
	Lancaster	17,944	15,829	22,012	19,231	22,079	18,141	22,387	17,310
	Blackburn			19,666	17,103	20,419	17,318	21,366	17,652
	Burnley			18,139	15,549	18,747	15,447	20,177	16,119
Manchester & Cheshire	Bolton	19,526	16,723	24,980	21,652	20,628	17,063	22,356	17,642
	Bury			15,922	13,202	16,242	12,933	18,560	14,672
	Bury & Rochdale	30,893	25,607	32,703	26,625	32,186	25,788	34,914	27,595
	Leighton	19,754	16,635	23,280	19,713	24,025	19,748	22,434	17,595
	Macclesfield	15,303	13,715	18,187	16,364	17,762	15,403	18,138	15,223
	Manchester	86,887	74,110	100,023	84,851	101,699	80,327	107,935	80,849
	Oldham	13,667	11,033	16,166	13,022	15,916	11,842	18,040	12,748
	Rochdale			16,781	13,423	15,944	12,855	16,354	12,923
	Stepping Hill	26,234	22,695	28,120	23,909	29,830	24,627	28,122	22,267
Tameside	15,994	13,804	16,140	13,812	16,539	13,525	17,617	14,114	
Merseyside & Cheshire	Aintree	19,193	16,965	19,450	17,142	21,745	18,729	22,522	19,038
	Arrowe Park	23,967	20,732	25,514	21,969	28,482	23,635	27,561	22,230
	Chester	20,455	17,582	22,687	19,802	23,962	20,296	23,508	19,076
	Liverpool	24,733	19,005	26,706	19,849	29,443	20,478	33,695	22,846
	Southport	15,264	13,406	15,538	13,452	17,720	14,568	17,718	14,566
	Warrington	24,883	21,186	31,143	26,597	26,215	21,371	26,799	21,132
	Whiston	18,727	15,485	22,251	17,912	22,827	17,895	23,361	17,549
Northern	Carlisle	25,440	22,785	25,238	22,237	25,800	22,378	26,634	22,647

Source Cervical Screening Programme, England:2006-07 Bulletin: 2007/14/HSCIC Table 19 © 2007, The Information Centre

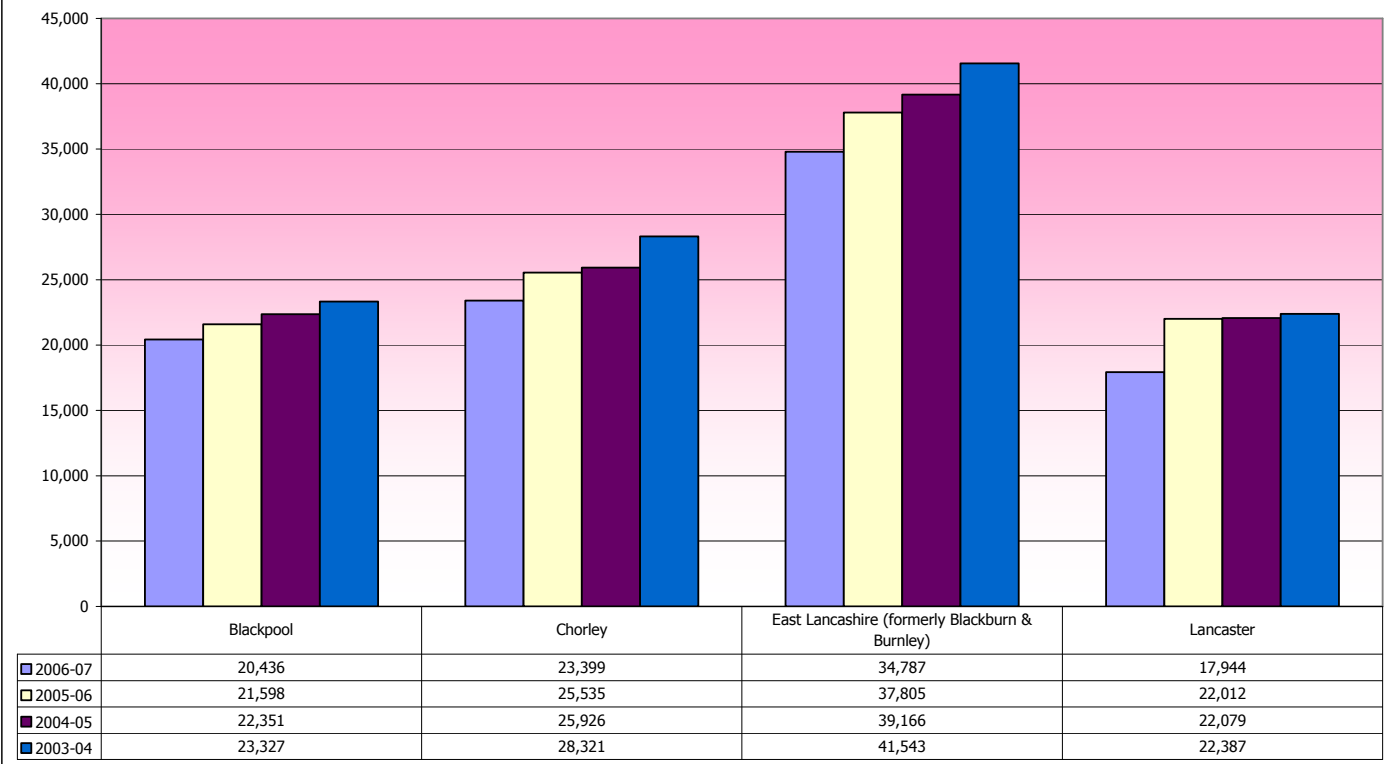
Workload (all sources, all ages) 2003-2007 for Greater Manchester & Cheshire Cancer Network.



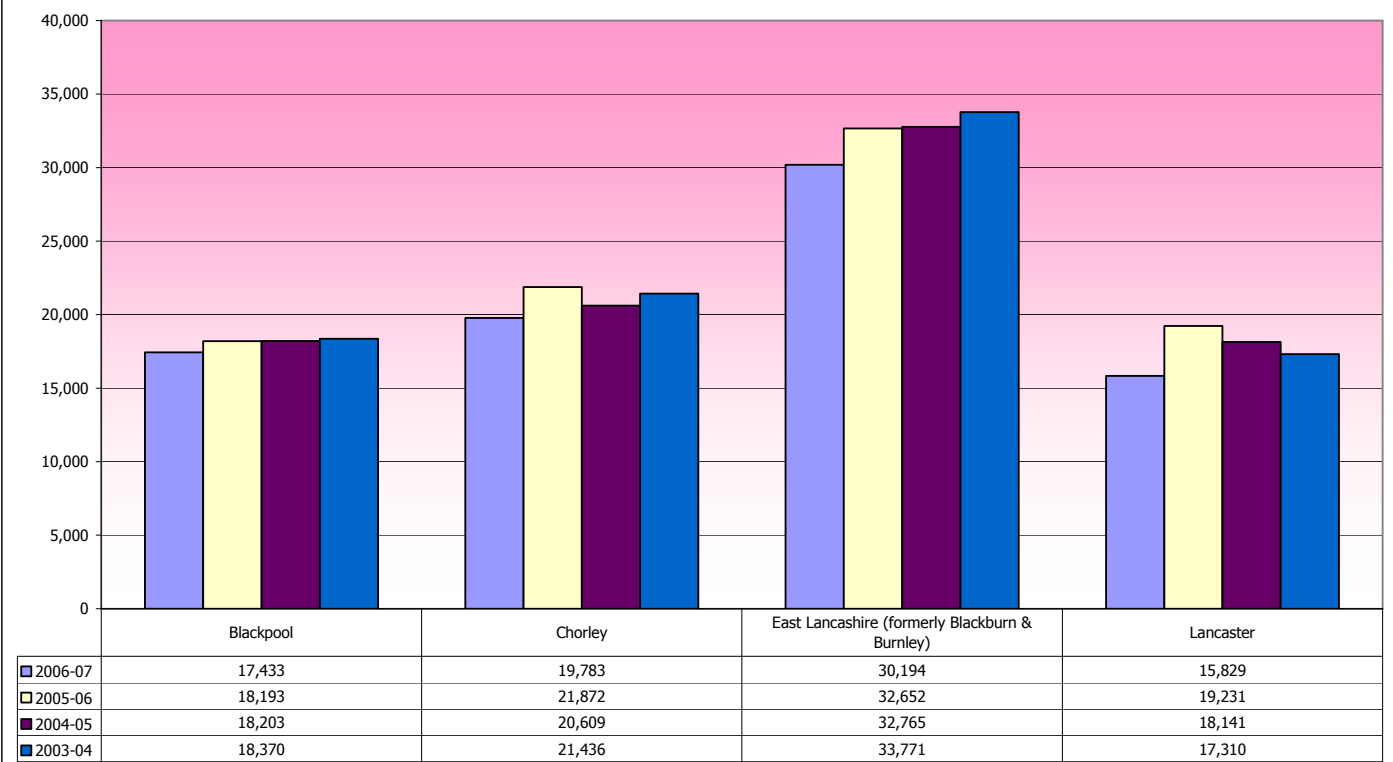
Workload (GP & NHS CC) 2003-2007 for the Greater Manchester & Cheshire Cancer Network.



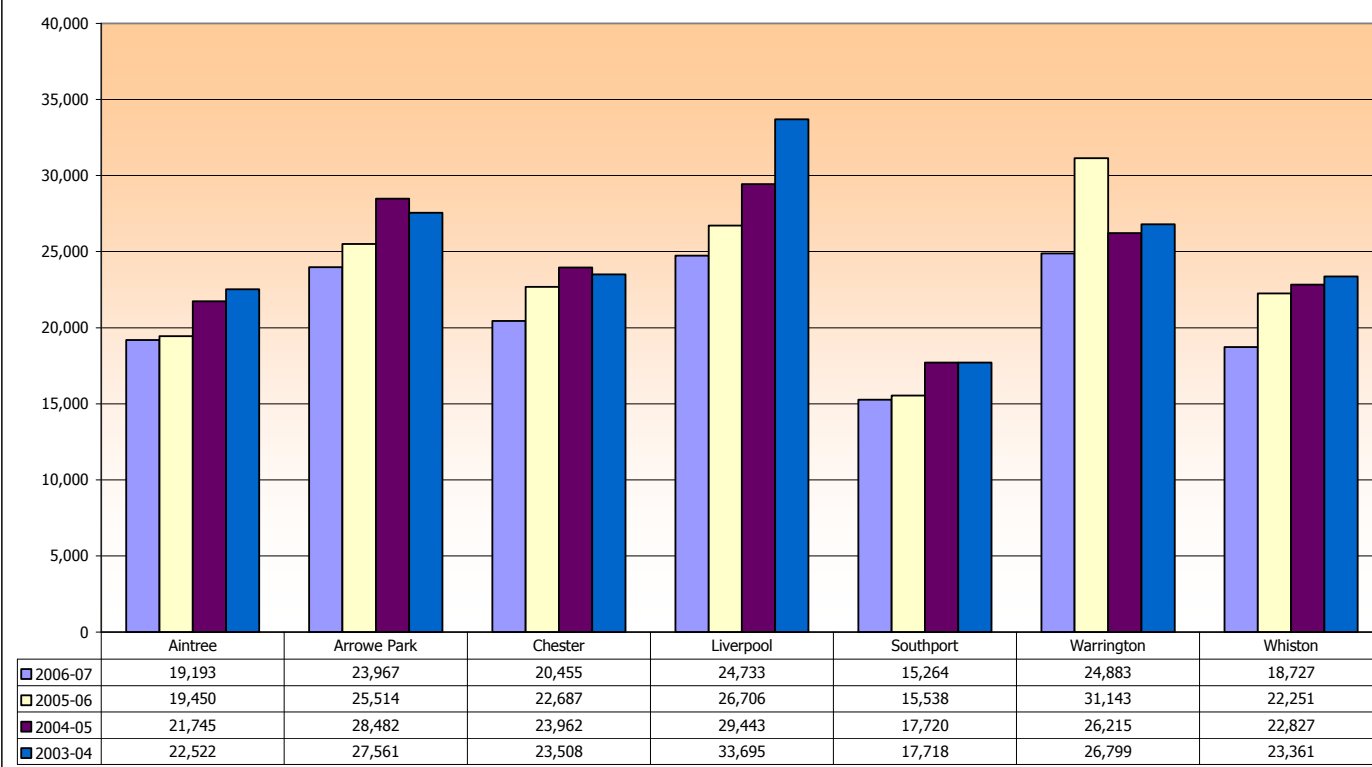
Workload (all sources, all ages) 2003-2007 for Lancashire & South Cumbria Cancer Network.



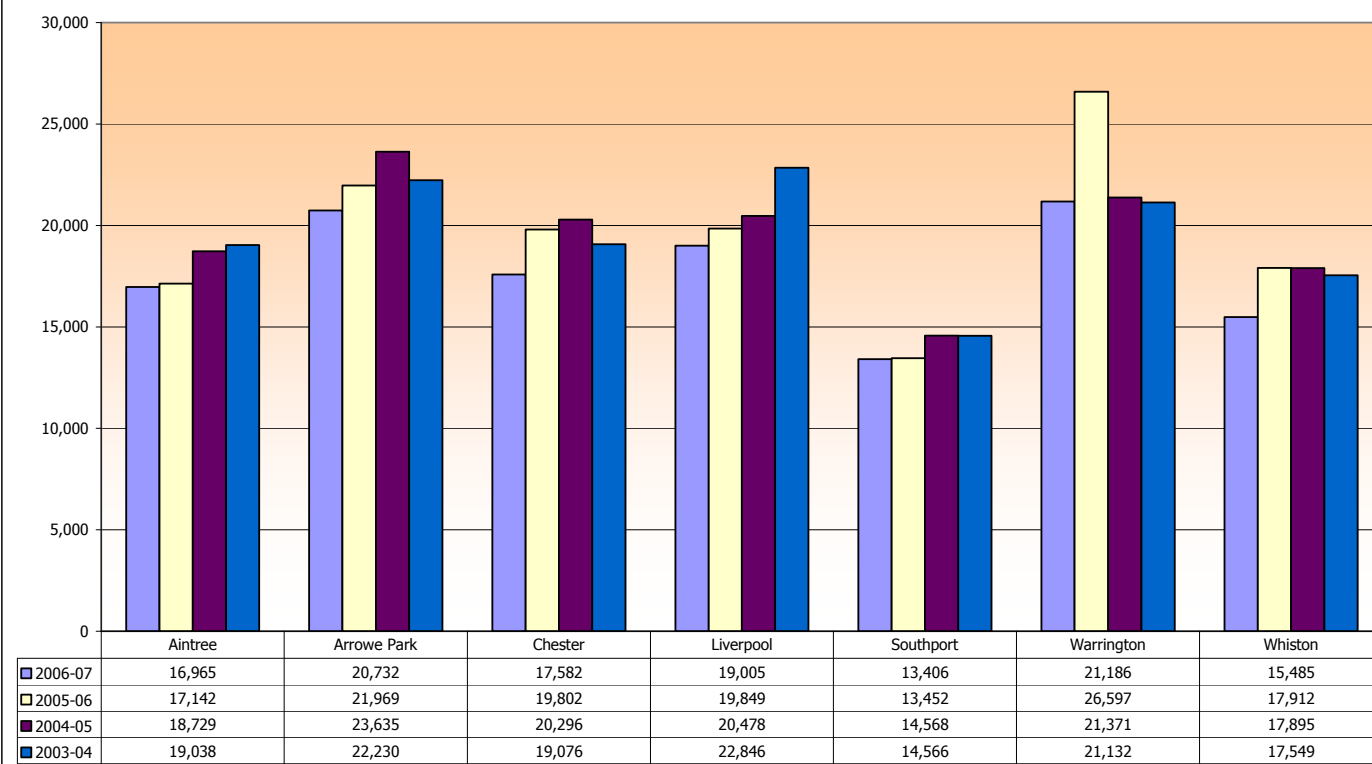
Workload (GP & NHS CC) 2003-2007 for the Lancashire & South Cumbria Cancer Network.



Workload (all sources, all ages) 2003-2007 for Merseyside& Cheshire Cancer Network.



Workload (GP & NHS CC) 2003-2007 for the Merseyside & Cheshire Cancer Network.



Measuring laboratory performance in the North West

2003-04 to 2006-07

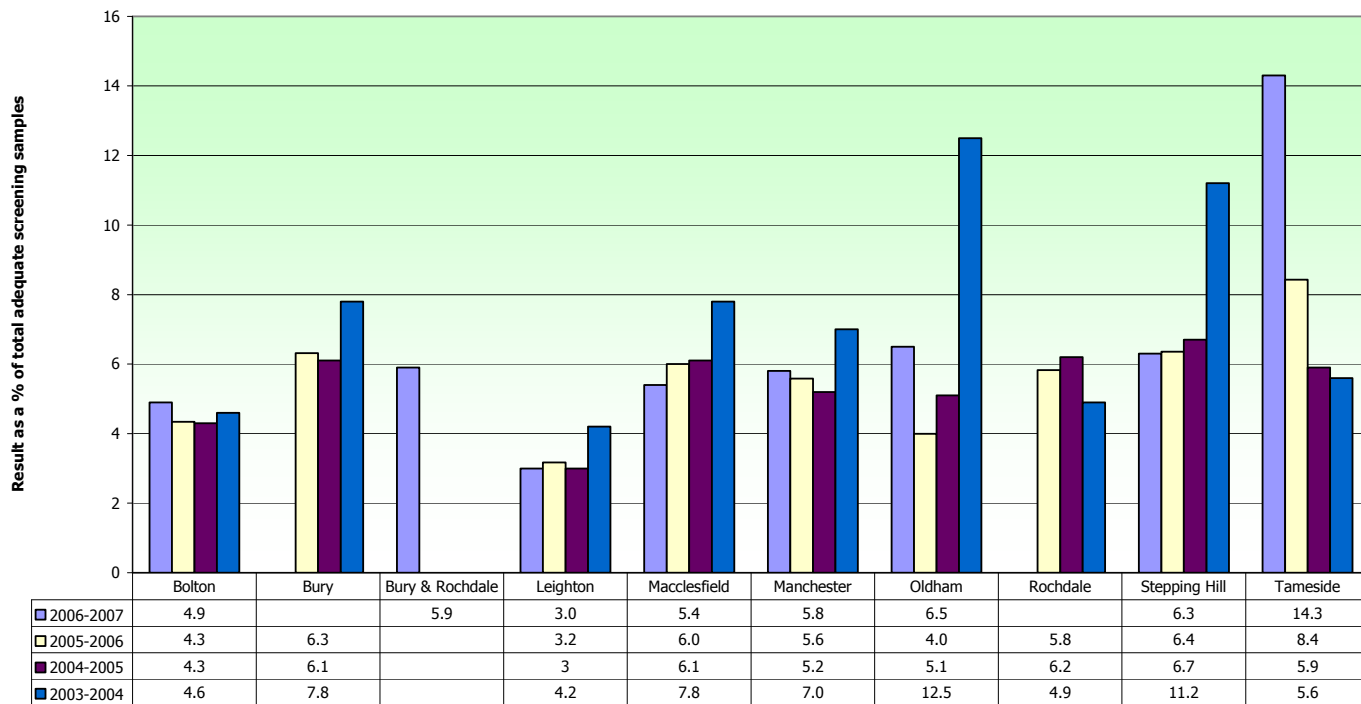
Reporting Profile

Laboratory by Cancer Network		2006-2007		2005-2006		2004-2005		2003-2004	
		Low Grade Borderline/ Mild	High Grade Moderate/Severe & above	Low Grade Borderline/ Mild	High Grade Moderate/Severe & above	Low Grade Borderline/ Mild	High Grade Moderate/Severe & above	Low Grade Borderline/ Mild	High Grade Moderate/Severe & above
Lancs & S Cumbria	Blackburn			4.8	0.8	4.9	0.7	4.7	1.0
	Blackpool	6.5	1.7	4.6	1.1	4.2	1.1	5.6	1.5
	East Lancashire Hos	5.6	0.7						
	Burnley			6.2	0.8	5.8	0.5	8.1	1.2
	Chorley	6.4	1.4	5.0	1.0	4	0.8	4.2	1.1
	Lancaster	5.9	0.9	5.0	0.7	6.1	1.4	9.8	1.6
Manchester & Cheshire	Bolton	4.9	1.2	4.3	0.9	4.3	0.9	4.6	1.1
	Bury			6.3	1.0	6.1	0.8	7.8	1.2
	Bury & Rochdale	5.9	1.2						
	Leighton	3.0	0.8	3.2	0.8	3	1.0	4.2	1.3
	Macclesfield	5.4	0.8	6.0	0.7	6.1	0.8	7.8	1.0
	Manchester	5.8	1.5	5.6	0.9	5.2	0.8	7.0	1.1
	Oldham	6.5	1.1	4.0	1.0	5.1	0.7	12.5	2.0
	Rochdale			5.8	1.2	6.2	1.0	4.9	0.9
	Stepping Hill	6.3	1.0	6.4	0.8	6.7	1.1	11.2	1.4
	Tameside	14.3	0.8	8.4	1.2	5.9	0.8	5.6	0.9
Merseyside & Cheshire	Aintree	5.9	1.1	7.0	1.2	4.8	0.9	4.6	1.0
	Arrowe Park	6.0	0.7	6.6	0.7	4.9	0.9	5.6	1.2
	Chester	5.3	0.9	3.9	0.9	5.2	1.0	6.8	1.3
	Liverpool	5.2	1.2	5.5	1.4	5.2	1.5	6.4	1.8
	Southport	7.2	1.1	6.0	1.3	3.7	1.1	4.3	1.3
	Warrington	4.6	1.3	5.4	1.4	3.5	1.2	3.9	1.4
	Whiston	5.5	1.0	4.7	1.0	4.7	1.0	7.3	1.5
Northern	Carlisle	6.5	1.1	6.1	1.0	5.6	1.2	5.2	1.3

* All reporting profiles are taken from the 10th to 90th percentile range 2006-2007 as shown in Cervical Screening Programme England 2006-07

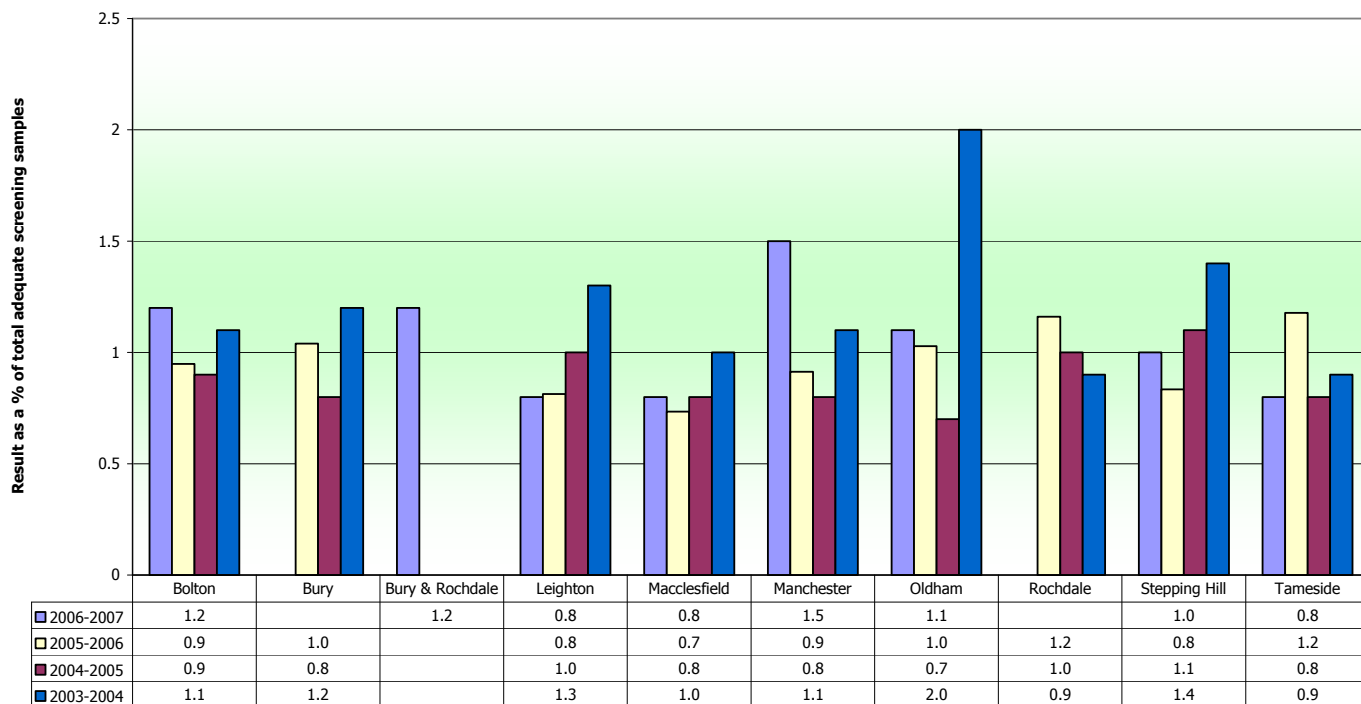
Source Cervical Screening Programme, England:2006-07 Bulletin: 2007/14/HSCIC Table 19 © 2007, The Information Centre

Laboratory Reporting Profiles for Low Grade (Borderline/Mild) Sample Results for Greater Manchester & Cheshire Cancer Network



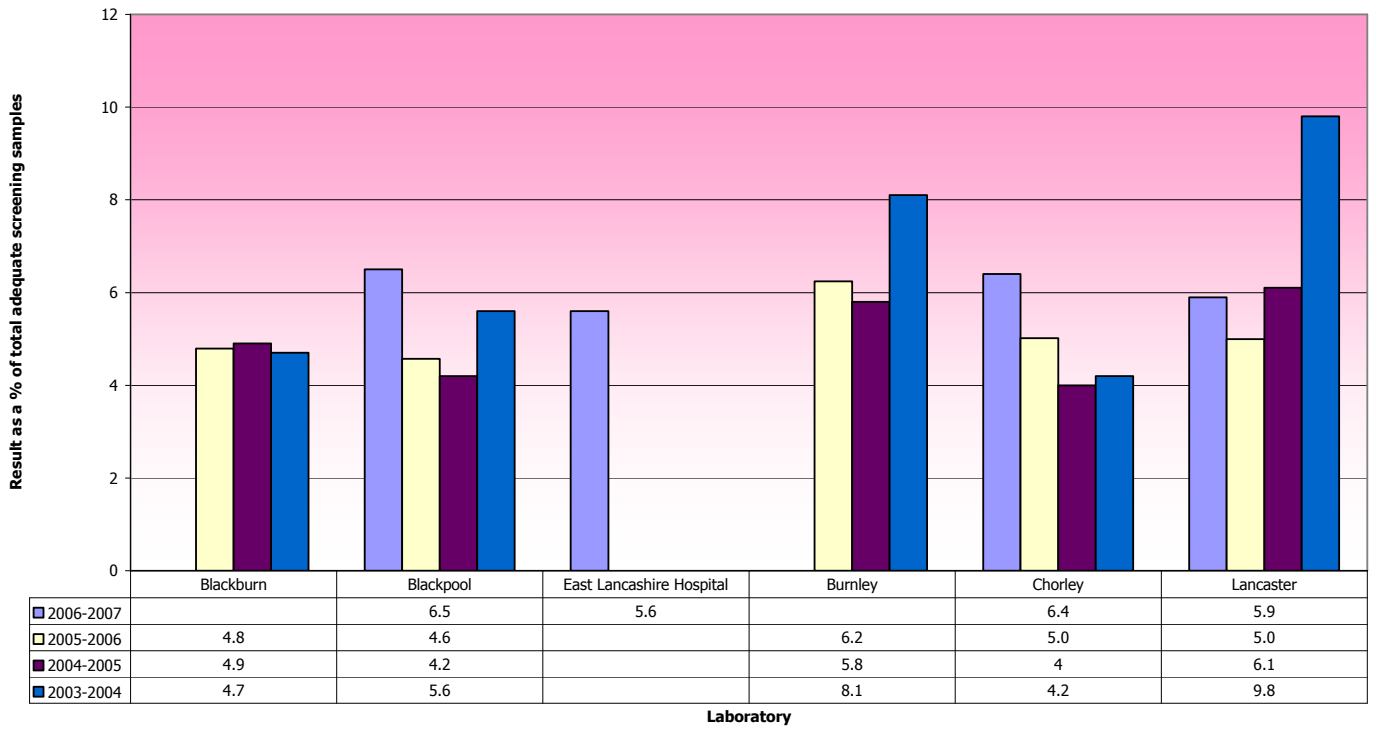
Laboratory

Laboratory Reporting Profiles for High Grade (Moderate/Severe & above) Sample Results for Greater Manchester & Cheshire Cancer Network

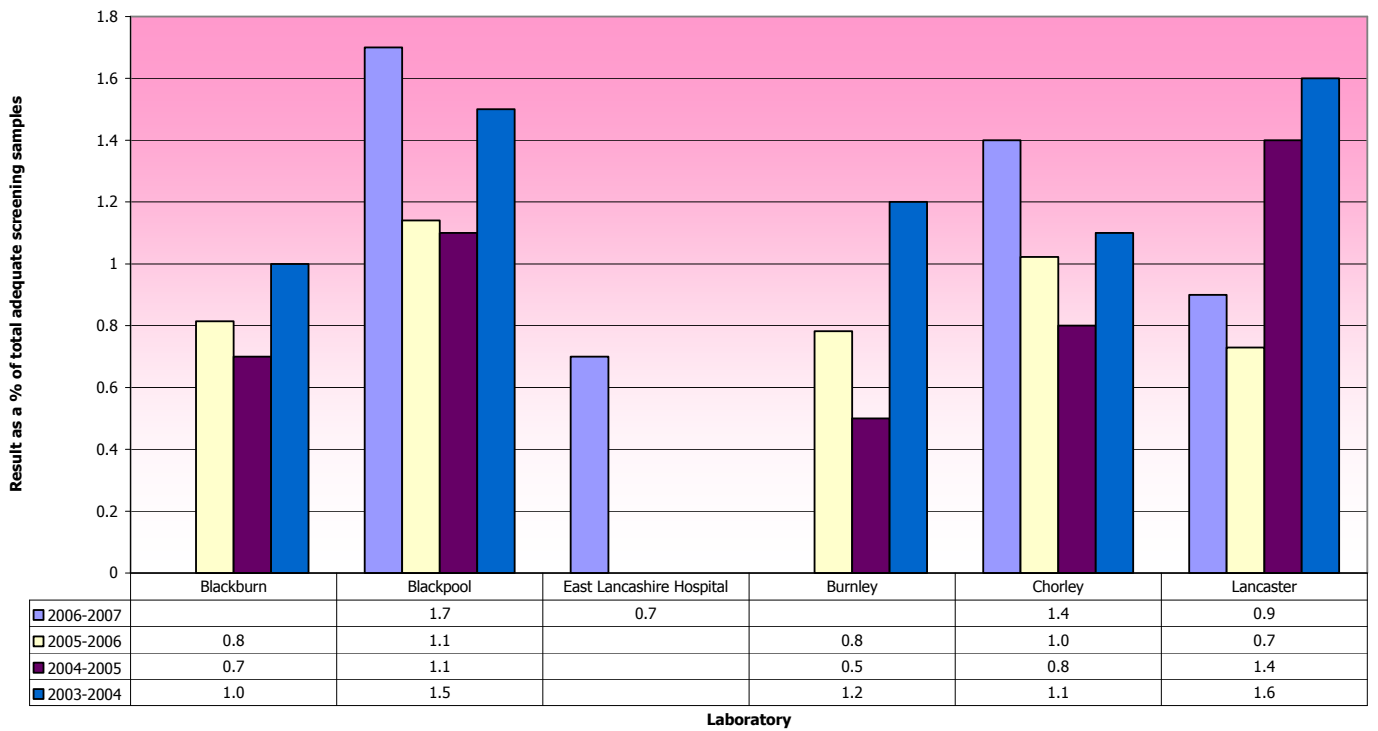


Laboratory

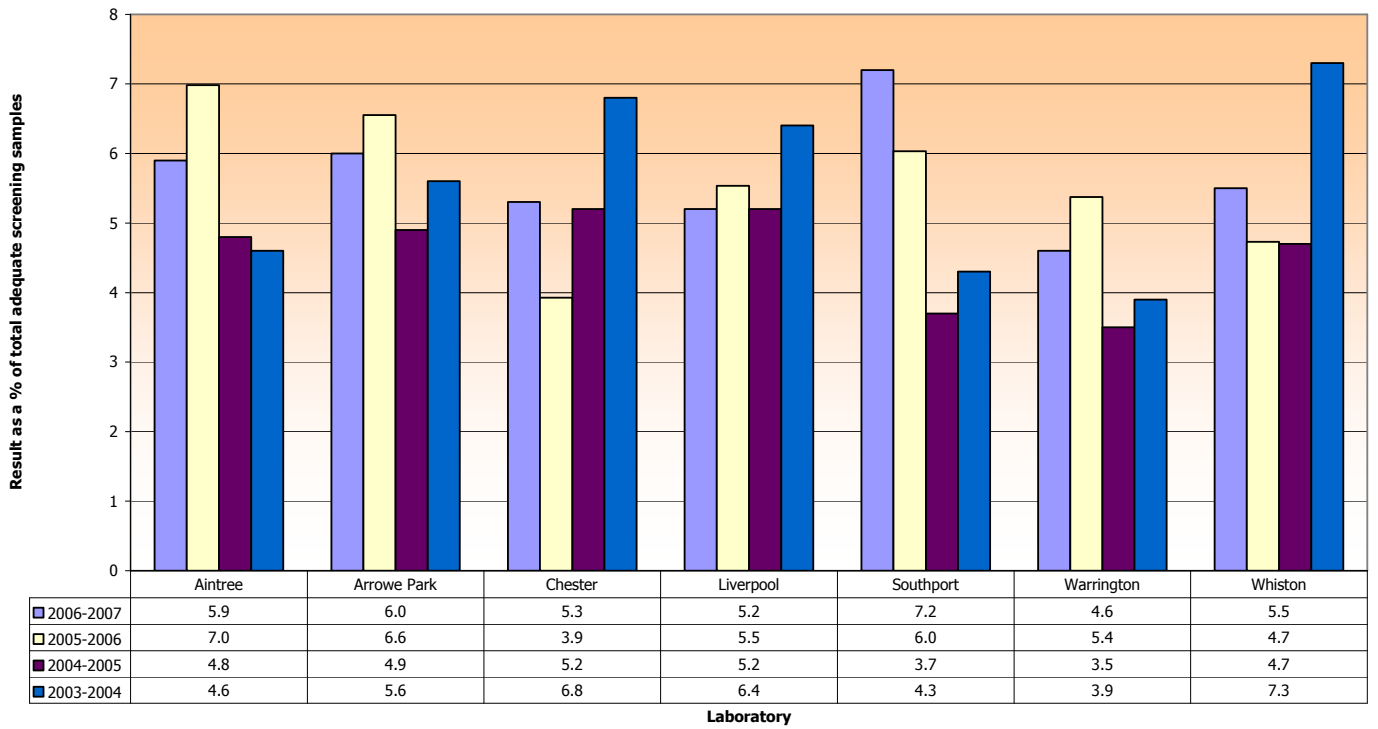
Laboratory Reporting Profiles for Low Grade (Borderline/Mild) Sample Results for Lancashire & South Cumbria Cancer Network



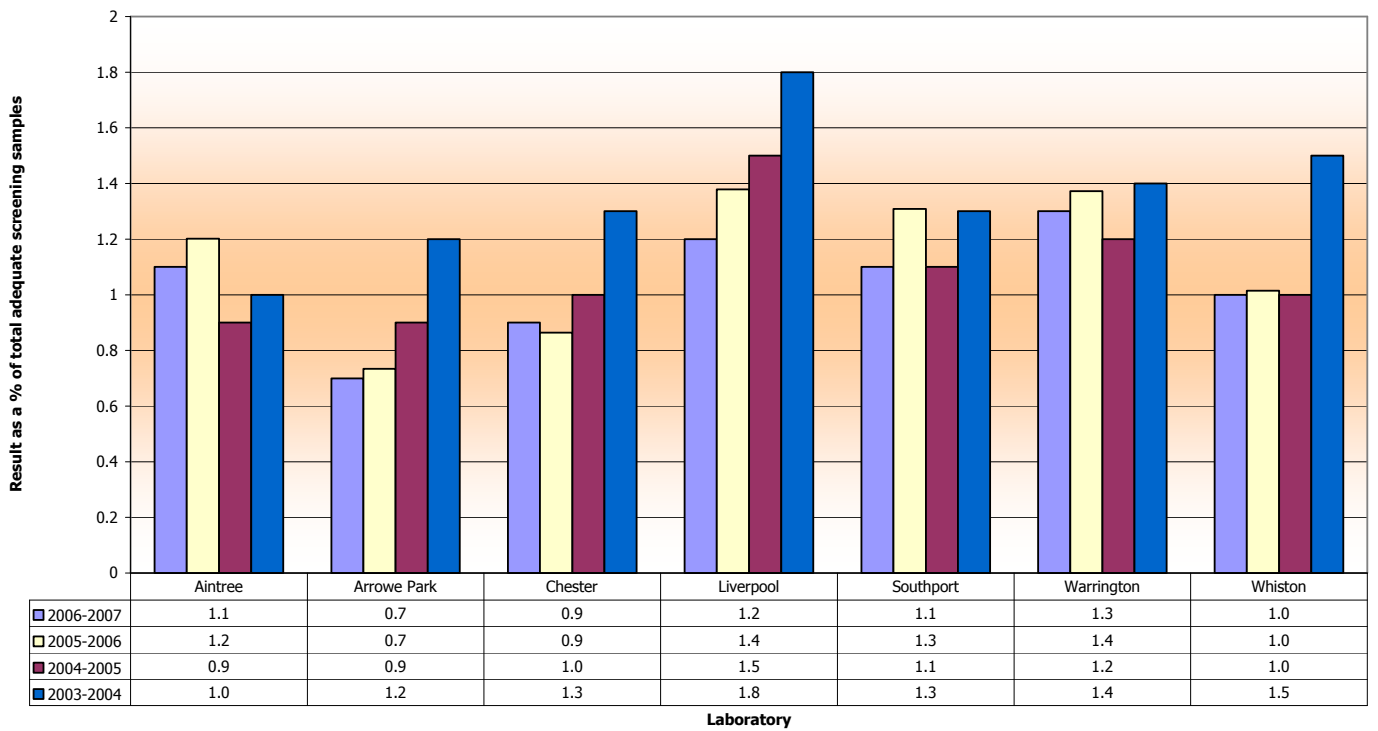
Laboratory Reporting Profiles for High Grade (Moderate/Severe & above) Sample Results for Lancashire & South Cumbria Cancer Network



Laboratory Reporting Profiles for Low Grade (Borderline/Mild) Sample Results for Merseyside & Cheshire Cancer Network



Laboratory Reporting Profiles for High Grade (Moderate/Severe & above) Sample Results for Merseyside & Cheshire Cancer Network



Measuring laboratory performance in the North West

2003-04 to 2006-07

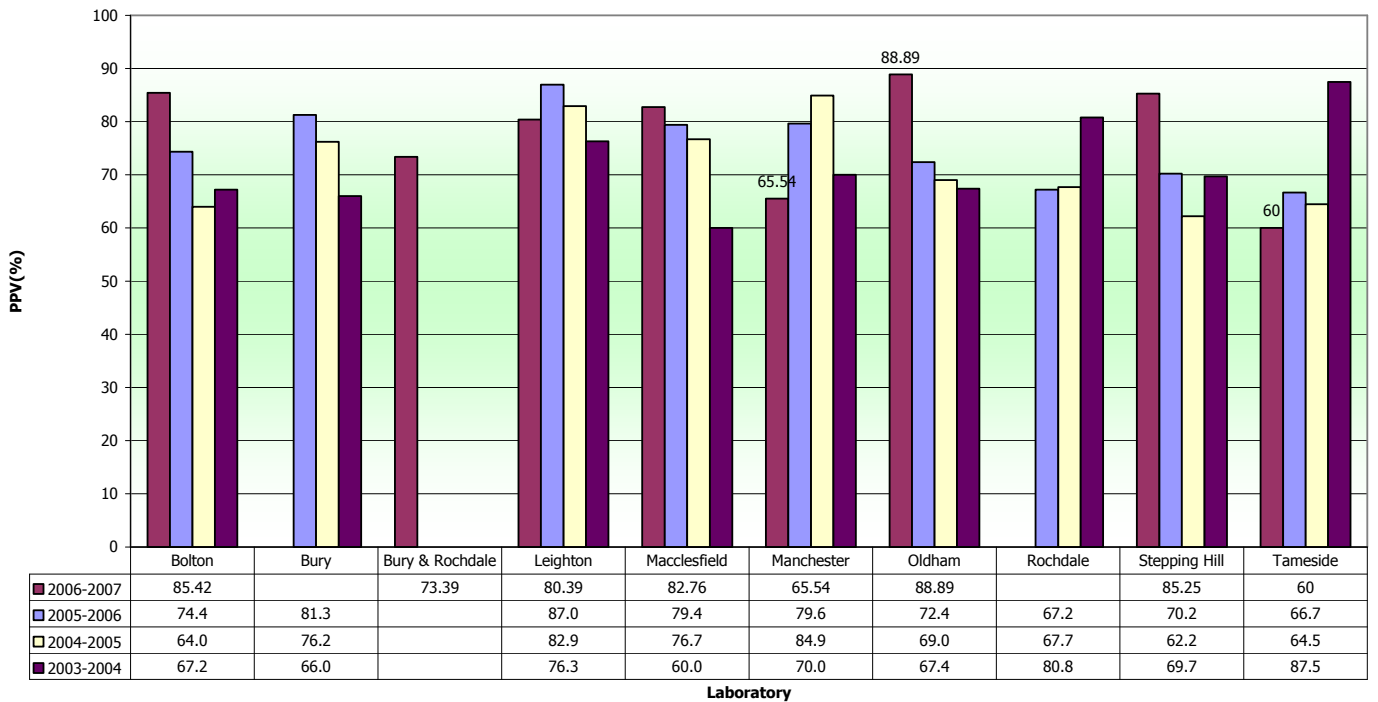
PPV %

Correlation of Cytology & Histology Quality Standard 66.9% to 87.0%		Positive Predictive Value (%)							
		2006-2007		2005-2006		2004-2005		2003-2004	
Laboratory by Cancer Network		Part C1 Apr 06 - Jun 06	Part C2 Apr 05 - Mar 06	Part C1 Apr 05 - Jun 05	Part C2 Apr 04 - Mar 05	Part C1 Apr 04 - Jun 04	Part C2 Apr 03 - Mar 04	Part C1 Apr 03 - Jun 03	Part C2 Apr 02 - Mar 03
Lancs & S Cumbria	Blackburn			59.3	59.9	74.2	71.0	71.4	75.9
	Blackpool	87.06	85.12	82.5	83.4	92.1	77.6	84.3	79.9
	Burnley			86.7	82.3	83.3	72.7	66.0	74.2
	East Lancashire	85.9	80.9						
	Chorley	75	82.05	80.3	80.8	69.2	74.6	75.4	75.1
	Lancaster	61.9	79.02	68.6	71.9	63.8	67.9	68.6	66.6
Manchester & Cheshire	Bolton	85.42	79.82	74.4	73.8	64.0	74.2	67.2	71.8
	Bury			81.3	82.1	76.2	72.2	66.0	75.6
	Bury & Rochdale	73.39							
	Leighton	80.39	88.55	87.0	86.8	82.9	79.7	76.3	81.4
	Macclesfield	82.76	84.17	79.4	76.2	76.7	70.7	60.0	75.8
	Manchester	65.54	80.57	79.6	80.6	84.9	77.7	70.0	73.9
	Oldham	88.89	76.47	72.4	78.9	69.0	65.8	67.4	68.7
	Rochdale			67.2	73.6	67.7	70.1	80.8	69.5
	Stepping Hill	85.25	75.23	70.2	73.0	62.2	70.4	69.7	69.7
Tameside	60	71.54	66.7	69.2	64.5	85.9	87.5	78.7	
Merseyside & Cheshire	Aintree	66.2	80.69	89.4	85.5	85.7	79.9	79.6	74.4
	Arrowe Park	86.84	81.52	80.4	80.7	84.2	76.7	71.7	74.5
	Chester	86.27	85.56	81.6	74.0	74.5	69.5	71.4	76.1
	Liverpool	89.74	84.72	82.7	84.6	84.0	85.3	89.2	81.3
	Southport	65.85	70.5	68.1	76.6	75.0	65.9	57.1	59.7
	Warrington	89.9	85.58	84.6	85.1	85.5	79.5	71.4	80.9
	Whiston	76.81	78.86	86.2	81.7	76.6	77.1	74.5	78.7
Northern	Carlisle	84.52	90.91	91.4	82.3	82.1	85.4	85.5	84.8

Source Cervical Screening Programme, England:2006-07 Bulletin: 2007/14/HSCIC Table 19 © 2007, The Information Centre

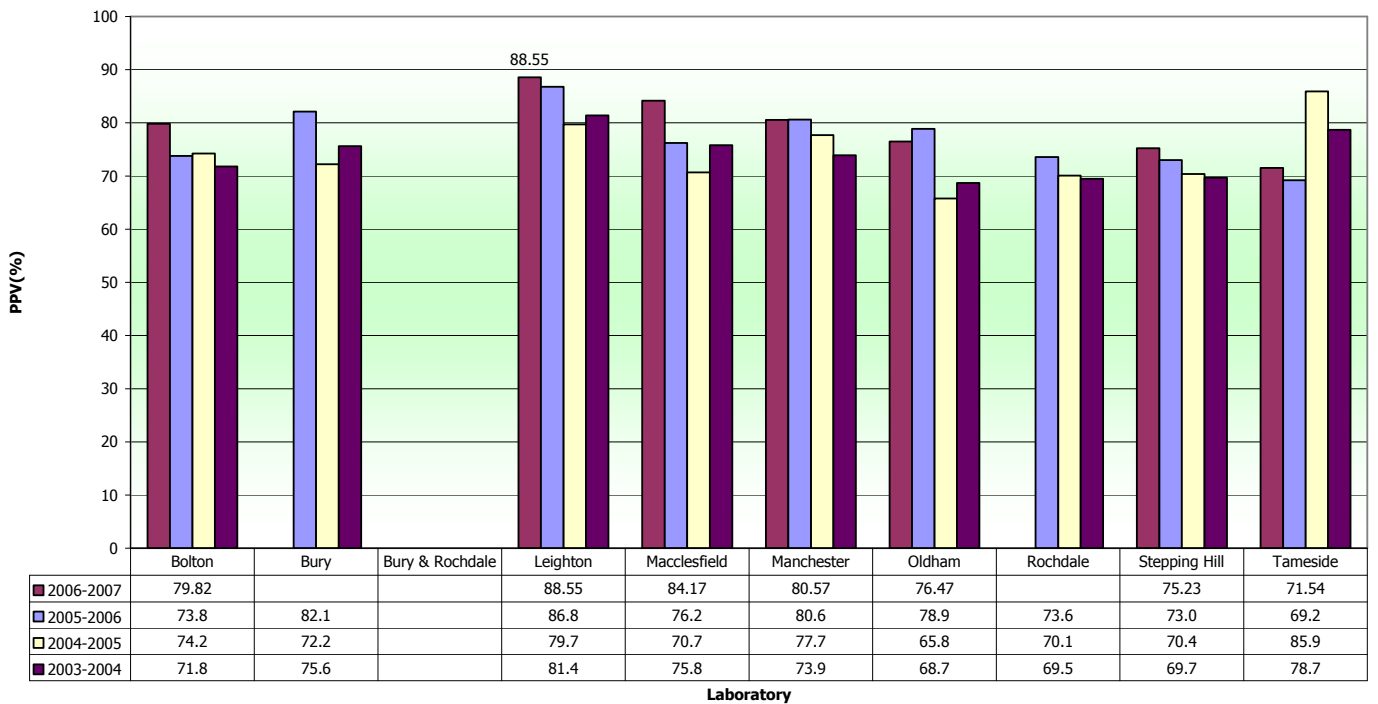
Positive Predictive Value (C1) by Laboratory 2003-2007 for Greater Manchester & Cheshire Cancer Network.

Standard 70.5% to 86.4%



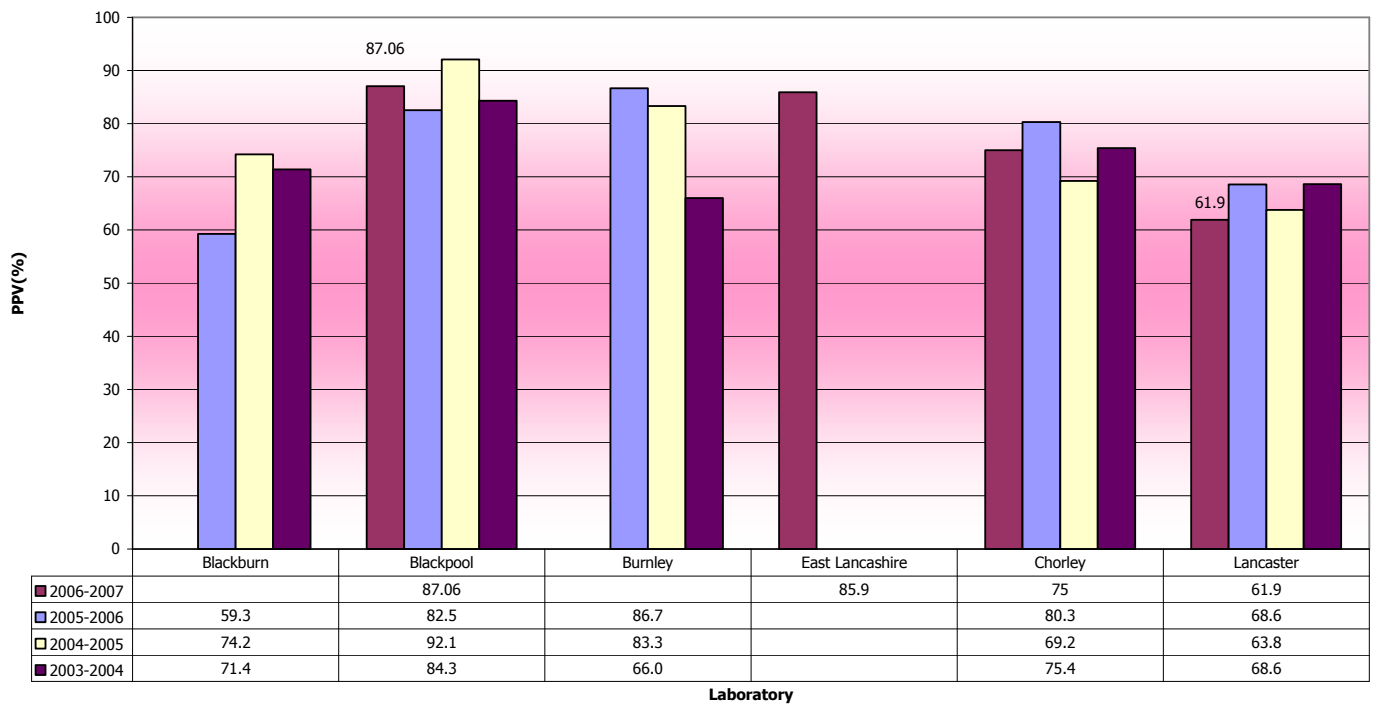
Positive Predictive Value (C2) by Laboratory 2003-2007 for Greater Manchester & Cheshire Cancer Network.

Standard 70.5% to 86.4%



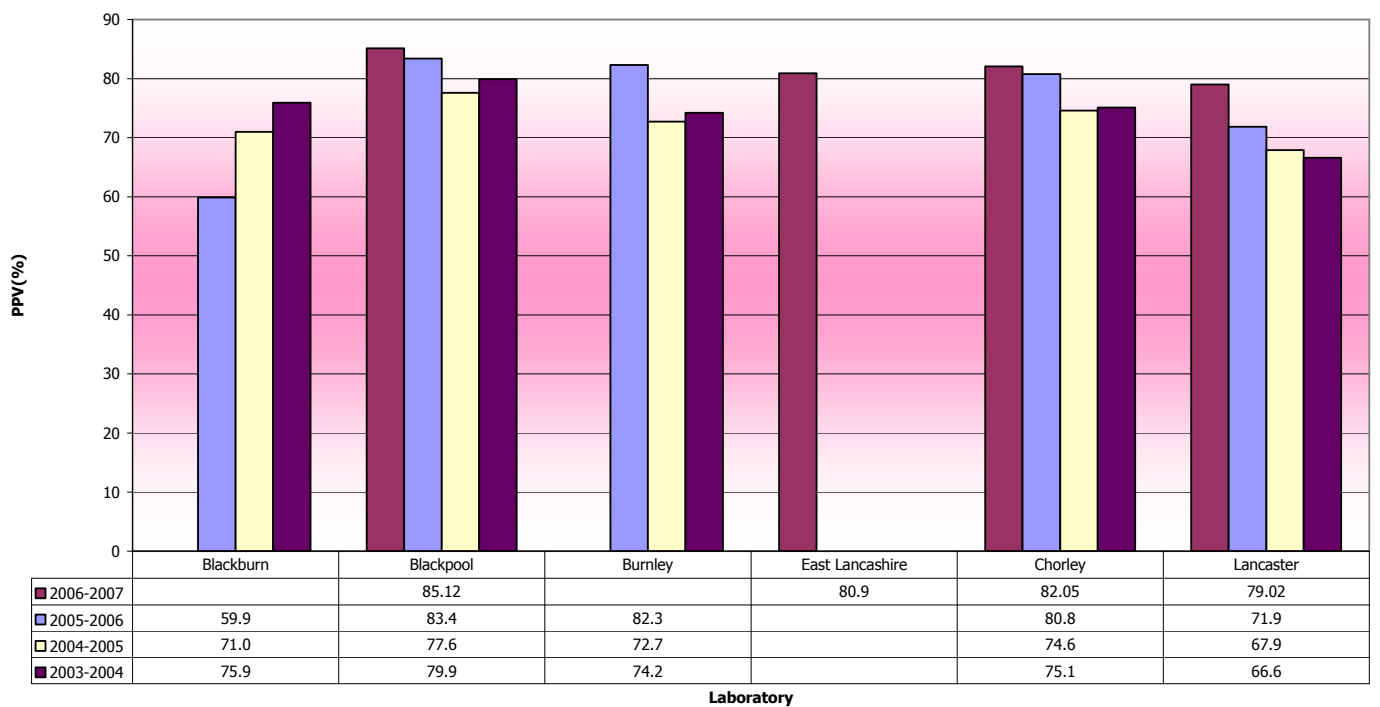
Positive Predictive Value (C1) by Laboratory 2003-2007 for Lancashire & South Cumbria Cancer Network.

Standard 70.5% to 86.4%



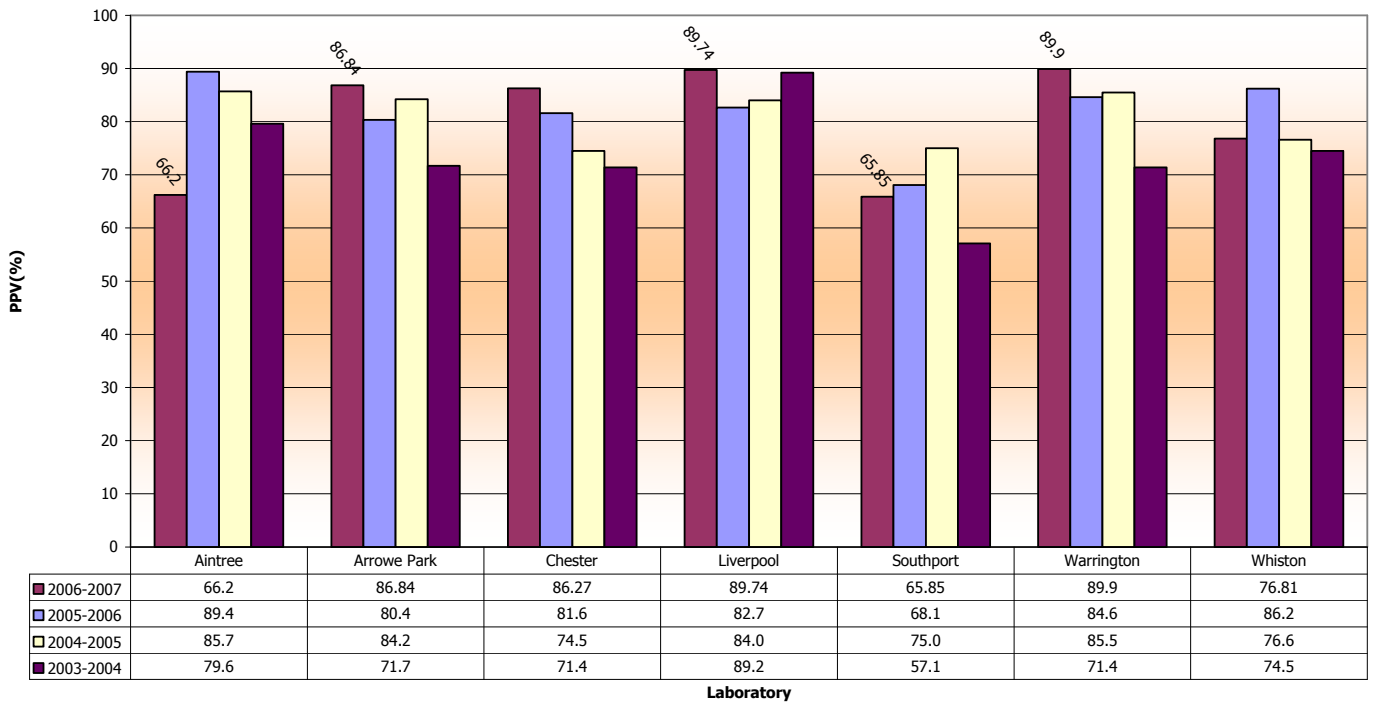
Positive Predictive Value (C2) by Laboratory 2003-2007 for Lancashire & South Cumbria Cancer Network.

Standard 70.5% to 86.4%



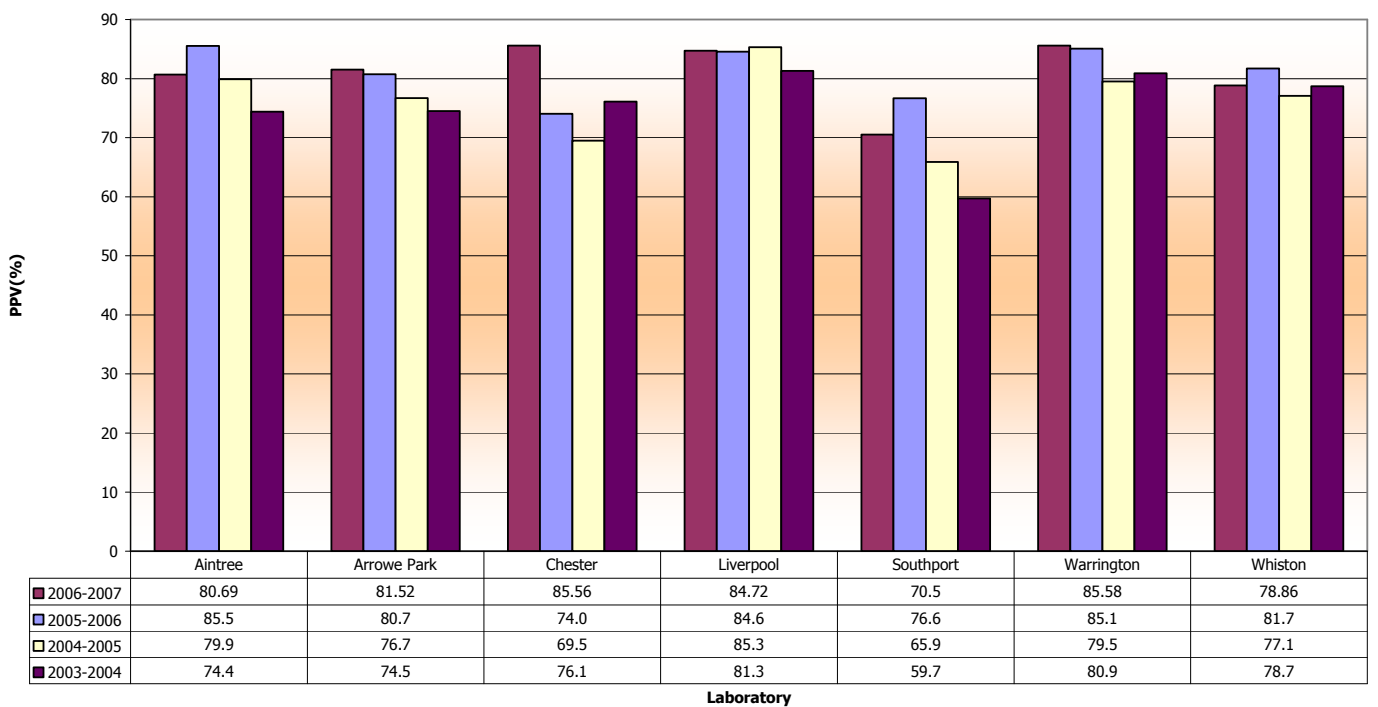
Positive Predictive Value (C1) by Laboratory 2003-2007 for Merseyside & Cheshire Cancer Network.

Standard 70.5% to 86.4%



Positive Predictive Value (C2) by Laboratory 2003-2007 for Merseyside & Cheshire Cancer Network.

Standard 70.5% to 86.4%



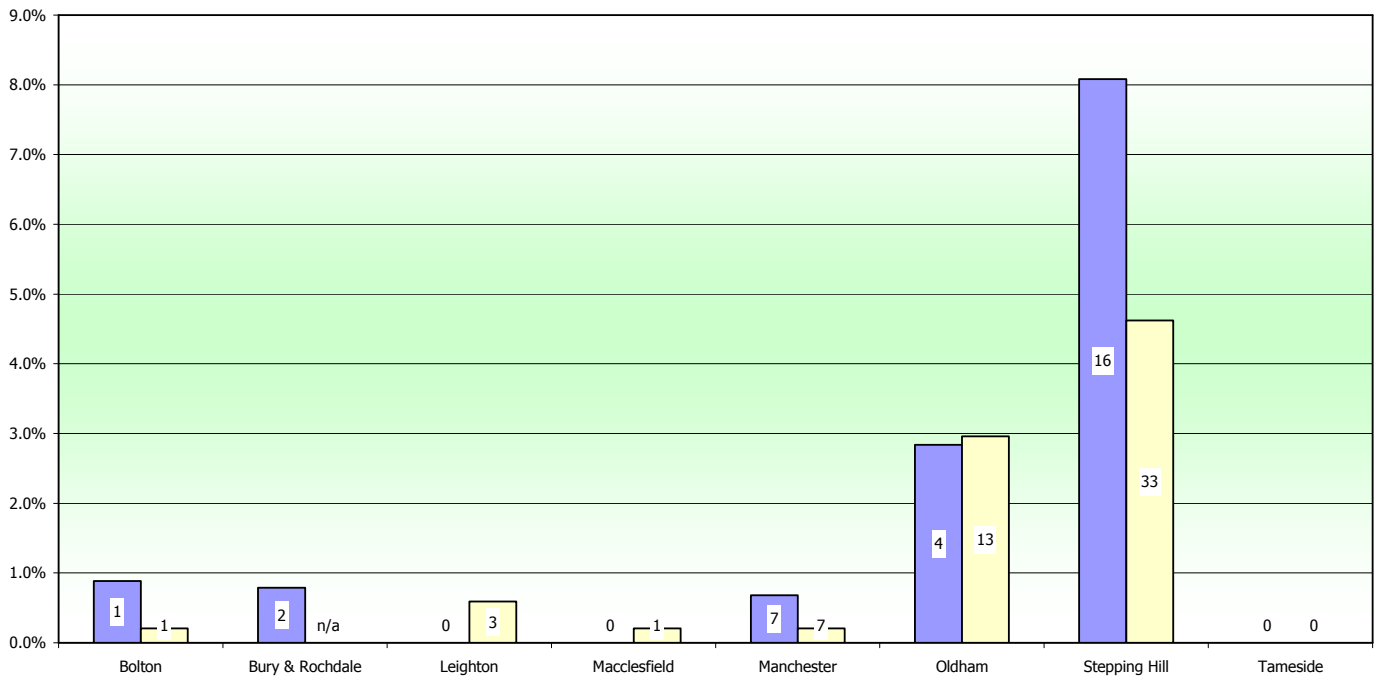
KC61 Parts C1 & C2 Lost to follow up as a percentage (target < 5%) and number

Laboratory by Cancer Network		Lost to follow up (C1)		Lost to follow up (C2)	
		%	number	%	number
		Lancs & S Cumbria	Blackpool	4.9%	10
Chorley	2.2%		4	1.7%	13
East Lancash	0.4%		1	0.0%	0
Lancaster	4.7%		4	3.5%	17
Manchester & Cheshire	Bolton	0.9%	1	0.2%	1
	Bury & Rochd	0.8%	2	n/a	n/a
	Leighton	0.0%	0	0.6%	3
	Macclesfield	0.0%	0	0.2%	1
	Manchester	0.7%	7	0.2%	7
	Oldham	2.8%	4	3.0%	13
	Stepping Hill	8.1%	16	4.6%	33
	Tameside	0.0%	0	0.0%	0
Merseyside & Cheshire	Aintree	0.7%	2	1.1%	11
	Arrove Park	0.6%	1	1.1%	8
	Chester	3.6%	6	4.8%	36
	Liverpool	3.3%	6	2.4%	18
	Southport	0.0%	0	1.5%	7
	Warrington	3.4%	7	2.4%	25
	Whiston	0.0%	0	1.0%	8
Northern	Carlisle	3.4%	7	0.8%	5

**KC61 Parts C1 & C2 - Lost to follow up as a percentage (number in columns equals number of women).
Greater Manchester & Cheshire Cancer Network**

Target < 5%

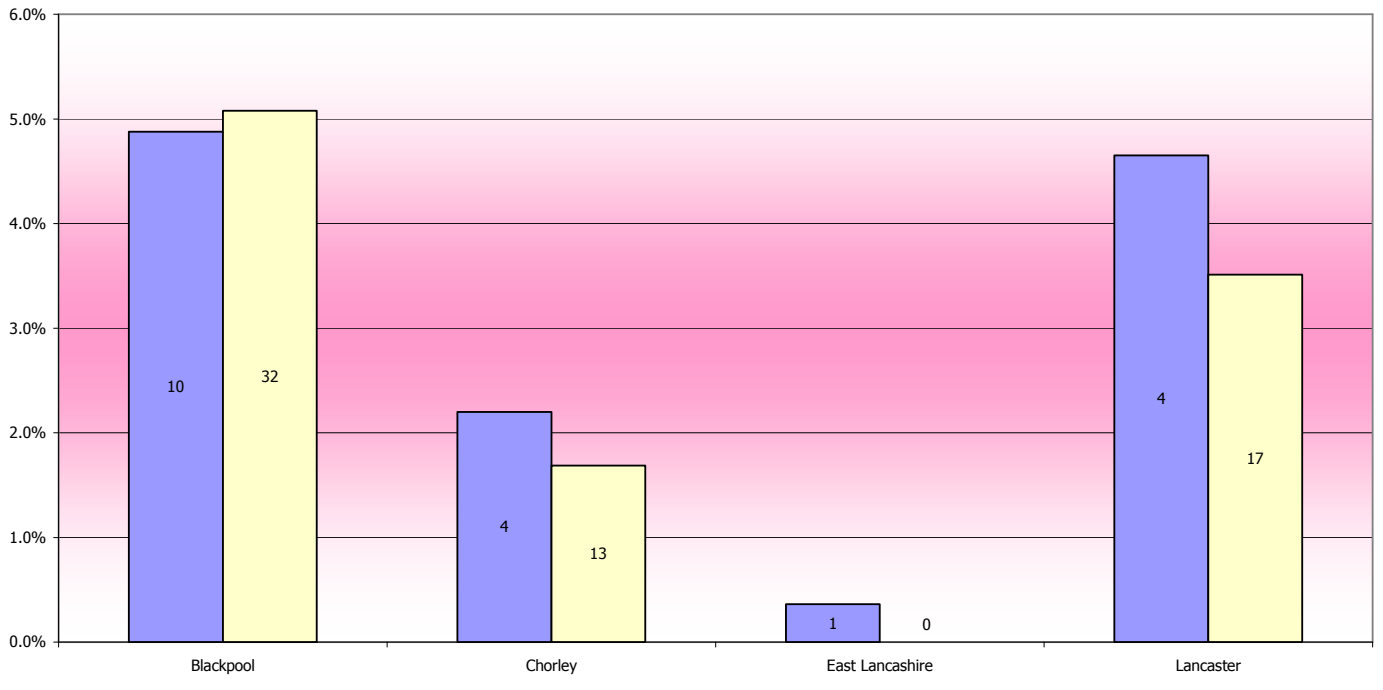
■ Lost to follow up (C1) % □ Lost to follow up (C2) %



**KC61 Parts C1 & C2 - Lost to follow up as a percentage (number in columns equals number of women). Lancashire
& South Cumbria Cancer Network**

Target < 5%

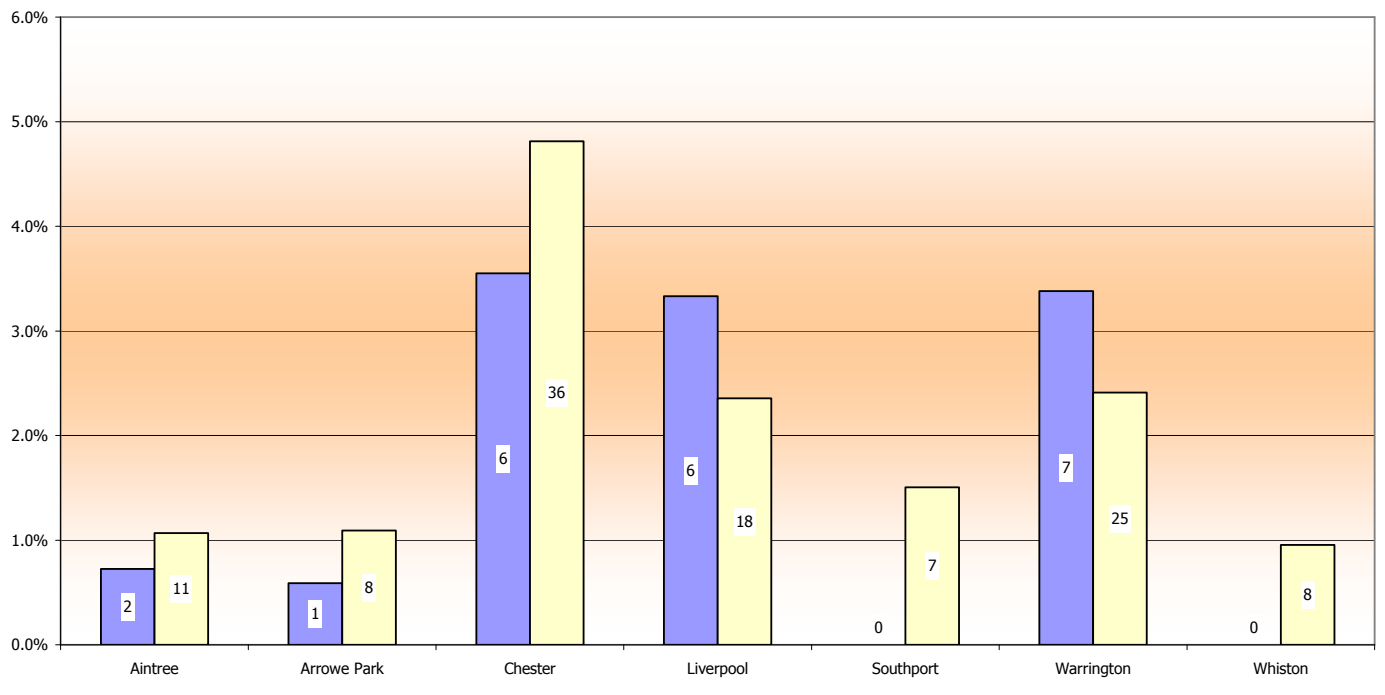
■ Lost to follow up (C1) % □ Lost to follow up (C2) %



KC61 Parts C1 & C2 - Lost to follow up as a percentage (number in columns equals number of women). Merseyside & Cheshire Cancer Network

Target < 5%

■ Lost to follow up (C1) % □ Lost to follow up (C2) %



Measuring laboratory performance in the North West

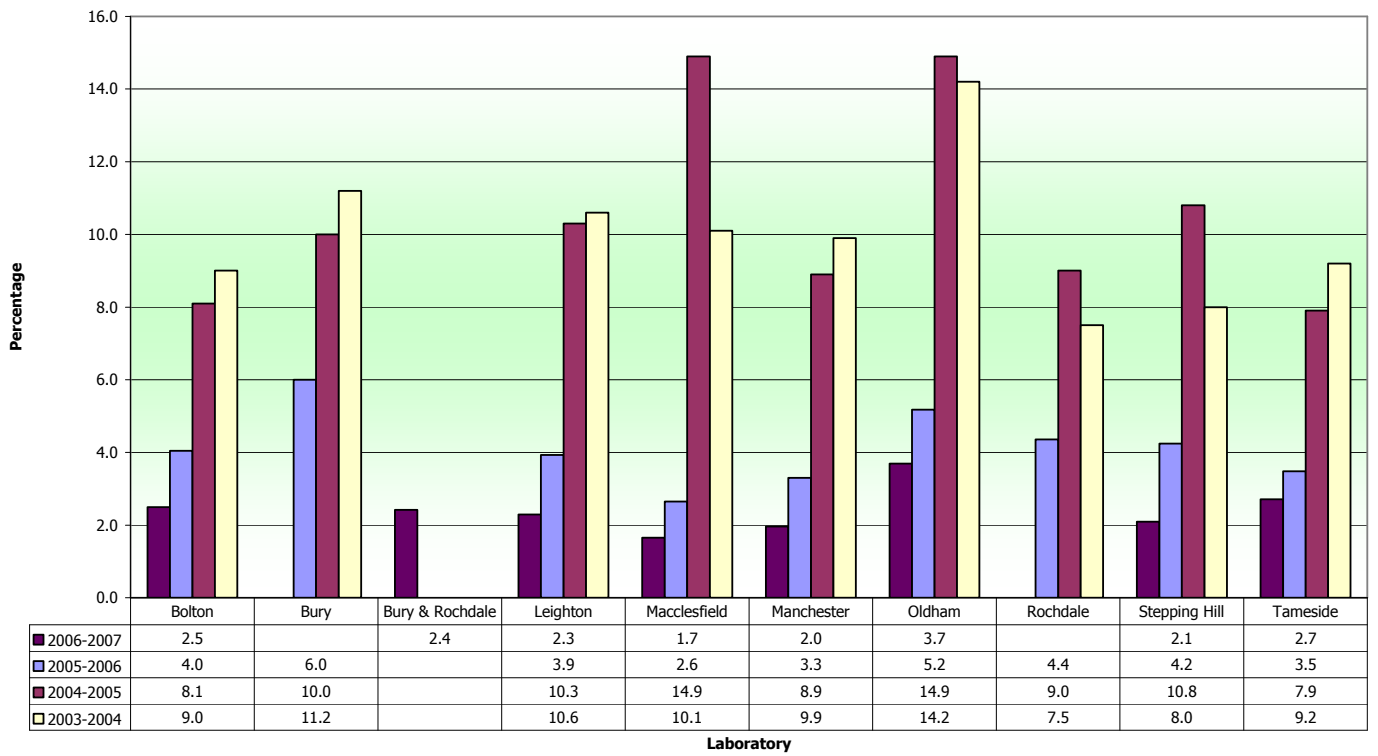
2003-04 to 2006-07

Inadequate Smears

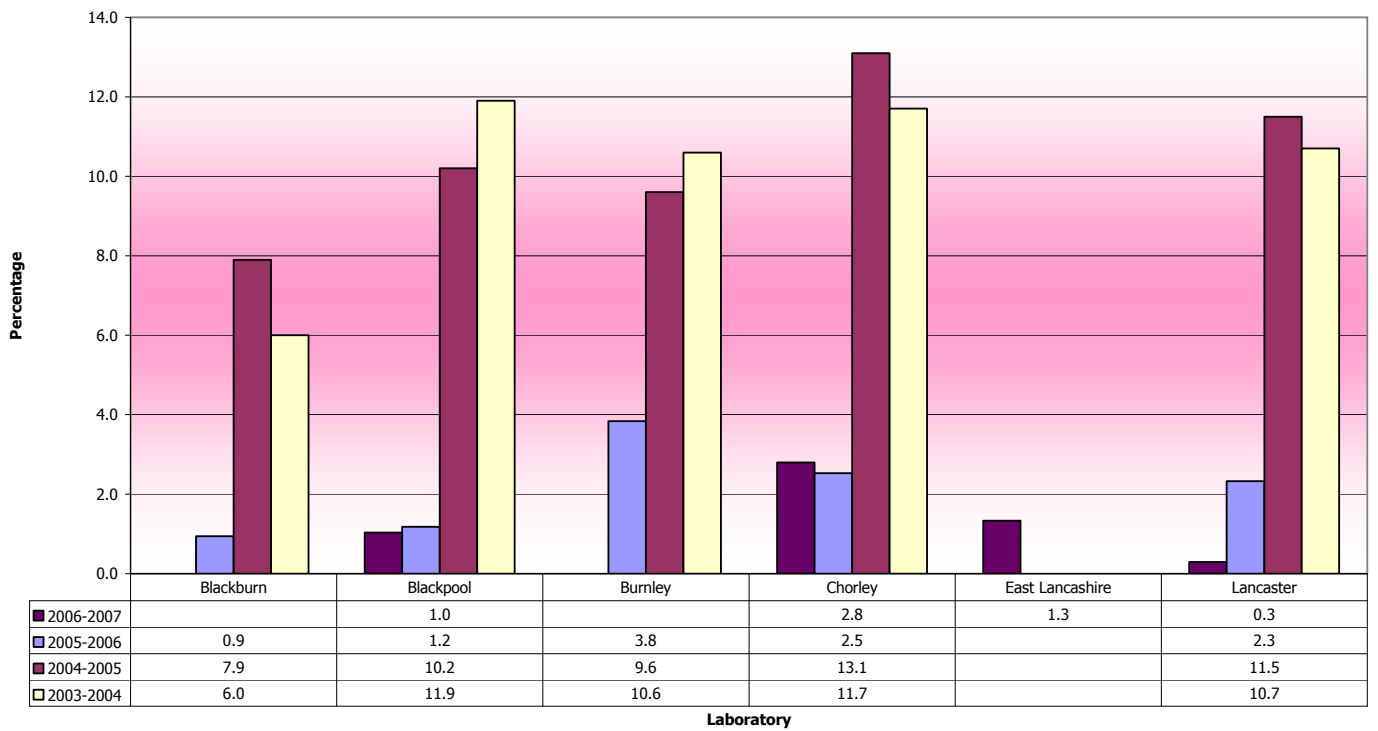
Laboratory by Cancer Network	Inadequate Samples												
	2006-2007			2005-2006			2004-2005			2003-2004			
	Number of inadequate samples	(%)	Annual difference	Number of inadequate samples	(%)	Annual difference	Number of inadequate samples	(%)	Annual difference	Number of inadequate samples	(%)	Annual difference	
Lancs & Cumbria	Blackburn			161	0.9	-7.0	1259	7.9	1.9	1159	6.0	0.1	
	Blackpool	180	1.0	-0.1	215	1.2	-9.0	1666	10.2	-1.7	2377	11.9	0.4
	Burnley			597	3.8	-5.8	1340	9.6	-1.0	1880	10.6	1.8	
	Chorley	553	2.8	0.3	554	2.5	-10.6	2345	13.1	1.4	2841	11.7	2.7
	East Lancashire	403	1.3										
	Lancaster	47	0.3	-2.0	447	2.3	-9.2	1847	11.5	0.8	2126	10.7	-1.5
Manchester & Cheshire	Bolton	417	2.5	-1.6	876	4.0	-4.1	1269	8.1	-0.9	1790	9.0	-1.4
	Bury			792	6.0	-4.0	1163	10.0	-1.2	1771	11.2	1.8	
	Bury & Rochdale	619	2.4										
	Leighton	381	2.3	-1.6	775	3.9	-6.4	1825	10.3	-0.3	2024	10.6	0.2
	Macclesfield	227	1.7	-1.0	433	2.6	-12.3	1953	14.9	4.8	1697	10.1	-0.4
	Manchester	1453	2.0	-1.3	2802	3.3	-5.6	6515	8.9	-1.0	9450	9.9	-0.6
	Oldham	407	3.7	-1.5	674	5.2	-9.7	1502	14.9	0.7	2459	14.2	1.3
	Rochdale				585	4.4	-4.6	1052	9.0	1.5	1057	7.5	0.8
	Stepping Hill	475	2.1	-2.2	1015	4.2	-6.6	2372	10.8	2.8	1935	8.0	-0.7
	Tameside	374	2.7	-0.8	481	3.5	-4.4	984	7.9	-1.3	1462	9.2	3.0
Merseyside & Cheshire	Aintree	161	0.9	0.0	160	0.9	-11.3	2005	12.2	-0.1	2604	12.3	1.3
	Arrove Park	399	1.9	-0.1	446	2.0	-10.9	2656	12.9	0.4	3081	12.5	2.2
	Chester	609	3.5	-1.3	944	4.8	-7.6	2204	12.4	0.8	2510	11.6	1.7
	Liverpool	1399	7.4	2.4	985	5.0	-10.0	2611	15.0	-0.4	4132	15.4	-1.9
	Southport	154	1.1	0.0	156	1.2	-9.0	1333	10.2	-0.4	1663	10.6	-1.8
	Warrington	310	1.5	-4.0	1457	5.5	-8.8	2620	14.3	3.5	2560	10.8	1.2
	Whiston	236	1.5	-5.4	1249	7.0	-10.9	2630	17.9	2.9	2937	15.0	3.1
	Northern	Carlisle	114	0.5	-0.1	138	0.6	-5.1	1202	5.7	-0.1	1455	5.8
Average			2.2	-1.1		3.4	-7.9		11.3	0.6		10.7	0.6

Source Cervical Screening Programme, England:2006-07 Bulletin: 2007/14/HSCIC Table 19 © 2007, The Information Centre

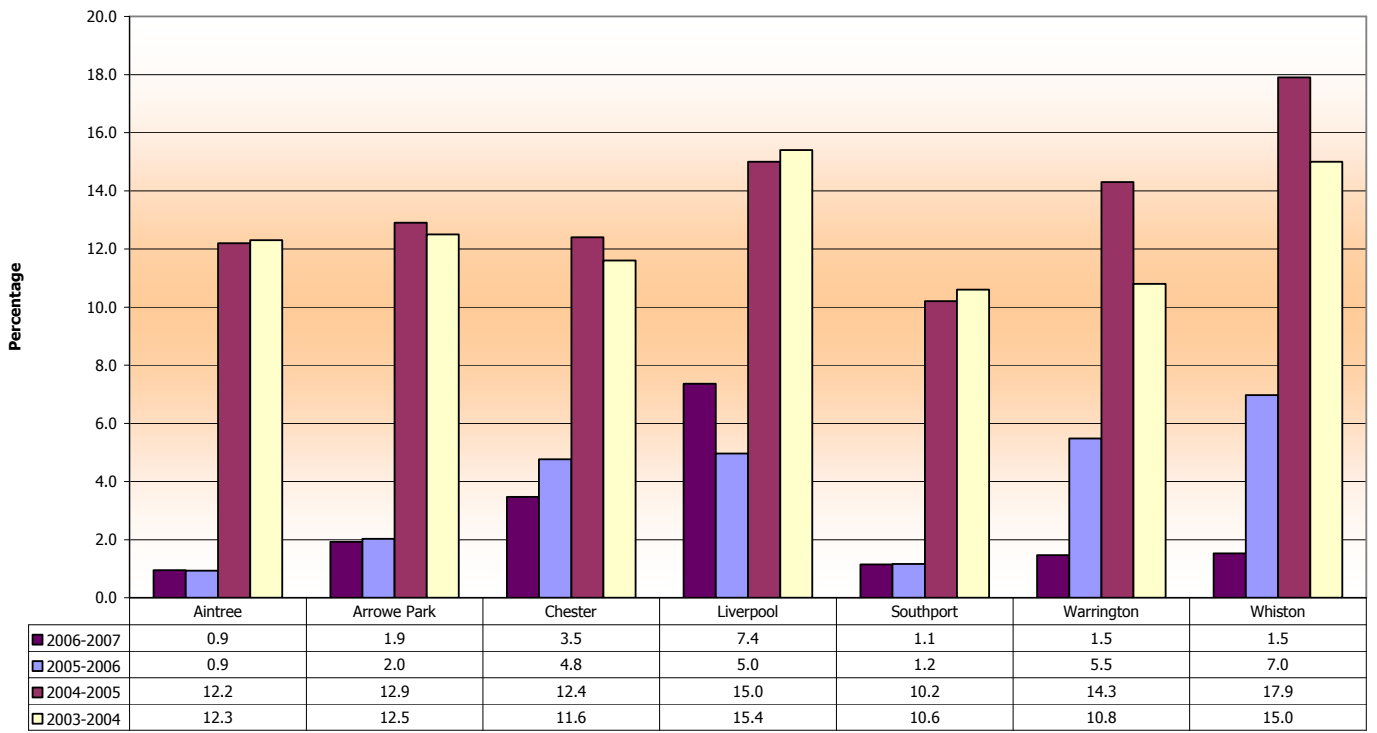
Inadequate Rates by Laboratory 2003-2007 for Greater Manchester & Cheshire Cancer Network



Inadequate Rates by Laboratory 2003-2007 for Lancashire & South Cumbria Cancer Network



Inadequate Rates by Laboratory 2003-2007 for Merseyside & Cheshire Cancer Network



DOH Return KC65

Measuring Colposcopy clinic performance in the North West

1st April 2006 to 31st March 2007

Percentage of all referrals seen within 8 weeks (standard 90%)				
Colposcopy unit by Cancer Network		Apr 06 - Mar 07	Apr 05 - Mar 06	Apr 04 - Mar 05
Lancs & S Cumbria	Blackburn	87	76	68
	Blackpool	88	91	57
	Burnley	90	95	76
	Furness	99	100	100
	Lancaster	96	91	94
	Sharoe Green	99	97	100
	Westmorland	91	89	85
Manchester & Cheshire	Bolton	74	83	82
	Bury	96	91	81
	Central Manchester	93	96	94
	Cumberland House	95	100	100
	Dawes Family Practice**	100	100	100
	Hope Hospital	97	92	77
	Leighton	90	82	93
	Macclesfield	85	86	63
	Monarch Medical Centre**	100	100	92
	North Manchester	96	72	87
	Oldham	100	99	100
	Palatine Centre**	100	100	100
	Rochdale	89	94	73
	Stepping Hill	73	51	37
	Tameside	98	99	98
	Trafford	76	59	53
Wigan	78	72	91	
Withington	81	82	100	
Wythenshawe	99	99	97	
Merseyside & Cheshire	Aintree	100	86	78
	Arrowe Park	100	100	99
	Chester	93	69	86
	Liverpool	97	98	97
	LWH	99	100	99
	Southport & Formby	89	68	83
	Southport & Ormskirk	92	92	72
	Warrington	95	91	81
Whiston	93	97	95	
Northern	Cumberland Infirmary	94	97	96
	West Cumberland		57	49

North West Regional
Average

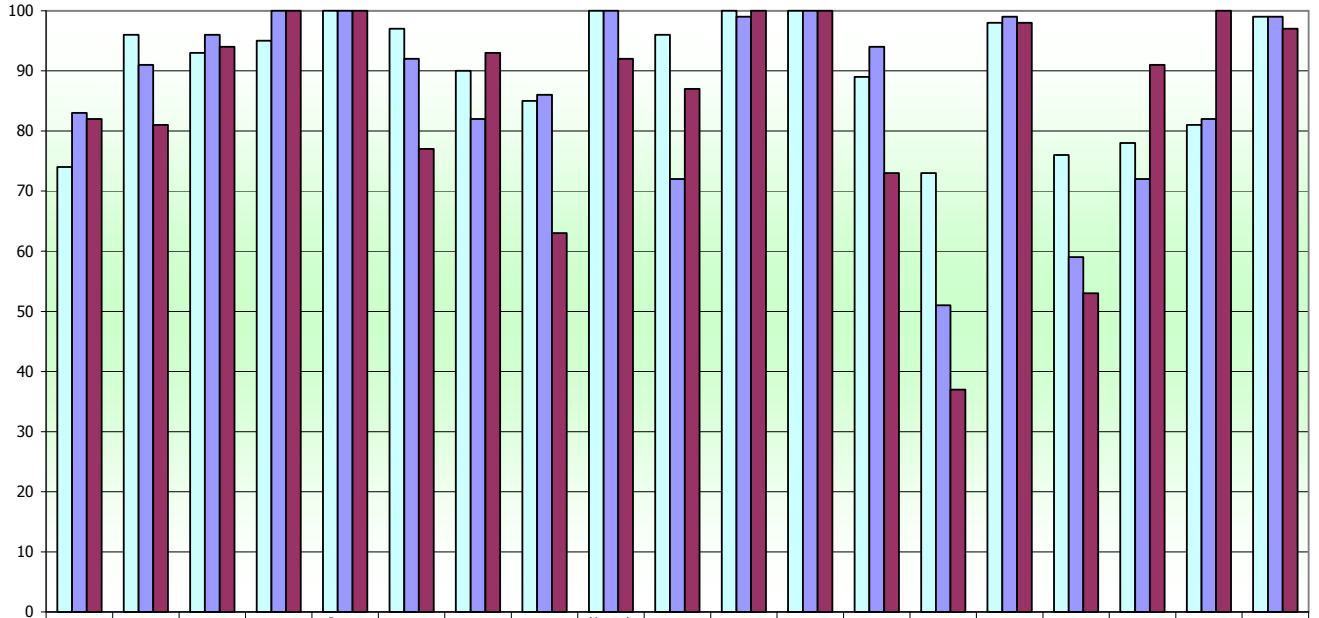
92

88

85

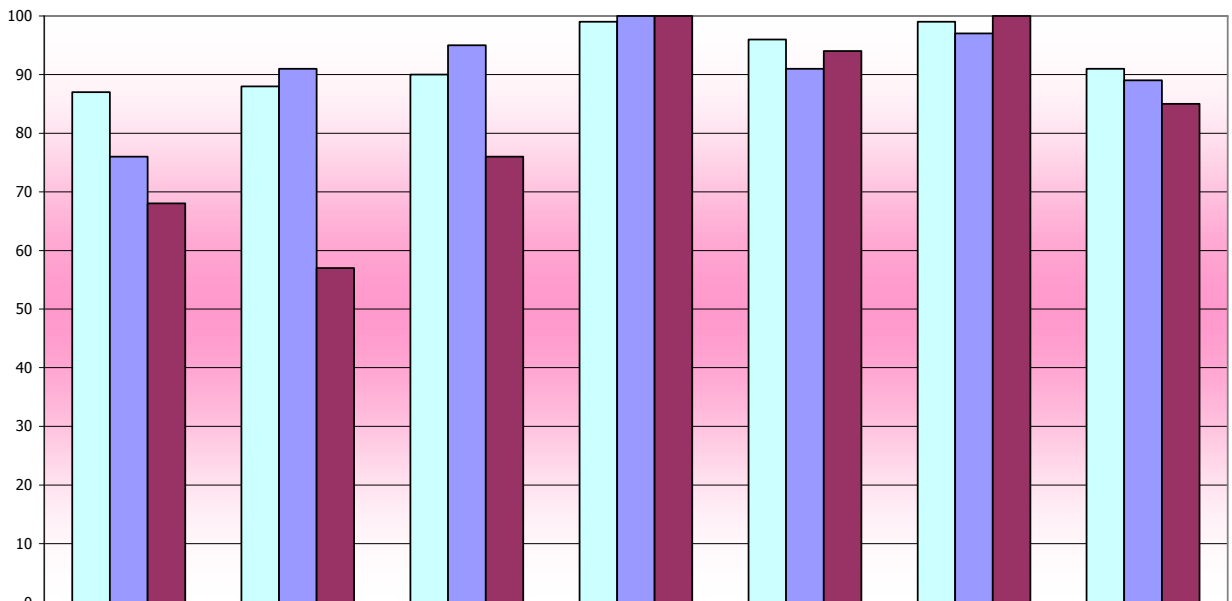
** GP based practices

**Percentage of all referrals seen within 8 weeks (standard 90%) 2004-05 to 2006-07
Greater Manchester & Cheshire Cancer Network**



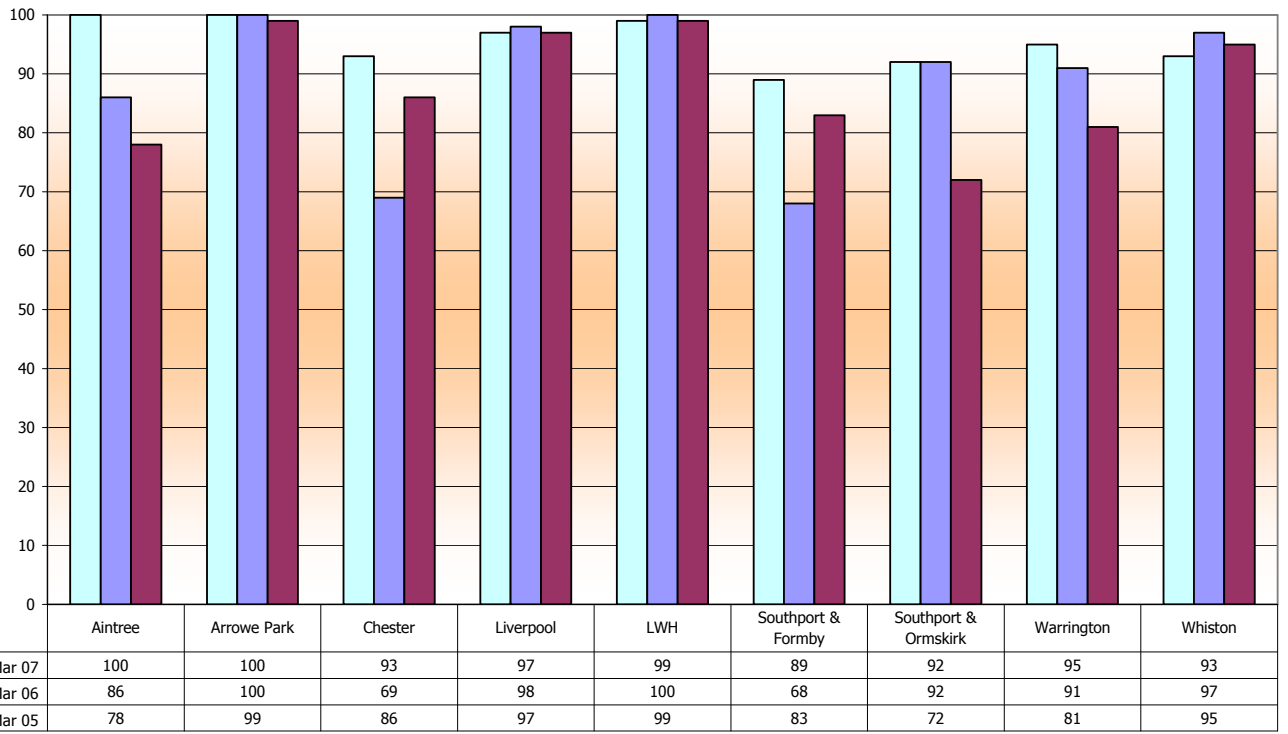
Apr 06 - Mar 07	74	96	93	95	100	97	90	85	100	96	100	100	89	73	98	76	78	81	99
Apr 05 - Mar 06	83	91	96	100	100	92	82	86	100	72	99	100	94	51	99	59	72	82	99
Apr 04 - Mar 05	82	81	94	100	100	77	93	63	92	87	100	100	73	37	98	53	91	100	97

**Percentage of all referrals seen within 8 weeks (standard 90%) 2004-05 to 2006-07
Lancashire & South Cumbria Cancer Network**



Apr 06 - Mar 07	87	88	90	99	96	99	91
Apr 05 - Mar 06	76	91	95	100	91	97	89
Apr 04 - Mar 05	68	57	76	100	94	100	85

**Percentage of all referrals seen within 8 weeks (standard 90%) 2004-05 to 2006-07
Merseyside & Cheshire Cancer Network**



Percentage of moderate & above seen within 4 weeks (standard 90%)				
Colposcopy unit by Cancer Network		Apr 06 - Mar 07	Apr 05 - Mar 06	Apr 04 - Mar 05
Lancs & S Cumbria	Blackburn	64	47	34
	Blackpool	69	76	66
	Burnley	70	75	49
	Furness	98	92	95
	Lancaster	81	76	94
	Sharoe Green	85	87	95
	Westmorland	78	63	47
Manchester & Cheshire	Bolton	48	37	43
	Bury	92	71	48
	Central Manchester	57	72	89
	Cumberland House	64	61	81
	Dawes Family Practice**	94	87	80
	Hope Hospital	59	73	64
	Leighton	85	75	88
	Macclesfield	63	65	44
	Monarch Medical Centre**	66	n/a	100
	North Manchester	82	59	71
	Oldham	97	99	92
	Palatine Centre**	97	100	100
	Rochdale	63	78	48
	Stepping Hill	50	21	25
	Tameside	97	97	97
	Trafford	70	55	49
Wigan	51	26	50	
Withington	47	46	84	
Wythenshawe	93	94	91	
Merseyside & Cheshire	Aintree	96	95	66
	Arrowe Park	98	97	96
	Chester	77	50	53
	Liverpool	85	100	99
	LWH	94	99	99
	Southport & Formby	75	47	39
	Southport & Ormskirk	82	81	50
	Warrington	82	66	53
Whiston	66	79	81	
Northern	Cumberland Infirmary	77	72	72
	West Cumberland		35	11

North West Regional
Average

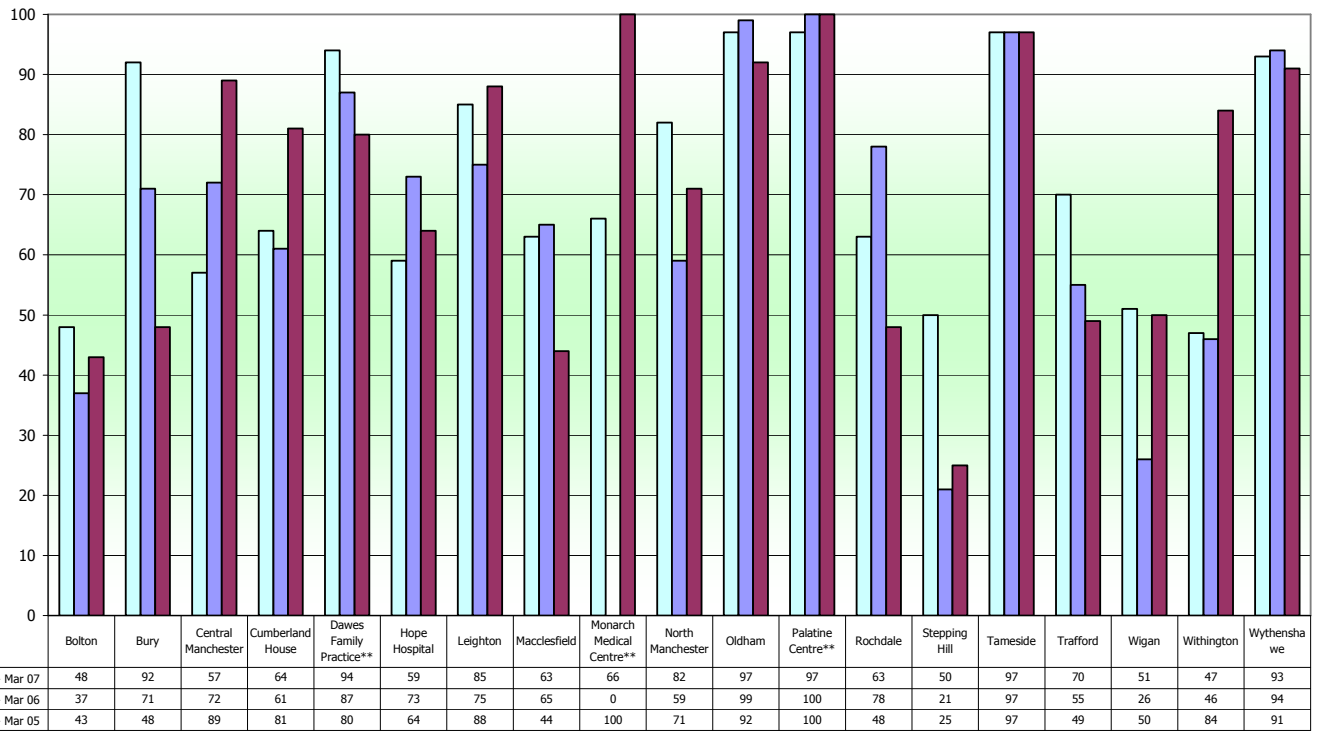
76

71

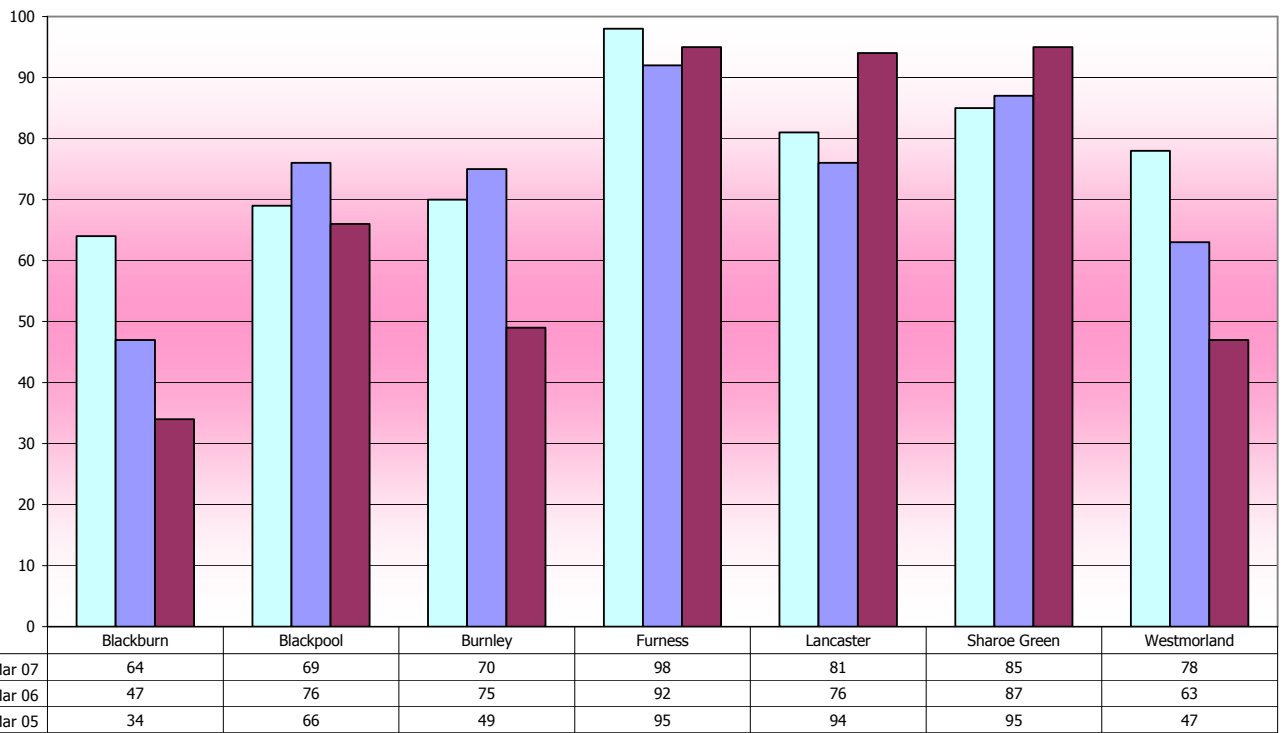
69

** GP based practices

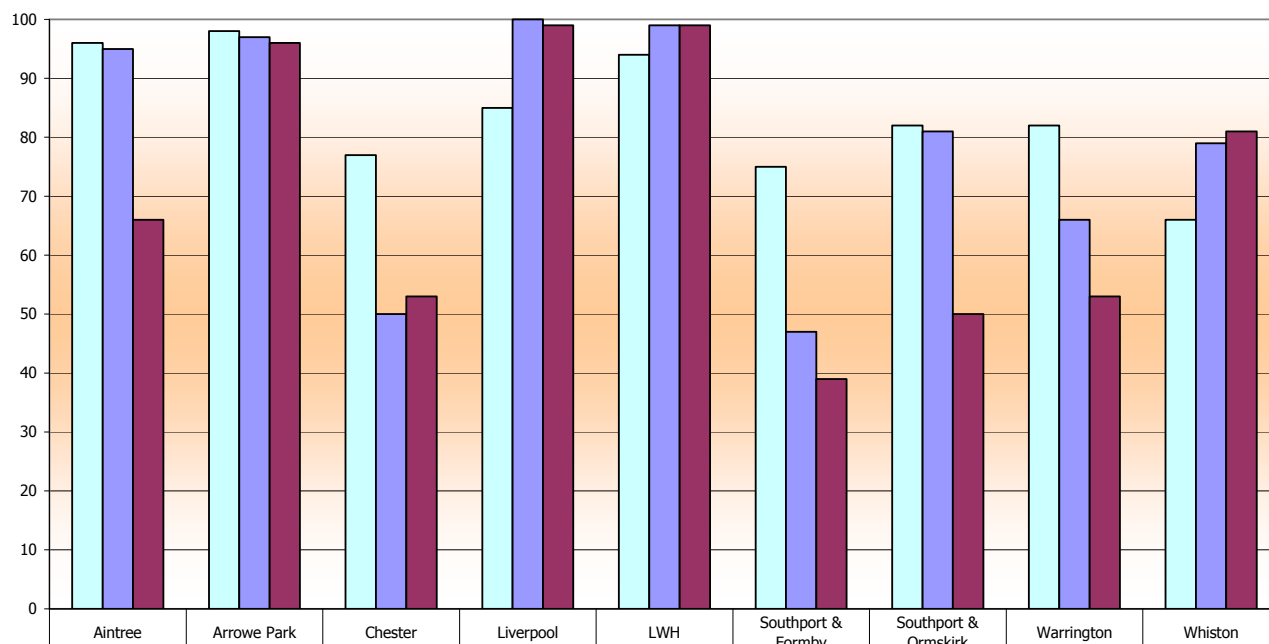
**Percentage of moderate/severe referrals seen within 4 weeks (standard 90%) 2004-05 to 2006-07
Greater Manchester & Cheshire Cancer Network**



**Percentage of moderate/severe referrals seen within 4 weeks (standard 90%) 2004-05 to 2006-07
Lancashire & South Cumbria Cancer Network**



**Percentage of moderate/severe referrals seen within 4 weeks (standard 90%) 2004-05 to 2006-07
Merseyside & Cheshire Cancer Network**

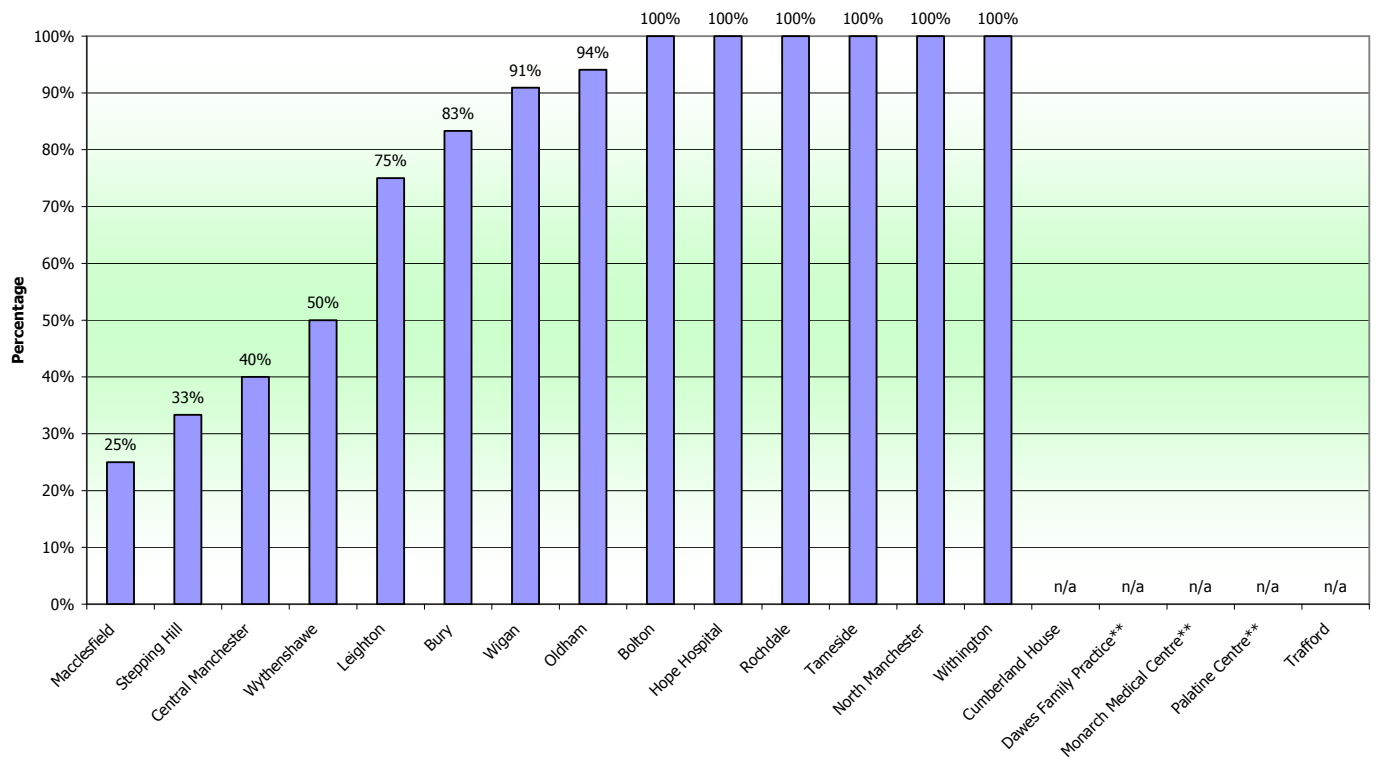


Apr 06 - Mar 07	96	98	77	85	94	75	82	82	66
Apr 05 - Mar 06	95	97	50	100	99	47	81	66	79
Apr 04 - Mar 05	66	96	53	99	99	39	50	53	81

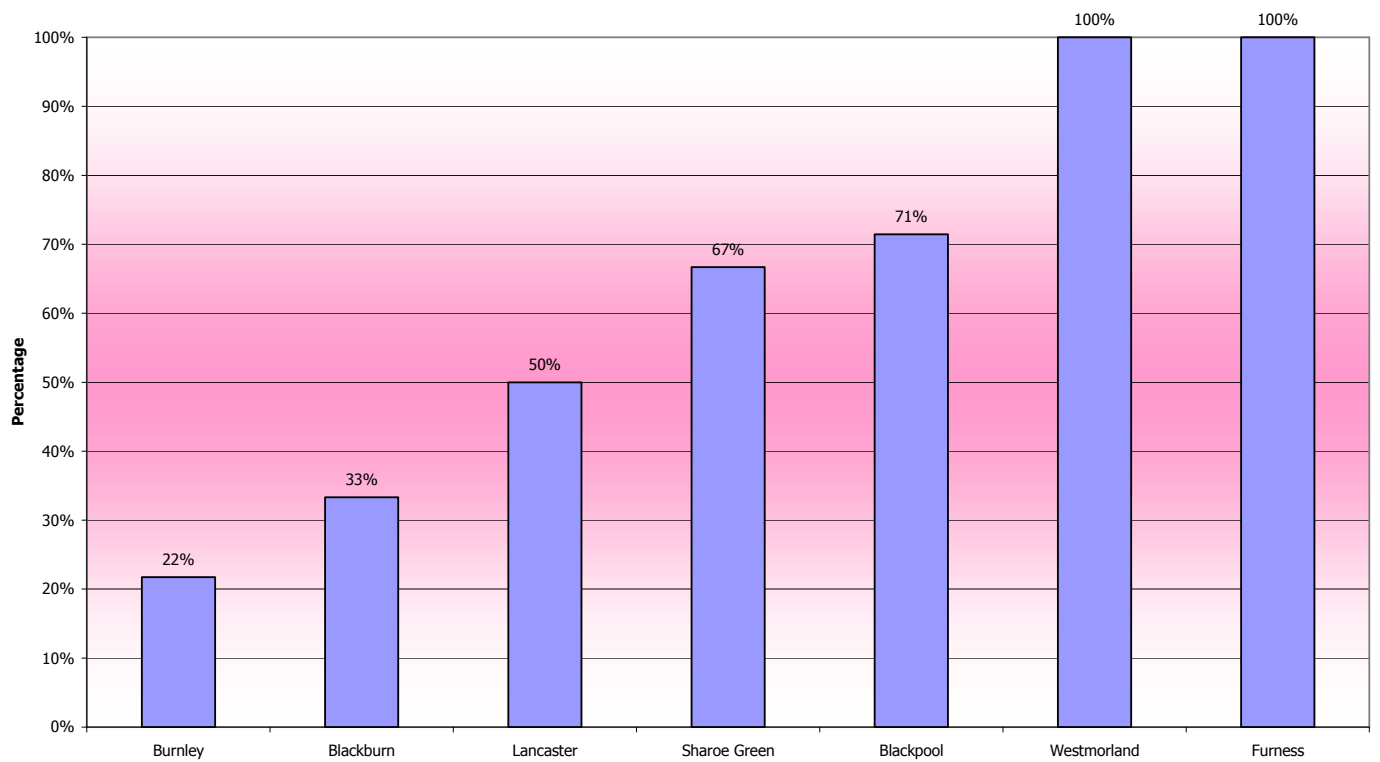
		within 2 weeks			Total			Percentage seen within 2 weeks (standard 90%)
Colposcopy unit by Cancer Network		Severe/? Invasive	Glandular neoplasia	Total	Severe/? Invasive	Glandular neoplasia	Total	Apr 05 - Mar 06
Lancs & S Cumbria	Lancaster	0	2	2	0	4	4	50%
	Burnley	2	3	5	2	21	23	22%
	Blackburn	1	2	3	2	7	9	33%
	Blackpool	2	3	5	2	5	7	71%
	Westmorland	1	0	1	1	0	1	100%
	Sharoe Green	5	9	14	5	16	21	67%
	Furness	0	1	1	0	1	1	100%
Manchester & Cheshire	Cumberland House	0	0	0	0	0	0	n/a
	Dawes Family Practice**	0	0	0	0	0	0	n/a
	Macclesfield	2	0	2	2	6	8	25%
	Monarch Medical Centre**	0	0	0	0	0	0	n/a
	Palatine Centre**	0	0	0	0	0	0	n/a
	Stepping Hill	1	0	1	3	0	3	33%
	Trafford	0	0	0	0	2	2	n/a
	Bolton	2	7	9	2	7	9	100%
	Hope Hospital	1	1	2	1	1	2	100%
	Wigan	3	7	10	3	8	11	91%
	Bury	1	4	5	1	5	6	83%
	Rochdale	0	1	1	0	1	1	100%
	Leighton	2	4	6	3	5	8	75%
	Tameside	1	3	4	1	3	4	100%
	Central Manchester	0	2	2	0	5	5	40%
	North Manchester	0	1	1	0	1	1	100%
	Oldham	4	12	16	4	13	17	94%
Withington	1	1	2	1	1	2	100%	
Wythenshawe	0	1	1	0	2	2	50%	
Merseyside & Cheshire	Liverpool	0	0	0	0	0	0	n/a
	Warrington	1	5	6	2	9	11	55%
	Southport & Formby	1	0	1	1	0	1	100%
	Whiston	1	5	6	1	8	9	67%
	Chester	1	9	10	1	16	17	59%
	Arrowe Park	1	10	11	1	11	12	92%
	Aintree	2	5	7	2	5	7	100%
	LWH	4	7	11	4	11	15	73%
Southport & Ormskirk	0	2	2	0	2	2	100%	
Northern	Cumberland Infirmary	1	6	7	2	13	15	47%

** GP based practices

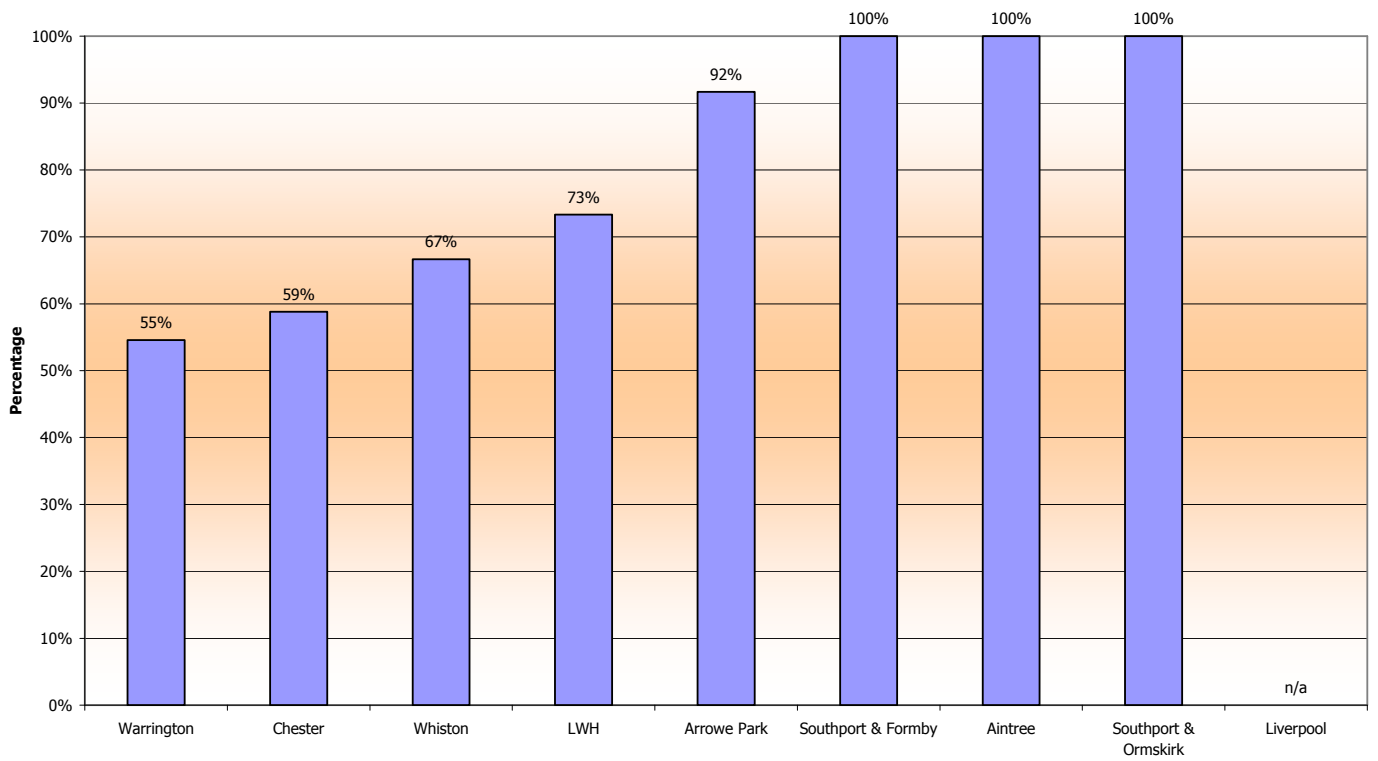
Percentage of all smears reported as possible invasive or glandular neoplasia seen within 2 weeks (standard 90%) for period Apr 06 - Mar 07
Greater Manchester & Cheshire Cancer Network



Percentage of all smears reported as possible invasive or glandular neoplasia seen within 2 weeks (standard 90%) for period Apr 06 - Mar 07
Lancashire & South Cumbria Cancer Network



Percentage of all smears reported as possible invasive or glandular neoplasia seen within 2 weeks (standard 90%) for period Apr 06 - Mar 07
Merseyside & Cheshire Cancer Network



DNA %

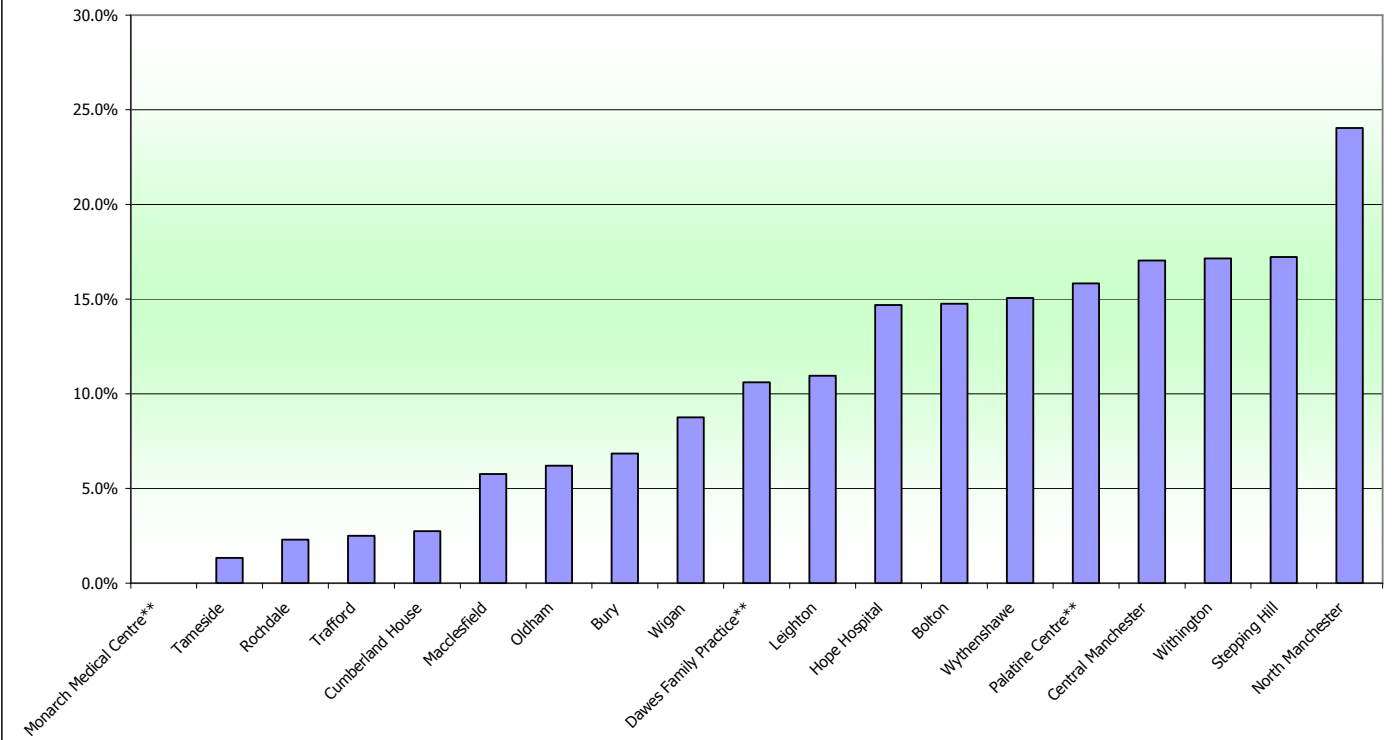
Colposcopy unit by Cancer Network		Apr 05 - Mar 06
Lancs & S Cumbria	Blackpool	not supplied
	Sharoe Green	8.3%
	Lancaster	9.4%
	Blackburn	9.5%
	Westmorland	10.1%
	Furness	13.8%
	Burnley	17.4%
	Monarch Medical Centre**	0.0%
Manchester & Cheshire	Tameside	1.3%
	Rochdale	2.3%
	Trafford	2.5%
	Cumberland House	2.8%
	Macclesfield	5.8%
	Oldham	6.2%
	Bury	6.8%
	Wigan	8.8%
	Dawes Family Practice**	10.6%
	Leighton	11.0%
	Hope Hospital	14.7%
	Bolton	14.8%
	Wythenshawe	15.1%
	Palatine Centre**	15.8%
	Central Manchester	17.0%
	Withington	17.2%
Stepping Hill	17.2%	
North Manchester	24.0%	
Merseyside & Cheshire	Southport & Formby	4.0%
	Southport & Ormskirk	7.4%
	Aintree	8.0%
	Warrington	10.2%
	Arrowe Park	10.2%
	LWH	10.6%
	Chester	11.2%
	Whiston	17.9%
	Liverpool	24.0%
Northern	Cumberland Infirmary	11.5%

NW Average

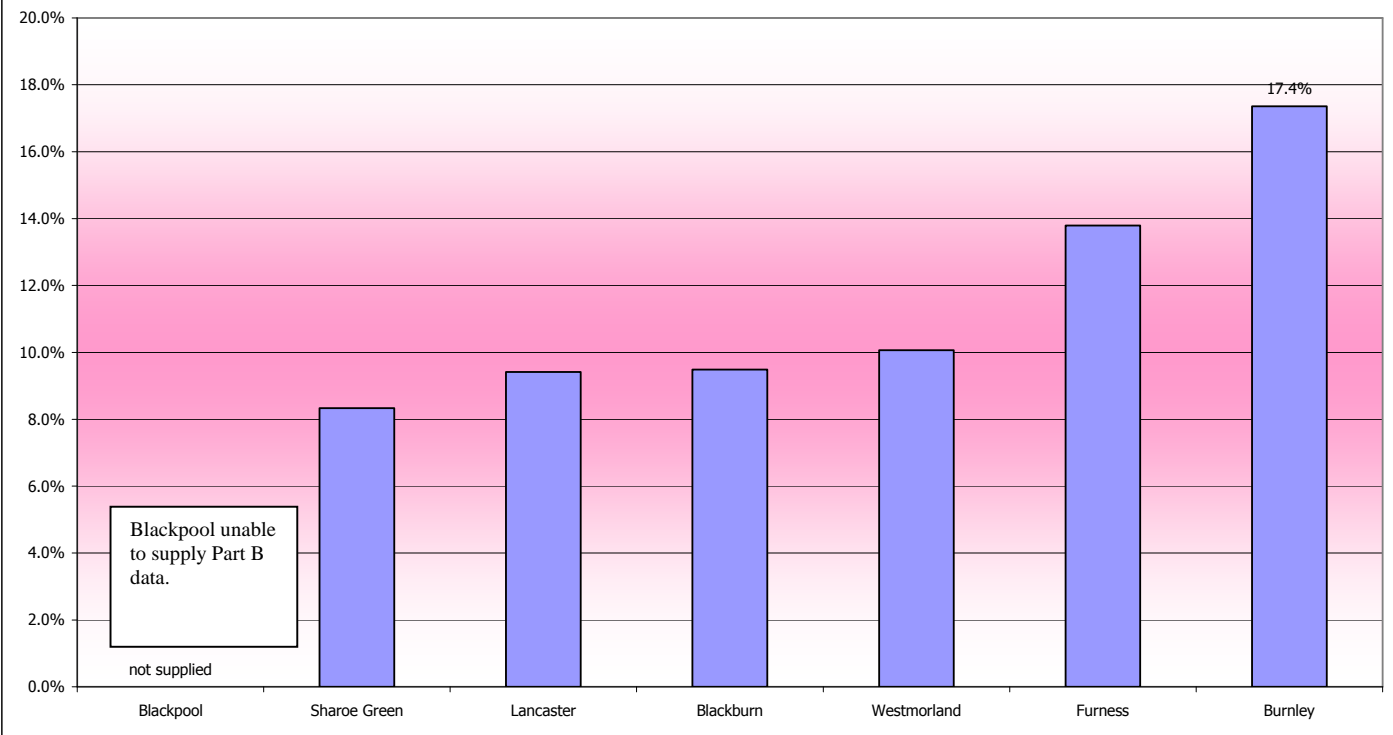
10.8%

** GP based practices

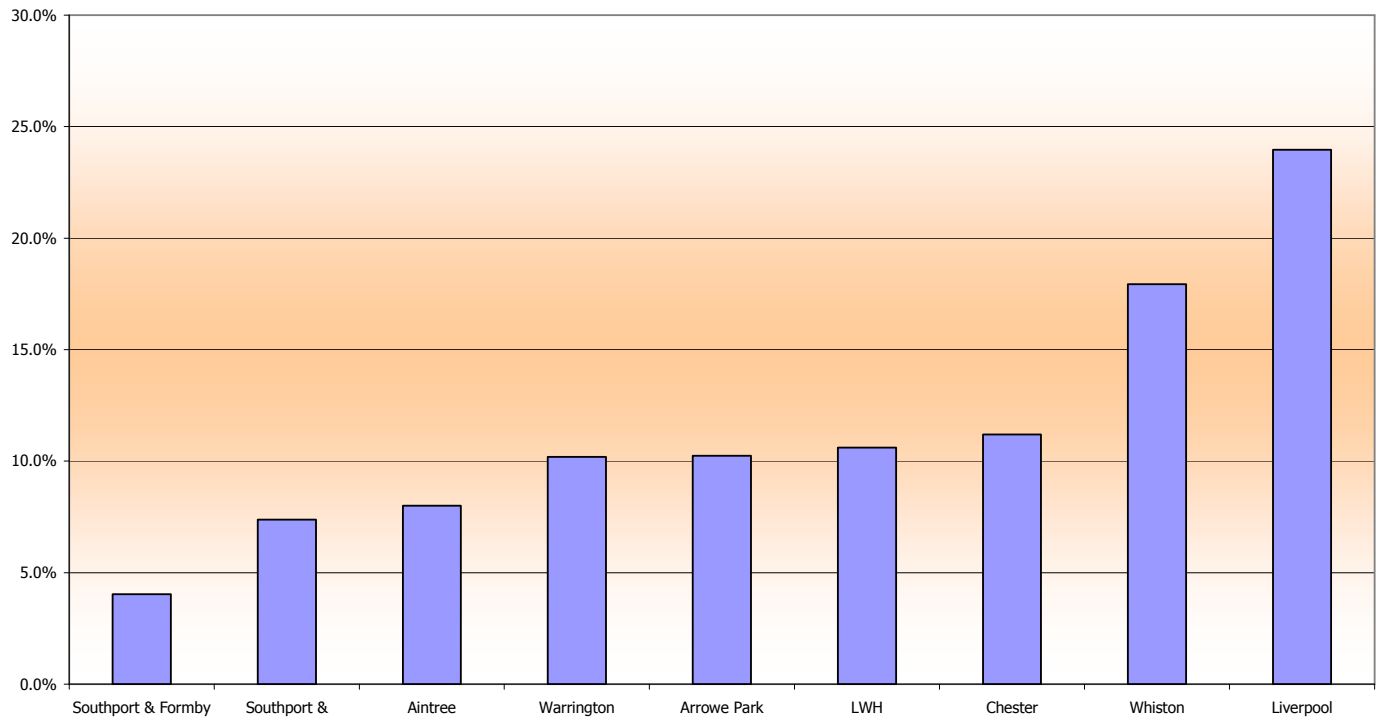
KC65 Part B - DNA % Apr 06 - Mar 07 (standard < 15%)
Greater Manchester & Cheshire Cancer Network



KC65 Part B - DNA % Apr 06 - Mar 07 (standard < 15%)
Lancashire & South Cumbria Cancer Network



KC65 Part B - DNA % Apr 06 - Mar 07 (standard < 15%)
Merseyside & Cheshire Cancer Network



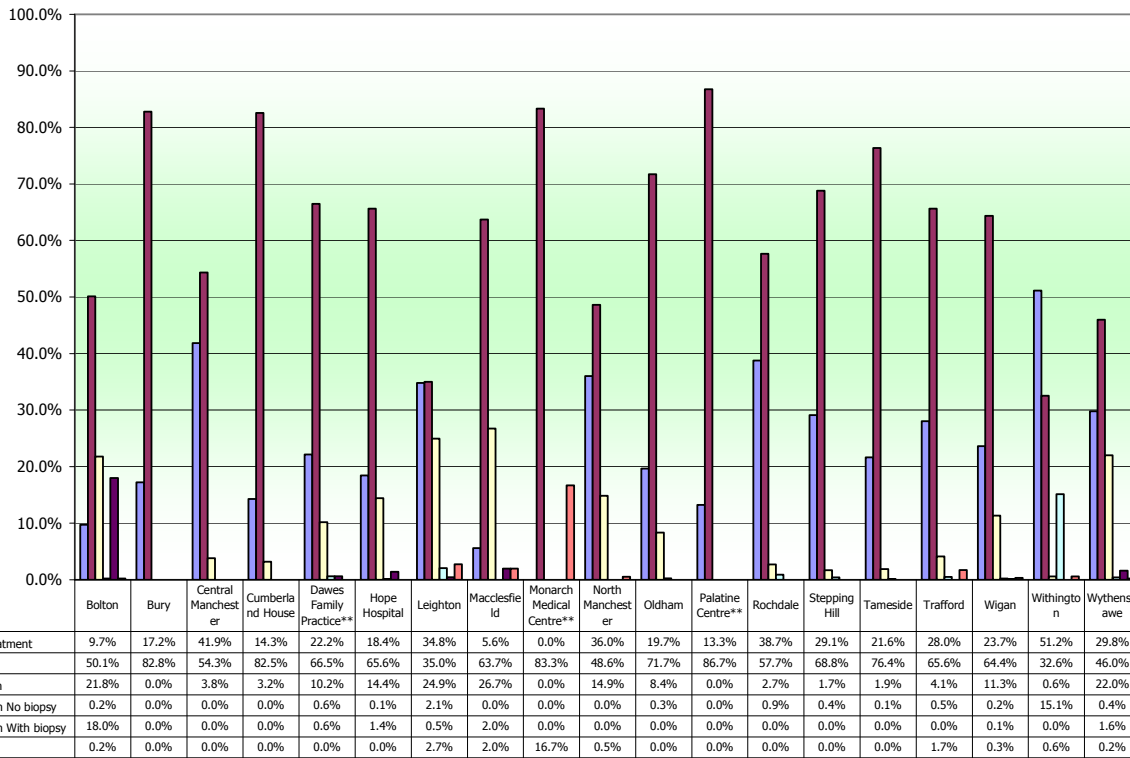
KC65 Part C1 First Attendance – type of procedure

Colposcopy unit by Cancer Network		No Treatment	Diag	Excision	Ablation No biopsy	Ablation With biopsy	Other
Lancs & S Cumbria	Blackburn	26.9%	72.1%	1.0%	0.0%	0.0%	0.0%
	Blackpool	36.6%	25.4%	31.1%	4.0%	0.4%	2.6%
	Burnley	54.0%	36.2%	7.5%	2.2%	0.0%	0.1%
	Furness	18.8%	81.2%	0.0%	0.0%	0.0%	0.0%
	Lancaster	36.7%	62.9%	0.4%	0.0%	0.0%	0.0%
	Sharoe Green	23.3%	57.8%	18.5%	0.3%	0.0%	0.0%
	Westmorland	24.1%	73.7%	1.5%	0.0%	0.0%	0.7%
Manchester & Cheshire	Bolton	9.7%	50.1%	21.8%	0.2%	18.0%	0.2%
	Bury	17.2%	82.8%	0.0%	0.0%	0.0%	0.0%
	Central Manchester	41.9%	54.3%	3.8%	0.0%	0.0%	0.0%
	Cumberland House	14.3%	82.5%	3.2%	0.0%	0.0%	0.0%
	Dawes Family Practice**	22.2%	66.5%	10.2%	0.6%	0.6%	0.0%
	Hope Hospital	18.4%	65.6%	14.4%	0.1%	1.4%	0.0%
	Leighton	34.8%	35.0%	24.9%	2.1%	0.5%	2.7%
	Macclesfield	5.6%	63.7%	26.7%	0.0%	2.0%	2.0%
	Monarch Medical Centre**	0.0%	83.3%	0.0%	0.0%	0.0%	16.7%
	North Manchester	36.0%	48.6%	14.9%	0.0%	0.0%	0.5%
	Oldham	19.7%	71.7%	8.4%	0.3%	0.0%	0.0%
	Palatine Centre**	13.3%	86.7%	0.0%	0.0%	0.0%	0.0%
	Rochdale	38.7%	57.7%	2.7%	0.9%	0.0%	0.0%
	Stepping Hill	29.1%	68.8%	1.7%	0.4%	0.0%	0.0%
	Tameside	21.6%	76.4%	1.9%	0.1%	0.0%	0.0%
	Trafford	28.0%	65.6%	4.1%	0.5%	0.0%	1.7%
Wigan	23.7%	64.4%	11.3%	0.2%	0.1%	0.3%	
Withington	51.2%	32.6%	0.6%	15.1%	0.0%	0.6%	
Wythenshawe	29.8%	46.0%	22.0%	0.4%	1.6%	0.2%	
Merseyside & Cheshire	Aintree	63.4%	23.1%	10.7%	1.7%	0.0%	1.1%
	Arroe Park	45.2%	33.5%	16.4%	0.3%	2.9%	1.6%
	Chester	25.7%	57.8%	15.4%	0.6%	0.4%	0.1%
	Liverpool	22.8%	55.6%	12.1%	0.0%	0.0%	9.5%
	LWH	61.0%	22.7%	11.2%	1.3%	0.4%	3.5%
	Southport & Formby	22.5%	76.3%	0.9%	0.3%	0.0%	0.0%
	Southport & Ormskirk	18.3%	79.3%	0.9%	1.5%	0.0%	0.0%
	Warrington	49.6%	39.4%	9.9%	0.6%	0.0%	0.5%
Whiston	25.3%	59.8%	9.9%	0.3%	0.0%	4.7%	
Northern	Cumberland Infirmary	13.6%	49.6%	35.0%	1.3%	0.0%	0.5%

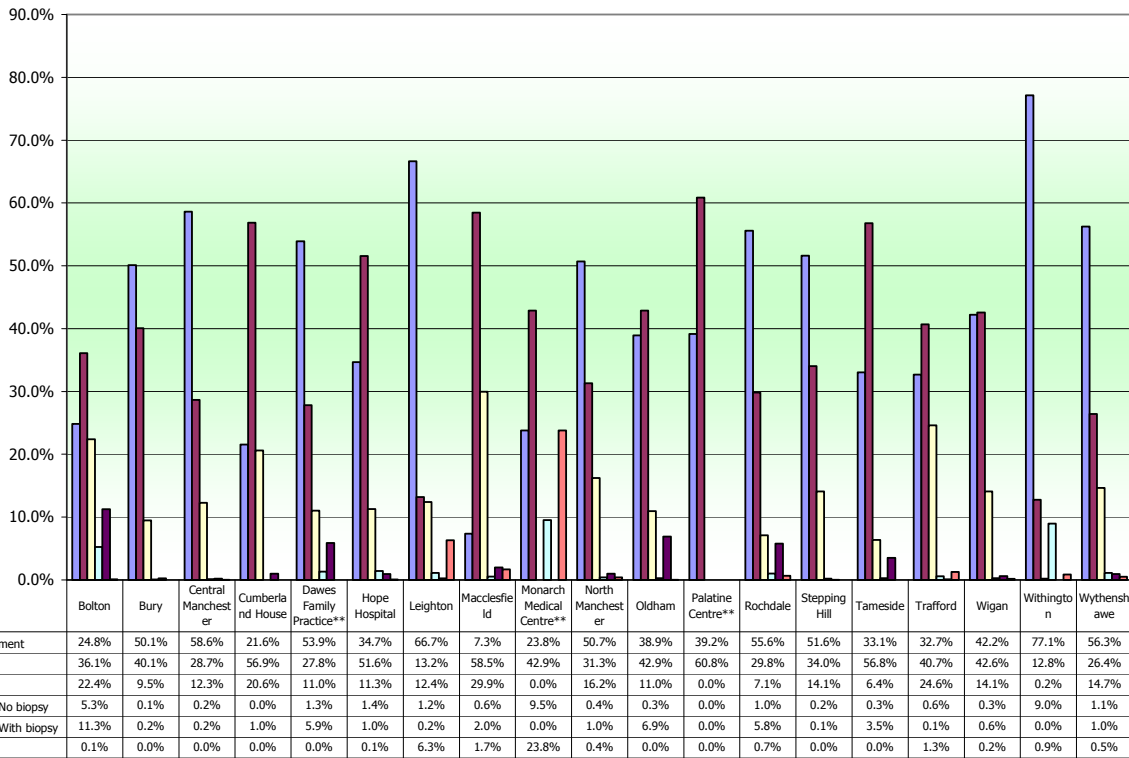
KC65 Part C2 All Attendance – type of procedure

Colposcopy unit by Cancer Network		No Treatment	Diag	Excision	Ablation No biopsy	Ablation With biopsy	Other
Lancs & S Cumbria	Blackburn	43.7%	38.9%	17.3%	0.0%	0.1%	0.0%
	Blackpool	68.9%	10.3%	15.2%	3.0%	1.6%	1.0%
	Burnley	61.9%	21.9%	8.2%	2.1%	5.9%	0.1%
	Furness	48.6%	37.8%	11.8%	0.2%	1.7%	0.0%
	Lancaster	53.3%	32.1%	14.7%	0.0%	0.0%	0.0%
	Sharoe Green	51.2%	29.1%	13.6%	0.5%	5.5%	0.0%
	Westmorland	56.3%	29.0%	14.5%	0.0%	0.0%	0.2%
Manchester & Cheshire	Bolton	24.8%	36.1%	22.4%	5.3%	11.3%	0.1%
	Bury	50.1%	40.1%	9.5%	0.1%	0.2%	0.0%
	Central Manchester	58.6%	28.7%	12.3%	0.2%	0.2%	0.0%
	Cumberland House	21.6%	56.9%	20.6%	0.0%	1.0%	0.0%
	Dawes Family Practice**	53.9%	27.8%	11.0%	1.3%	5.9%	0.0%
	Hope Hospital	34.7%	51.6%	11.3%	1.4%	1.0%	0.1%
	Leighton	66.7%	13.2%	12.4%	1.2%	0.2%	6.3%
	Macclesfield	7.3%	58.5%	29.9%	0.6%	2.0%	1.7%
	Monarch Medical Centre**	23.8%	42.9%	0.0%	9.5%	0.0%	23.8%
	North Manchester	50.7%	31.3%	16.2%	0.4%	1.0%	0.4%
	Oldham	38.9%	42.9%	11.0%	0.3%	6.9%	0.0%
	Palatine Centre**	39.2%	60.8%	0.0%	0.0%	0.0%	0.0%
	Rochdale	55.6%	29.8%	7.1%	1.0%	5.8%	0.7%
	Stepping Hill	51.6%	34.0%	14.1%	0.2%	0.1%	0.0%
	Tameside	33.1%	56.8%	6.4%	0.3%	3.5%	0.0%
	Trafford	32.7%	40.7%	24.6%	0.6%	0.1%	1.3%
	Wigan	42.2%	42.6%	14.1%	0.3%	0.6%	0.2%
Withington	77.1%	12.8%	0.2%	9.0%	0.0%	0.9%	
Wythenshawe	56.3%	26.4%	14.7%	1.1%	1.0%	0.5%	
Merseyside & Cheshire	Aintree	68.6%	14.2%	10.7%	1.2%	4.6%	0.8%
	Arrowe Park	64.7%	18.8%	12.3%	1.4%	1.8%	0.9%
	Chester	45.3%	33.6%	18.8%	2.0%	0.4%	0.0%
	Liverpool	21.4%	40.0%	17.0%	0.0%	0.0%	21.5%
	LWH	73.7%	11.9%	8.8%	1.7%	2.2%	1.7%
	Southport & Formby	47.9%	36.4%	11.3%	0.7%	3.8%	0.0%
	Southport & Ormskirk	45.1%	36.1%	10.9%	2.2%	5.6%	0.0%
	Warrington	64.3%	23.4%	11.3%	0.4%	0.1%	0.6%
	Whiston	63.4%	24.9%	7.1%	0.6%	2.2%	1.7%
Northern	Cumberland Infirmary	37.6%	37.0%	24.4%	0.7%	0.0%	0.3%

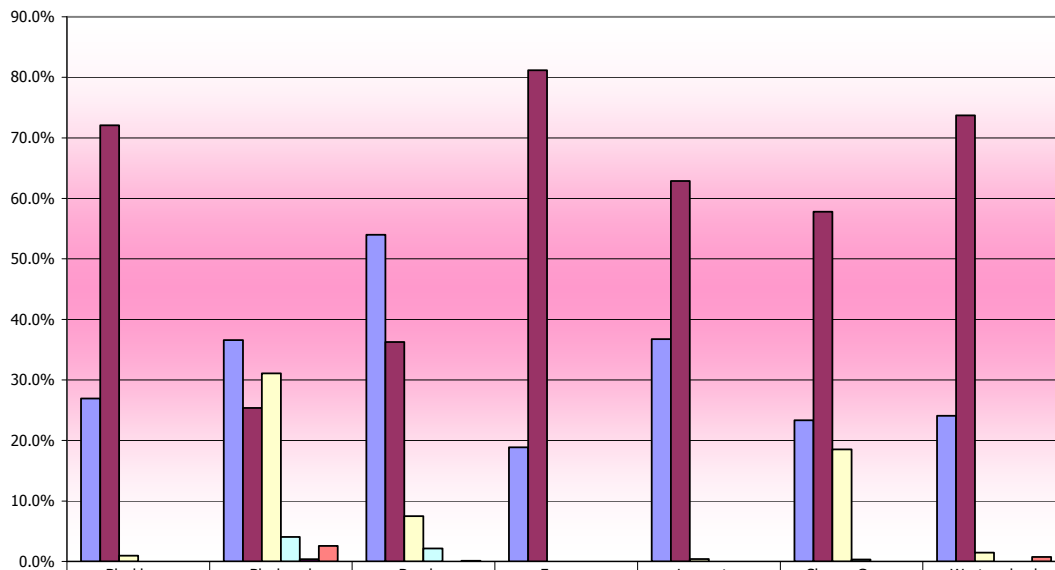
KC65 Part C1 - First attendance - Type of procedure (%) 2006-2007
Greater Manchester & Cheshire Cancer Network



KC65 Part C2 - All attendance - Type of procedure (%) 2006-2007
Greater Manchester & Cheshire Cancer Network

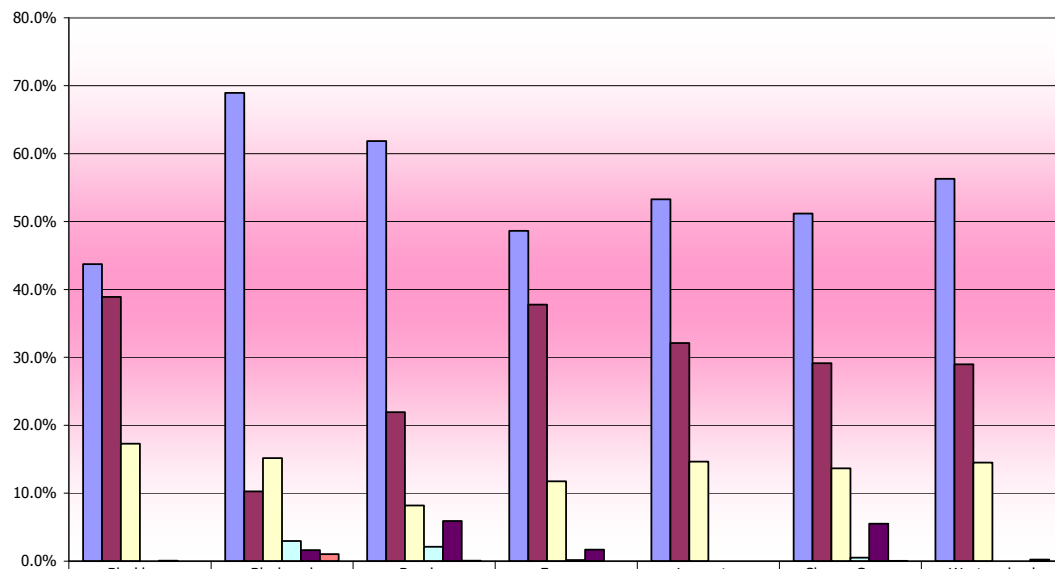


**KC65 Part C1 - First attendance - Type of procedure (%) 2006-2007
Lancashire & South Cumbria Cancer Network**



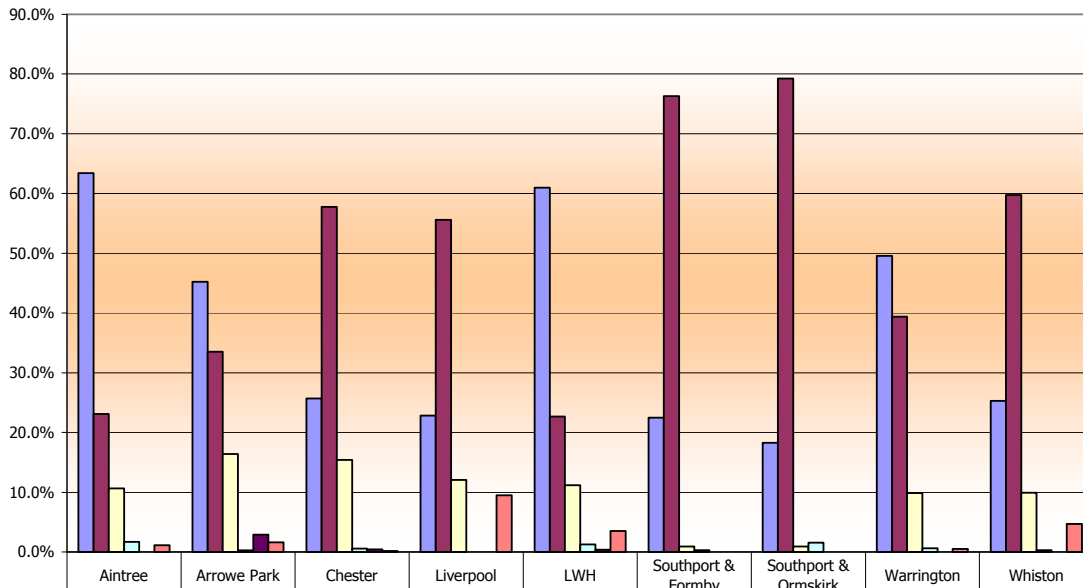
	Blackburn	Blackpool	Burnley	Furness	Lancaster	Sharoe Green	Westmorland
No Treatment	26.9%	36.6%	54.0%	18.8%	36.7%	23.3%	24.1%
Diag	72.1%	25.4%	36.2%	81.2%	62.9%	57.8%	73.7%
Excision	1.0%	31.1%	7.5%	0.0%	0.4%	18.5%	1.5%
Ablation No biopsy	0.0%	4.0%	2.2%	0.0%	0.0%	0.3%	0.0%
Ablation With biopsy	0.0%	0.4%	0.0%	0.0%	0.0%	0.0%	0.0%
Other	0.0%	2.6%	0.1%	0.0%	0.0%	0.0%	0.7%

**KC65 Part C2 - All attendance - Type of procedure (%) 2006-2007
Lancashire & South Cumbria Cancer Network**



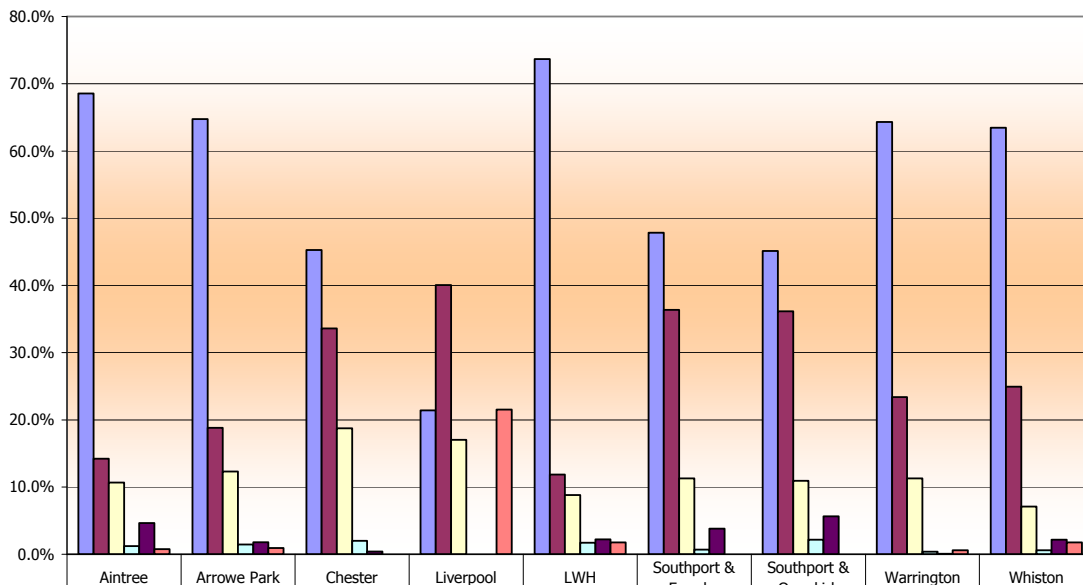
	Blackburn	Blackpool	Burnley	Furness	Lancaster	Sharoe Green	Westmorland
No Treatment	43.7%	68.9%	61.9%	48.6%	53.3%	51.2%	56.3%
Diag	38.9%	10.3%	21.9%	37.8%	32.1%	29.1%	29.0%
Excision	17.3%	15.2%	8.2%	11.8%	14.7%	13.6%	14.5%
Ablation No biopsy	0.0%	3.0%	2.1%	0.2%	0.0%	0.5%	0.0%
Ablation With biopsy	0.1%	1.6%	5.9%	1.7%	0.0%	5.5%	0.0%
Other	0.0%	1.0%	0.1%	0.0%	0.0%	0.0%	0.2%

KC65 Part C1 - First attendance - Type of procedure (%) 2006-2007
Merseyside & Cheshire Cancer Network



	Aintree	Arrowe Park	Chester	Liverpool	LWH	Southport & Formby	Southport & Ormskirk	Warrington	Whiston
No Treatment	63.4%	45.2%	25.7%	22.8%	61.0%	22.5%	18.3%	49.6%	25.3%
Diag	23.1%	33.5%	57.8%	55.6%	22.7%	76.3%	79.3%	39.4%	59.8%
Excision	10.7%	16.4%	15.4%	12.1%	11.2%	0.9%	0.9%	9.9%	9.9%
Ablation No biopsy	1.7%	0.3%	0.6%	0.0%	1.3%	0.3%	1.5%	0.6%	0.3%
Ablation With biopsy	0.0%	2.9%	0.4%	0.0%	0.4%	0.0%	0.0%	0.0%	0.0%
Other	1.1%	1.6%	0.1%	9.5%	3.5%	0.0%	0.0%	0.5%	4.7%

KC65 Part C2 - All attendance - Type of procedure (%) 2006-2007
Merseyside & Cheshire Cancer Network

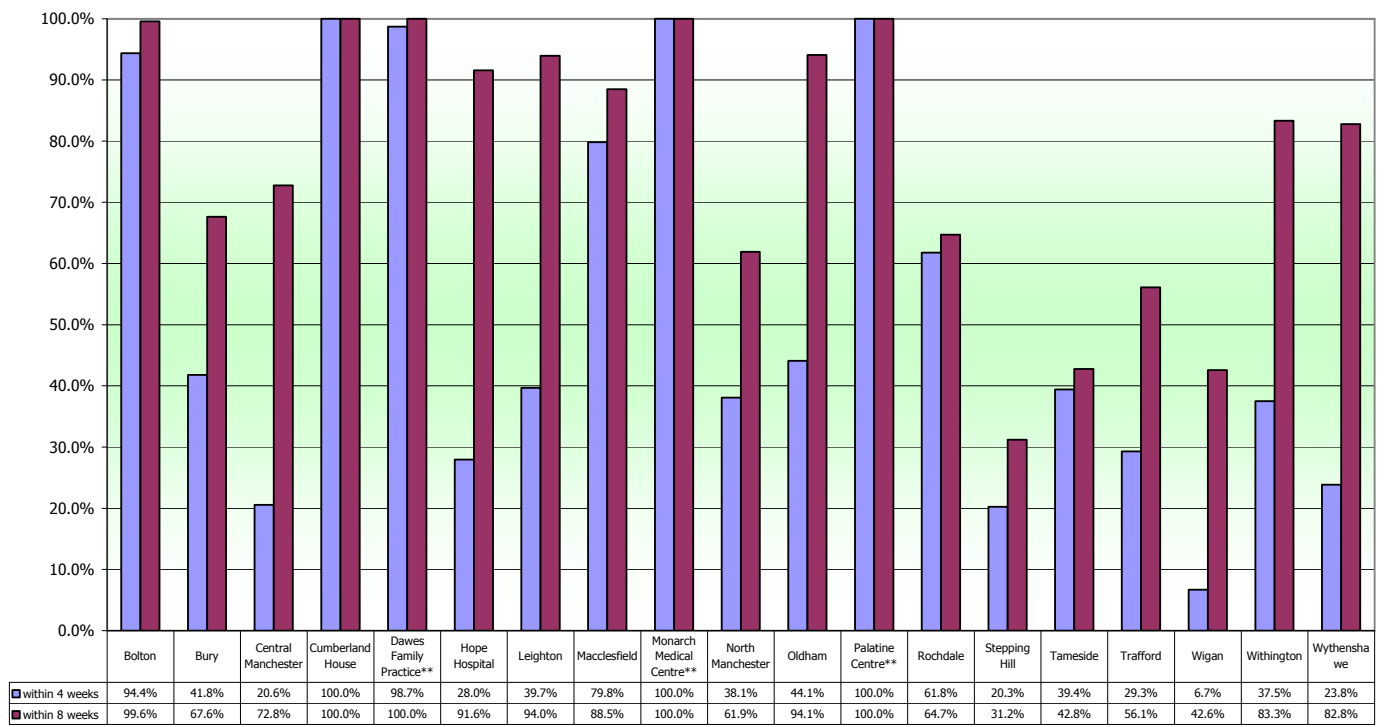


	Aintree	Arrowe Park	Chester	Liverpool	LWH	Southport & Formby	Southport & Ormskirk	Warrington	Whiston
No Treatment	68.6%	64.7%	45.3%	21.4%	73.7%	47.9%	45.1%	64.3%	63.4%
Diag	14.2%	18.8%	33.6%	40.0%	11.9%	36.4%	36.1%	23.4%	24.9%
Excision	10.7%	12.3%	18.8%	17.0%	8.8%	11.3%	10.9%	11.3%	7.1%
Ablation No biopsy	1.2%	1.4%	2.0%	0.0%	1.7%	0.7%	2.2%	0.4%	0.6%
Ablation With biopsy	4.6%	1.8%	0.4%	0.0%	2.2%	3.8%	5.6%	0.1%	2.2%
Other	0.8%	0.9%	0.0%	21.5%	1.7%	0.0%	0.0%	0.6%	1.7%

KC65 Part D Time from biopsy to informing patient (1st month of each quarter). Best practice 90% within 4 weeks. Standard 100% within 8 weeks.

Colposcopy unit by Cancer Network		Within 4 weeks	Within 8 weeks
Lancs & S Cumbria	Blackburn	37.4%	63.5%
	Blackpool	58.9%	88.9%
	Burnley	69.4%	85.0%
	Furness	100.0%	100.0%
	Lancaster	83.3%	92.9%
	Sharoe Green	98.7%	100.0%
	Westmorland	29.4%	33.3%
Manchester & Cheshire	Bolton	94.4%	99.6%
	Bury	41.8%	67.6%
	Central Manchester	20.6%	72.8%
	Cumberland House	100.0%	100.0%
	Dawes Family Practice**	98.7%	100.0%
	Hope Hospital	28.0%	91.6%
	Leighton	39.7%	94.0%
	Macclesfield	79.8%	88.5%
	Monarch Medical Centre**	100.0%	100.0%
	North Manchester	38.1%	61.9%
	Oldham	44.1%	94.1%
	Palatine Centre**	100.0%	100.0%
	Rochdale	61.8%	64.7%
	Stepping Hill	20.3%	31.2%
	Tameside	39.4%	42.8%
	Trafford	29.3%	56.1%
	Wigan	6.7%	42.6%
Withington	37.5%	83.3%	
Wythenshawe	23.8%	82.8%	
Merseyside & Cheshire	Aintree	98.2%	100.0%
	Arrowe Park	82.3%	93.2%
	Chester	97.5%	100.0%
	Liverpool	67.7%	90.3%
	LWH	61.4%	98.8%
	Southport & Formby	86.6%	97.3%
	Southport & Ormskirk	89.9%	96.4%
	Warrington	89.8%	95.3%
	Whiston	39.0%	92.2%
Northern	Cumberland Infirmary	58.3%	90.5%

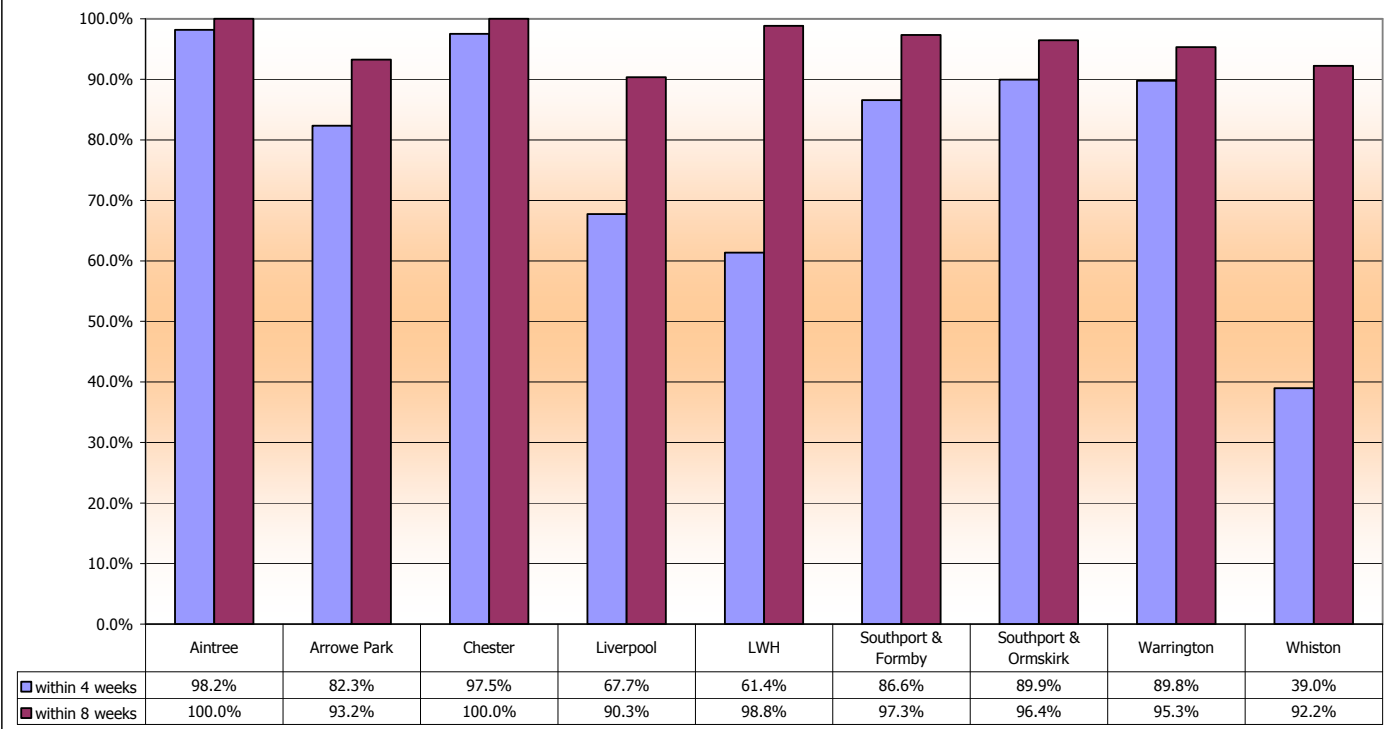
KC65 Part D - Time from biopsy to informing patient (1st month of each quarter) Best practice 90% within 4 weeks, Standard 100% within 8 weeks
Greater Manchester & Cheshire Cancer Network



KC65 Part D - Time from biopsy to informing patient (1st month of each quarter) Best practice 90% within 4 weeks, Standard 100% within 8 weeks
Lancashire & South Cumbria Cancer Network



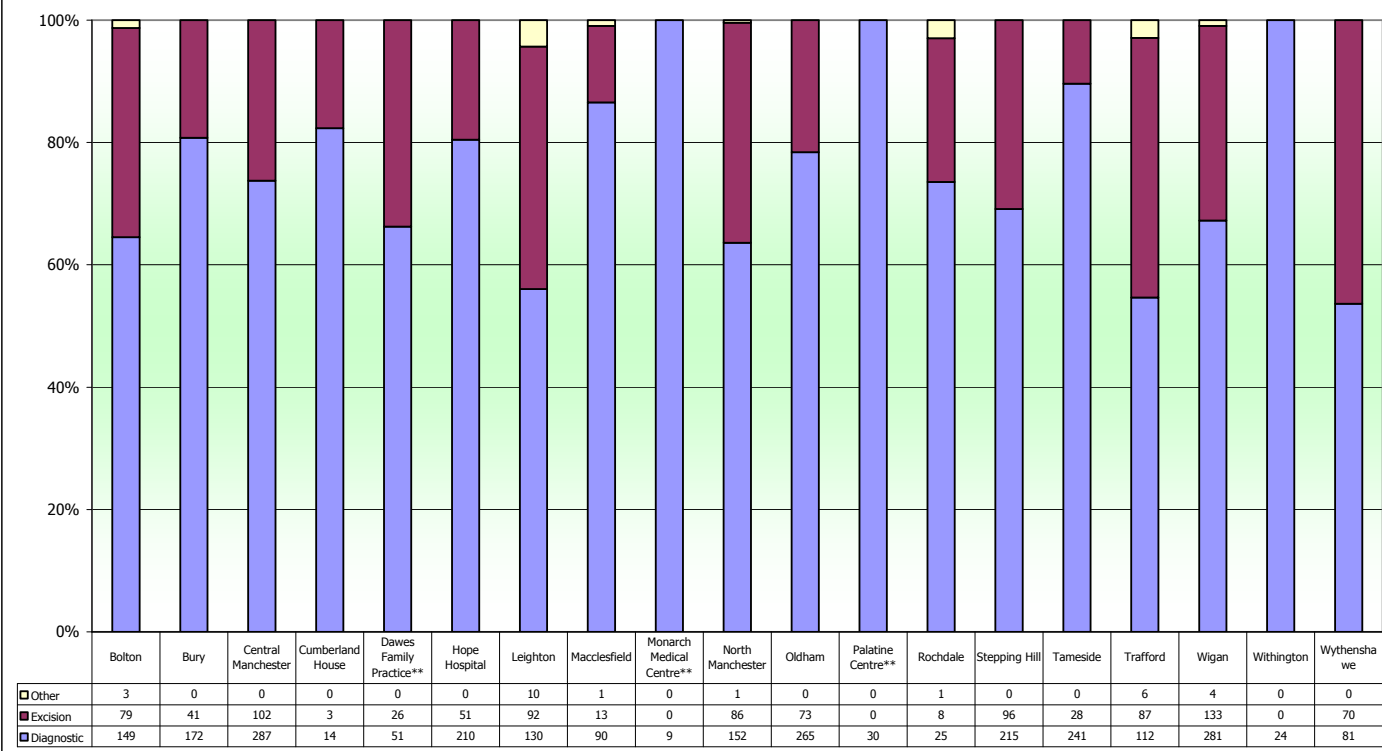
KC65 Part D - Time from biopsy to informing patient (1st month of each quarter) Best practice 90% within 4 weeks, Standard 100% within 8 weeks
Merseyside & Cheshire Cancer Network



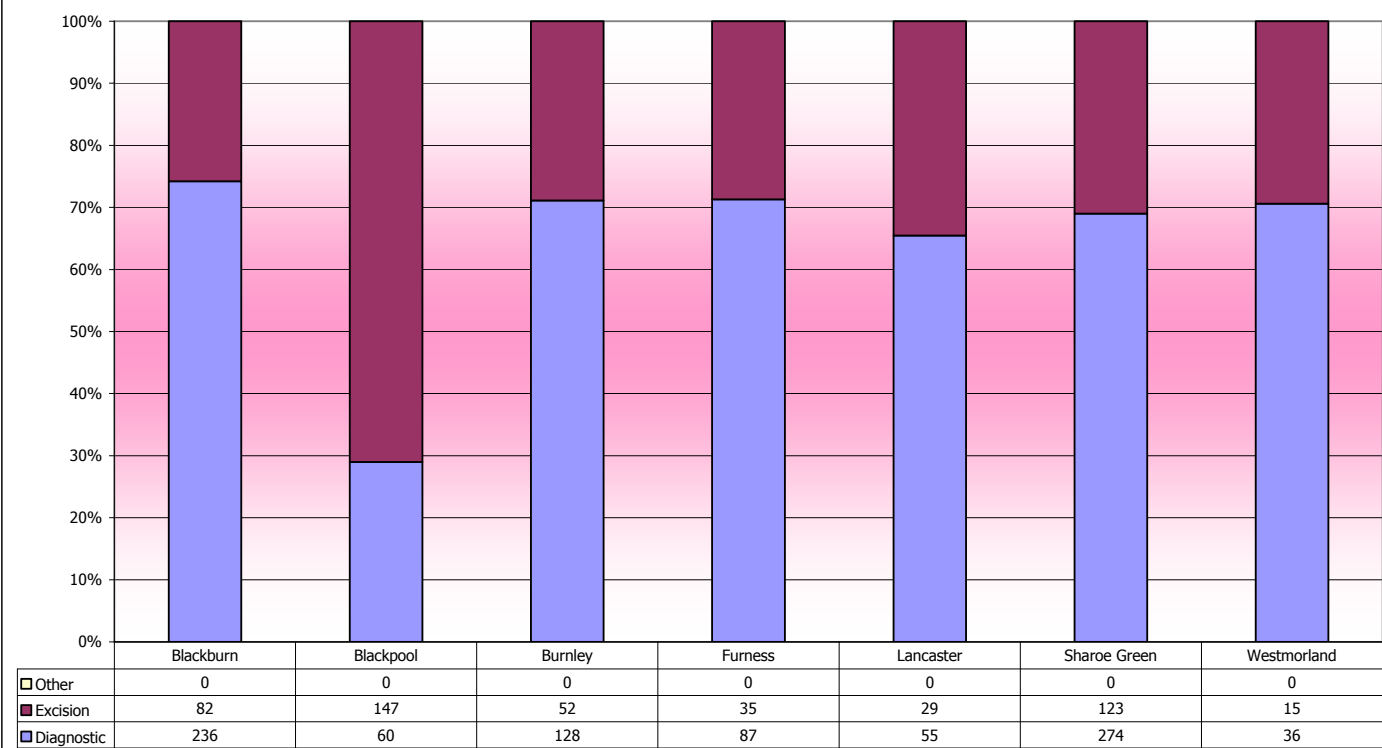
KC65 Part E All outcomes by biopsy time 1st month of each quarter

Colposcopy unit by Cancer Network		Diagnostic	Excision	Other
Lancs & S Cumbria	Blackburn	236	82	0
	Blackpool	60	147	0
	Burnley	128	52	0
	Furness	87	35	0
	Lancaster	55	29	0
	Sharoe Green	274	123	0
	Westmorland	36	15	0
Manchester & Cheshire	Bolton	149	79	3
	Bury	172	41	0
	Central Manchester	287	102	0
	Cumberland House	14	3	0
	Dawes Family Practice**	51	26	0
	Hope Hospital	210	51	0
	Leighton	130	92	10
	Macclesfield	90	13	1
	Monarch Medical Centre**	9	0	0
	North Manchester	152	86	1
	Oldham	265	73	0
	Palatine Centre**	30	0	0
	Rochdale	25	8	1
	Stepping Hill	215	96	0
	Tameside	241	28	0
	Trafford	112	87	6
	Wigan	281	133	4
Withington	24	0	0	
Wythenshawe	81	70	0	
Merseyside & Cheshire	Aintree	125	91	2
	Arrowe Park	166	99	1
	Chester	199	84	1
	Liverpool	118	37	0
	LWH	135	100	16
	Southport & Formby	117	32	0
	Southport & Ormskirk	117	52	0
	Warrington	229	129	3
	Whiston	243	91	25
Northern	Cumberland Infirmary	219	131	8

**KC65 Part E All outcomes by biopsy type 1st month of each quarter
Greater Manchester & Cheshire Cancer Network**



**KC65 Part E All outcomes by biopsy type 1st month of each quarter
Lancashire & South Cumbria Cancer Network**



KC65 Part E All outcomes by biopsy type 1st month of each quarter
Merseyside & Cheshire Cancer Network

