



INFORMATION SUMMARY

BY CANCER NETWORK

1 Apr 07 to 31 Mar 08

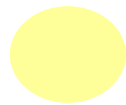
Produced by
North West Cervical Screening
Quality Assurance Reference Centre
Liverpool Women's Hospital
Crown Street Liverpool L8 7SS
www.nwcsqarc.org.uk



CANCER NETWORK KEY



Northern Cancer Network



Lancashire & South Cumbria Cancer Network



Greater Manchester & Cheshire Cancer Network



Merseyside & Cheshire Cancer Network

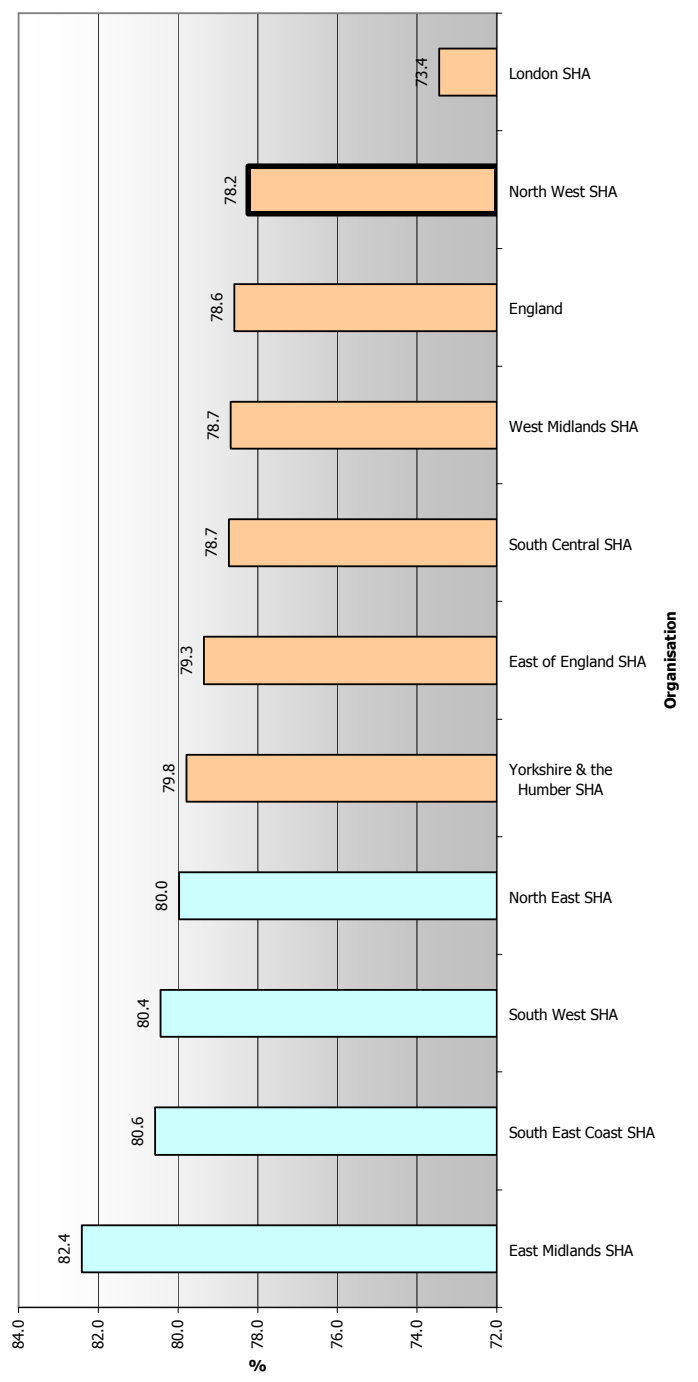
Cervical Screening Programme: coverage of the Target Age Group (25-64) by Primary Care Organisation, 2003-04 to 2007-08.

Cancer Network	KC53 Data for Target Screening Age 25-64 (ranked in order of coverage for 2007-2008)	Coverage 2007-2008	Coverage 2006-2007	Coverage 2005-2006	Coverage 2004-2005	Coverage 2003-2004
Greater Manchester & Cheshire	Central & Eastern Cheshire	82.3	83.2	83.6		
Greater Manchester & Cheshire	Bury	81.3	82.0	82.4	82.9	82.5
Greater Manchester & Cheshire	Stockport	81	81.3	81.5	81.8	82.1
Greater Manchester & Cheshire	Trafford	80.4	80.8	80.9		
Greater Manchester & Cheshire	Ashton, Leigh and Wigan	80	80.7	81.1	80.6	80.9
Greater Manchester & Cheshire	Bolton	79.4	80.6	81.1	81.2	82.3
Greater Manchester & Cheshire	Tameside and Glossop	79.3	80.3	81.1	82.1	82.4
Greater Manchester & Cheshire	Oldham	79.1	80.2	80.7	81.0	82.3
Greater Manchester & Cheshire	Heywood, Middleton & Rochdale	77.9	79.3	80.0		
Greater Manchester & Cheshire	Salford	77.2	77.9	78.3	78.8	78.7
Greater Manchester & Cheshire	Manchester	73.3	74.0	74.4		
Greater Manchester & Cheshire	Eastern Cheshire			84.2	84.9	85.3
Greater Manchester & Cheshire	Trafford South			83.2	83.1	82.8
Greater Manchester & Cheshire	Central Cheshire			83.2	83.7	84.3
Greater Manchester & Cheshire	Heywood and Middleton			80.9	81.3	80.7
Greater Manchester & Cheshire	Rochdale			79.5	81.0	81.3
Greater Manchester & Cheshire	Trafford North			77.6	79.2	79.5
Greater Manchester & Cheshire	South Manchester			76.5	76.4	77.2
Greater Manchester & Cheshire	North Manchester			74.5	75.1	76.3
Greater Manchester & Cheshire	Central Manchester			72.5	71.3	71.0
Lancashire & South Cumbria	East Lancashire	79	80.0			
Lancashire & South Cumbria	Central Lancashire	78.6	79.6			
Lancashire & South Cumbria	North Lancashire	78.5	79.2			
Lancashire & South Cumbria	Blackburn With Darwen	76	77.3	77.9	80.2	80.7
Lancashire & South Cumbria	Blackpool	74.1	75.0	75.3	76.7	78.4
Lancashire & South Cumbria	Eden Valley			85.8	85.5	86.0
Lancashire & South Cumbria	Wyre			82.0	82.3	82.9
Lancashire & South Cumbria	Chorley and South Ribble			82.0	82.9	84.1
Lancashire & South Cumbria	Fylde			80.4	81.9	82.7
Lancashire & South Cumbria	Burnley, Pendle and Rossendale			80.4	81.9	82.8
Lancashire & South Cumbria	West Lancashire			80.0	81.5	81.7
Lancashire & South Cumbria	Hyndburn and Ribble Valley			79.9	81.9	83.0
Lancashire & South Cumbria	Morecambe Bay			78.7	78.7	79.8
Lancashire & South Cumbria	Preston			77.3	78.1	80.3
Merseyside & Cheshire	Warrington	82	82.9	82.8	82.9	83.0
Merseyside & Cheshire	Western Cheshire	80.9	81.6	81.8		
Merseyside & Cheshire	Halton & St Helens	78.8	79.4	79.5		
Merseyside & Cheshire	Wirral	77.2	77.9	78.3		
Merseyside & Cheshire	Knowsley	74	74.5	74.8	75.3	75.6
Merseyside & Cheshire	Sefton	73.9	74.4	74.6		
Merseyside & Cheshire	Liverpool	71.6	72.3	72.8		
Merseyside & Cheshire	Cheshire West			82.2	83.3	84.0
Merseyside & Cheshire	Bebington and West Wirral			82.2	83.3	83.0
Merseyside & Cheshire	Ellesmere Port and Neston			81.1	81.7	82.6
Merseyside & Cheshire	St Helens			80.7	80.4	80.6
Merseyside & Cheshire	Halton			77.6	77.2	78.2
Merseyside & Cheshire	Birkenhead and Wallasey			76.4	78.4	78.2
Merseyside & Cheshire	Southport and Formby			76.3	77.2	77.9
Merseyside & Cheshire	North Liverpool			73.9	75.4	76.1
Merseyside & Cheshire	South Sefton			73.3	75.1	76.4
Merseyside & Cheshire	South Liverpool			73.3	74.6	75.8
Merseyside & Cheshire	Central Liverpool			72.1	73.5	73.9
Northern	Cumbria	81.7	82.0			
Northern	Carlisle and District			82.7	83.3	84.2
Northern	West Cumbria			82.7	82.1	82.6

Source Cervical Screening Programme, England:2007-08 Bulletin: 2007/14/HSCIC Table 13 © 2008, The Information Centre

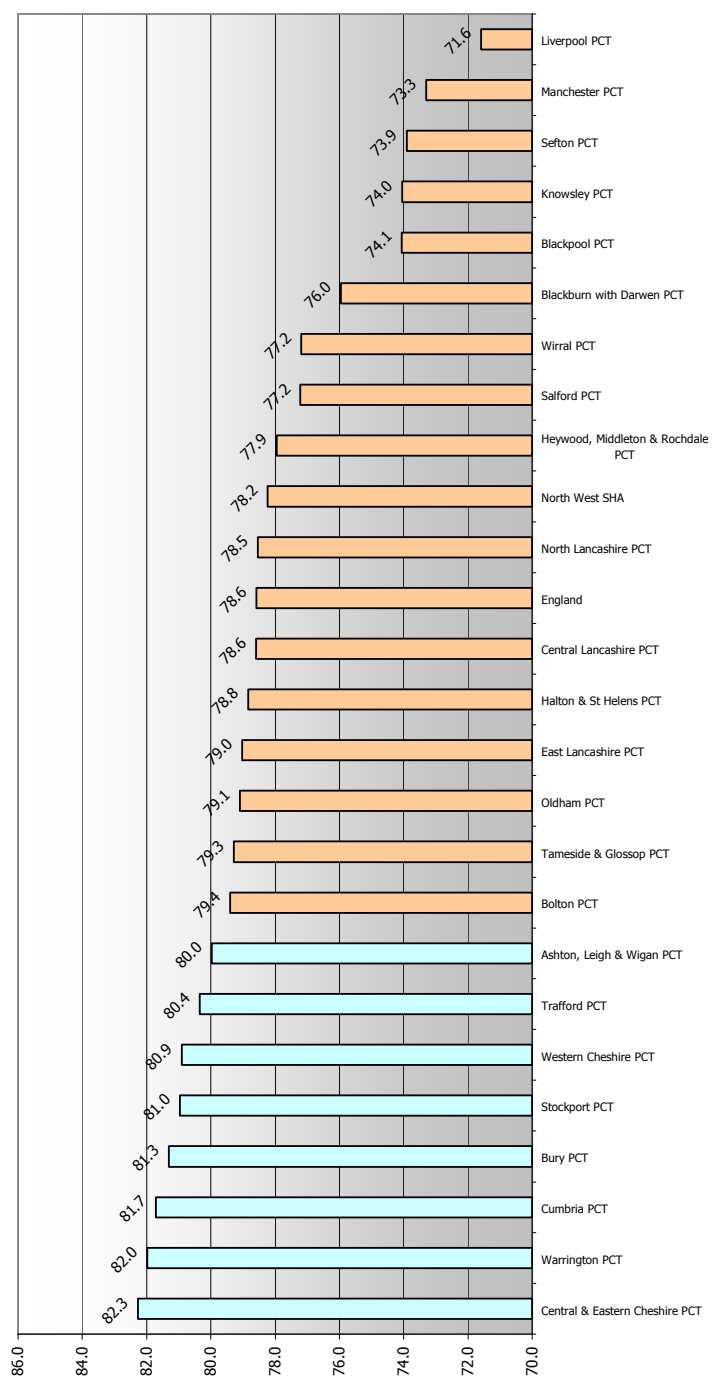
Cervical screening programme: coverage (less than 5 years since last adequate test) of the Target Age Group (25-64) by SHA 2007-08

Sources: KCS3 Parts A2 and A3; Cervical Screening Programme 2007-08 The Information Centre

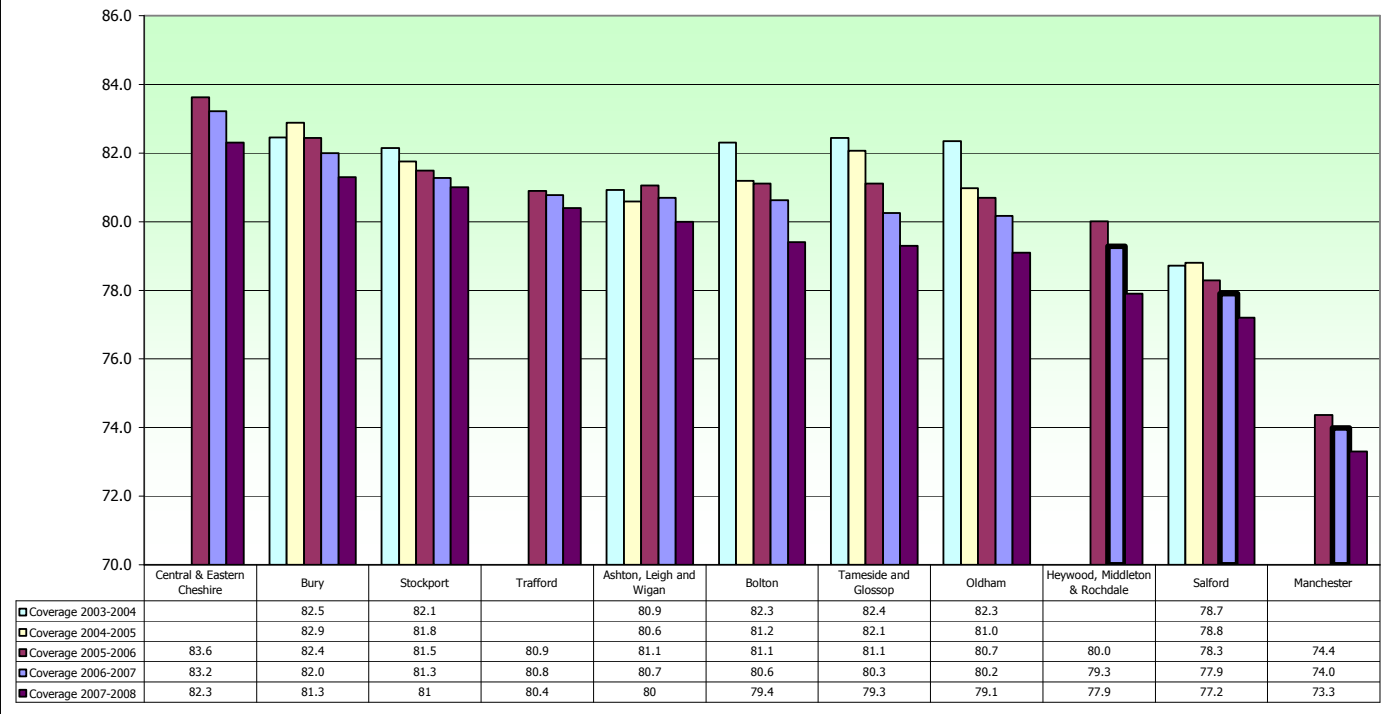


Cervical screening programme: coverage (less than 5 years since last adequate test) of the Target Age Group (25-64) by PCT 2007-08

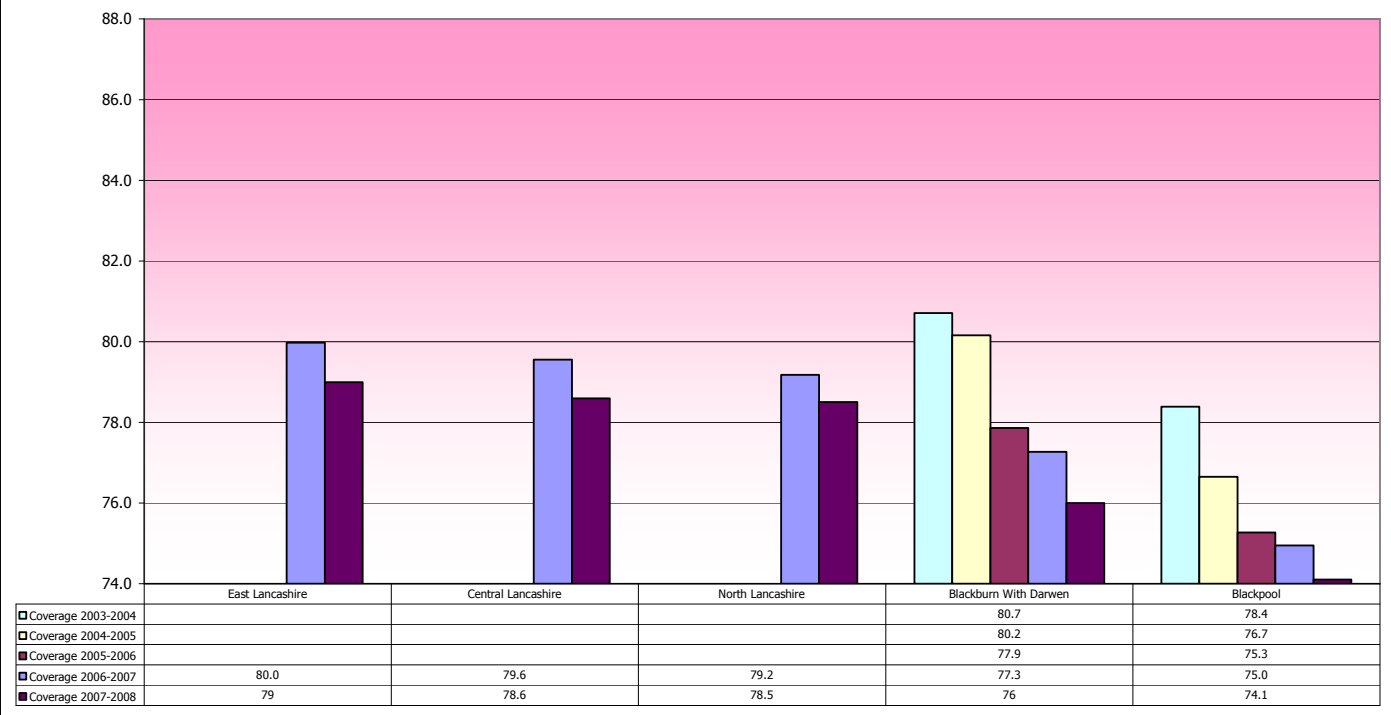
Sources: KCS3 Parts A2 and A3; Cervical Screening Programme 2007-08 The Information Centre



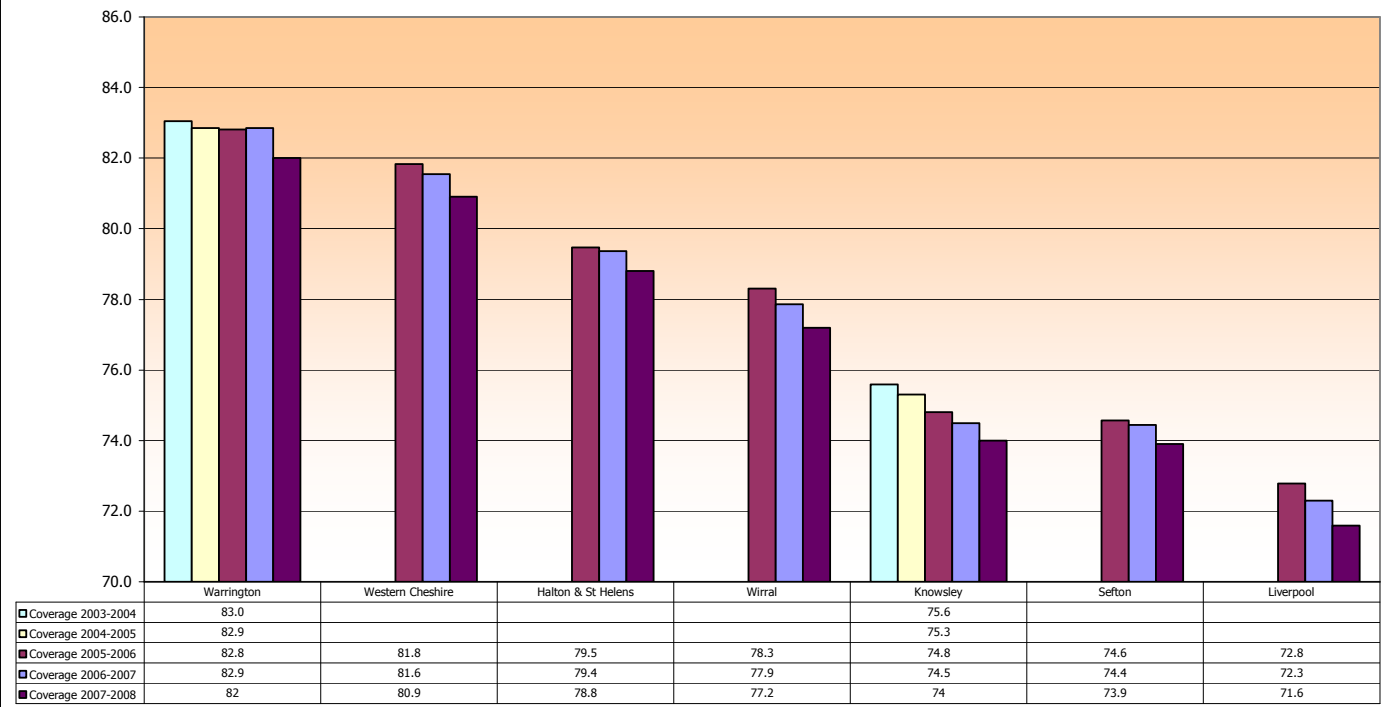
% Coverage (less than 5 years since adequate test) for the period 2003-2008 for target group 25-64 for Greater Manchester & Cheshire Cancer Network. Target 80%.



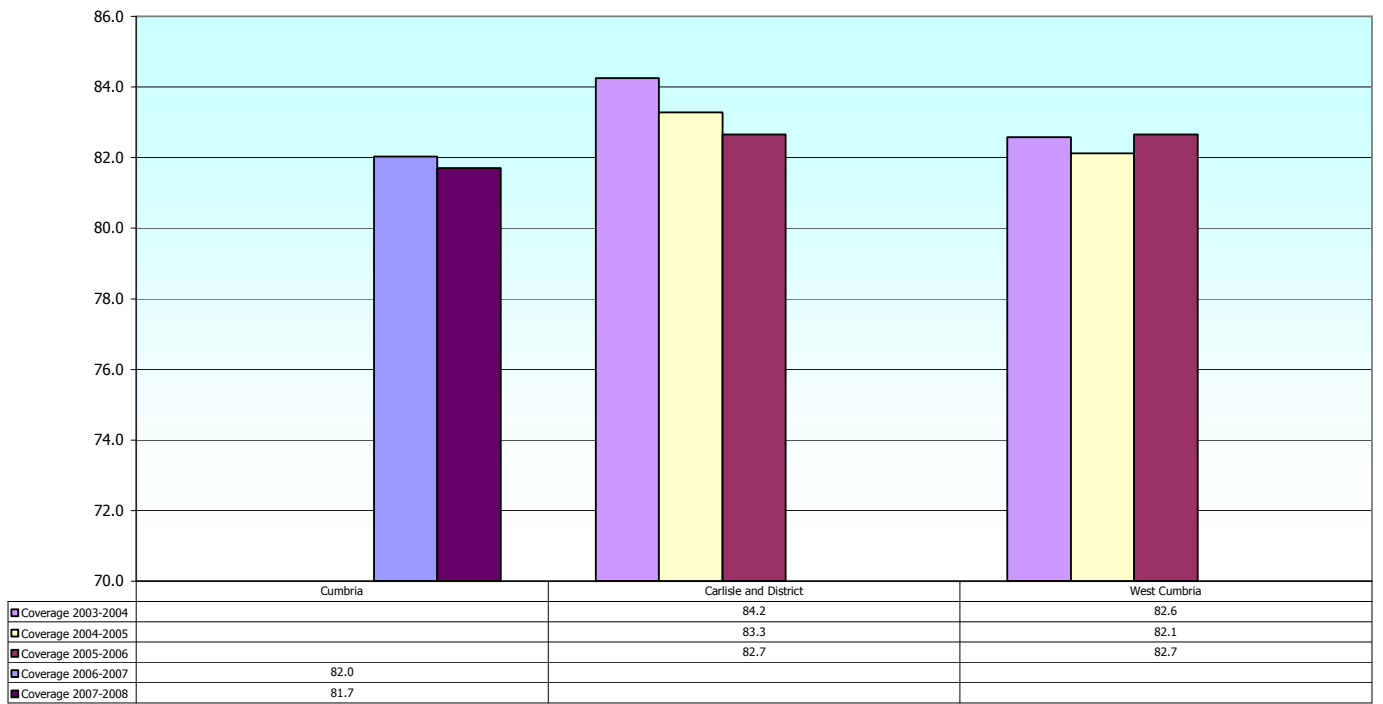
% Coverage (less than 5 years since adequate test) for the period 2003-2008 for target group 25-64 for Lancashire & South Cumbria Cancer Network. Target 80%.



% Coverage (less than 5 years since adequate test) for the period 2003-2008 for target group 25-64 for Merseyside & Cheshire Cancer Network. Target 80%.



% Coverage (less than 5 years since adequate test) for the period 2003-2008 for target group 25-64 for Northern Cancer Network. Target 80%.



Measuring laboratory performance in the North West

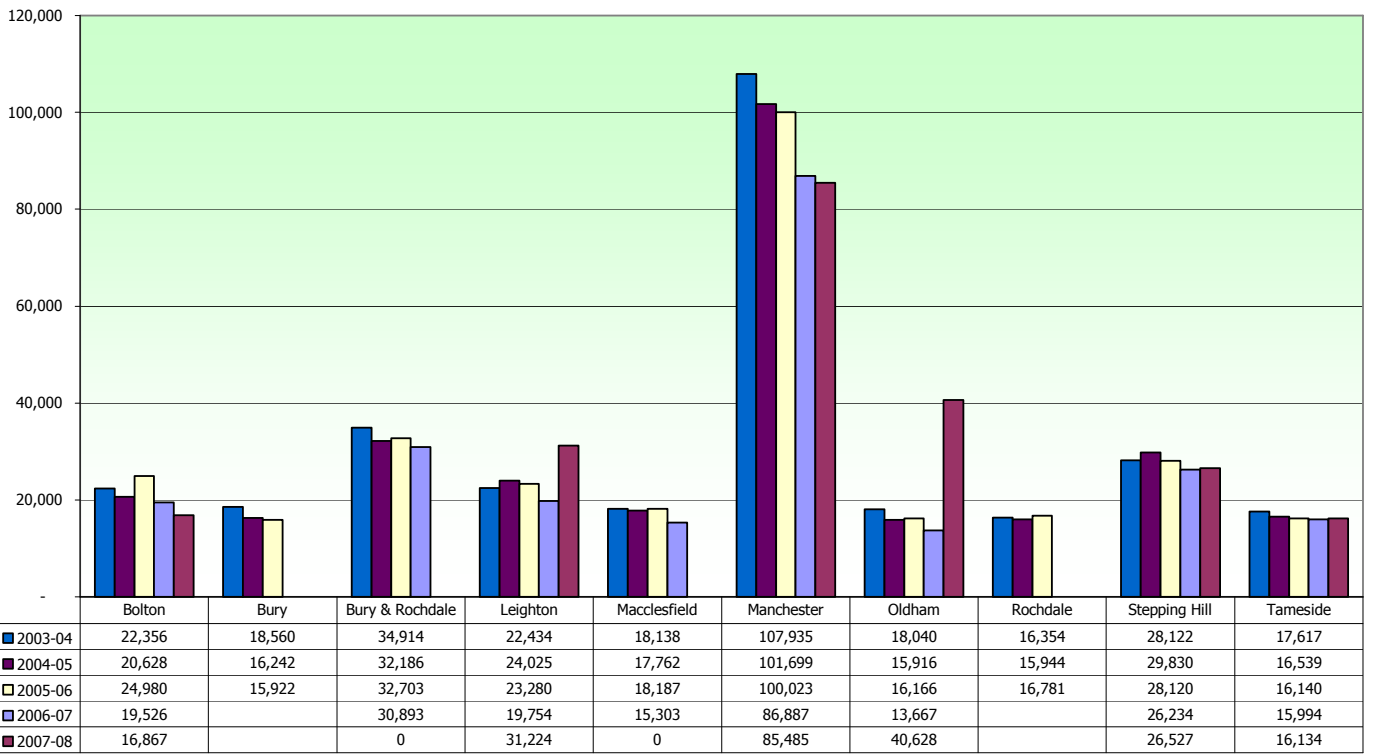
2003-04 to 2007-08

Workload

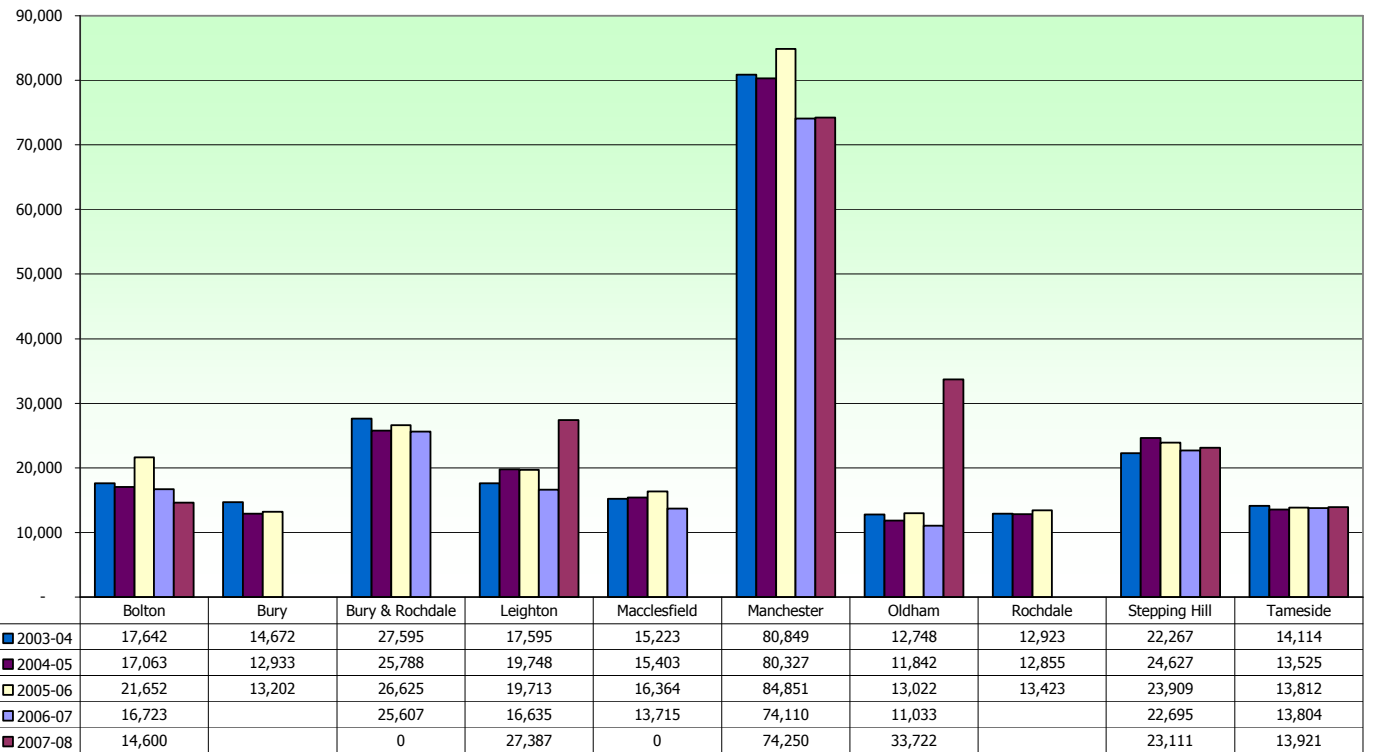
Laboratory by Cancer Network		Workload - Smears examined									
		2007-08		2006-07		2005-06		2004-05		2003-04	
		All sources, all ages	GP & NHS CC (25-64)	All sources, all ages	GP & NHS CC (25-64)	All sources, all ages	GP & NHS CC (25-64)	All sources, all ages	GP & NHS CC (25-64)	All sources, all ages	GP & NHS CC (25-64)
Lancs & S Cumbria	Blackpool	21,837	18,988	20,436	17,433	21,598	18,193	22,351	18,203	23,327	18,370
	Chorley	22,166	18,998	23,399	19,783	25,535	21,872	25,926	20,609	28,321	21,436
	East Lancashire (formerly Blackburn & Burnley)	32,897	28,649	34,787	30,194	37,805	32,652	39,166	32,765	41,543	33,771
	Lancaster	18,206	16,303	17,944	15,829	22,012	19,231	22,079	18,141	22,387	17,310
	Blackburn					19,666	17,103	20,419	17,318	21,366	17,652
	Burnley					18,139	15,549	18,747	15,447	20,177	16,119
Manchester & Cheshire	Bolton	16,867	14,600	19,526	16,723	24,980	21,652	20,628	17,063	22,356	17,642
	Bury					15,922	13,202	16,242	12,933	18,560	14,672
	Bury & Rochdale			30,893	25,607	32,703	26,625	32,186	25,788	34,914	27,595
	Leighton	31,224	27,387	19,754	16,635	23,280	19,713	24,025	19,748	22,434	17,595
	Macclesfield			15,303	13,715	18,187	16,364	17,762	15,403	18,138	15,223
	Manchester	85,485	74,250	86,887	74,110	100,023	84,851	101,699	80,327	107,935	80,849
	Oldham	40,628	33,722	13,667	11,033	16,166	13,022	15,916	11,842	18,040	12,748
	Rochdale					16,781	13,423	15,944	12,855	16,354	12,923
	Stepping Hill	26,527	23,111	26,234	22,695	28,120	23,909	29,830	24,627	28,122	22,267
Tameside	16,134	13,921	15,994	13,804	16,140	13,812	16,539	13,525	17,617	14,114	
Merseyside & Cheshire	Aintree	18,903	16,662	19,193	16,965	19,450	17,142	21,745	18,729	22,522	19,038
	Arrowe Park	21,794	19,031	23,967	20,732	25,514	21,969	28,482	23,635	27,561	22,230
	Chester	18,411	15,815	20,455	17,582	22,687	19,802	23,962	20,296	23,508	19,076
	Liverpool	26,983	21,608	24,733	19,005	26,706	19,849	29,443	20,478	33,695	22,846
	Southport	14,420	12,615	15,264	13,406	15,538	13,452	17,720	14,568	17,718	14,566
	Warrington	21,784	18,936	24,883	21,186	31,143	26,597	26,215	21,371	26,799	21,132
	Whiston	17,506	14,609	18,727	15,485	22,251	17,912	22,827	17,895	23,361	17,549
Northern	Carlisle	23,462	21,018	25,440	22,785	25,238	22,237	25,800	22,378	26,634	22,647

Source Cervical Screening Programme, England:2007-08 Bulletin: 2007/14/HSCIC Table 19 © 2008, The Information Centre

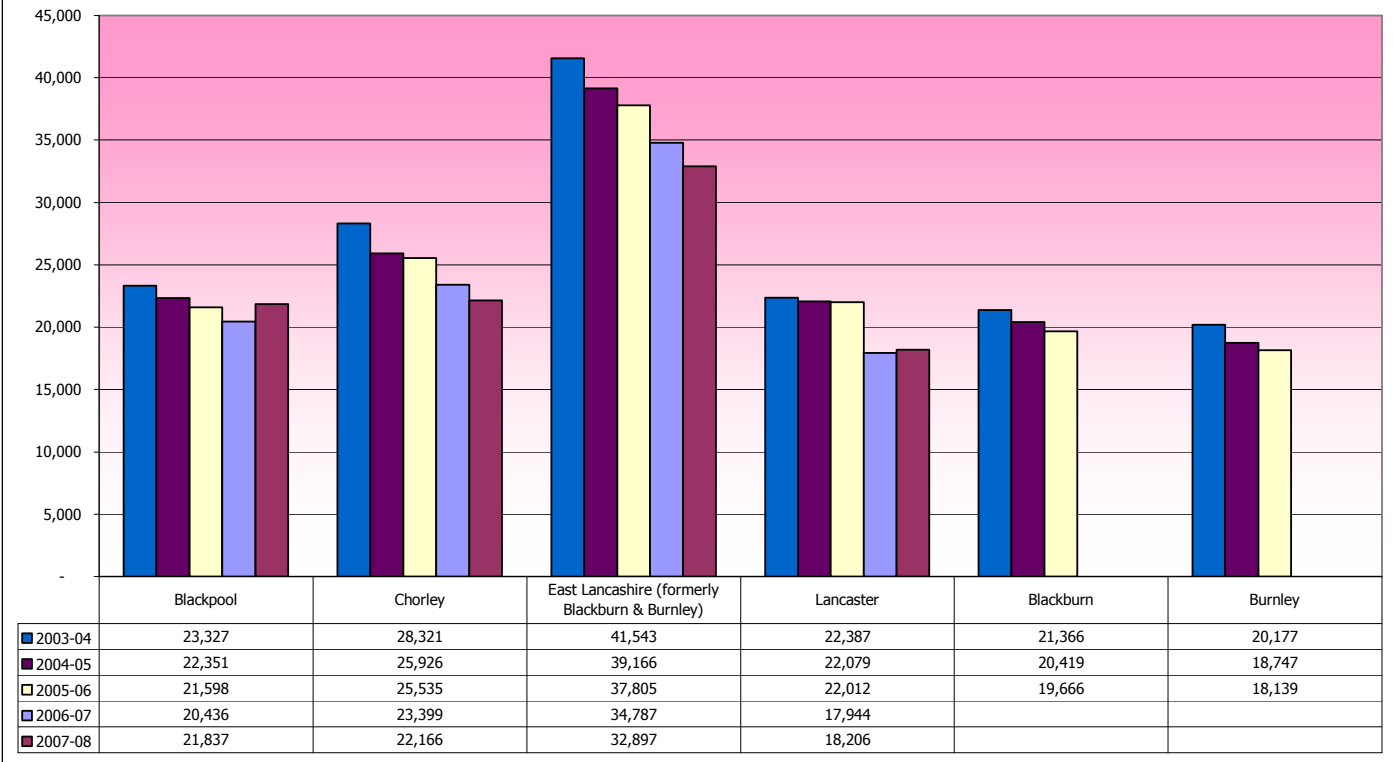
Workload (all sources, all ages) 2003-2008 for Greater Manchester & Cheshire Cancer Network.



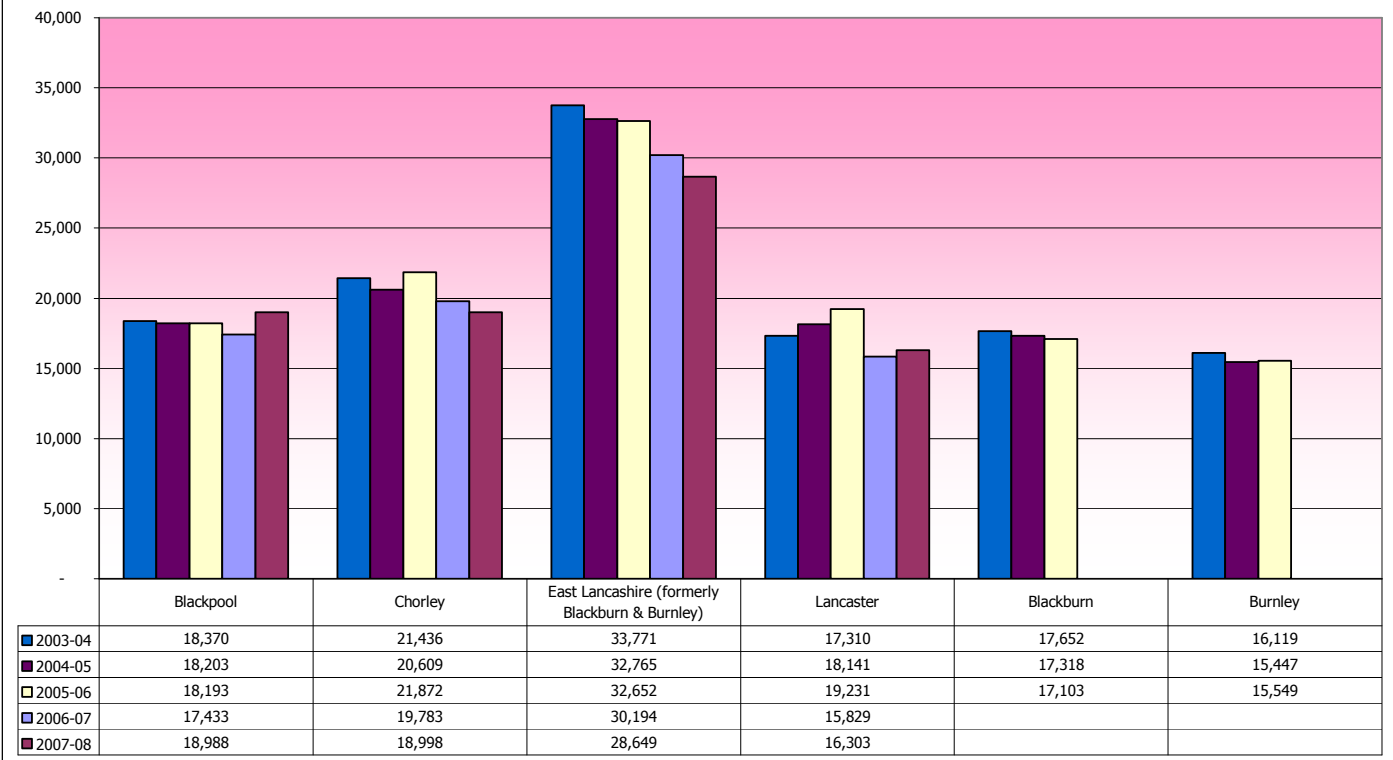
Workload (GP & NHSCC) 2003-2008 for Greater Manchester & Cheshire Cancer Network.



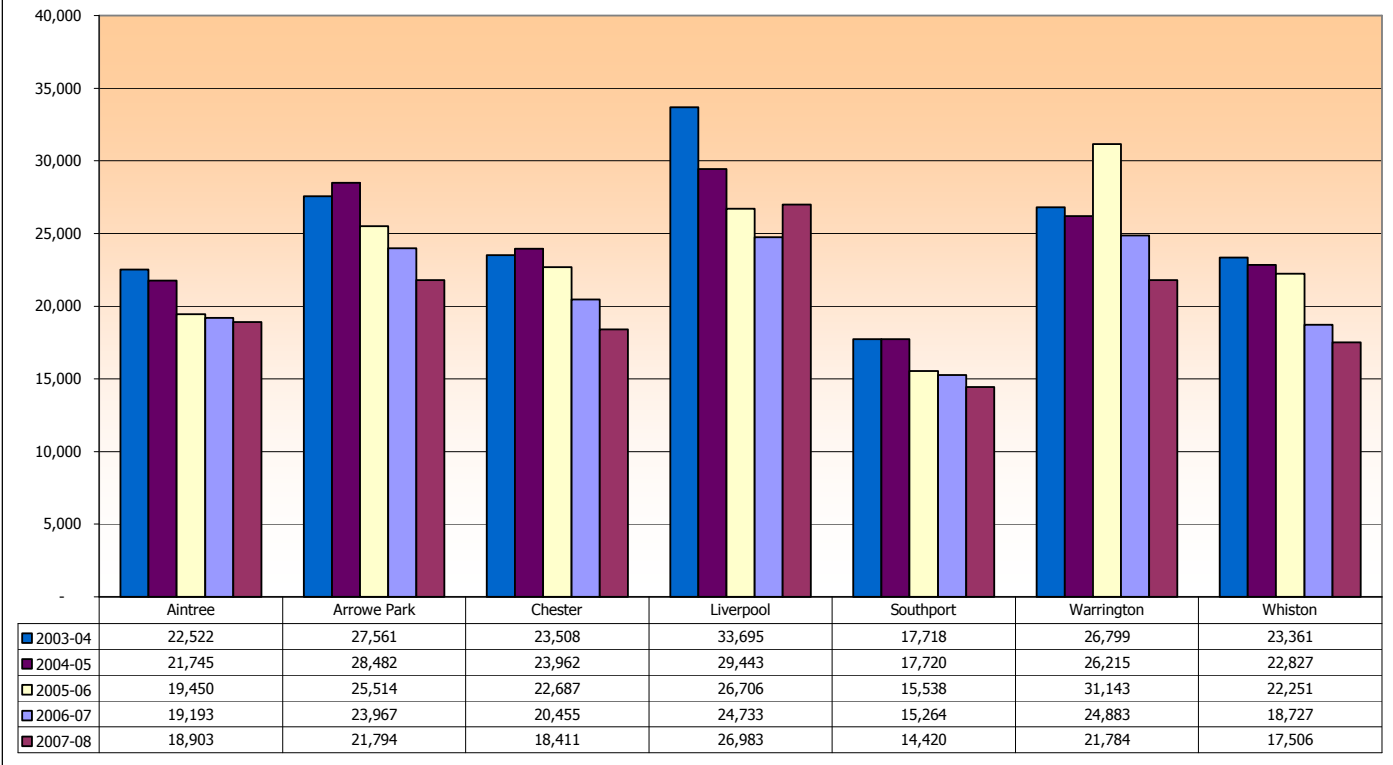
Workload (all sources, all ages) 2003-2008 for Lancashire & South Cumbria Cancer Network.



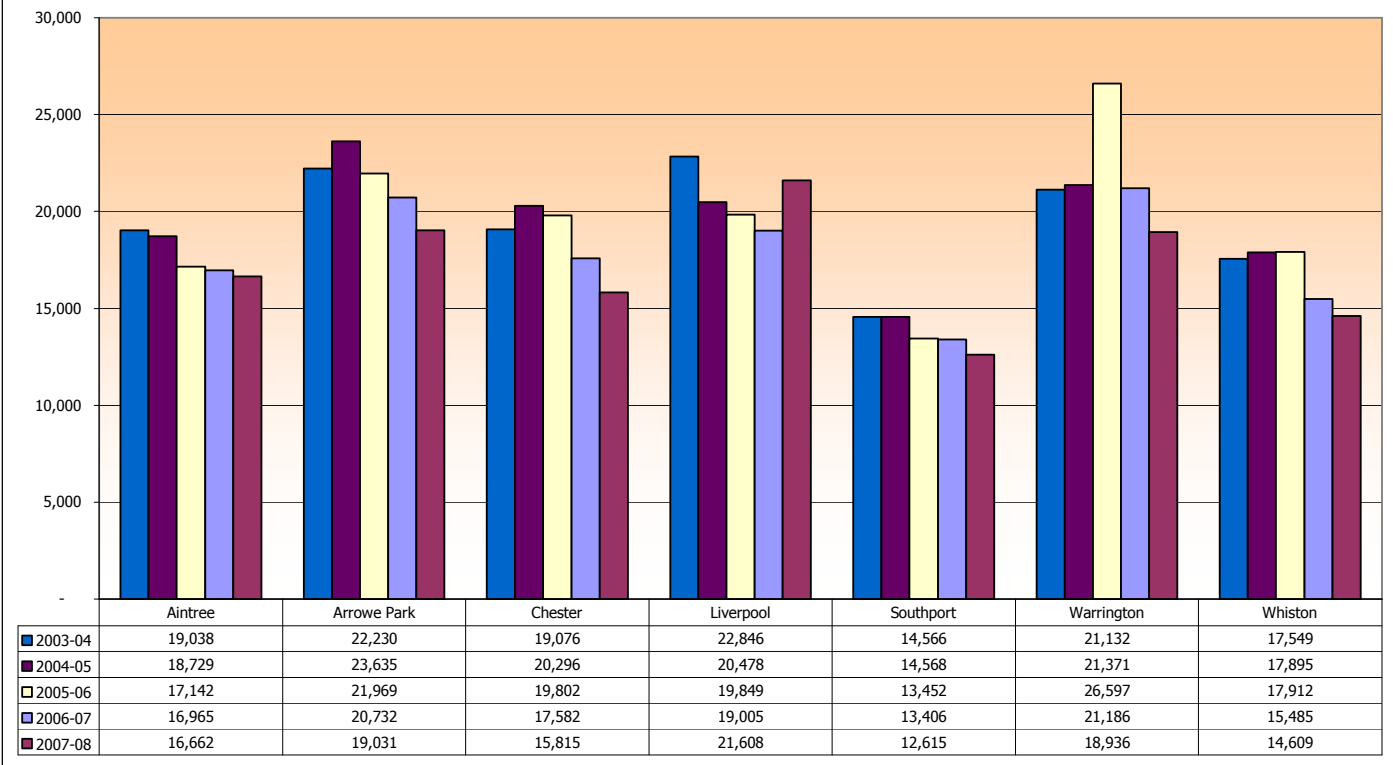
Workload (GP & NHSCC) 2003-2008 for Lancashire & South Cumbria Cancer Network.



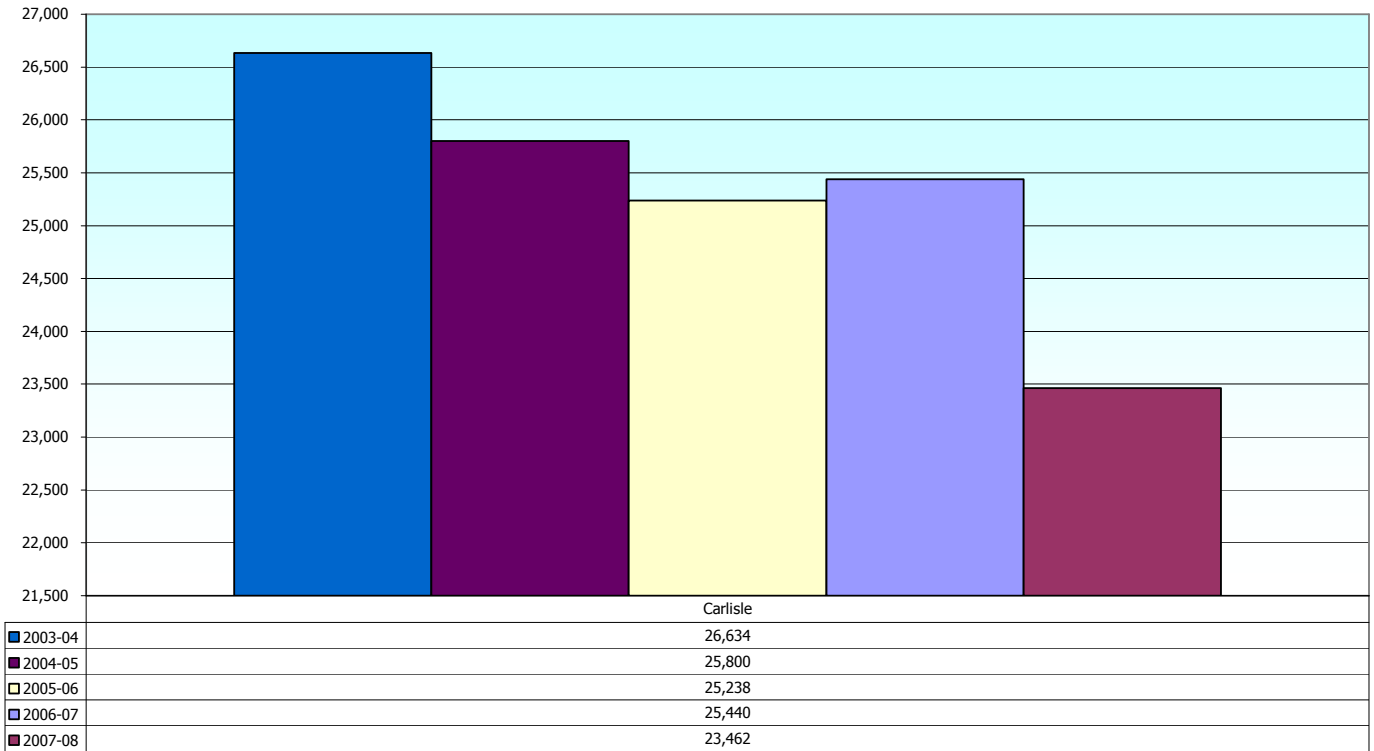
Workload (all sources, all ages) 2003-2008 for Merseyside& Cheshire Cancer Network.



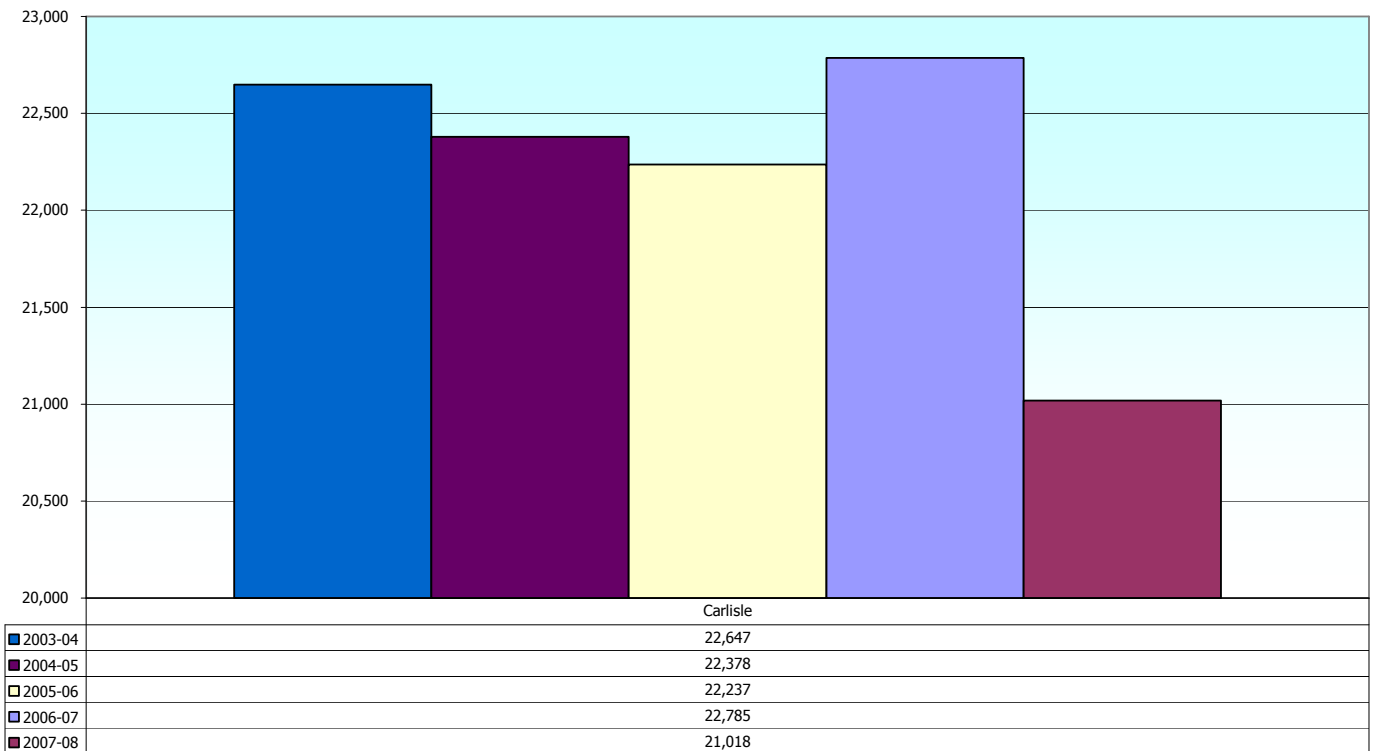
Workload (GP & NHSCC) 2003-2008 for Merseyside& Cheshire Cancer Network.



Workload (all sources, all ages) 2003-2008 for Northern Cancer Network.



Workload (GP & NHSCC) 2003-2008 for Northern Cancer Network.



Measuring laboratory performance in the North West

2002-03 to 2007-08

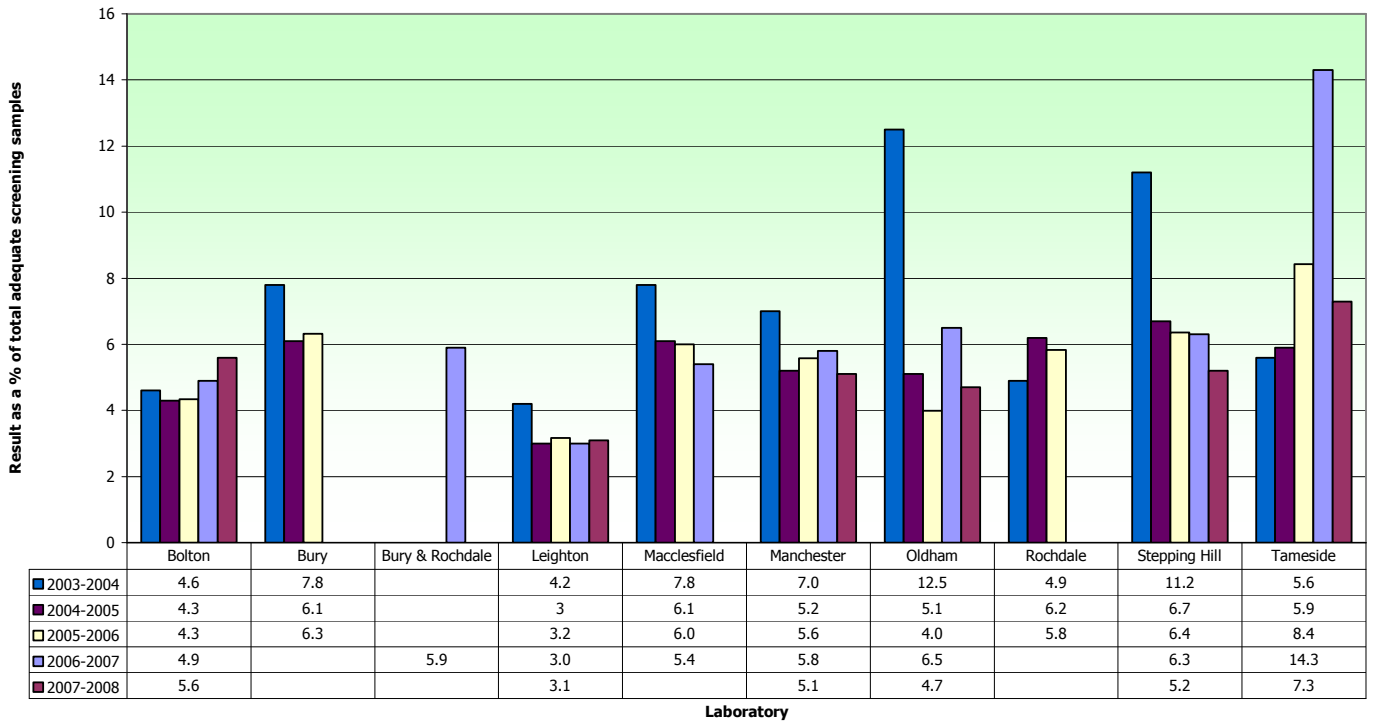
Reporting Profile

Laboratory by Cancer Network		2007-2008		2006-2007		2005-2006		2004-2005		2003-2004		2002-2003		
		Low Grade	High Grade	Low Grade	High Grade	Low Grade	High Grade	Low Grade	High Grade	Low Grade	High Grade	Low Grade	High Grade	
		Borderline/Mild	Moderate/Severe & above	Borderline/Mild	Moderate/Severe & above	Borderline/Mild	Moderate/Severe & above	Borderline/Mild	Moderate/Severe & above	Borderline/Mild	Moderate/Severe & above	Borderline/Mild	Moderate/Severe & above	
Lancs & Cumbria	Blackburn					4.8	0.8	4.9	0.7	4.7	1.0	5.2	0.9	
	Blackpool	5.4	1.2	6.5	1.7	4.6	1.1	4.2	1.1	5.6	1.5	5.7	1.5	
	East Lancashire Hos	5.8	0.7	5.6	0.7									
	Burnley					6.2	0.8	5.8	0.5	8.1	1.2	8.6	1.1	
	Chorley	6.9	1.1	6.4	1.4	5.0	1.0	4	0.8	4.2	1.1	4.7	1.1	
	Lancaster	6.5	1.0	5.9	0.9	5.0	0.7	6.1	1.4	9.8	1.6	12.0	1.9	
Manchester & Cheshire	Bolton	5.6	1.0	4.9	1.2	4.3	0.9	4.3	0.9	4.6	1.1	6.2	1.2	
	Bury					6.3	1.0	6.1	0.8	7.8	1.2	8.2	1.4	
	Bury & Rochdale			5.9	1.2									
	Leighton	3.1	0.8	3.0	0.8	3.2	0.8	3	1.0	4.2	1.3	3.5	1.0	
	Macclesfield			5.4	0.8	6.0	0.7	6.1	0.8	7.8	1.0	2.8	1.1	
	Manchester	5.1	1.0	5.8	1.5	5.6	0.9	5.2	0.8	7.0	1.1	9.1	1.5	
	Oldham	4.7	1.1	6.5	1.1	4.0	1.0	5.1	0.7	12.5	2.0	9.2	1.4	
	Rochdale					5.8	1.2	6.2	1.0	4.9	0.9	3.7	0.9	
	Stepping Hill	5.2	1.2	6.3	1.0	6.4	0.8	6.7	1.1	11.2	1.4	12.5	1.2	
	Tameside	7.3	0.6	14.3	0.8	8.4	1.2	5.9	0.8	5.6	0.9	6.2	0.8	
	Aintree	8.1	1.4	5.9	1.1	7.0	1.2	4.8	0.9	4.6	1.0	5.3	1.1	
	Merseyside & Cheshire	Arrowe Park	6.4	0.7	6.0	0.7	6.6	0.7	4.9	0.9	5.6	1.2	5.6	1.2
Chester		5.2	1.0	5.3	0.9	3.9	0.9	5.2	1.0	6.8	1.3	6.3	1.2	
Liverpool		5.3	1.3	5.2	1.2	5.5	1.4	5.2	1.5	6.4	1.8	6.6	1.3	
Southport		10.0	1.4	7.2	1.1	6.0	1.3	3.7	1.1	4.3	1.3	6.6	2.0	
Warrington		5.2	1.4	4.6	1.3	5.4	1.4	3.5	1.2	3.9	1.4	4.9	1.1	
Whiston		5.6	0.8	5.5	1.0	4.7	1.0	4.7	1.0	7.3	1.5	8.5	1.3	
Northern		Carlisle	5.8	1.0	6.5	1.1	6.1	1.0	5.6	1.2	5.2	1.3	3.9	1.3

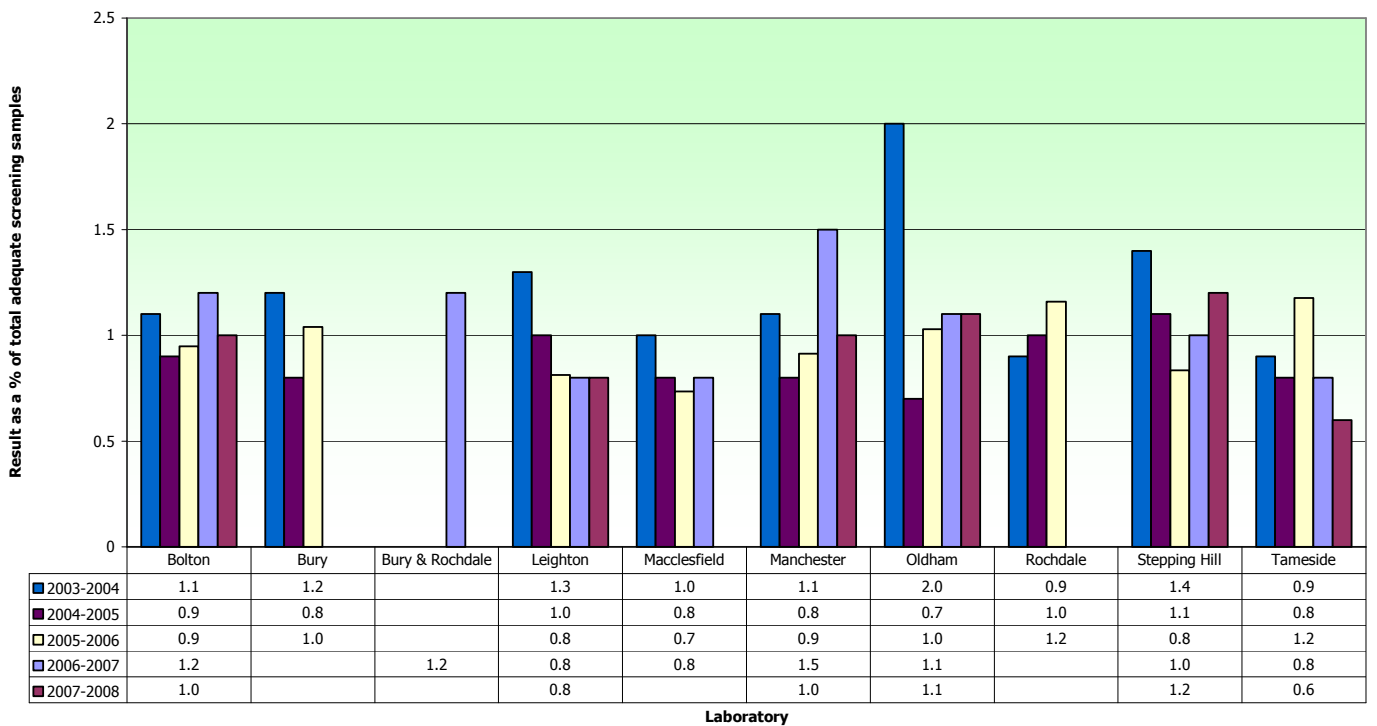
* All reporting profiles are taken from the 10th to 90th percentile range 2007-2008 as shown in Cervical Screening Programme England 2007-08

Source Cervical Screening Programme, England:2007-08 Bulletin: 2007/14/HSCIC Table 19 © 2008, The Information Centre

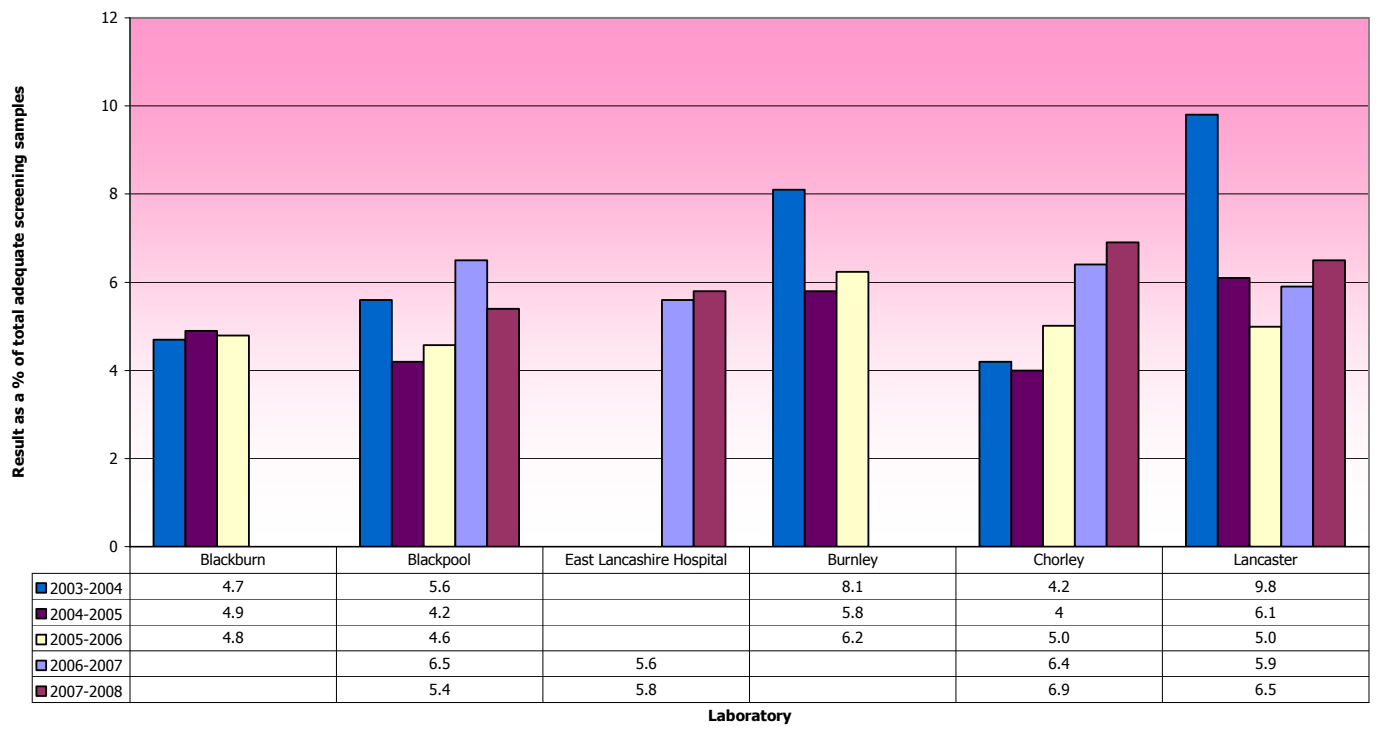
Laboratory Reporting Profiles for Low Grade (Borderline/Mild) Sample Results for Greater Manchester & Cheshire Cancer Network 2003 - 2008



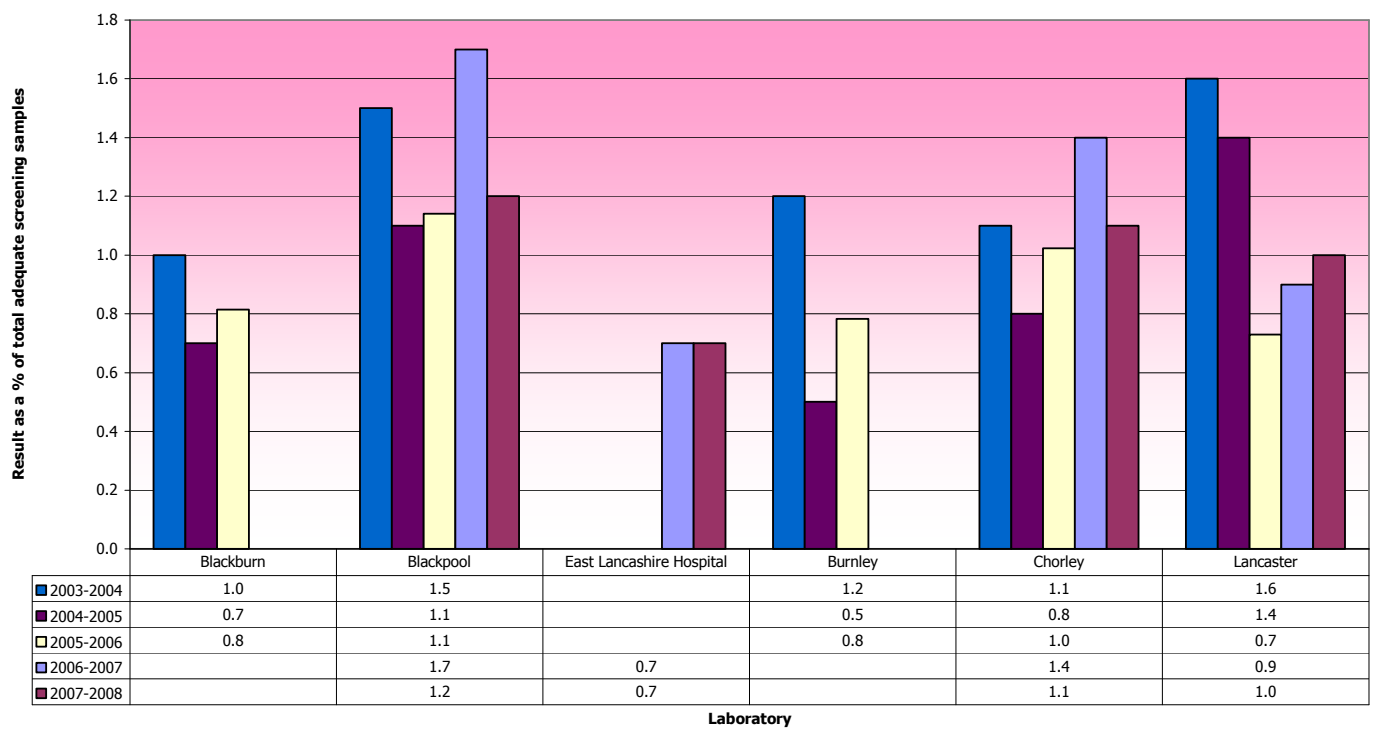
Laboratory Reporting Profiles for High Grade (Moderate/Severe & above) Sample Results for Greater Manchester & Cheshire Cancer Network 2003 - 2008



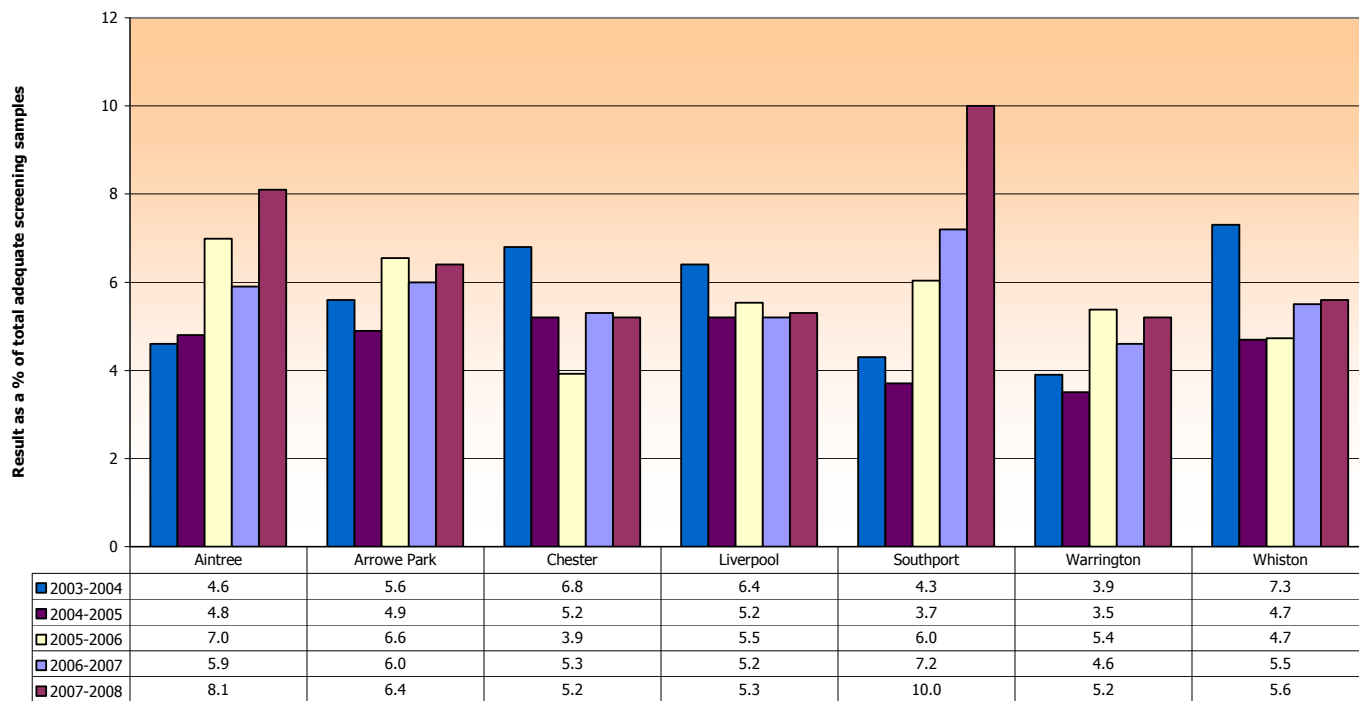
Laboratory Reporting Profiles for Low Grade (Borderline/Mild) Sample Results for Lancashire & South Cumbria Cancer Network 2003 - 2008



Laboratory Reporting Profiles for High Grade (Moderate/Severe and above) Sample Results for Lancashire & South Cumbria Cancer Network 2003 - 2008

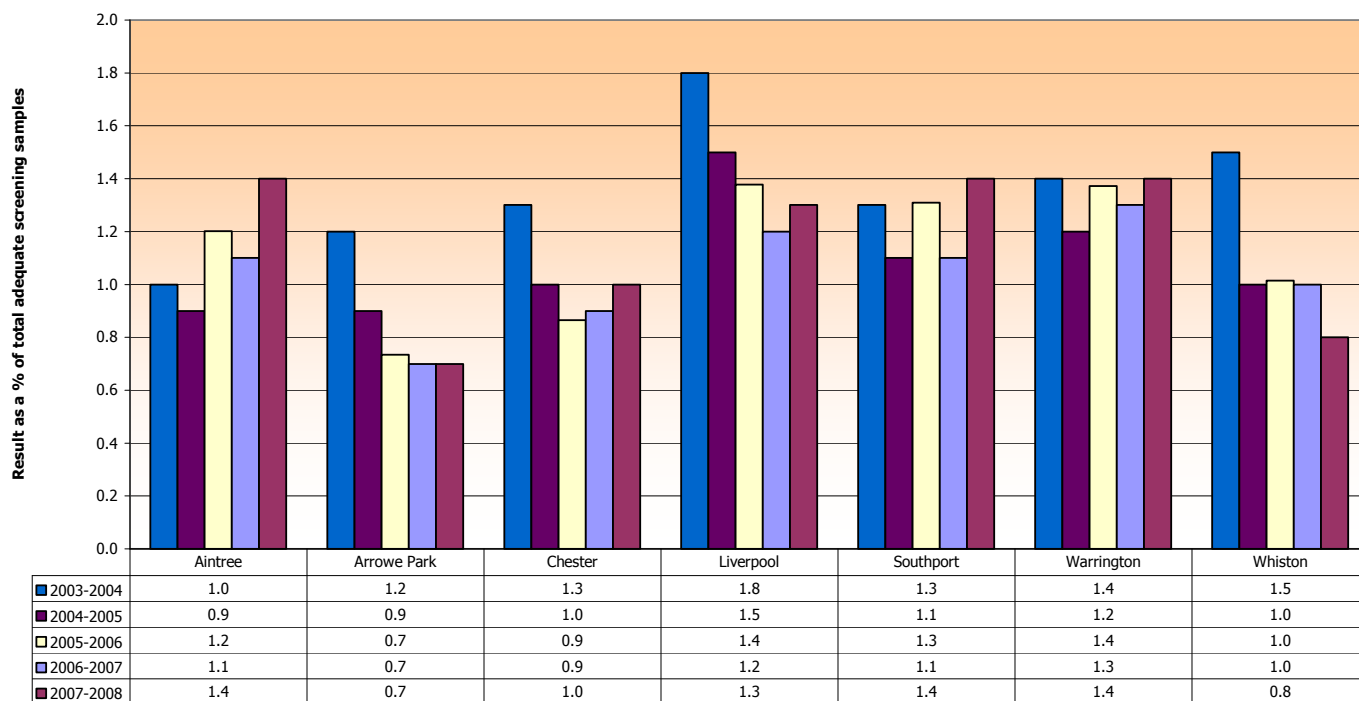


Laboratory Reporting Profiles for Low Grade (Borderline/Mild) Sample Results for Merseyside & Cheshire Cancer Network 2003 - 2008



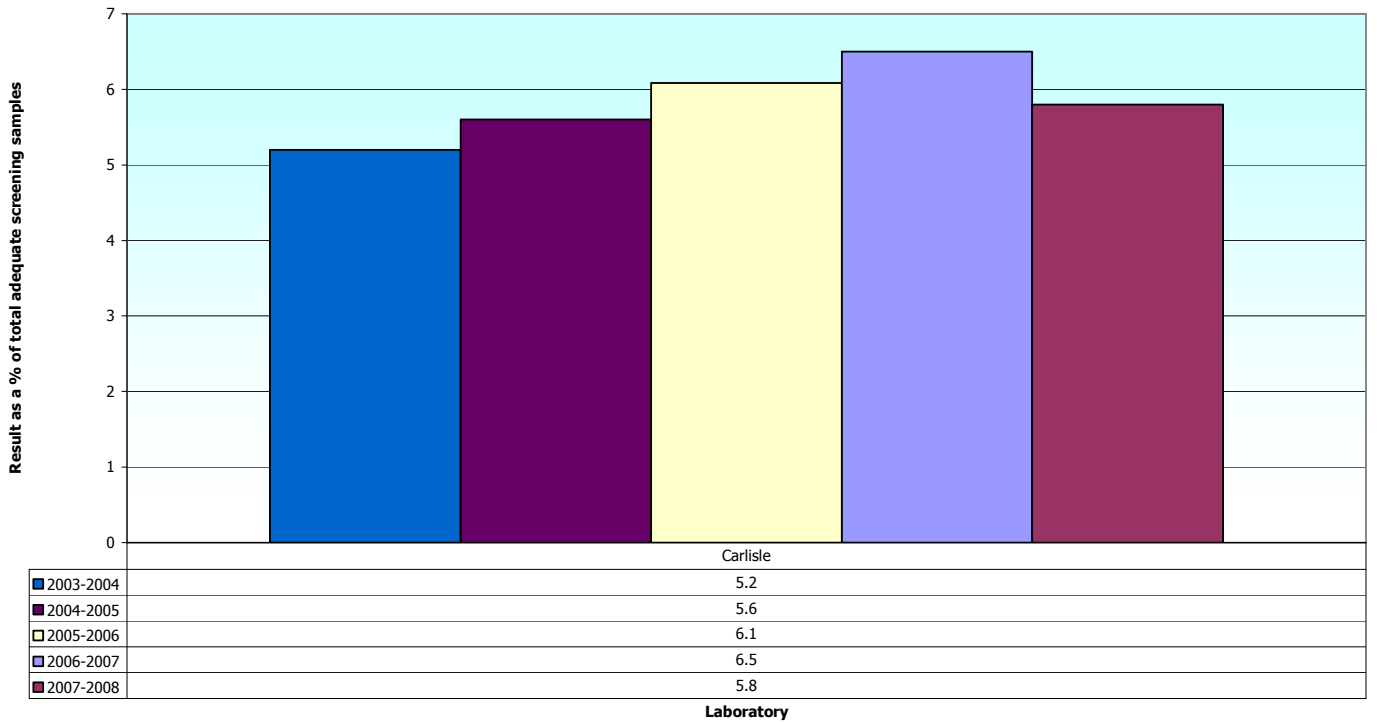
Laboratory

Laboratory Reporting Profiles for High Grade (Moderate/Severe and above) Sample Results for Merseyside & Cheshire Cancer Network 2003 - 2008

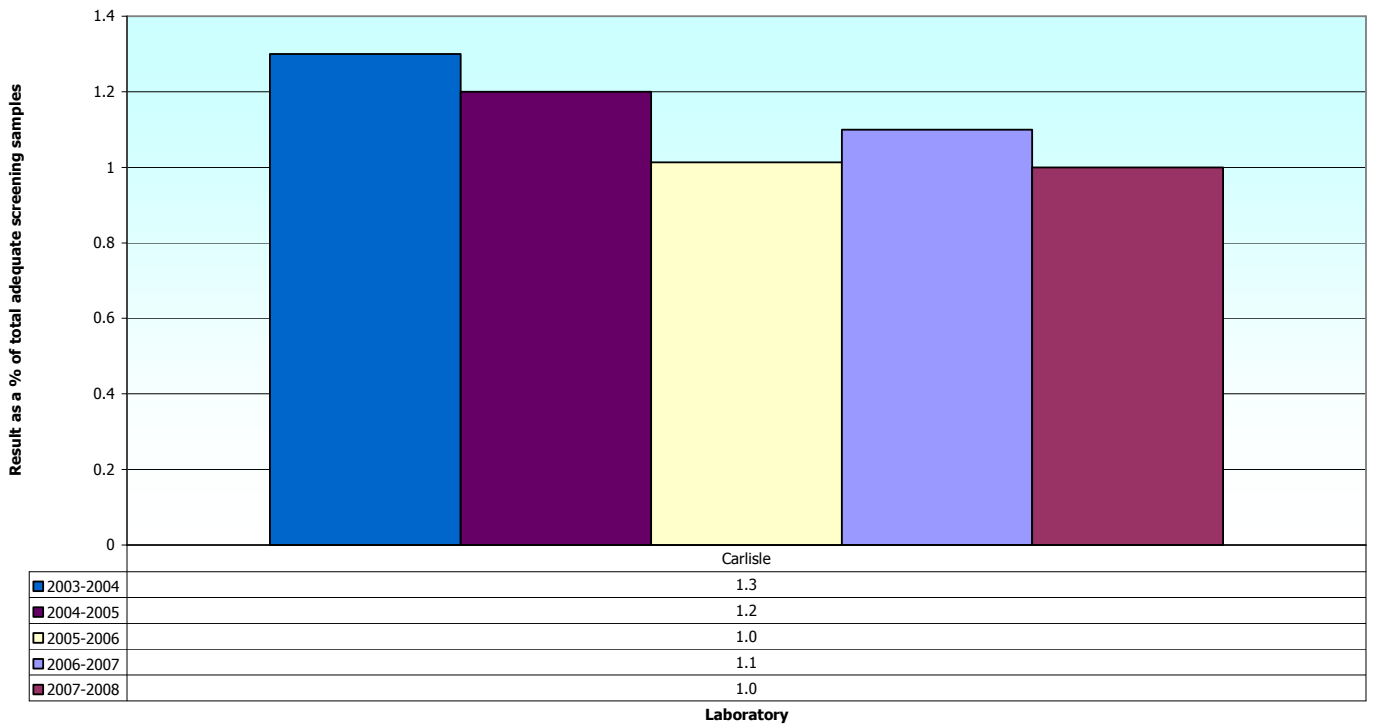


Laboratory

Laboratory Reporting Profiles for Low Grade (Borderline/Mild) Sample Results for Northern Cancer Network 2003 - 2008



Laboratory Reporting Profiles for High Grade (Moderate/Severe & above) Sample Results for Northern Cancer Network 2003 - 2008



Measuring laboratory performance in the North West

2002-03 to 2007-08

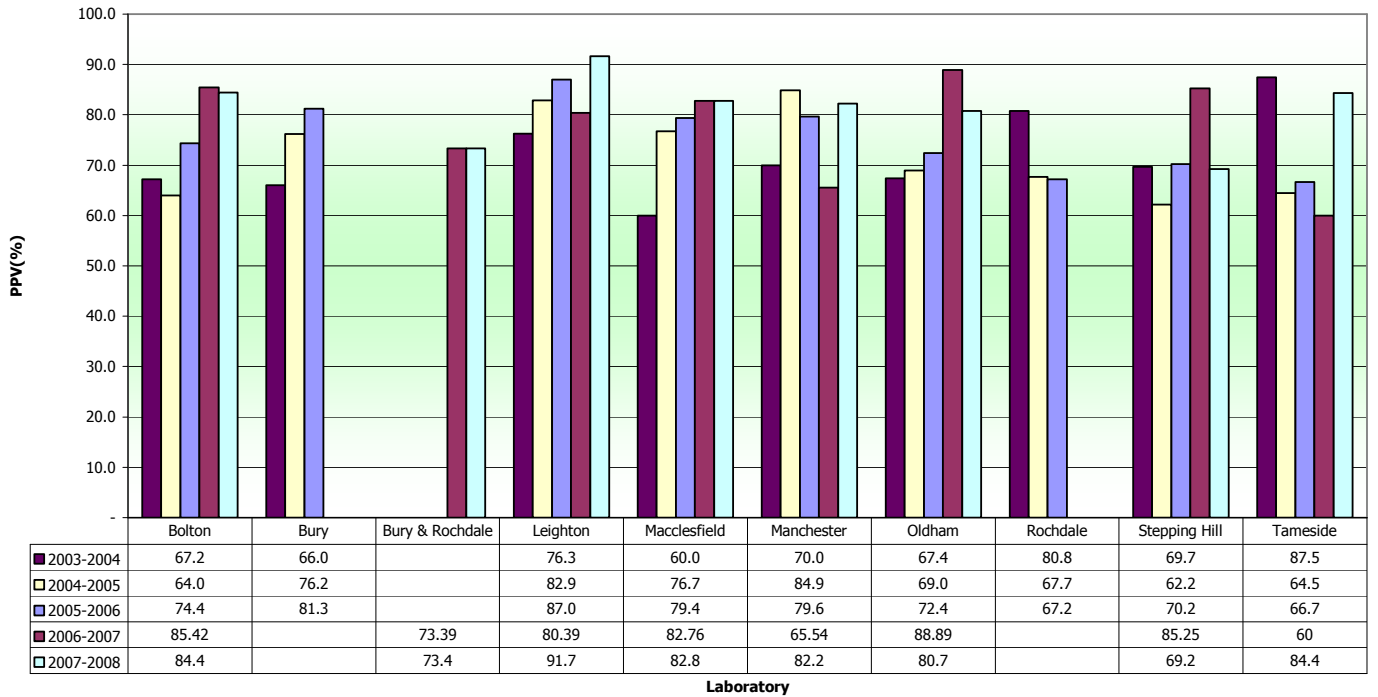
PPV %

Correlation of Cytology & Histology Quality Standard 70.7% to 88.9%		Positive Predictive Value (%)											
		2007-2008		2006-2007		2005-2006		2004-2005		2003-2004		2002-2003	
Laboratory by Cancer Network		Part C1 Apr 07 - Jun 07	Part C2 Apr 06 - Mar 07	Part C1 Apr 06 - Jun 06	Part C2 Apr 05 - Mar 06	Part C1 Apr 05 - Jun 05	Part C2 Apr 04 - Mar 05	Part C1 Apr 04 - Jun 04	Part C2 Apr 03 - Mar 04	Part C1 Apr 03 - Jun 03	Part C2 Apr 02 - Mar 03	Part C1 Apr 02 - Jun 02	Part C2 Apr 01 - Mar 02
Lancs & S Cumbria	Blackburn					59.3	59.9	74.2	71.0	71.4	75.9	76.2	61.1
	Blackpool	81.2	83.0	87.06	85.12	82.5	83.4	92.1	77.6	84.3	79.9	83.1	79.8
	Burnley					86.7	82.3	83.3	72.7	66.0	74.2	59.3	72.6
	East Lancashire	77.9	79.0	85.9	80.9								
	Chorley	89.8	83.3	75	82.05	80.3	80.8	69.2	74.6	75.4	75.1	68.8	72.9
Manchester & Cheshire	Lancaster	85.7	73.7	61.9	79.02	68.6	71.9	63.8	67.9	68.6	66.6	62.0	67.9
	Bolton	84.4	86.9	85.42	79.82	74.4	73.8	64.0	74.2	67.2	71.8	68.6	68.6
	Bury					81.3	82.1	76.2	72.2	66.0	75.6	65.3	76.2
	Bury & Rochdale	73.4		73.39									
	Leighton	91.7	84.9	80.39	88.55	87.0	86.8	82.9	79.7	76.3	81.4	76.2	Data not supplied *
	Macclesfield	82.8	84.2	82.76	84.17	79.4	76.2	76.7	70.7	60.0	75.8	73.8	73.8
	Manchester	82.2	67.9	65.54	80.57	79.6	80.6	84.9	77.7	70.0	73.9	75.3	74.7
	Oldham	80.7	77.3	88.89	76.47	72.4	78.9	69.0	65.8	67.4	68.7	67.5	71.8
	Rochdale					67.2	73.6	67.7	70.1	80.8	69.5	67.4	69.4
	Stepping Hill	69.2	73.4	85.25	75.23	70.2	73.0	62.2	70.4	69.7	69.7	65.3	64.7
Merseyside & Cheshire	Tameside	84.4	75.7	60	71.54	66.7	69.2	64.5	85.9	87.5	78.7	75.0	78.1
	Aintree	83.1	79.4	66.2	80.69	89.4	85.5	85.7	79.9	79.6	74.4	76.4	Data not supplied *
	Arrowe Park	89.1	86.4	86.84	81.52	80.4	80.7	84.2	76.7	71.7	74.5	68.8	75.2
	Chester	93.9	89.2	86.27	85.56	81.6	74.0	74.5	69.5	71.4	76.1	67.8	Data not supplied *
	Liverpool	92.9	91.1	89.74	84.72	82.7	84.6	84.0	85.3	89.2	81.3	72.0	75.4
	Southport	76.6	73.6	65.85	70.5	68.1	76.6	75.0	65.9	57.1	59.7	65.2	Data not supplied *
	Warrington	87.0	90.6	89.9	85.58	84.6	85.1	85.5	79.5	71.4	80.9	72.8	Data not supplied *
Northern	Whiston	96.7	82.8	76.81	78.86	86.2	81.7	76.6	77.1	74.5	78.7	72.9	Data not supplied *
Northern	Carlisle	88.2	86.7	84.52	90.91	91.4	82.3	82.1	85.4	85.5	84.8	87.3	80.7

Source Cervical Screening Programme, England:2007-08 Bulletin: Table 19 © 2008, The Information Centre

Positive Predictive Value (C1) by Laboratory 2003-2008 for Greater Manchester & Cheshire Cancer Network.

Standard 70.7% to 88.9%



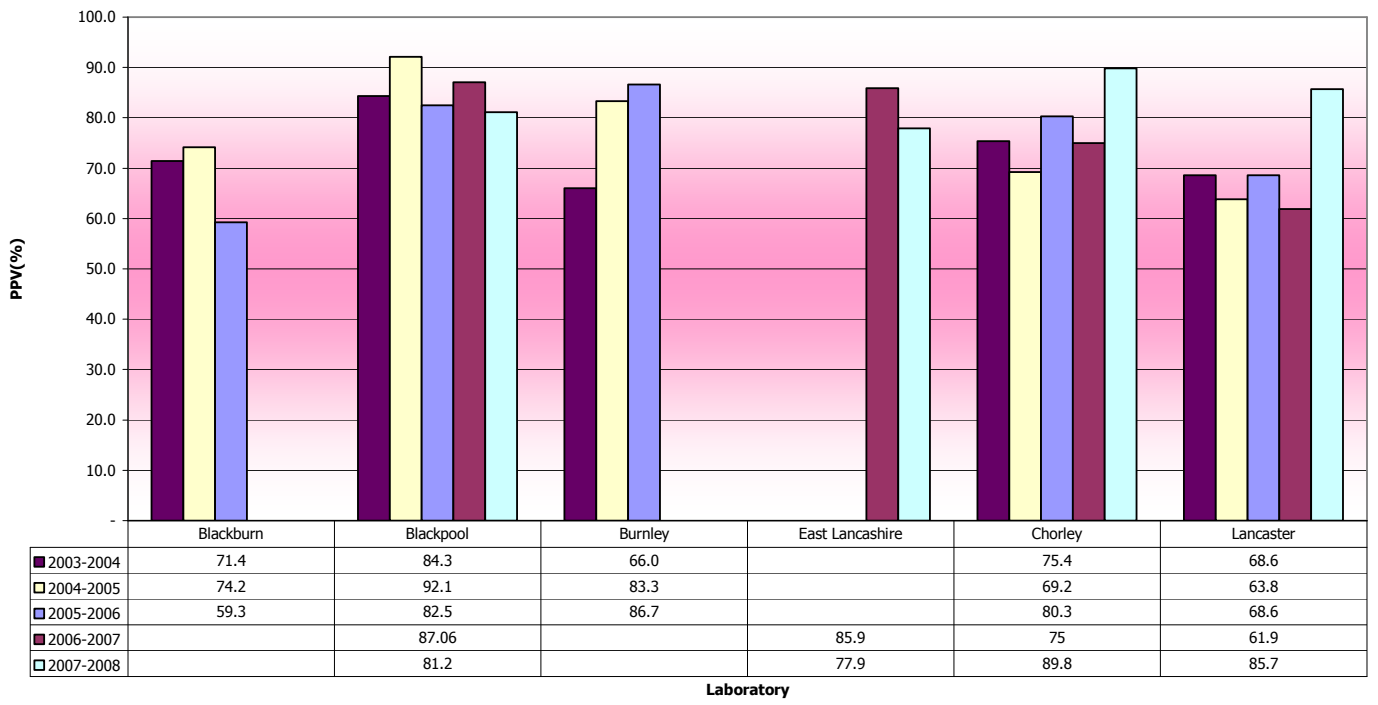
Positive Predictive Value (C2) by Laboratory 2003-2008 for Greater Manchester & Cheshire Cancer Network.

Standard 70.7% to 88.9%



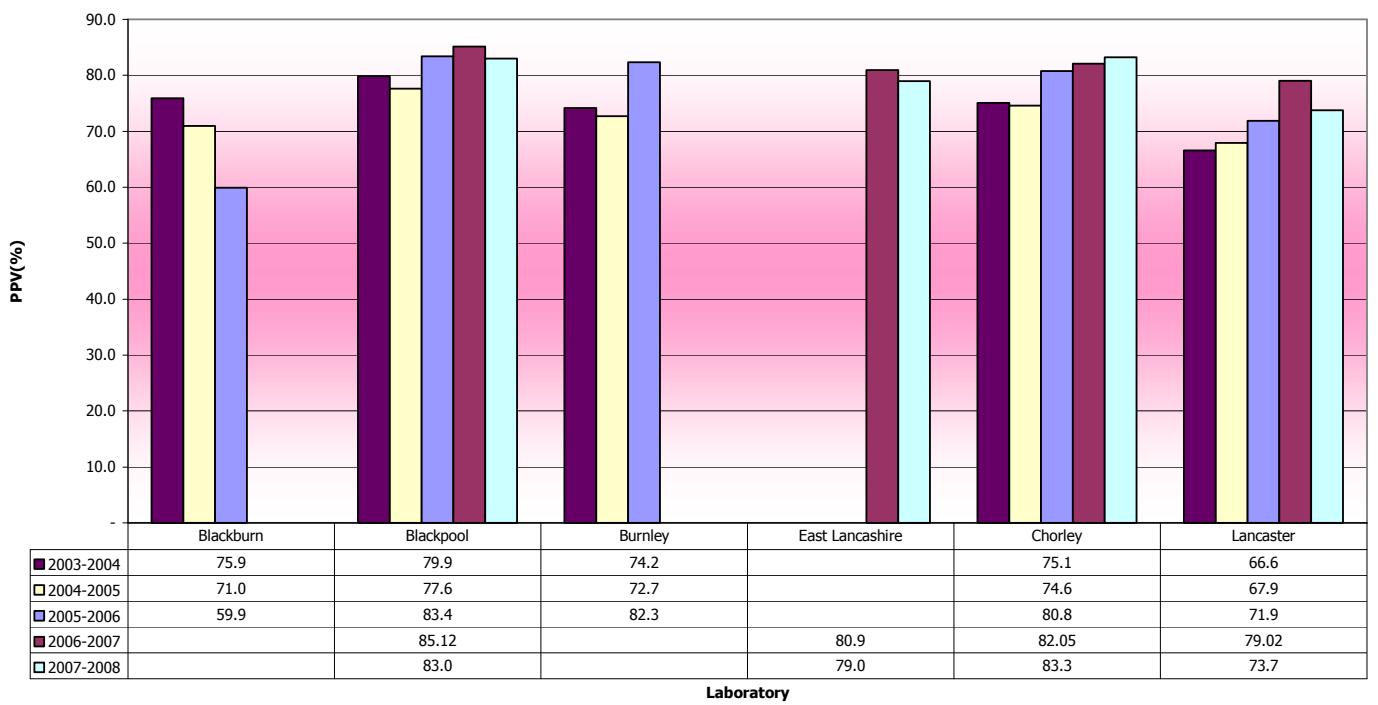
Positive Predictive Value (C1) by Laboratory 2003-2008 for Lancashire & South Cumbria Cancer Network.

Standard 70.7% to 88.9%



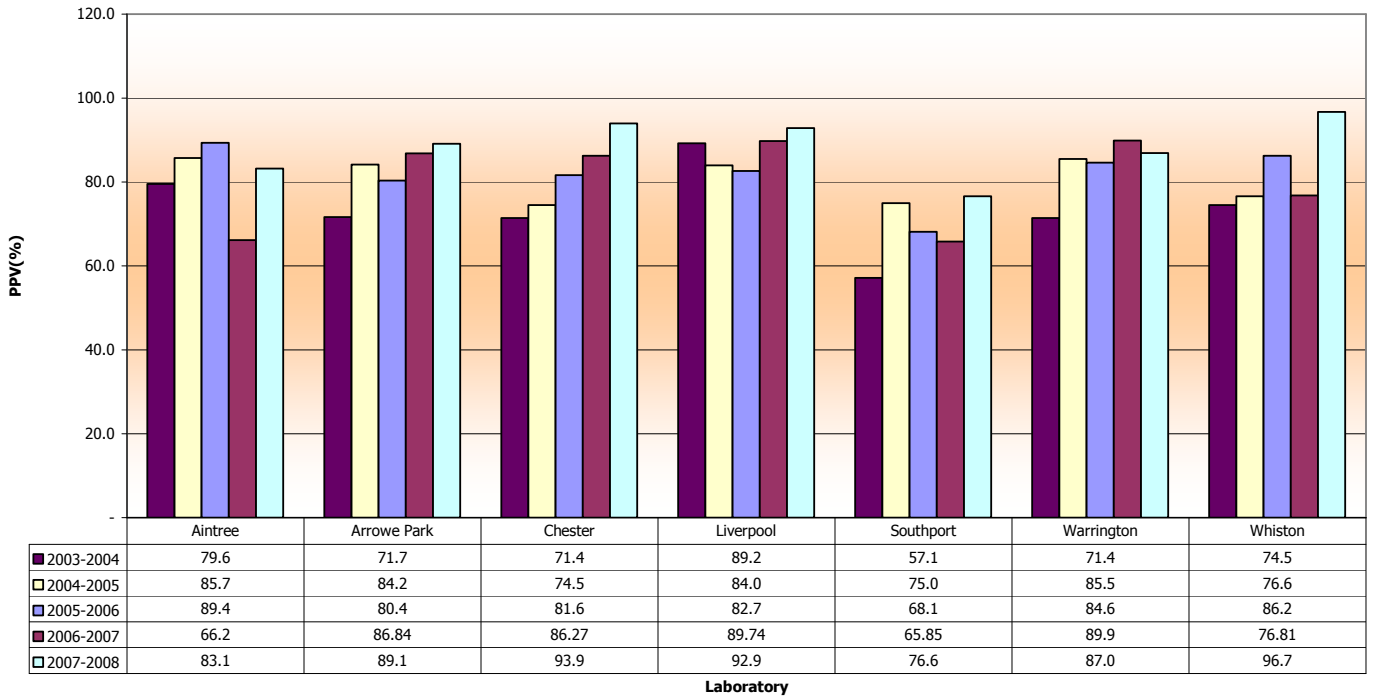
Positive Predictive Value (C2) by Laboratory 2003-2008 for Lancashire & South Cumbria Cancer Network.

Standard 70.7% to 88.9%



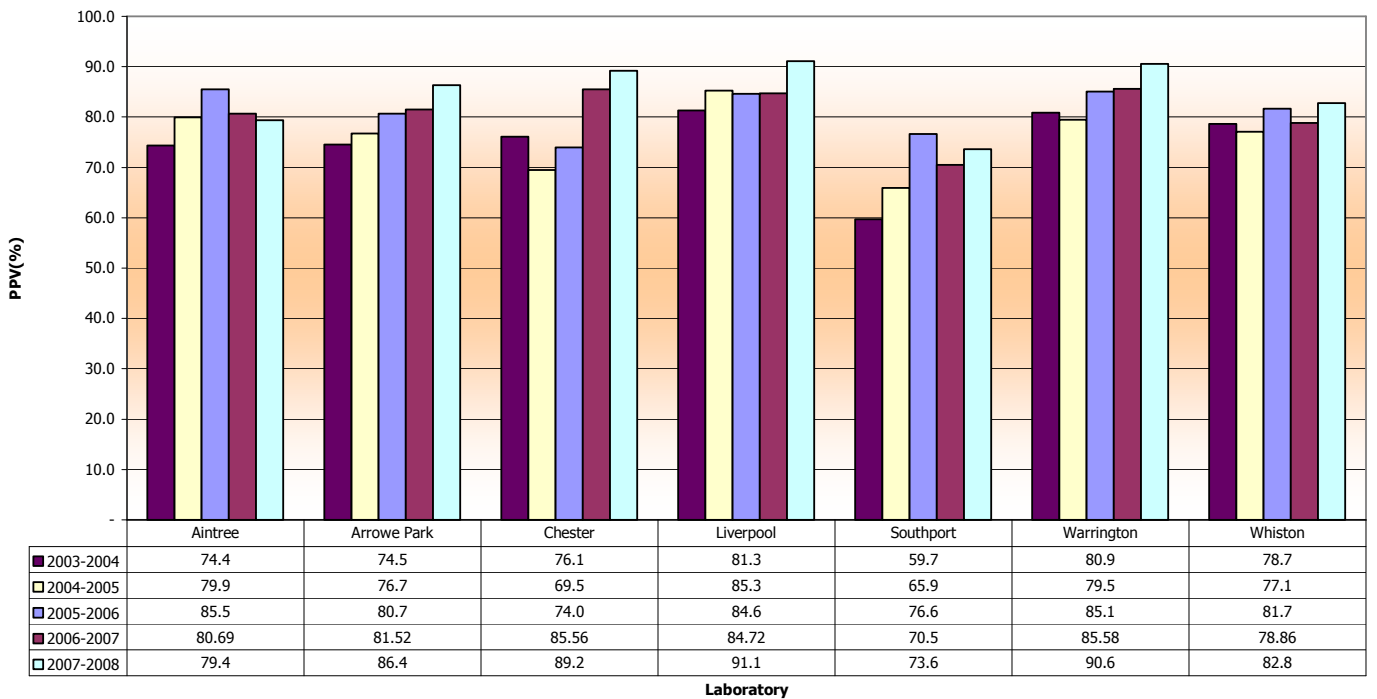
Positive Predictive Value (C1) by Laboratory 2003-2008 for Merseyside & Cheshire Cancer Network.

Standard 70.7% to 88.9%



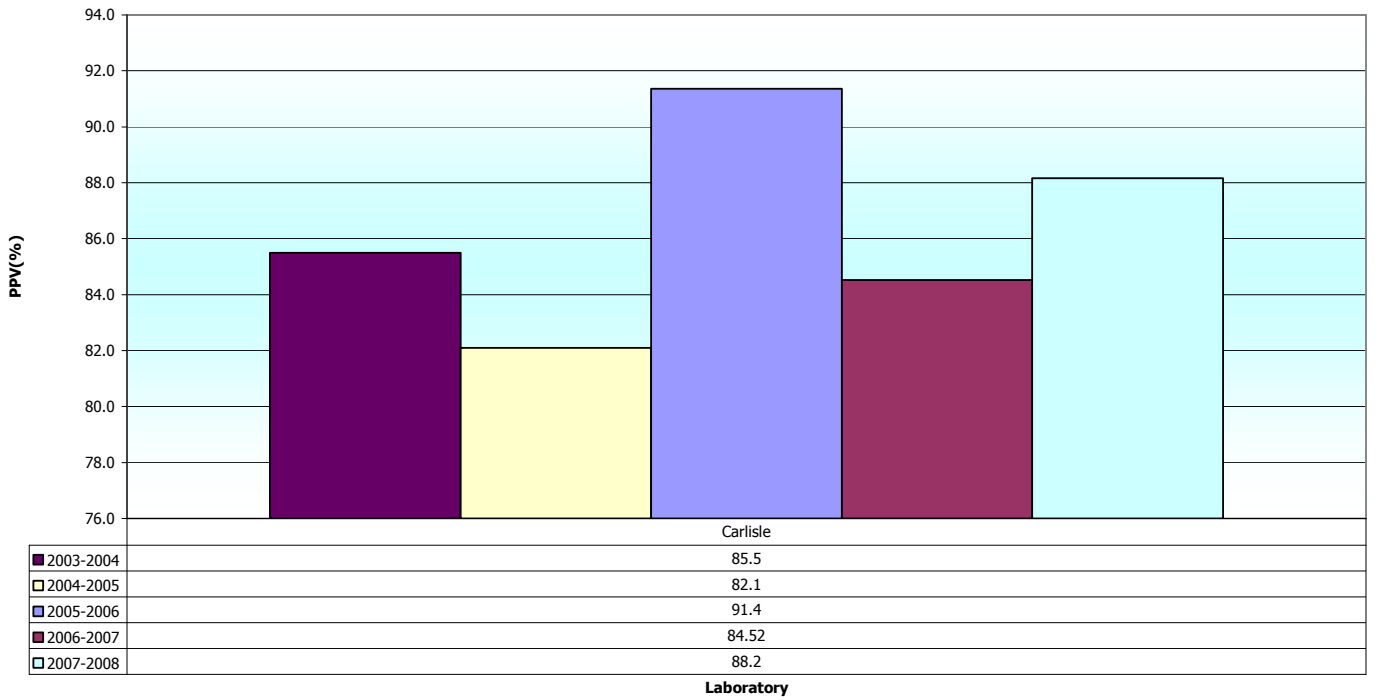
Positive Predictive Value (C2) by Laboratory 2003-2008 for Merseyside & Cheshire Cancer Network.

Standard 70.7% to 88.9%



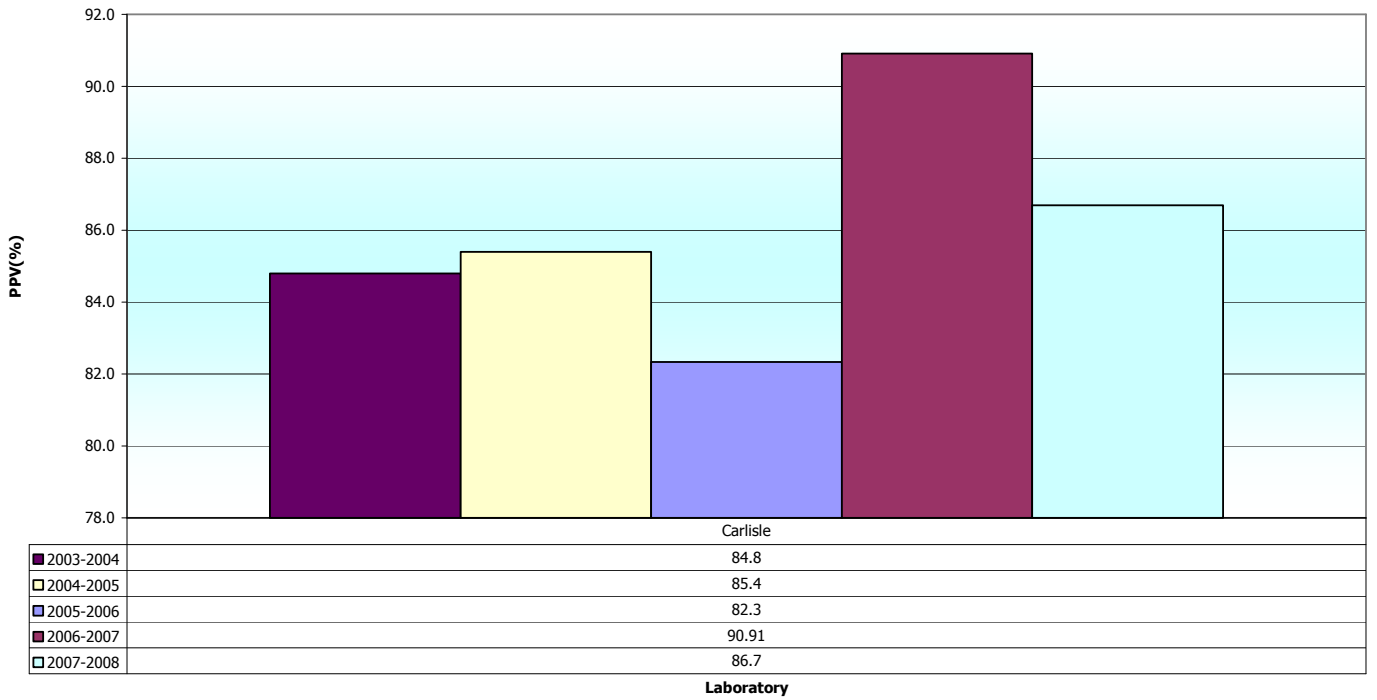
Positive Predictive Value (C1) by Laboratory 2003-2008 for Northern Cancer Network.

Standard 70.7% to 88.9%



Positive Predictive Value (C2) by Laboratory 2003-2008 for Northern Cancer Network.

Standard 70.7% to 88.9%



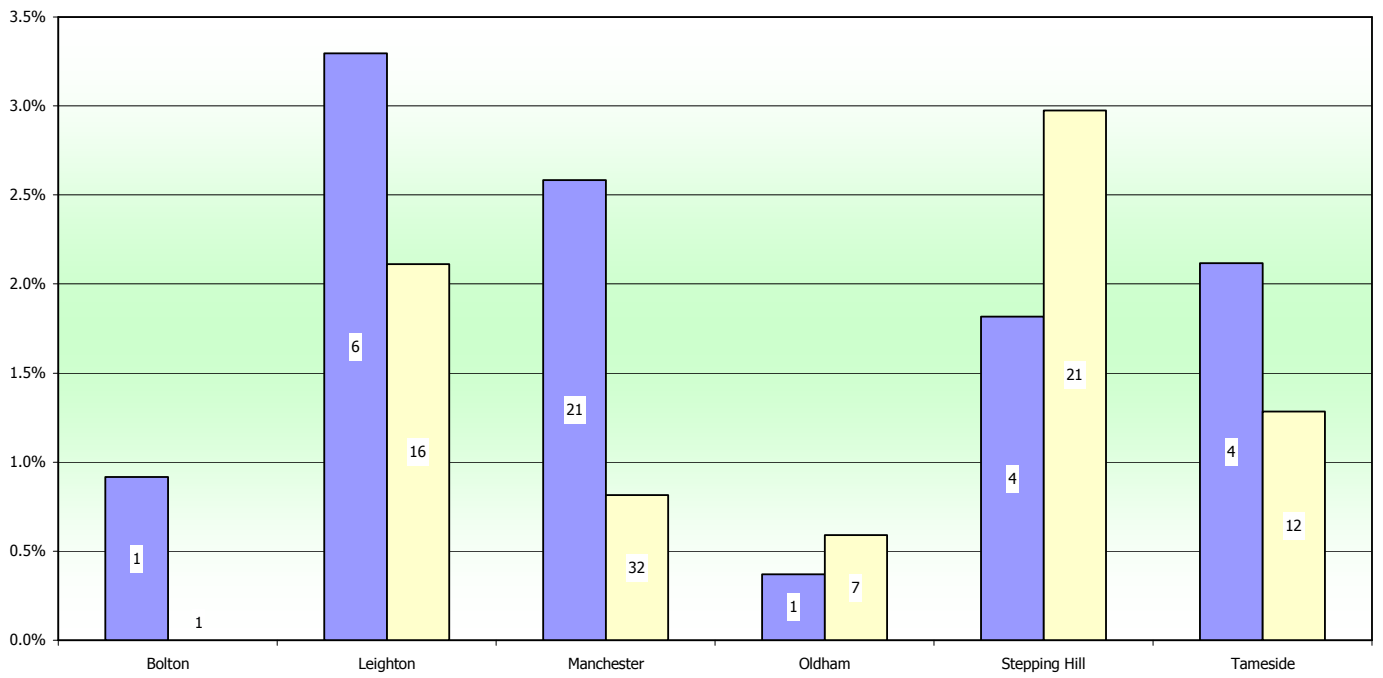
KC61 Parts C1 & C2 Lost to follow up as a percentage (target < 5%) and number

Laboratory by Cancer Network		Lost to follow up (C1)		Lost to follow up (C2)	
		%	number	%	number
Lancs & S Cumbria	Blackpool	4.3%	8	4.7%	36
	Chorley	2.7%	5	2.3%	19
	East Lancash	0.0%	0	0.5%	7
	Lancaster	6.9%	7	4.7%	20
Manchester & Cheshire	Bolton	0.9%	1	0.0%	0
	Leighton	3.3%	6	2.1%	16
	Manchester	2.6%	21	0.8%	32
	Oldham	0.4%	1	0.6%	7
	Stepping Hill	1.8%	4	3.0%	21
	Tameside	2.1%	4	1.3%	12
Merseyside & Cheshire	Aintree	1.0%	3	0.6%	6
	Arrowe Park	0.0%	0	0.1%	1
	Chester	0.8%	1	4.4%	28
	Liverpool	4.2%	6	2.5%	16
	Southport	9.3%	15	1.7%	8
	Warrington	1.2%	2	2.1%	17
	Whiston	0.8%	1	0.2%	1
Northern	Carlisle	2.2%	4	1.4%	10

KC61 Parts C1 & C2 - Lost to follow up as a percentage (number in columns equals number of women).
Greater Manchester & Cheshire Cancer Network

Target < 5%

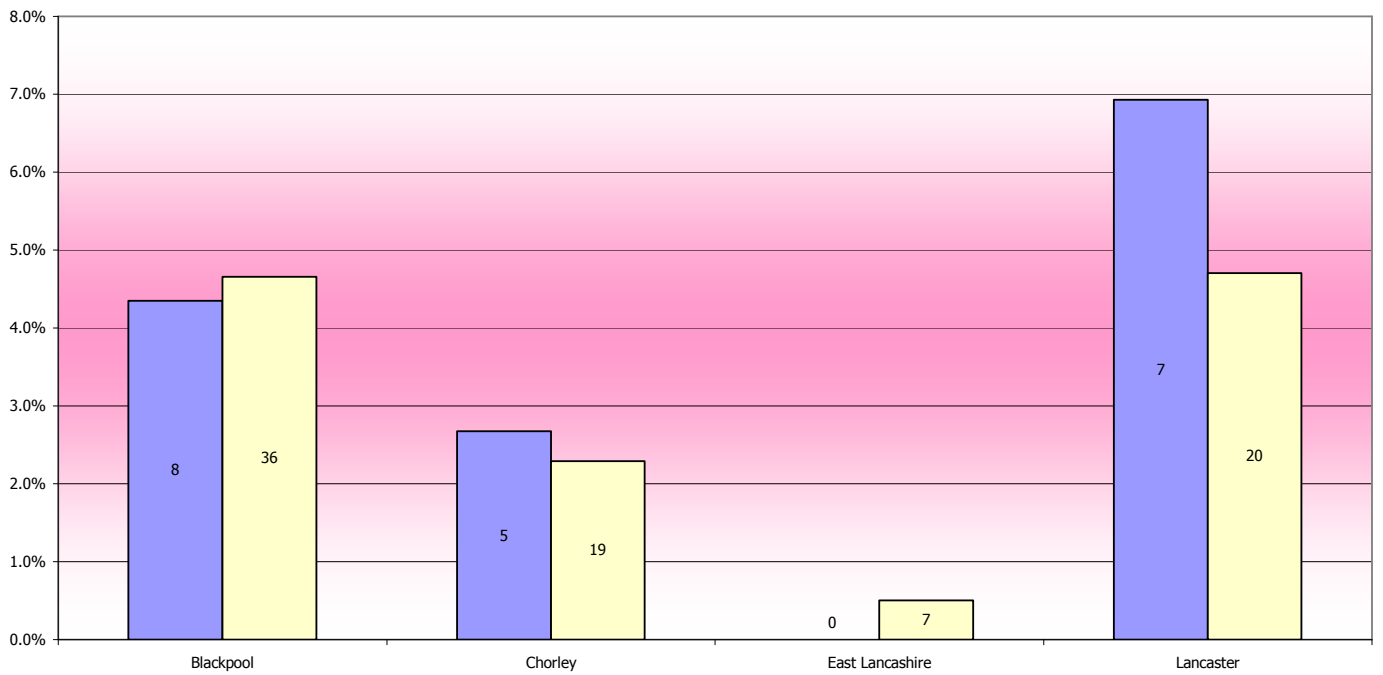
■ Lost to follow up (C1) % □ Lost to follow up (C2) %



KC61 Parts C1 & C2 - Lost to follow up as a percentage (number in columns equals number of women). Lancashire & South Cumbria Cancer Network

Target < 5%

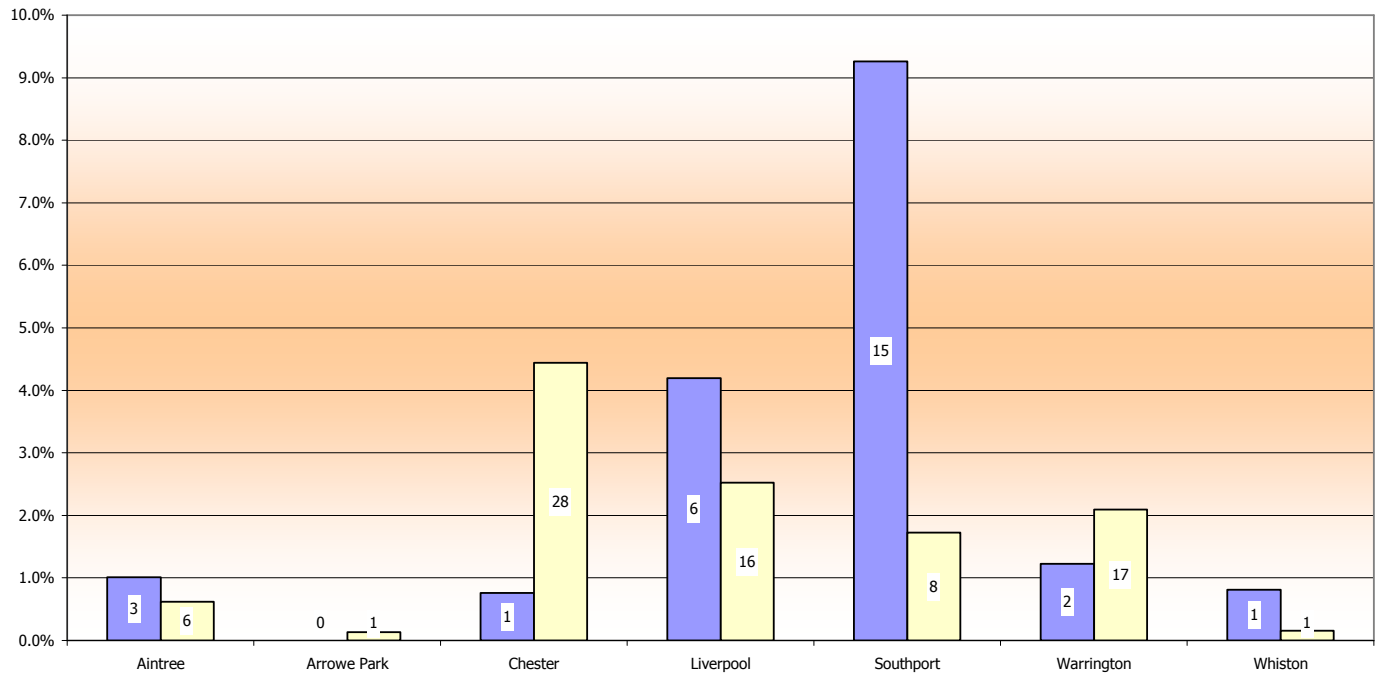
■ Lost to follow up (C1) % □ Lost to follow up (C2) %



KC61 Parts C1 & C2 - Lost to follow up as a percentage (number in columns equals number of women).
Merseyside & Cheshire Cancer Network

Target < 5%

■ Lost to follow up (C1) % □ Lost to follow up (C2) %



Measuring laboratory performance in the North West

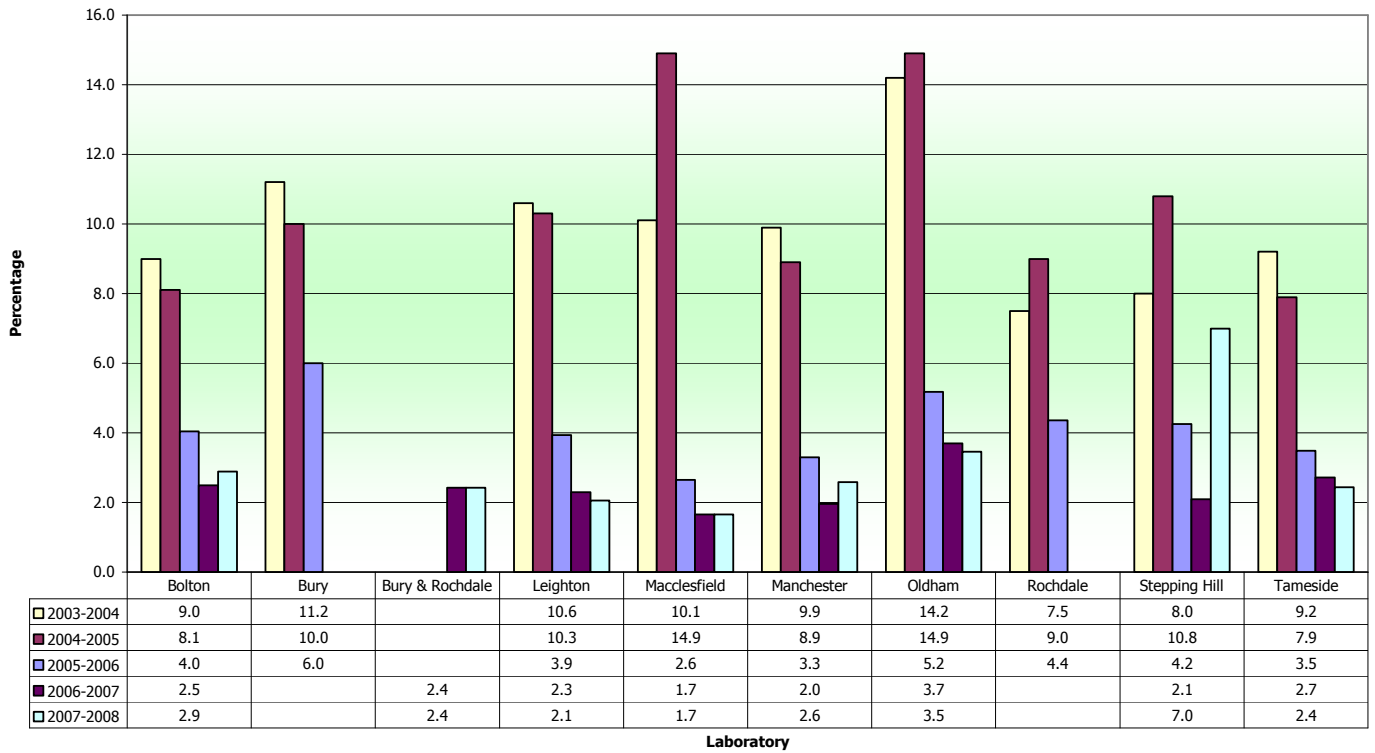
2003-04 to 2007-08

Inadequate Smears

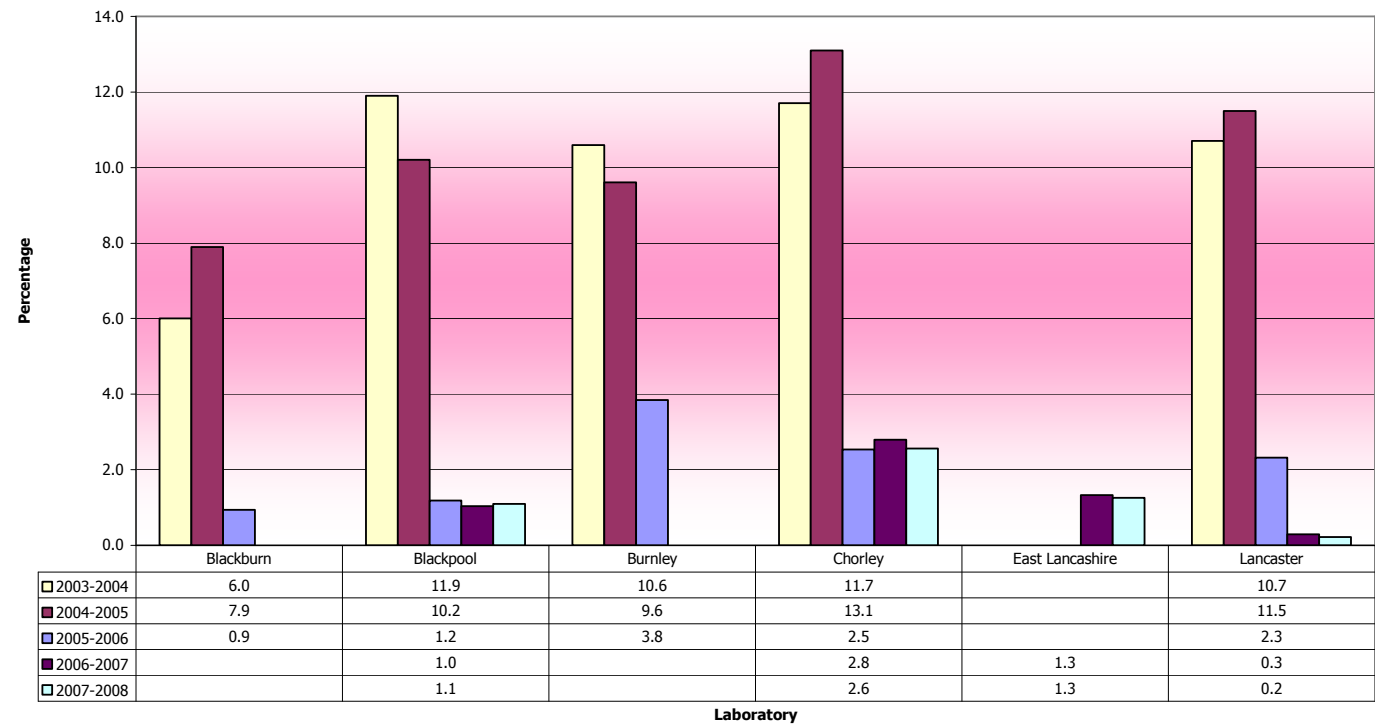
Laboratory by Cancer Network		Inadequate Rate (%)				
		2007-2008	2006-2007	2005-2006	2004-2005	2003-2004
		(%)	(%)	(%)	(%)	(%)
Lancs & S Cumbria	Blackburn			0.9	7.9	6.0
	Blackpool	1.1	1.0	1.2	10.2	11.9
	Burnley			3.8	9.6	10.6
	Chorley	2.6	2.8	2.5	13.1	11.7
	East Lancashire	1.3	1.3			
	Lancaster	0.2	0.3	2.3	11.5	10.7
Manchester & Cheshire	Bolton	2.9	2.5	4.0	8.1	9.0
	Bury			6.0	10.0	11.2
	Bury & Rochdale	2.4	2.4			
	Leighton	2.1	2.3	3.9	10.3	10.6
	Macclesfield	1.7	1.7	2.6	14.9	10.1
	Manchester	2.6	2.0	3.3	8.9	9.9
	Oldham	3.5	3.7	5.2	14.9	14.2
	Rochdale			4.4	9.0	7.5
	Stepping Hill	7.0	2.1	4.2	10.8	8.0
	Tameside	2.4	2.7	3.5	7.9	9.2
Merseyside & Cheshire	Aintree	2.6	0.9	0.9	12.2	12.3
	Arrowe Park	2.4	1.9	2.0	12.9	12.5
	Chester	3.4	3.5	4.8	12.4	11.6
	Liverpool	6.1	7.4	5.0	15.0	15.4
	Southport	1.0	1.1	1.2	10.2	10.6
	Warrington	3.8	1.5	5.5	14.3	10.8
	Whiston	1.8	1.5	7.0	17.9	15.0
Northern	Carlisle	0.9	0.5	0.6	5.7	5.8
Average		2.6	2.2	3.4	11.3	10.7

Source Cervical Screening Programme, England:2007-08 Bulletin: Table 19 © 2008, The Information Centre

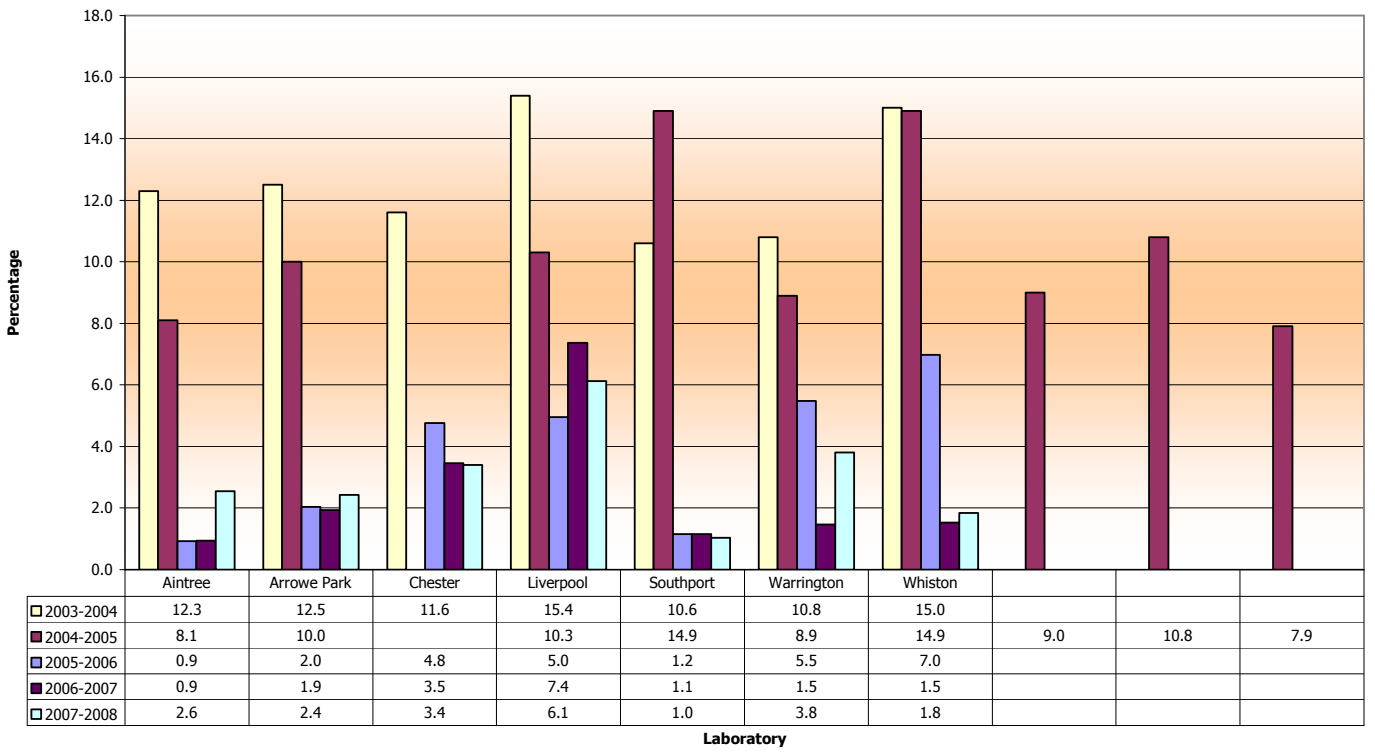
Inadequate Rates by Laboratory 2003-2008 for Greater Manchester & Cheshire Cancer Network



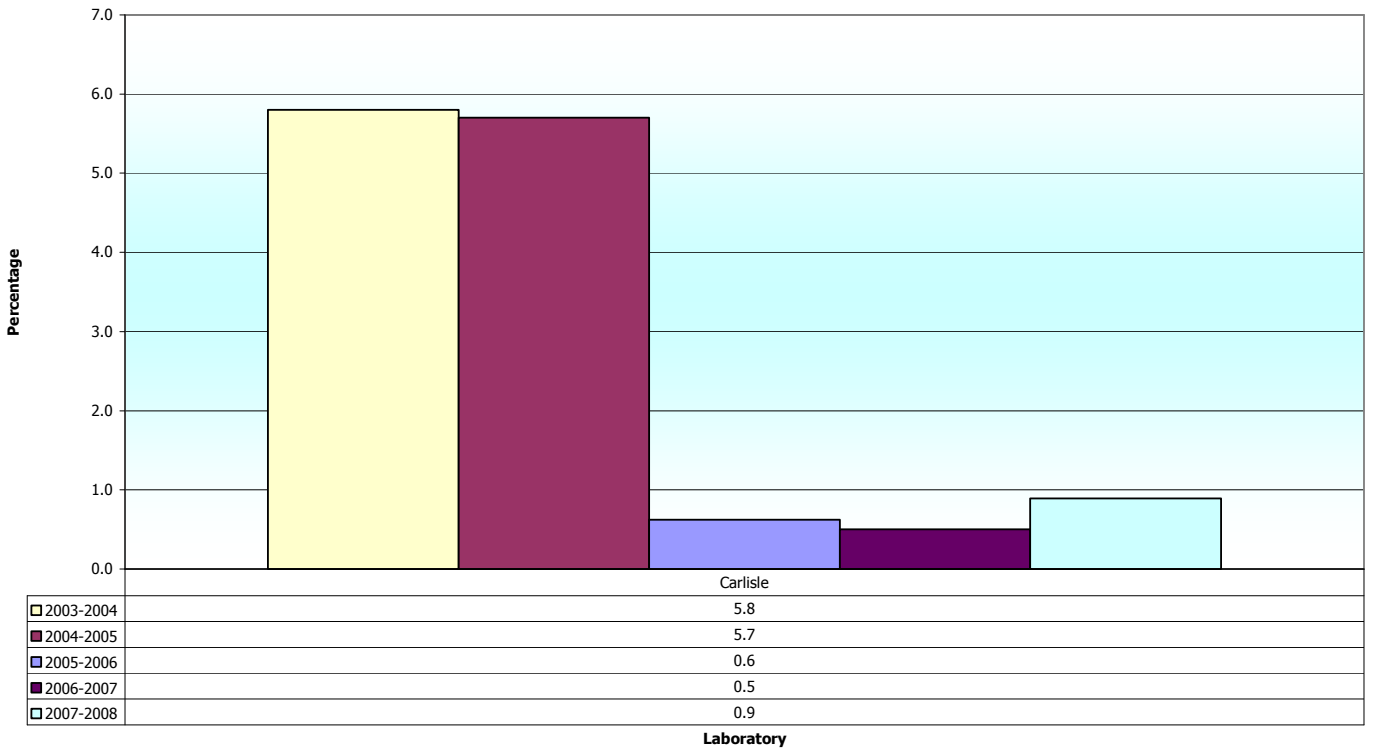
Inadequate Rates by Laboratory 2003-2008 for Lancashire & South Cumbria Cancer Network



Inadequate Rates by Laboratory 2003-2008 for Merseyside & Cheshire Cancer Network



Inadequate Rates by Laboratory 2003-2008 for Northern Cancer Network



DOH Return KC65

Measuring Colposcopy clinic
performance in the North West

1st April 2007 to 31st March 2008

Percentage of all referrals seen within 8 weeks (standard 90%)

Colposcopy unit by Cancer Network		Apr 07 - Mar 08	Apr 06 - Mar 07	Apr 05 - Mar 06	Apr 04 - Mar 05
Lancs & S Cumbria	Blackburn	89	87	76	68
	Blackpool	87	88	91	57
	Burnley	96	90	95	76
	Furness	100	99	100	100
	Lancaster	98	96	91	94
	Sharoe Green	98	99	97	100
	Westmorland	99	91	89	85
Manchester & Cheshire	Bolton	93	74	83	82
	Bury	95	96	91	81
	Central Manchester	92	93	96	94
	Cumberland House	98	95	100	100
	Dawes Family Practice**	100	100	100	100
	Hope Hospital	97	97	92	77
	Leighton	99	90	82	93
	Macclesfield	88	85	86	63
	Monarch Medical Centre**	100	100	100	92
	North Manchester	98	96	72	87
	Oldham	99	100	99	100
	Palatine Centre**	100	100	100	100
	Rochdale	88	89	94	73
	Stepping Hill	87	73	51	37
	Tameside	98	98	99	98
	Trafford	46	76	59	53
	Wigan	98	78	72	91
Withington	70	81	82	100	
Wythenshawe	97	99	99	97	
Merseyside & Cheshire	Aintree	100	100	86	78
	Arrowe Park	100	100	100	99
	Chester	100	93	69	86
	Liverpool	95	97	98	97
	LWH	99	99	100	99
	Southport & Formby	95	89	68	83
	Southport & Ormskirk	96	92	92	72
	Warrington	99	95	91	81
Whiston	96	93	97	95	
Northern	Cumberland Infirmary	80	94	97	96
	West Cumberland			57	49

North West Regional
Average
** GP based practices

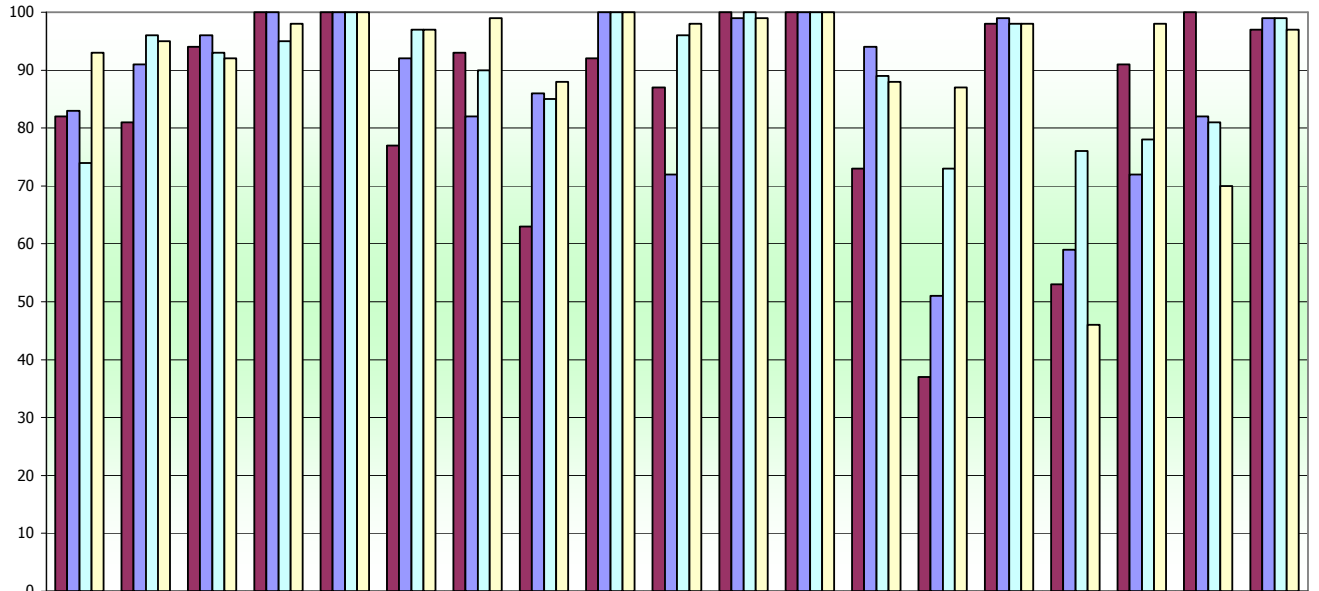
94

92

88

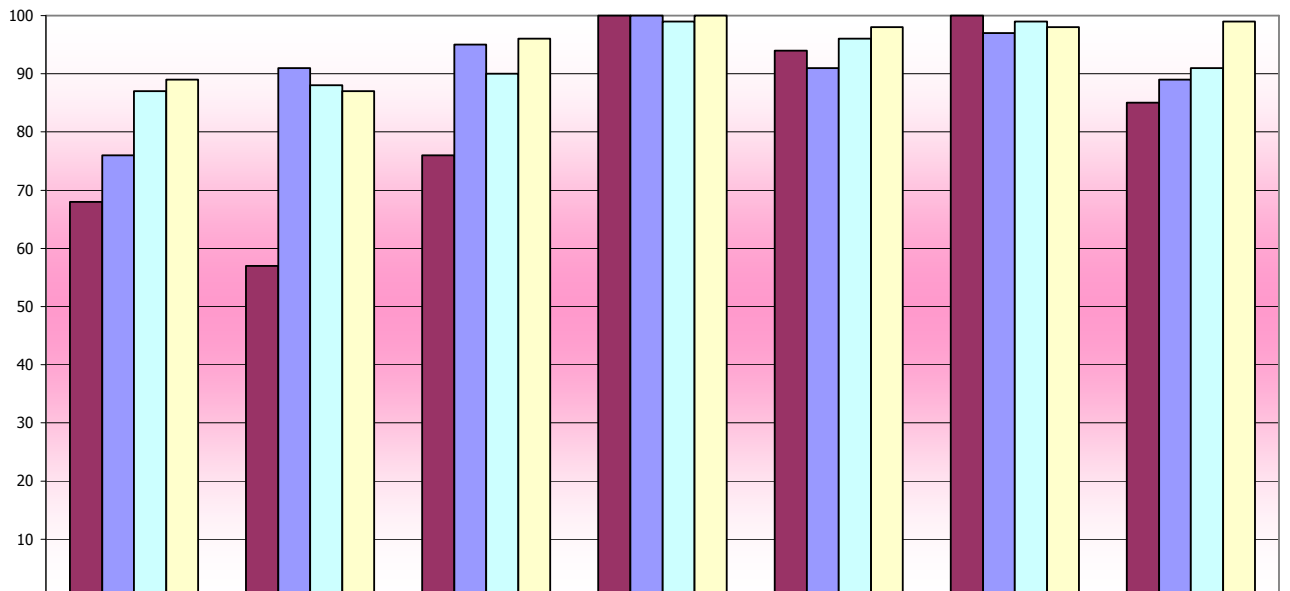
85

**Percentage of all referrals seen within 8 weeks (standard 90%) 2004-05 to 2007-08
Greater Manchester & Cheshire Cancer Network**



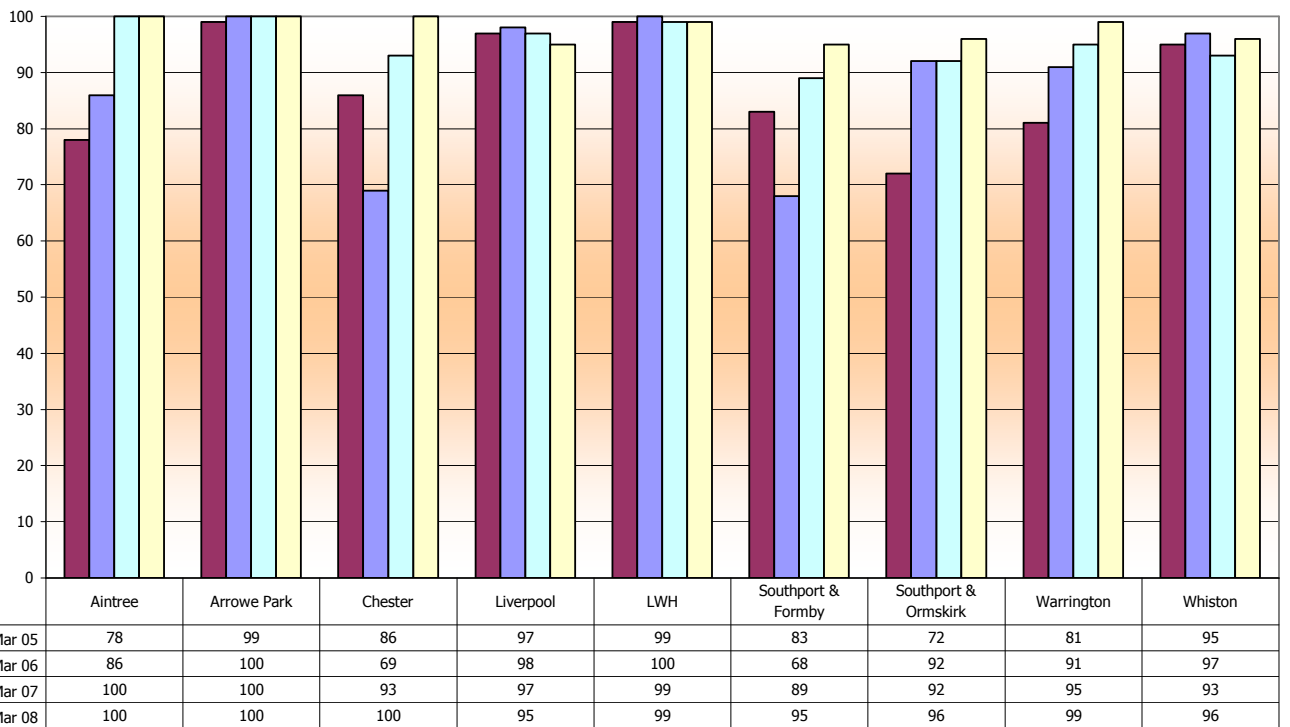
	Bolton	Bury	Central Manchester	Cumberland House	Dawes Family Practice**	Hope Hospital	Leighton	Macclesfield	Monarch Medical Centre**	North Manchester	Oldham	Palatine Centre**	Rochdale	Stepping Hill	Tameside	Trafford	Wigan	Withington	Wythenshawe
■ Apr 04 - Mar 05	82	81	94	100	100	77	93	63	92	87	100	100	73	37	98	53	91	100	97
■ Apr 05 - Mar 06	83	91	96	100	100	92	82	86	100	72	99	100	94	51	99	59	72	82	99
■ Apr 06 - Mar 07	74	96	93	95	100	97	90	85	100	96	100	100	89	73	98	76	78	81	99
■ Apr 07 - Mar 08	93	95	92	98	100	97	99	88	100	98	99	100	88	87	98	46	98	70	97

**Percentage of all referrals seen within 8 weeks (standard 90%) 2004-05 to 2007-08
Lancashire & South Cumbria Cancer Network**

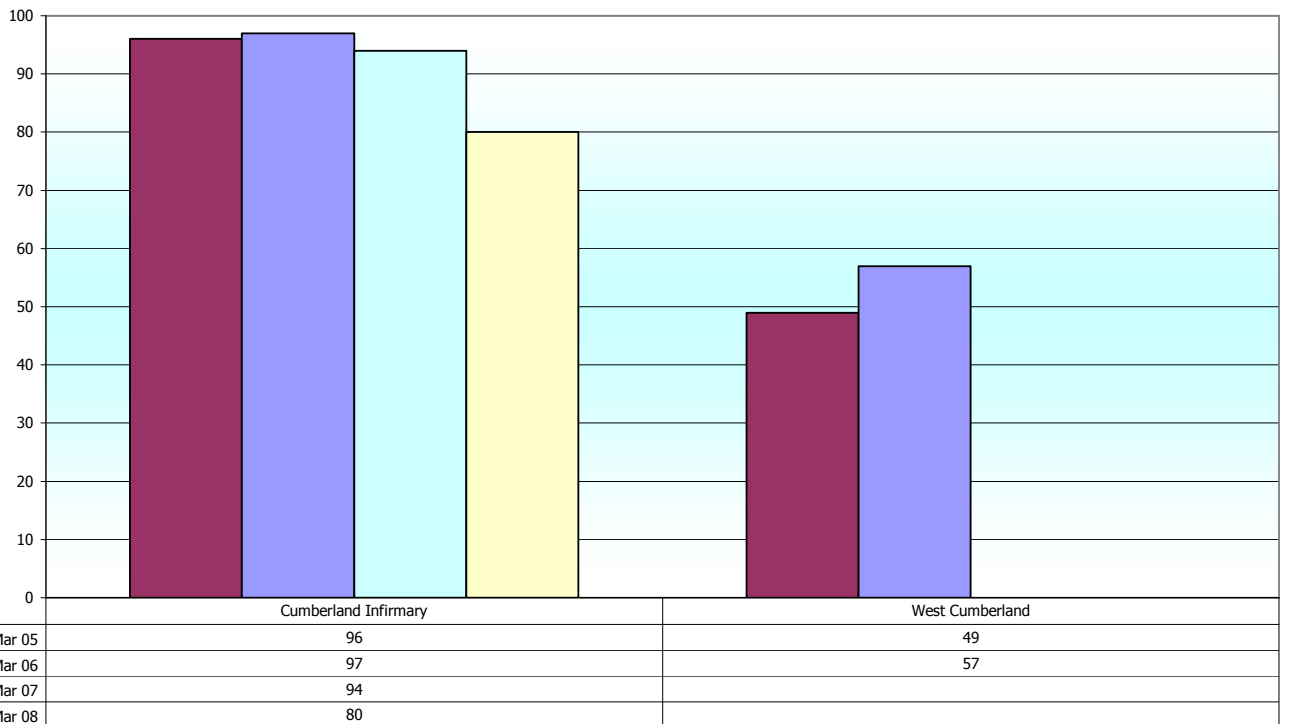


	Blackburn	Blackpool	Burnley	Furness	Lancaster	Sharoe Green	Westmorland
■ Apr 04 - Mar 05	68	57	76	100	94	100	85
■ Apr 05 - Mar 06	76	91	95	100	91	97	89
■ Apr 06 - Mar 07	87	88	90	99	96	99	91
■ Apr 07 - Mar 08	89	87	96	100	98	98	99

**Percentage of all referrals seen within 8 weeks (standard 90%) 2004-05 to 2007-08
Merseyside & Cheshire Cancer Network**



**Percentage of all referrals seen within 8 weeks (standard 90%) 2004-05 to 2007-08
Northern Cancer Network**



Percentage of moderate & above seen within 4 weeks (standard 90%)

Colposcopy unit by Cancer Network		Apr 07 - Mar 08	Apr 06 - Mar 07	Apr 05 - Mar 06	Apr 04 - Mar 05
Lancs & S Cumbria	Blackburn	69	64	47	34
	Blackpool	69	69	76	66
	Burnley	64	70	75	49
	Furness	98	98	92	95
	Lancaster	81	81	76	94
	Sharoe Green	88	85	87	95
	Westmorland	74	78	63	47
Manchester & Cheshire	Bolton	65	48	37	43
	Bury	69	92	71	48
	Central Manchester	59	57	72	89
	Cumberland House	52	64	61	81
	Dawes Family Practice**	98	94	87	80
	Hope Hospital	90	59	73	64
	Leighton	84	85	75	88
	Macclesfield	65	63	65	44
	Monarch Medical Centre**	75	66	n/a	100
	North Manchester	92	82	59	71
	Oldham	98	97	99	92
	Palatine Centre**	100	97	100	100
	Rochdale	55	63	78	48
	Stepping Hill	64	50	21	25
	Tameside	100	97	97	97
	Trafford	42	70	55	49
	Wigan	68	51	26	50
Withington	61	47	46	84	
Wythenshawe	94	93	94	91	
Merseyside & Cheshire	Aintree	96	96	95	66
	Arrowe Park	100	98	97	96
	Chester	95	77	50	53
	Liverpool	92	85	100	99
	LWH	93	94	99	99
	Southport & Formby	82	75	47	39
	Southport & Ormskirk	88	82	81	50
	Warrington	93	82	66	53
	Whiston	77	66	79	81
Northern	Cumberland Infirmary	66	77	72	72
	West Cumberland			35	11

North West Regional
Average

79

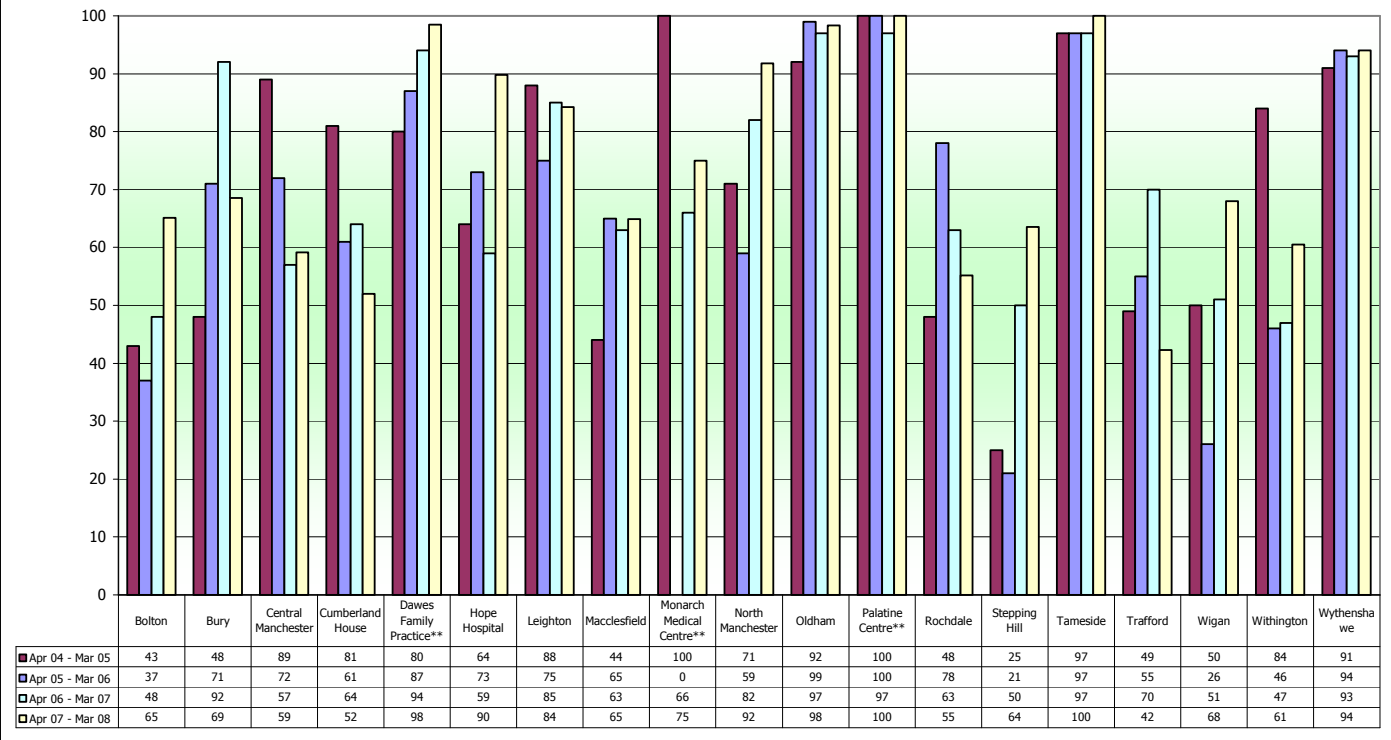
76

71

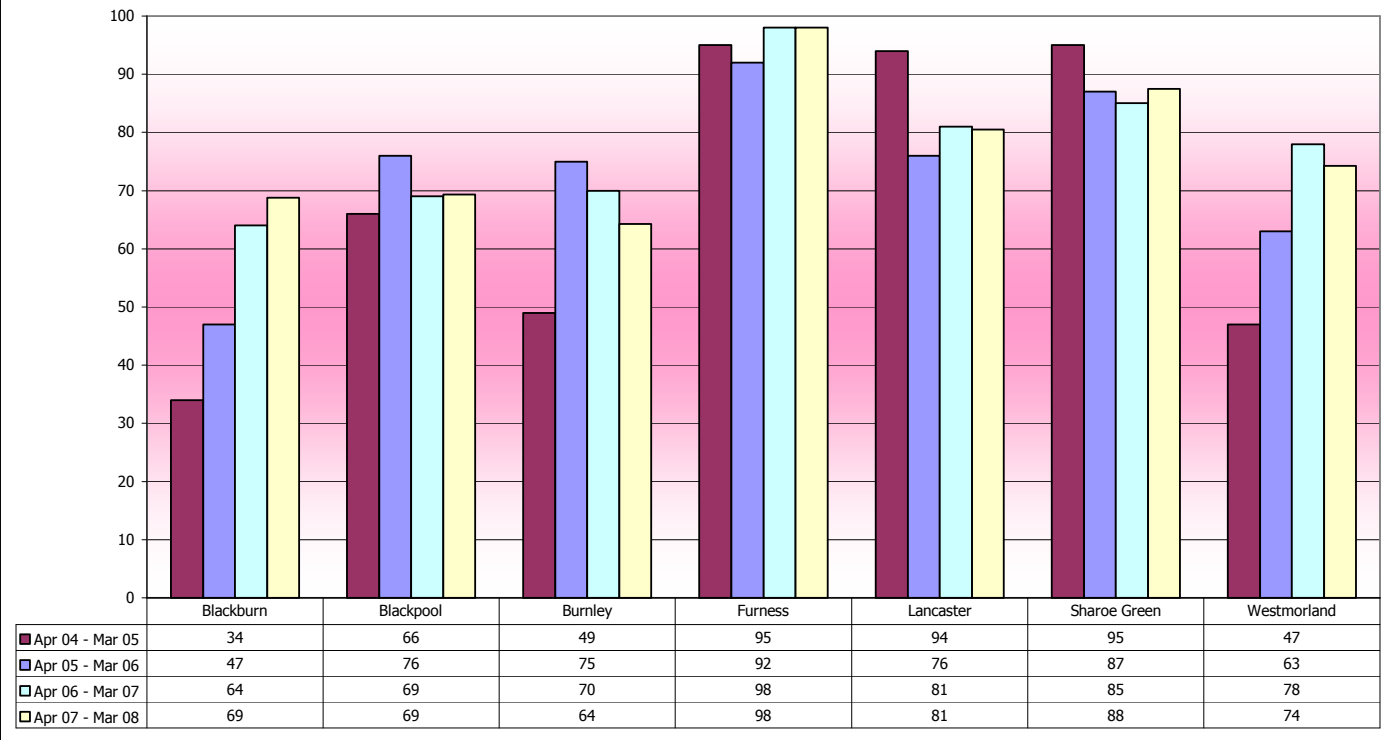
69

** GP based practices

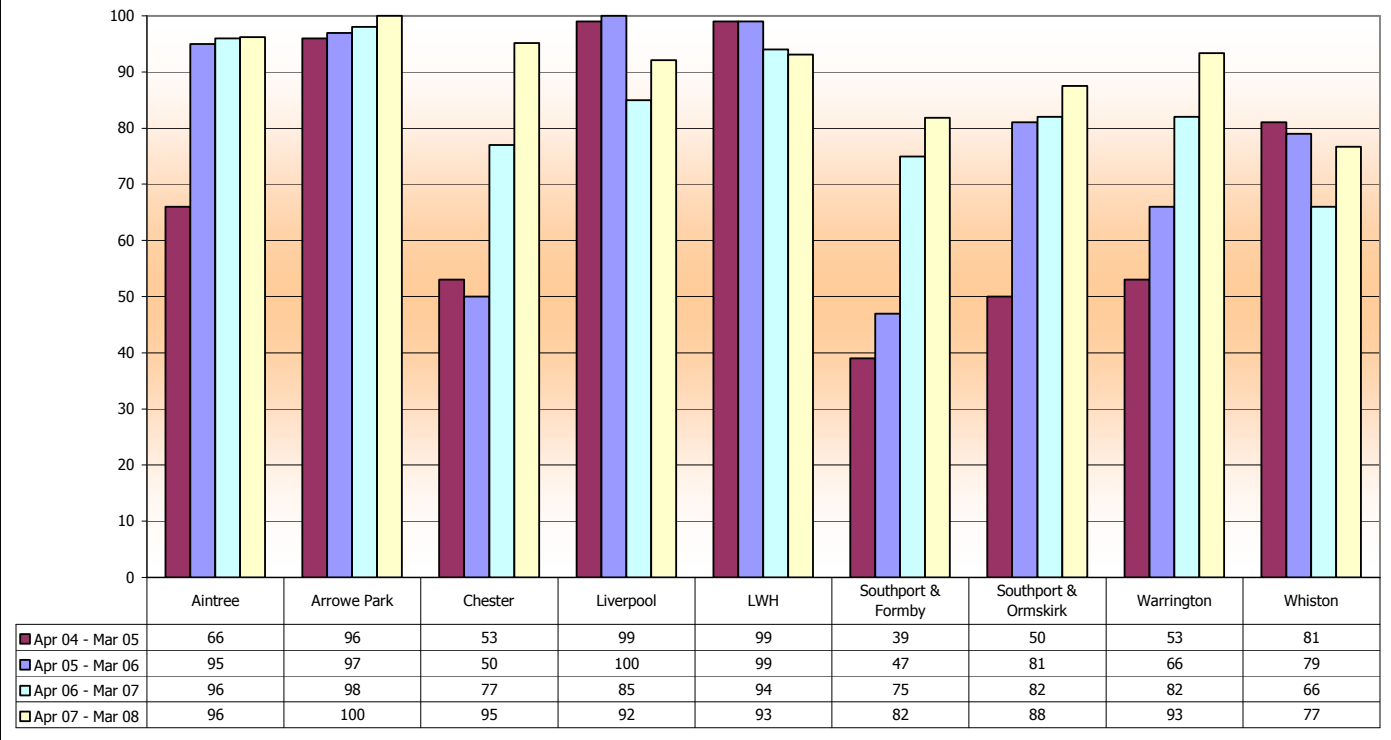
**Percentage of moderate/severe referrals seen within 4 weeks (standard 90%) 2004-05 to 2007-08
Greater Manchester & Cheshire Cancer Network**



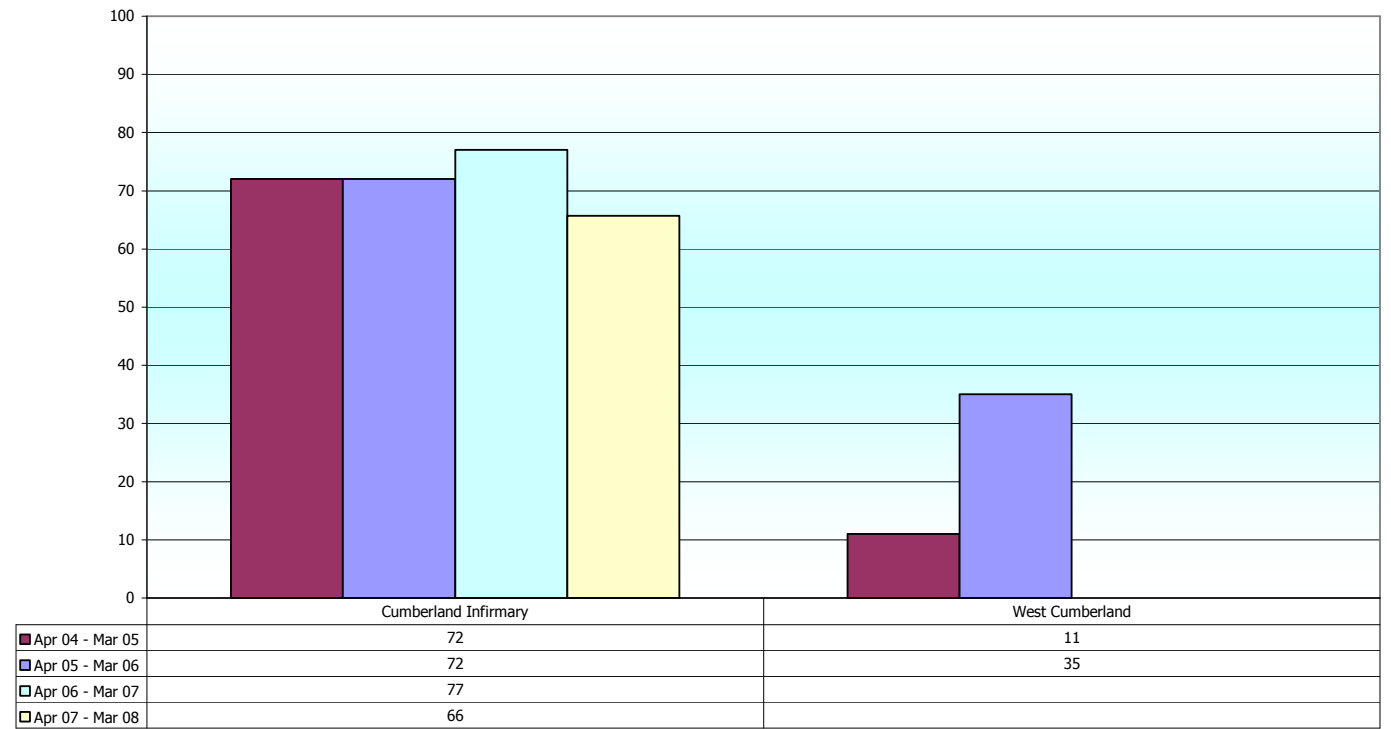
**Percentage of moderate/severe referrals seen within 4 weeks (standard 90%) 2004-05 to 2007-08
Lancashire & South Cumbria Cancer Network**



**Percentage of moderate/severe referrals seen within 4 weeks (standard 90%) 2004-05 to 2007-08
Merseyside & Cheshire Cancer Network**



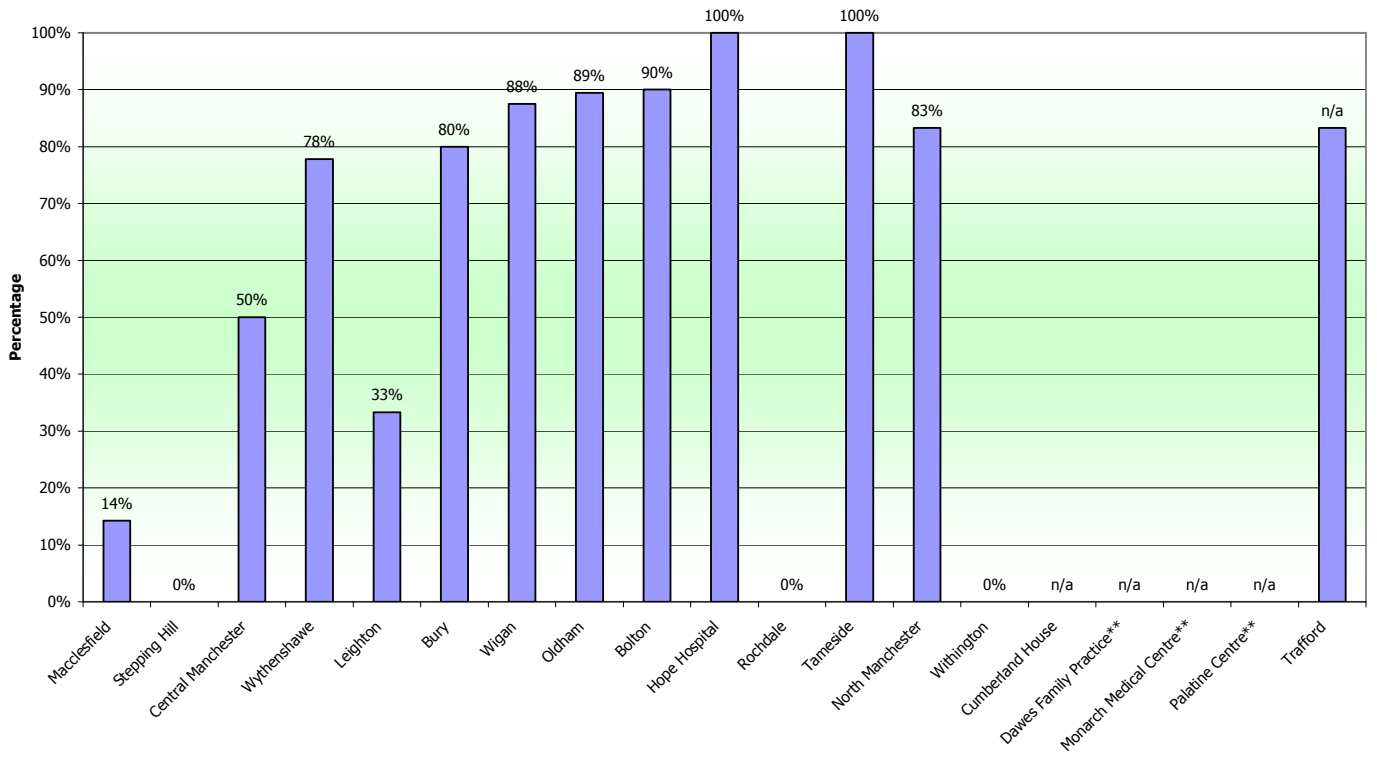
**Percentage of moderate/severe referrals seen within 4 weeks (standard 90%) 2004-05 to 2007-08
Northern Cancer Network**



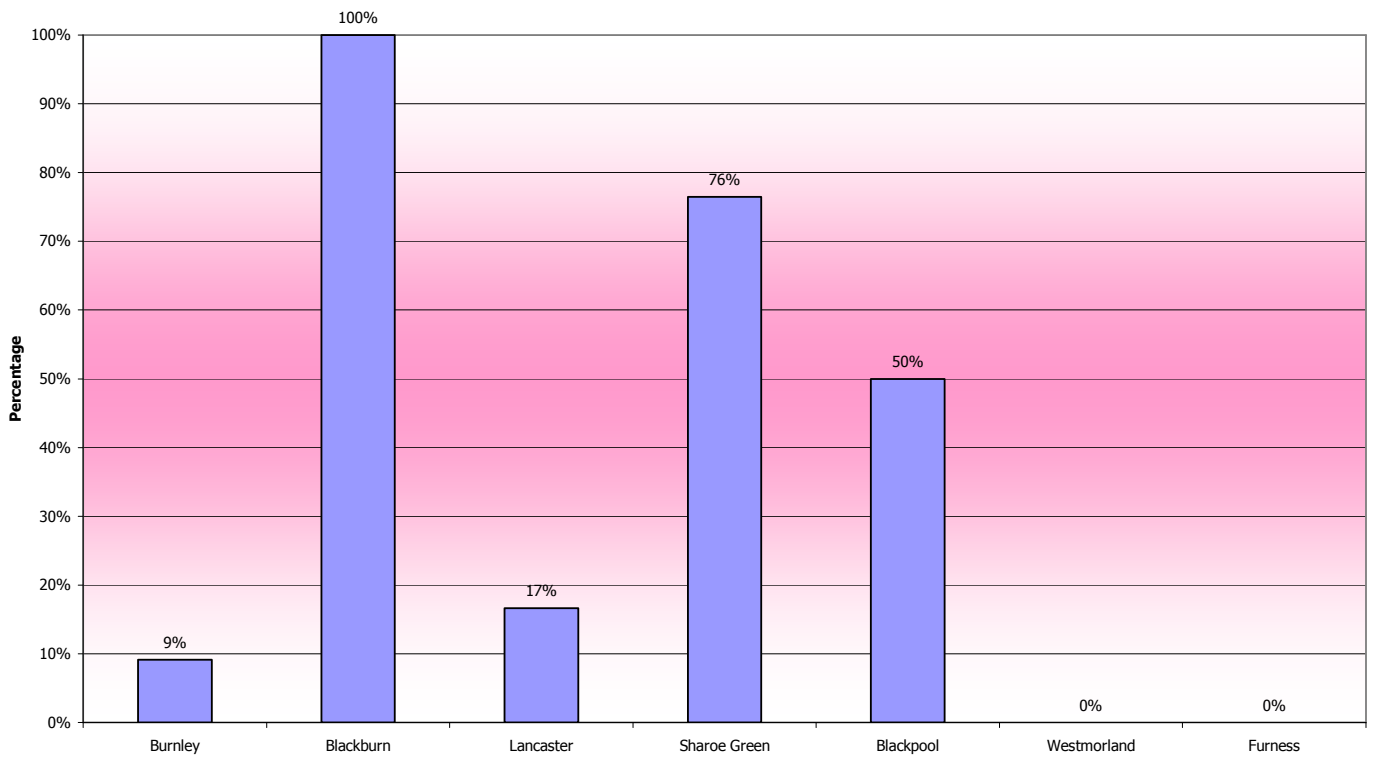
		within 2 weeks	Total	Percentage seen within 2 weeks (standard 90%)
Colposcopy unit by Cancer Network		Invasive or Glandula	Invasive or Glandula	Apr 07 - Mar 08
Lancs & S Cumbria	Burnley	1	11	9%
	Blackburn	1	1	100%
	Lancaster	1	6	17%
	Sharoe Green	13	17	76%
	Blackpool	5	10	50%
	Westmorland	0	1	0%
	Furness	0	0	n/a
Manchester & Cheshire	Macclesfield	1	7	14%
	Stepping Hill	0	1	0%
	Central Manchester	2	4	50%
	Wythenshawe	7	9	78%
	Leighton	1	3	33%
	Bury	4	5	80%
	Wigan	7	8	88%
	Oldham	17	19	89%
	Bolton	9	10	90%
	Hope Hospital	5	5	100%
	Rochdale	0	1	0%
	Tameside	9	9	100%
	North Manchester	5	6	83%
	Withington	0	0	n/a
	Cumberland House	0	0	n/a
	Dawes Family Practice**	0	0	n/a
	Monarch Medical Centre**	0	0	n/a
Palatine Centre**	0	0	n/a	
Trafford	5	6	83%	
Merseyside & Cheshire	Warrington	8	16	50%
	Chester	11	12	92%
	Whiston	4	12	33%
	LWH	7	8	88%
	Arrowe Park	9	10	90%
	Southport & Formby	0	1	0%
	Aintree	6	7	86%
	Southport & Ormskirk	3	3	100%
	Liverpool	0	0	n/a
Northern	Cumberland Infirmary	9	11	82%

** GP based practices

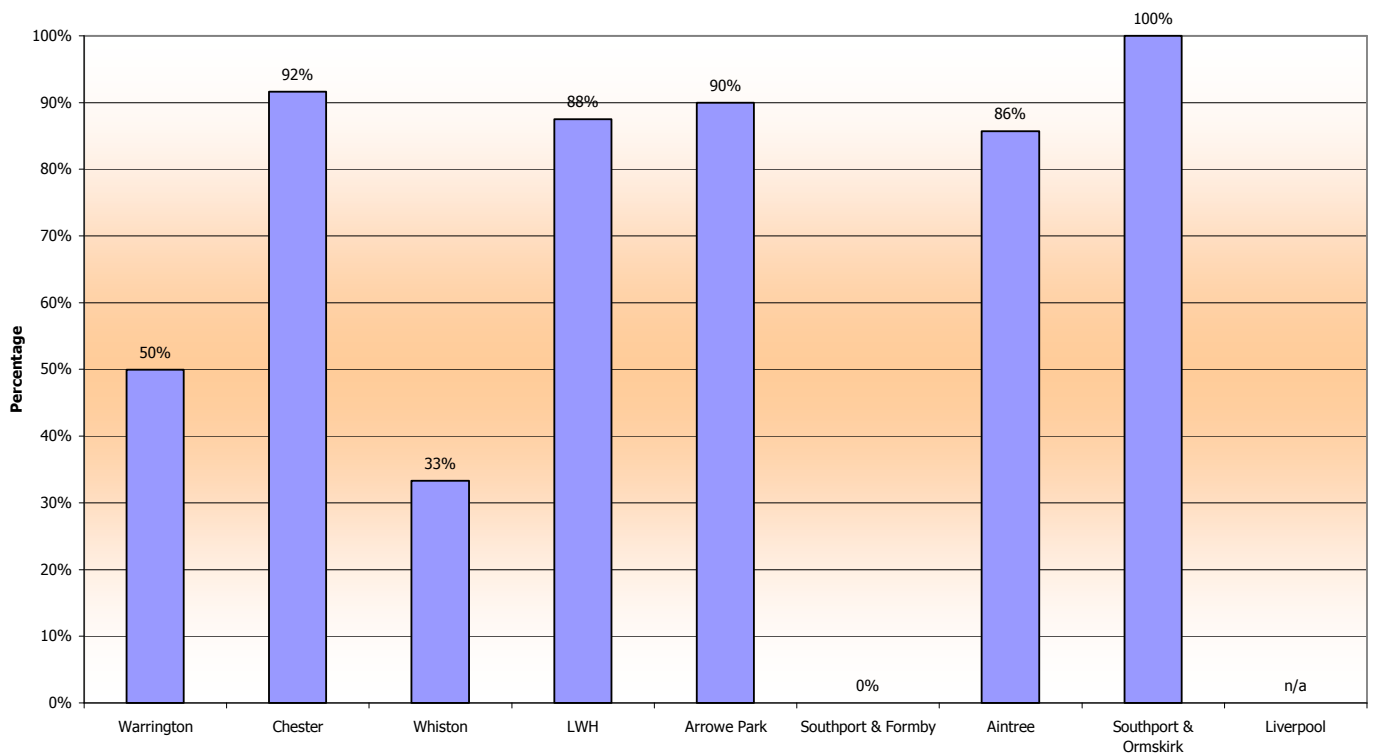
Percentage of all smears reported as possible invasive or glandular neoplasia seen within 2 weeks (standard 90%) for period Apr 07 - Mar 08
Greater Manchester & Cheshire Cancer Network



Percentage of all smears reported as possible invasive or glandular neoplasia seen within 2 weeks (standard 90%) for period Apr 07 - Mar 08
Lancashire & South Cumbria Cancer Network



Percentage of all smears reported as possible invasive or glandular neoplasia seen within 2 weeks (standard 90%) for period Apr 07 - Mar 08
Merseyside & Cheshire Cancer Network



DNA %

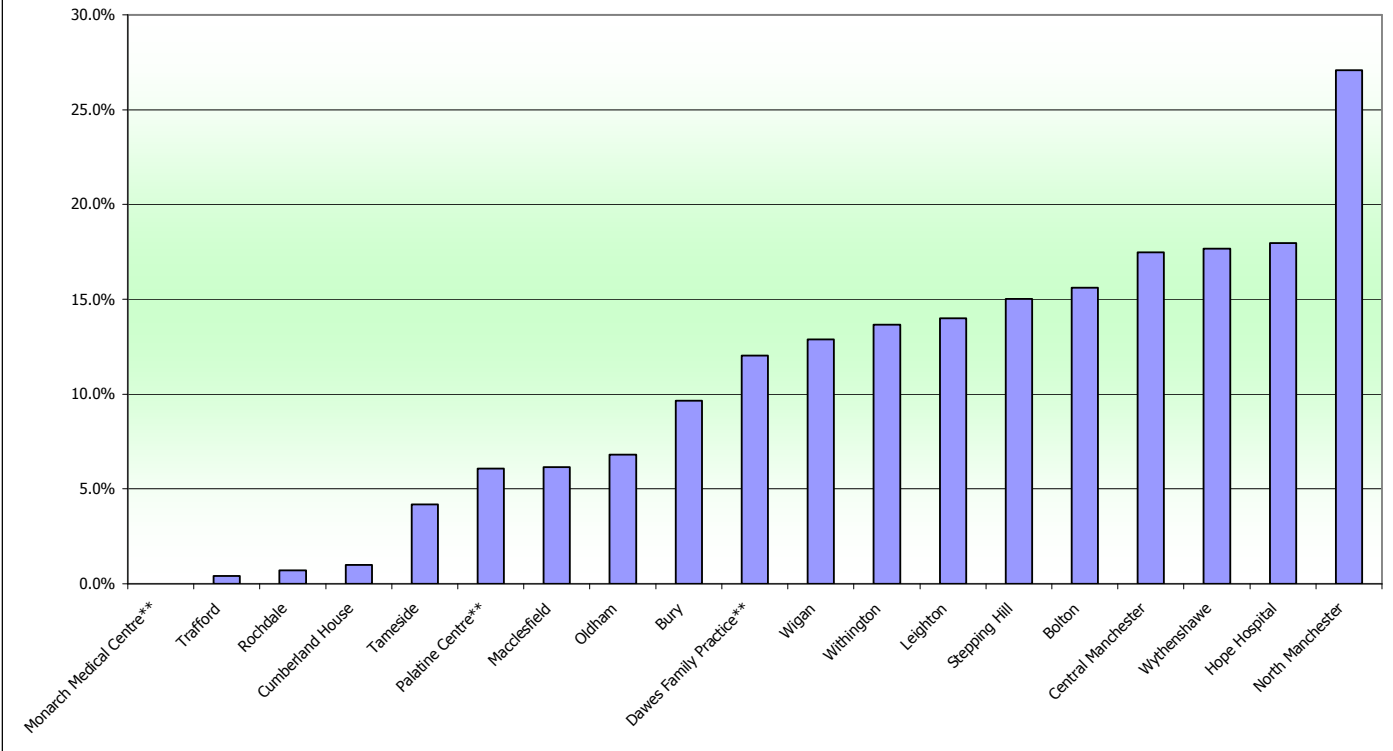
Colposcopy unit by Cancer Network		Apr 07 - Mar 08
Lancs & S Cumbria	Blackpool	not supplied
	Blackburn	6.2%
	Westmorland	7.0%
	Lancaster	8.7%
	Sharoe Green	10.9%
	Furness	12.6%
	Burnley	19.1%
Manchester & Cheshire	Monarch Medical Centre**	0.0%
	Trafford	0.4%
	Rochdale	0.7%
	Cumberland House	1.0%
	Tameside	4.2%
	Palatine Centre**	6.1%
	Macclesfield	6.1%
	Oldham	6.8%
	Bury	9.7%
	Dawes Family Practice**	12.0%
	Wigan	12.9%
	Withington	13.7%
	Leighton	14.0%
	Stepping Hill	15.0%
	Bolton	15.6%
	Central Manchester	17.5%
	Wythenshawe	17.7%
Hope Hospital	18.0%	
North Manchester	27.1%	
Merseyside & Cheshire	Southport & Formby	4.7%
	Southport & Ormskirk	6.7%
	Aintree	8.4%
	Warrington	9.0%
	Arrowe Park	11.1%
	LWH	12.8%
	Chester	14.7%
	Whiston	23.0%
	Liverpool	27.7%
Northern	Cumberland Infirmary	14.9%

NW Average

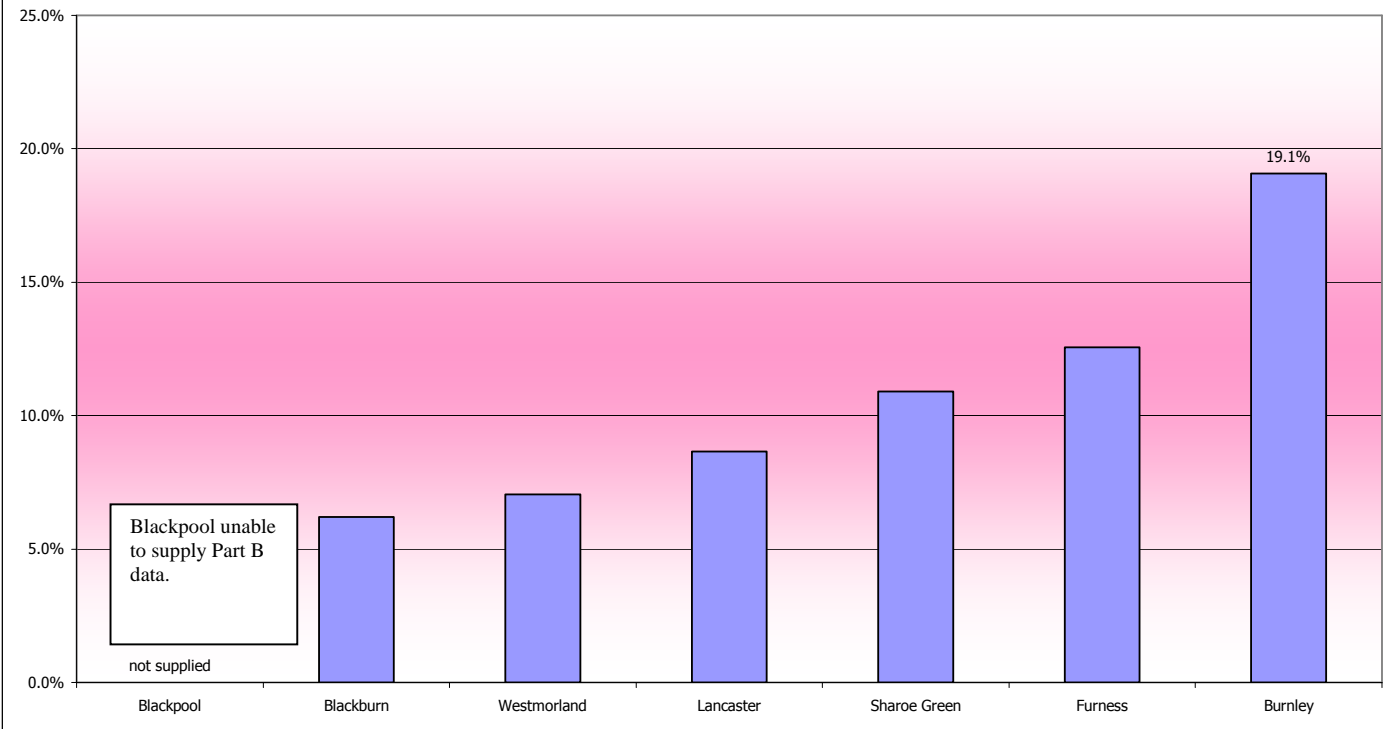
11.3%

** GP based practices

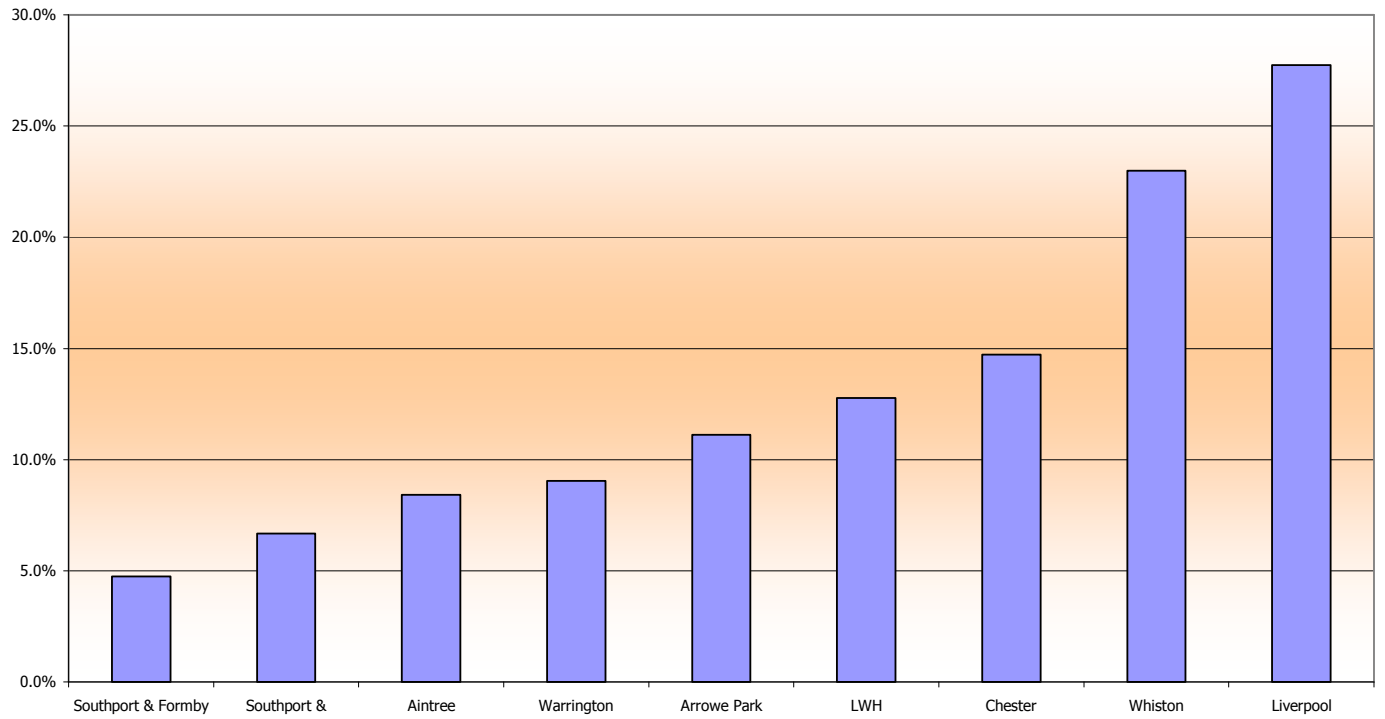
KC65 Part B - DNA % Apr 07 - Mar 08 (standard < 15%)
Greater Manchester & Cheshire Cancer Network



KC65 Part B - DNA % Apr 07 - Mar 08 (standard < 15%)
Lancashire & South Cumbria Cancer Network



KC65 Part B - DNA % Apr 07 - Mar 08 (standard < 15%)
Merseyside & Cheshire Cancer Network



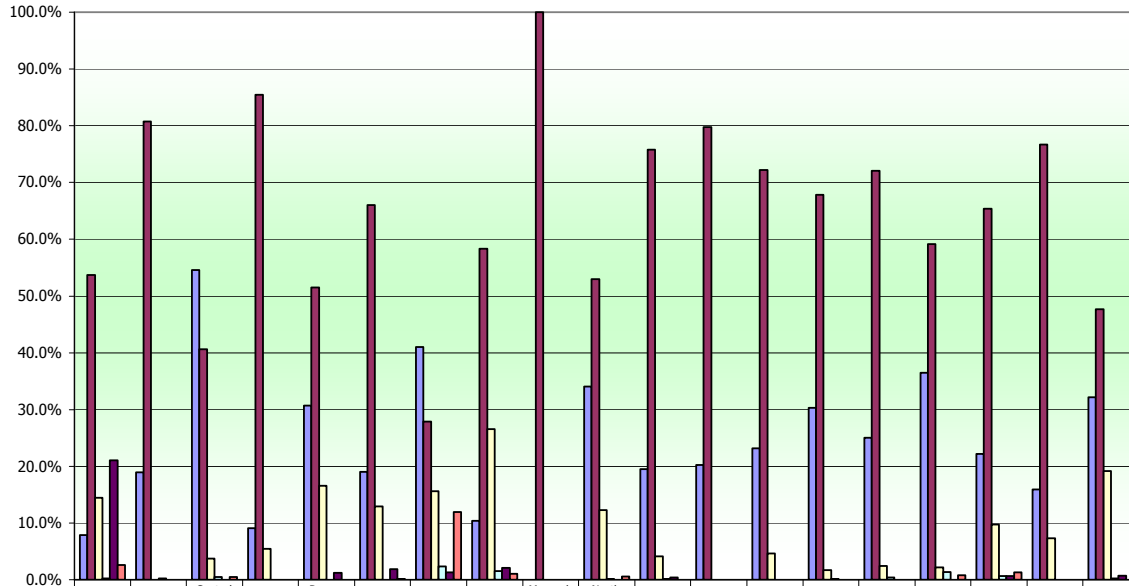
KC65 Part C1 First Attendance – type of procedure

Colposcopy unit by Cancer Network		No Treatment	Diag	Excision	Ablation No biopsy	Ablation With biopsy	Other
Lancs & S Cumbria	Blackburn	40.6%	58.2%	1.3%	0.0%	0.0%	0.0%
	Blackpool	37.3%	29.1%	31.1%	1.8%	0.2%	0.6%
	Burnley	58.7%	32.4%	4.9%	3.5%	0.3%	0.2%
	Furness	23.6%	75.0%	1.0%	0.0%	0.0%	0.5%
	Lancaster	32.2%	66.8%	1.0%	0.0%	0.0%	0.0%
	Sharoe Green	23.3%	55.2%	20.6%	0.3%	0.3%	0.3%
	Westmorland	35.6%	64.4%	0.0%	0.0%	0.0%	0.0%
Manchester & Cheshire	Bolton	7.9%	53.7%	14.5%	0.3%	21.1%	2.6%
	Bury	18.9%	80.8%	0.0%	0.3%	0.0%	0.0%
	Central Manchester	54.6%	40.7%	3.8%	0.5%	0.0%	0.5%
	Cumberland House	9.1%	85.5%	5.5%	0.0%	0.0%	0.0%
	Dawes Family Practice**	30.7%	51.5%	16.6%	0.0%	1.2%	0.0%
	Hope Hospital	19.0%	66.0%	12.9%	0.0%	1.9%	0.2%
	Leighton	41.0%	27.8%	15.6%	2.4%	1.3%	11.9%
	Macclesfield	10.4%	58.3%	26.6%	1.6%	2.1%	1.0%
	Monarch Medical Centre**	0.0%	100.0%	0.0%	0.0%	0.0%	0.0%
	North Manchester	34.1%	53.0%	12.3%	0.2%	0.0%	0.5%
	Oldham	19.5%	75.8%	4.2%	0.2%	0.4%	0.0%
	Palatine Centre**	20.3%	79.7%	0.0%	0.0%	0.0%	0.0%
	Rochdale	23.1%	72.2%	4.6%	0.0%	0.0%	0.0%
	Stepping Hill	30.3%	67.9%	1.7%	0.1%	0.0%	0.0%
	Tameside	25.0%	72.1%	2.5%	0.4%	0.0%	0.0%
	Trafford	36.4%	59.2%	2.2%	1.4%	0.0%	0.8%
	Wigan	22.2%	65.4%	9.7%	0.7%	0.7%	1.3%
Withington	15.9%	76.7%	7.3%	0.0%	0.0%	0.0%	
Wythenshawe	32.2%	47.7%	19.2%	0.2%	0.7%	0.0%	
Merseyside & Cheshire	Aintree	64.1%	18.0%	14.4%	1.6%	0.0%	1.8%
	Arrowe Park	59.4%	24.7%	13.0%	0.4%	1.2%	1.3%
	Chester	27.9%	53.8%	18.3%	0.0%	0.0%	0.0%
	Liverpool	15.0%	51.9%	21.3%	0.0%	0.0%	11.9%
	LWH	62.9%	20.0%	11.1%	0.9%	0.2%	5.0%
	Southport & Formby	27.6%	72.4%	0.0%	0.0%	0.0%	0.0%
	Southport & Ormskirk	15.7%	83.2%	0.3%	0.6%	0.3%	0.0%
	Warrington	56.8%	38.5%	4.2%	0.2%	0.0%	0.2%
	Whiston	28.3%	60.5%	6.2%	0.3%	0.0%	4.7%
Northern	Cumberland Infirmary	18.1%	54.3%	27.2%	0.0%	0.0%	0.4%

KC65 Part C2 All Attendance – type of procedure

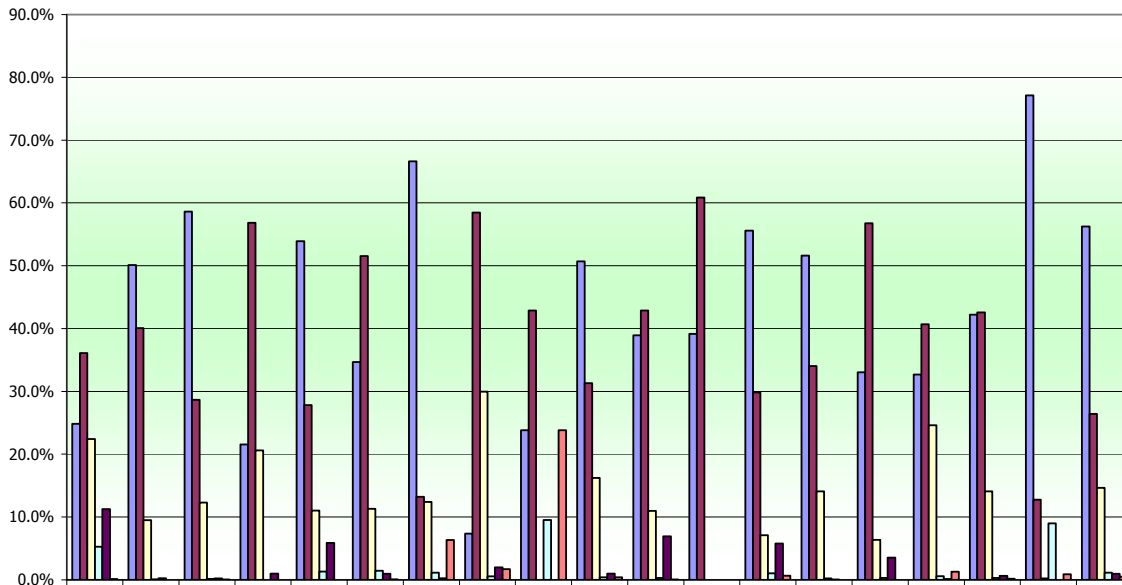
Colposcopy unit by Cancer Network		No Treatment	Diag	Excision	Ablation No biopsy	Ablation With biopsy	Other
Lancs & S Cumbria	Blackburn	54.7%	31.7%	13.6%	0.0%	0.0%	0.0%
	Blackpool	74.6%	11.3%	12.7%	1.1%	0.1%	0.3%
	Burnley	66.3%	18.8%	5.5%	2.9%	6.3%	0.1%
	Furness	46.8%	40.1%	9.7%	0.0%	3.2%	0.2%
	Lancaster	47.4%	39.2%	13.3%	0.0%	0.0%	0.2%
	Sharoe Green	46.9%	30.7%	14.3%	0.5%	7.4%	0.2%
	Westmorland	64.1%	23.2%	12.4%	0.0%	0.0%	0.2%
Manchester & Cheshire	Bolton	16.8%	45.2%	15.5%	2.8%	16.1%	3.5%
	Bury	49.5%	40.4%	9.3%	0.4%	0.5%	0.0%
	Central Manchester	68.1%	22.7%	8.1%	0.5%	0.4%	0.2%
	Cumberland House	18.9%	56.8%	23.2%	1.1%	0.0%	0.0%
	Dawes Family Practice**	54.8%	23.9%	16.4%	0.6%	4.3%	0.0%
	Hope Hospital	41.1%	46.9%	9.3%	1.4%	1.3%	0.0%
	Leighton	66.5%	12.7%	11.2%	1.1%	0.0%	8.5%
	Macclesfield	9.2%	54.8%	32.0%	1.3%	1.8%	0.9%
	Monarch Medical Centre**	33.3%	42.9%	0.0%	0.0%	0.0%	23.8%
	North Manchester	50.7%	29.3%	18.8%	0.3%	0.6%	0.3%
	Oldham	47.9%	36.7%	8.4%	0.3%	6.7%	0.1%
	Palatine Centre**	40.9%	59.1%	0.0%	0.0%	0.0%	0.0%
	Rochdale	57.6%	33.2%	4.6%	0.7%	3.9%	0.0%
	Stepping Hill	54.5%	31.6%	13.7%	0.1%	0.1%	0.0%
	Tameside	27.3%	50.8%	15.0%	0.5%	6.3%	0.0%
	Trafford	43.2%	33.8%	19.8%	0.8%	1.8%	0.5%
	Wigan	39.8%	39.8%	17.0%	0.7%	2.2%	0.6%
Withington	47.0%	45.6%	7.2%	0.0%	0.0%	0.2%	
Wythenshawe	62.5%	21.9%	14.0%	0.7%	0.3%	0.8%	
Merseyside & Cheshire	Aintree	72.1%	12.1%	10.9%	1.2%	2.8%	0.9%
	Arrowe Park	71.8%	14.2%	10.7%	0.8%	1.6%	0.8%
	Chester	53.7%	27.5%	17.8%	1.0%	0.1%	0.0%
	Liverpool	22.4%	36.3%	20.7%	0.0%	0.0%	20.7%
	LWH	73.5%	11.8%	8.4%	1.5%	2.5%	2.2%
	Southport & Formby	54.6%	32.0%	8.7%	1.3%	3.4%	0.0%
	Southport & Ormskirk	49.9%	34.5%	8.7%	1.0%	5.9%	0.0%
	Warrington	65.7%	25.7%	8.0%	0.4%	0.0%	0.1%
	Whiston	62.5%	27.1%	5.3%	0.8%	2.2%	2.1%
Northern	Cumberland Infirmary	46.0%	35.8%	17.8%	0.0%	0.0%	0.4%

KC65 Part C1 - First attendance - Type of procedure (%) 2007-2008
Greater Manchester & Cheshire Cancer Network



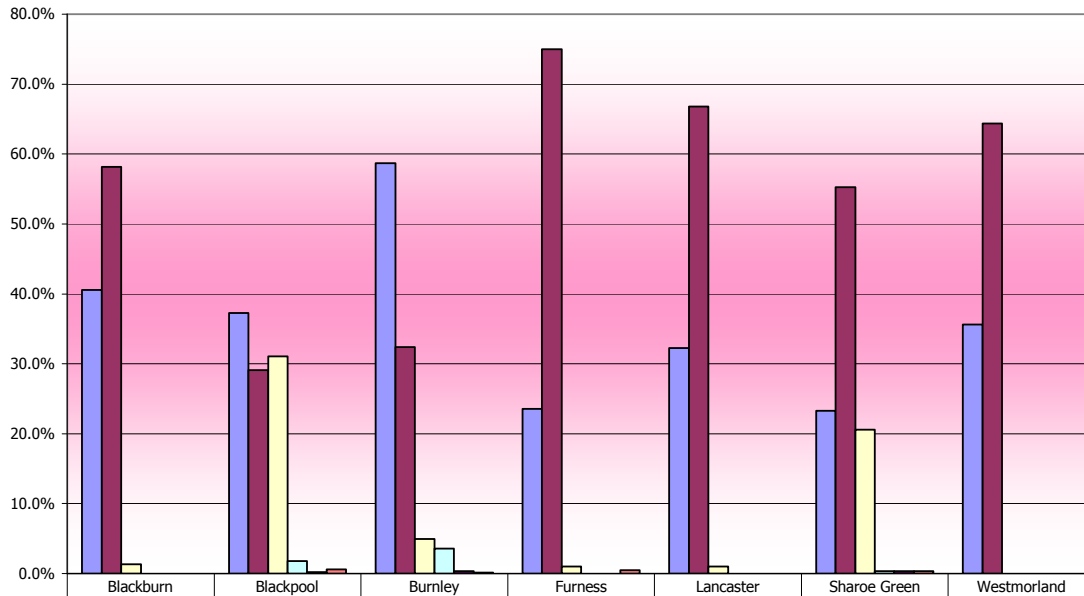
	Bolton	Bury	Central Manchester	Cumberland House	Dawes Family Practice*	Hope Hospital	Leighton	Macclesfield	Monarch Medical Centre**	North Manchester	Oldham	Palatine Centre**	Rochdale	Stepping Hill	Tameside	Trafford	Wigan	Withington	Wythenshawe
No Treatment	7.9%	18.9%	54.6%	9.1%	30.7%	19.0%	41.0%	10.4%	0.0%	34.1%	19.5%	20.3%	23.1%	30.3%	25.0%	36.4%	22.2%	15.9%	32.2%
Diag	53.7%	80.8%	40.7%	85.5%	51.5%	66.0%	27.8%	58.3%	100.0%	53.0%	75.8%	79.7%	72.2%	67.9%	72.1%	59.2%	65.4%	76.7%	47.7%
Excision	14.5%	0.0%	3.8%	5.5%	16.6%	12.9%	15.6%	26.6%	0.0%	12.3%	4.2%	0.0%	4.6%	1.7%	2.5%	2.2%	9.7%	7.3%	19.2%
Ablation No biopsy	0.3%	0.3%	0.5%	0.0%	0.0%	0.0%	2.4%	1.6%	0.0%	0.2%	0.2%	0.0%	0.0%	0.1%	0.4%	1.4%	0.7%	0.0%	0.2%
Ablation With biopsy	21.1%	0.0%	0.0%	0.0%	1.2%	1.9%	1.3%	2.1%	0.0%	0.0%	0.4%	0.0%	0.0%	0.0%	0.0%	0.0%	0.7%	0.0%	0.7%
Other	2.6%	0.0%	0.5%	0.0%	0.0%	0.2%	11.9%	1.0%	0.0%	0.5%	0.0%	0.0%	0.0%	0.0%	0.0%	0.8%	1.3%	0.0%	0.0%

KC65 Part C2 - All attendance - Type of procedure (%) 2006-2007
Greater Manchester & Cheshire Cancer Network



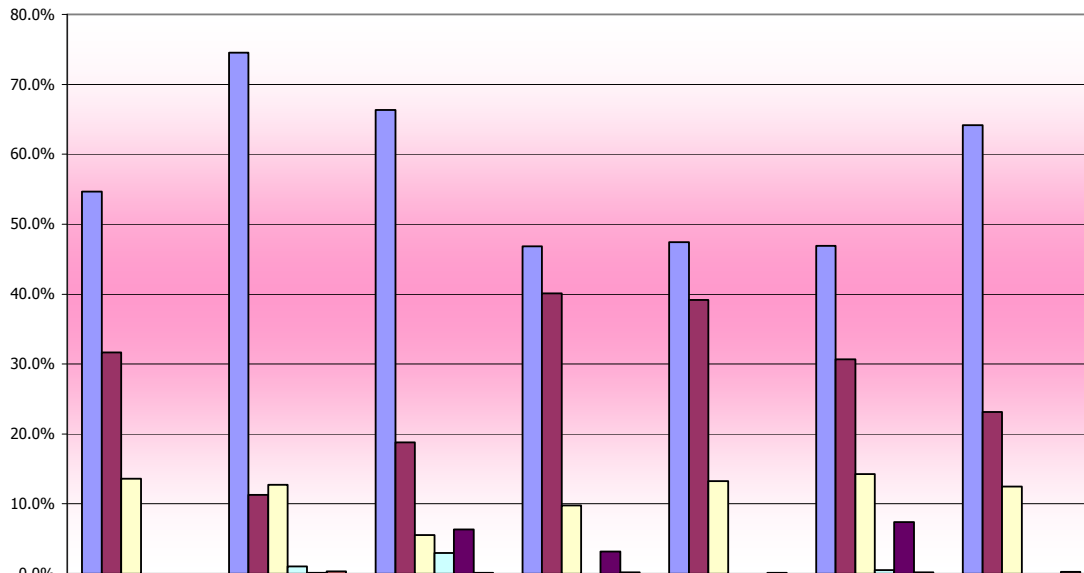
	Bolton	Bury	Central Manchester	Cumberland House	Dawes Family Practice**	Hope Hospital	Leighton	Macclesfield	Monarch Medical Centre**	North Manchester	Oldham	Palatine Centre**	Rochdale	Stepping Hill	Tameside	Trafford	Wigan	Withington	Wythenshawe
No Treatment	24.8%	50.1%	58.6%	21.6%	53.9%	34.7%	66.7%	7.3%	23.8%	50.7%	38.9%	39.2%	55.6%	51.6%	33.1%	32.7%	42.2%	77.1%	56.3%
Diag	36.1%	40.1%	28.7%	56.9%	27.8%	51.6%	13.2%	58.5%	42.9%	31.3%	42.9%	60.8%	29.8%	34.0%	56.8%	40.7%	42.6%	12.8%	26.4%
Excision	22.4%	9.5%	12.3%	20.6%	11.0%	11.3%	12.4%	29.9%	0.0%	16.2%	11.0%	0.0%	7.1%	14.1%	6.4%	24.6%	14.1%	0.2%	14.7%
Ablation No biopsy	5.3%	0.1%	0.2%	0.0%	1.3%	1.4%	1.2%	0.6%	9.5%	0.4%	0.3%	0.0%	1.0%	0.2%	0.3%	0.6%	0.3%	9.0%	1.1%
Ablation With biopsy	11.3%	0.2%	0.2%	1.0%	5.9%	1.0%	0.2%	2.0%	0.0%	1.0%	6.9%	0.0%	5.8%	0.1%	3.5%	0.1%	0.6%	0.0%	1.0%
Other	0.1%	0.0%	0.0%	0.0%	0.0%	0.1%	6.3%	1.7%	23.8%	0.4%	0.0%	0.0%	0.7%	0.0%	0.0%	1.3%	0.2%	0.9%	0.5%

KC65 Part C1 - First attendance - Type of procedure (%) 2007-2008
Lancashire & South Cumbria Cancer Network



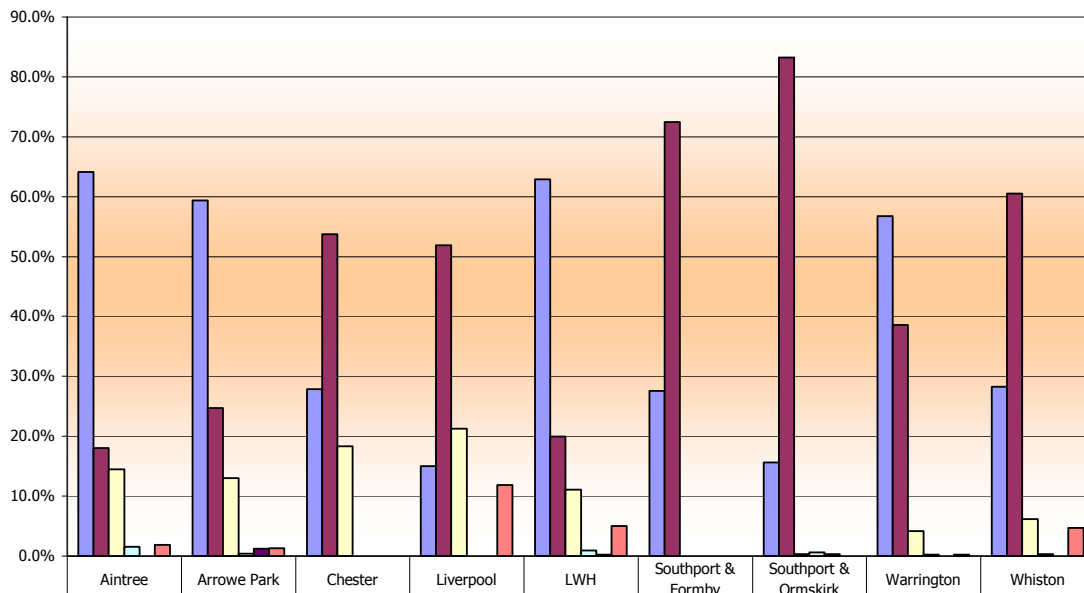
	Blackburn	Blackpool	Burnley	Furness	Lancaster	Sharoe Green	Westmorland
No Treatment	40.6%	37.3%	58.7%	23.6%	32.2%	23.3%	35.6%
Diag	58.2%	29.1%	32.4%	75.0%	66.8%	55.2%	64.4%
Excision	1.3%	31.1%	4.9%	1.0%	1.0%	20.6%	0.0%
Ablation No biopsy	0.0%	1.8%	3.5%	0.0%	0.0%	0.3%	0.0%
Ablation With biopsy	0.0%	0.2%	0.3%	0.0%	0.0%	0.3%	0.0%
Other	0.0%	0.6%	0.2%	0.5%	0.0%	0.3%	0.0%

KC65 Part C2 - All attendance - Type of procedure (%) 2007-2008
Lancashire & South Cumbria Cancer Network



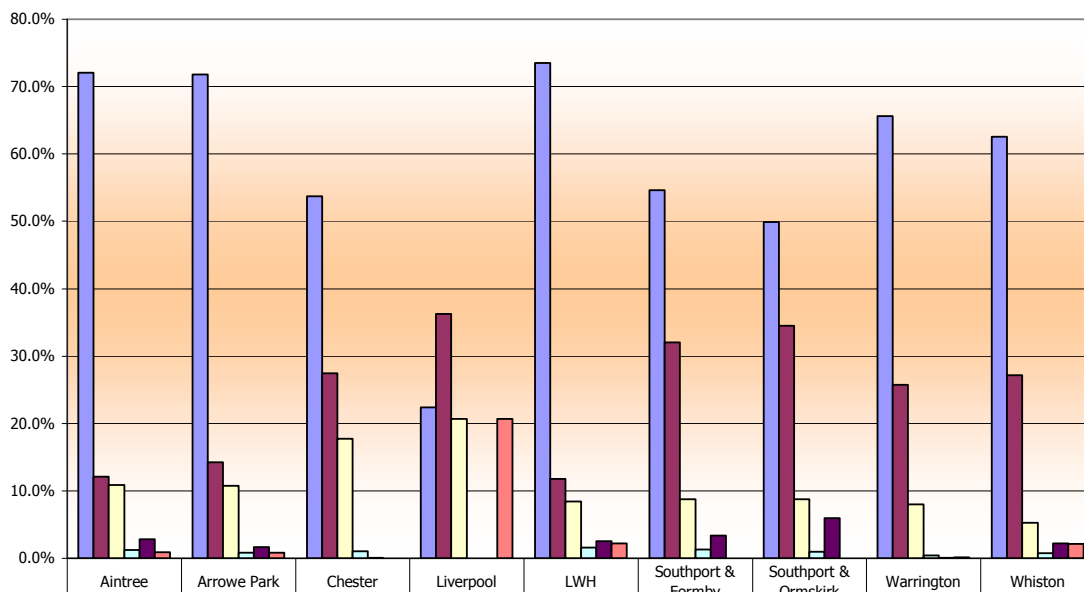
	Blackburn	Blackpool	Burnley	Furness	Lancaster	Sharoe Green	Westmorland
No Treatment	54.7%	74.6%	66.3%	46.8%	47.4%	46.9%	64.1%
Diag	31.7%	11.3%	18.8%	40.1%	39.2%	30.7%	23.2%
Excision	13.6%	12.7%	5.5%	9.7%	13.3%	14.3%	12.4%
Ablation No biopsy	0.0%	1.1%	2.9%	0.0%	0.0%	0.5%	0.0%
Ablation With biopsy	0.0%	0.1%	6.3%	3.2%	0.0%	7.4%	0.0%
Other	0.0%	0.3%	0.1%	0.2%	0.2%	0.2%	0.2%

KC65 Part C1 - First attendance - Type of procedure (%) 2007-2008
Merseyside & Cheshire Cancer Network



	Aintree	Arrowe Park	Chester	Liverpool	LWH	Southport & Formby	Southport & Ormskirk	Warrington	Whiston
No Treatment	64.1%	59.4%	27.9%	15.0%	62.9%	27.6%	15.7%	56.8%	28.3%
Diag	18.0%	24.7%	53.8%	51.9%	20.0%	72.4%	83.2%	38.5%	60.5%
Excision	14.4%	13.0%	18.3%	21.3%	11.1%	0.0%	0.3%	4.2%	6.2%
Ablation No biopsy	1.6%	0.4%	0.0%	0.0%	0.9%	0.0%	0.6%	0.2%	0.3%
Ablation With biopsy	0.0%	1.2%	0.0%	0.0%	0.2%	0.0%	0.3%	0.0%	0.0%
Other	1.8%	1.3%	0.0%	11.9%	5.0%	0.0%	0.0%	0.2%	4.7%

KC65 Part C2 - All attendance - Type of procedure (%) 2007-2008
Merseyside & Cheshire Cancer Network

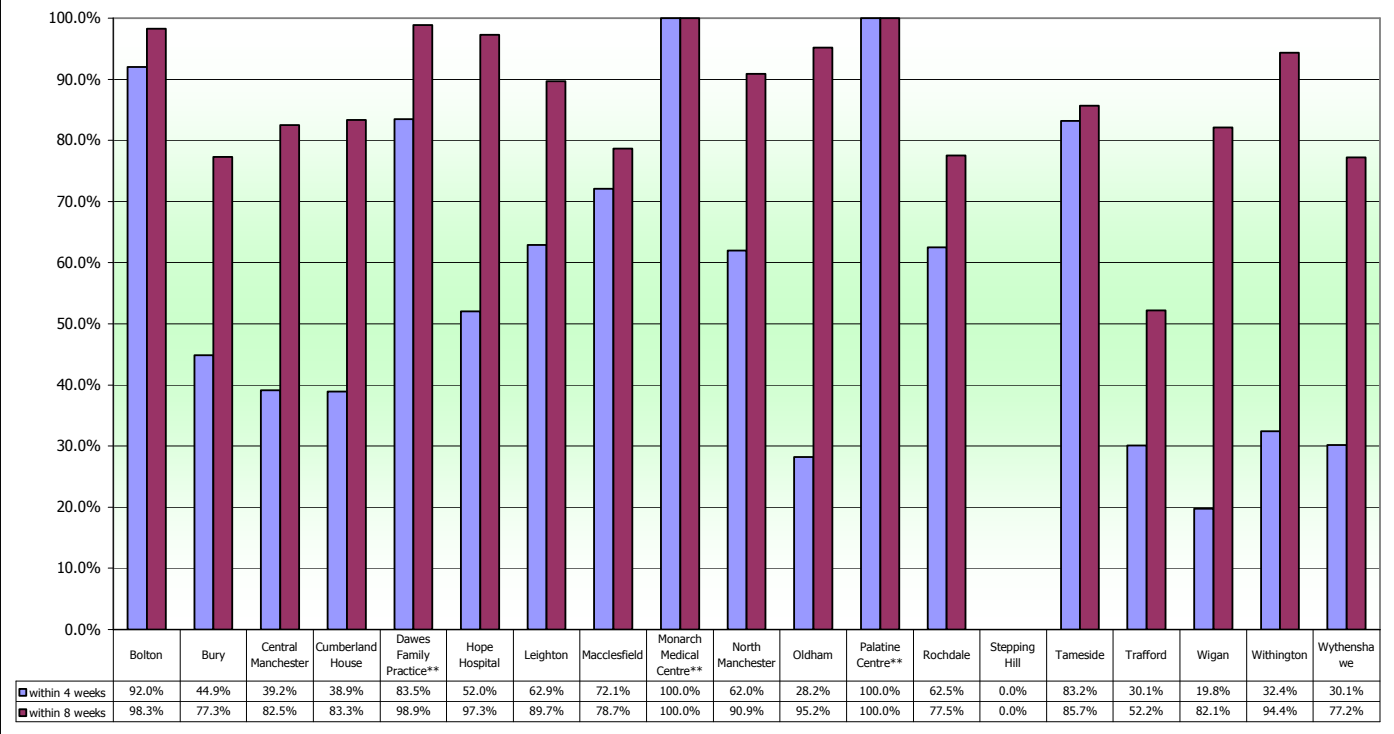


	Aintree	Arrowe Park	Chester	Liverpool	LWH	Southport & Formby	Southport & Ormskirk	Warrington	Whiston
No Treatment	72.1%	71.8%	53.7%	22.4%	73.5%	54.6%	49.9%	65.7%	62.5%
Diag	12.1%	14.2%	27.5%	36.3%	11.8%	32.0%	34.5%	25.7%	27.1%
Excision	10.9%	10.7%	17.8%	20.7%	8.4%	8.7%	8.7%	8.0%	5.3%
Ablation No biopsy	1.2%	0.8%	1.0%	0.0%	1.5%	1.3%	1.0%	0.4%	0.8%
Ablation With biopsy	2.8%	1.6%	0.1%	0.0%	2.5%	3.4%	5.9%	0.0%	2.2%
Other	0.9%	0.8%	0.0%	20.7%	2.2%	0.0%	0.0%	0.1%	2.1%

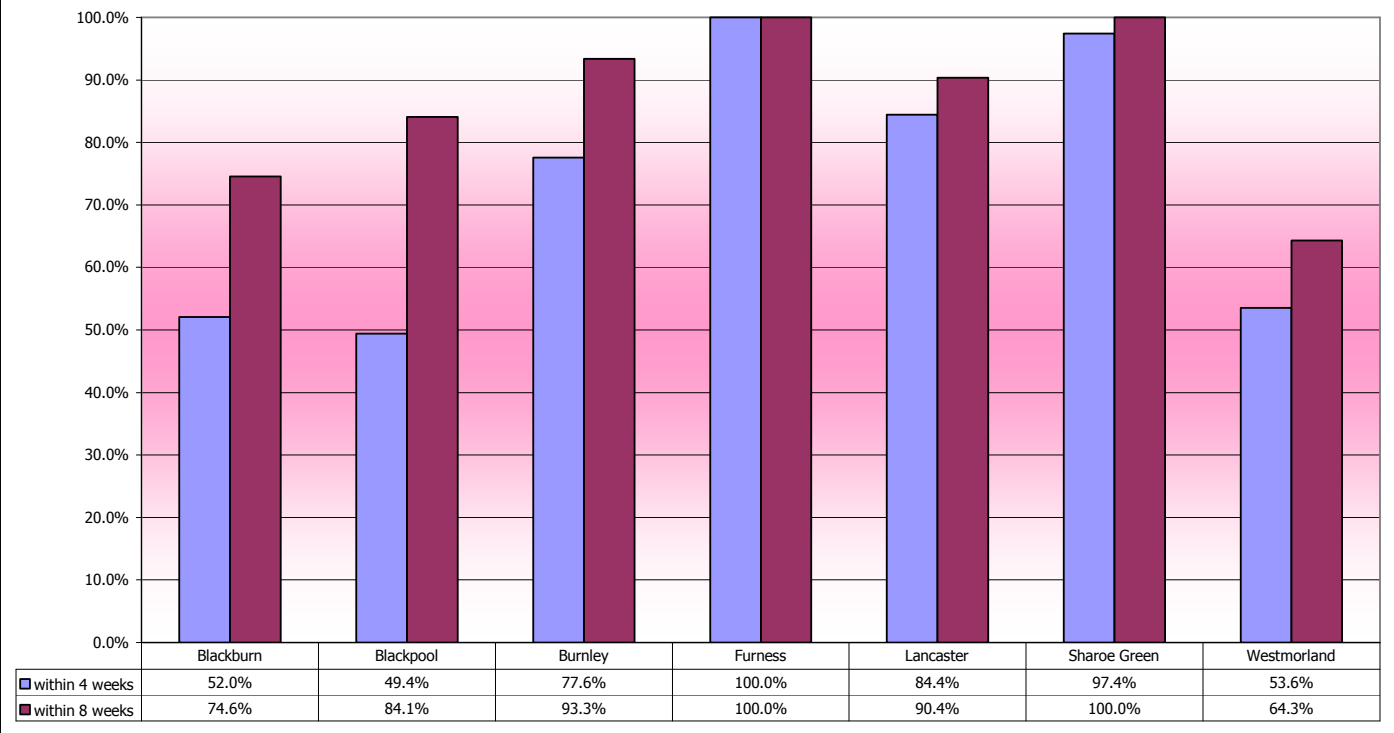
KC65 Part D Time from biopsy to informing patient (1st month of each quarter). Best practice 90% within 4 weeks. Standard 100% within 8 weeks.

Colposcopy unit by Cancer Network		within 4 weeks	within 8 weeks
Lancs & S Cumbria	Blackburn	52.0%	74.6%
	Blackpool	49.4%	84.1%
	Burnley	77.6%	93.3%
	Furness	100.0%	100.0%
	Lancaster	84.4%	90.4%
	Sharoe Green	97.4%	100.0%
	Westmorland	53.6%	64.3%
Manchester & Cheshire	Bolton	92.0%	98.3%
	Bury	44.9%	77.3%
	Central Manchester	39.2%	82.5%
	Cumberland House	38.9%	83.3%
	Dawes Family Practice**	83.5%	98.9%
	Hope Hospital	52.0%	97.3%
	Leighton	62.9%	89.7%
	Macclesfield	72.1%	78.7%
	Monarch Medical Centre**	100.0%	100.0%
	North Manchester	62.0%	90.9%
	Oldham	28.2%	95.2%
	Palatine Centre**	100.0%	100.0%
	Rochdale	62.5%	77.5%
	Stepping Hill	0.0%	0.0%
	Tameside	83.2%	85.7%
	Trafford	30.1%	52.2%
	Wigan	19.8%	82.1%
Withington	32.4%	94.4%	
Wythenshawe	30.1%	77.2%	
Merseyside & Cheshire	Aintree	100.0%	100.0%
	Arrowe Park	77.4%	91.2%
	Chester	97.8%	100.0%
	Liverpool	42.2%	74.4%
	LWH	57.5%	92.7%
	Southport & Formby	89.3%	99.2%
	Southport & Ormskirk	99.2%	99.2%
	Warrington	95.0%	96.3%
	Whiston	79.3%	93.0%
Northern	Cumberland Infirmary	50.0%	86.0%

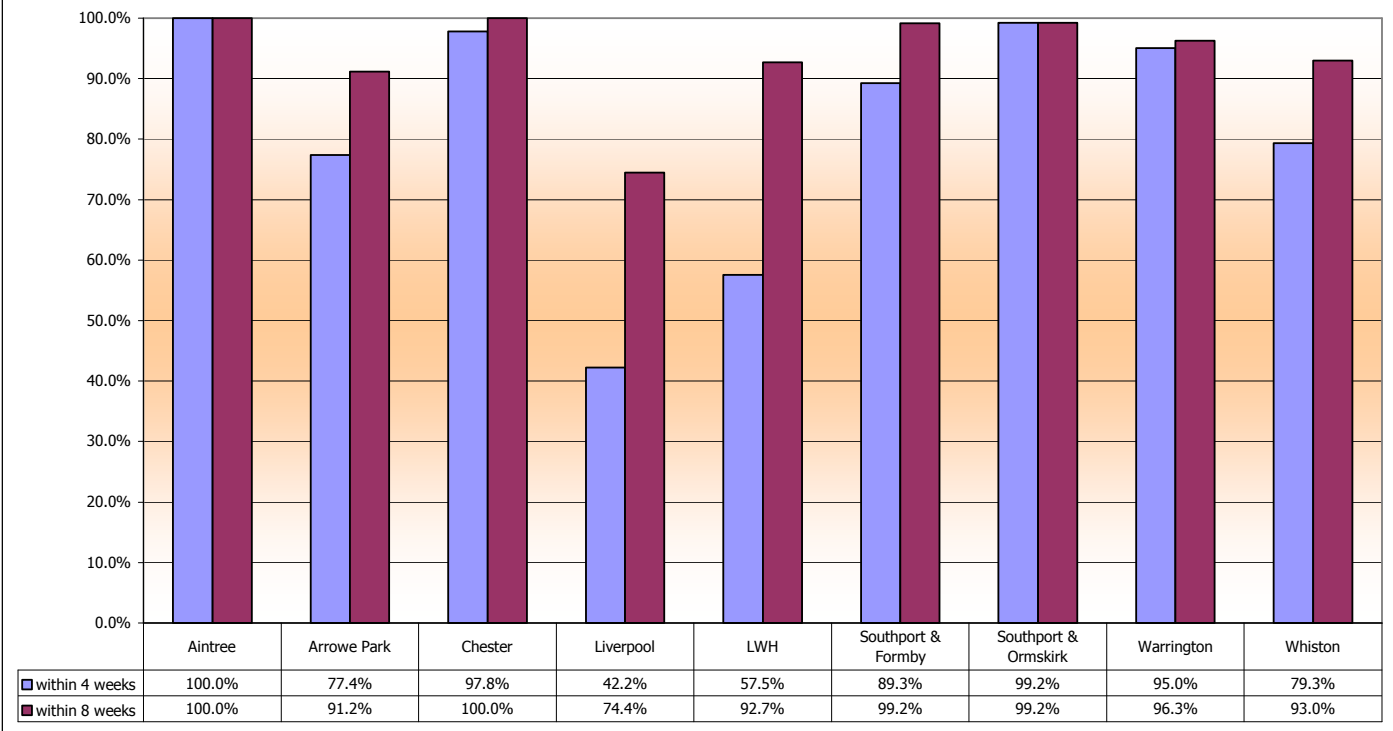
KC65 Part D - Time from biopsy to informing patient (1st month of each quarter) Best practice 90% within 4 weeks, Standard 100% within 8 weeks
Greater Manchester & Cheshire Cancer Network



KC65 Part D - Time from biopsy to informing patient (1st month of each quarter) Best practice 90% within 4 weeks, Standard 100% within 8 weeks
Lancashire & South Cumbria Cancer Network



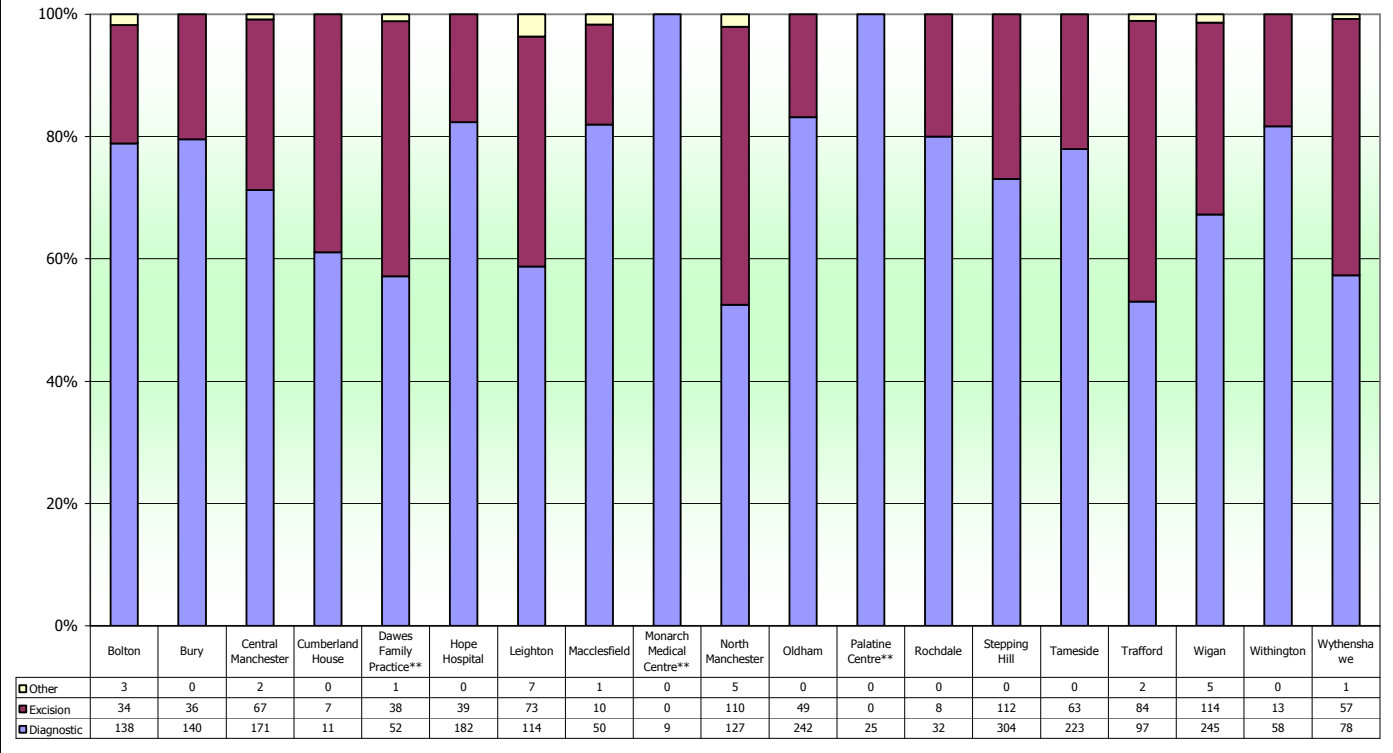
KC65 Part D - Time from biopsy to informing patient (1st month of each quarter) Best practice 90% within 4 weeks, Standard 100% within 8 weeks
Merseyside & Cheshire Cancer Network



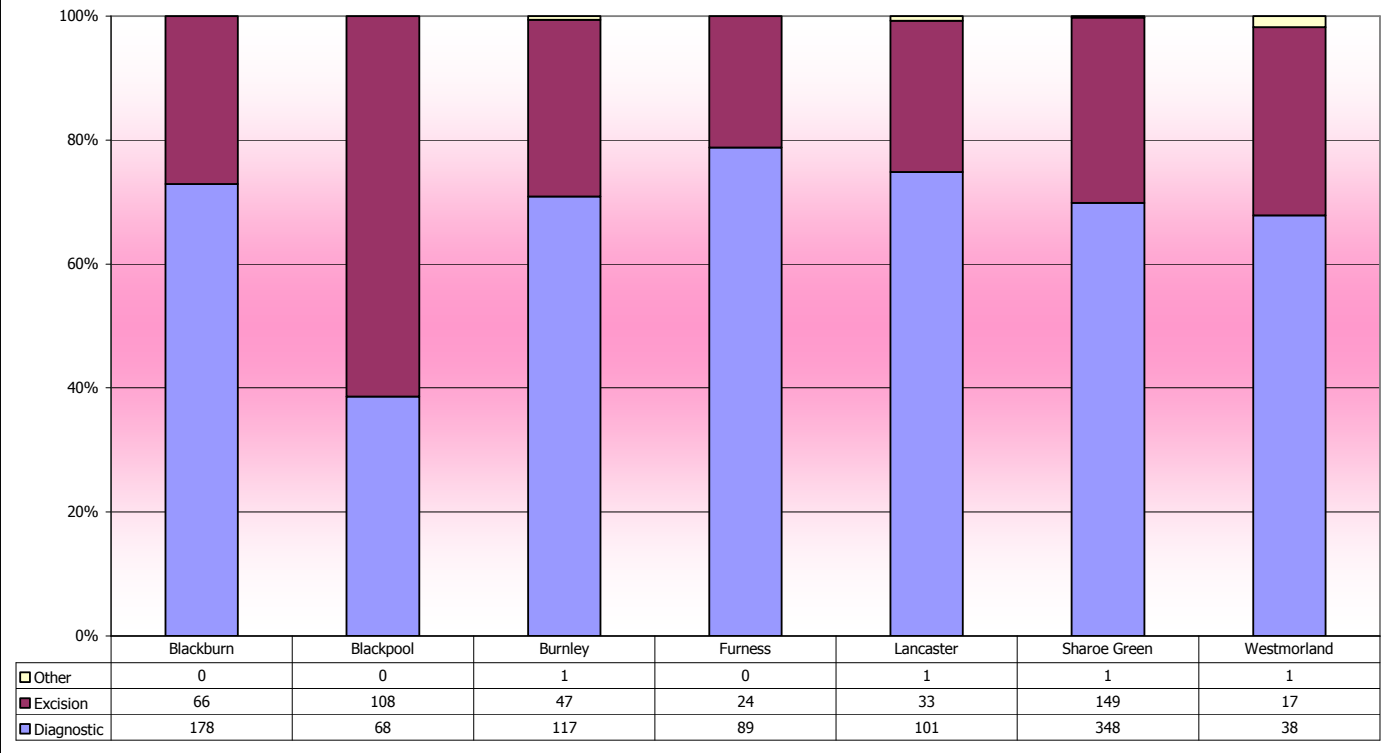
KC65 Part E All outcomes by biopsy time 1st month of each quarter

Colposcopy unit by Cancer Network		Diagnostic	Excision	Other
Lancs & S Cumbria	Blackburn	178	66	0
	Blackpool	68	108	0
	Burnley	117	47	1
	Furness	89	24	0
	Lancaster	101	33	1
	Sharoe Green	348	149	1
	Westmorland	38	17	1
Manchester & Cheshire	Bolton	138	34	3
	Bury	140	36	0
	Central Manchester	171	67	2
	Cumberland House	11	7	0
	Dawes Family Practice**	52	38	1
	Hope Hospital	182	39	0
	Leighton	114	73	7
	Macclesfield	50	10	1
	Monarch Medical Centre**	9	0	0
	North Manchester	127	110	5
	Oldham	242	49	0
	Palatine Centre**	25	0	0
	Rochdale	32	8	0
	Stepping Hill	304	112	0
	Tameside	223	63	0
	Trafford	97	84	2
	Wigan	245	114	5
Withington	58	13	0	
Wythenshawe	78	57	1	
Merseyside & Cheshire	Aintree	116	103	6
	Arrowe Park	94	60	5
	Chester	134	90	2
	Liverpool	75	15	0
	LWH	135	112	26
	Southport & Formby	92	28	1
	Southport & Ormskirk	98	30	0
	Warrington	235	86	1
	Whiston	249	56	24
Northern	Cumberland Infirmary	215	105	4

**KC65 Part E All outcomes by biopsy type 1st month of each quarter
Greater Manchester & Cheshire Cancer Network**



**KC65 Part E All outcomes by biopsy type 1st month of each quarter
Lancashire & South Cumbria Cancer Network**



KC65 Part E All outcomes by biopsy type 1st month of each quarter
Merseyside & Cheshire Cancer Network

