



INFORMATION SUMMARY

BY CANCER NETWORK

1 Apr 08 to 31 Mar 09

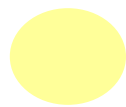
Produced by
North West Cervical Screening
Quality Assurance Reference Centre
Liverpool Women's Hospital
Crown Street Liverpool L8 7SS
www.nwcsqarc.org.uk



CANCER NETWORK KEY



Northern Cancer Network



Lancashire & South Cumbria Cancer Network



Greater Manchester & Cheshire Cancer Network



Merseyside & Cheshire Cancer Network

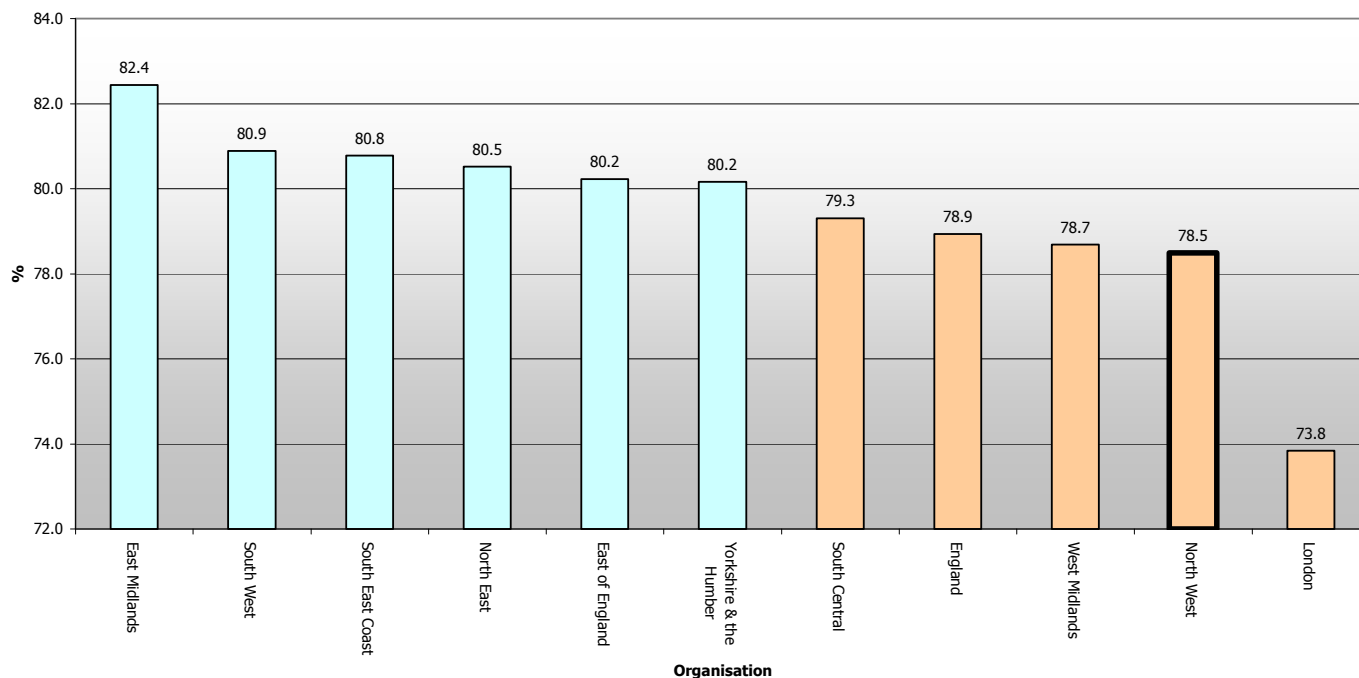
Cervical Screening Programme: coverage of the Target Age Group (25-64) by Primary Care Organisation, 2004-05 to 2008-09.

Cancer Network	KC53 Data for Target Screening Age 25-64 (ranked in order of coverage for 2008-2009)	Coverage 2008-2009	Coverage 2007-2008	Coverage 2006-2007	Coverage 2005-2006	Coverage 2004-2005
Greater Manchester & Cheshire	Central & Eastern Cheshire	82.2	82.3	83.2	83.6	
Greater Manchester & Cheshire	Stockport	81.8	81	81.3	81.5	81.8
Greater Manchester & Cheshire	Bury	81.0	81.3	82.0	82.4	82.9
Greater Manchester & Cheshire	Trafford	80.7	80.4	80.8	80.9	
Greater Manchester & Cheshire	Ashton, Leigh and Wigan	80.3	80	80.7	81.1	80.6
Greater Manchester & Cheshire	Tameside and Glossop	79.6	79.3	80.3	81.1	82.1
Greater Manchester & Cheshire	Bolton	79.6	79.4	80.6	81.1	81.2
Greater Manchester & Cheshire	Oldham	79.0	79.1	80.2	80.7	81.0
Greater Manchester & Cheshire	Heywood and Middleton & Rochdal	77.8	77.9	79.3	80.0	
Greater Manchester & Cheshire	Salford	77.2	77.2	77.9	78.3	78.8
Greater Manchester & Cheshire	Manchester	73.5	73.3	74.0	74.4	
Lancashire & South Cumbria	North Lancashire	79.1	78.5	79.2		
Lancashire & South Cumbria	East Lancashire	78.8	79	80.0		
Lancashire & South Cumbria	Central Lancashire	78.8	78.6	79.6		
Lancashire & South Cumbria	Blackburn With Darwen	75.3	76	77.3	77.9	80.2
Lancashire & South Cumbria	Blackpool	75.2	74.1	75.0	75.3	76.7
Merseyside & Cheshire	Warrington	82.2	82	82.9	82.8	82.9
Merseyside & Cheshire	Western Cheshire	81.4	80.9	81.6	81.8	
Merseyside & Cheshire	Halton & St Helens	78.9	78.8	79.4	79.5	
Merseyside & Cheshire	Wirral	77.8	77.2	77.9	78.3	
Merseyside & Cheshire	Knowsley	75.7	74	74.5	74.8	75.3
Merseyside & Cheshire	Sefton	74.6	73.9	74.4	74.6	
Merseyside & Cheshire	Liverpool	71.9	71.6	72.3	72.8	
Northern	Cumbria	81.9	81.7	82.0		

Source Cervical Screening Programme, England:2008-09: Table 13 © 2009, The Health and Social Care Information Centre

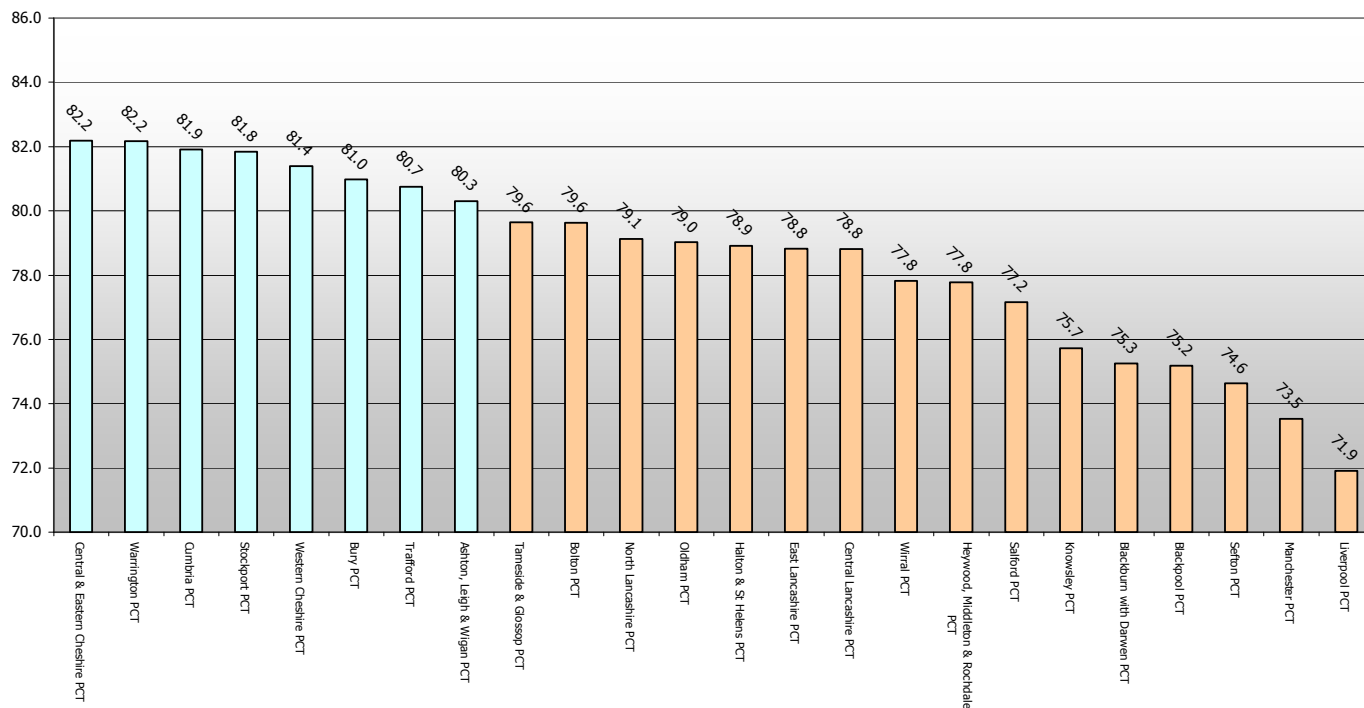
Cervical screening programme: coverage (less than 5 years since last adequate test) of the Target Age Group (25-64) by SHA 2008-09

sources: KC53 Parts A2 and A3; Cervical Screening Programme 2008-09 The Information Centre

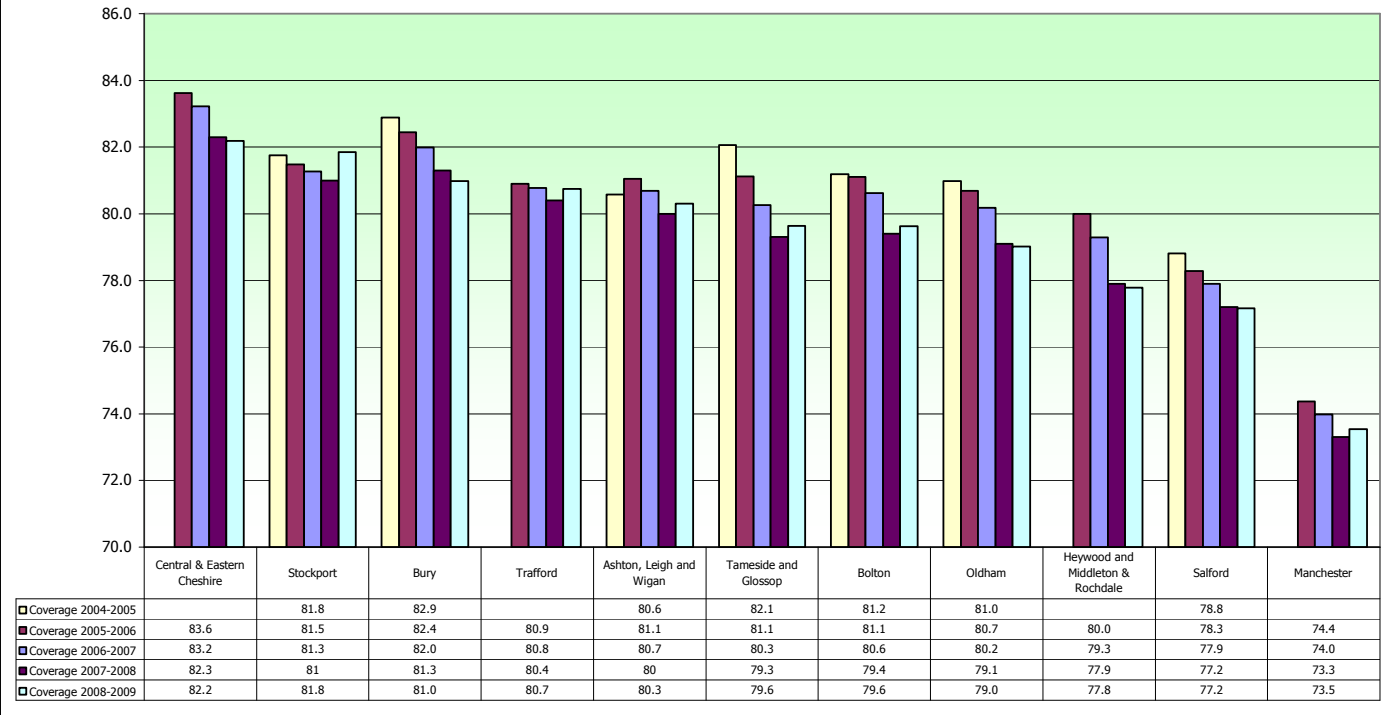


Cervical screening programme: coverage (less than 5 years since last adequate test) of the Target Age Group (25-64) by PCT 2008-09

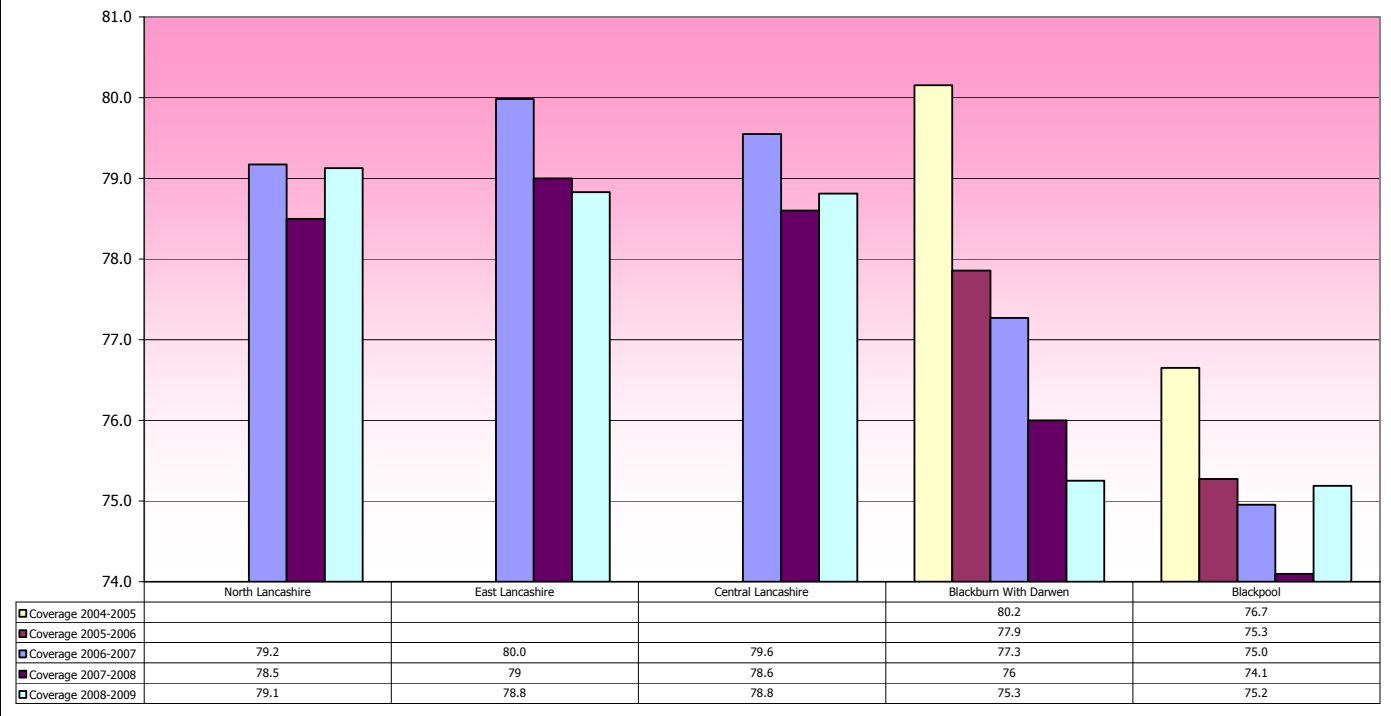
Sources: KC53 Parts A2 and A3; Cervical Screening Programme 2008-09 The Information Centre



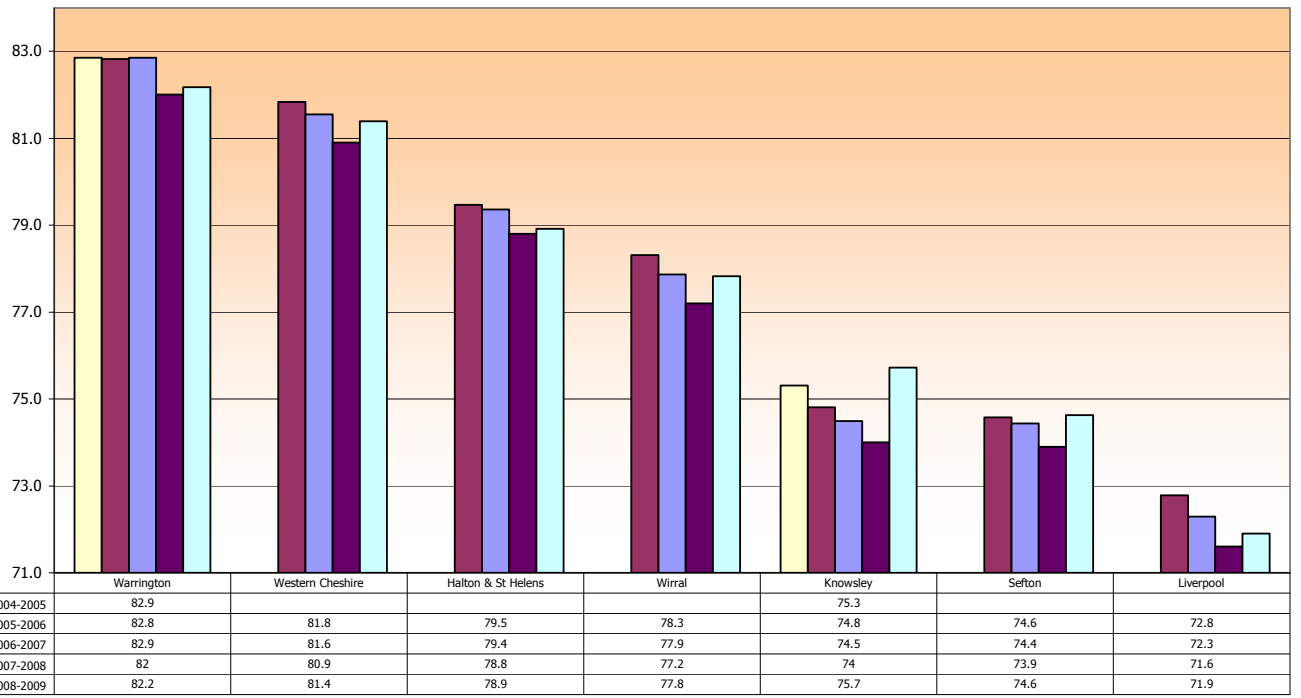
% Coverage (less than 5 years since adequate test) for the period 2004-2009 for target group 25-64 for Greater Manchester & Cheshire Cancer Network. Target 80%.



% Coverage (less than 5 years since adequate test) for the period 2004-2009 for target group 25-64 for Lancashire & South Cumbria Cancer Network. Target 80%.



% Coverage (less than 5 years since adequate test) for the period 2004-2009 for target group 25-64 for Merseyside & Cheshire Cancer Network. Target 80%.



Measuring laboratory performance in the North West

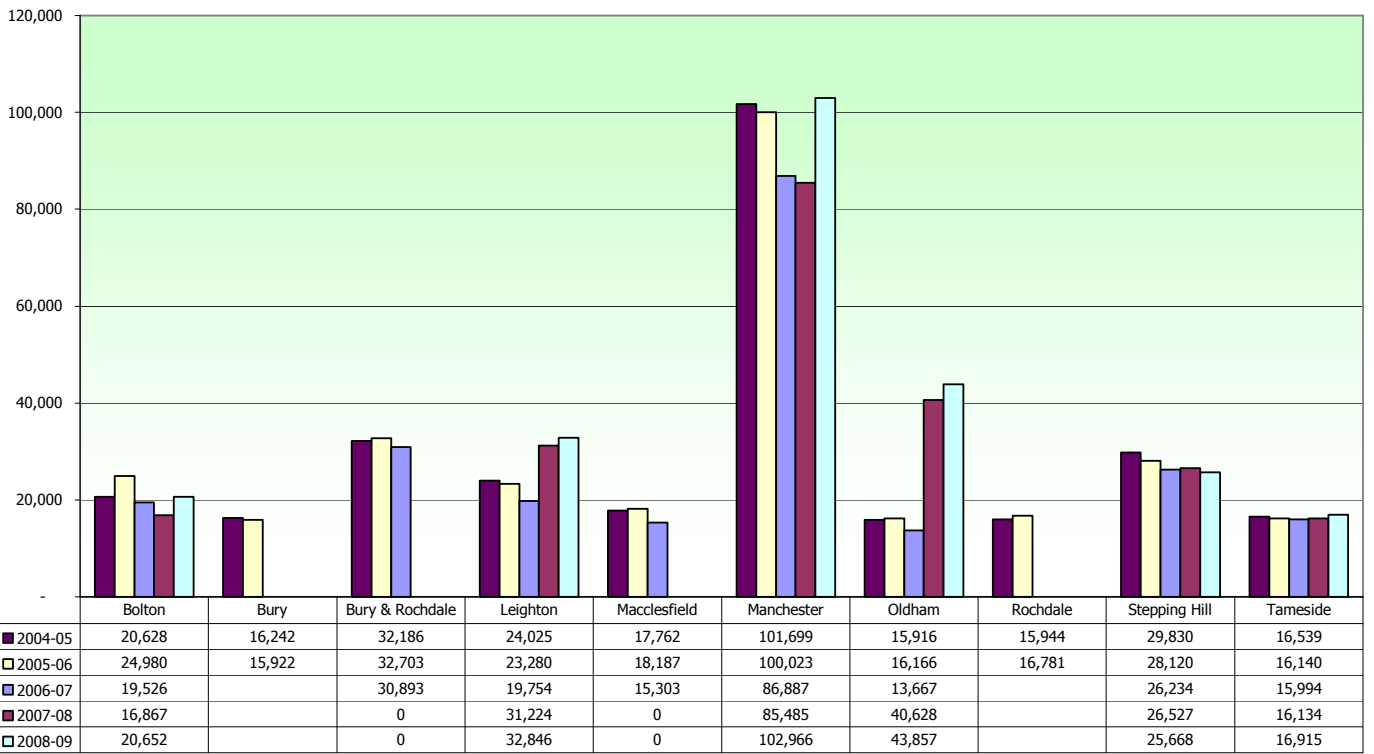
2004-05 to 2008-09

Workload

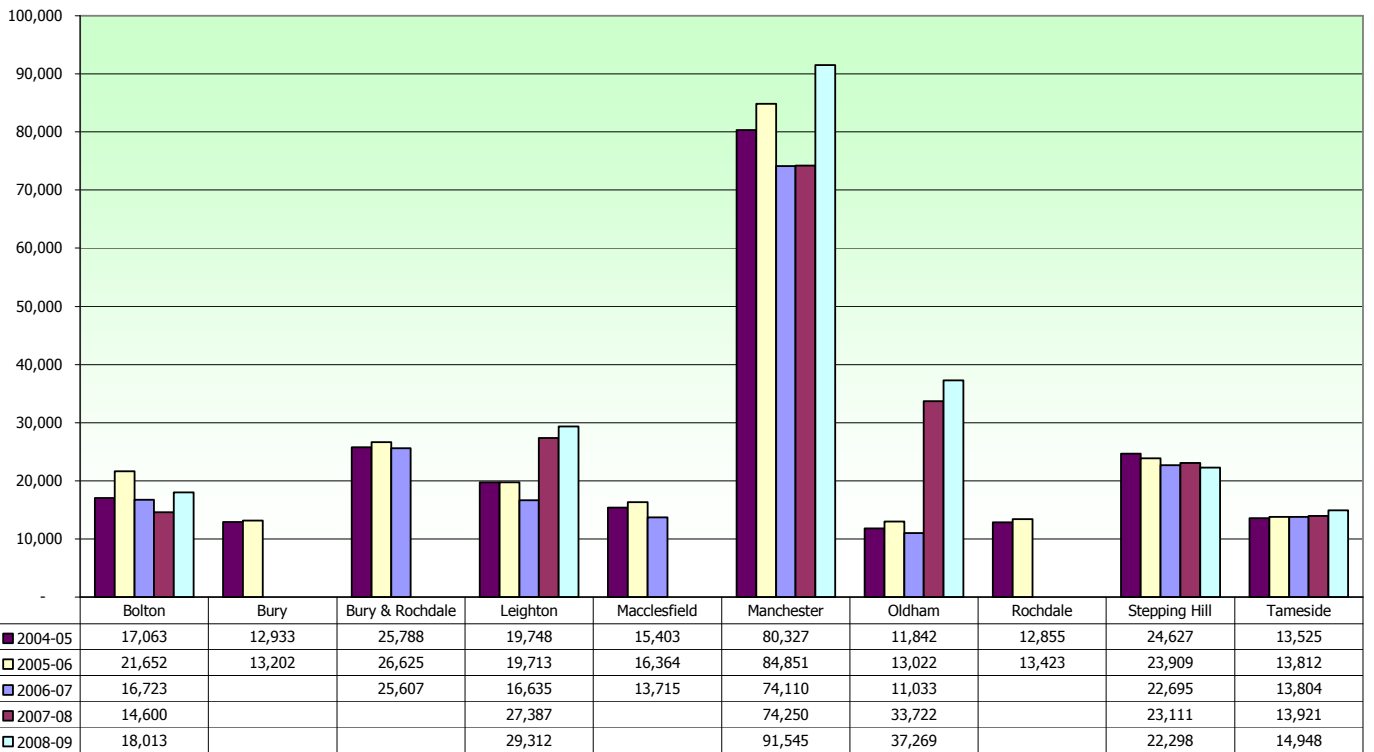
Laboratory by Cancer Network		Workload - Smears examined									
		2008-09		2007-08		2006-07		2005-06		2004-05	
		All sources, all ages	GP & NHS CC (25-64)	All sources, all ages	GP & NHS CC (25-64)	All sources, all ages	GP & NHS CC (25-64)	All sources, all ages	GP & NHS CC (25-64)	All sources, all ages	GP & NHS CC (25-64)
Lancs & S Cumbria	Blackpool	26,633	23,658	21,837	18,988	20,436	17,433	21,598	18,193	22,351	18,203
	Chorley	26,267	23,274	22,166	18,998	23,399	19,783	25,535	21,872	25,926	20,609
	East Lancashire	32,427	28,631	32,897	28,649	34,787	30,194	37,805	32,652	39,166	32,765
	Lancaster	23,089	20,908	18,206	16,303	17,944	15,829	22,012	19,231	22,079	18,141
	Blackburn							19,666	17,103	20,419	17,318
	Burnley							18,139	15,549	18,747	15,447
Manchester & Cheshire	Bolton	20,652	18,013	16,867	14,600	19,526	16,723	24,980	21,652	20,628	17,063
	Bury							15,922	13,202	16,242	12,933
	Bury & Rochdale					30,893	25,607	32,703	26,625	32,186	25,788
	Leighton	32,846	29,312	31,224	27,387	19,754	16,635	23,280	19,713	24,025	19,748
	Macclesfield					15,303	13,715	18,187	16,364	17,762	15,403
	Manchester	102,966	91,545	85,485	74,250	86,887	74,110	100,023	84,851	101,699	80,327
	Oldham	43,857	37,269	40,628	33,722	13,667	11,033	16,166	13,022	15,916	11,842
	Rochdale							16,781	13,423	15,944	12,855
	Stepping Hill	25,668	22,298	26,527	23,111	26,234	22,695	28,120	23,909	29,830	24,627
Tameside	16,915	14,948	16,134	13,921	15,994	13,804	16,140	13,812	16,539	13,525	
Merseyside & Cheshire	Aintree	20,440	17,944	18,903	16,662	19,193	16,965	19,450	17,142	21,745	18,729
	Arrowe Park	23,657	20,727	21,794	19,031	23,967	20,732	25,514	21,969	28,482	23,635
	Chester	20,881	18,402	18,411	15,815	20,455	17,582	22,687	19,802	23,962	20,296
	Liverpool	30,194	24,850	26,983	21,608	24,733	19,005	26,706	19,849	29,443	20,478
	Southport	15,750	13,822	14,420	12,615	15,264	13,406	15,538	13,452	17,720	14,568
	Warrington	25,510	22,390	21,784	18,936	24,883	21,186	31,143	26,597	26,215	21,371
	Whiston	19,665	16,804	17,506	14,609	18,727	15,485	22,251	17,912	22,827	17,895
Northern	Carlisle	23,693	21,331	23,462	21,018	25,440	22,785	25,238	22,237	25,800	22,378

Source Cervical Screening Programme, England:2008-09: Table 19 © 2009, The Health and Social Care Information Centre

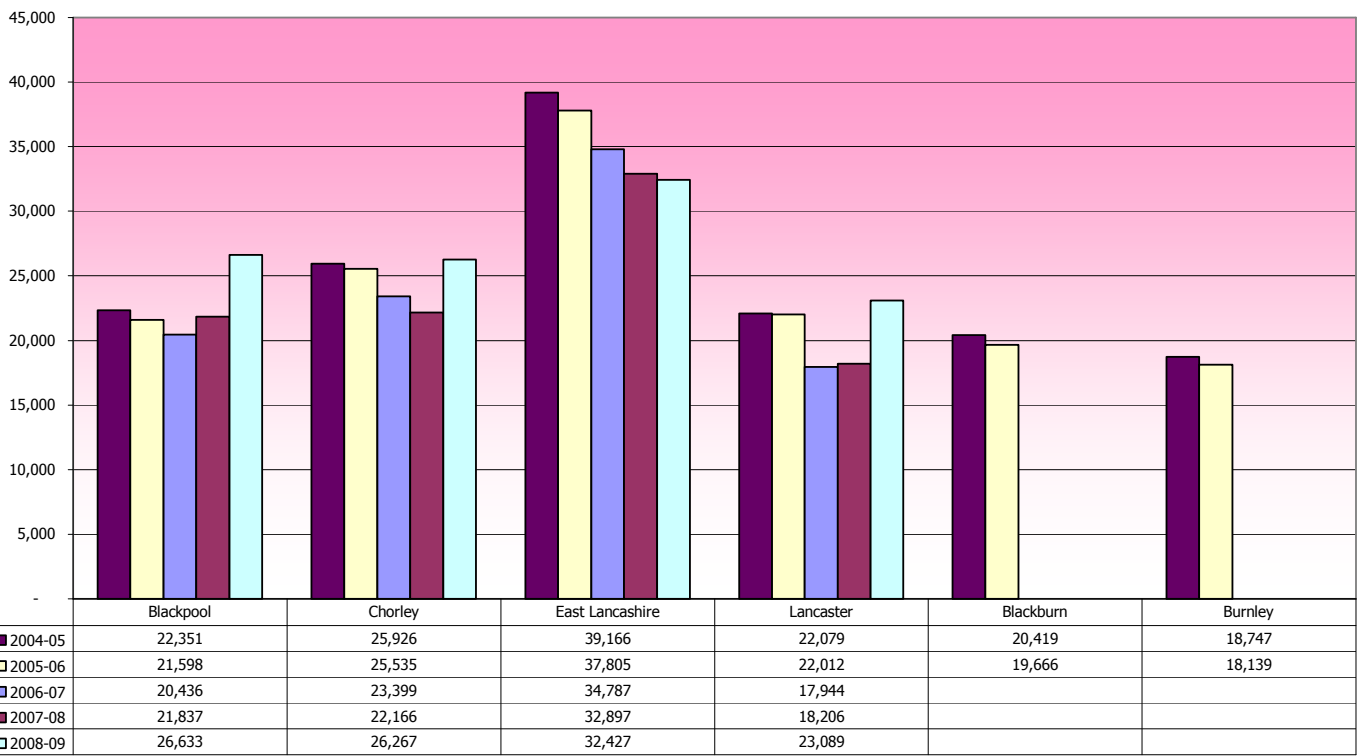
Workload (all sources, all ages) 2004-2009 for Greater Manchester & Cheshire Cancer Network.



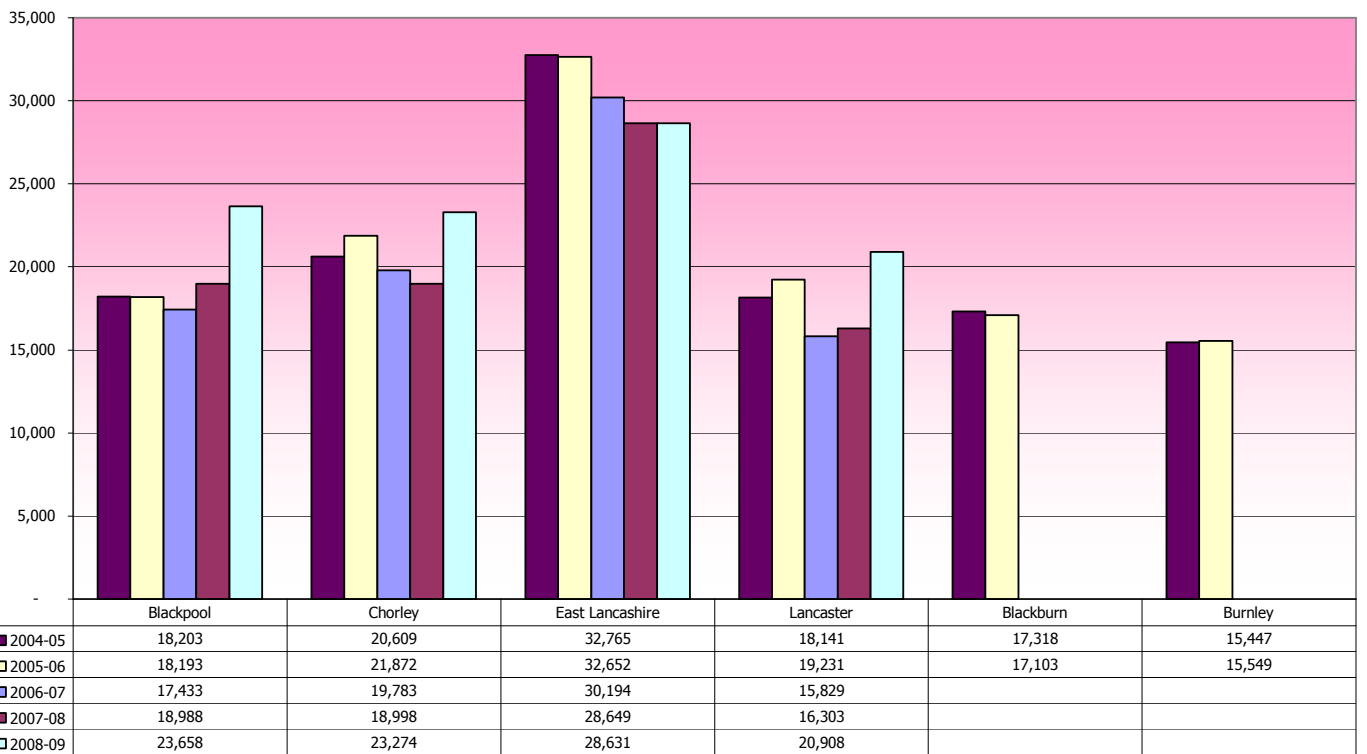
Workload (GP & NHSCC) 2004-2009 for Greater Manchester & Cheshire Cancer Network.



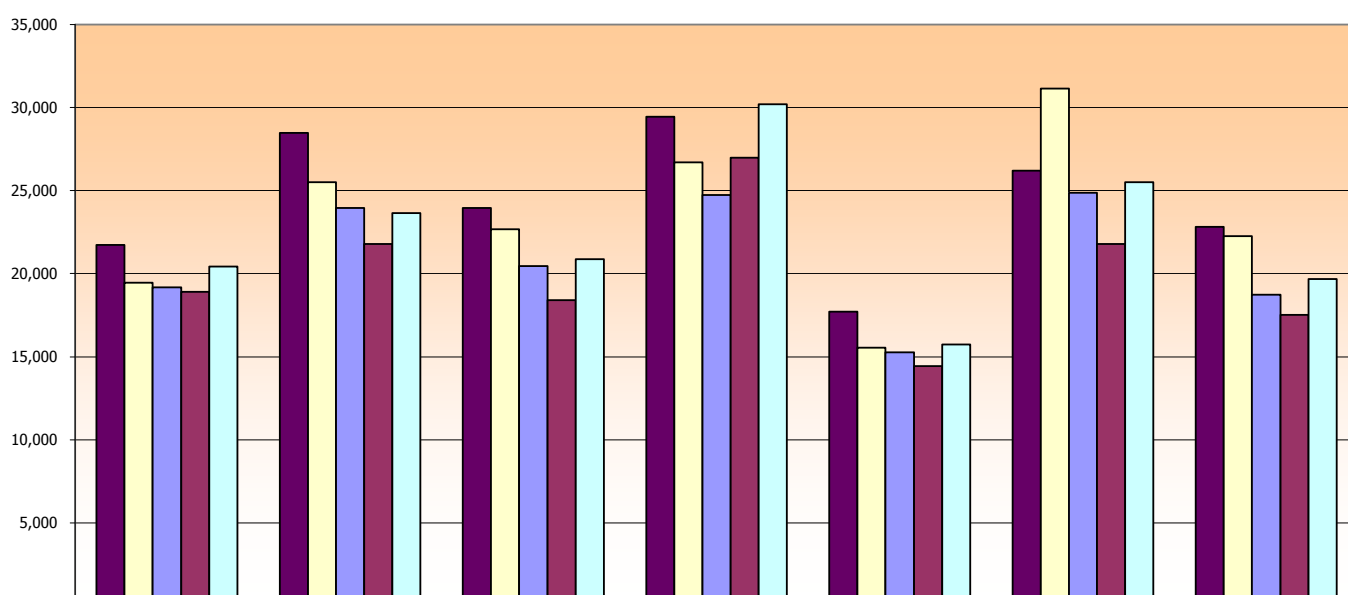
Workload (all sources, all ages) 2004-2009 for Lancashire & South Cumbria Cancer Network.



Workload (GP & NHSCC) 2004-2009 for Lancashire & South Cumbria Cancer Network.

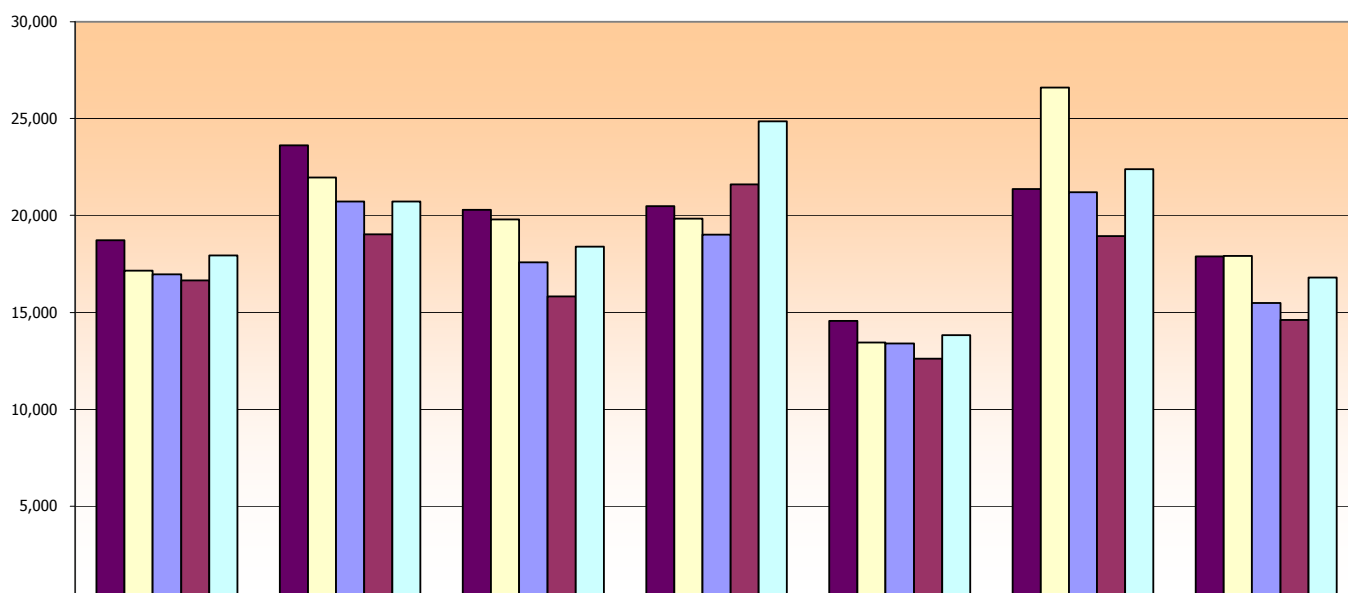


Workload (all sources, all ages) 2004-2009 for Merseyside& Cheshire Cancer Network.



	Aintree	Arrowe Park	Chester	Liverpool	Southport	Warrington	Whiston
■ 2004-05	21,745	28,482	23,962	29,443	17,720	26,215	22,827
□ 2005-06	19,450	25,514	22,687	26,706	15,538	31,143	22,251
■ 2006-07	19,193	23,967	20,455	24,733	15,264	24,883	18,727
■ 2007-08	18,903	21,794	18,411	26,983	14,420	21,784	17,506
□ 2008-09	20,440	23,657	20,881	30,194	15,750	25,510	19,665

Workload (GP & NHSCC) 2004-2009 for Merseyside& Cheshire Cancer Network.



	Aintree	Arrowe Park	Chester	Liverpool	Southport	Warrington	Whiston
■ 2004-05	18,729	23,635	20,296	20,478	14,568	21,371	17,895
□ 2005-06	17,142	21,969	19,802	19,849	13,452	26,597	17,912
■ 2006-07	16,965	20,732	17,582	19,005	13,406	21,186	15,485
■ 2007-08	16,662	19,031	15,815	21,608	12,615	18,936	14,609
□ 2008-09	17,944	20,727	18,402	24,850	13,822	22,390	16,804

Measuring laboratory performance in the North West

2003-04 to 2008-09

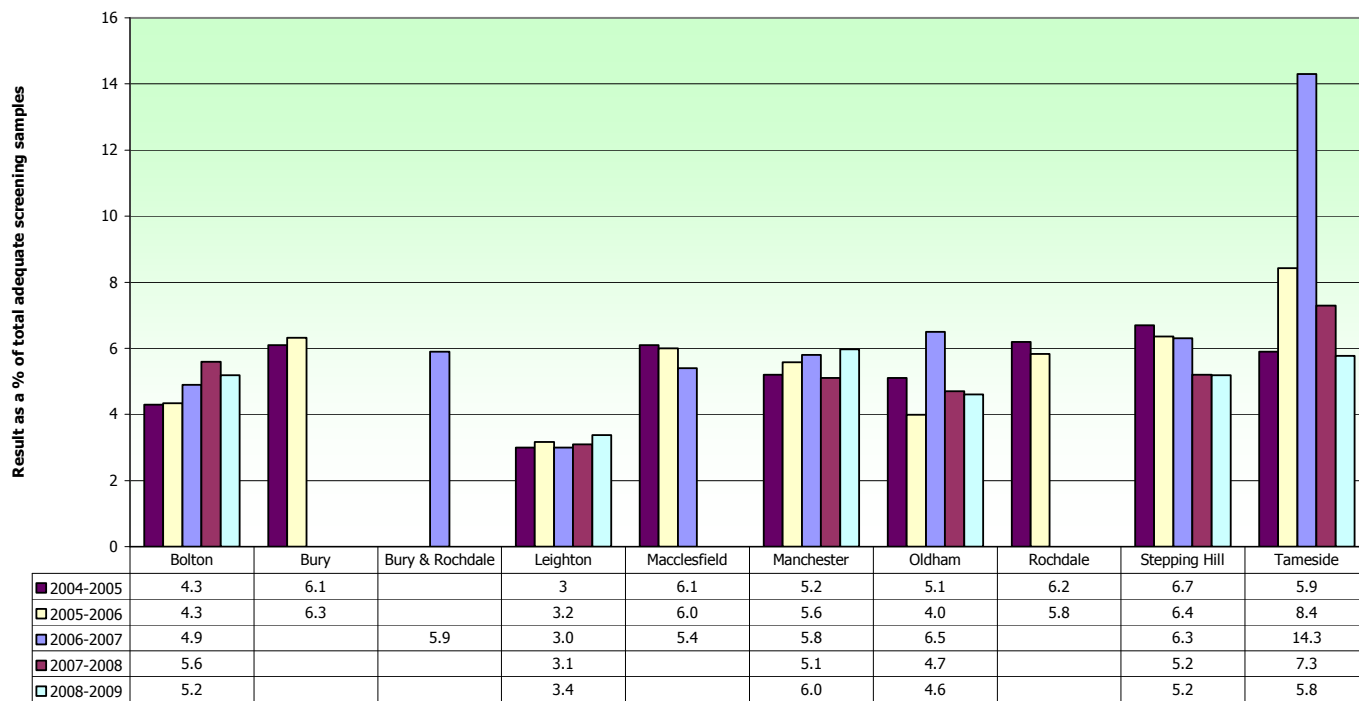
Reporting Profile

Reporting Profile Quality Standards Low Grade 4.0% - 7.5% High Grade 0.8% - 1.5% *											
Laboratory by Cancer Network		2008-2009		2007-2008		2006-2007		2005-2006		2004-2005	
		Low Grade	High Grade	Low Grade	High Grade	Low Grade	High Grade	Low Grade	High Grade	Low Grade	High Grade
		Borderline/Mild	Moderate/Severe & above	Borderline/Mild	Moderate/Severe & above	Borderline/Mild	Moderate/Severe & above	Borderline/Mild	Moderate/Severe & above	Borderline/Mild	Moderate/Severe & above
Lancs & S Cumbria	Blackburn										
	Blackpool	4.8	1.3	5.4	1.2	6.5	1.7	4.8	0.8	4.9	0.7
	East Lancashire Hos	5.7	0.9	5.8	0.7	5.6	0.7	4.6	1.1	4.2	1.1
	Burnley							6.2	0.8	5.8	0.5
	Chorley	6.4	1.3	6.9	1.1	6.4	1.4	5.0	1.0	4	0.8
	Lancaster	5.4	1.0	6.5	1.0	5.9	0.9	5.0	0.7	6.1	1.4
Manchester & Cheshire	Bolton	5.2	1.1	5.6	1.0	4.9	1.2	4.3	0.9	4.3	0.9
	Bury							6.3	1.0	6.1	0.8
	Bury & Rochdale					5.9	1.2				
	Leighton	3.4	1.1	3.1	0.8	3.0	0.8	3.2	0.8	3	1.0
	Macclesfield					5.4	0.8	6.0	0.7	6.1	0.8
	Manchester	6.0	1.1	5.1	1.0	5.8	1.5	5.6	0.9	5.2	0.8
	Oldham	4.6	1.0	4.7	1.1	6.5	1.1	4.0	1.0	5.1	0.7
	Rochdale							5.8	1.2	6.2	1.0
	Stepping Hill	5.2	1.4	5.2	1.2	6.3	1.0	6.4	0.8	6.7	1.1
	Tameside	5.8	0.8	7.3	0.6	14.3	0.8	8.4	1.2	5.9	0.8
Merseyside & Cheshire	Aintree	7.5	2.0	8.1	1.4	5.9	1.1	7.0	1.2	4.8	0.9
	Arrove Park	6.5	1.2	6.4	0.7	6.0	0.7	6.6	0.7	4.9	0.9
	Chester	5.7	1.1	5.2	1.0	5.3	0.9	3.9	0.9	5.2	1.0
	Liverpool	5.1	1.7	5.3	1.3	5.2	1.2	5.5	1.4	5.2	1.5
	Southport	7.5	0.9	10.0	1.4	7.2	1.1	6.0	1.3	3.7	1.1
	Warrington	4.4	1.2	5.2	1.4	4.6	1.3	5.4	1.4	3.5	1.2
	Whiston	5.7	1.0	5.6	0.8	5.5	1.0	4.7	1.0	4.7	1.0
	Northern	Carlisle	5.4	1.2	5.8	1.0	6.5	1.1	6.1	1.0	5.6

* All reporting profiles are taken from the 10th to 90th percentile range 2008-2009 as shown in Cervical Screening Programme England 2008-09

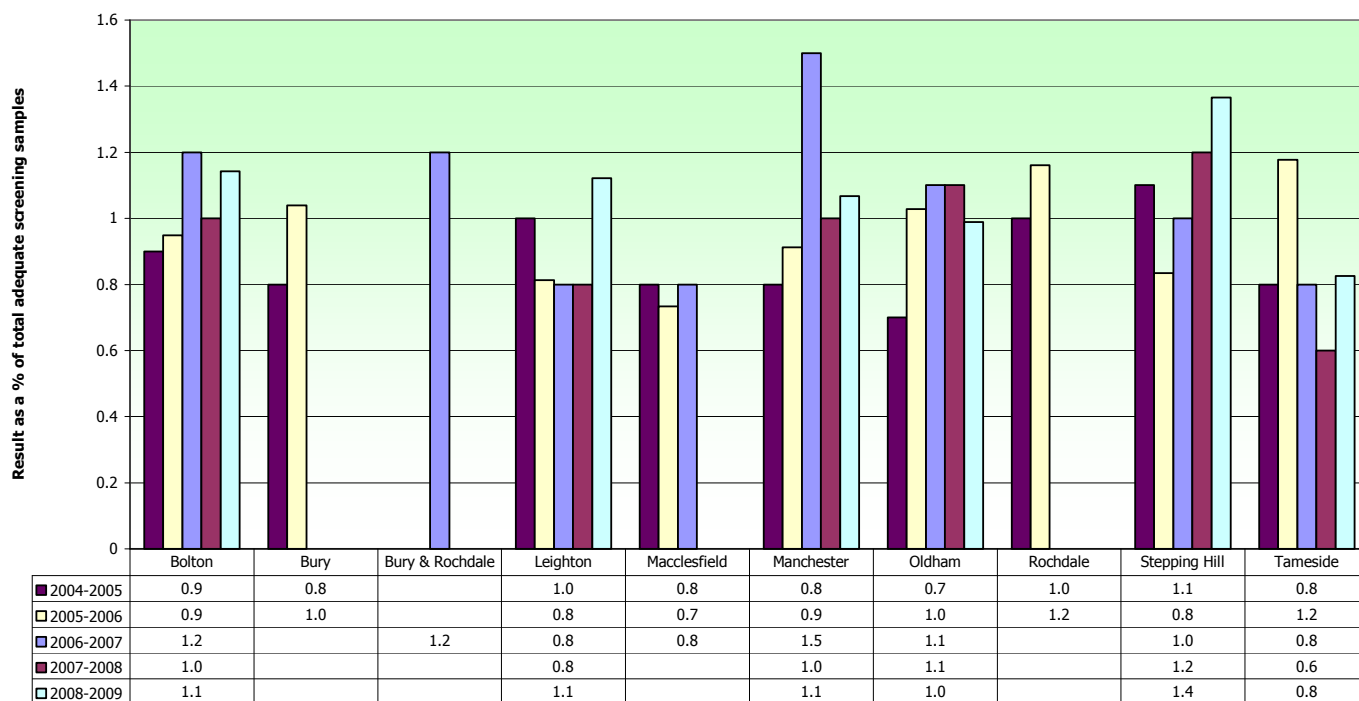
Source Cervical Screening Programme, England:2008-09 : Table 19 © 2009, The Health and Social Care Information Centre

Laboratory Reporting Profiles for Low Grade (Borderline/Mild) Sample Results for Greater Manchester & Cheshire Cancer Network 2004 - 2009



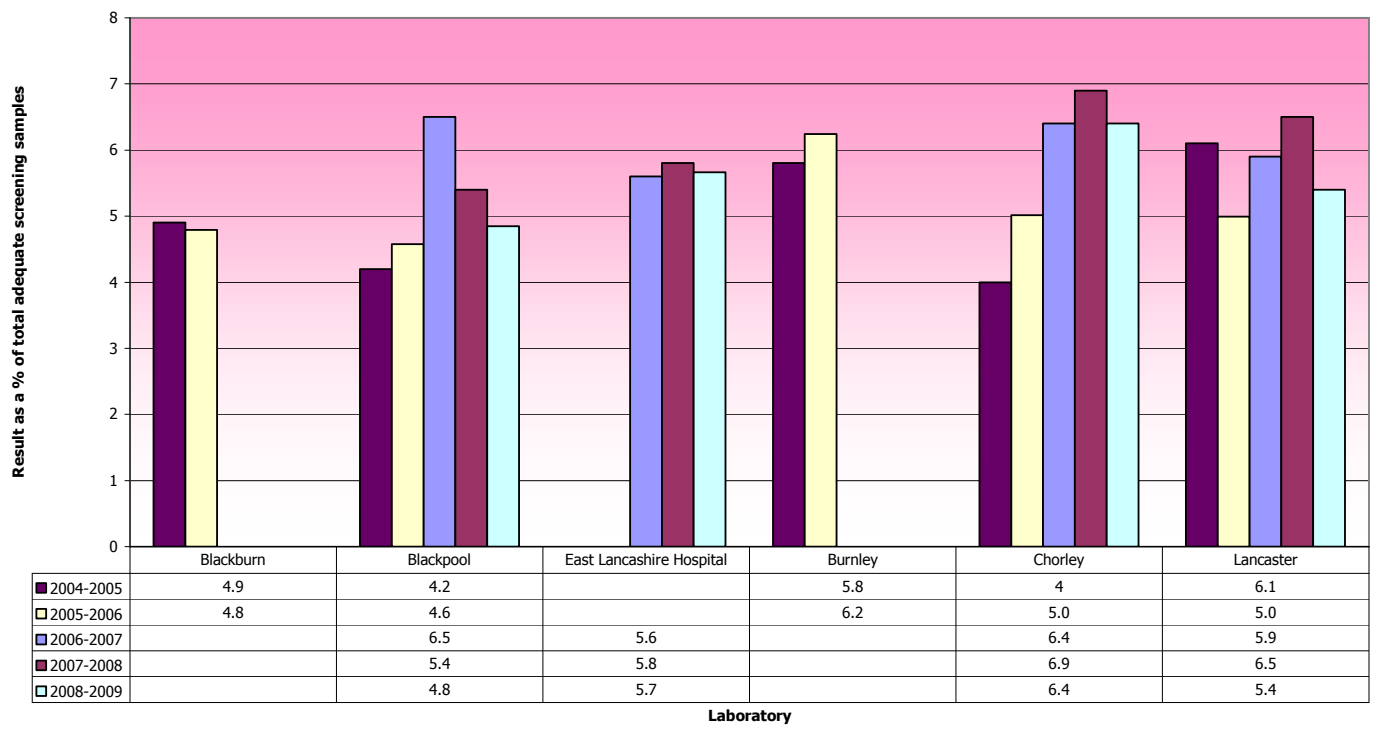
Laboratory

Laboratory Reporting Profiles for High Grade (Moderate/Severe & above) Sample Results for Greater Manchester & Cheshire Cancer Network 2004 - 2009

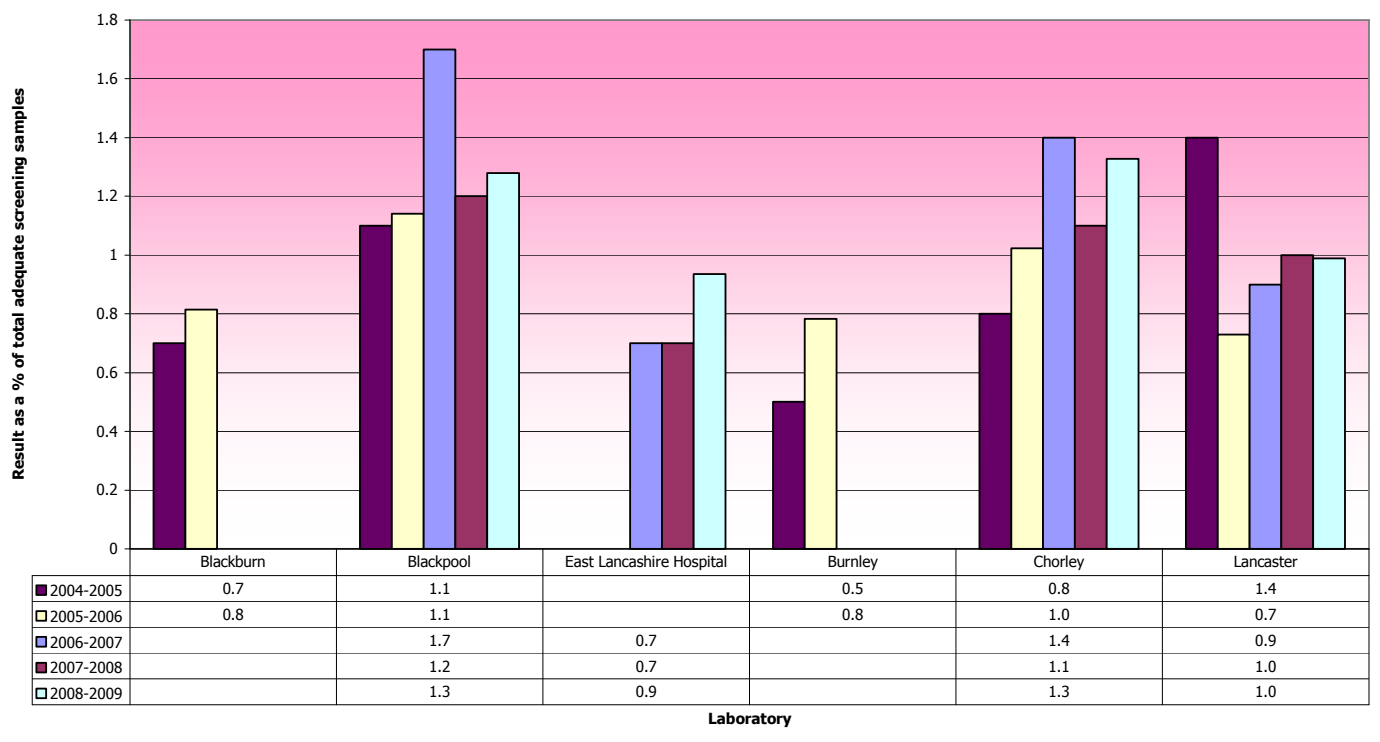


Laboratory

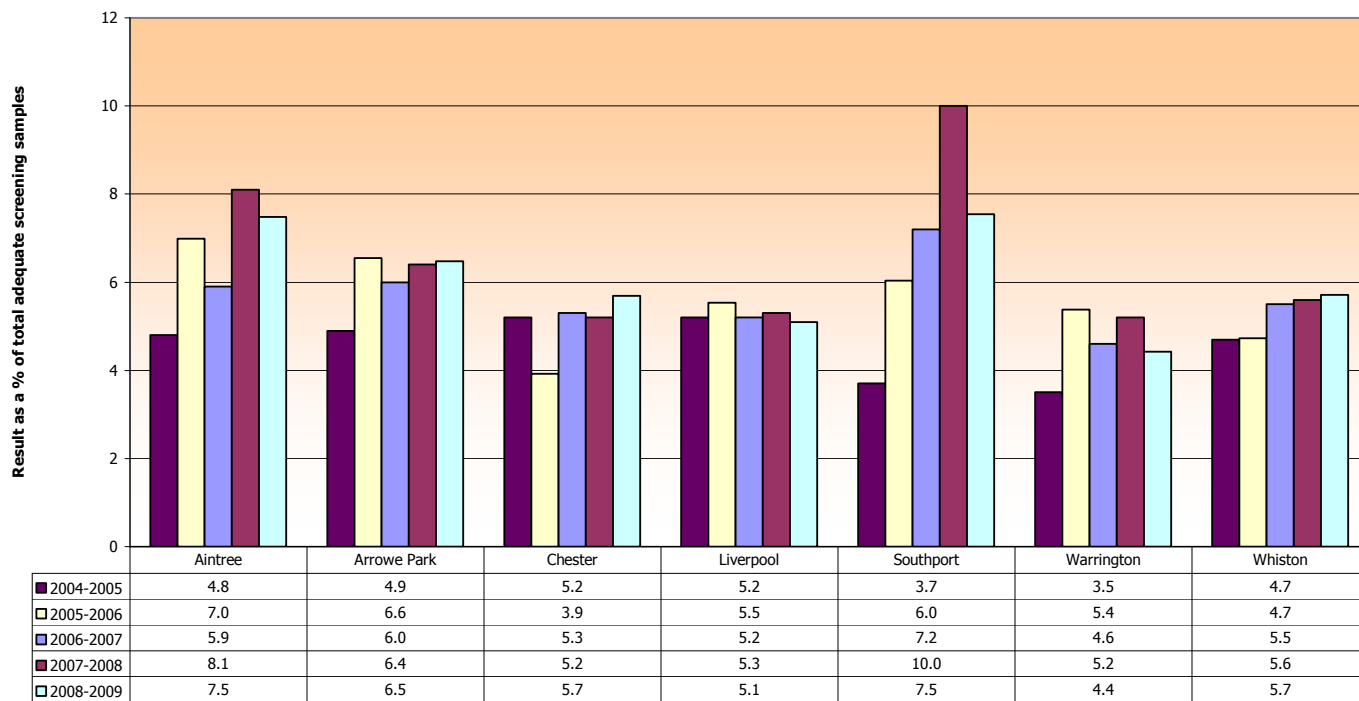
Laboratory Reporting Profiles for Low Grade (Borderline/Mild) Sample Results for Lancashire & South Cumbria Cancer Network 2004 - 2009



Laboratory Reporting Profiles for High Grade (Moderate/Severe and above) Sample Results for Lancashire & South Cumbria Cancer Network 2004 - 2009

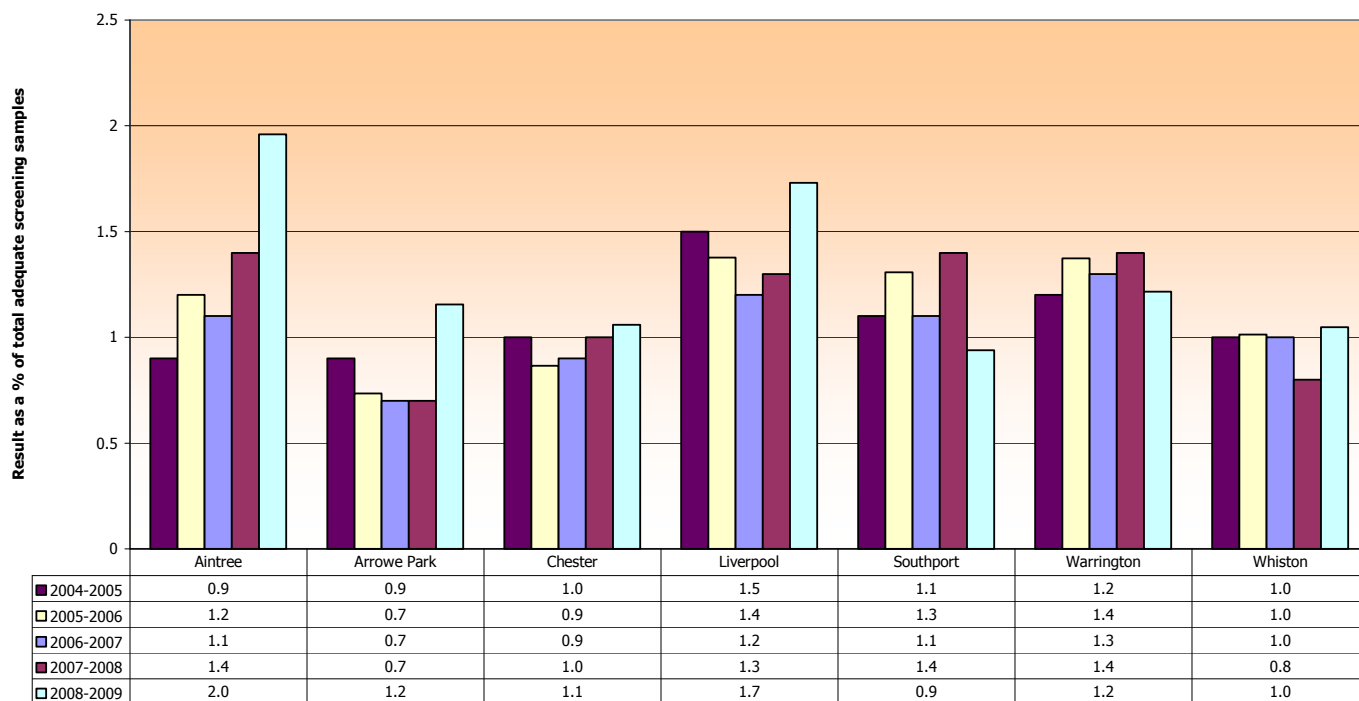


Laboratory Reporting Profiles for Low Grade (Borderline/Mild) Sample Results for Merseyside & Cheshire Cancer Network 2004 - 2009



Laboratory

Laboratory Reporting Profiles for High Grade (Moderate/Severe and above) Sample Results for Merseyside & Cheshire Cancer Network 2004 - 2009



Laboratory

Measuring laboratory performance in the North West

2003-04 to 2008-09

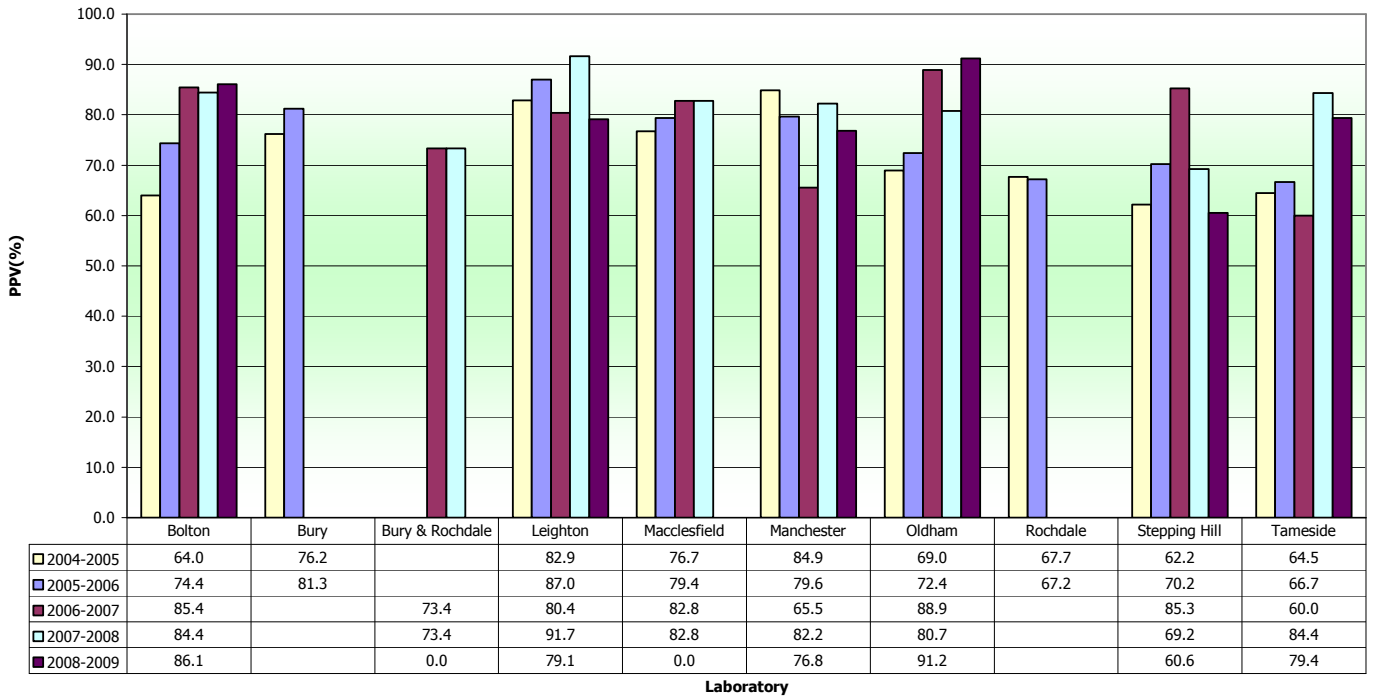
PPV%

Correlation of Cytology & Histology Quality Standard 75.3% to 88.6%		Positive Predictive Value (%)									
		2008-2009		2007-2008		2006-2007		2005-2006		2004-2005	
Laboratory by Cancer Network		Part C1 Apr 08 - Jun 08	Part C2 Apr 07 - Mar 08	Part C1 Apr 07 - Jun 07	Part C2 Apr 06 - Mar 07	Part C1 Apr 06 - Jun 06	Part C2 Apr 05 - Mar 06	Part C1 Apr 05 - Jun 05	Part C2 Apr 04 - Mar 05	Part C1 Apr 04 - Jun 04	Part C2 Apr 03 - Mar 04
Lancs & S Cumbria	Blackburn							59.3	59.9	74.2	71.0
	Blackpool	95.9	85.2	81.2	83.0	87.1	85.1	82.5	83.4	92.1	77.6
	Burnley							86.7	82.3	83.3	72.7
	East Lancashire	64.0	70.4	77.9	79.0	85.9	80.9				
	Chorley	85.4	84.9	89.8	83.3	75.0	82.1	80.3	80.8	69.2	74.6
	Lancaster	73.6	77.6	85.7	73.7	61.9	79.0	68.6	71.9	63.8	67.9
Manchester & Cheshire	Bolton	86.1	84.9	84.4	86.9	85.4	79.8	74.4	73.8	64.0	74.2
	Bury							81.3	82.1	76.2	72.2
	Bury & Rochdale			73.4		73.4					
	Leighton	79.1	85.0	91.7	84.9	80.4	88.6	87.0	86.8	82.9	79.7
	Macclesfield			82.8	84.2	82.8	84.2	79.4	76.2	76.7	70.7
	Manchester	76.8	80.2	82.2	67.9	65.5	80.6	79.6	80.6	84.9	77.7
	Oldham	91.2	84.8	80.7	77.3	88.9	76.5	72.4	78.9	69.0	65.8
	Rochdale							67.2	73.6	67.7	70.1
	Stepping Hill	60.6	74.2	69.2	73.4	85.3	75.2	70.2	73.0	62.2	70.4
	Tameside	79.4	88.6	84.4	75.7	60.0	71.5	66.7	69.2	64.5	85.9
Merseyside & Cheshire	Aintree	82.8	83.8	83.1	79.4	66.2	80.7	89.4	85.5	85.7	79.9
	Arrowe Park	95.1	87.6	89.1	86.4	86.8	81.5	80.4	80.7	84.2	76.7
	Chester	81.8	93.1	93.9	89.2	86.3	85.6	81.6	74.0	74.5	69.5
	Liverpool	89.9	86.9	92.9	91.1	89.7	84.7	82.7	84.6	84.0	85.3
	Southport	78.3	75.3	76.6	73.6	65.9	70.5	68.1	76.6	75.0	65.9
	Warrington	87.5	83.7	87.0	90.6	89.9	85.6	84.6	85.1	85.5	79.5
	Whiston	90.6	85.6	96.7	82.8	76.8	78.9	86.2	81.7	76.6	77.1
Northern	Carlisle	83.0	86.7	88.2	86.7	84.5	90.9	91.4	82.3	82.1	85.4

Source Cervical Screening Programme, England:2008-09: Table 19 © 2009, The Health and Social Care Information Centre

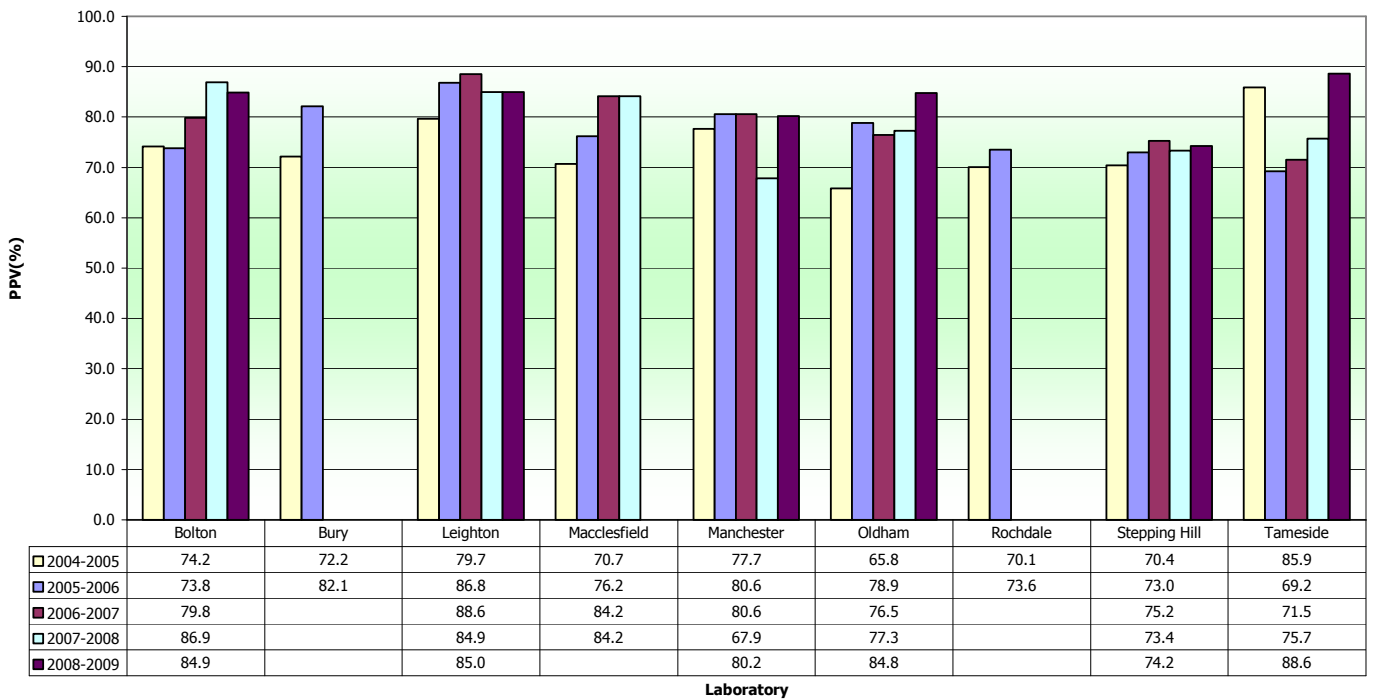
Positive Predictive Value (C1) by Laboratory 2004-2009 for Greater Manchester & Cheshire Cancer Network.

Standard 75.3% to 88.6%



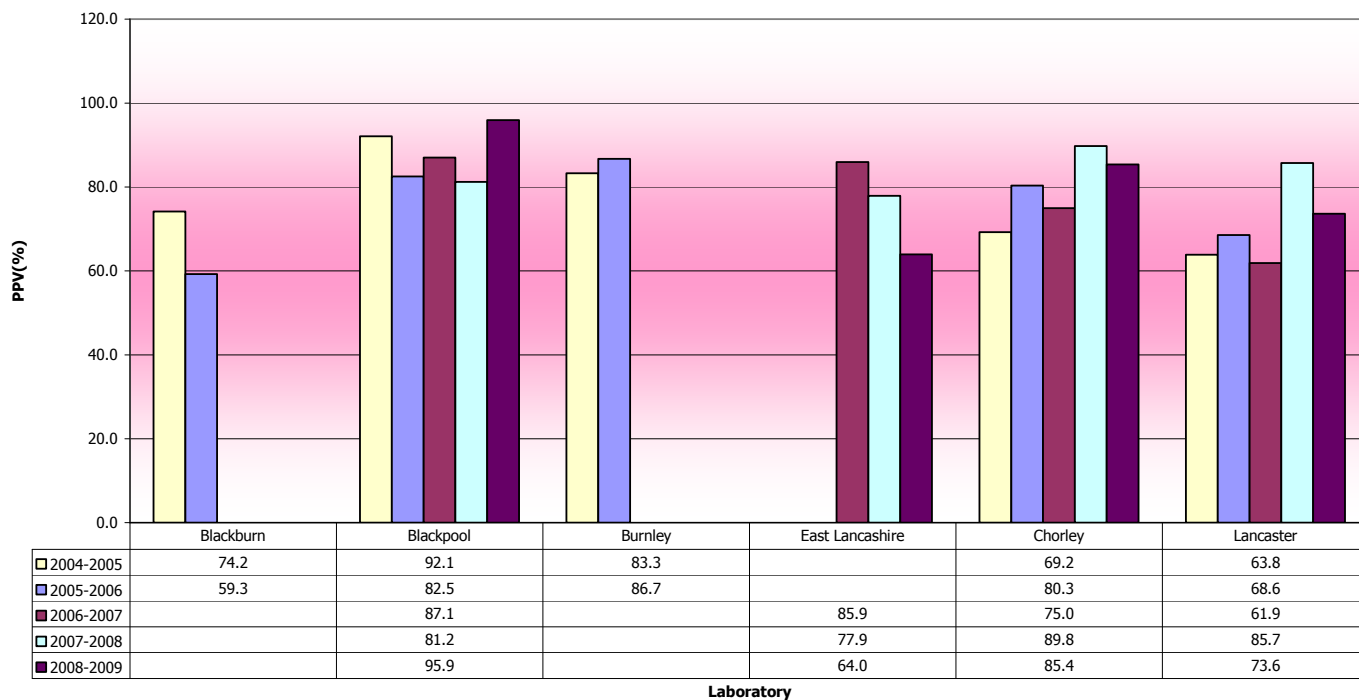
Positive Predictive Value (C2) by Laboratory 2004 - 2009 for Greater Manchester & Cheshire Cancer Network.

Standard 75.3% to 88.6%



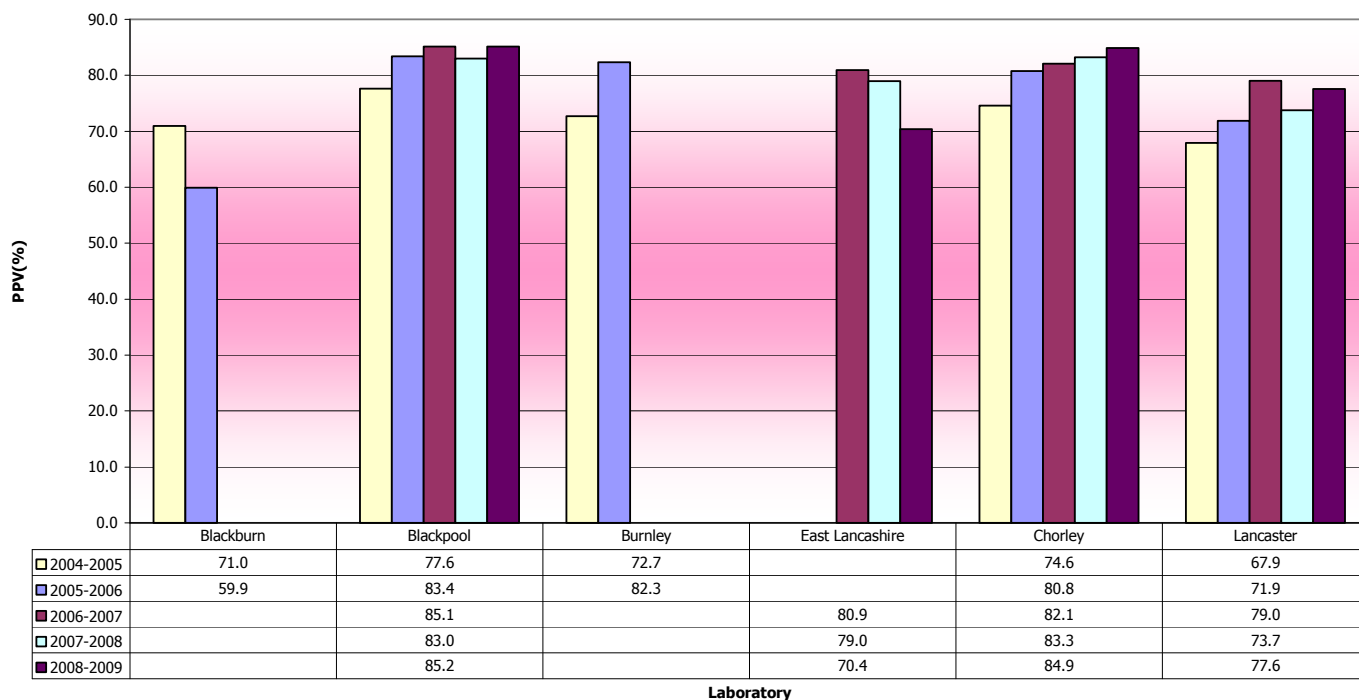
Positive Predictive Value (C1) by Laboratory 2004-2009 for Lancashire & South Cumbria Cancer Network.

Standard 75.3% to 88.6%



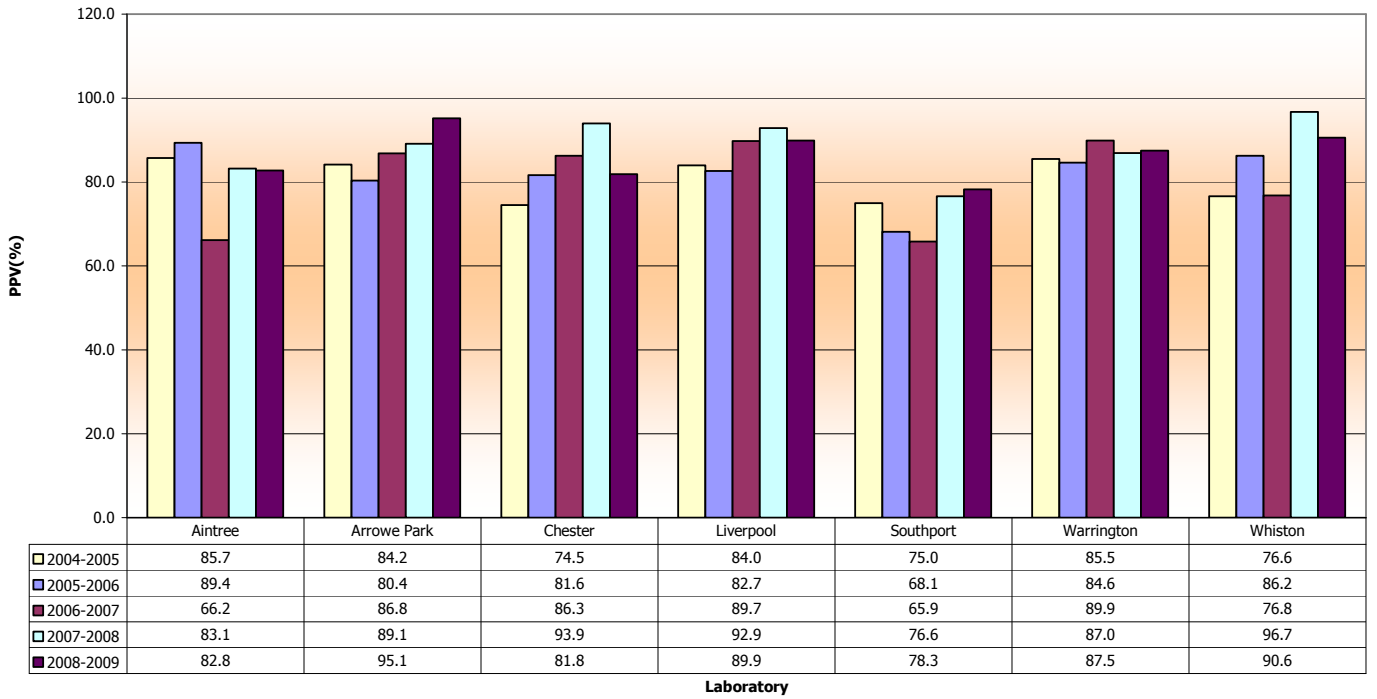
Positive Predictive Value (C2) by Laboratory 2004-2009 for Lancashire & South Cumbria Cancer Network.

Standard 75.3% to 88.6%



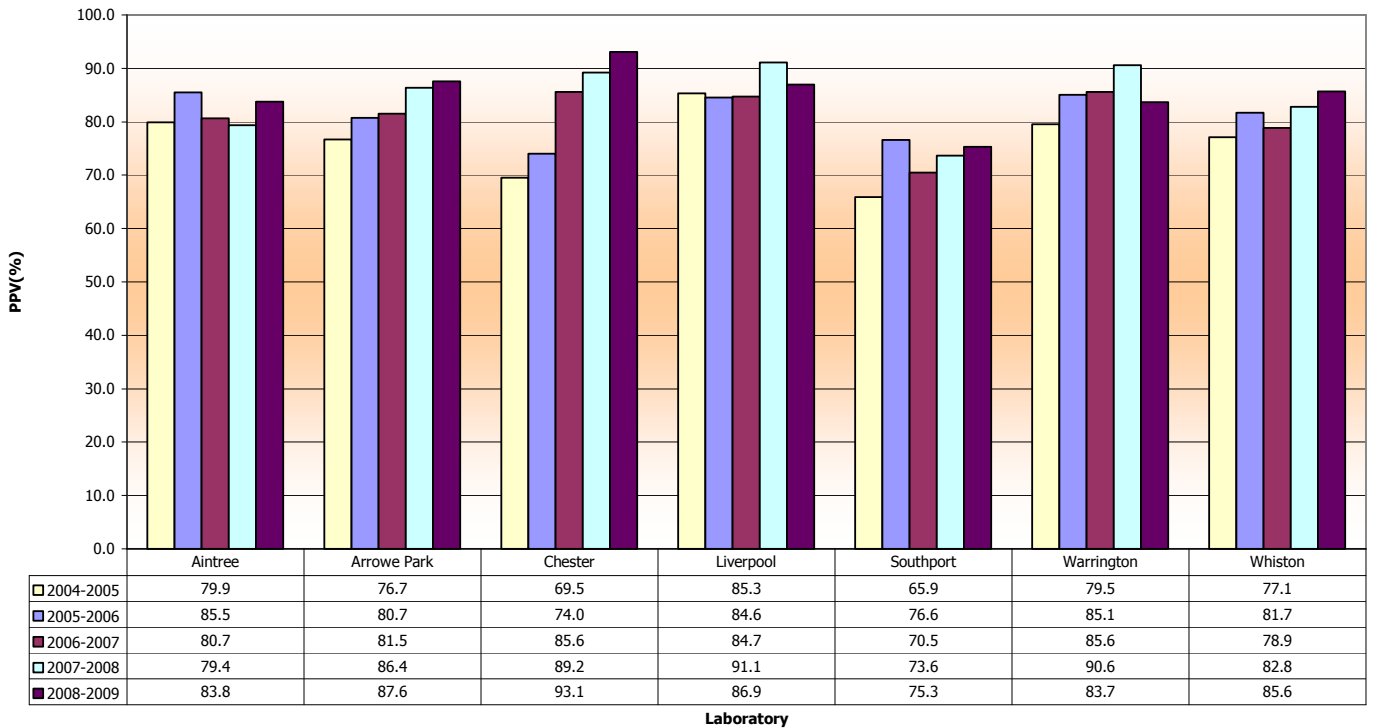
Positive Predictive Value (C1) by Laboratory 2004-2009 for Merseyside & Cheshire Cancer Network.

Standard 75.3% to 88.6%



Positive Predictive Value (C2) by Laboratory 2004-2009 for Merseyside & Cheshire Cancer Network.

Standard 75.3% to 88.6%



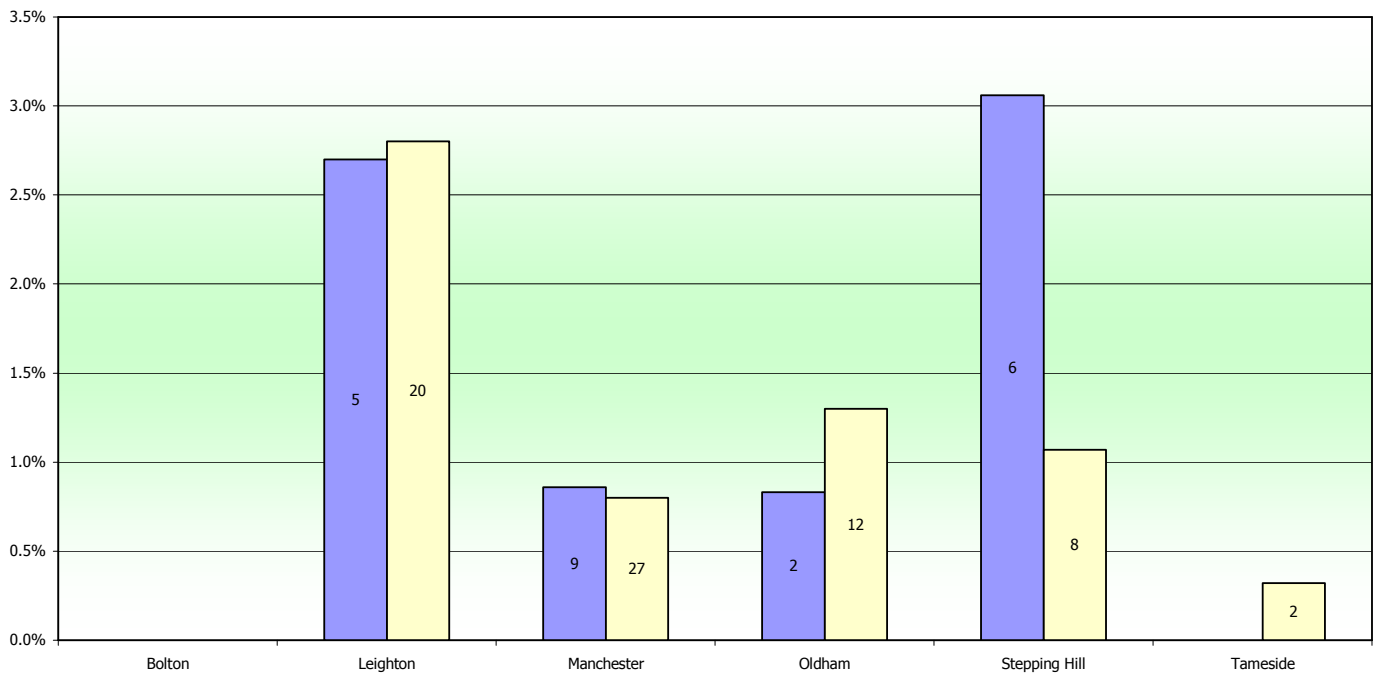
KC61 Parts C1 & C2 Lost to follow up as a percentage (target < 5%) and number

Laboratory by Cancer Network		Lost to follow up (C1)		Lost to follow up (C2)	
		%	number	%	number
		Lancs & S Cumbria	Blackpool	4.5%	10
Chorley	3.7%		11	1.3%	9
East Lancash	0.0%		0	1.0%	12
Lancaster	0.0%		0	0.0%	0
Manchester & Cheshire	Bolton	0.0%	0	0.0%	0
	Leighton	2.7%	5	2.8%	20
	Manchester	0.9%	9	0.8%	27
	Oldham	0.8%	2	1.3%	12
	Stepping Hill	3.1%	6	1.1%	8
	Tameside	0.0%	0	0.3%	2
Merseyside & Cheshire	Aintree	0.8%	3	1.0%	12
	Arrowe Park	0.0%	0	0.0%	0
	Chester	0.0%	0	1.6%	8
	Liverpool	2.0%	4	1.9%	12
	Southport	2.7%	3	0.4%	2
	Warrington	2.2%	4	3.0%	24
	Whiston	0.6%	1	0.4%	3
Northern	Carlisle	0.8%	1	1.3%	8

KC61 Parts C1 & C2 - Lost to follow up as a percentage (number in columns equals number of women).
Greater Manchester & Cheshire Cancer Network

Target < 5%

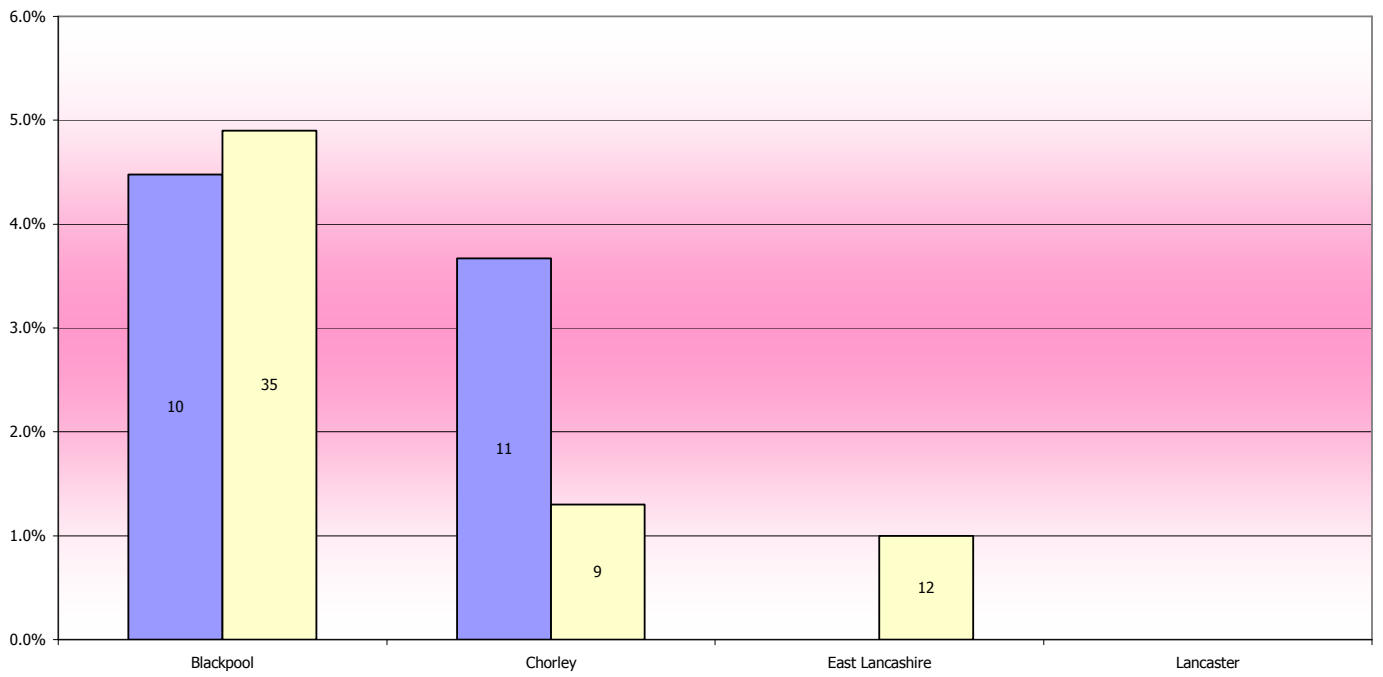
■ Lost to follow up (C1) % □ Lost to follow up (C2) %



KC61 Parts C1 & C2 - Lost to follow up as a percentage (number in columns equals number of women). Lancashire & South Cumbria Cancer Network

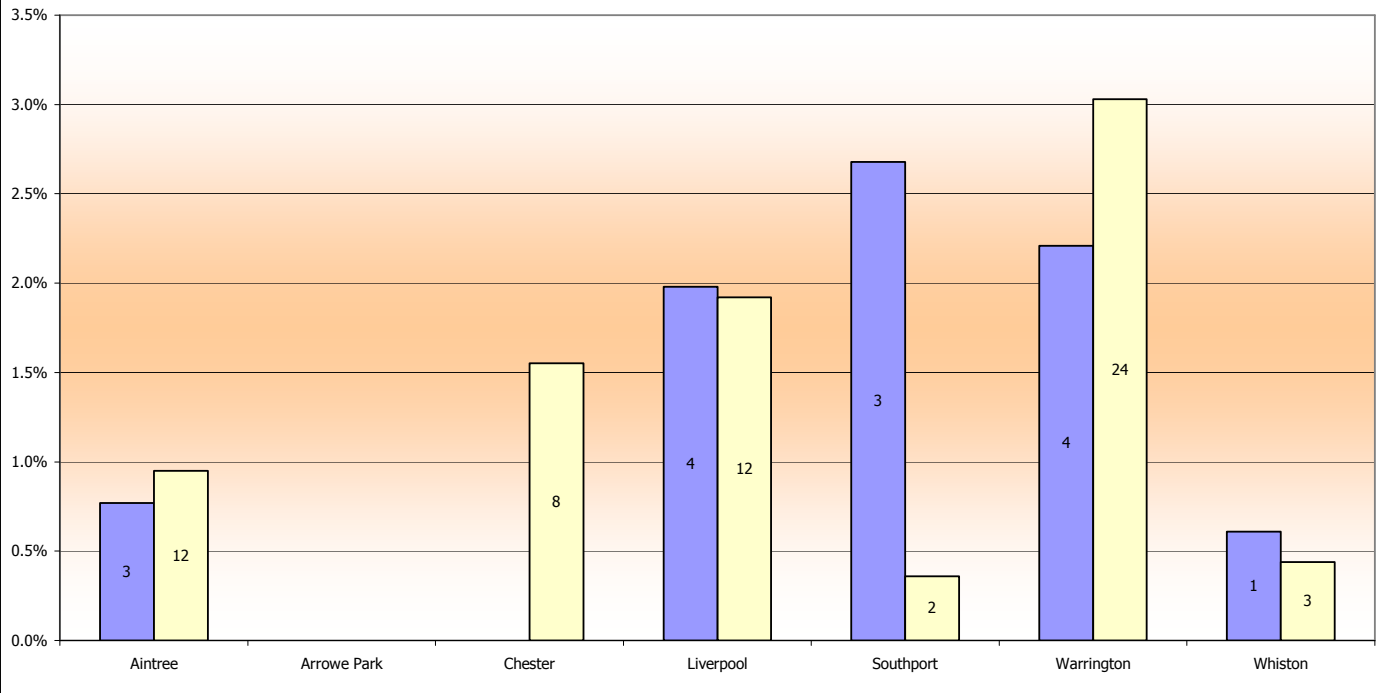
Target < 5%

■ Lost to follow up (C1) % □ Lost to follow up (C2) %



KC61 Parts C1 & C2 - Lost to follow up as a percentage (number in columns equals number of women).
Merseyside & Cheshire Cancer Network
 Target < 5%

■ Lost to follow up (C1) % □ Lost to follow up (C2) %



Measuring laboratory performance in the North West

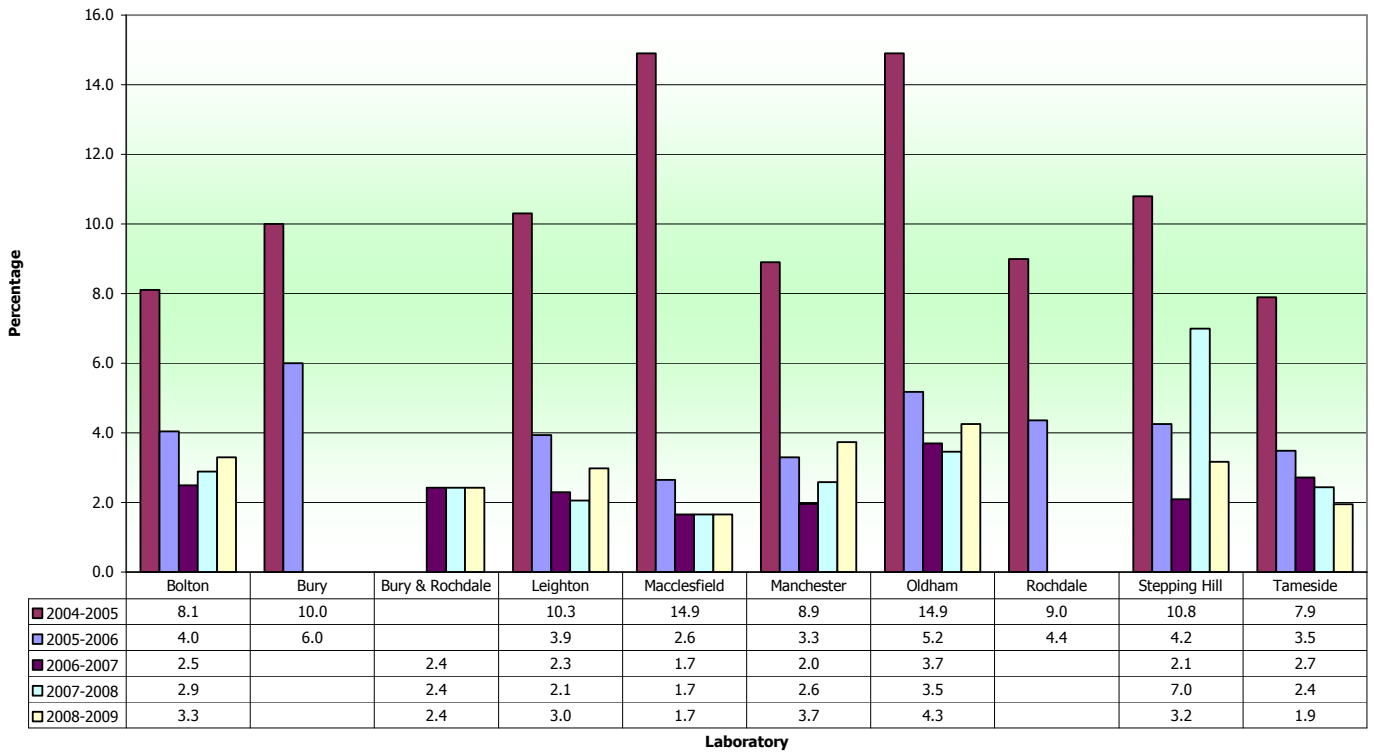
2004-05 to 2008-09

Inadequate Smears

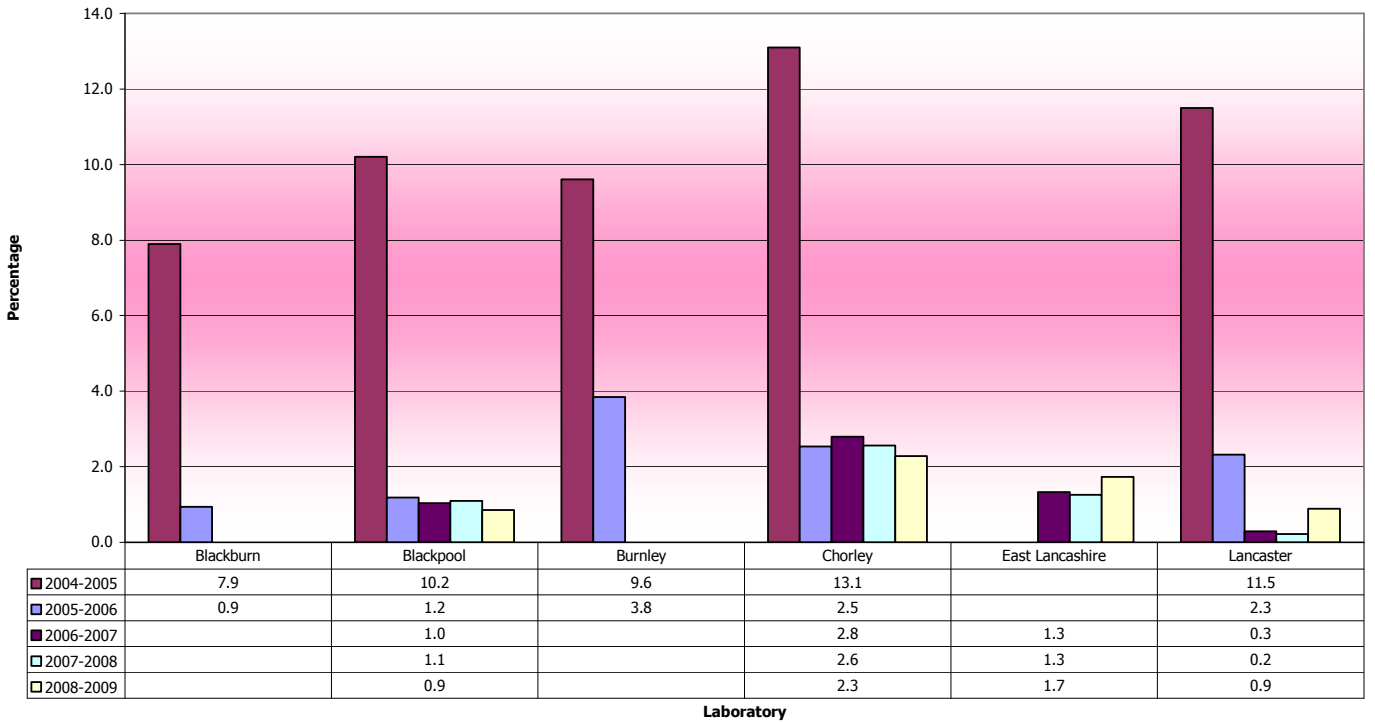
Laboratory by Cancer Network		Inadequate Rate (%)				
		2008-2009	2007-2008	2006-2007	2005-2006	2004-2005
		(%)	(%)	(%)	(%)	(%)
Lancs & S Cumbria	Blackburn				0.9	7.9
	Blackpool	0.9	1.1	1.0	1.2	10.2
	Burnley				3.8	9.6
	Chorley	2.3	2.6	2.8	2.5	13.1
	East Lancashire	1.7	1.3	1.3		
	Lancaster	0.9	0.2	0.3	2.3	11.5
Manchester & Cheshire	Bolton	3.3	2.9	2.5	4.0	8.1
	Bury				6.0	10.0
	Bury & Rochdale	2.4	2.4	2.4		
	Leighton	3.0	2.1	2.3	3.9	10.3
	Macclesfield	1.7	1.7	1.7	2.6	14.9
	Manchester	3.7	2.6	2.0	3.3	8.9
	Oldham	4.3	3.5	3.7	5.2	14.9
	Rochdale				4.4	9.0
	Stepping Hill	3.2	7.0	2.1	4.2	10.8
	Tameside	1.9	2.4	2.7	3.5	7.9
Merseyside & Cheshire	Aintree	2.8	2.6	0.9	0.9	12.2
	Arrowe Park	2.3	2.4	1.9	2.0	12.9
	Chester	3.6	3.4	3.5	4.8	12.4
	Liverpool	5.9	6.1	7.4	5.0	15.0
	Southport	1.4	1.0	1.1	1.2	10.2
	Warrington	4.8	3.8	1.5	5.5	14.3
	Whiston	1.8	1.8	1.5	7.0	17.9
Northern	Carlisle	1.0	0.9	0.5	0.6	5.7
Average		2.6	2.6	2.2	3.4	11.3

Source Cervical Screening Programme, England:2008-09: Table 19 © 2009, The Health and Social Care Information Centre

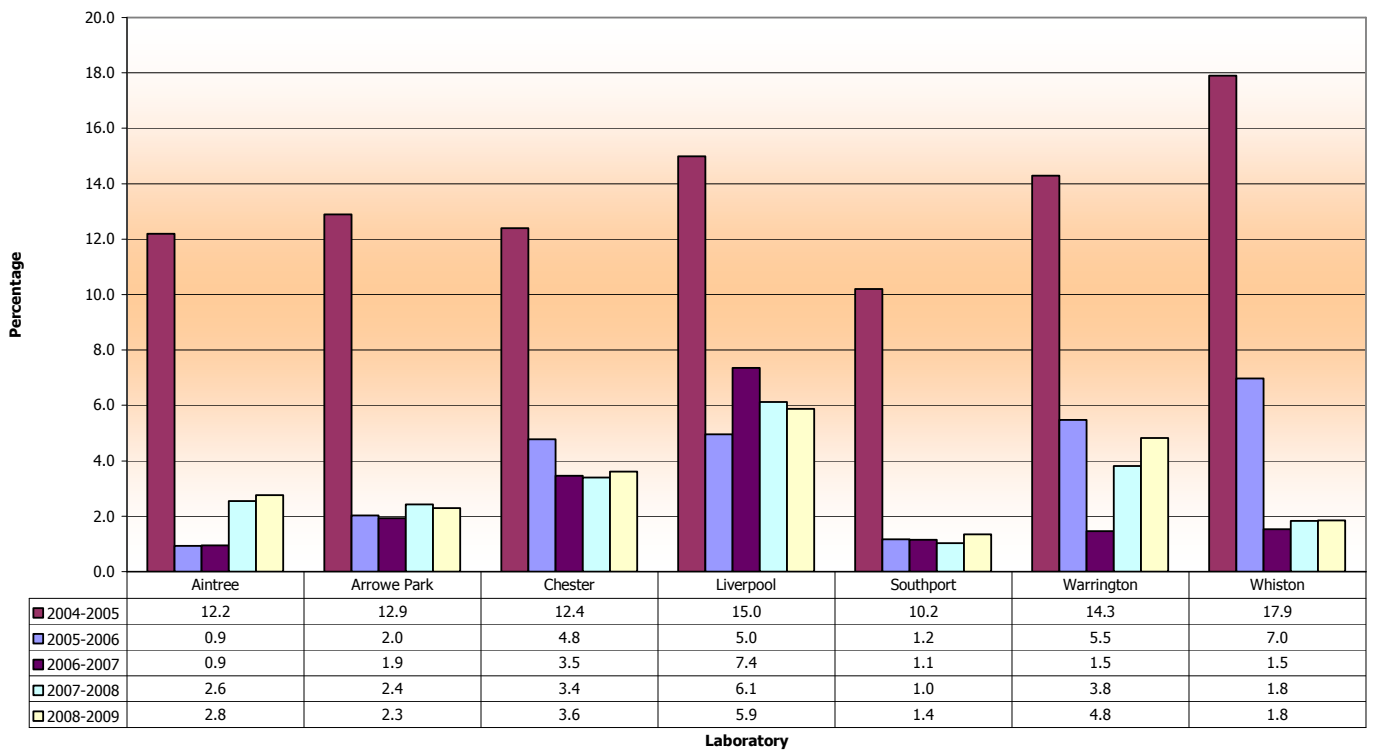
Inadequate Rates by Laboratory 2004-2009 for Greater Manchester & Cheshire Cancer Network



Inadequate Rates by Laboratory 2004-2009 for Lancashire & South Cumbria Cancer Network



Inadequate Rates by Laboratory 2004-2009 for Merseyside & Cheshire Cancer Network



DOH Return KC65

Measuring Colposcopy clinic performance in the North West

1st April 2008 to 31st March 2009

Colposcopy unit by Cancer Network		Percentage of all referrals seen within 8 weeks (standard 90%)			
		Apr 08 - Mar 09	Apr 07 - Mar 08	Apr 06 - Mar 07	Apr 05 - Mar 06
Lancs & S Cumbria	Blackburn	95	89	87	76
	Blackpool	99	87	88	91
	Burnley	97	96	90	95
	Furness	99	100	99	100
	Lancaster	97	98	96	91
	Sharoe Green	99	98	99	97
	Westmorland	97	99	91	89
Manchester & Cheshire	Bolton	92	93	74	83
	Bury	97	95	96	91
	Central Manchester	98	92	93	96
	Dawes Family Practice**	99	100	100	100
	Hope Hospital	100	97	97	92
	Leighton	96	99	90	82
	Macclesfield	93	88	85	86
	Monarch Medical Centre**	100	100	100	100
	North Manchester	99	98	96	72
	Oldham	100	99	100	99
	Palatine Centre**	100	100	100	100
	Rochdale	91	88	89	94
	Stepping Hill	95	87	73	51
	Tameside	99	98	98	99
	Trafford	93	46	76	59
	Waters Green Medical Centr	96	98	95	100
Wigan	98	98	78	72	
Withington	69	70	81	82	
Wythenshawe	78	97	99	99	
Merseyside & Cheshire	Aintree	96	100	100	86
	Arrowe Park	100	100	100	100
	Chester	99	100	93	69
	Liverpool	99	95	97	98
	LWH	99	99	99	100
	Southport & Formby	99	95	89	68
	Southport & Ormskirk	99	96	92	92
	Warrington	100	99	95	91
	Whiston	99	96	93	97
Northern	Cumberland Infirmary	96	80	94	97
	West Cumberland				57

North West Regional
Average
** GP based practices

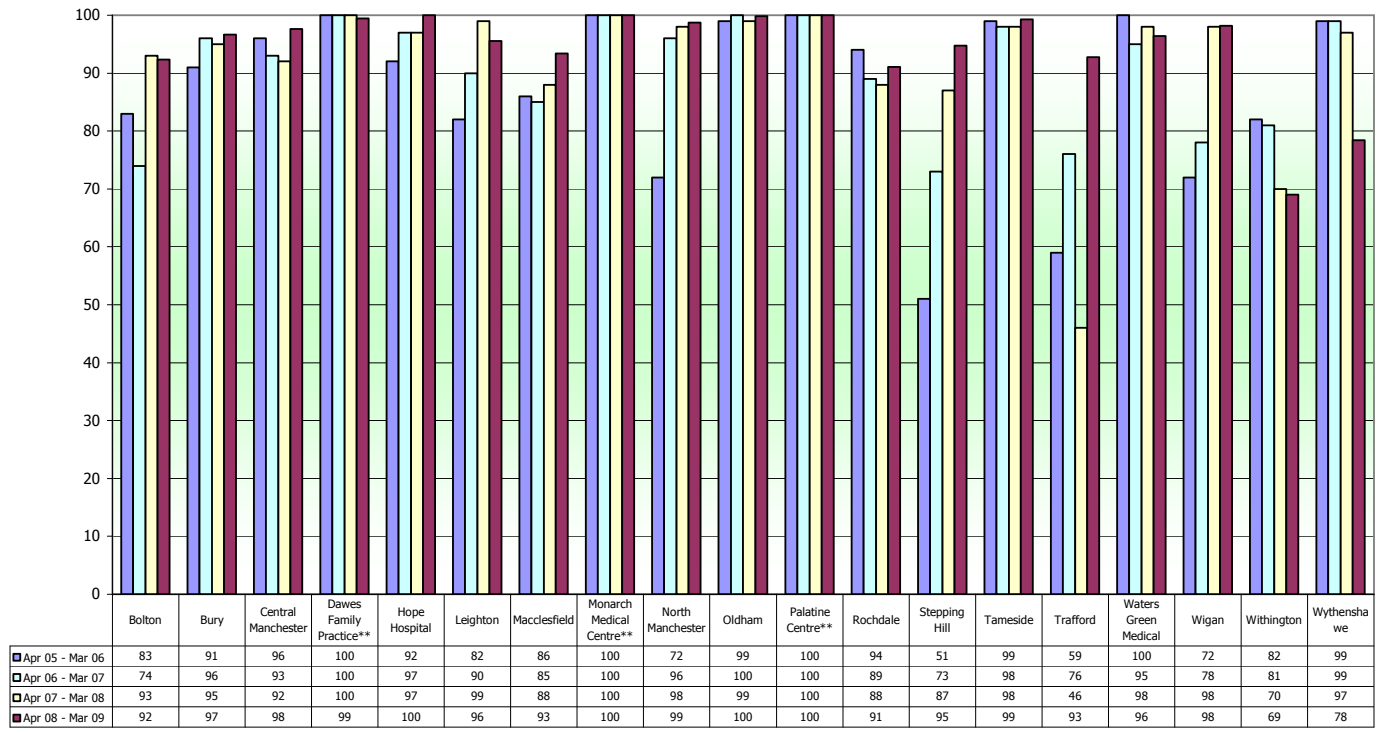
96

94

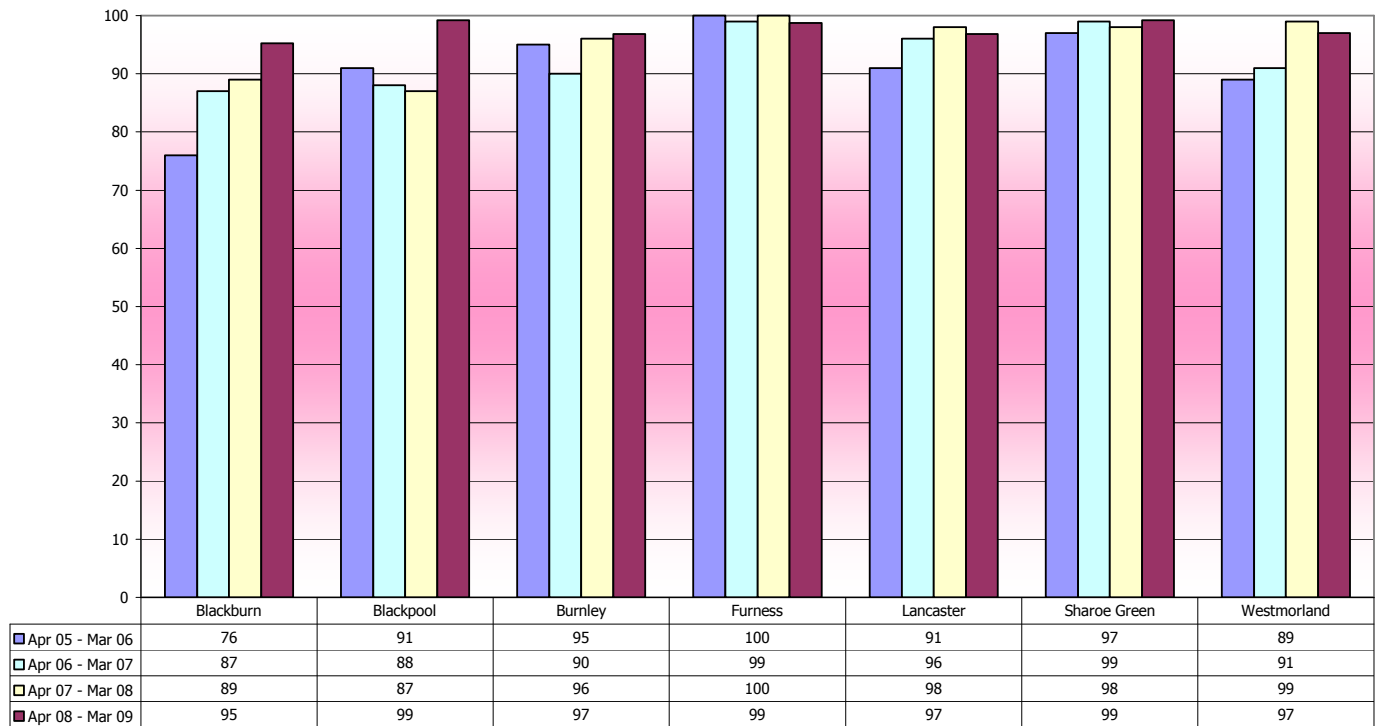
92

88

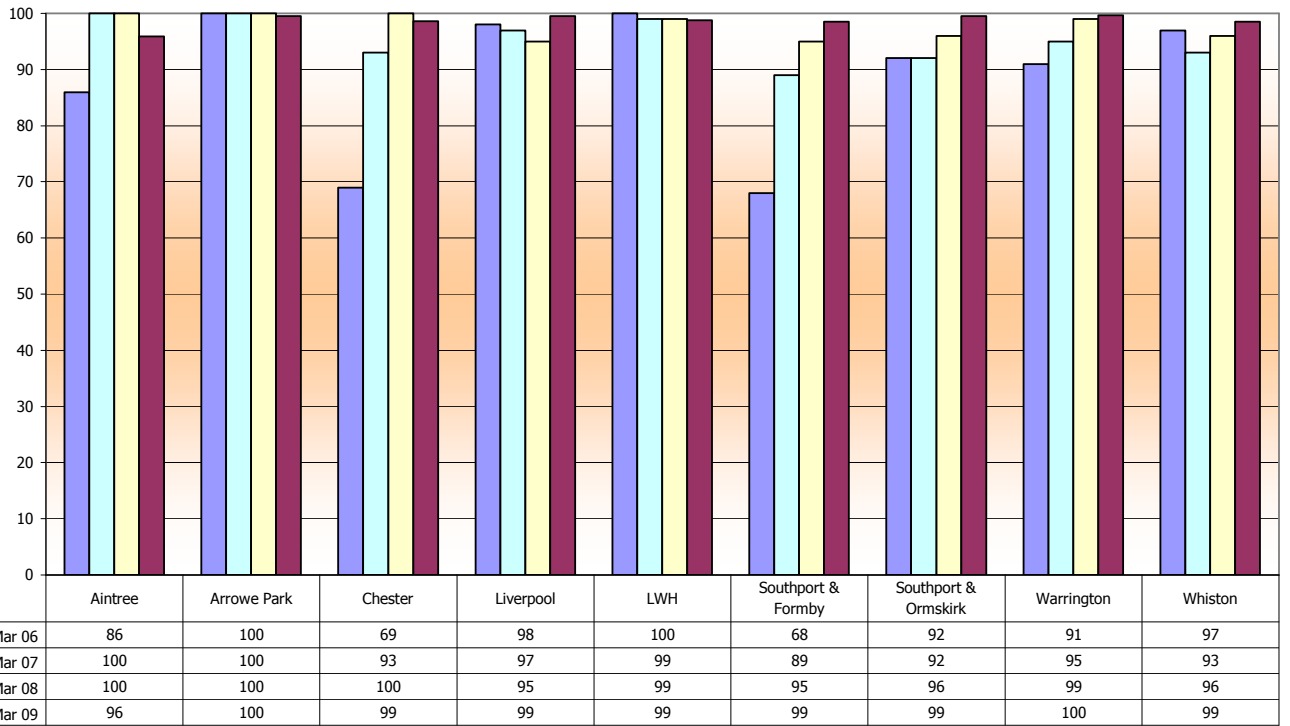
**Percentage of all referrals seen within 8 weeks (standard 90%) 2005-06 to 2008-09
Greater Manchester & Cheshire Cancer Network**



**Percentage of all referrals seen within 8 weeks (standard 90%) 2005-06 to 2008-09
Lancashire & South Cumbria Cancer Network**



**Percentage of all referrals seen within 8 weeks (standard 90%) 2005-06 to 2008-09
Merseyside & Cheshire Cancer Network**



Percentage of moderate & above seen within 4 weeks (standard 90%)

Colposcopy unit by Cancer Network		Apr 08 - Mar 09	Apr 07 - Mar 08	Apr 06 - Mar 07	Apr 05 - Mar 06	Apr 04 - Mar 05
Lancs & S Cumbria	Blackburn	76	69	64	47	34
	Blackpool	86	69	69	76	66
	Burnley	64	64	70	75	49
	Furness	97	98	98	92	95
	Lancaster	88	81	81	76	94
	Sharoe Green	93	88	85	87	95
	Westmorland	83	74	78	63	47
Manchester & Cheshire	Bolton	89	65	48	37	43
	Bury	74	69	92	71	48
	Central Manchester	88	59	57	72	89
	Cumberland House	100	52	64	61	81
	Dawes Family Practice**	100	98	94	87	80
	Hope Hospital	100	90	59	73	64
	Leighton	82	84	85	75	88
	Macclesfield	87	65	63	65	44
	Monarch Medical Centre**	83	75	66	n/a	100
	North Manchester	96	92	82	59	71
	Oldham	100	98	97	99	92
	Palatine Centre**	94	100	97	100	100
	Rochdale	77	55	63	78	48
	Stepping Hill	91	64	50	21	25
	Tameside	100	100	97	97	97
	Trafford	73	42	70	55	49
	Wigan	75	68	51	26	50
Withington	51	61	47	46	84	
Wythenshawe	79	94	93	94	91	
Merseyside & Cheshire	Aintree	93	96	96	95	66
	Arrowe Park	98	100	98	97	96
	Chester	95	95	77	50	53
	Liverpool	97	92	85	100	99
	LWH	96	93	94	99	99
	Southport & Formby	69	82	75	47	39
	Southport & Ormskirk	91	88	82	81	50
	Warrington	88	93	82	66	53
Whiston	91	77	66	79	81	
Northern	Cumberland Infirmary	93	66	77	72	72
	West Cumberland				35	11

North West Regional
Average
** GP based practices

87

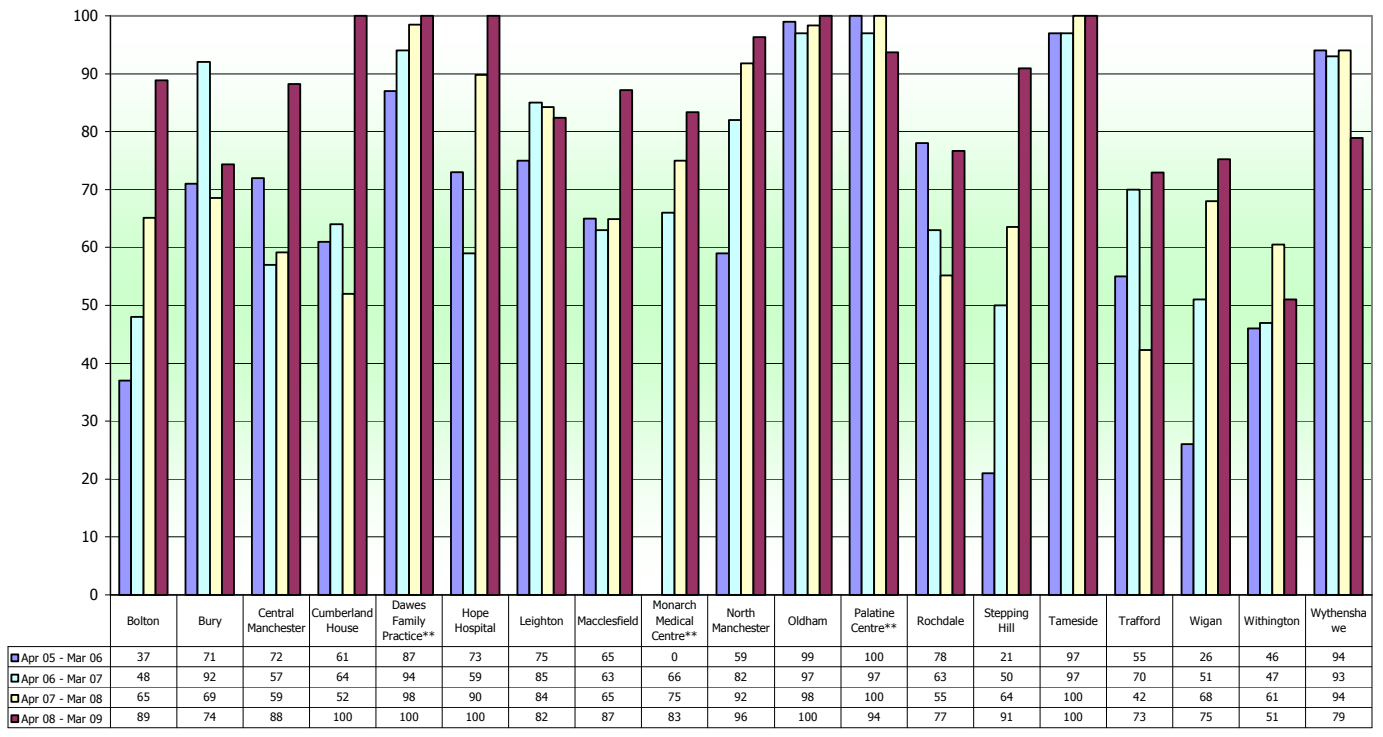
79

76

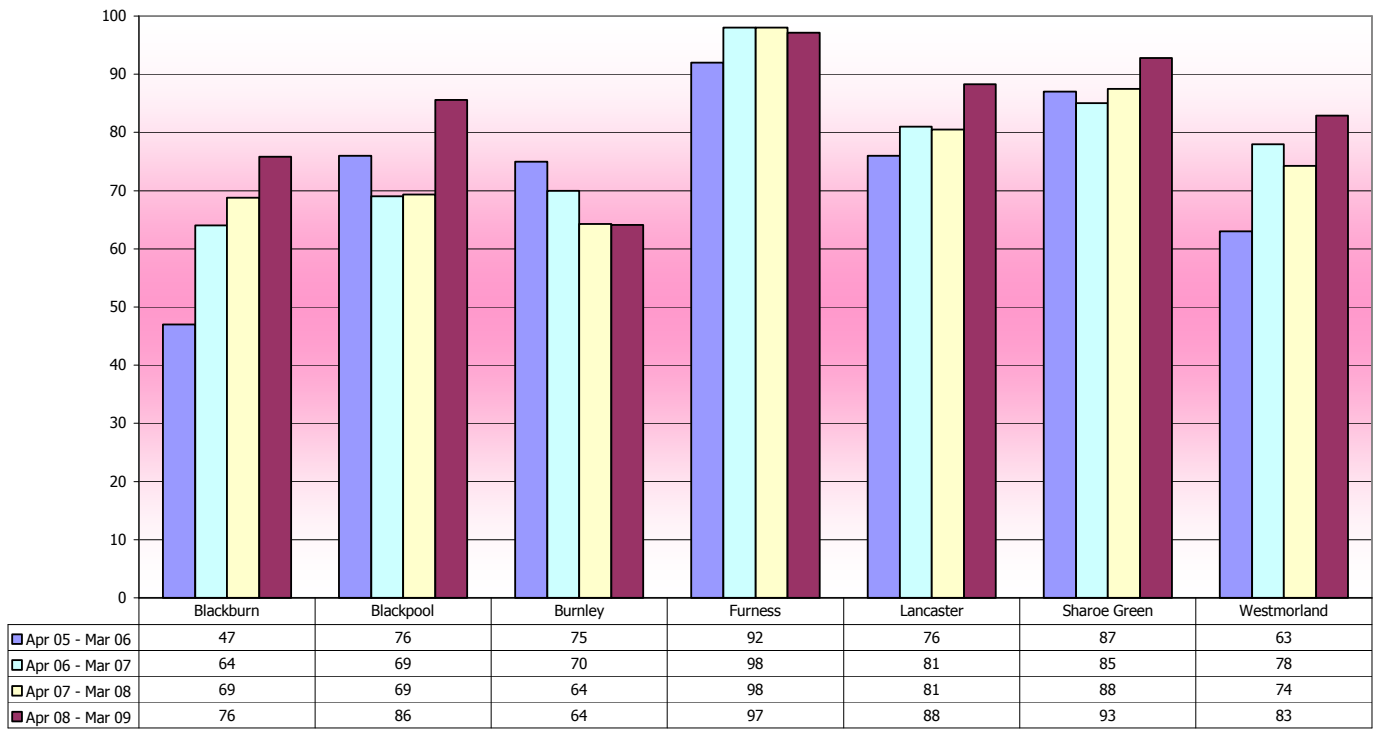
71

69

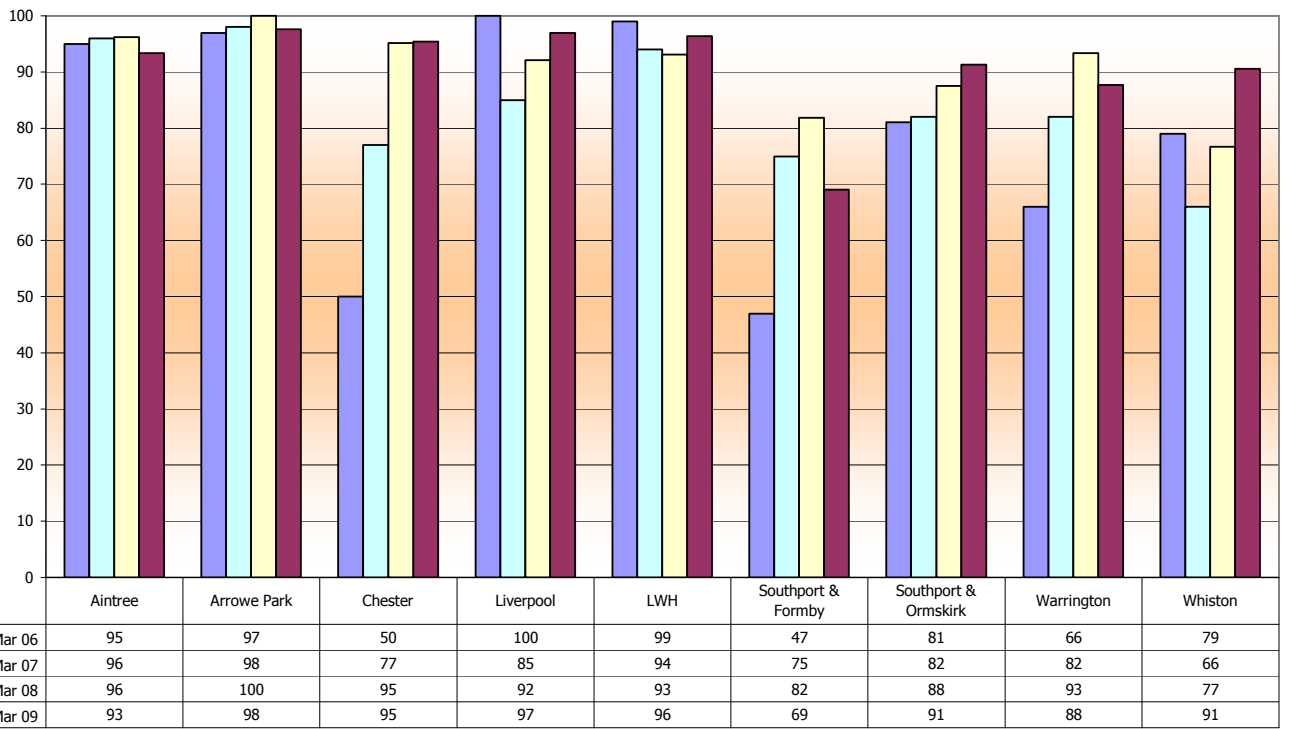
**Percentage of moderate/severe referrals seen within 4 weeks (standard 90%) 2005-06 to 2008-09
Greater Manchester & Cheshire Cancer Network**



**Percentage of moderate/severe referrals seen within 4 weeks (standard 90%) 2005-06 to 2008-09
Lancashire & South Cumbria Cancer Network**



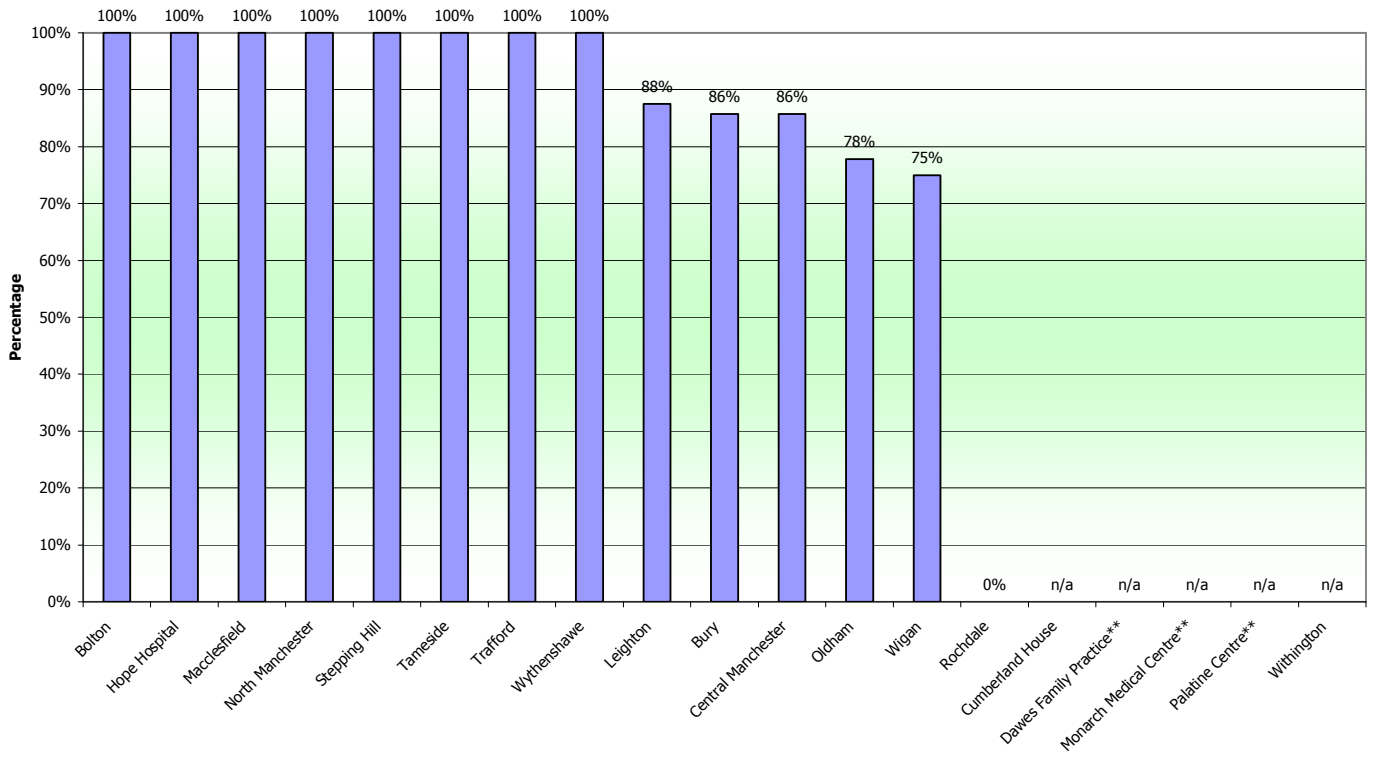
**Percentage of moderate/severe referrals seen within 4 weeks (standard 90%) 2005-06 to 2008-09
Merseyside & Cheshire Cancer Network**



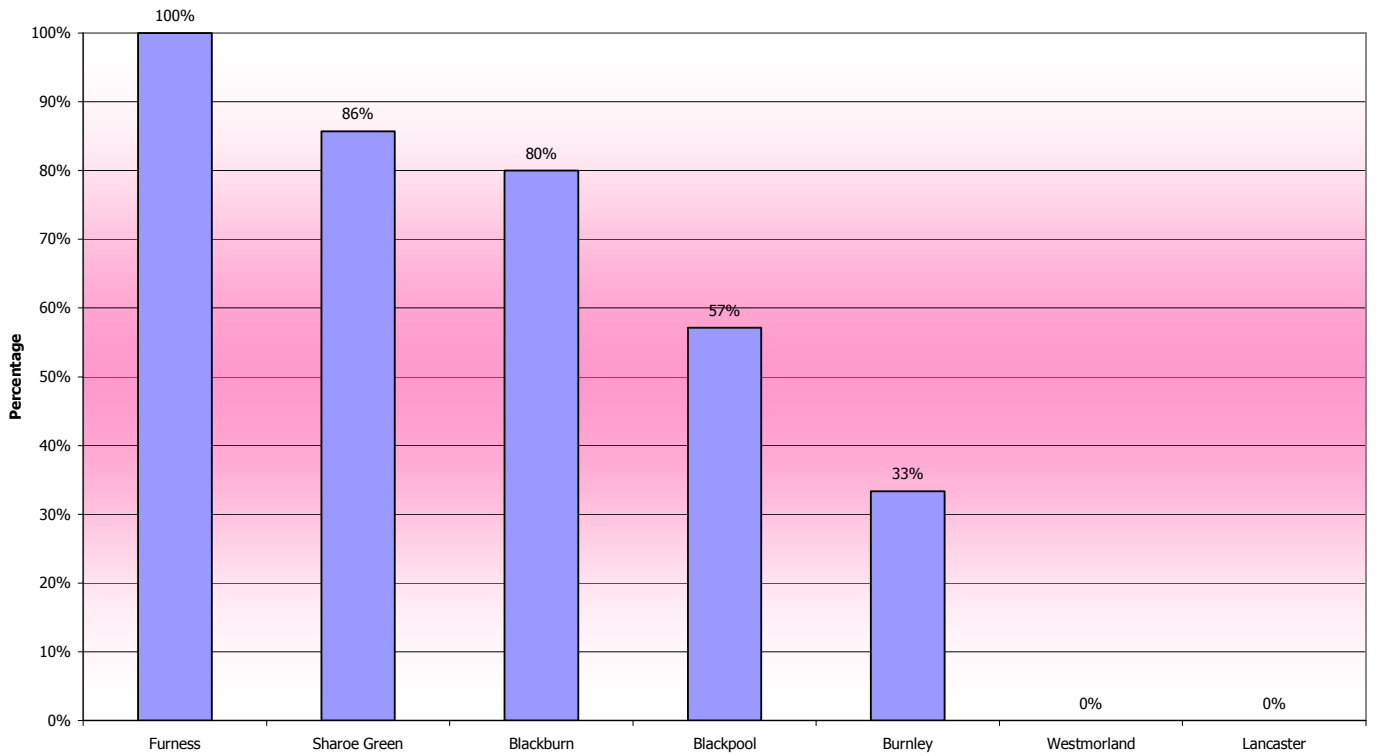
		within 2 weeks	Total	Percentage seen within 2 weeks (standard 90%)
Colposcopy unit by Cancer Network		Severe/? Invasive or Glandular neoplasia		Apr 08 - Mar 09
Lancs & S Cumbria	Furness	1	1	100%
	Sharoe Green	12	14	86%
	Blackburn	4	5	80%
	Blackpool	4	7	57%
	Burnley	2	6	33%
	Westmorland	0	1	0%
	Lancaster	0	0	n/a
Manchester & Cheshire	Bolton	5	5	100%
	Hope Hospital	3	3	100%
	Macclesfield	2	2	100%
	North Manchester	1	1	100%
	Stepping Hill	4	4	100%
	Tameside	15	15	100%
	Trafford	1	1	100%
	Wythenshawe	7	7	100%
	Leighton	7	8	88%
	Bury	6	7	86%
	Central Manchester	6	7	86%
	Oldham	7	9	78%
	Wigan	3	4	75%
	Rochdale	0	3	0%
	Cumberland House	0	0	n/a
	Dawes Family Practice**	0	0	n/a
	Monarch Medical Centre**	0	0	n/a
	Palatine Centre**	0	0	n/a
Withington	0	0	n/a	
Merseyside & Cheshire	Aintree	9	9	100%
	Arrowe Park	18	19	95%
	LWH	11	12	92%
	Chester	9	10	90%
	Whiston	8	10	80%
	Southport & Ormskirk	3	4	75%
	Warrington	10	14	71%
	Southport & Formby	1	2	50%
	Liverpool	0	0	n/a
Northern	Cumberland Infirmary	7	8	88%

** GP based practices

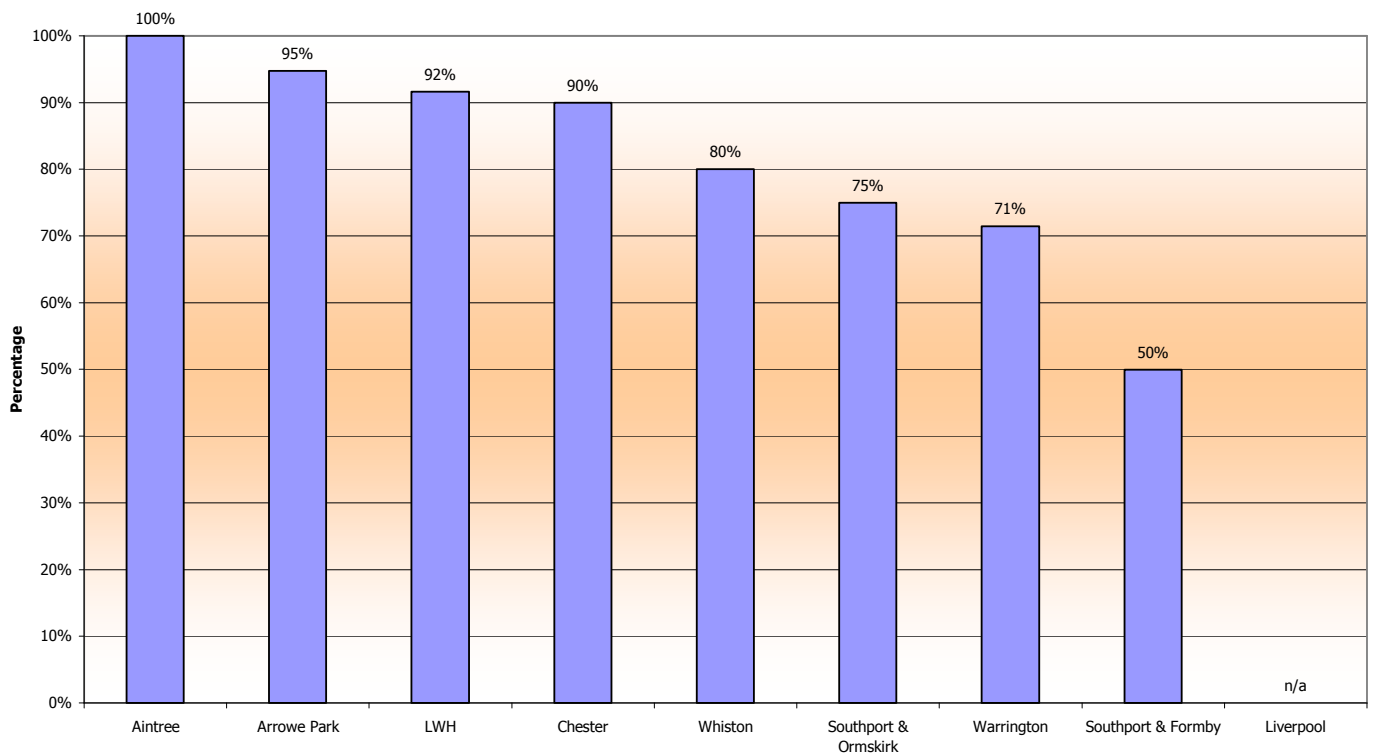
Percentage of all smears reported as possible invasive or glandular neoplasia seen within 2 weeks (standard 90%) for period Apr 08 - Mar 09
Greater Manchester & Cheshire Cancer Network



Percentage of all smears reported as possible invasive or glandular neoplasia seen within 2 weeks (standard 90%) for period Apr 08 - Mar 09
Lancashire & South Cumbria Cancer Network



Percentage of all smears reported as possible invasive or glandular neoplasia seen within 2 weeks (standard 90%) for period Apr 08 - Mar 09
Merseyside & Cheshire Cancer Network



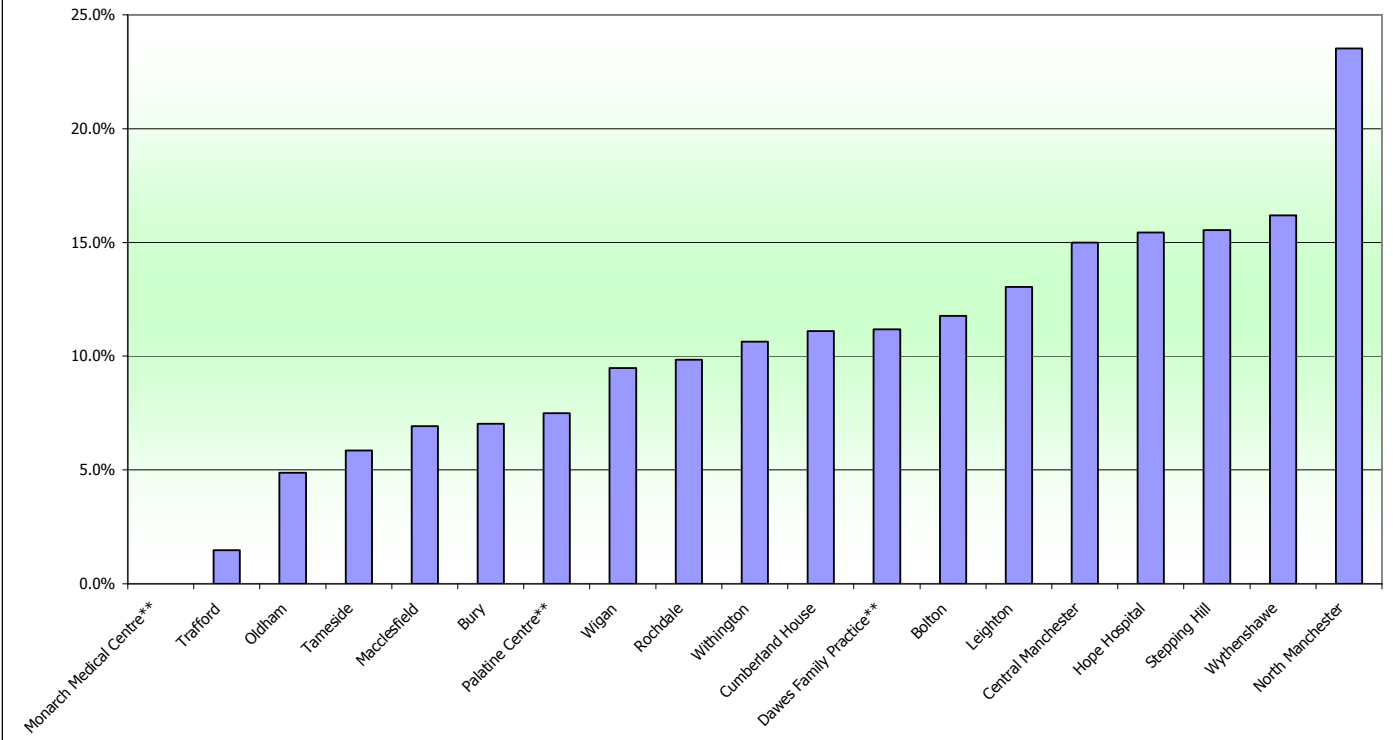
Colposcopy unit by Cancer Network		DNA %
		Apr 08 - Mar 09
Lancs & S Cumbria	Westmorland	6.7%
	Lancaster	9.3%
	Blackburn	9.5%
	Sharoe Green	9.8%
	Furness	9.8%
	Burnley	17.3%
	Blackpool	not supplied
	Manchester & Cheshire	Monarch Medical Centre**
Trafford		1.5%
Oldham		4.9%
Tameside		5.8%
Macclesfield		6.9%
Bury		7.0%
Palatine Centre**		7.5%
Wigan		9.5%
Rochdale		9.9%
Withington		10.6%
Cumberland House		11.1%
Dawes Family Practice**		11.2%
Bolton		11.8%
Leighton		13.1%
Central Manchester		15.0%
Hope Hospital		15.4%
Stepping Hill		15.5%
Wythenshawe	16.2%	
North Manchester	23.5%	
Merseyside & Cheshire	Southport & Formby	4.6%
	Aintree	5.0%
	Warrington	6.3%
	Southport & Ormskirk	9.6%
	Chester	10.7%
	LWH	11.2%
	Arrowe Park	11.3%
	Whiston	18.5%
	Liverpool	19.9%
Northern	Cumberland Infirmary	12.3%

NW Average

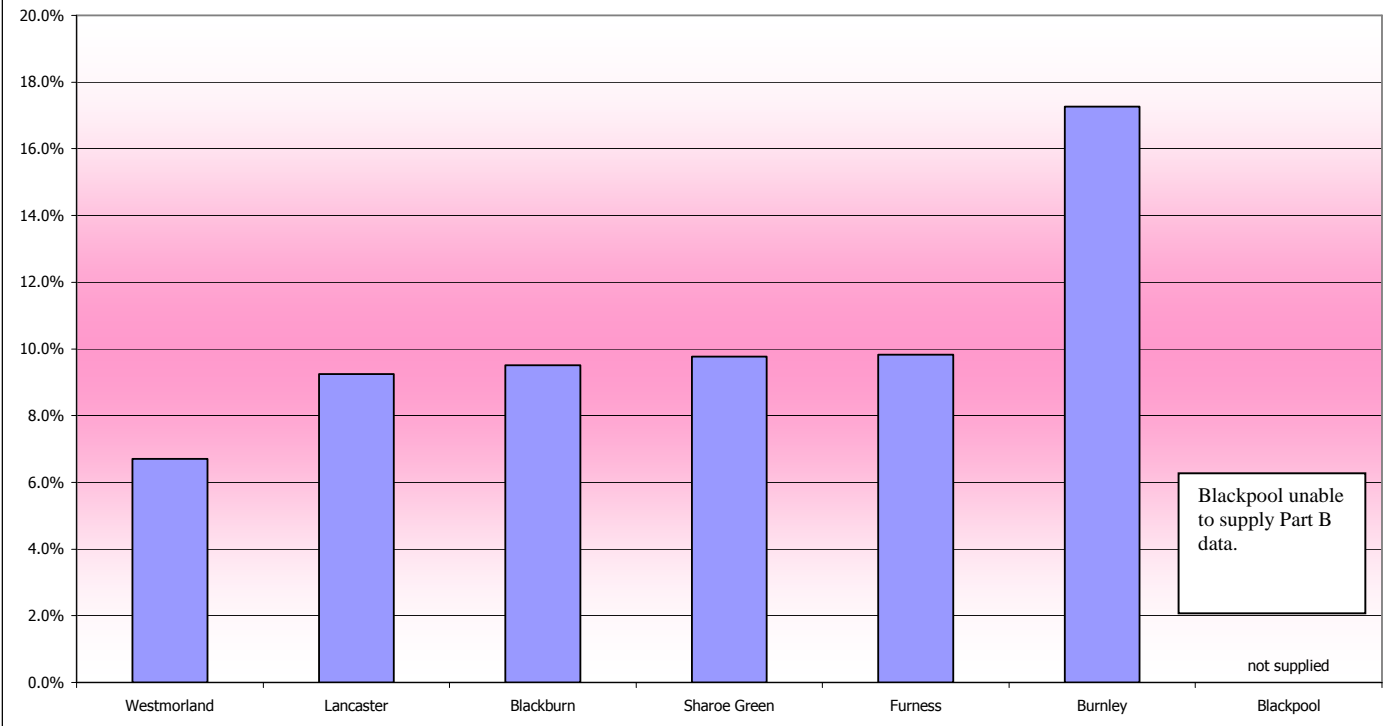
10.6%

** GP based practices

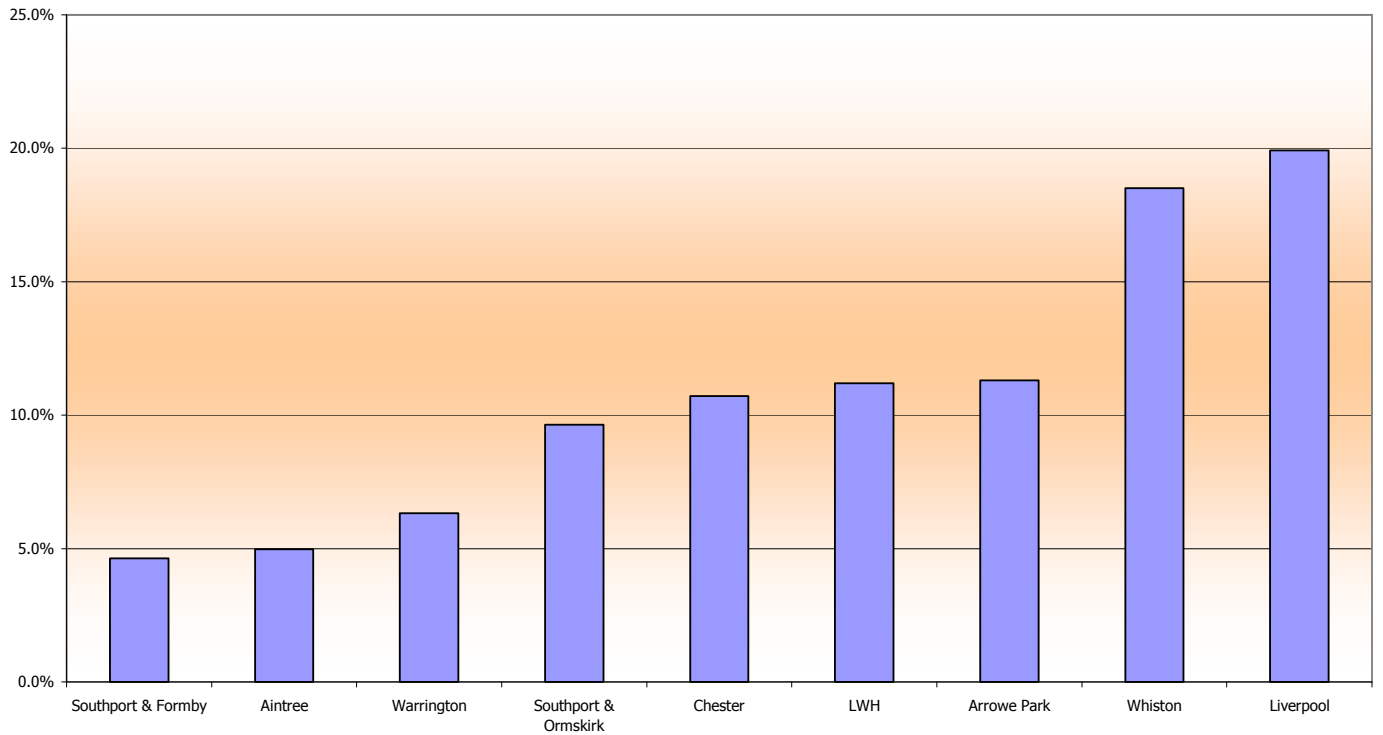
KC65 Part B - DNA % Apr 08 - Mar 09 (standard < 15%)
Greater Manchester & Cheshire Cancer Network



KC65 Part B - DNA % Apr 08 - Mar 09 (standard < 15%)
Lancashire & South Cumbria Cancer Network



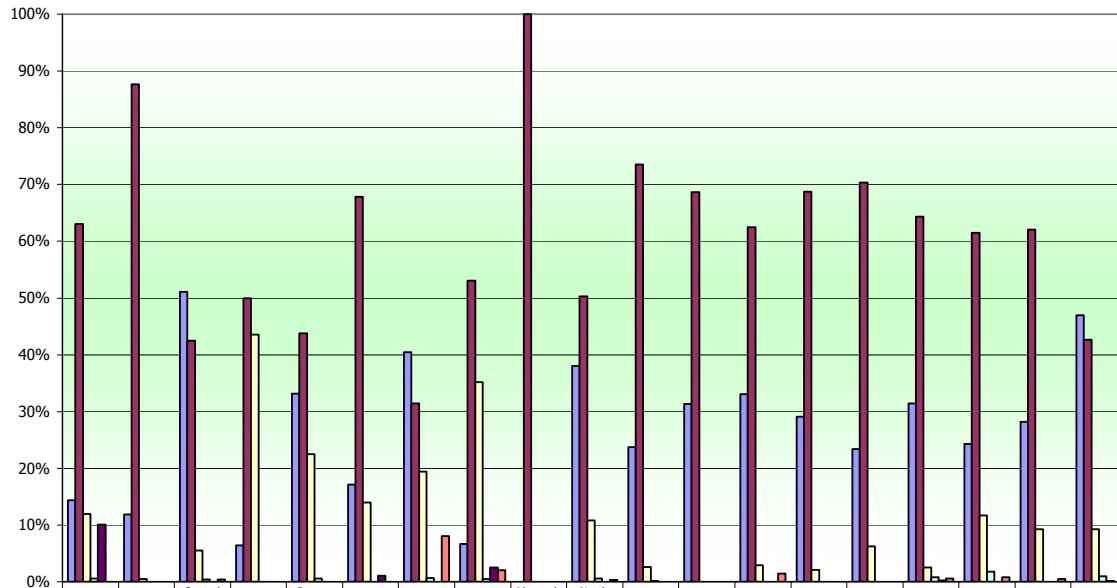
KC65 Part B - DNA % Apr 08 - Mar 09 (standard < 15%)
Merseyside & Cheshire Cancer Network



KC65 Part C1 First Attendance – type of procedure

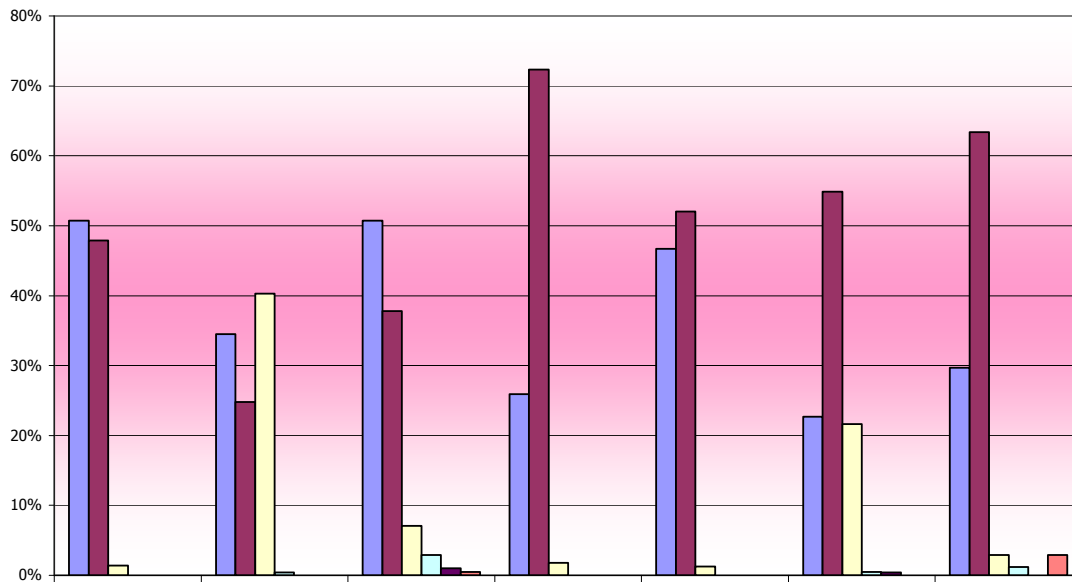
Colposcopy unit by Cancer Network		No Treatment	Diag	Excision	Ablation No biopsy	Ablation With biopsy	Other
Lancs & S Cumbria	Blackburn	51%	48%	1%	0%	0%	0%
	Blackpool	35%	25%	40%	0%	0%	0%
	Burnley	51%	38%	7%	3%	1%	0%
	Furness	26%	72%	2%	0%	0%	0%
	Lancaster	47%	52%	1%	0%	0%	0%
	Sharoe Green	23%	55%	22%	0%	0%	0%
	Westmorland	30%	63%	3%	1%	0%	3%
Manchester & Cheshire	Bolton	14%	63%	12%	1%	10%	0%
	Bury	12%	88%	1%	0%	0%	0%
	Central Manchester	51%	43%	6%	0%	0%	0%
	Cumberland House	6%	50%	44%	0%	0%	0%
	Dawes Family Practice**	33%	44%	22%	1%	0%	0%
	Hope Hospital	17%	68%	14%	0%	1%	0%
	Leighton	40%	31%	19%	1%	0%	8%
	Macclesfield	7%	53%	35%	1%	3%	2%
	Monarch Medical Centre**	0%	100%	0%	0%	0%	0%
	North Manchester	38%	50%	11%	1%	0%	0%
	Oldham	24%	74%	3%	0%	0%	0%
	Palatine Centre**	31%	69%	0%	0%	0%	0%
	Rochdale	33%	63%	3%	0%	0%	1%
	Stepping Hill	29%	69%	2%	0%	0%	0%
	Tameside	23%	70%	6%	0%	0%	0%
	Trafford	31%	64%	3%	1%	0%	1%
	Wigan	24%	61%	12%	2%	0%	1%
Withington	28%	62%	9%	0%	0%	1%	
Wythenshawe	47%	43%	9%	1%	0%	0%	
Merseyside & Cheshire	Aintree	63%	19%	14%	2%	0%	1%
	Arrowe Park	54%	28%	16%	1%	0%	1%
	Chester	33%	48%	19%	0%	0%	0%
	Liverpool	28%	53%	15%	0%	0%	4%
	LWH	64%	17%	11%	1%	1%	5%
	Southport & Formby	27%	73%	0%	0%	0%	0%
	Southport & Ormskirk	28%	71%	1%	1%	0%	0%
	Warrington	56%	38%	4%	1%	0%	0%
	Whiston	23%	66%	8%	0%	0%	3%
Northern	Cumberland Infirmary	18%	56%	26%	0%	0%	0%

KC65 Part C1 - First attendance - Type of procedure (%) 2008-2009
Greater Manchester & Cheshire Cancer Network



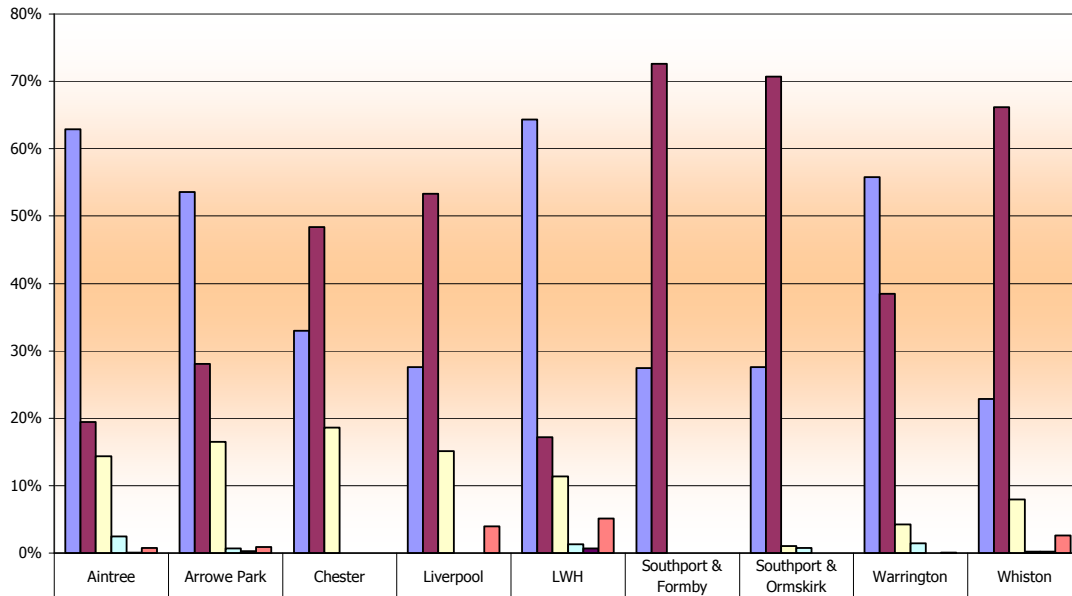
	Bolton	Bury	Central Manchester	Cumberland House	Daves Family Practice*	Hope Hospital	Leighton	Macclesfield	Monarch Medical Centre**	North Manchester	Oldham	Palatine Centre**	Rochdale	Stepping Hill	Tameside	Trafford	Wigan	Withington	Wythenshawe
No Treatment	14%	12%	51%	6%	33%	17%	40%	7%	0%	38%	24%	31%	33%	29%	23%	31%	24%	28%	47%
Diag	63%	88%	43%	50%	44%	68%	31%	53%	100%	50%	74%	69%	63%	69%	70%	64%	61%	62%	43%
Excision	12%	1%	6%	44%	22%	14%	19%	35%	0%	11%	3%	0%	3%	2%	6%	3%	12%	9%	9%
Ablation No biopsy	1%	0%	0%	0%	1%	0%	1%	1%	0%	1%	0%	0%	0%	0%	0%	1%	2%	0%	1%
Ablation With biopsy	10%	0%	0%	0%	0%	1%	0%	3%	0%	0%	0%	0%	0%	0%	0%	0%	0%	0%	0%
Other	0%	0%	0%	0%	0%	0%	8%	2%	0%	0%	0%	0%	1%	0%	0%	1%	1%	1%	0%

KC65 Part C1 - First attendance - Type of procedure (%) 2008-2009
Lancashire & South Cumbria Cancer Network



	Blackburn	Blackpool	Burnley	Furness	Lancaster	Sharoe Green	Westmorland
No Treatment	51%	35%	51%	26%	47%	23%	30%
Diag	48%	25%	38%	72%	52%	55%	63%
Excision	1%	40%	7%	2%	1%	22%	3%
Ablation No biopsy	0%	0%	3%	0%	0%	0%	1%
Ablation With biopsy	0%	0%	1%	0%	0%	0%	0%
Other	0%	0%	0%	0%	0%	0%	3%

KC65 Part C1 - First attendance - Type of procedure (%) 2008-2009
Merseyside & Cheshire Cancer Network

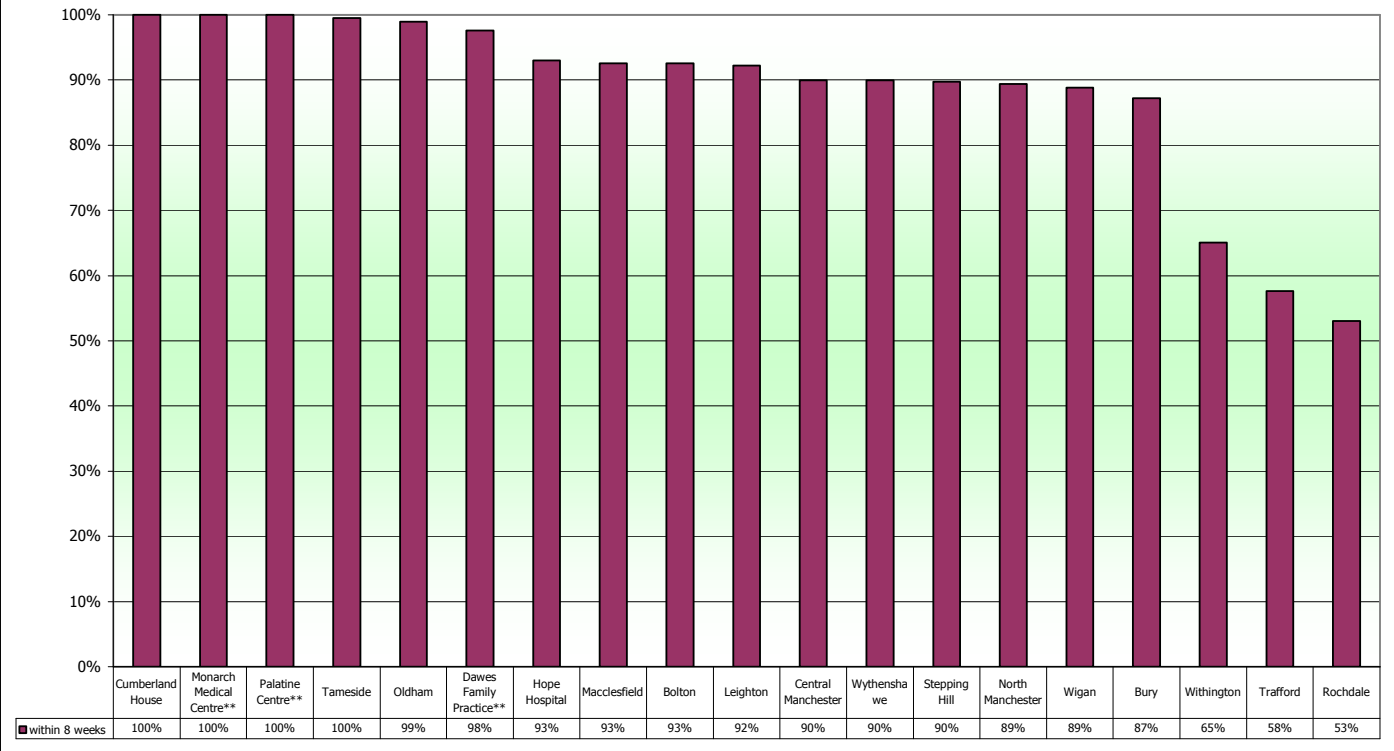


	Aintree	Arrowe Park	Chester	Liverpool	LWH	Southport & Formby	Southport & Ormskirk	Warrington	Whiston
No Treatment	63%	54%	33%	28%	64%	27%	28%	56%	23%
Diag	19%	28%	48%	53%	17%	73%	71%	38%	66%
Excision	14%	16%	19%	15%	11%	0%	1%	4%	8%
Ablation No biopsy	2%	1%	0%	0%	1%	0%	1%	1%	0%
Ablation With biopsy	0%	0%	0%	0%	1%	0%	0%	0%	0%
Other	1%	1%	0%	4%	5%	0%	0%	0%	3%

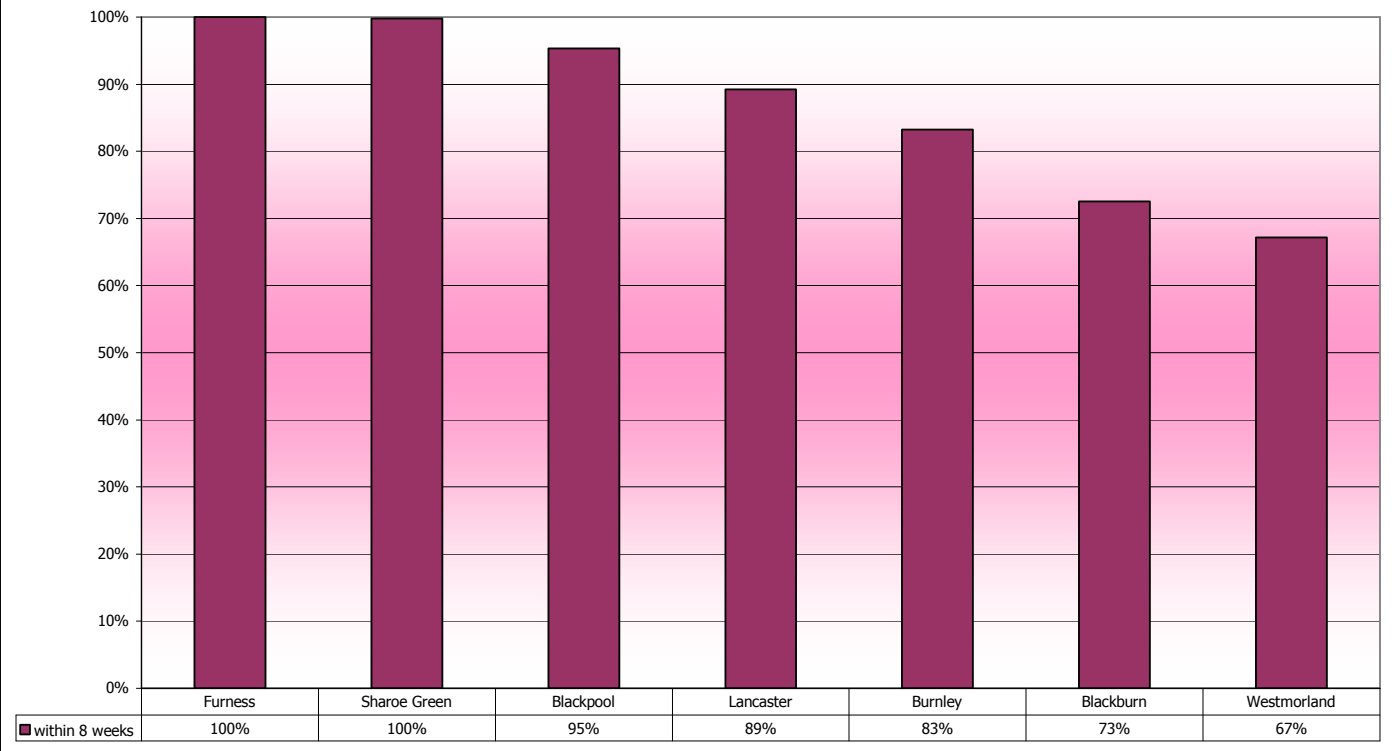
KC65 Part D Time from biopsy to informing patient (1st month of each quarter). Standard 100% within 8 weeks.

Colposcopy unit by Cancer Network		within 8 weeks
Lancs & S Cumbria	Furness	100%
	Sharoe Green	100%
	Blackpool	95%
	Lancaster	89%
	Burnley	83%
	Blackburn	73%
	Westmorland	67%
Manchester & Cheshire	Cumberland House	100%
	Monarch Medical Centre**	100%
	Palatine Centre**	100%
	Tameside	100%
	Oldham	99%
	Dawes Family Practice**	98%
	Hope Hospital	93%
	Macclesfield	93%
	Bolton	93%
	Leighton	92%
	Central Manchester	90%
	Wythenshawe	90%
	Stepping Hill	90%
	North Manchester	89%
	Wigan	89%
	Bury	87%
Withington	65%	
Trafford	58%	
Rochdale	53%	
Merseyside & Cheshire	Aintree	100%
	Chester	100%
	Southport & Ormskirk	100%
	LWH	99%
	Southport & Formby	99%
	Arrowe Park	96%
	Warrington	94%
	Liverpool	92%
	Whiston	90%
Northern	Cumberland Infirmary	92%

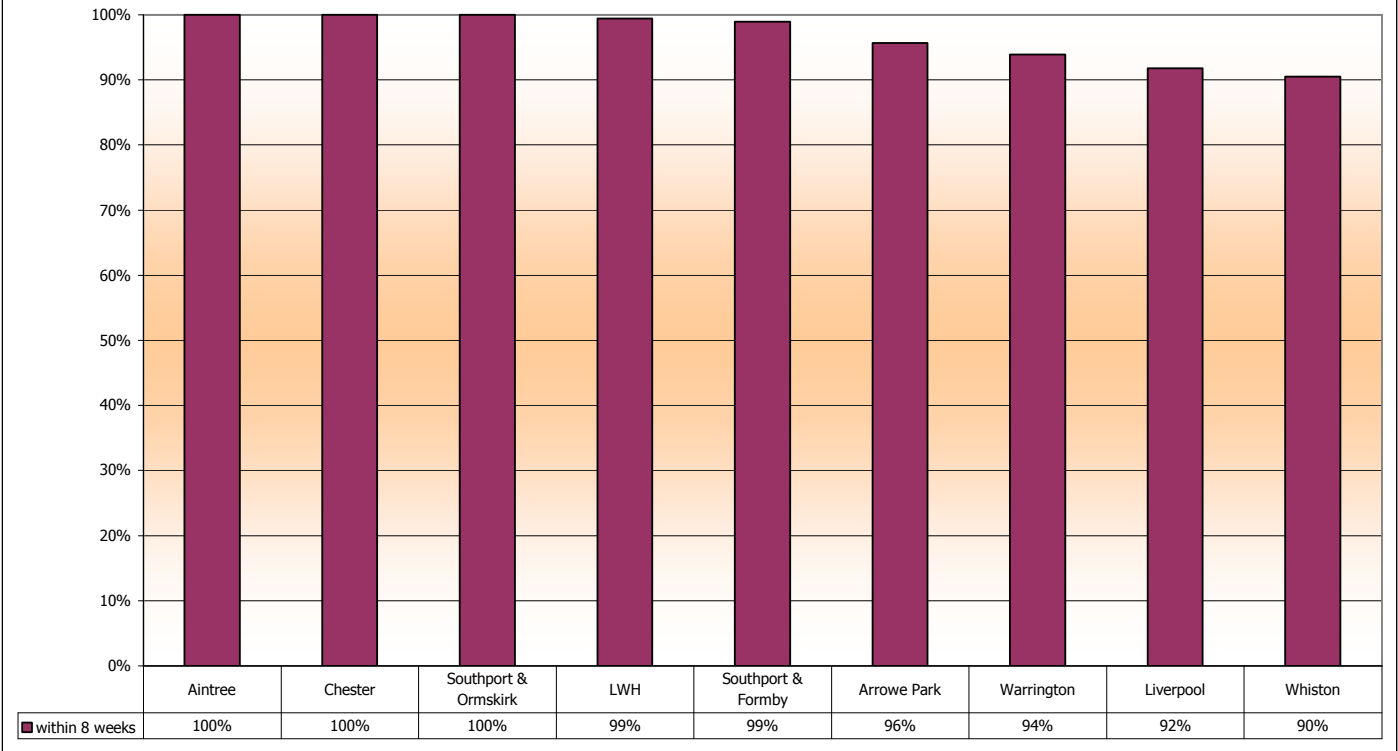
**KC65 Part D - Time from biopsy to informing patient (1st month of each quarter) Standard 100% within 8 weeks
Greater Manchester & Cheshire Cancer Network**



**KC65 Part D - Time from biopsy to informing patient (1st month of each quarter) Standard 100% within 8 weeks
Lancashire & South Cumbria Cancer Network**



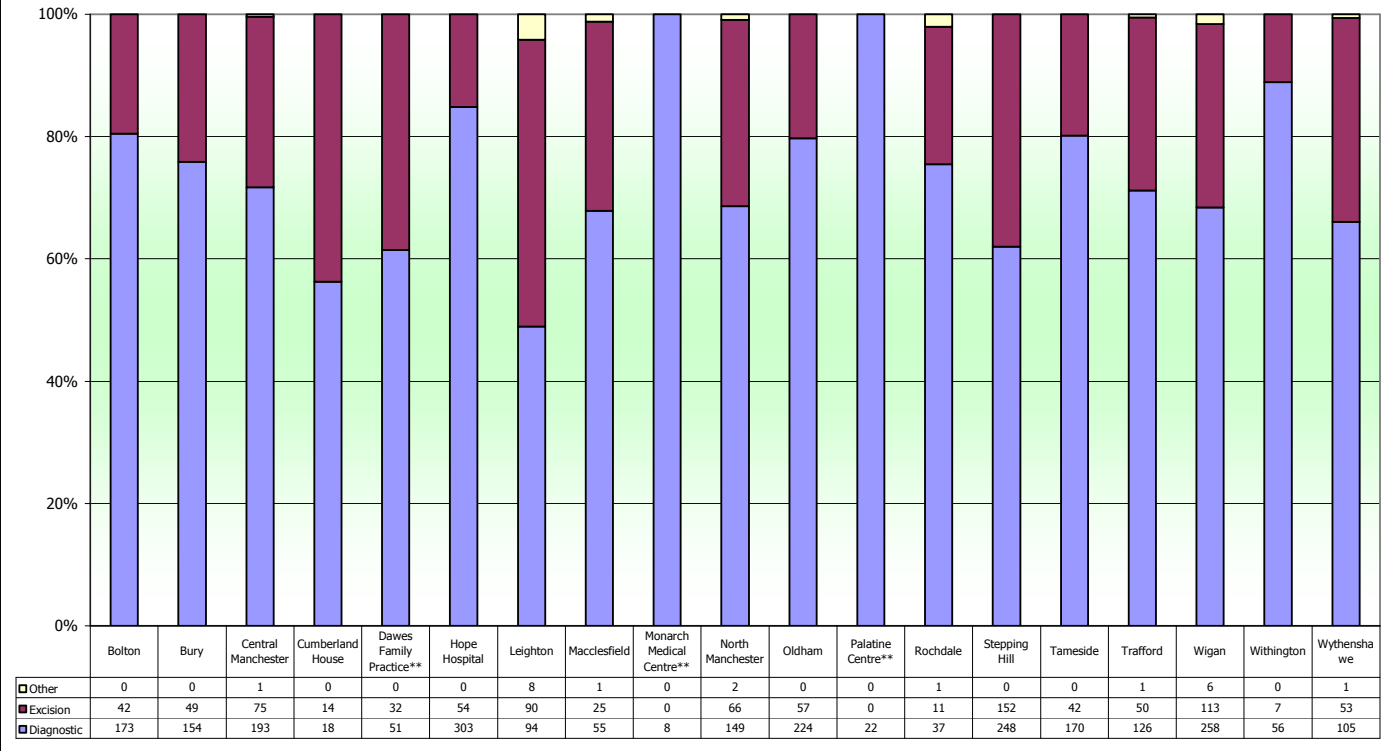
**KC65 Part D - Time from biopsy to informing patient (1st month of each quarter) Standard 100% within 8 weeks
Merseyside & Cheshire Cancer Network**



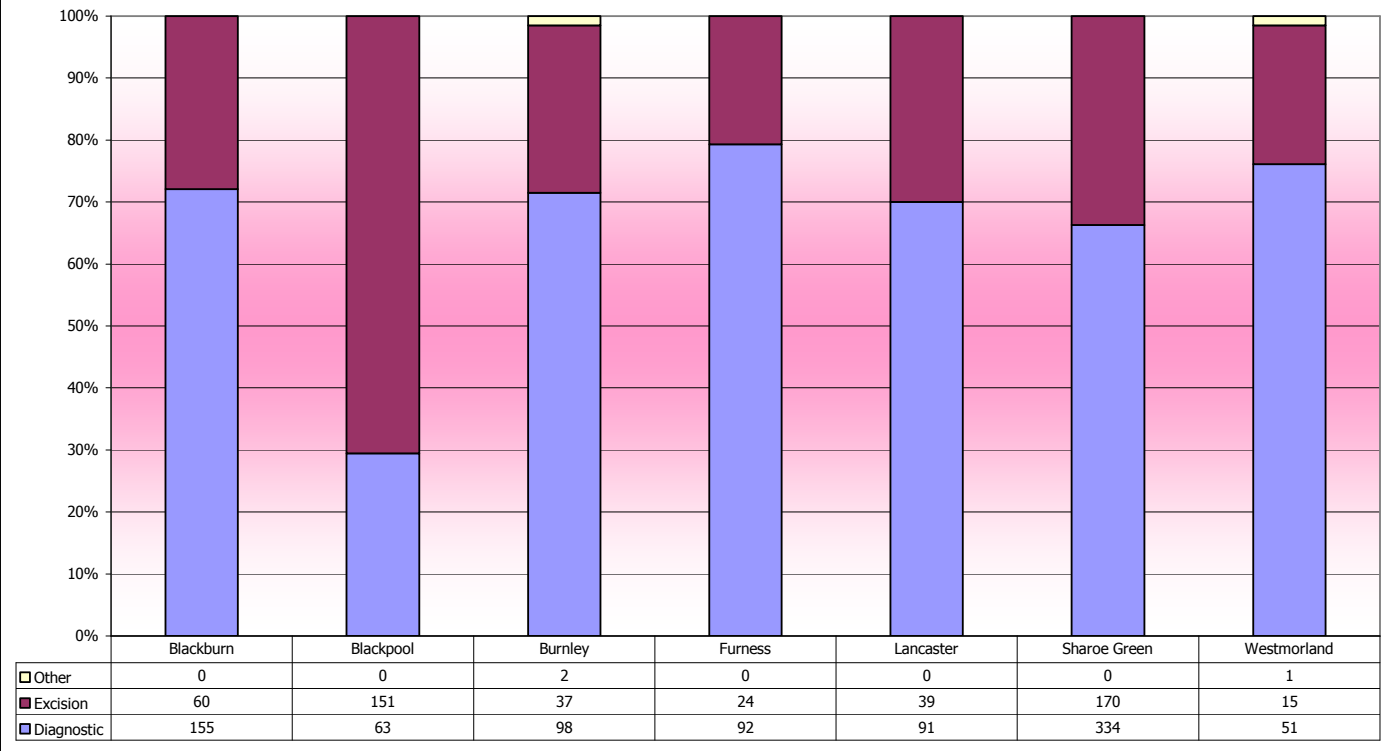
KC65 Part E All outcomes by biopsy time 1st month of each quarter

Colposcopy unit by Cancer Network		Diagnostic	Excision	Other
Lancs & S Cumbria	Blackburn	155	60	0
	Blackpool	63	151	0
	Burnley	98	37	2
	Furness	92	24	0
	Lancaster	91	39	0
	Sharoe Green	334	170	0
	Westmorland	51	15	1
Manchester & Cheshire	Bolton	173	42	0
	Bury	154	49	0
	Central Manchester	193	75	1
	Cumberland House	18	14	0
	Dawes Family Practice**	51	32	0
	Hope Hospital	303	54	0
	Leighton	94	90	8
	Macclesfield	55	25	1
	Monarch Medical Centre**	8	0	0
	North Manchester	149	66	2
	Oldham	224	57	0
	Palatine Centre**	22	0	0
	Rochdale	37	11	1
	Stepping Hill	248	152	0
	Tameside	170	42	0
	Trafford	126	50	1
	Wigan	258	113	6
Withington	56	7	0	
Wythenshawe	105	53	1	
Merseyside & Cheshire	Aintree	118	128	9
	Arrowe Park	82	58	0
	Chester	156	97	2
	Liverpool	91	55	0
	LWH	153	152	35
	Southport & Formby	75	19	0
	Southport & Ormskirk	125	26	0
	Warrington	248	63	0
	Whiston	268	76	13
Northern	Cumberland Infirmary	207	85	3

**KC65 Part E All outcomes by biopsy type 1st month of each quarter
Greater Manchester & Cheshire Cancer Network**



**KC65 Part E All outcomes by biopsy type 1st month of each quarter
Lancashire & South Cumbria Cancer Network**



KC65 Part E All outcomes by biopsy type 1st month of each quarter
Merseyside & Cheshire Cancer Network

