



INFORMATION SUMMARY

BY CANCER NETWORK

1 Apr 09 to 31 Mar 10

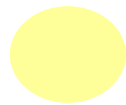
Produced by
North West Cervical Screening
Quality Assurance Reference Centre
Liverpool Women's Hospital
Crown Street Liverpool L8 7SS
www.nwcsqarc.org.uk



CANCER NETWORK KEY



Northern Cancer Network



Lancashire & South Cumbria Cancer Network



Greater Manchester & Cheshire Cancer Network



Merseyside & Cheshire Cancer Network

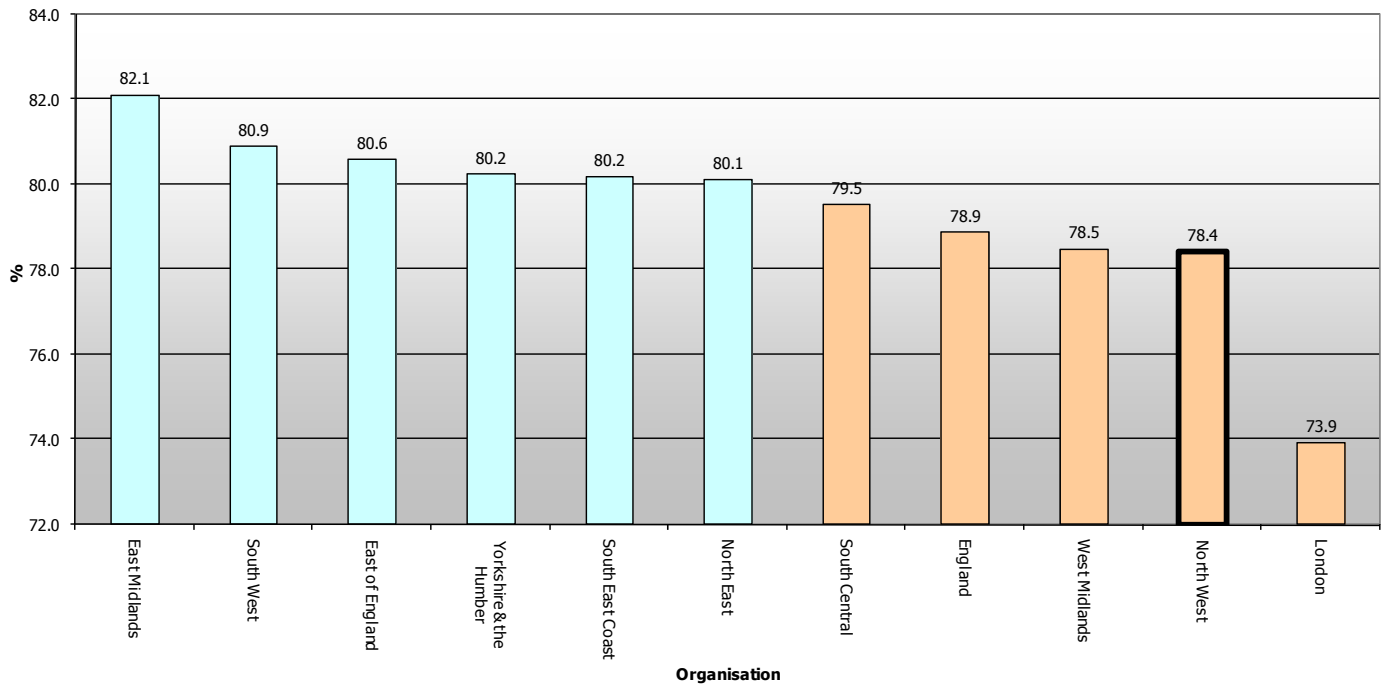
Cervical Screening Programme: coverage of the Target Age Group (25-64) by Primary Care Organisation, 2005-06 to 2009-10.

| Cancer Network | KC53 Data for Target Screening Age 25-64 (ranked in order of coverage for 2008-2009) | Coverage 2009-2010 | Coverage 2008-2009 | Coverage 2007-2008 | Coverage 2006-2007 | Coverage 2005-2006 |
|-------------------------------|--|--------------------|--------------------|--------------------|--------------------|--------------------|
| Greater Manchester & Cheshire | Stockport | 81.6 | 81.8 | 81 | 81.3 | 81.5 |
| Greater Manchester & Cheshire | Central & Eastern Cheshire | 81.6 | 82.2 | 82.3 | 83.2 | 83.6 |
| Greater Manchester & Cheshire | Trafford | 80.8 | 80.7 | 80.4 | 80.8 | 80.9 |
| Greater Manchester & Cheshire | Bury | 80.8 | 81.0 | 81.3 | 82.0 | 82.4 |
| Greater Manchester & Cheshire | Ashton, Leigh and Wigan | 80.5 | 80.3 | 80 | 80.7 | 81.1 |
| Greater Manchester & Cheshire | Tameside and Glossop | 79.2 | 79.6 | 79.3 | 80.3 | 81.1 |
| Greater Manchester & Cheshire | Bolton | 79.2 | 79.6 | 79.4 | 80.6 | 81.1 |
| Greater Manchester & Cheshire | Oldham | 78.7 | 79.0 | 79.1 | 80.2 | 80.7 |
| Greater Manchester & Cheshire | Heywood and Middleton & Rochdale | 77.7 | 77.8 | 77.9 | 79.3 | 80.0 |
| Greater Manchester & Cheshire | Salford | 77.4 | 77.2 | 77.2 | 77.9 | 78.3 |
| Greater Manchester & Cheshire | Manchester | 73.3 | 73.5 | 73.3 | 74.0 | 74.4 |
| Lancashire & South Cumbria | North Lancashire | 79.4 | 79.1 | 78.5 | 79.2 | |
| Lancashire & South Cumbria | Central Lancashire | 78.7 | 78.8 | 78.6 | 79.6 | |
| Lancashire & South Cumbria | East Lancashire | 78.7 | 78.8 | 79 | 80.0 | |
| Lancashire & South Cumbria | Blackpool | 75.5 | 75.2 | 74.1 | 75.0 | 75.3 |
| Lancashire & South Cumbria | Blackburn With Darwen | 74.8 | 75.3 | 76 | 77.3 | 77.9 |
| Merseyside & Cheshire | Warrington | 81.3 | 82.2 | 82 | 82.9 | 82.8 |
| Merseyside & Cheshire | Western Cheshire | 81.1 | 81.4 | 80.9 | 81.6 | 81.8 |
| Merseyside & Cheshire | Halton & St Helens | 78.5 | 78.9 | 78.8 | 79.4 | 79.5 |
| Merseyside & Cheshire | Wirral | 77.9 | 77.8 | 77.2 | 77.9 | 78.3 |
| Merseyside & Cheshire | Knowsley | 76.8 | 75.7 | 74 | 74.5 | 74.8 |
| Merseyside & Cheshire | Sefton | 74.6 | 74.6 | 73.9 | 74.4 | 74.6 |
| Merseyside & Cheshire | Liverpool | 72.8 | 71.9 | 71.6 | 72.3 | 72.8 |
| Northern | Cumbria | 81.8 | 81.9 | 81.7 | 82.0 | |

Source Cervical Screening Programme, England:2009-10: Table 13 © 2010, The Health and Social Care Information Centre

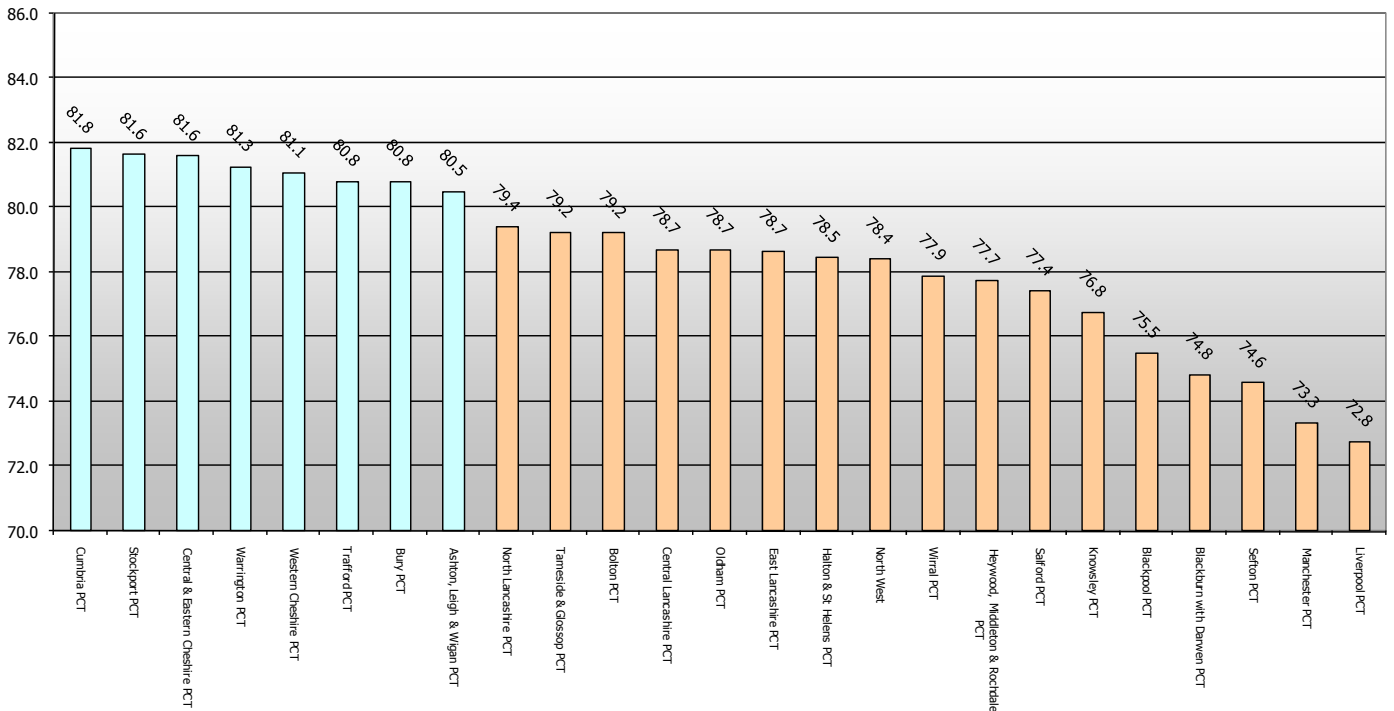
Cervical screening programme: coverage (less than 5 years since last adequate test) of the Target Age Group (25-64) by SHA 2009-10

sources: KC53 Parts A2 and A3; Cervical Screening Programme 2009-10 The Information Centre

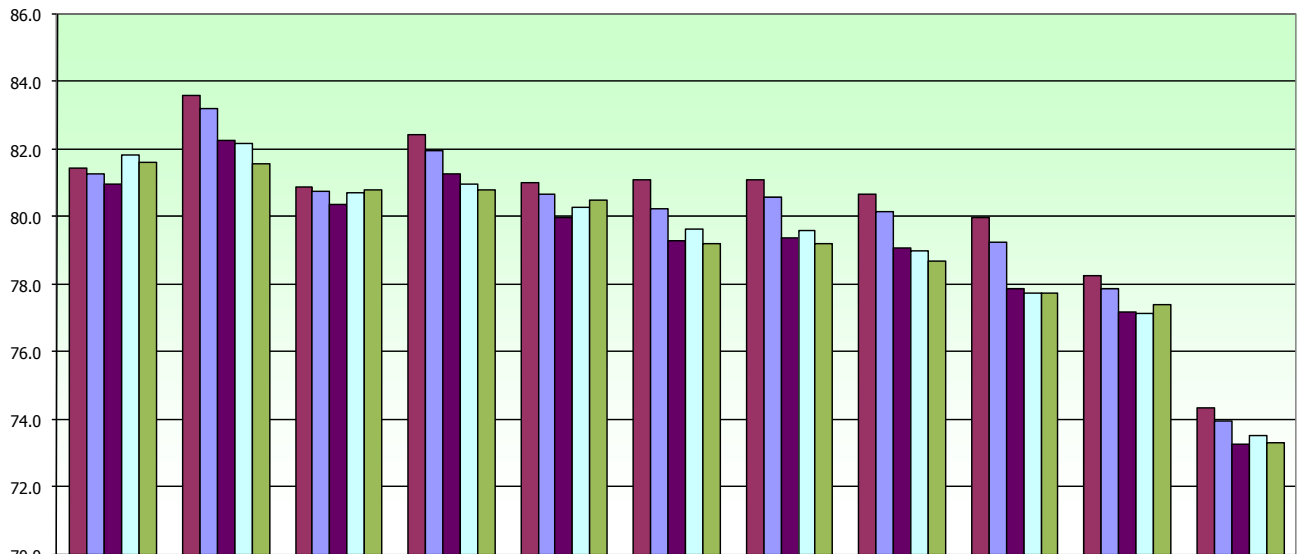


Cervical screening programme: coverage (less than 5 years since last adequate test) of the Target Age Group (25-64) by PCT 2009-10

Sources: KC53 Parts A2 and A3; Cervical Screening Programme 2009-09 The Information Centre

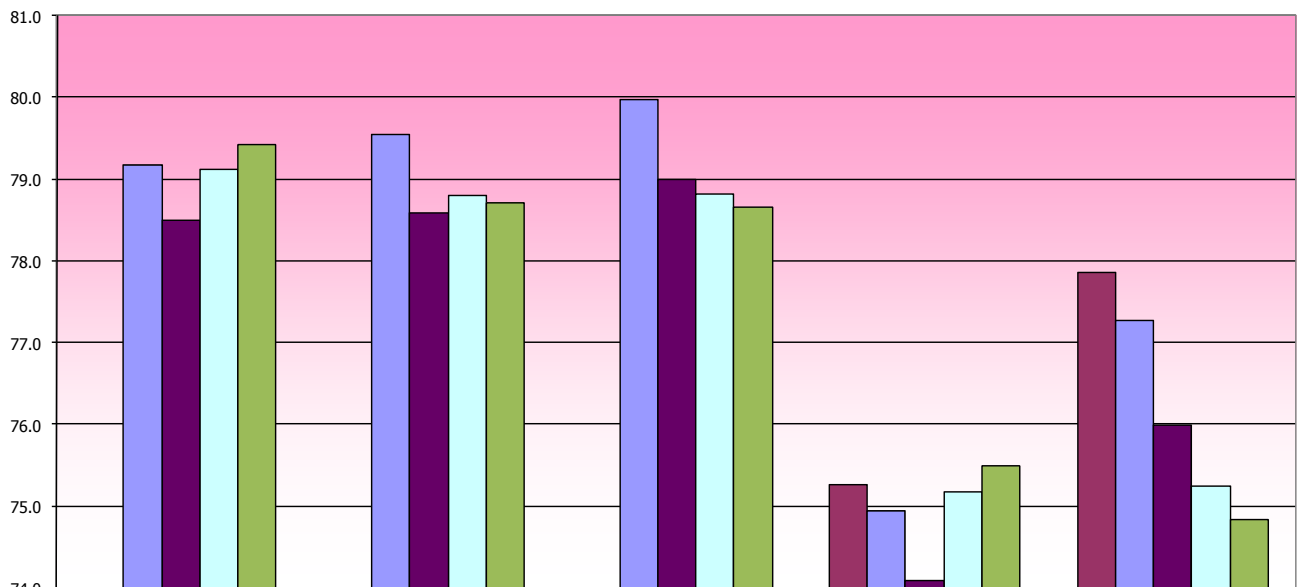


% Coverage (less than 5 years since adequate test) for the period 2005-2010 for target group 25-64 for Greater Manchester & Cheshire Cancer Network. Target 80%.



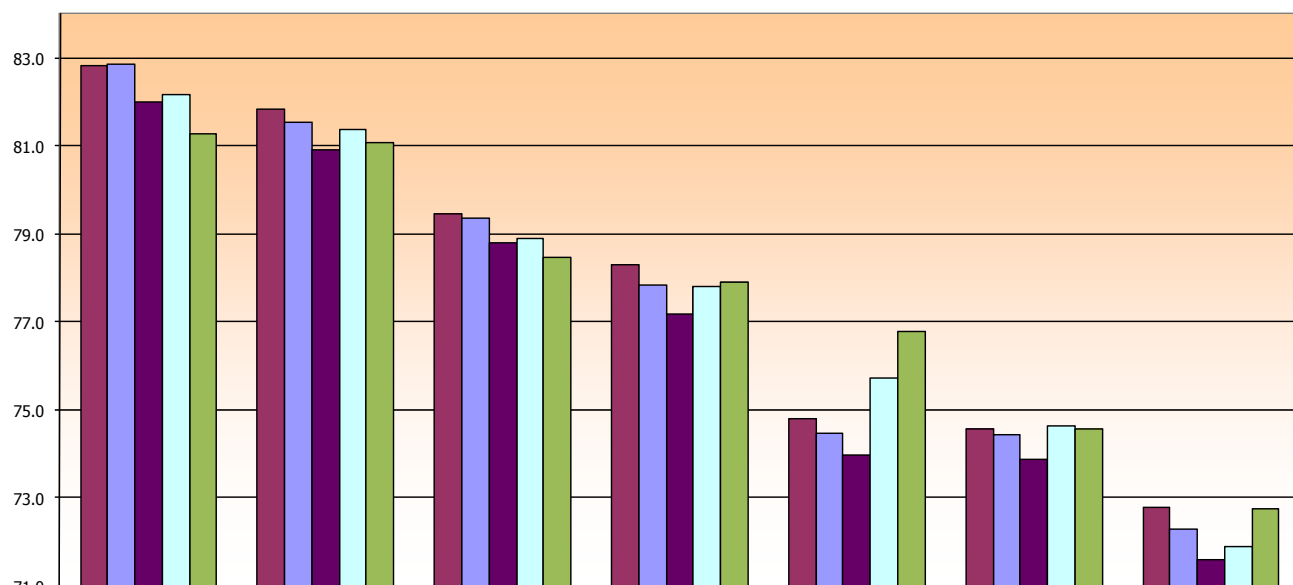
| | Stockport | Central & Eastern Cheshire | Trafford | Bury | Ashton, Leigh and Wigan | Tameside and Glossop | Bolton | Oldham | Heywood and Middleton & Rochdale | Salford | Manchester |
|----------------------|-----------|----------------------------|----------|------|-------------------------|----------------------|--------|--------|----------------------------------|---------|------------|
| ■ Coverage 2005-2006 | 81.5 | 83.6 | 80.9 | 82.4 | 81.1 | 81.1 | 81.1 | 80.7 | 80.0 | 78.3 | 74.4 |
| ■ Coverage 2006-2007 | 81.3 | 83.2 | 80.8 | 82.0 | 80.7 | 80.3 | 80.6 | 80.2 | 79.3 | 77.9 | 74.0 |
| ■ Coverage 2007-2008 | 81 | 82.3 | 80.4 | 81.3 | 80 | 79.3 | 79.4 | 79.1 | 77.9 | 77.2 | 73.3 |
| ■ Coverage 2008-2009 | 81.8 | 82.2 | 80.7 | 81.0 | 80.3 | 79.6 | 79.6 | 79.0 | 77.8 | 77.2 | 73.5 |
| ■ Coverage 2009-2010 | 81.6 | 81.6 | 80.8 | 80.8 | 80.5 | 79.2 | 79.2 | 78.7 | 77.7 | 77.4 | 73.3 |

% Coverage (less than 5 years since adequate test) for the period 2005-2010 for target group 25-64 for Lancashire & South Cumbria Cancer Network. Target 80%.



| | North Lancashire | Central Lancashire | East Lancashire | Blackpool | Blackburn With Darwen |
|----------------------|------------------|--------------------|-----------------|-----------|-----------------------|
| ■ Coverage 2005-2006 | | | | 75.3 | 77.9 |
| ■ Coverage 2006-2007 | 79.2 | 79.6 | 80.0 | 75.0 | 77.3 |
| ■ Coverage 2007-2008 | 78.5 | 78.6 | 79 | 74.1 | 76 |
| ■ Coverage 2008-2009 | 79.1 | 78.8 | 78.8 | 75.2 | 75.3 |
| ■ Coverage 2009-2010 | 79.4 | 78.7 | 78.7 | 75.5 | 74.8 |

% Coverage (less than 5 years since adequate test) for the period 2005-2010 for target group 25-64 for Merseyside & Cheshire Cancer Network. Target 80%.



| | Warrington | Western Cheshire | Halton & St Helens | Wirral | Knowsley | Sefton | Liverpool |
|----------------------|------------|------------------|--------------------|--------|----------|--------|-----------|
| ■ Coverage 2005-2006 | 82.8 | 81.8 | 79.5 | 78.3 | 74.8 | 74.6 | 72.8 |
| ■ Coverage 2006-2007 | 82.9 | 81.6 | 79.4 | 77.9 | 74.5 | 74.4 | 72.3 |
| ■ Coverage 2007-2008 | 82 | 80.9 | 78.8 | 77.2 | 74 | 73.9 | 71.6 |
| ■ Coverage 2008-2009 | 82.2 | 81.4 | 78.9 | 77.8 | 75.7 | 74.6 | 71.9 |
| ■ Coverage 2009-2010 | 81.3 | 81.1 | 78.5 | 77.9 | 76.8 | 74.6 | 72.8 |

Measuring laboratory performance in the North West

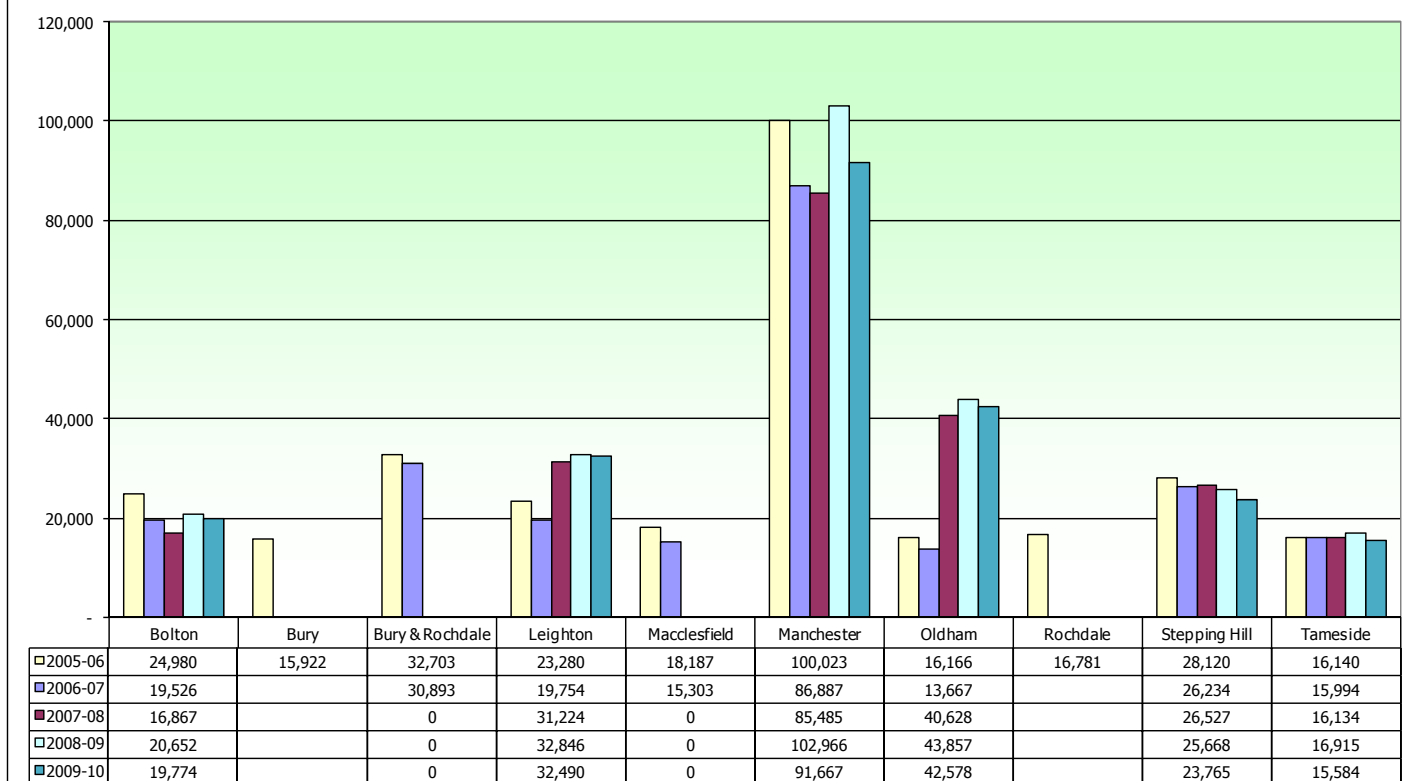
2005-06 to 2009-10

Workload

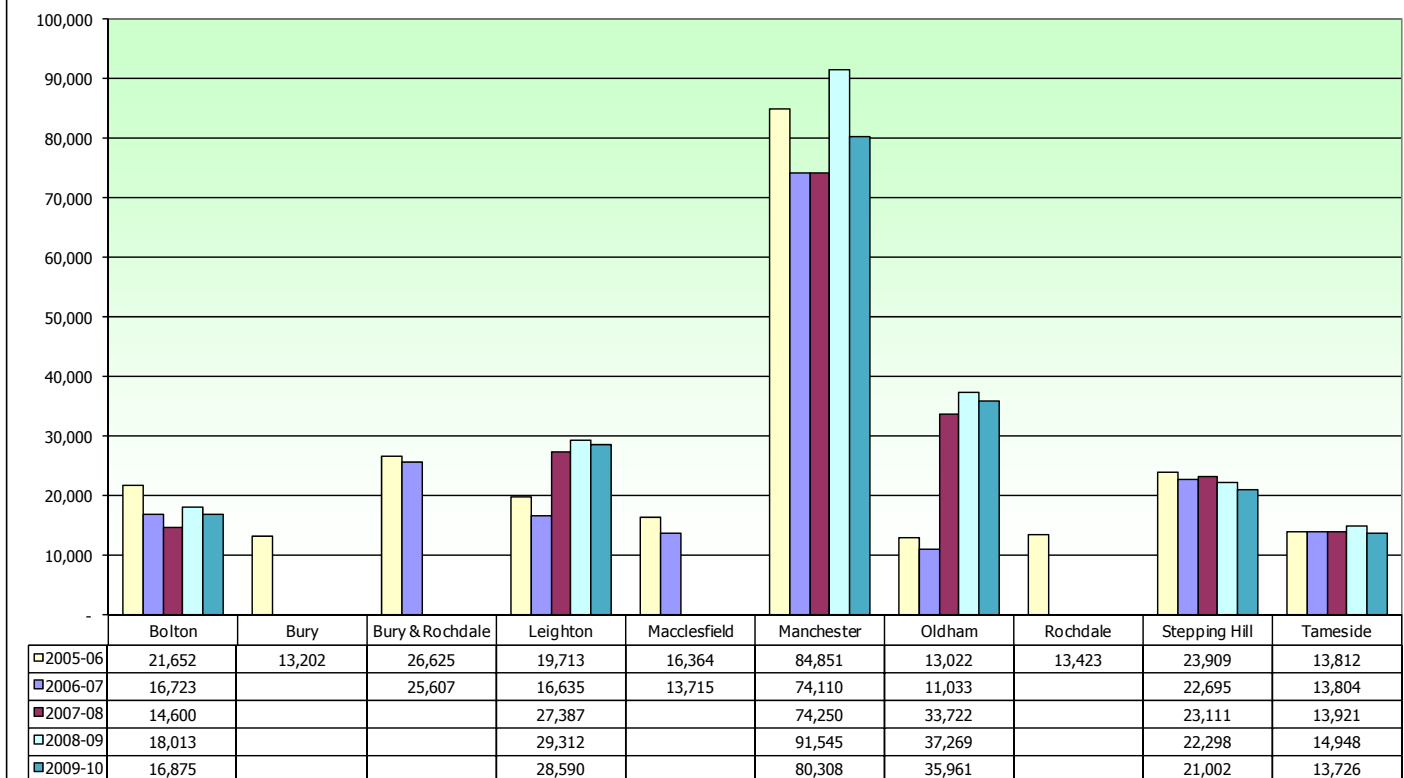
| Laboratory by Cancer Network | | Workload - Smears examined | | | | | | | | | |
|------------------------------|-----------------|----------------------------|---------------------|-----------------------|---------------------|-----------------------|---------------------|-----------------------|---------------------|-----------------------|---------------------|
| | | 2009-10 | | 2008-09 | | 2007-08 | | 2006-07 | | 2005-06 | |
| | | All sources, all ages | GP & NHS CC (25-64) | All sources, all ages | GP & NHS CC (25-64) | All sources, all ages | GP & NHS CC (25-64) | All sources, all ages | GP & NHS CC (25-64) | All sources, all ages | GP & NHS CC (25-64) |
| Lancs & Cumbria | Blackpool | 21,794 | 18,701 | 26,633 | 23,658 | 21,837 | 18,988 | 20,436 | 17,433 | 21,598 | 18,193 |
| | Chorley | 24,288 | 21,469 | 26,267 | 23,274 | 22,166 | 18,998 | 23,399 | 19,783 | 25,535 | 21,872 |
| | East Lancashire | 35,276 | 31,140 | 32,427 | 28,631 | 32,897 | 28,649 | 34,787 | 30,194 | 37,805 | 32,652 |
| | Lancaster | 19,169 | 16,763 | 23,089 | 20,908 | 18,206 | 16,303 | 17,944 | 15,829 | 22,012 | 19,231 |
| | Blackburn | | | | | | | | | 19,666 | 17,103 |
| | Burnley | | | | | | | | | 18,139 | 15,549 |
| Manchester & Cheshire | Bolton | 19,774 | 16,875 | 20,652 | 18,013 | 16,867 | 14,600 | 19,526 | 16,723 | 24,980 | 21,652 |
| | Bury | | | | | | | | | 15,922 | 13,202 |
| | Bury & Rochdale | | | | | | | 30,893 | 25,607 | 32,703 | 26,625 |
| | Leighton | 32,490 | 28,590 | 32,846 | 29,312 | 31,224 | 27,387 | 19,754 | 16,635 | 23,280 | 19,713 |
| | Macclesfield | | | | | | | 15,303 | 13,715 | 18,187 | 16,364 |
| | Manchester | 91,667 | 80,308 | 102,966 | 91,545 | 85,485 | 74,250 | 86,887 | 74,110 | 100,023 | 84,851 |
| | Oldham | 42,578 | 35,961 | 43,857 | 37,269 | 40,628 | 33,722 | 13,667 | 11,033 | 16,166 | 13,022 |
| | Rochdale | | | | | | | | | 16,781 | 13,423 |
| | Stepping Hill | 23,765 | 21,002 | 25,668 | 22,298 | 26,527 | 23,111 | 26,234 | 22,695 | 28,120 | 23,909 |
| | Tameside | 15,584 | 13,726 | 16,915 | 14,948 | 16,134 | 13,921 | 15,994 | 13,804 | 16,140 | 13,812 |
| Merseyside & Cheshire | Aintree | 18,027 | 15,469 | 20,440 | 17,944 | 18,903 | 16,662 | 19,193 | 16,965 | 19,450 | 17,142 |
| | Arrove Park | 22,946 | 19,811 | 23,657 | 20,727 | 21,794 | 19,031 | 23,967 | 20,732 | 25,514 | 21,969 |
| | Chester | 20,516 | 17,651 | 20,881 | 18,402 | 18,411 | 15,815 | 20,455 | 17,582 | 22,687 | 19,802 |
| | Liverpool | 25,574 | 20,865 | 30,194 | 24,850 | 26,983 | 21,608 | 24,733 | 19,005 | 26,706 | 19,849 |
| | Southport | 14,591 | 12,598 | 15,750 | 13,822 | 14,420 | 12,615 | 15,264 | 13,406 | 15,538 | 13,452 |
| | Warrington | 27,238 | 22,045 | 25,510 | 22,390 | 21,784 | 18,936 | 24,883 | 21,186 | 31,143 | 26,597 |
| | Whiston | 18,142 | 15,252 | 19,665 | 16,804 | 17,506 | 14,609 | 18,727 | 15,485 | 22,251 | 17,912 |
| | | | | | | | | | | | |
| Northern | Carlisle | 22,471 | 20,212 | 23,693 | 21,331 | 23,462 | 21,018 | 25,440 | 22,785 | 25,238 | 22,237 |

Source Cervical Screening Programme, England:2009-10: Table 19 © 2010, The Health and Social Care Information Centre

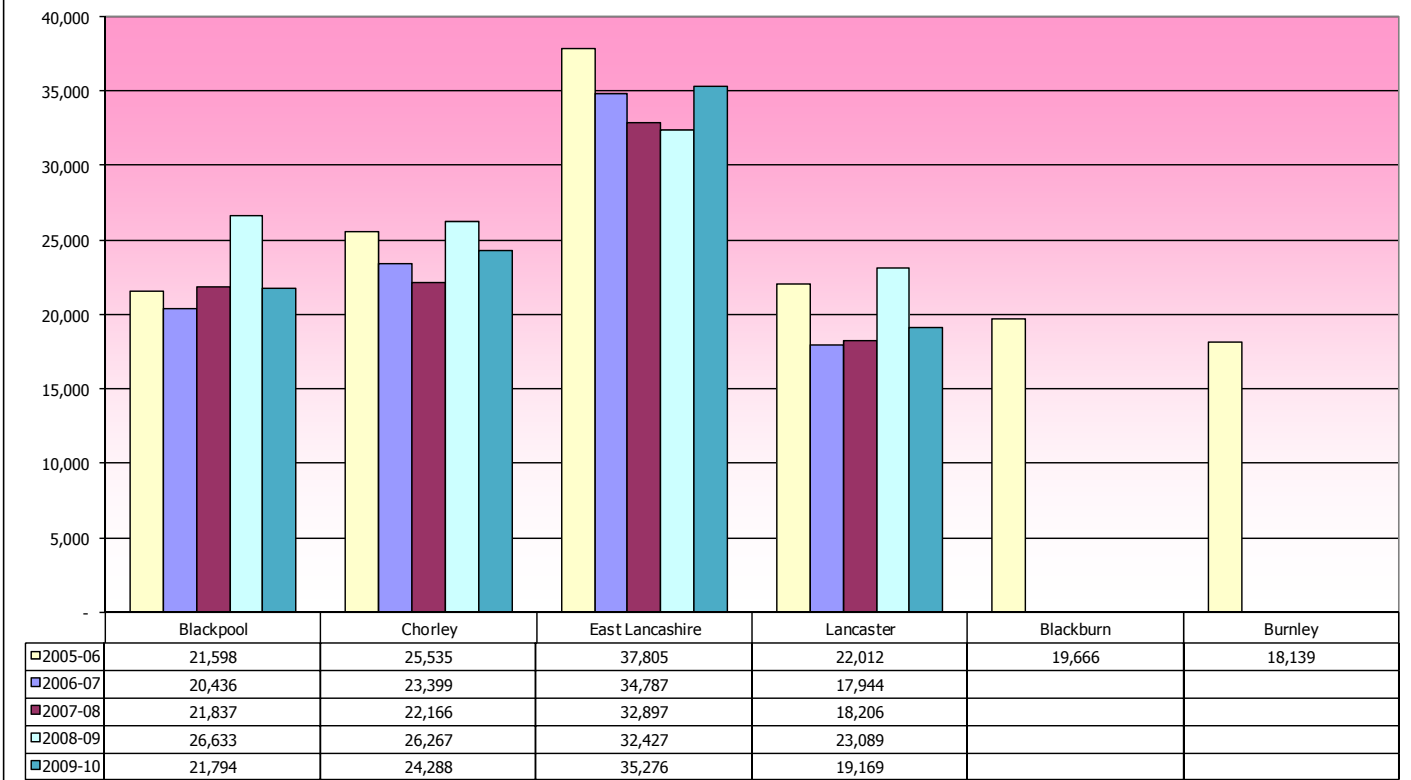
Workload (all sources, all ages) 2005-2010 for Greater Manchester & Cheshire Cancer Network.



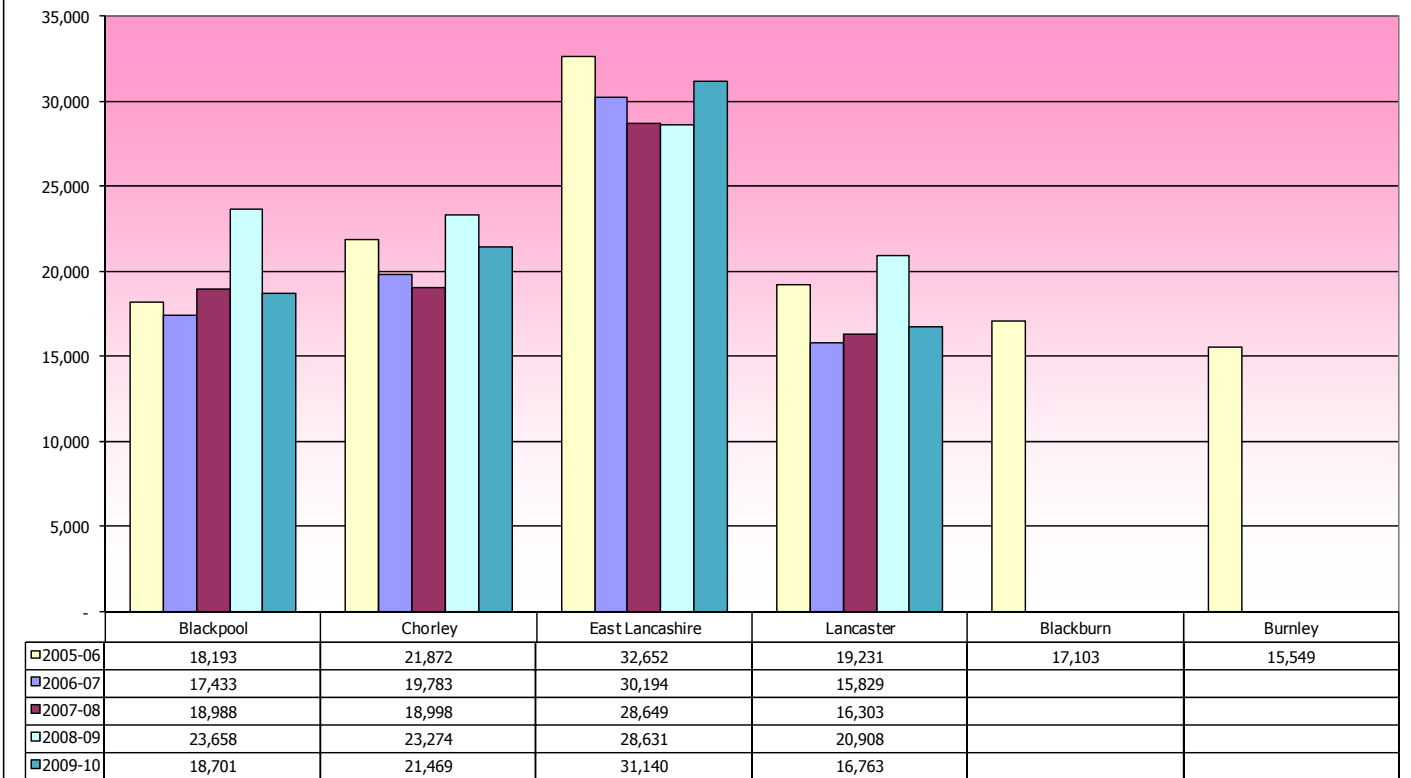
Workload (GP & NHSCC) 2005-2010 for Greater Manchester & Cheshire Cancer Network.



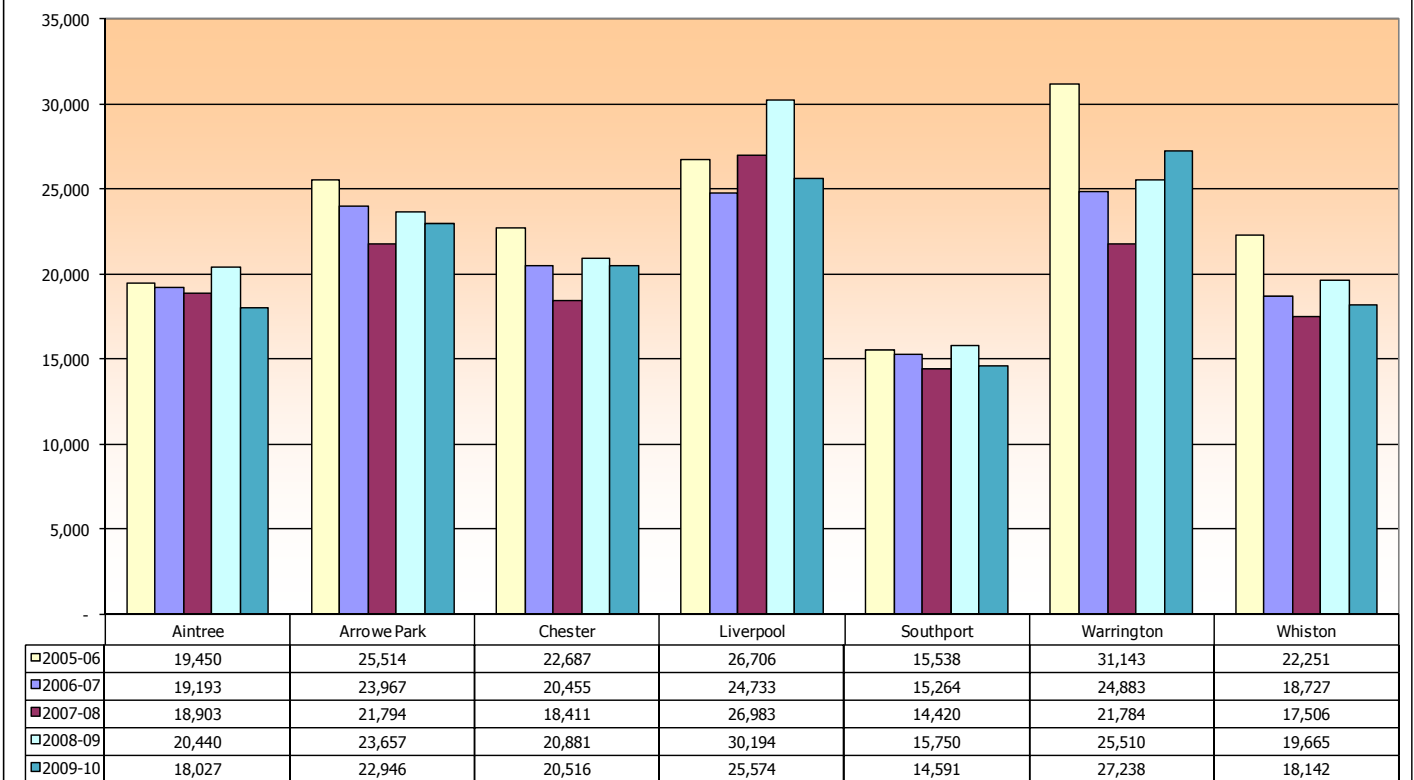
Workload (all sources, all ages) 2005-2010 for Lancashire & South Cumbria Cancer Network.



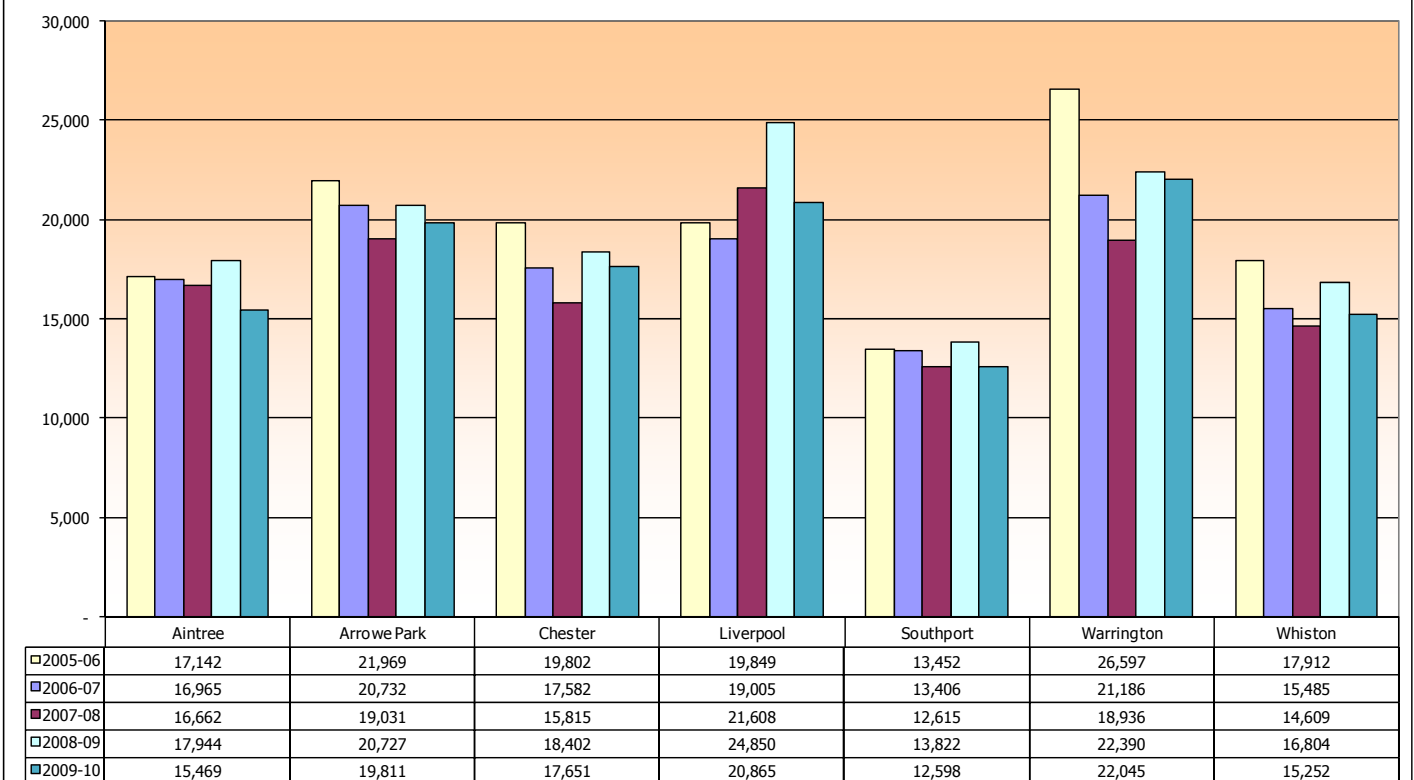
Workload (GP & NHSC) 2005-2010 for Lancashire & South Cumbria Cancer Network.



Workload (all sources, all ages) 2005-2010 for Merseyside& Cheshire Cancer Network.



Workload (GP & NHSCC) 2005-2010 for Merseyside& Cheshire Cancer Network.



Measuring laboratory performance in the North West

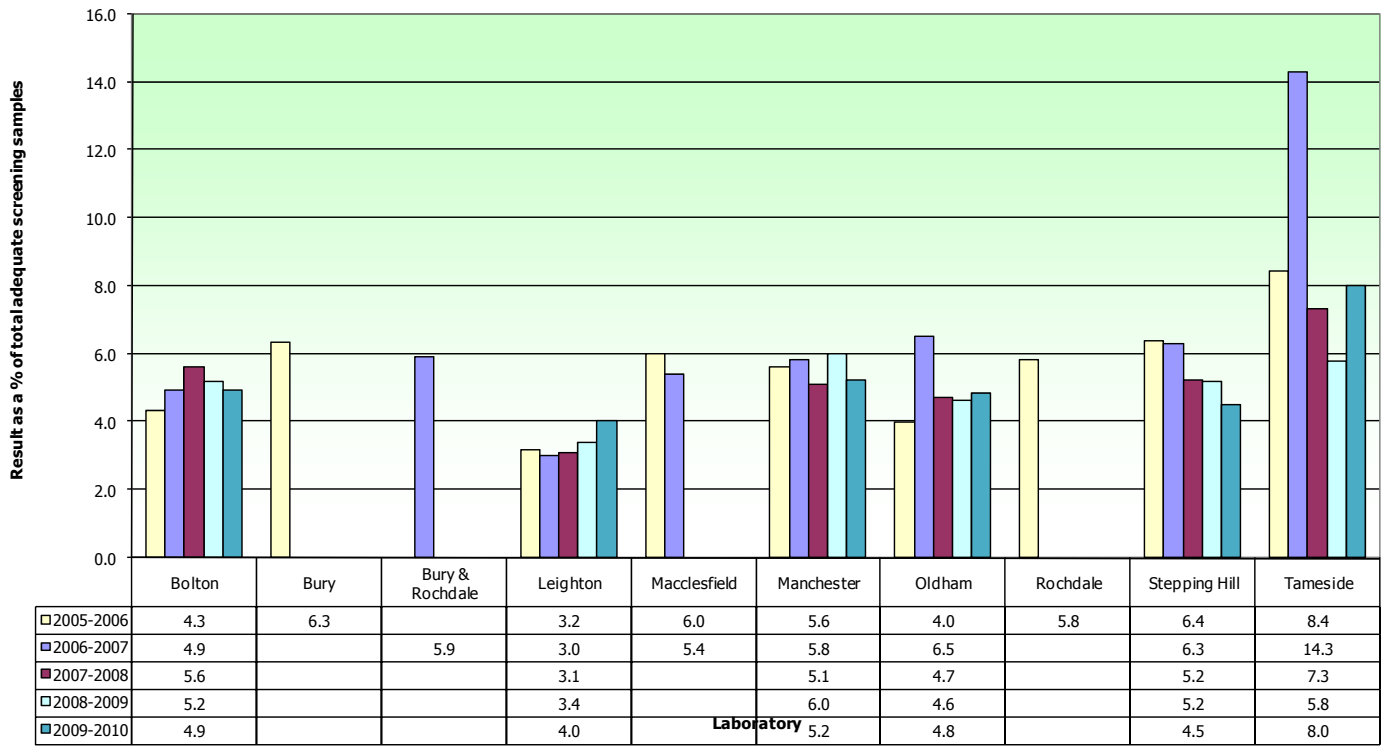
2005-06 to 2009-10

Reporting Profile

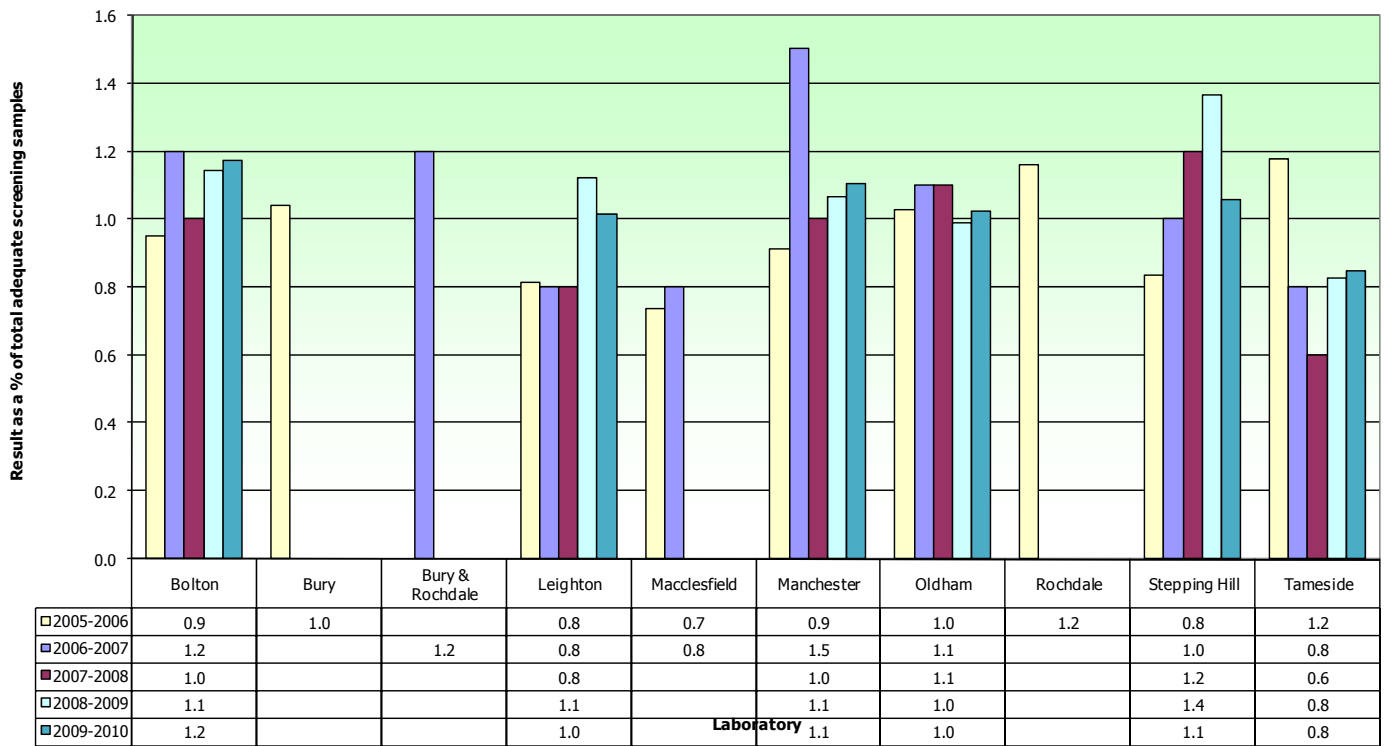
| Reporting Profile Quality Standards Low Grade 3.9% - 7.4% High Grade 0.8% - 1.5% * | | | | | | | | | | | |
|---|---------------------|------------------------------|--|------------------------------|--|------------------------------|--|------------------------------|--|------------------------------|--|
| Laboratory by Cancer Network | | 2009-2010 | | 2008-2009 | | 2007-2008 | | 2006-2007 | | 2005-2006 | |
| | | Low Grade Borderline/Mild | High Grade Moderate/Severe & above | Low Grade Borderline/Mild | High Grade Moderate/Severe & above | Low Grade Borderline/Mild | High Grade Moderate/Severe & above | Low Grade Borderline/Mild | High Grade Moderate/Severe & above | Low Grade Borderline/Mild | High Grade Moderate/Severe & above |
| Lancs & S Cumbria | Blackburn | | | | | | | | | 4.8 | 0.8 |
| | Blackpool | 4.9 | 1.7 | 4.8 | 1.3 | 5.4 | 1.2 | 6.5 | 1.7 | 4.6 | 1.1 |
| | East Lancashire Hos | 5.0 | 0.8 | 5.7 | 0.9 | 5.8 | 0.7 | 5.6 | 0.7 | | |
| | Burnley | | | | | | | | | 6.2 | 0.8 |
| | Chorley | 5.9 | 1.4 | 6.4 | 1.3 | 6.9 | 1.1 | 6.4 | 1.4 | 5.0 | 1.0 |
| | Lancaster | 5.0 | 1.1 | 5.4 | 1.0 | 6.5 | 1.0 | 5.9 | 0.9 | 5.0 | 0.7 |
| Manchester & Cheshire | Bolton | 4.9 | 1.2 | 5.2 | 1.1 | 5.6 | 1.0 | 4.9 | 1.2 | 4.3 | 0.9 |
| | Bury | | | | | | | | | 6.3 | 1.0 |
| | Bury & Rochdale | | | | | | | 5.9 | 1.2 | | |
| | Leighton | 4.0 | 1.0 | 3.4 | 1.1 | 3.1 | 0.8 | 3.0 | 0.8 | 3.2 | 0.8 |
| | Macclesfield | | | | | | | 5.4 | 0.8 | 6.0 | 0.7 |
| | Manchester | 5.2 | 1.1 | 6.0 | 1.1 | 5.1 | 1.0 | 5.8 | 1.5 | 5.6 | 0.9 |
| | Oldham | 4.8 | 1.0 | 4.6 | 1.0 | 4.7 | 1.1 | 6.5 | 1.1 | 4.0 | 1.0 |
| | Rochdale | | | | | | | | | 5.8 | 1.2 |
| | Stepping Hill | 4.5 | 1.1 | 5.2 | 1.4 | 5.2 | 1.2 | 6.3 | 1.0 | 6.4 | 0.8 |
| | Tameside | 8.0 | 0.8 | 5.8 | 0.8 | 7.3 | 0.6 | 14.3 | 0.8 | 8.4 | 1.2 |
| Merseyside & Cheshire | Aintree | 5.2 | 1.5 | 7.5 | 2.0 | 8.1 | 1.4 | 5.9 | 1.1 | 7.0 | 1.2 |
| | Arrove Park | 7.2 | 1.1 | 6.5 | 1.2 | 6.4 | 0.7 | 6.0 | 0.7 | 6.6 | 0.7 |
| | Chester | 5.4 | 1.0 | 5.7 | 1.1 | 5.2 | 1.0 | 5.3 | 0.9 | 3.9 | 0.9 |
| | Liverpool | 4.9 | 2.1 | 5.1 | 1.7 | 5.3 | 1.3 | 5.2 | 1.2 | 5.5 | 1.4 |
| | Southport | 7.2 | 1.0 | 7.5 | 0.9 | 10.0 | 1.4 | 7.2 | 1.1 | 6.0 | 1.3 |
| | Warrington | 4.7 | 1.5 | 4.4 | 1.2 | 5.2 | 1.4 | 4.6 | 1.3 | 5.4 | 1.4 |
| | Whiston | 5.7 | 0.9 | 5.7 | 1.0 | 5.6 | 0.8 | 5.5 | 1.0 | 4.7 | 1.0 |
| | Northern | Carlisle | 4.4 | 0.9 | 5.4 | 1.2 | 5.8 | 1.0 | 6.5 | 1.1 | 6.1 |

Source Cervical Screening Programme, England:2009-10 : Table 19 © 2010, The Health and Social Care Information Centre

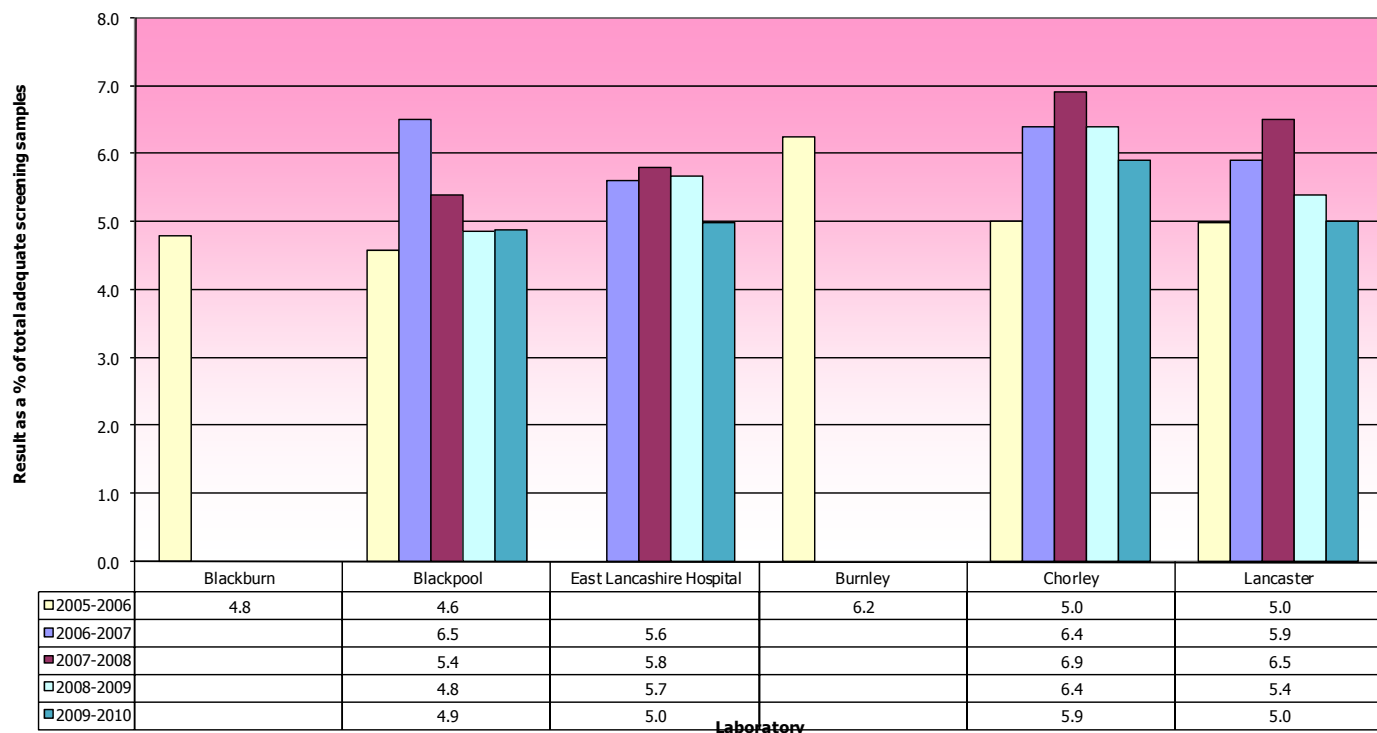
Laboratory Reporting Profiles for Low Grade (Borderline/Mild) Sample Results for Greater Manchester & Cheshire Cancer Network 2005- 2010



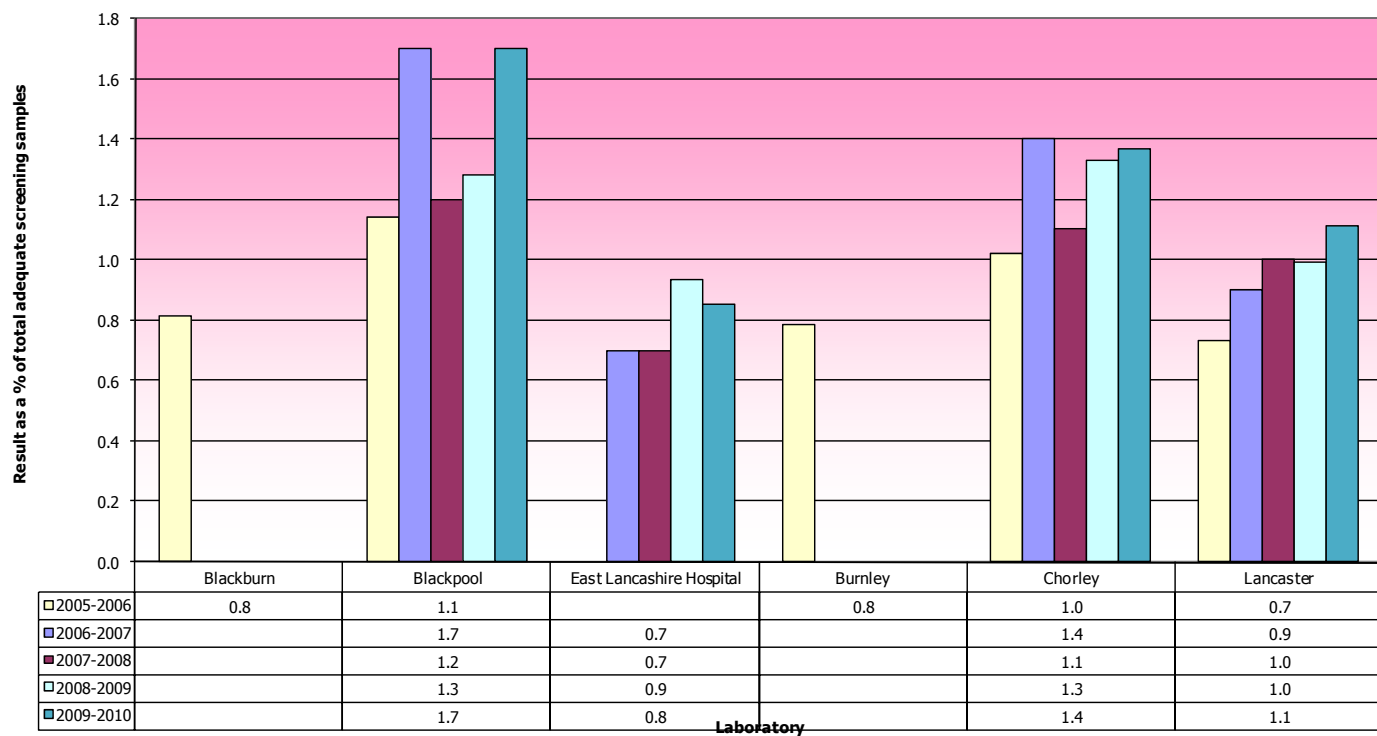
Laboratory Reporting Profiles for High Grade (Moderate/Severe & above) Sample Results for Greater Manchester & Cheshire Cancer Network 2005 - 2010



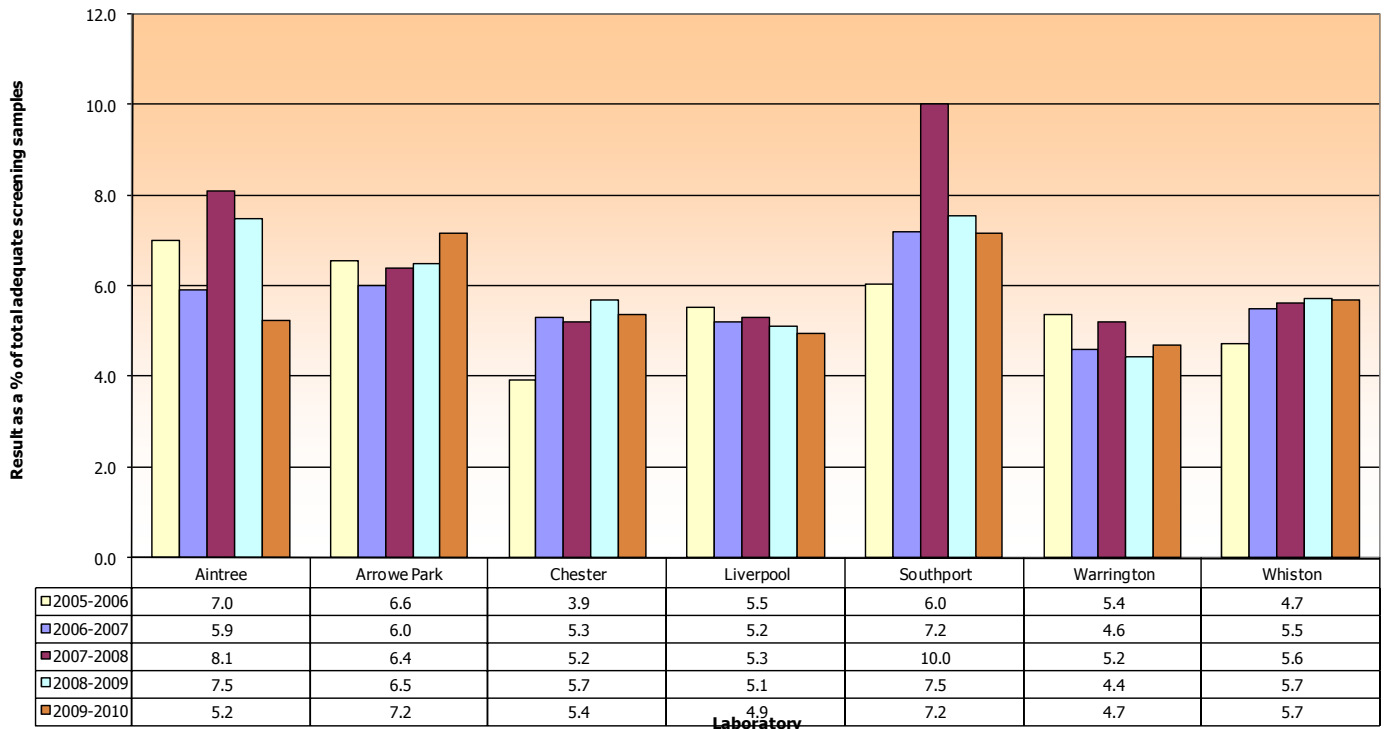
Laboratory Reporting Profiles for Low Grade (Borderline/Mild) Sample Results for Lancashire & South Cumbria Cancer Network 2005 - 2010



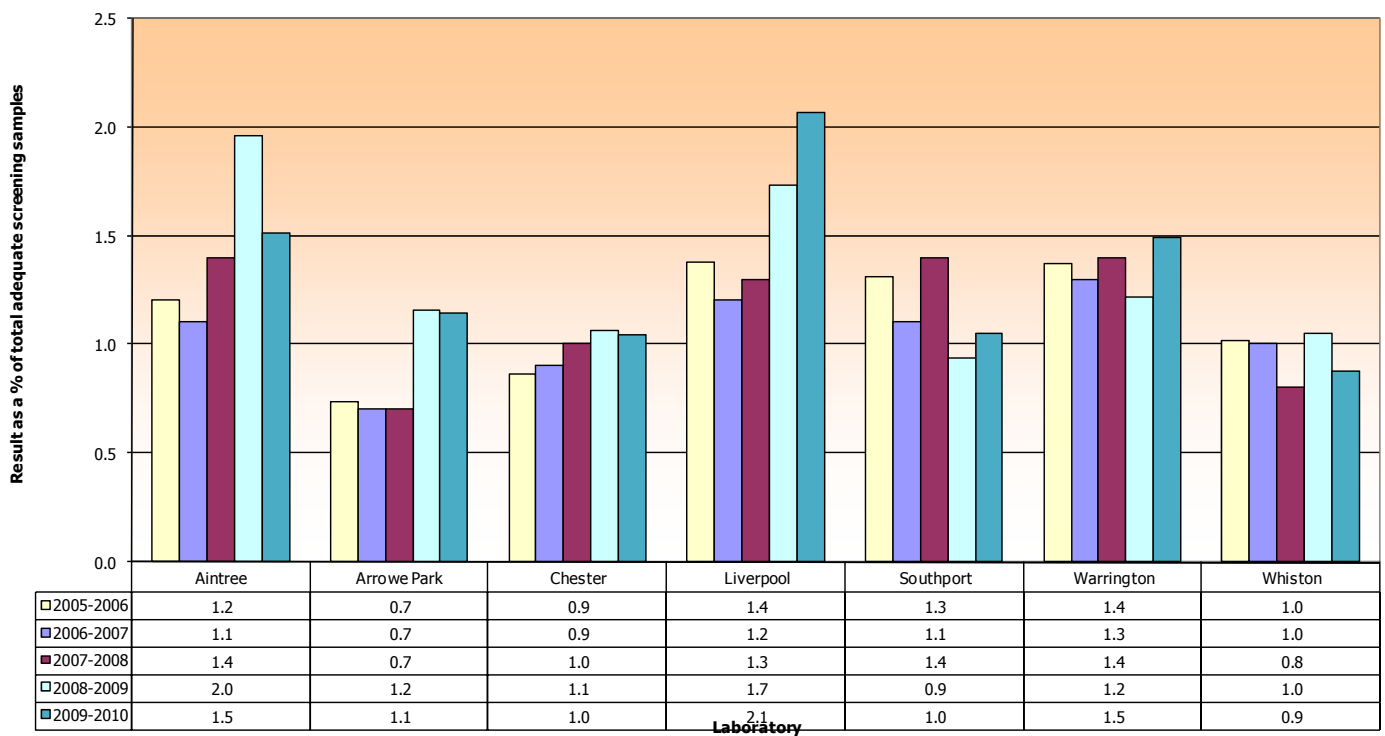
Laboratory Reporting Profiles for High Grade (Moderate/Severe and above) Sample Results for Lancashire & South Cumbria Cancer Network 2005- 2010



Laboratory Reporting Profiles for Low Grade (Borderline/Mild) Sample Results for Merseyside & Cheshire Cancer Network 2005- 2010



Laboratory Reporting Profiles for High Grade (Moderate/Severe and above) Sample Results for Merseyside & Cheshire Cancer Network 2005- 2010



Measuring laboratory performance in the North West

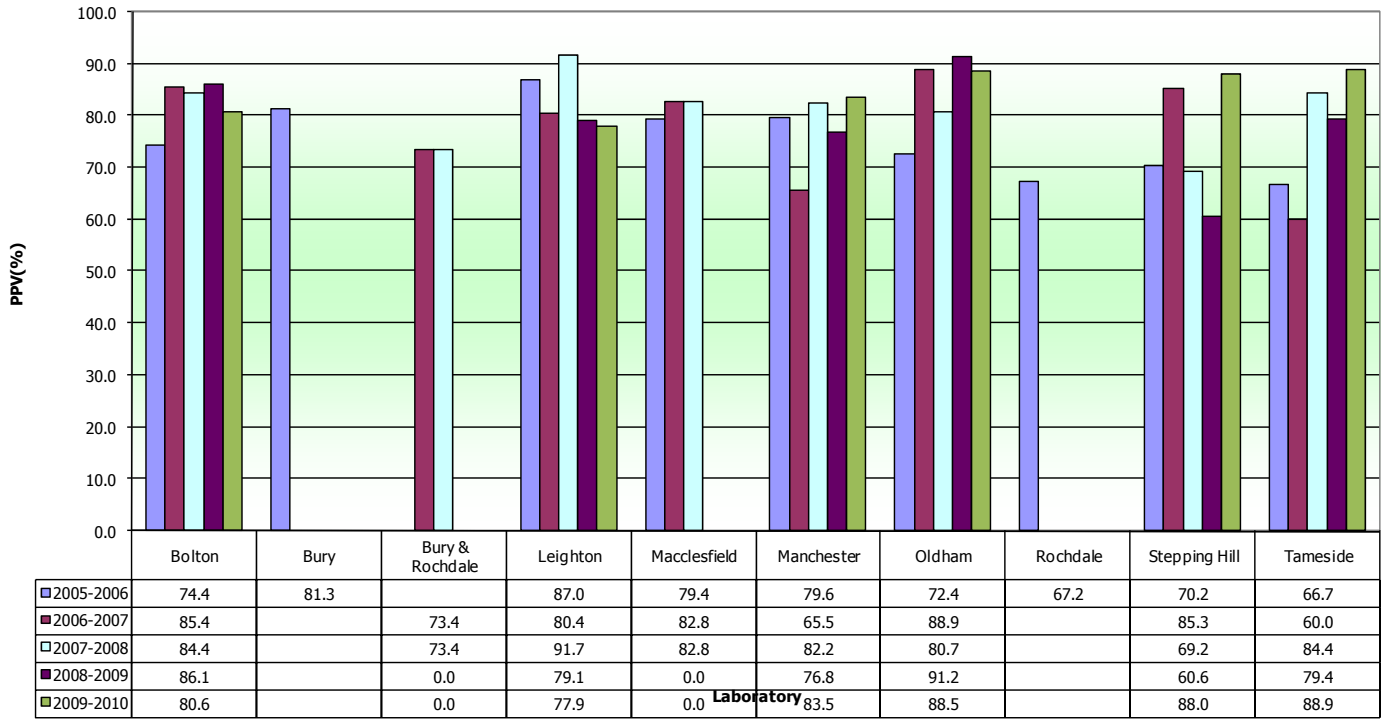
2005-06 to 2009-10

PPV %

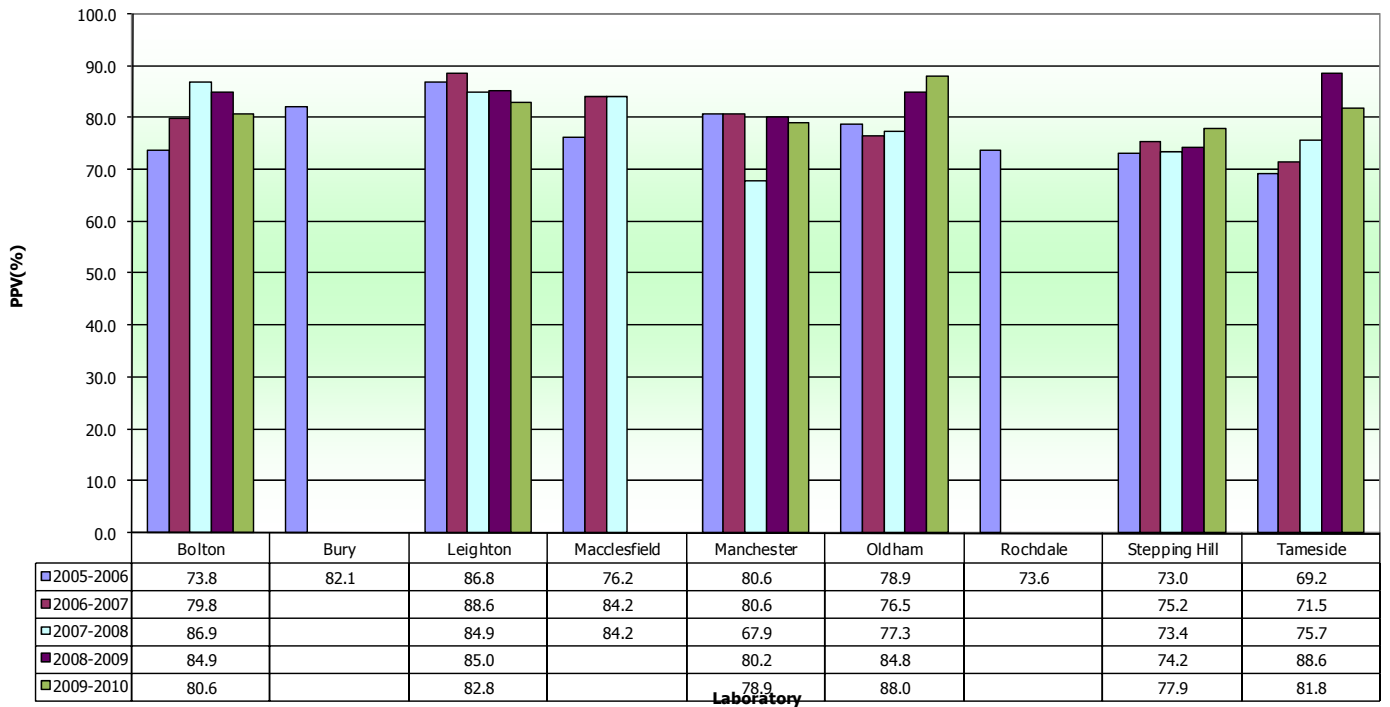
| Correlation of Cytology & Histology Quality Standard 74.2% to 90.3% | | Positive Predictive Value (%) | | | | | | | | | |
|--|-----------------|-------------------------------|-------------------------------|-------------------------------|-------------------------------|-------------------------------|-------------------------------|-------------------------------|-------------------------------|-------------------------------|-------------------------------|
| | | 2009-2010 | | 2008-2009 | | 2007-2008 | | 2006-2007 | | 2005-2006 | |
| Laboratory by Cancer Network | | Part C1 Apr 09 - Jun 09 | Part C2 Apr 08 - Mar 09 | Part C1 Apr 08 - Jun 08 | Part C2 Apr 07 - Mar 08 | Part C1 Apr 07 - Jun 07 | Part C2 Apr 06 - Mar 07 | Part C1 Apr 06 - Jun 06 | Part C2 Apr 05 - Mar 06 | Part C1 Apr 05 - Jun 05 | Part C2 Apr 04 - Mar 05 |
| Lancs & S Cumbria | Blackburn | | | | | | | | | 59.3 | 59.9 |
| | Blackpool | 84.7 | 90.2 | 95.9 | 85.2 | 81.2 | 83.0 | 87.1 | 85.1 | 82.5 | 83.4 |
| | Burnley | | | | | | | | | 86.7 | 82.3 |
| | East Lancashire | 75.3 | 74.7 | 64.0 | 70.4 | 77.9 | 79.0 | 85.9 | 80.9 | | |
| | Chorley | 79.5 | 88.4 | 85.4 | 84.9 | 89.8 | 83.3 | 75.0 | 82.1 | 80.3 | 80.8 |
| | Lancaster | 80.8 | 76.5 | 73.6 | 77.6 | 85.7 | 73.7 | 61.9 | 79.0 | 68.6 | 71.9 |
| Manchester & Cheshire | Bolton | 80.6 | 80.6 | 86.1 | 84.9 | 84.4 | 86.9 | 85.4 | 79.8 | 74.4 | 73.8 |
| | Bury | | | | | | | | | 81.3 | 82.1 |
| | Bury & Rochdale | | | | | 73.4 | | 73.4 | | | |
| | Leighton | 77.9 | 82.8 | 79.1 | 85.0 | 91.7 | 84.9 | 80.4 | 88.6 | 87.0 | 86.8 |
| | Macclesfield | | | | | 82.8 | 84.2 | 82.8 | 84.2 | 79.4 | 76.2 |
| | Manchester | 83.5 | 78.9 | 76.8 | 80.2 | 82.2 | 67.9 | 65.5 | 80.6 | 79.6 | 80.6 |
| | Oldham | 88.5 | 88.0 | 91.2 | 84.8 | 80.7 | 77.3 | 88.9 | 76.5 | 72.4 | 78.9 |
| | Rochdale | | | | | | | | | 67.2 | 73.6 |
| | Stepping Hill | 88.0 | 77.9 | 60.6 | 74.2 | 69.2 | 73.4 | 85.3 | 75.2 | 70.2 | 73.0 |
| Tameside | 88.9 | 81.8 | 79.4 | 88.6 | 84.4 | 75.7 | 60.0 | 71.5 | 66.7 | 69.2 | |
| Merseyside & Cheshire | Aintree | 85.0 | 87.4 | 82.8 | 83.8 | 83.1 | 79.4 | 66.2 | 80.7 | 89.4 | 85.5 |
| | Arrowe Park | 91.6 | 89.6 | 95.1 | 87.6 | 89.1 | 86.4 | 86.8 | 81.5 | 80.4 | 80.7 |
| | Chester | 92.1 | 87.1 | 81.8 | 93.1 | 93.9 | 89.2 | 86.3 | 85.6 | 81.6 | 74.0 |
| | Liverpool | 92.6 | 91.5 | 89.9 | 86.9 | 92.9 | 91.1 | 89.7 | 84.7 | 82.7 | 84.6 |
| | Southport | 69.2 | 78.5 | 78.3 | 75.3 | 76.6 | 73.6 | 65.9 | 70.5 | 68.1 | 76.6 |
| | Warrington | 88.1 | 86.2 | 87.5 | 83.7 | 87.0 | 90.6 | 89.9 | 85.6 | 84.6 | 85.1 |
| | Whiston | 85.5 | 85.6 | 90.6 | 85.6 | 96.7 | 82.8 | 76.8 | 78.9 | 86.2 | 81.7 |
| Northern | Carlisle | 81.4 | 87.4 | 83.0 | 86.7 | 88.2 | 86.7 | 84.5 | 90.9 | 91.4 | 82.3 |

Source Cervical Screening Programme, England:2009-10: Table 19 © 2010, The Health and Social Care Information Centre

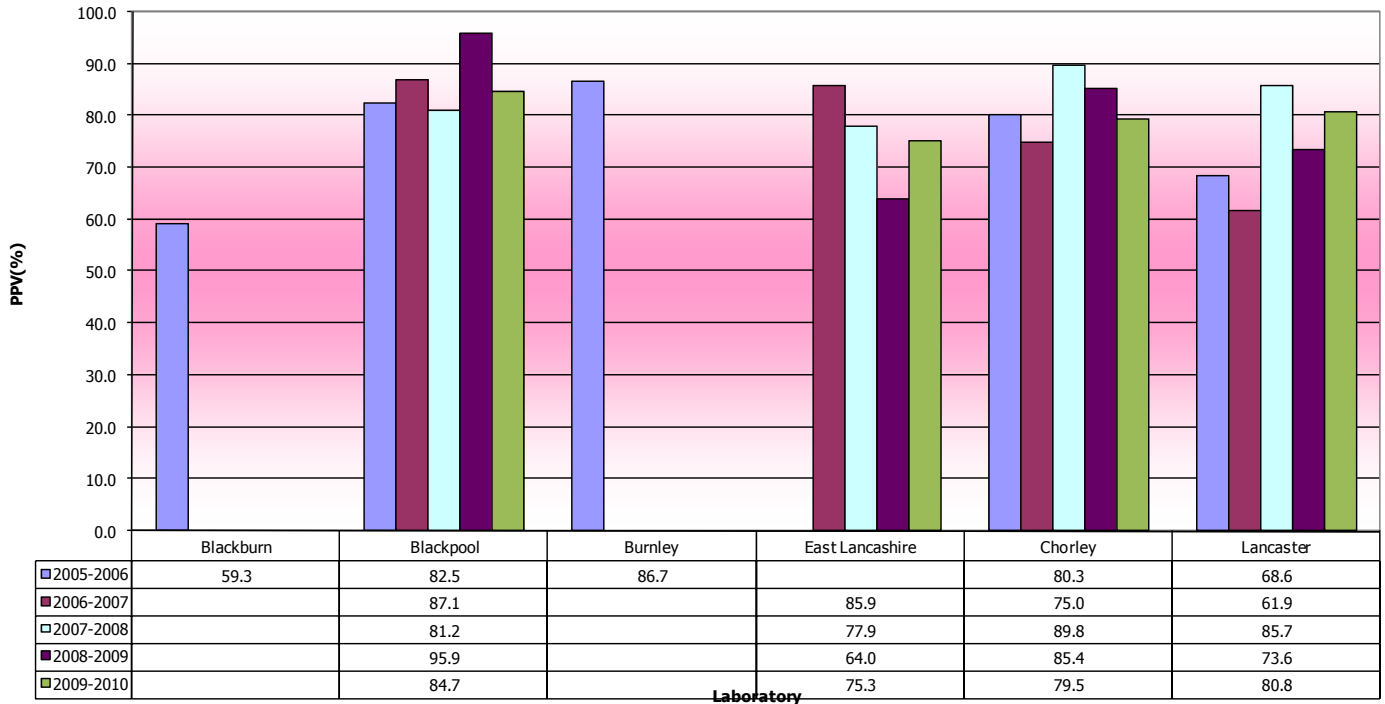
Positive Predictive Value (C1) by Laboratory 2005-2010 for Greater Manchester & Cheshire Cancer Network.
Standard 74.2% to 90.3%



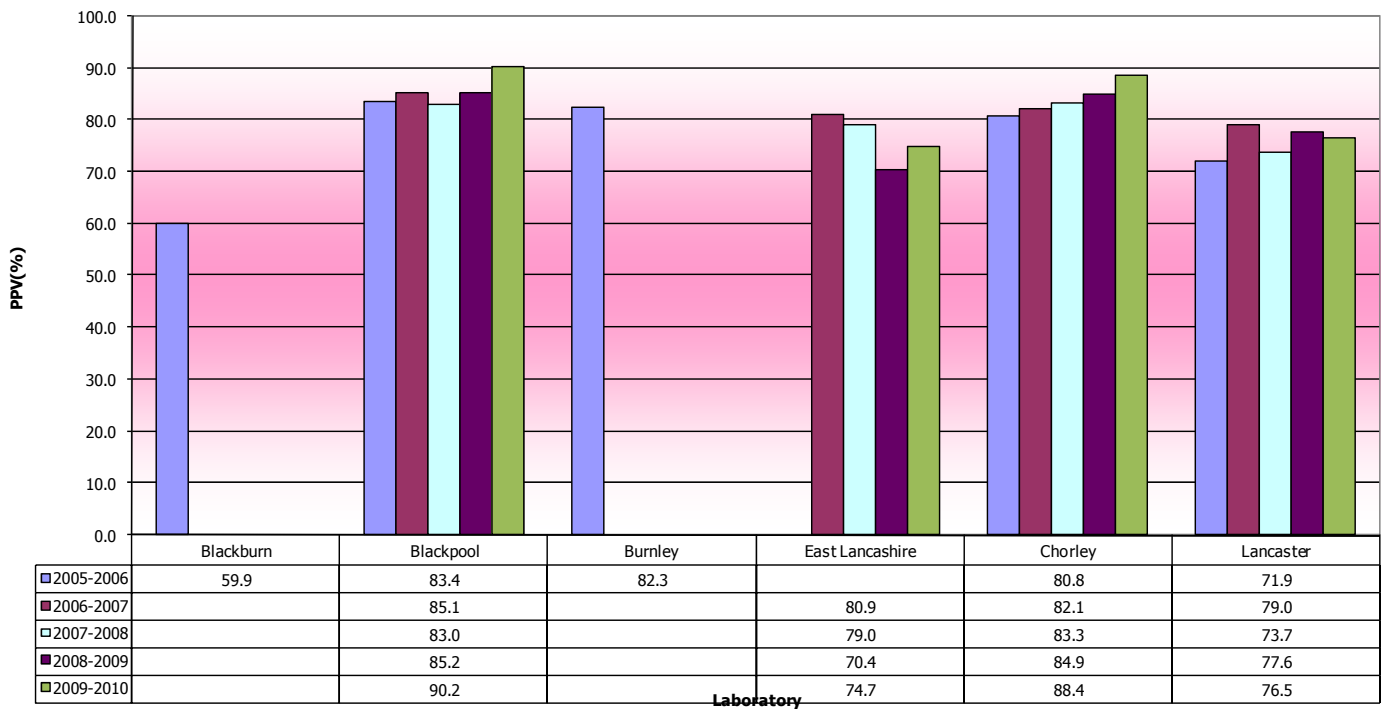
Positive Predictive Value (C2) by Laboratory 2005- 2010 for Greater Manchester & Cheshire Cancer Network.
Standard 74.2% to 90.3%



Positive Predictive Value (C1) by Laboratory 2005-2010 for Lancashire & South Cumbria Cancer Network.
Standard 74.2% to 90.3%

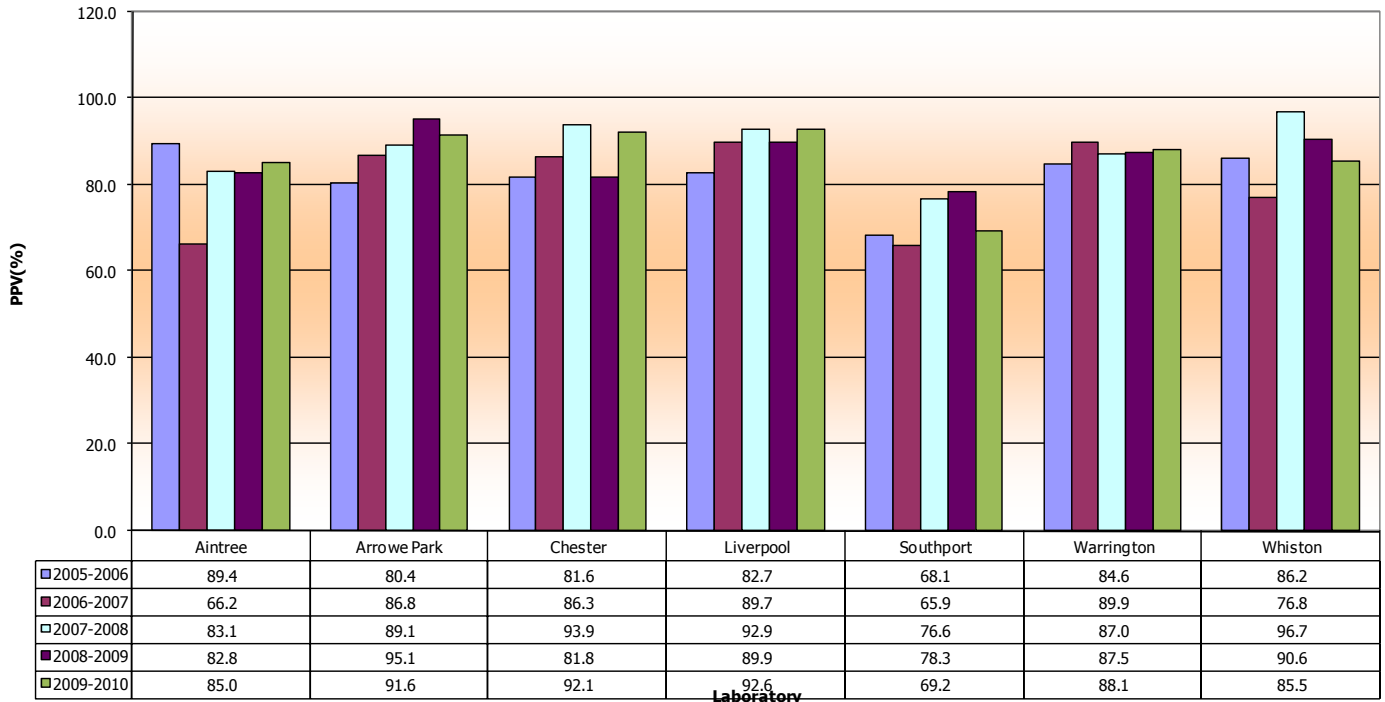


Positive Predictive Value (C2) by Laboratory 2005-2010 for Lancashire & South Cumbria Cancer Network.
Standard 74.2% to 90.3%



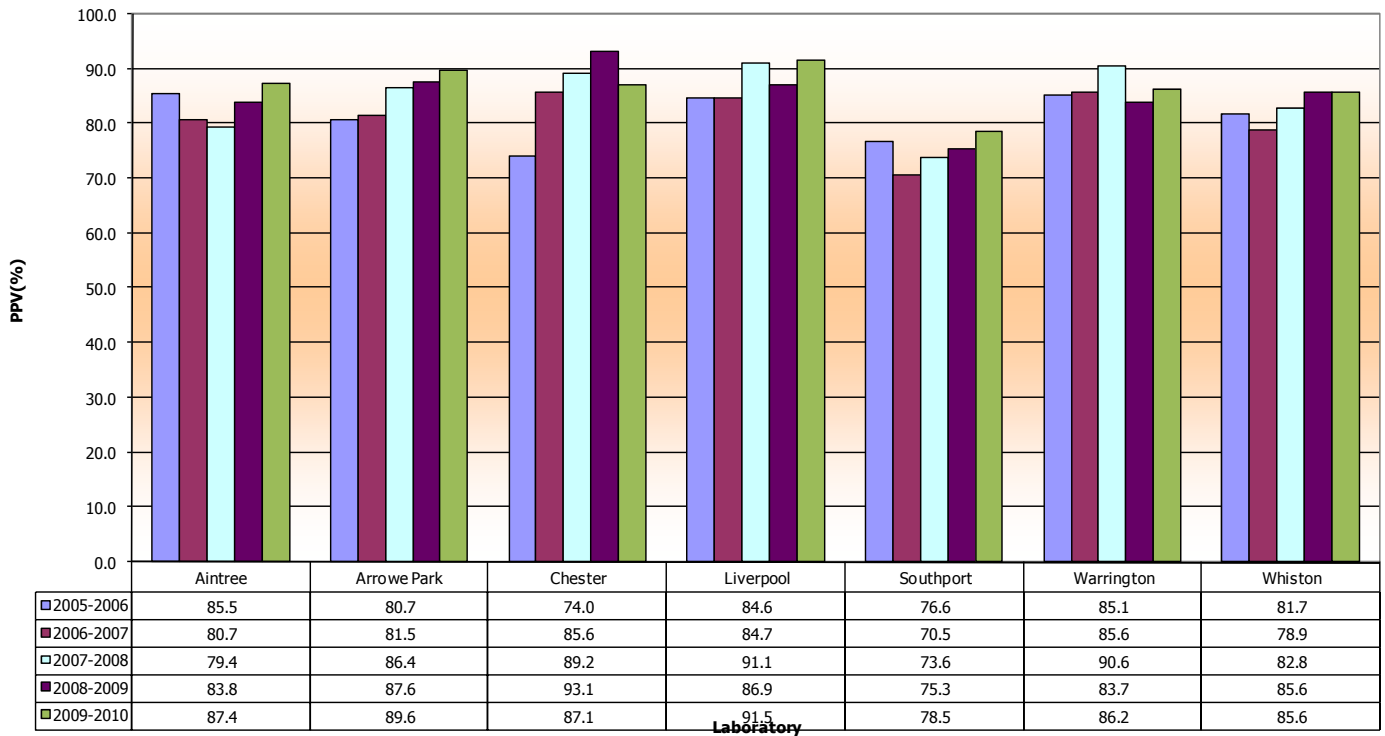
Positive Predictive Value (C1) by Laboratory 2005-2010 for Merseyside & Cheshire Cancer Network.

Standard 74.2% to 90.3%



Positive Predictive Value (C2) by Laboratory 2005-2010 for Merseyside & Cheshire Cancer Network.

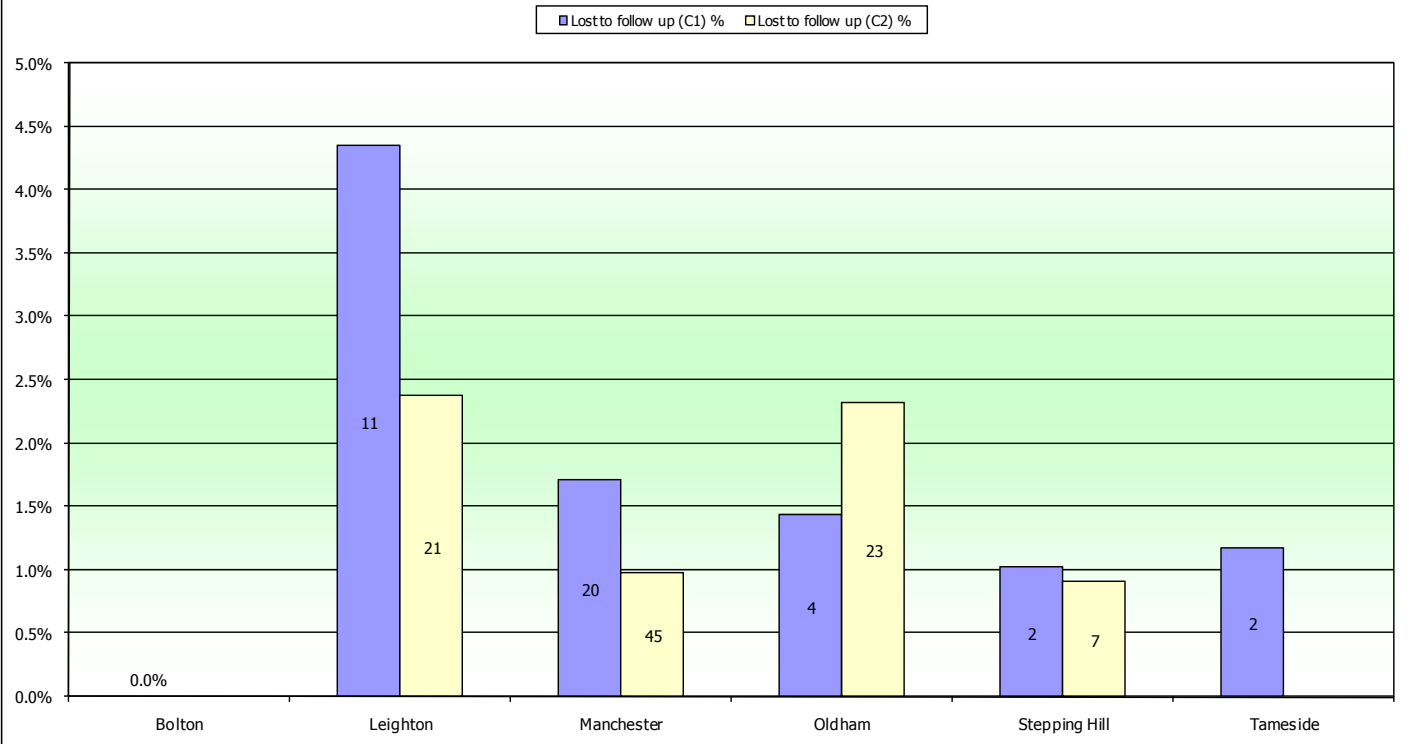
Standard 74.9% to 90.3%



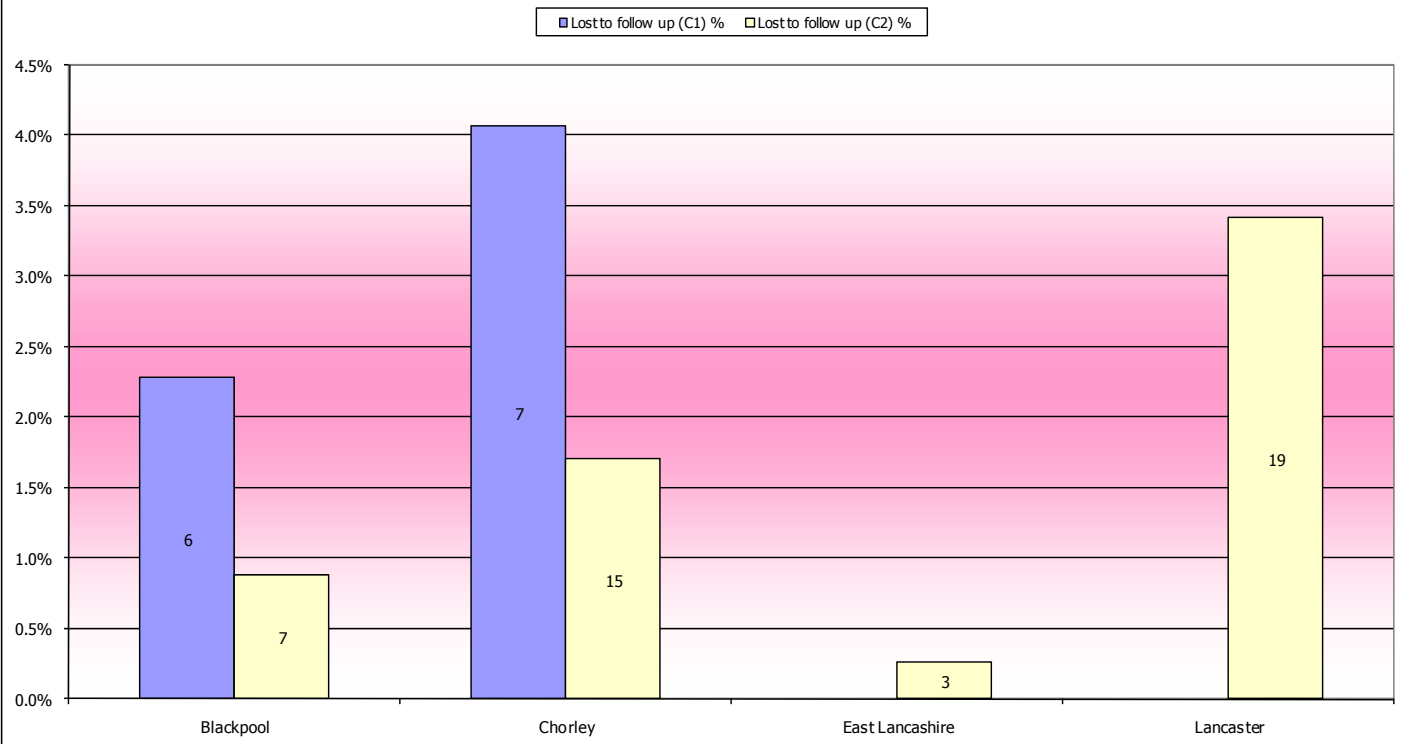
KC61 Parts C1 & C2 Lost to follow up as a percentage (target < 5%) and number

| Laboratory by Cancer Network | | Lost to follow up (C1) | | Lost to follow up (C2) | |
|------------------------------|---------------|------------------------|-----------|------------------------|--------|
| | | % | number | % | number |
| | | Lancs & S Cumbria | Blackpool | 2.3% | 6 |
| Chorley | 4.1% | | 7 | 1.7% | 15 |
| East Lancash | 0.0% | | 0 | 0.3% | 3 |
| Lancaster | 0.0% | | 0 | 3.4% | 19 |
| Manchester & Cheshire | Bolton | 0.0% | 0 | 0.0% | 0 |
| | Leighton | 4.4% | 11 | 2.4% | 21 |
| | Manchester | 1.7% | 20 | 1.0% | 45 |
| | Oldham | 1.4% | 4 | 2.3% | 23 |
| | Stepping Hill | 1.0% | 2 | 0.9% | 7 |
| | Tameside | 1.2% | 2 | 0.0% | 0 |
| Merseyside & Cheshire | Aintree | 2.8% | 11 | 0.3% | 5 |
| | Arrowe Park | 0.0% | 0 | 0.1% | 1 |
| | Chester | 0.6% | 1 | 1.6% | 11 |
| | Liverpool | 3.3% | 12 | 4.4% | 50 |
| | Southport | 0.8% | 4 | 4.0% | 5 |
| | Warrington | 3.3% | 9 | 0.7% | 5 |
| | Whiston | 0.0% | 0 | 0.0% | 0 |
| Northern | Carlisle | 1.5% | 2 | 1.1% | 7 |

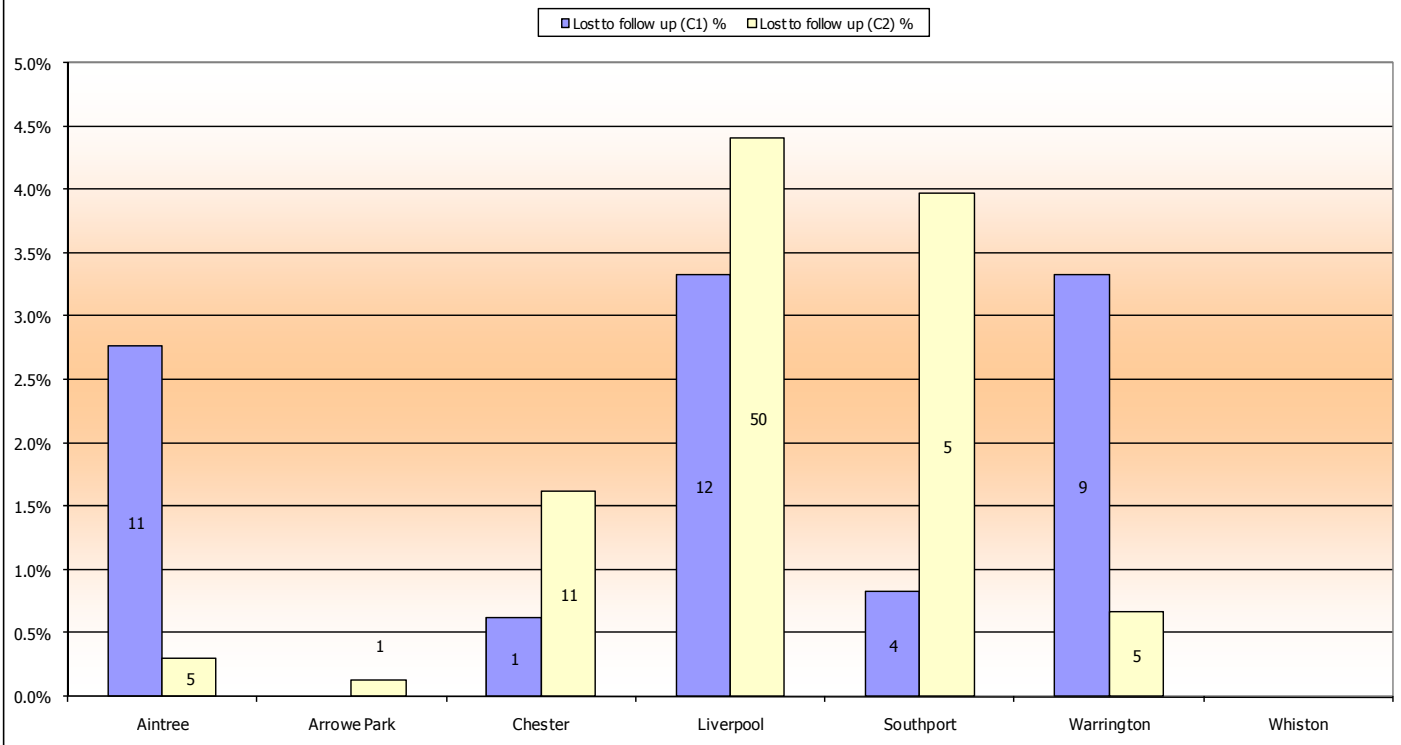
KC61 Parts C1 & C2 - Lost to follow up as a percentage (number in columns equals number of women).
Greater Manchester & Cheshire Cancer Network
 Target < 5%



KC61 Parts C1 & C2 - Lost to follow up as a percentage (number in columns equals number of women).
Lancashire & South Cumbria Cancer Network
 Target < 5%



KC61 Parts C1 & C2 - Lost to follow up as a percentage (number in columns equals number of women).
Merseyside & Cheshire Cancer Network
 Target < 5%



Measuring laboratory performance in the North West

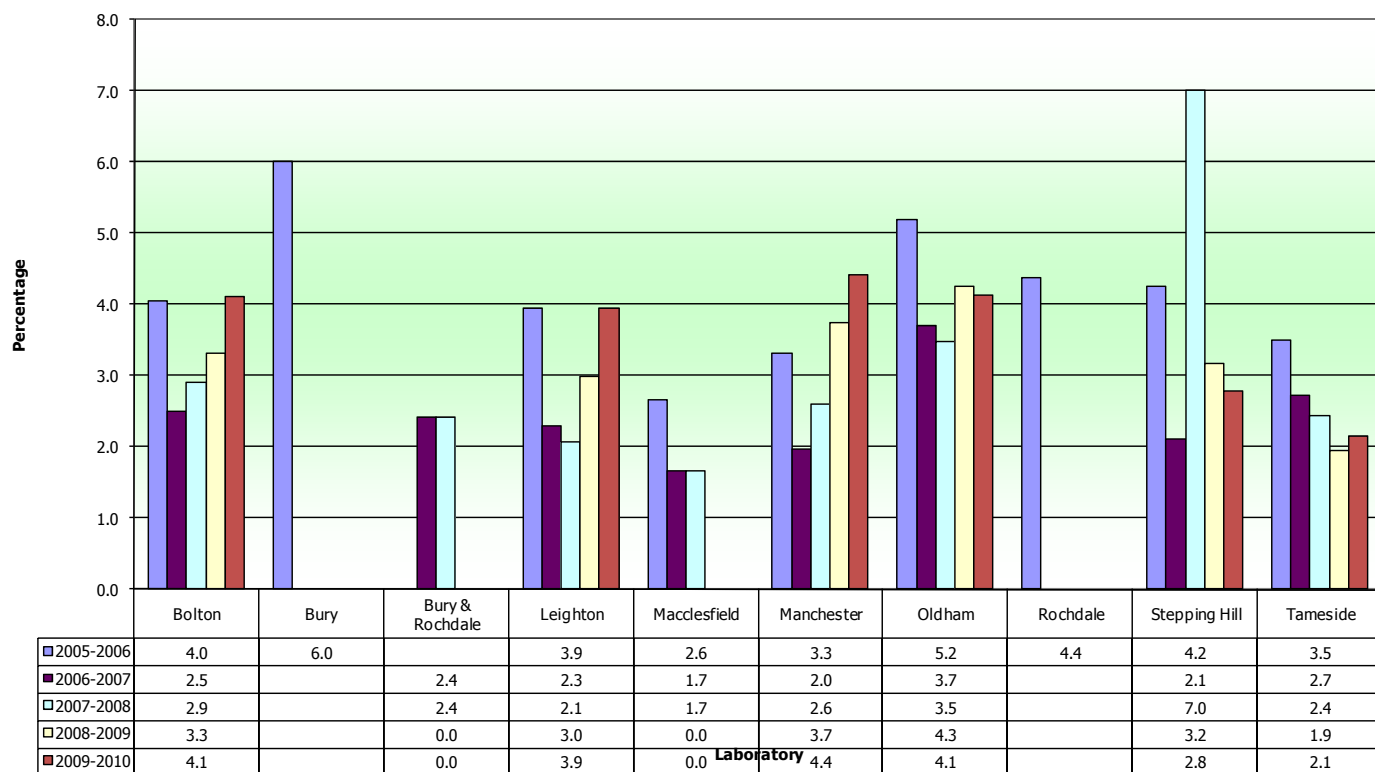
2005-06 to 2009-10

Inadequate Smears

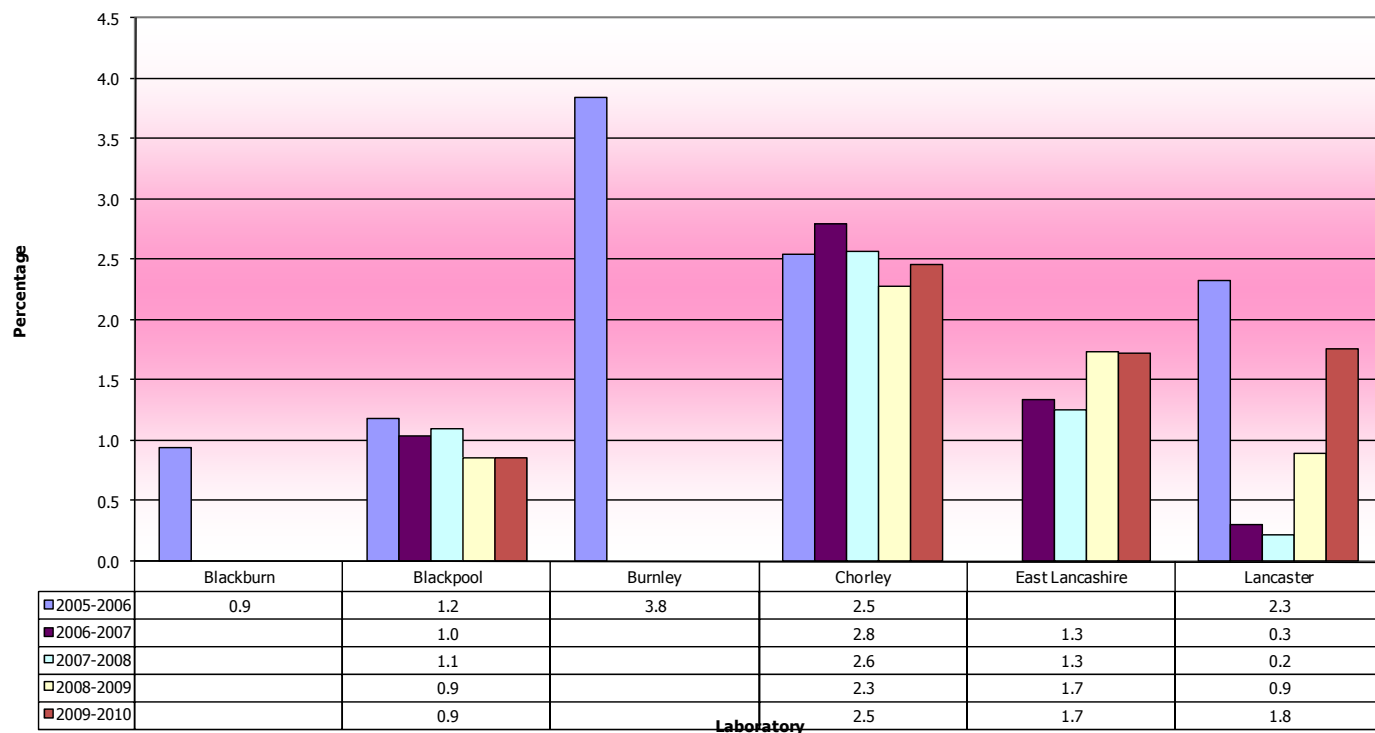
| Laboratory by Cancer Network | | Inadequate Rate (%) | | | | |
|------------------------------|-----------------|---------------------|-----------|-----------|-----------|-----------|
| | | 2009-2010 | 2008-2009 | 2007-2008 | 2006-2007 | 2005-2006 |
| | | (%) | (%) | (%) | (%) | (%) |
| Lancs & S Cumbria | Blackburn | | | | | 0.9 |
| | Blackpool | 0.9 | 0.9 | 1.1 | 1.0 | 1.2 |
| | Burnley | | | | | 3.8 |
| | Chorley | 2.5 | 2.3 | 2.6 | 2.8 | 2.5 |
| | East Lancashire | 1.7 | 1.7 | 1.3 | 1.3 | |
| | Lancaster | 1.8 | 0.9 | 0.2 | 0.3 | 2.3 |
| Manchester & Cheshire | Bolton | 4.1 | 3.3 | 2.9 | 2.5 | 4.0 |
| | Bury | | | | | 6.0 |
| | Bury & Rochdale | | | 2.4 | 2.4 | |
| | Leighton | 3.9 | 3.0 | 2.1 | 2.3 | 3.9 |
| | Macclesfield | | | 1.7 | 1.7 | 2.6 |
| | Manchester | 4.4 | 3.7 | 2.6 | 2.0 | 3.3 |
| | Oldham | 4.1 | 4.3 | 3.5 | 3.7 | 5.2 |
| | Rochdale | | | | | 4.4 |
| | Stepping Hill | 2.8 | 3.2 | 7.0 | 2.1 | 4.2 |
| | Tameside | 2.1 | 1.9 | 2.4 | 2.7 | 3.5 |
| Merseyside & Cheshire | Aintree | 1.8 | 2.8 | 2.6 | 0.9 | 0.9 |
| | Arrowe Park | 2.6 | 2.3 | 2.4 | 1.9 | 2.0 |
| | Chester | 3.5 | 3.6 | 3.4 | 3.5 | 4.8 |
| | Liverpool | 3.7 | 5.9 | 6.1 | 7.4 | 5.0 |
| | Southport | 1.4 | 1.4 | 1.0 | 1.1 | 1.2 |
| | Warrington | 3.3 | 4.8 | 3.8 | 1.5 | 5.5 |
| | Whiston | 1.6 | 1.8 | 1.8 | 1.5 | 7.0 |
| Northern | Carlisle | 0.8 | 1.0 | 0.9 | 0.5 | 0.6 |
| Average | | 2.6 | 2.7 | 2.6 | 2.2 | 3.4 |

Source Cervical Screening Programme, England:2009-10: Table 19 © 2010, The Health and Social Care Information Centre

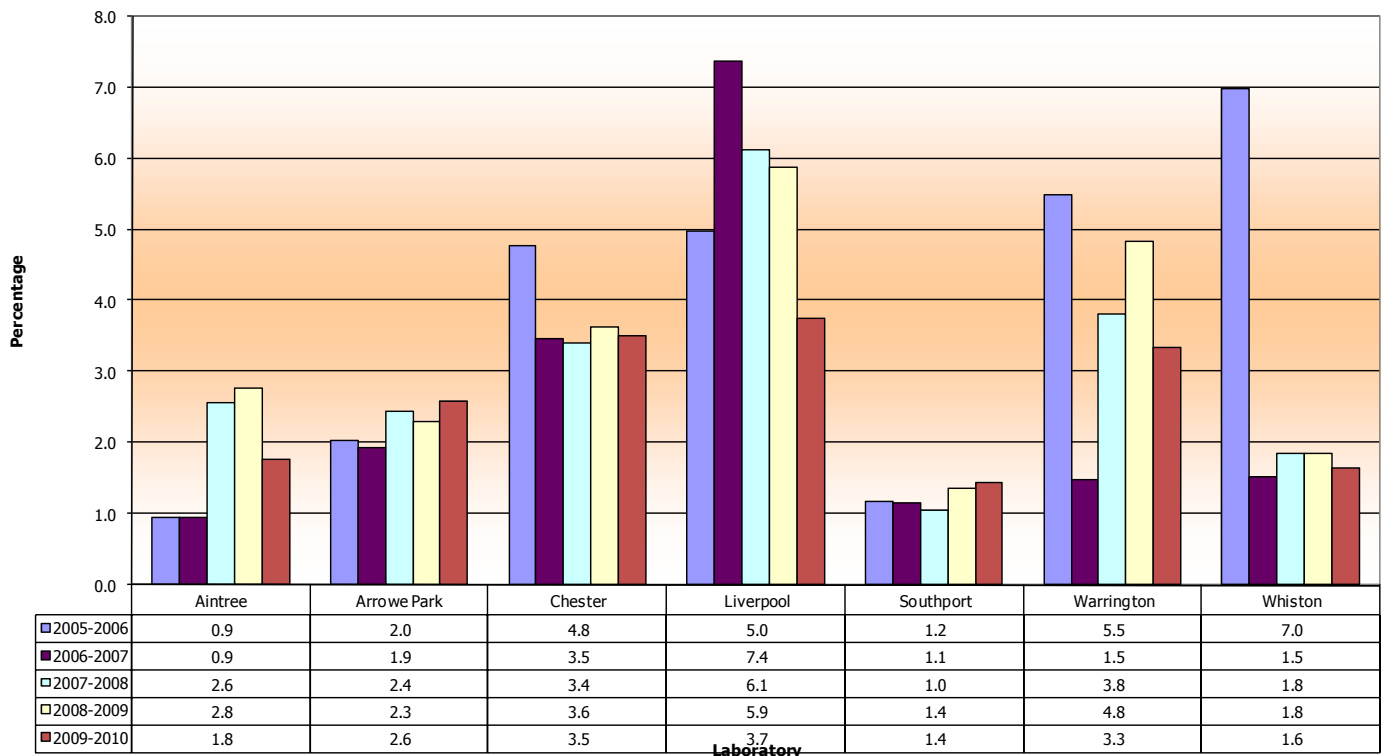
Inadequate Rates by Laboratory 2005-2010 for Greater Manchester & Cheshire Cancer Network



Inadequate Rates by Laboratory 2005-2010 for Lancashire & South Cumbria Cancer Network



Inadequate Rates by Laboratory 2005-2010 for Merseyside & Cheshire Cancer Network



DOH Return KC65

Measuring Colposcopy clinic performance in the North West

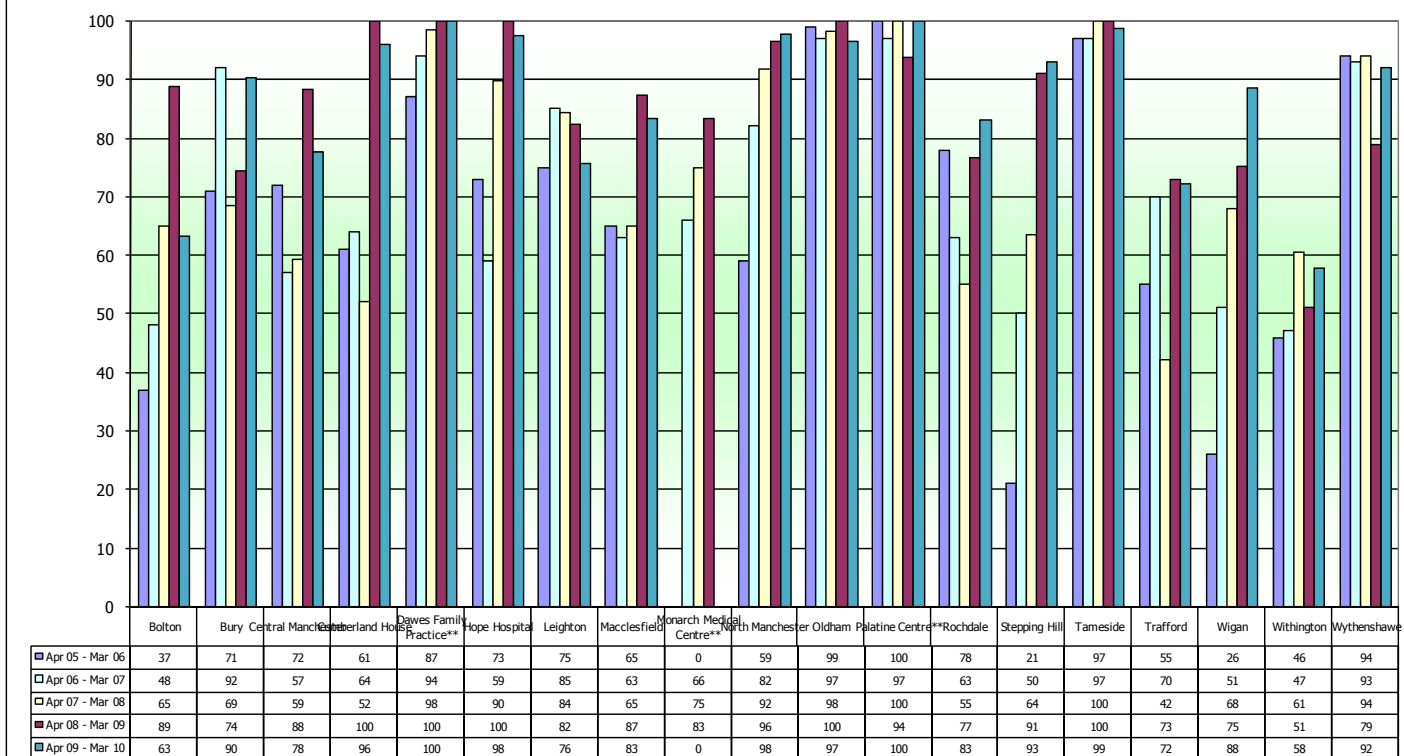
1st April 2009 to 31st March 2010

| | | Percentage of moderate or severe dyskayosis seen within 4 weeks (standard 90%) | | | | |
|-----------------------------------|--------------------------|--|-----------------|-----------------|-----------------|-----------------|
| Colposcopy unit by Cancer Network | | Apr 09 - Mar 10 | Apr 08 - Mar 09 | Apr 07 - Mar 08 | Apr 06 - Mar 07 | Apr 05 - Mar 06 |
| Lancs & S Cumbria | Blackburn | 65 | 76 | 69 | 64 | 47 |
| | Blackpool | 77 | 86 | 69 | 69 | 76 |
| | Burnley | 65 | 64 | 64 | 70 | 75 |
| | Furness | 93 | 97 | 98 | 98 | 92 |
| | Lancaster | 86 | 88 | 81 | 81 | 76 |
| | Sharoe Green | 98 | 93 | 88 | 85 | 87 |
| | Westmorland | 59 | 83 | 74 | 78 | 63 |
| Manchester & Cheshire | Bolton | 63 | 89 | 65 | 48 | 37 |
| | Bury | 90 | 74 | 69 | 92 | 71 |
| | Central Manchester | 78 | 88 | 59 | 57 | 72 |
| | Cumberland House | 96 | 100 | 52 | 64 | 61 |
| | Dawes Family Practice** | 100 | 100 | 98 | 94 | 87 |
| | Hope Hospital | 98 | 100 | 90 | 59 | 73 |
| | Leighton | 76 | 82 | 84 | 85 | 75 |
| | Macclesfield | 83 | 87 | 65 | 63 | 65 |
| | Monarch Medical Centre** | 0 | 83 | 75 | 66 | n/a |
| | North Manchester | 98 | 96 | 92 | 82 | 59 |
| | Oldham | 97 | 100 | 98 | 97 | 99 |
| | Palatine Centre** | 100 | 94 | 100 | 97 | 100 |
| | Rochdale | 83 | 77 | 55 | 63 | 78 |
| | Stepping Hill | 93 | 91 | 64 | 50 | 21 |
| | Tameside | 99 | 100 | 100 | 97 | 97 |
| | Trafford | 72 | 73 | 42 | 70 | 55 |
| Wigan | 88 | 75 | 68 | 51 | 26 | |
| Withington | 58 | 51 | 61 | 47 | 46 | |
| Wythenshawe | 92 | 79 | 94 | 93 | 94 | |
| Merseyside & Cheshire | Aintree | 93 | 93 | 96 | 96 | 95 |
| | Arrowe Park | 97 | 98 | 100 | 98 | 97 |
| | Chester | 98 | 95 | 95 | 77 | 50 |
| | Liverpool | 92 | 97 | 92 | 85 | 100 |
| | LWH | 95 | 96 | 93 | 94 | 99 |
| | Southport & Formby | 97 | 69 | 82 | 75 | 47 |
| | Southport & Ormskirk | 92 | 91 | 88 | 82 | 81 |
| | Warrington | 79 | 88 | 93 | 82 | 66 |
| Northern | Whiston | 94 | 91 | 77 | 66 | 79 |
| | Cumberland Infirmary | 92 | 93 | 66 | 77 | 72 |
| | West Cumberland | | | | | 35 |

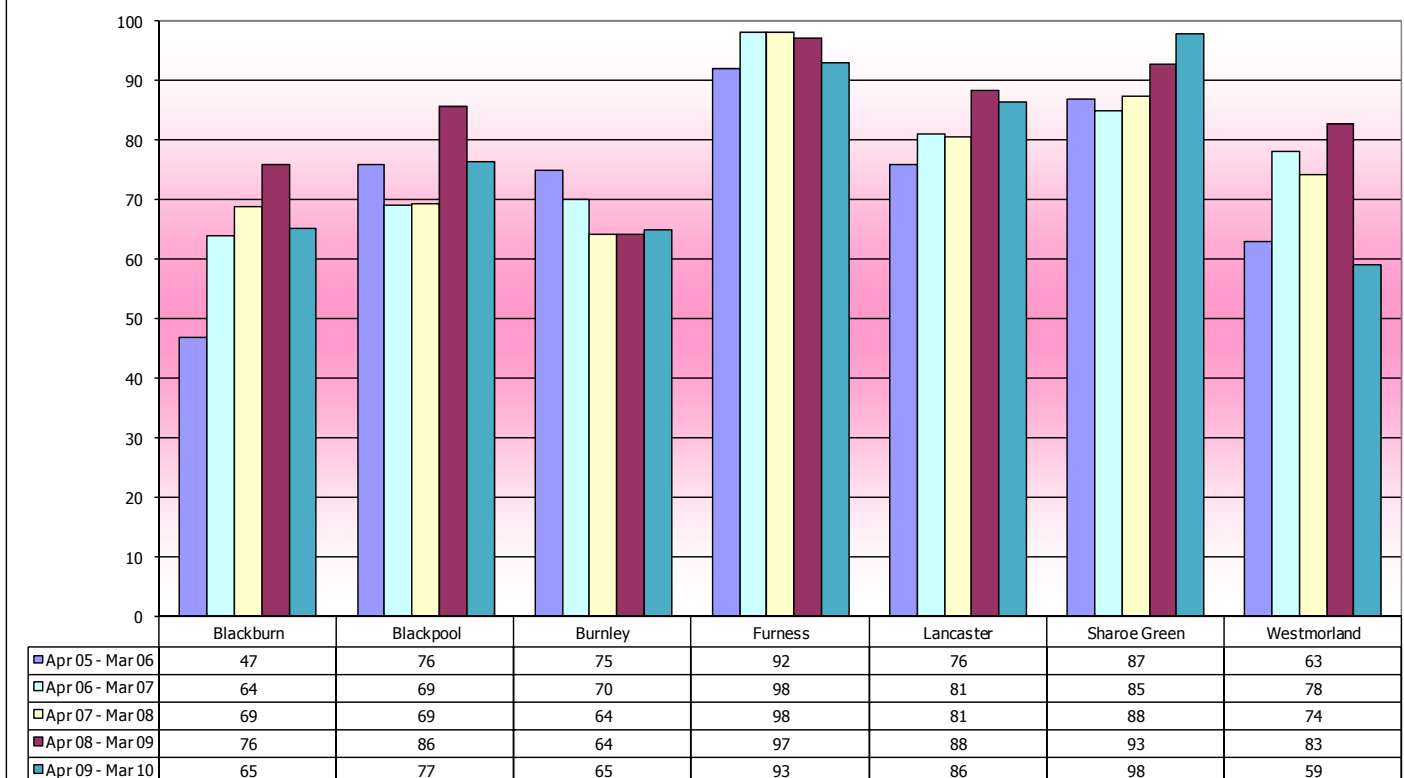
North West Regional
Average
** GP based practices

88 87 79 76 71

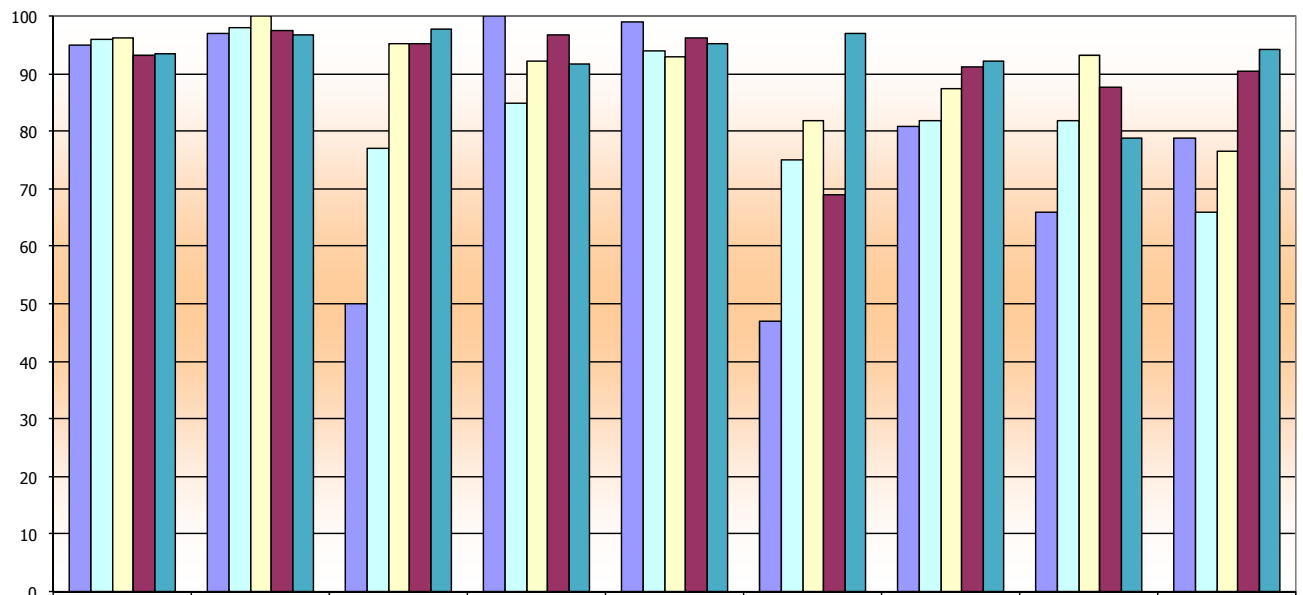
Percentage of moderate/severe referrals seen within 4 weeks (standard 90%) 2005-06 to 2009 Greater Manchester & Cheshire Cancer Network



Percentage of moderate/severe referrals seen within 4 weeks (standard 90%) 2005-06 to 2009-10 Lancashire & South Cumbria Cancer Network



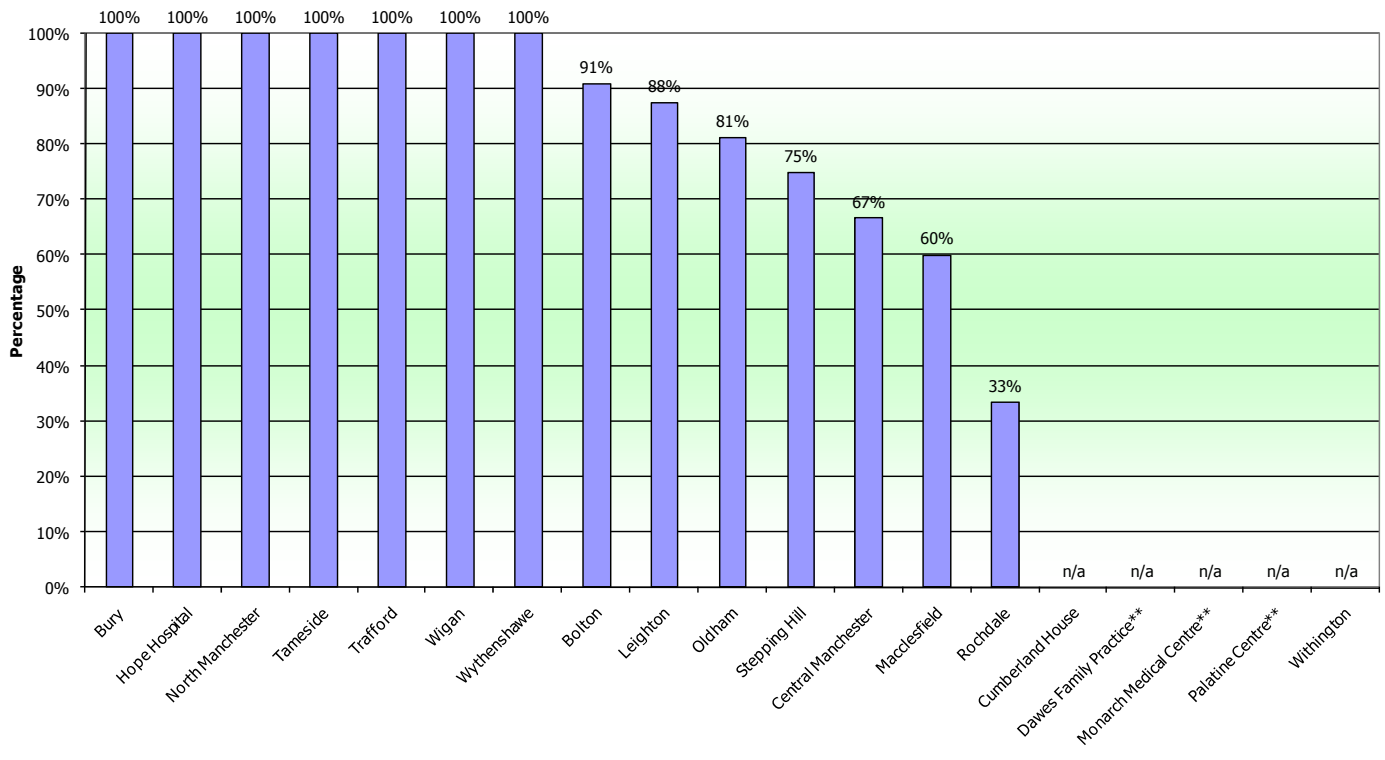
Percentage of moderate/severe referrals seen within 4 weeks (standard 90%) 2005-06 to 2009 -10 Merseyside & Cheshire Cancer Network



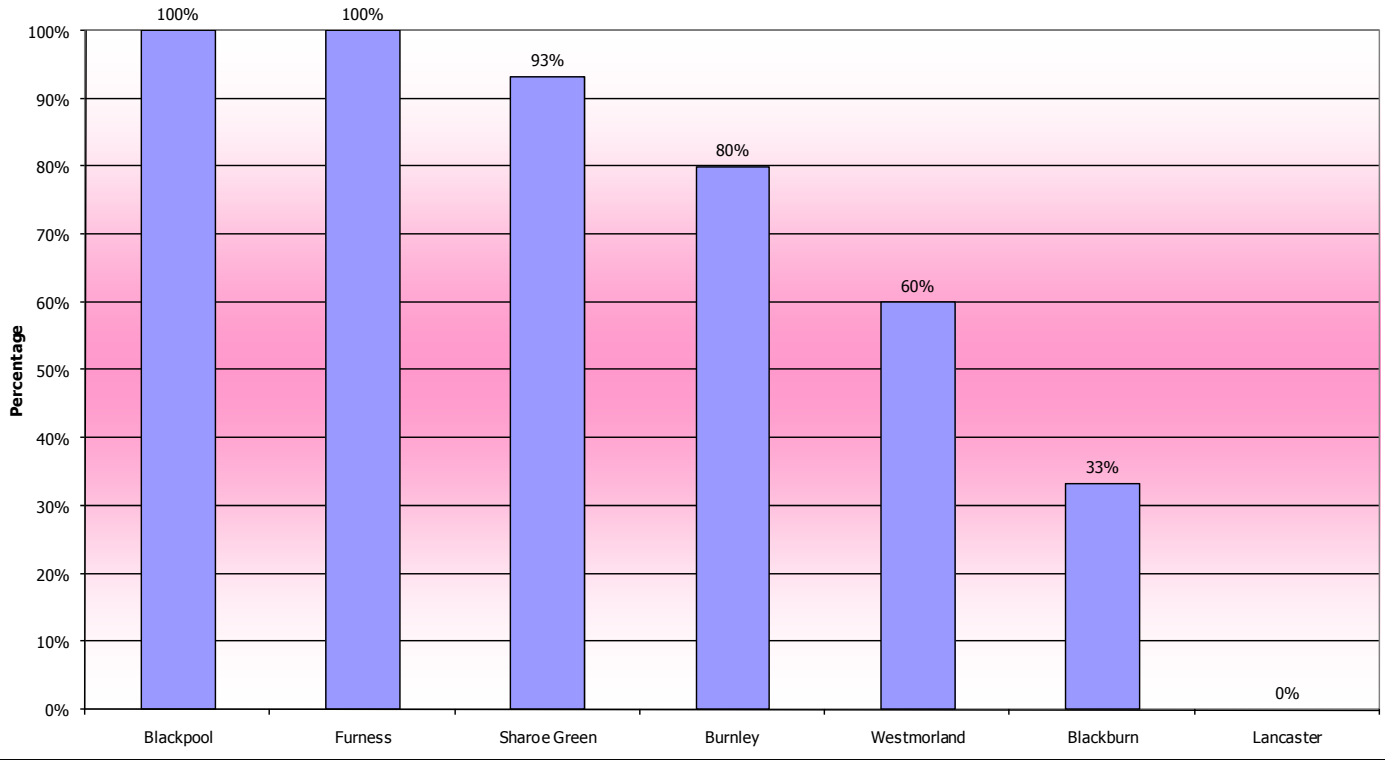
| | Aintree | Arrowe Park | Chester | Liverpool | LWH | Southport & Formby | Southport & Ormskirk | Warrington | Whiston |
|-----------------|---------|-------------|---------|-----------|-----|--------------------|----------------------|------------|---------|
| Apr 05 - Mar 06 | 95 | 97 | 50 | 100 | 99 | 47 | 81 | 66 | 79 |
| Apr 06 - Mar 07 | 96 | 98 | 77 | 85 | 94 | 75 | 82 | 82 | 66 |
| Apr 07 - Mar 08 | 96 | 100 | 95 | 92 | 93 | 82 | 88 | 93 | 77 |
| Apr 08 - Mar 09 | 93 | 98 | 95 | 97 | 96 | 69 | 91 | 88 | 91 |
| Apr 09 - Mar 10 | 93 | 97 | 98 | 92 | 95 | 97 | 92 | 79 | 94 |

| | | within 2 weeks | Total | Percentage seen within 2 weeks (standard 90%) |
|-----------------------------------|--------------------------|--|-------|---|
| Colposcopy unit by Cancer Network | | Severe/? Invasive or Glandular neoplasia | | Apr 09 - Mar 10 |
| Lancs & S Cumbria | Blackpool | 10 | 10 | 100% |
| | Furness | 4 | 4 | 100% |
| | Sharoe Green | 14 | 15 | 93% |
| | Burnley | 4 | 5 | 80% |
| | Westmorland | 3 | 5 | 60% |
| | Blackburn | 2 | 6 | 33% |
| | Lancaster | 0 | 2 | 0% |
| Manchester & Cheshire | Bury | 5 | 5 | 100% |
| | Hope Hospital | 6 | 6 | 100% |
| | North Manchester | 4 | 4 | 100% |
| | Tameside | 13 | 13 | 100% |
| | Trafford | 3 | 3 | 100% |
| | Wigan | 8 | 8 | 100% |
| | Wythenshawe | 3 | 3 | 100% |
| | Bolton | 10 | 11 | 91% |
| | Leighton | 7 | 8 | 88% |
| | Oldham | 13 | 16 | 81% |
| | Stepping Hill | 3 | 4 | 75% |
| | Central Manchester | 4 | 6 | 67% |
| | Macclesfield | 3 | 5 | 60% |
| | Rochdale | 2 | 6 | 33% |
| | Cumberland House | 0 | 0 | n/a |
| | Dawes Family Practice** | 0 | 0 | n/a |
| | Monarch Medical Centre** | 0 | 0 | n/a |
| Palatine Centre** | 0 | 0 | n/a | |
| Withington | 0 | 0 | n/a | |
| Merseyside & Cheshire | LWH | 18 | 19 | 95% |
| | Chester | 16 | 17 | 94% |
| | Arrowe Park | 19 | 22 | 86% |
| | Southport & Formby | 3 | 4 | 75% |
| | Whiston | 5 | 7 | 71% |
| | Aintree | 12 | 17 | 71% |
| | Southport & Ormskirk | 5 | 8 | 63% |
| | Warrington | 10 | 19 | 53% |
| | Liverpool | 0 | 0 | n/a |
| Northern | Cumberland Infirmary | 4 | 6 | 67% |

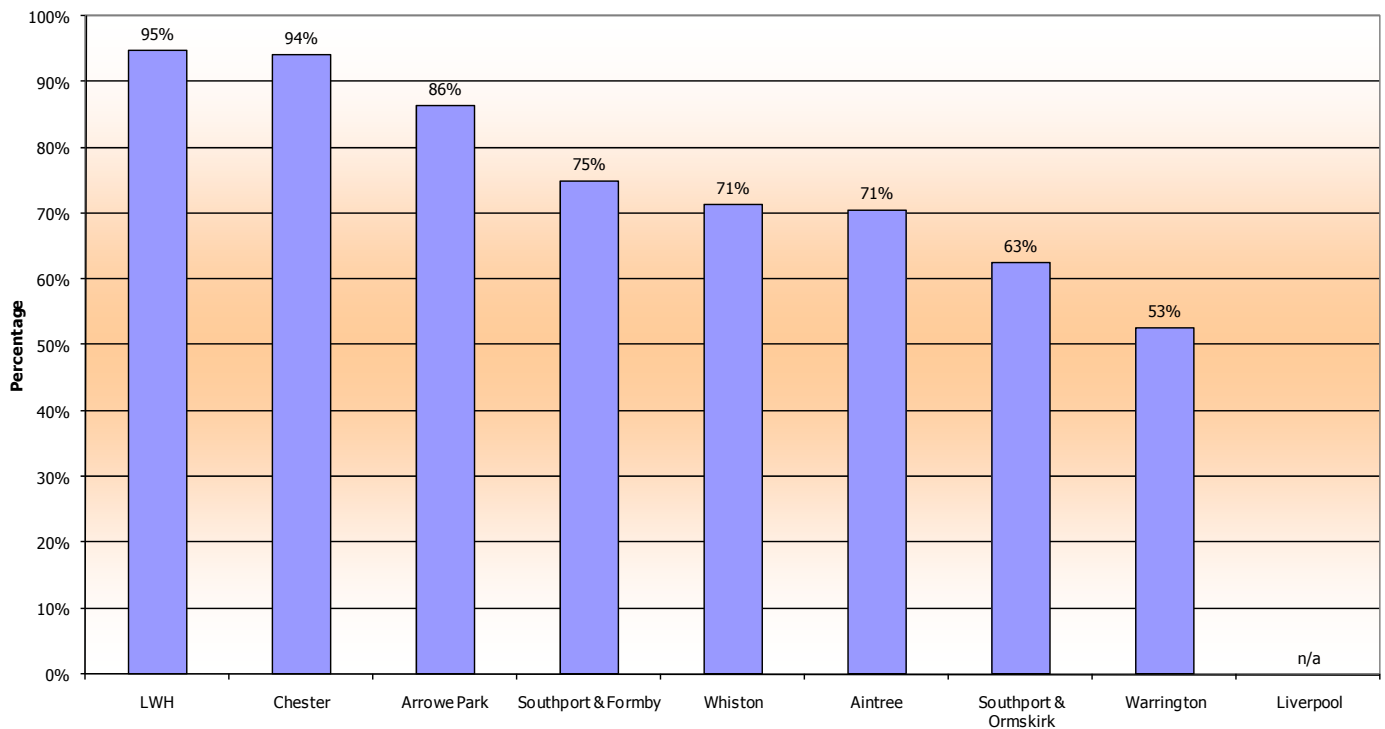
Percentage of all smears reported as possible invasive or glandular neoplasia seen within 2 weeks (standard 90%) for period Apr 09 - Mar 10
Greater Manchester & Cheshire Cancer Network



Percentage of all smears reported as possible invasive or glandular neoplasia seen within 2 weeks (standard 90%) for period Apr 09-Mar 10
Lancashire & South Cumbria Cancer Network



Percentage of all smears reported as possible invasive or glandular neoplasia seen within 2 weeks (standard 90%) for period Apr 09 - Mar 10
Merseyside & Cheshire Cancer Network



DNA %

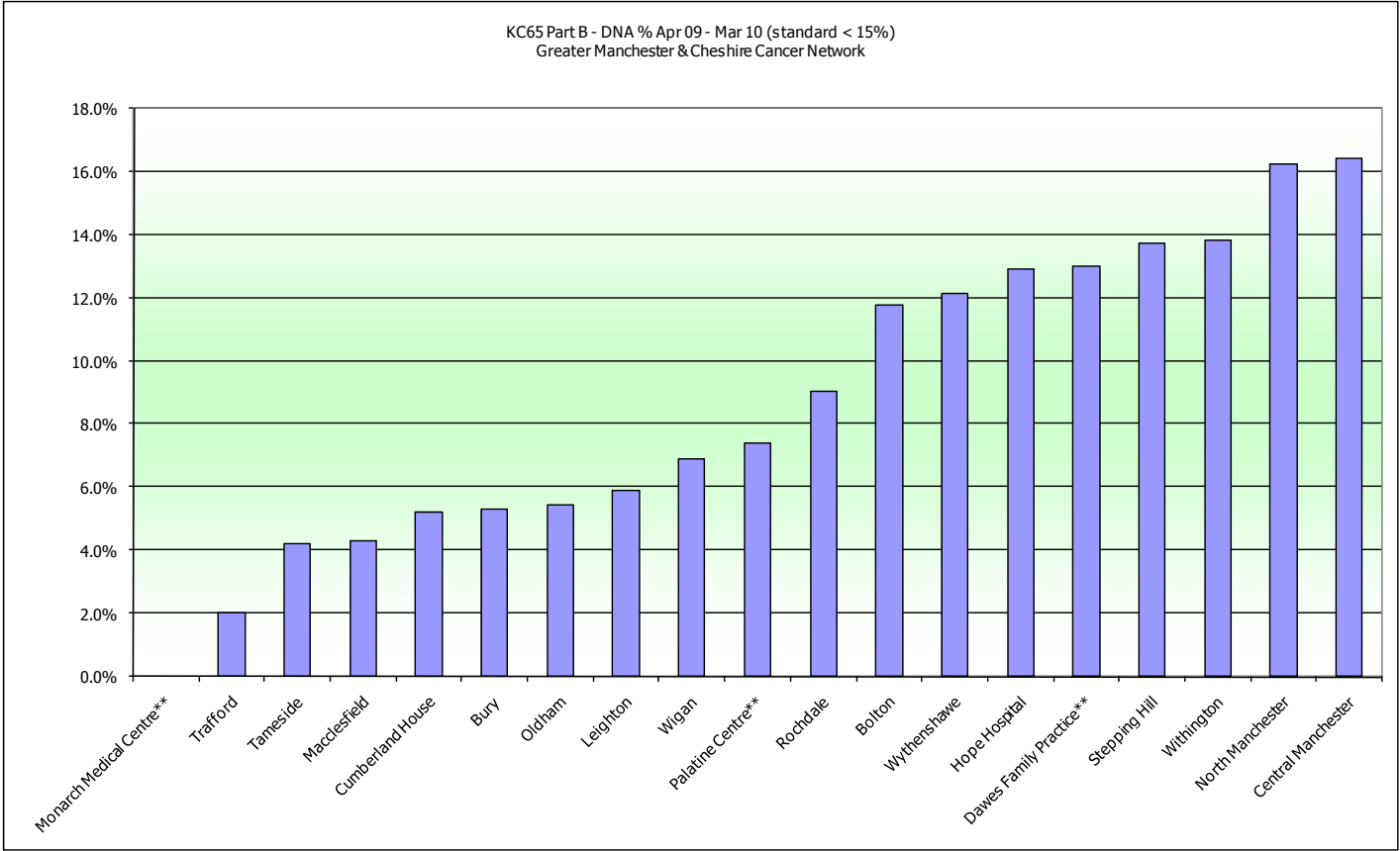
| Colposcopy unit by Cancer Network | | Apr 09 - Mar 10 |
|-----------------------------------|--------------------------|-----------------|
| Lancs & S Cumbria | Westmorland | 5.2% |
| | Furness | 9.7% |
| | Sharoe Green | 11.5% |
| | Burnley | 13.2% |
| | Blackburn | 14.0% |
| | Lancaster | 15.4% |
| | Blackpool | not supplied |
| Manchester & Cheshire | Monarch Medical Centre** | 0.0% |
| | Trafford | 2.0% |
| | Tameside | 4.2% |
| | Macclesfield | 4.3% |
| | Cumberland House | 5.2% |
| | Bury | 5.3% |
| | Oldham | 5.4% |
| | Leighton | 5.9% |
| | Wigan | 6.9% |
| | Palatine Centre** | 7.4% |
| | Rochdale | 9.0% |
| | Bolton | 11.8% |
| | Wythenshawe | 12.1% |
| | Hope Hospital | 12.9% |
| | Dawes Family Practice** | 13.0% |
| | Stepping Hill | 13.7% |
| | Withington | 13.8% |
| North Manchester | 16.2% | |
| Central Manchester | 16.4% | |
| Merseyside & Cheshire | Aintree | 2.5% |
| | Southport & Formby | 2.7% |
| | Warrington | 9.0% |
| | Southport & Ormskirk | 9.3% |
| | LWH | 9.3% |
| | Chester | 9.6% |
| | Arrowe Park | 12.1% |
| | Liverpool | 13.4% |
| | Whiston | 18.1% |
| Northern | Cumberland Infirmary | 13.3% |

NW Average

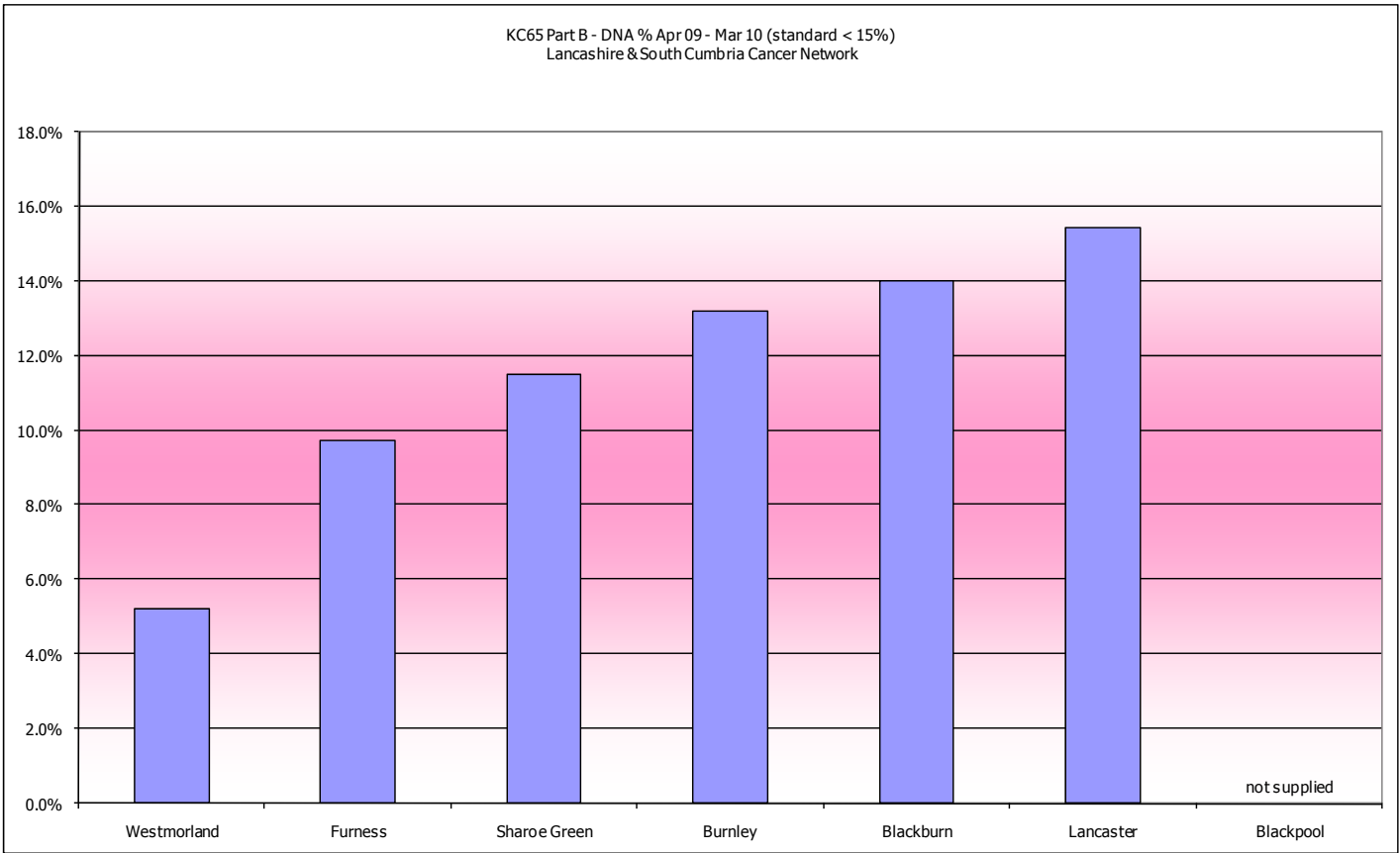
9.7%

** GP based practices

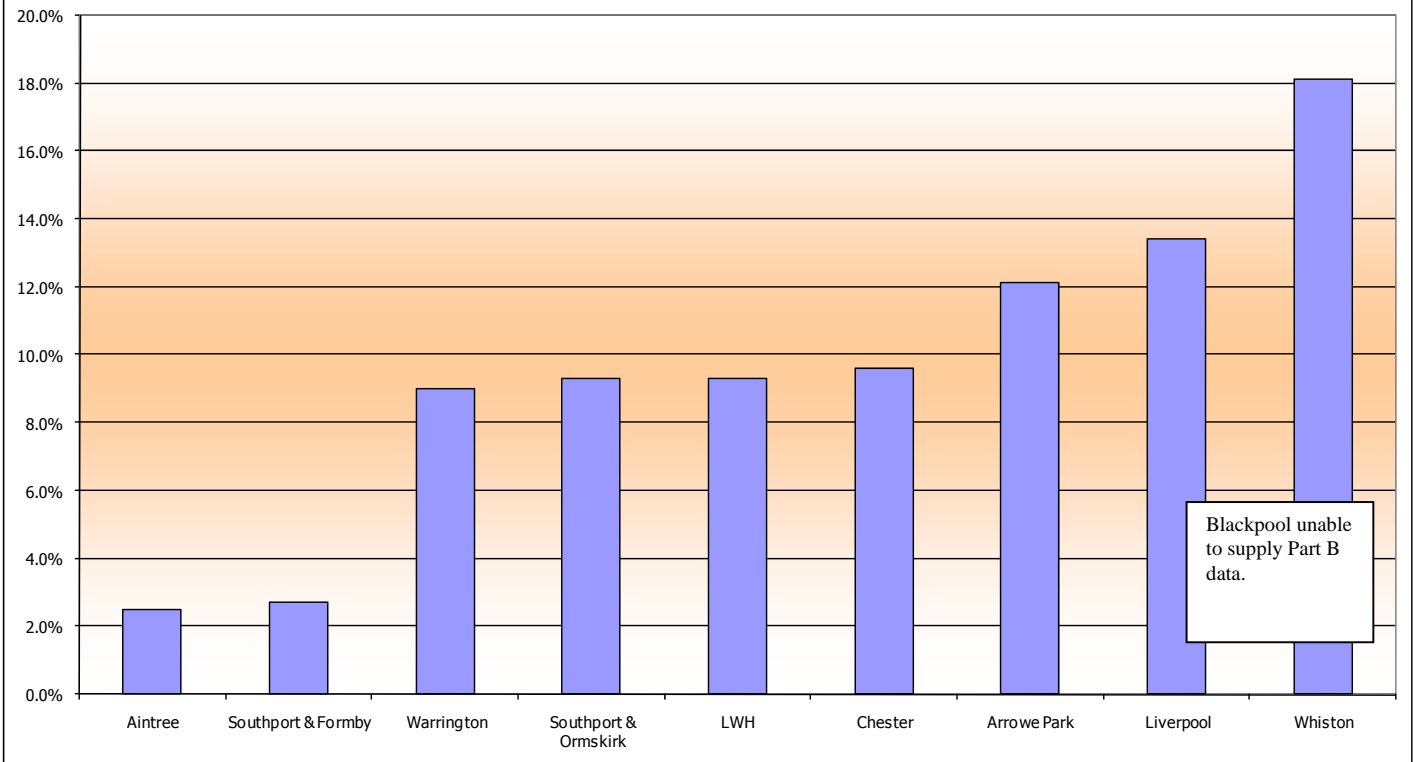
KC65 Part B - DNA % Apr 09 - Mar 10 (standard < 15%)
Greater Manchester & Cheshire Cancer Network



KC65 Part B - DNA % Apr 09 - Mar 10 (standard < 15%)
Lancashire & South Cumbria Cancer Network



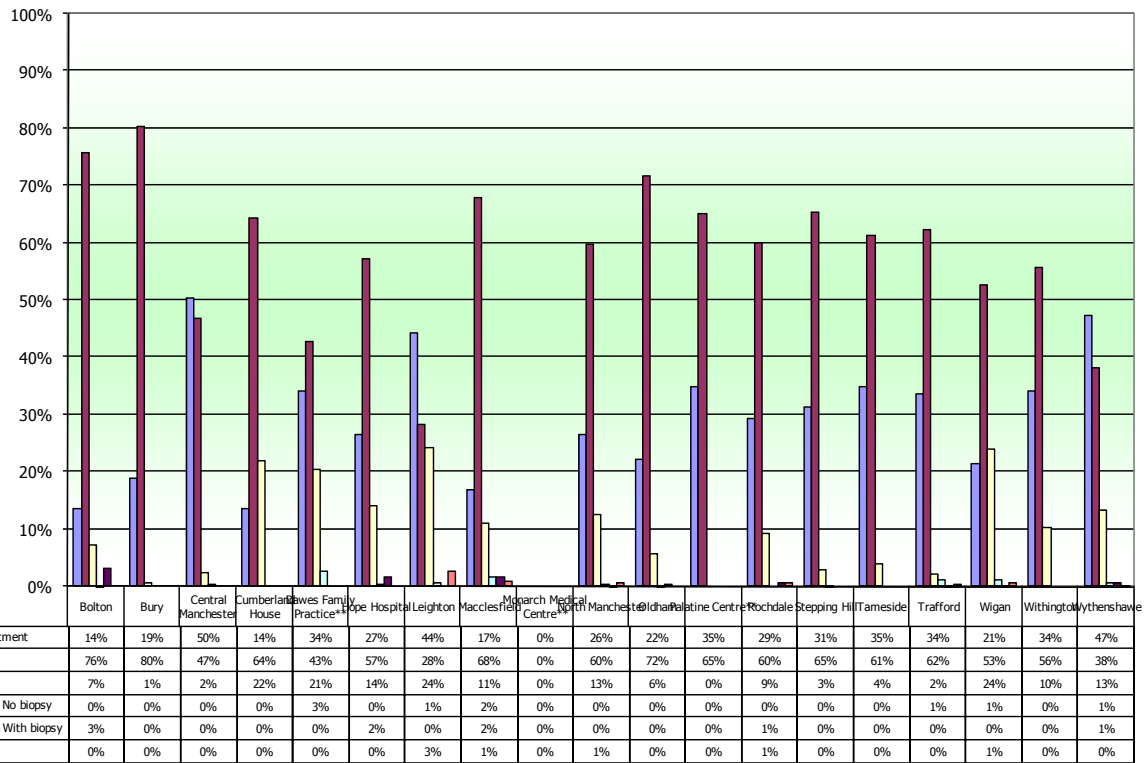
KC65 Part B - DNA % Apr 09 - Mar 10 (standard < 15%)
Merseyside & Cheshire Cancer Network



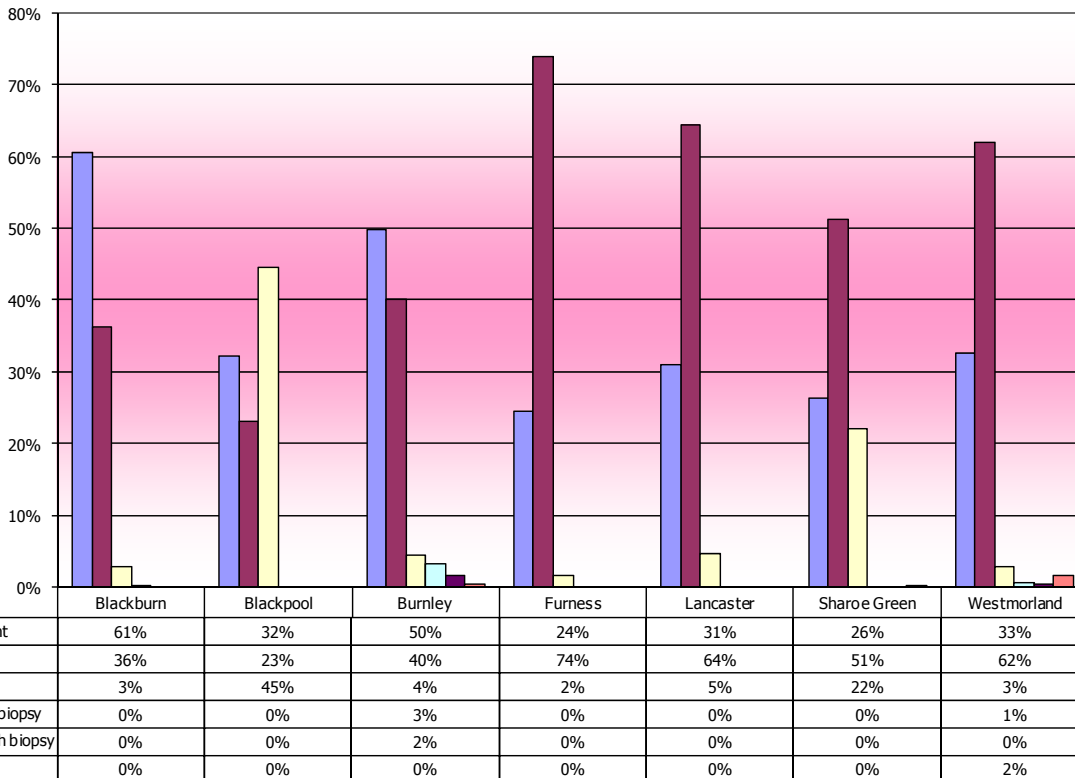
KC65 Part C1 First Attendance – type of procedure

| Colposcopy unit by Cancer Network | | No Treatment | Diag | Excision | Ablation No biopsy | Ablation With biopsy | Other |
|-----------------------------------|--------------------------|--------------|------|----------|--------------------|----------------------|-------|
| Lancs & S Cumbria | Blackburn | 61% | 36% | 3% | 0% | 0% | 0% |
| | Blackpool | 32% | 23% | 45% | 0% | 0% | 0% |
| | Burnley | 50% | 40% | 4% | 3% | 2% | 0% |
| | Furness | 24% | 74% | 2% | 0% | 0% | 0% |
| | Lancaster | 31% | 64% | 5% | 0% | 0% | 0% |
| | Sharoe Green | 26% | 51% | 22% | 0% | 0% | 0% |
| | Westmorland | 33% | 62% | 3% | 1% | 0% | 2% |
| Manchester & Cheshire | Bolton | 14% | 76% | 7% | 0% | 3% | 0% |
| | Bury | 19% | 80% | 1% | 0% | 0% | 0% |
| | Central Manchester | 50% | 47% | 2% | 0% | 0% | 0% |
| | Cumberland House | 14% | 64% | 22% | 0% | 0% | 0% |
| | Dawes Family Practice** | 34% | 43% | 21% | 3% | 0% | 0% |
| | Hope Hospital | 27% | 57% | 14% | 0% | 2% | 0% |
| | Leighton | 44% | 28% | 24% | 1% | 0% | 3% |
| | Macclesfield | 17% | 68% | 11% | 2% | 2% | 1% |
| | Monarch Medical Centre** | 0% | 0% | 0% | 0% | 0% | 0% |
| | North Manchester | 26% | 60% | 13% | 0% | 0% | 1% |
| | Oldham | 22% | 72% | 6% | 0% | 0% | 0% |
| | Palatine Centre** | 35% | 65% | 0% | 0% | 0% | 0% |
| | Rochdale | 29% | 60% | 9% | 0% | 1% | 1% |
| | Stepping Hill | 31% | 65% | 3% | 0% | 0% | 0% |
| | Tameside | 35% | 61% | 4% | 0% | 0% | 0% |
| | Trafford | 34% | 62% | 2% | 1% | 0% | 0% |
| | Wigan | 21% | 53% | 24% | 1% | 0% | 1% |
| Withington | 34% | 56% | 10% | 0% | 0% | 0% | |
| Wythenshawe | 47% | 38% | 13% | 1% | 1% | 0% | |
| Merseyside & Cheshire | Aintree | 63% | 16% | 15% | 5% | 0% | 1% |
| | Arrowe Park | 42% | 42% | 14% | 0% | 0% | 1% |
| | Chester | 42% | 38% | 20% | 0% | 0% | 0% |
| | Liverpool | 44% | 50% | 5% | 1% | 0% | 0% |
| | LWH | 61% | 20% | 14% | 0% | 0% | 4% |
| | Southport & Formby | 31% | 69% | 0% | 0% | 0% | 0% |
| | Southport & Ormskirk | 31% | 66% | 1% | 1% | 0% | 0% |
| | Warrington | 55% | 36% | 8% | 1% | 0% | 0% |
| | Whiston | 30% | 60% | 8% | 0% | 0% | 2% |
| Northern | Cumberland Infirmary | 21% | 56% | 23% | 1% | 0% | 0% |

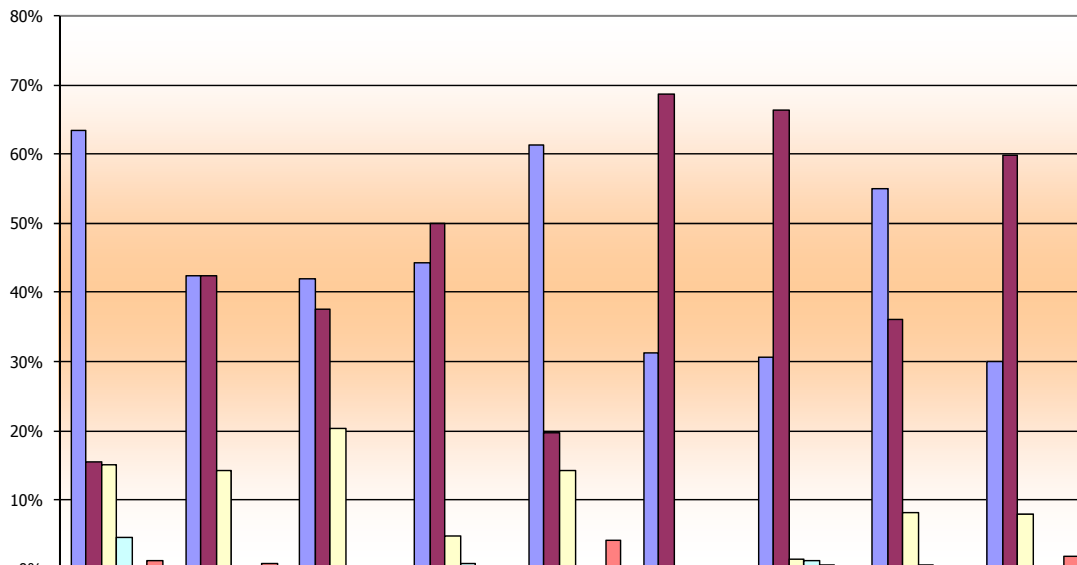
**KC65 Part C1 - First attendance - Type of procedure (%) 2009-2010
Greater Manchester & Cheshire Cancer Network**



**KC65 Part C1 - First attendance - Type of procedure (%) 2009-2010
Lancashire & South Cumbria Cancer Network**



KC65 Part C1 - First attendance - Type of procedure (%) 2009-2010
Merseyside & Cheshire Cancer Network

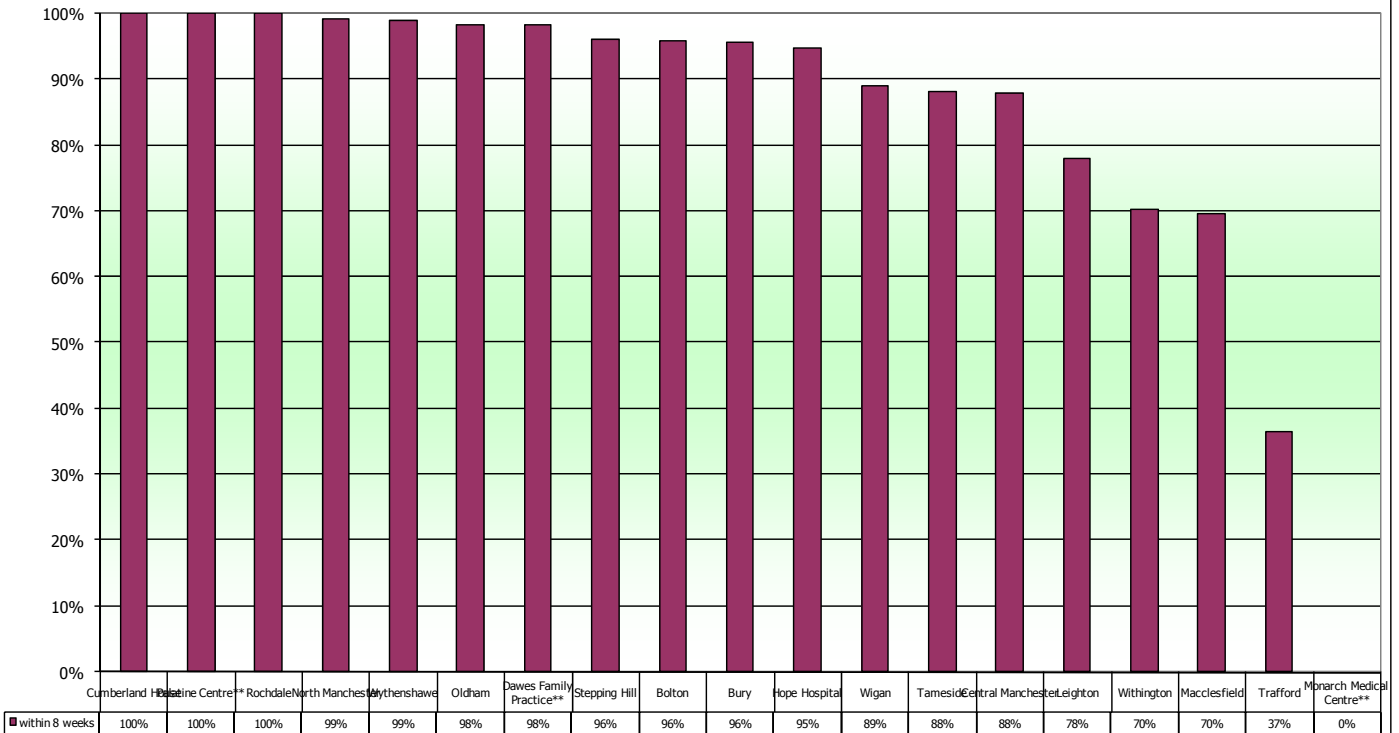


| | Aintree | Arrowe Park | Chester | Liverpool | LWH | Southport & Formby | Southport & Ormskirk | Warrington | Whiston |
|----------------------|---------|-------------|---------|-----------|-----|--------------------|----------------------|------------|---------|
| No Treatment | 63% | 42% | 42% | 44% | 61% | 31% | 31% | 55% | 30% |
| Diag | 16% | 42% | 38% | 50% | 20% | 69% | 66% | 36% | 60% |
| Excision | 15% | 14% | 20% | 5% | 14% | 0% | 1% | 8% | 8% |
| Ablation No biopsy | 5% | 0% | 0% | 1% | 0% | 0% | 1% | 1% | 0% |
| Ablation With biopsy | 0% | 0% | 0% | 0% | 0% | 0% | 0% | 0% | 0% |
| Other | 1% | 1% | 0% | 0% | 4% | 0% | 0% | 0% | 2% |

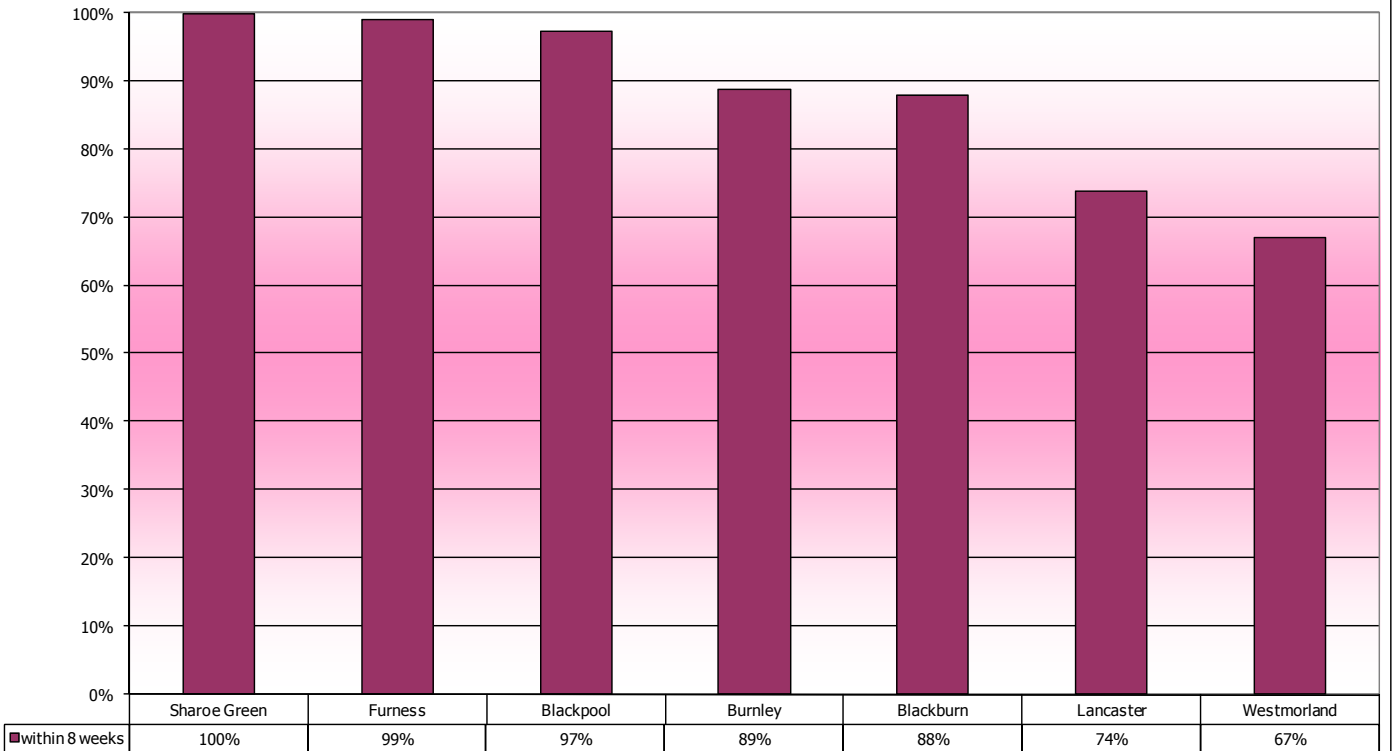
KC65 Part D Time from biopsy to informing patient (1st month of each quarter). Standard 100% within 8 weeks.

| Colposcopy unit by Cancer Network | | within 8 weeks |
|-----------------------------------|-------------------------|----------------------|
| Lancs & S Cumbria | Sharoe Green | 100% |
| | Furness | 99% |
| | Blackpool | 97% |
| | Burnley | 89% |
| | Blackburn | 88% |
| | Lancaster | 74% |
| | Westmorland | 67% |
| Manchester & Cheshire | Cumberland House | 100% |
| | Palatine Centre** | 100% |
| | Rochdale | 100% |
| | North Manchester | 99% |
| | Wythenshawe | 99% |
| | Oldham | 98% |
| | Dawes Family Practice** | 98% |
| | Stepping Hill | 96% |
| | Bolton | 96% |
| | Bury | 96% |
| | Hope Hospital | 95% |
| | Wigan | 89% |
| | Tameside | 88% |
| | Central Manchester | 88% |
| | Leighton | 78% |
| | Withington | 70% |
| | Macclesfield | 70% |
| Trafford | 37% | |
| Monarch Medical Centre** | 0% | |
| Merseyside & Cheshire | Aintree | 100% |
| | Chester | 100% |
| | Southport & Ormskirk | 100% |
| | Southport & Formby | 98% |
| | Liverpool | 97% |
| | LWH | 95% |
| | Arrowe Park | 95% |
| | Warrington | 95% |
| | Whiston | 88% |
| | Northern | Cumberland Infirmary |

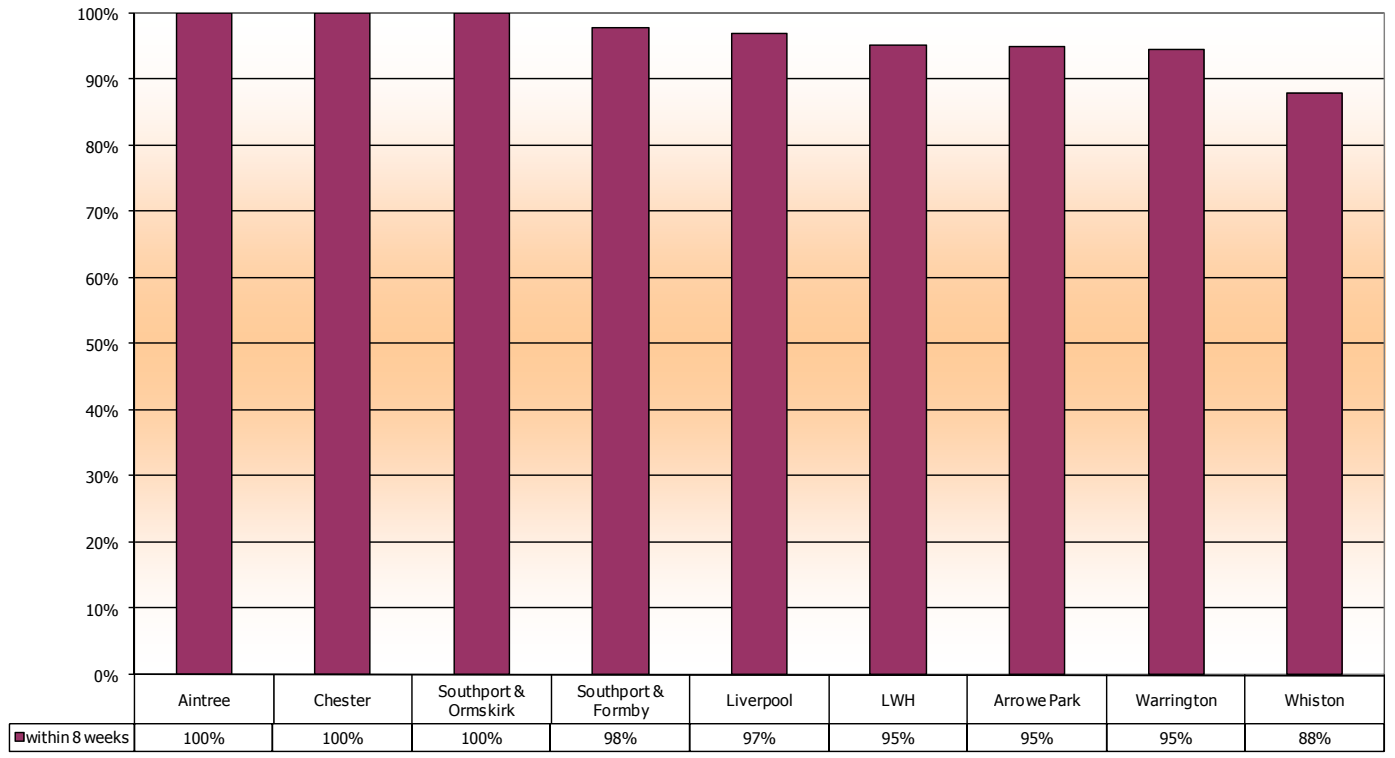
**KC65 Part D - Time from biopsy to informing patient (1st month of each quarter) Standard 100% within 8 weeks
Greater Manchester & Cheshire Cancer Network**



**KC65 Part D - Time from biopsy to informing patient (1st month of each quarter) Standard 100% within 8 weeks
Lancashire & South Cumbria Cancer Network**



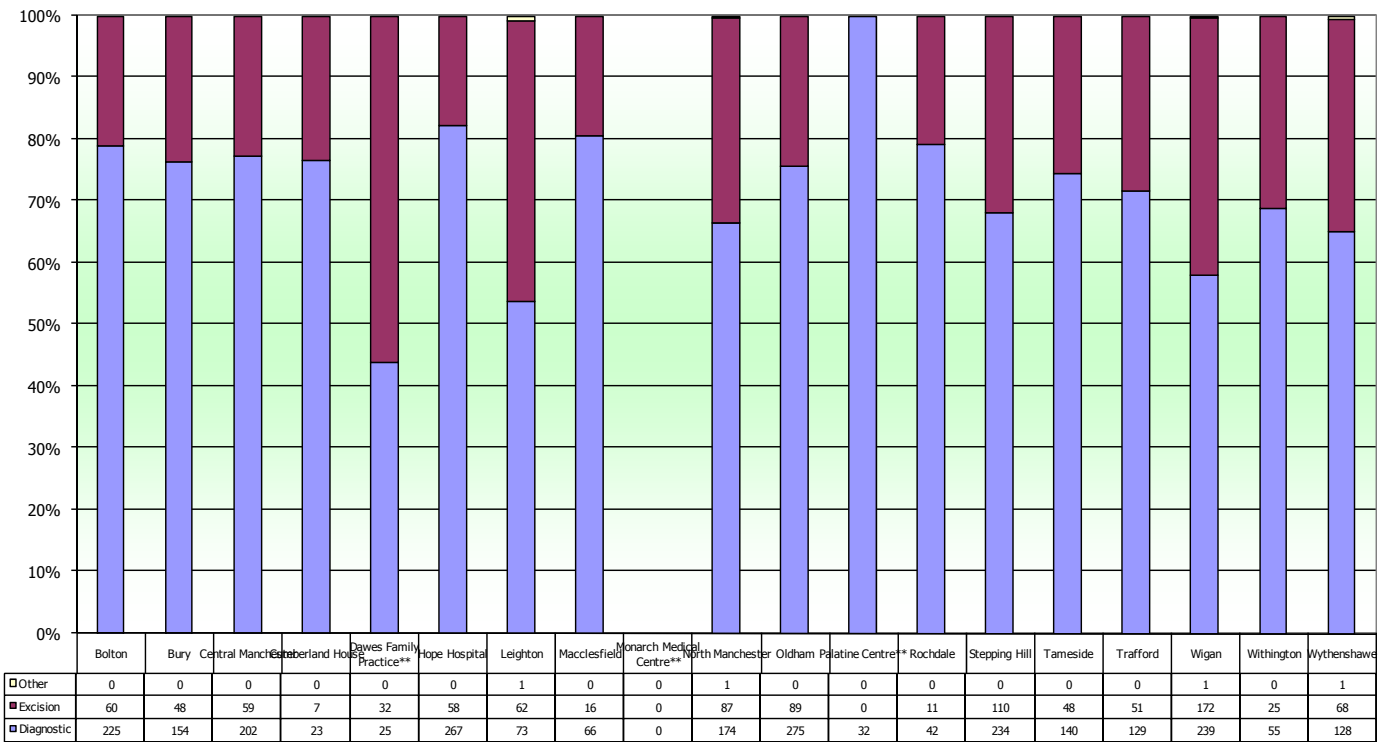
**KC65 Part D - Time from biopsy to informing patient (1st month of each quarter) Standard 100% within 8 weeks
Merseyside & Cheshire Cancer Network**



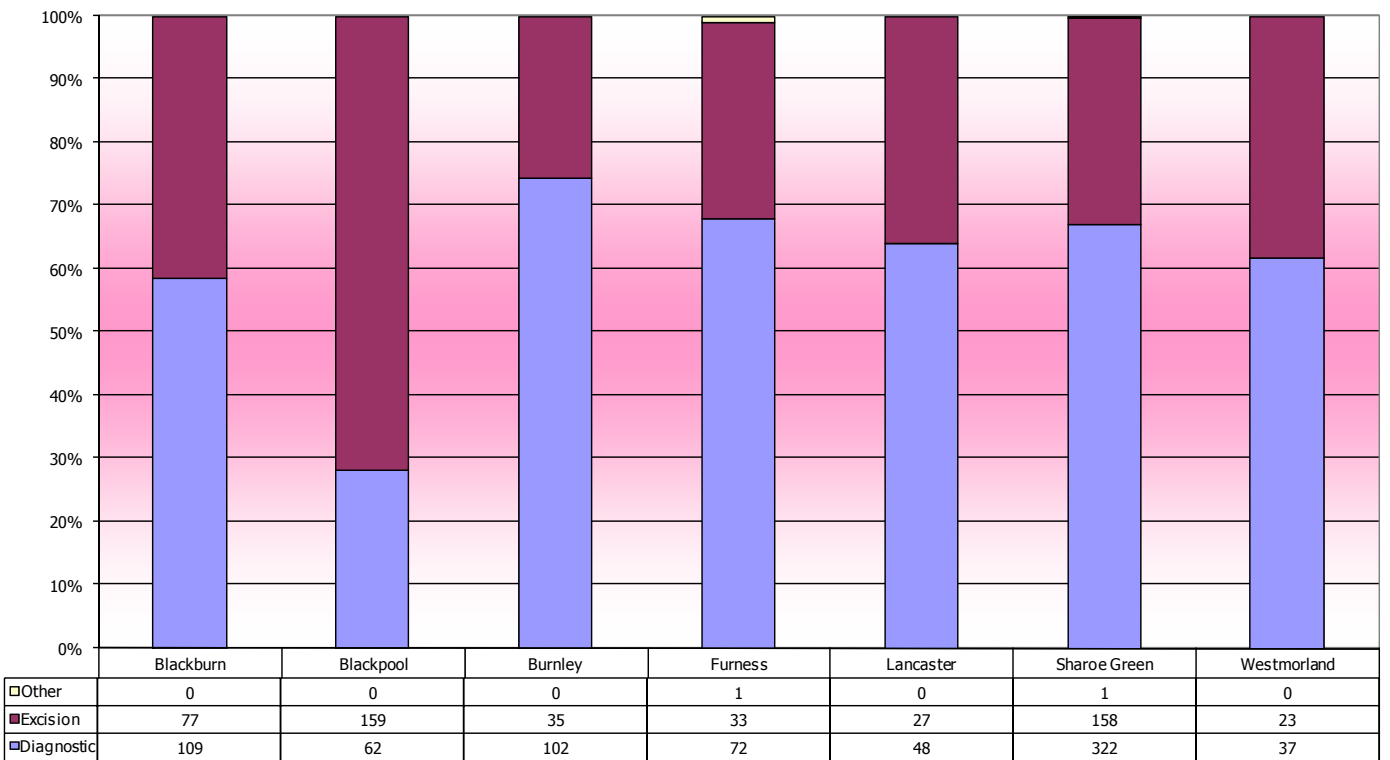
KC65 Part E All outcomes by biopsy time 1st month of each quarter

| Colposcopy unit by Cancer Network | | Diagnostic | Excision | Other |
|-----------------------------------|--------------------------|------------|----------|-------|
| Lancs & S Cumbria | Blackburn | 109 | 77 | 0 |
| | Blackpool | 62 | 159 | 0 |
| | Burnley | 102 | 35 | 0 |
| | Furness | 72 | 33 | 1 |
| | Lancaster | 48 | 27 | 0 |
| | Sharoe Green | 322 | 158 | 1 |
| | Westmorland | 37 | 23 | 0 |
| Manchester & Cheshire | Bolton | 225 | 60 | 0 |
| | Bury | 154 | 48 | 0 |
| | Central Manchester | 202 | 59 | 0 |
| | Cumberland House | 23 | 7 | 0 |
| | Dawes Family Practice** | 25 | 32 | 0 |
| | Hope Hospital | 267 | 58 | 0 |
| | Leighton | 73 | 62 | 1 |
| | Macclesfield | 66 | 16 | 0 |
| | Monarch Medical Centre** | 0 | 0 | 0 |
| | North Manchester | 174 | 87 | 1 |
| | Oldham | 275 | 89 | 0 |
| | Palatine Centre** | 32 | 0 | 0 |
| | Rochdale | 42 | 11 | 0 |
| | Stepping Hill | 234 | 110 | 0 |
| | Tameside | 140 | 48 | 0 |
| | Trafford | 129 | 51 | 0 |
| | Wigan | 239 | 172 | 1 |
| Withington | 55 | 25 | 0 | |
| Wythenshawe | 128 | 68 | 1 | |
| Merseyside & Cheshire | Aintree | 105 | 109 | 12 |
| | Arrowe Park | 266 | 129 | 0 |
| | Chester | 138 | 111 | 0 |
| | Liverpool | 48 | 55 | 0 |
| | LWH | 248 | 234 | 38 |
| | Southport & Formby | 107 | 26 | 0 |
| | Southport & Ormskirk | 105 | 34 | 1 |
| | Warrington | 274 | 95 | 0 |
| | Whiston | 220 | 47 | 9 |
| Northern | Cumberland Infirmary | 215 | 85 | 4 |

**KC65 Part E All outcomes by biopsy type 1st month of each quarter
Greater Manchester & Cheshire Cancer Network**



**KC65 Part E All outcomes by biopsy type 1st month of each quarter
Lancashire & South Cumbria Cancer Network**



**KC65 Part E All outcomes by biopsy type 1st month of each quarter
Merseyside & Cheshire Cancer Network**

